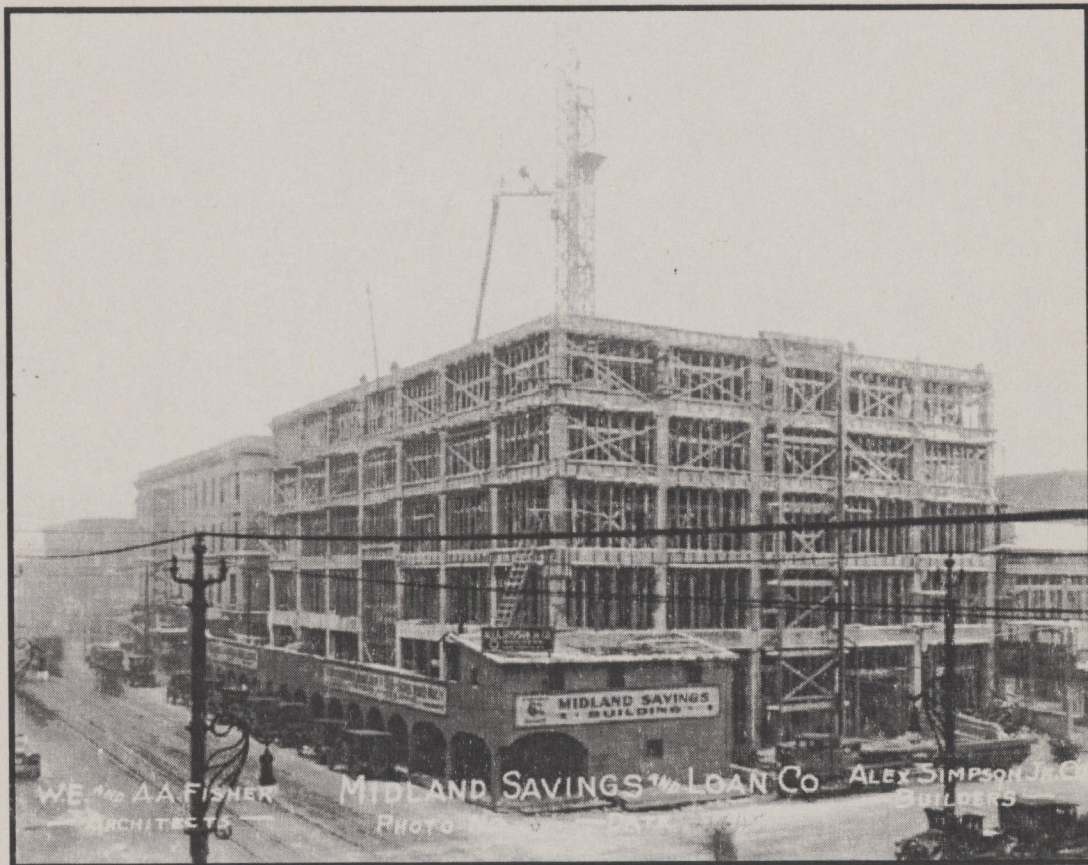


HED 6/50.8/AR2/2003  
c.2

1625

# A Guide to Colorado's Historic Architecture and Engineering



Office of Archaeology and Historic Preservation  
Colorado Historical Society

Second Edition

COLORADO STATE PUBLICATIONS LIBRARY  
HED6/50.8/AR2/2003 c.2 local  
A guide to Colorado's historic architect



3 1799 00031 8410

# Contents

Materials	Art Deco	49
Hispano Adobe	International Style	50
Linear Plan House		52
California Bungalow		54
<b>A Guide to Colorado's Historic Architecture and Engineering</b>		
<b>Second Edition March 2003</b>		
Shingle	House with Commercial Addition	76
Classical Revival		78
Renaissance Revival		79
Colonial Revival	Barns and Agricultural Structures	82
Dutch Colonial Revival	Bank Barn	83
Pueblo Revival	Round-Roof Barn	86
Mission	Bridges	88
Spanish Colonial Revival	Timber-Stranger	89
Mediterranean	Suggested Readings	89
Exotic Revival		
Prairie		
Craftsman		
Tudor Revival		
Jacobean / Elizabethan		
English-Norman Cottage		
Collegiate Gothic		

Revised and expanded with contributions by  
Thaddeus Gearhart, Chris Geddes, Lyle Hansen,  
Dale Heckendorn and Holly Wilson

Originally published in 1983 as **A Guide to Colorado Architecture**,  
written and edited by Sarah J. Pearce with contributions by Merrill A. Wilson



The activity that is the subject of this material has been financed in part with Federal funds from the National Historic Preservation Act, administered by the National Park Service, U.S. Department of the Interior and for the Colorado Historical Society. However, the contents and opinions do not necessarily reflect the views or policies of the U.S. Department of the Interior or the Society, nor does the mention of trade names or commercial products constitute an endorsement or recommendations by the Department of the Interior or the Society.

This program receives Federal funds from the National Park Service; Regulations of the U.S. Department of the Interior strictly prohibit unlawful discrimination in departmental Federally-assisted programs on the basis of race, color, national origin, age or handicap. Any person who believes he or she has been discriminated against in any program, activity, or facility operated by a recipient of Federal assistance should write to: Director, Equal Opportunity Program. U.S. Department of the Interior, National Park Service, 1849 C Street, Washington, D.C. 20240.

This publication was also funded in part by a grant from the State Historical Fund of the Colorado Historical Society.

# Contents

## Materials

Hispano Adobe	
Linear Plan House.....	2
Center Passage House .....	3
Pioneer Log .....	4
Sod Construction .....	5

## Styles

Greek Revival .....	8
Gothic Revival.....	10
Carpenter Gothic.....	11
Second Empire .....	12
Châteauesque .....	13
Italianate .....	14
Romanesque Revival /	
Richardsonian Romanesque .....	16
Queen Anne.....	18
Victorian Eclectic.....	20
Edwardian.....	21
Shingle.....	22
Classical Revival.....	23
Renaissance Revival.....	26
Colonial Revival .....	28
Dutch Colonial Revival .....	30
Pueblo Revival.....	31
Mission.....	32
Spanish Colonial Revival .....	34
Mediterranean.....	36
Exotic Revivals.....	38
Prairie .....	39
Craftsman .....	40
Tudor Revival.....	42
Jacobean / Elizabethan.....	44
English-Norman Cottage.....	46
Collegiate Gothic.....	48

Art Deco .....	49
International Style .....	50
Rustic.....	52
Novelty .....	54

## Forms

Terrace .....	58
Foursquare.....	60
Classic Cottage.....	62
Bungalow .....	64
A-Frame .....	66
Basement House.....	68
Split-Level .....	69
Early High Rise .....	70

## Special Use Types

Commercial	
Nineteenth Century.....	72
Early Twentieth Century .....	74
House with Commercial Addition.....	76
Gas Stations	
House with Canopy .....	78
Cottage.....	79
Barns and Agricultural Structures	
Bank Barn .....	82
Round-Roof Barn .....	83
Bridges	
Timber Stringer.....	86
Suggested Readings.....	89

Dale Heckendorn  
Office of Archaeology  
and Historic Preservation  
2003

# Contents

<p>Art Deco ..... 49</p> <p>International Style ..... 50</p> <p>Rustic ..... 52</p> <p>Novelty ..... 54</p> <p>Center-Passage House ..... 56</p> <p>Classic Cottage ..... 62</p> <p>Rustic House ..... 64</p> <p>Special Use Types ..... 68</p> <p>Commercial ..... 68</p> <p>Nineteenth Century ..... 72</p> <p>Early Twentieth Century ..... 74</p> <p>House with Commercial Addition ..... 76</p> <p>Gas Stations ..... 78</p> <p>House with Canopy ..... 78</p> <p>Cottage ..... 79</p> <p>Barns and Agricultural Structures ..... 82</p> <p>Bank Barn ..... 82</p> <p>Round-Roof Barn ..... 83</p> <p>Bridges ..... 86</p> <p>Timber Stinger ..... 86</p> <p>Suggested Readings ..... 88</p>	<p>Materials ..... 88</p> <p>Hipano Adobe ..... 88</p> <p>Linear Plan House ..... 88</p> <p>Center-Passage House ..... 88</p> <p>Novelty ..... 88</p> <p>Classic Cottage ..... 88</p> <p>Rustic House ..... 88</p> <p>Special Use Types ..... 88</p> <p>Commercial ..... 88</p> <p>Nineteenth Century ..... 88</p> <p>Early Twentieth Century ..... 88</p> <p>House with Commercial Addition ..... 88</p> <p>Gas Stations ..... 88</p> <p>House with Canopy ..... 88</p> <p>Cottage ..... 88</p> <p>Barns and Agricultural Structures ..... 88</p> <p>Bank Barn ..... 88</p> <p>Round-Roof Barn ..... 88</p> <p>Bridges ..... 88</p> <p>Timber Stinger ..... 88</p> <p>Suggested Readings ..... 88</p>
---	--

## Preface to the First Edition

The Office of Archaeology and Historic Preservation of the Colorado Historical Society initiated a project to develop an architectural guide for Colorado in March 1983 with the assistance of a grant from the Colorado Commission on Higher Education. The purpose of the guide is to standardize the terminology used in describing Colorado architectural styles to assist surveyors in recording properties for the Colorado Inventory of Cultural Resources. The terminology will provide consistency for encoding and retrieving architectural information from the computerized data system. This document is not intended to be a history of architecture in Colorado, but simply a guide to common architectural styles and types.

We wish to acknowledge the contributions of the people who assisted the project by reviewing and commenting on the typology. Special thanks to deTeel Patterson Tiller of the National Park Service, Gracy Gary of the National Trust for Historic Preservation, Vicki Rottman of the Colorado State Highway Department, Don Etter of Holland and Hart, and Barbara Norgren.

Sarah J. Pearce  
1983

## Preface to the Second Edition

This second edition is primarily a reprint of the first. Some changes to the text were made in the interests of clarity resulting from twenty year's use of the original guide. Some new architectural and engineering styles and types were added to reflect recent survey and registration work. A few styles and types were removed as they no longer constitute current classification practices. However, this publication should not be considered as fully representative of the current thinking on Colorado architecture and engineering. It is designed primarily to return to print a guide unavailable for nearly a decade. It will serve as the beginning point for a third edition which will better present a modern perspective on Colorado architecture and engineering encompassing the past twenty years of cultural resource survey.

New styles, forms and types will be added regularly to the online *Guide to Colorado's Historic Architecture and Engineering*. The guide may be accessed on the Office of Archaeology and Historic Preservation Web site at [www.coloradohistory-oahp.org](http://www.coloradohistory-oahp.org).

We wish to acknowledge the field work and analytical research of numerous cultural resource professionals whose reports formed the basis for many of the additions to this publication. These individuals include Clayton Fraser, Laurie and Thomas Simmons, Carl McWilliams, and Maria Mondragon-Valdez.

Dale Heckendorn  
Office of Archaeology  
and Historic Preservation  
2003

## Preface to the First Edition

The Office of Archaeology and Historic Preservation of the Colorado Historical Society initiated a project to develop an architectural guide for Colorado in March 1983 with the assistance of a grant from the Colorado Commission on Higher Education. The purpose of the guide is to standardize the terminology used in describing Colorado architectural styles to assist surveyors in recording properties for the Colorado Inventory of Cultural Resources. The terminology will provide consistency for encoding and retrieving architectural information from the computerized data system. This document is not intended to be a history of architecture in Colorado, but simply a guide to common architectural styles and types.

We wish to acknowledge the contributions of the people who assisted the project by reviewing and commenting on the typology. Special thanks to Daniel Peterson, Chief of the National Park Service, Tracy Gary of the National Trust for Historic Preservation, Vicki Robman of the Colorado State Highway Department, Don Etter of Holland and Hart, and Barbara Morgan.

Sarah J. Pearce

1983

## Preface to the Second Edition

This second edition is primarily a reprint of the first. Some changes to the text were made in the interests of clarity resulting from twenty years' use of the original guide. Some new architectural and engineering styles and types were added to reflect recent survey and registration work. A few styles and types were removed as they no longer constitute current classification practices. However, this publication should not be considered as fully representative of the current thinking on Colorado architecture and engineering. It is designed primarily to return to print a guide unavailable for nearly a decade. It will serve as the beginning point for a third edition which will better present a modern perspective on Colorado architecture and engineering encompassing the past twenty years of cultural resource survey.

New styles, forms and types will be added regularly to the online Guide to Colorado's Historic Architecture and Engineering. The guide may be accessed on the Office of Archaeology and Historic Preservation Web site at [www.coloradohistory.org](http://www.coloradohistory.org).

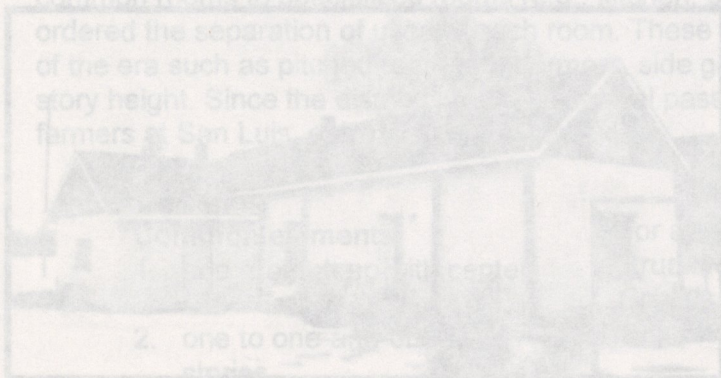
We wish to acknowledge the field work and analytical research of numerous cultural resource professionals whose reports formed the basis for many of the additions to this publication. These individuals include Clayton Fraser, Laurie and Thomas Simmons, Carl McWilliams, and Matt Mondragon-Valdez.

Dale Heckendorf  
Office of Archaeology  
and Historic Preservation  
2003

# Material Types

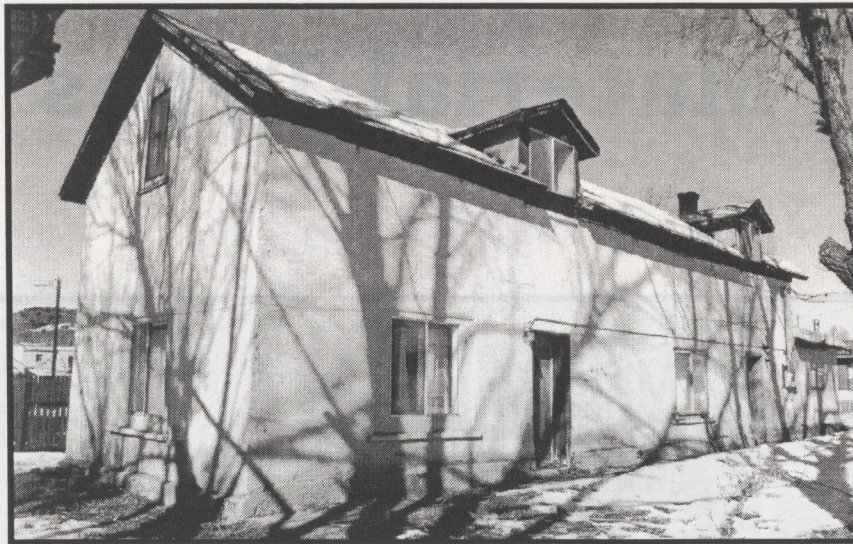


Davenport Lumber Yard, Salida (ca. 1900)



1. side-by-side room plan
2. one to one and a half story height
3. wood porch

## Linear Plan Hispano Adobe House



Linear Plan house in 1998, San Luis

*Jacal* construction typifies the earliest residential structures in the southern San Luis Valley. The single or dual room *jacal* had an interior corner fireplace, an exterior door, and one or two windows. As owners enlarged their *jacales* to accommodate extended families, a series of side-by-side single file rooms with separate entryways and privacy walls developed, creating a single file linear configuration. If the site permitted, the adobe structures continued the single file configuration. In areas with site restrictions, expansion would take on the form of an "L" or "U" shape. The preferred direction for the wings was southerly, with a dominant south-facing axis for single wings. The linear room configuration was characterized by multiple exterior doors and minimal window openings. If the same household shared adjoining rooms, a door was cut through the common interior wall. However, if separate households occupied the building, exterior doors were the norm.

The linear plan was dominant throughout Hispano villages until about the 1940s. The majority of the houses dating to this period followed a single-file axis configuration with the front facing "L" shaped variation being the next most common plan. The "L" variation is typified by the Juan Lobato house. Aside from ruins, the only "U" shaped residence remaining within the San Luis area is the Jacquez Residence and two structural remnants at Chama. New adobe construction by residents following the traditional linear plan is limited.

### Common elements:

1. side-by-side room plan
2. linear, "L" or "U" shaped plan
3. multiple exterior entries
4. minimal fenestration



Lobato House, San Luis

## Center Passage Plan Hispano Adobe House



Valdez House, San Luis

The railroad entered the San Luis Valley by the early 1880s and opened the door for migrating Anglo-Americans. Many emigrants from the East Coast and Midwest brought with them the center passage plan. Two possible structures that might have introduced the plan are either Fort Garland or the Costilla County Courthouse. A classic example is the circa 1890 J.R. Valdez house. The Valdez building is a Late Victorian, one and-a-half story "I" house, with an intersecting centered gable. This structure is one room deep, with a center hallway and ornate wooden porch. Like many of the remaining center passage plans in the San Luis Valley, this house is constructed of adobe and has a symmetrically placed hallway at the facade entrance. Center-passage halls normally are narrower than the other rooms in the building. Typically, builders constructed the hall in a 6-10 feet width. In contrast, rooms were 12-16 feet wide.

Although the center passage plan is often two rooms deep, in the San Luis Valley it more often combined with the Anglo-American "I" house. This form is usually two-rooms wide, one-room deep, and two stories tall. The establishment of commerce and increased agricultural activity resulted in economic prosperity for some families who correspondingly improved their houses and farmsteads. The more prosperous families constructed the center passage plan in the latter part of the 1890s. Consequently, living arrangements in the house shifted from the all-purpose common rooms to specialized rooms (e.g., kitchen, parlor, and bedroom). The central hall ordered the separation of uses of each room. These houses also adopted the other innovations of the era such as pitched roofs with dormers, side gable symmetry, and a one-and-one-half story height. Since the distribution of the central passage houses was limited to the wealthier farmers at San Luis, only a few examples exist.

### Common elements:

1. one room deep with center hall
2. one to one-and-one-half stories
3. wood porch

For additional Hispano Adobe buildings and structures, see *The Culebra River Villages of Costilla County, Colorado*, National Register Multiple Property Documentation Form.

## Pioneer Log



Round log, saddle-notched, side-gabled cabin in Boulder County

Early settlers in the forested parts of the state built pioneer log structures from 1858 through the 1930s. Pioneer log should not be confused with the Rustic style log buildings which were built beginning around 1905.

Generally located in or near mountainous regions, these buildings were constructed of round logs, hewn logs or mill waste (log slabs) and were usually laid on alternating tiers, notched at the corners to fit together. Spaces between the logs were filled with wet moss or clay, animal hair or straw (daubing), and stone or wood strips (chinking). Roofs were canvas, earth, shingles, wood boards, sheet metal, or tree limbs. Gable ends were either log or frame.

The most common roof forms are the front gable and side gable. The gabled-L form is occasionally found. Most Pioneer Log buildings are one-story in height though two-story examples may be found. False front pioneer log commercial buildings also were common. Pioneer Log barns, stables and other agricultural outbuildings are also common.

Log structures may be classified by their corner notching. Common notching types include saddle, V-notch, square, and dovetail, as well as channel (hog trough) and boxed corners.



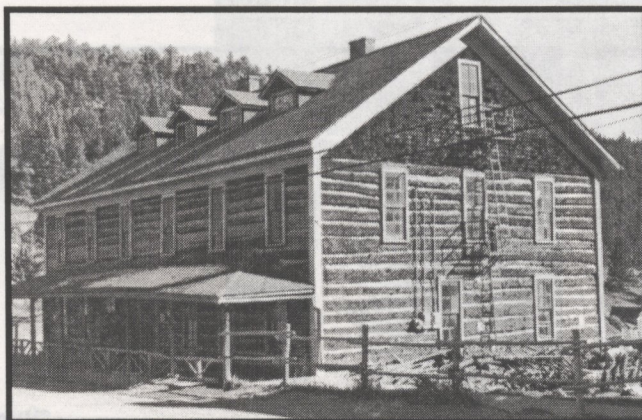
Hewn logs, boxed corners, front gable, and board and batten gable in Boulder County

**Common elements:**

1. log construction
2. round logs, hewn logs or rough milled
3. notched corners
4. simple construction techniques
5. gabled roof



Mill waste, slab walls, front gable cabin in the Eldora Historic District, Boulder County



Hewn log, side gable with shingle gables, Gold Hill

## Sod Construction



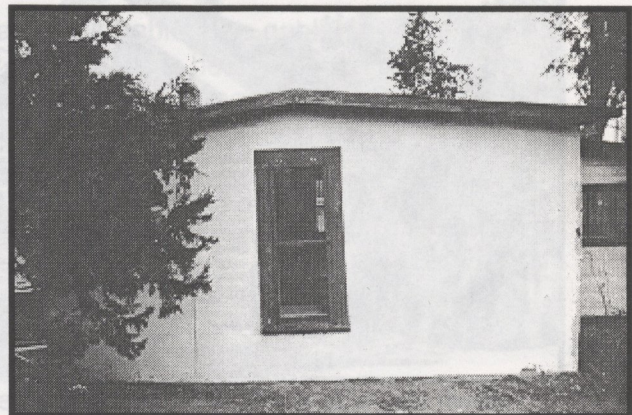
Lafayette

Sod structures date from the early days of settlement in the 1860s through the Depression-era of the 1930s. It was generally considered an inexpensive and very effective method of construction in a plains environment. Very few examples of sod structures exist today in Colorado, and most are slowly deteriorating.

These houses were constructed using large blocks of sod, usually placed grass side down, and laid like bricks. Mud or lime plaster covered the exterior to protect the sod from weathering. Sod blocks are distinguished from adobe by the layer of grass at the bottom of each block.



Louisville



Moyer Sod House

# Architectural Styles



Maxwell House, Georgetown

## Greek Revival



Central City

Greek Revival is very rare in Colorado and the few examples that exist date from between 1860 and the mid-1870s. The style is more appropriately called Greek "Survival" because it is an unusually late appearance of a style that began in the Eastern United States in the 1820s and fell out of favor by 1860. Colorado examples represent a late adoption of the style.

Elements characteristic of Greek Revival in Colorado include pedimented lintels and architraves over windows and doors, pilaster boards at the corners, engaged piers, transoms and sidelights surrounding entrances, and slim, refined Doric or Tuscan columns.

Most all Greek Revival buildings are wood-frame and clapboard sided, and they are predominately residential. Most are found in the state's early mining towns.

### Common elements:

1. pediment-shaped window head
2. transom
3. sidelights
4. pilaster corner boards
5. Doric or Tuscan columns

Greek Revival



Central City



Denver



Paonia

## Gothic Revival



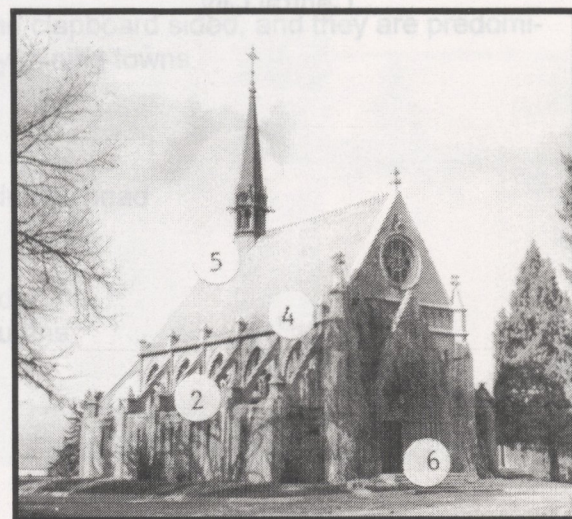
Denver

Gothic Revival is best characterized by the pointed-arched window, steeply pitched roof, and picturesque composition.

The English/French examples are predominately ecclesiastical and are vernacular versions of late Medieval churches. Characteristic elements include massive towers, either flat or topped by a spire, stepped and flying buttresses, deeply recessed openings, steeply pitched roofs, pointed arches, and masonry construction.

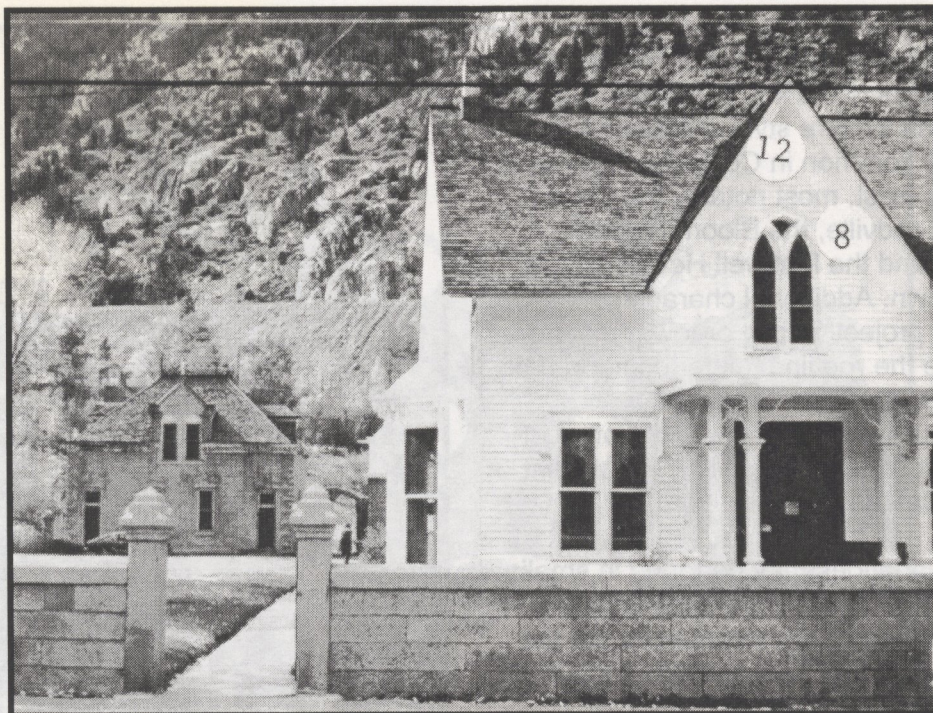
### Common elements:

1. massive towers
2. flying buttress
3. stepped buttress
4. pointed arch window
5. steeply pitched roof
6. deeply recessed entrance



Denver

## Carpenter Gothic



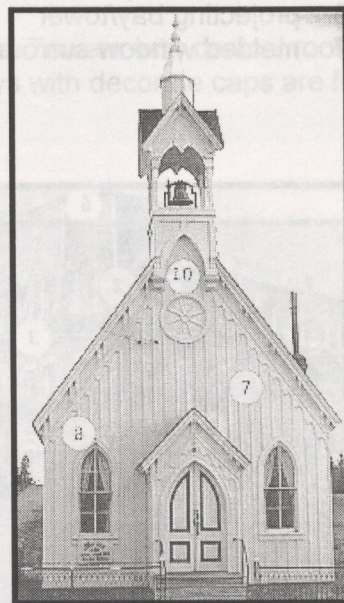
Georgetown

The Carpenter Gothic applies the Gothic Revival style to wood-framed and sided buildings. The picturesque and decorative style is evident on both churches and houses. These structures generally feature board and batten siding, decorative bargeboards, pointed-arched windows, and a steeply pitched roof.

Following the advice of contemporary landscape architect and author of Andrew J. Downing, the picturesque Gothic Cottage displays board and batten or clapboard siding, pointed-arched windows, a steeply pitched roof, and some "gingerbread" decoration. Its chief characteristics are a steep central gable and a one-story veranda.

### Common elements:

7. board and batten or clapboard siding
8. gingerbread trim
9. pointed-arched windows
10. wheel window
11. one-story veranda
12. steep central gable



Fairplay

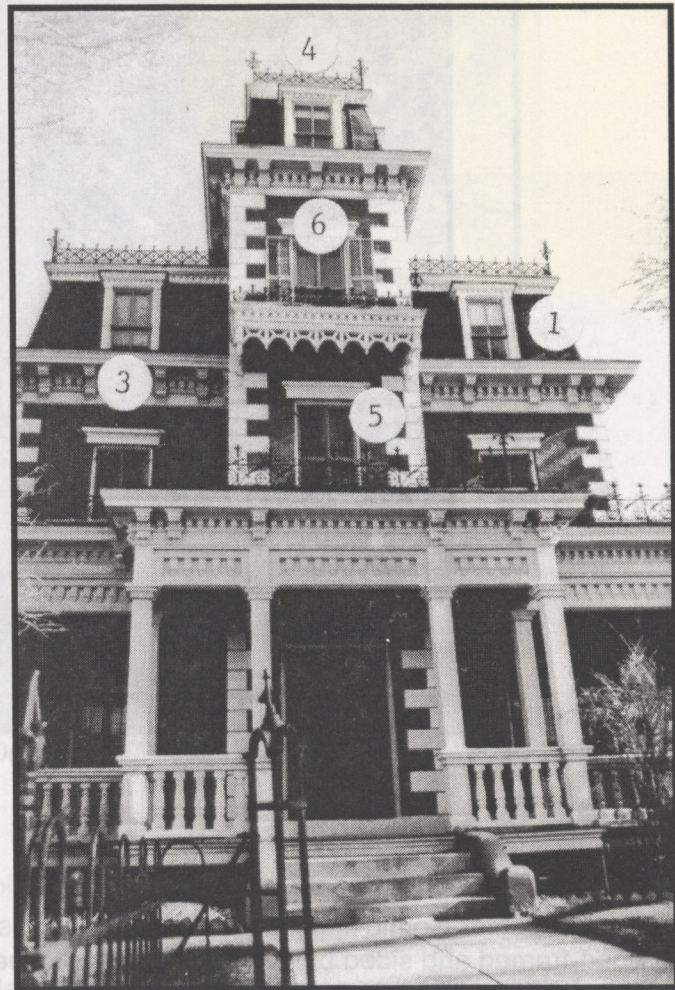
## Second Empire

The mansard roof with either concave or straight sides is the key to distinguishing the Second Empire style. Although not extremely common in Colorado, high style examples exist, most notably the Tabor Hotel in Leadville, the Bloom House in Trinidad, and the Maxwell House in Georgetown. Additional characteristics include a projecting bay or tower extending above the roofline, either contoured or to one side, pedimented windows or molded surrounds, quoins and roof cresting. Cornices are bracketed, reminiscent of the Italianate style.

Simpler variations may be found in small homes. The major elements of the style visible on these small residences are the mansard roof and pedimented windows

### Common elements:

1. mansard roof
2. pedimented windows
3. bracketed windows
4. roof cresting
5. quoins
6. projecting bay/tower
7. molded window surrounds



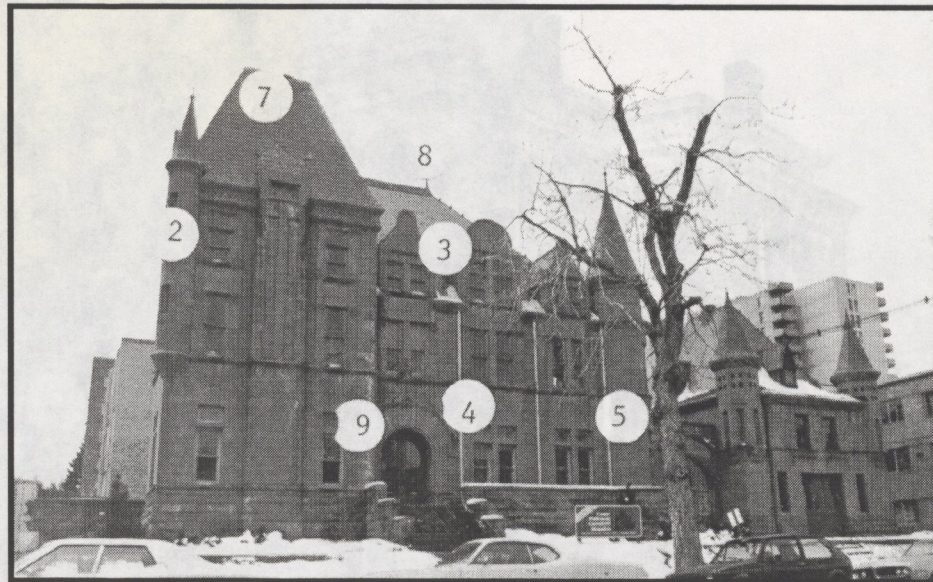
Trinidad



Leadville



Denver



Denver

The Châteauesque or French Château style rarely survives in Colorado today. Examples existed at the turn of the twentieth century in the Capitol Hill area of Denver but only one high style example remains.

The steeply pitched gable or hip roof and multiple towers with conical roofs define the Châteauesque style. Dormers with shaped gabled and paired windows divided by mullions and transoms are also common characteristics.

Simpler examples exhibit elements of the style on a smaller scale. Towers with conical roofs and dormers in the steeply pitched roof are evident. Tall chimneys with decorate caps are found on some examples.

**Common elements:**

1. steeply pitched roof
2. towers with conical roof
3. dormers
4. paired windows
5. transom bar
6. mullions
7. truncated hip roof
8. roof cresting
9. semicircular arches



Denver

## Italianate



Denver

Like many Victorian-era styles, Italianate emphasized vertical proportions and richly decorative detailing. Designers and builders used the style on residential, commercial, and industrial structures throughout Colorado from about 1870 up until the turn of the century.

Italianate is characterized by a low pitched hip roof, wide overhangs, bracketed cornice, a variety of fenestration (usually very tall, narrow, double-hung, one-over-one windows), molded window surrounds, and occasionally a cupola or balustrated balcony. Simple Italianate structures have a hip roof, bracketed eaves, and molded window surrounds. A more elaborate or high style example may feature arcaded porches, quoins, towers, and ornate detailing.

There are also some Italianate structures that are flat roofed, with a front bay and entrance, and a decorated cornice.

### Common elements:

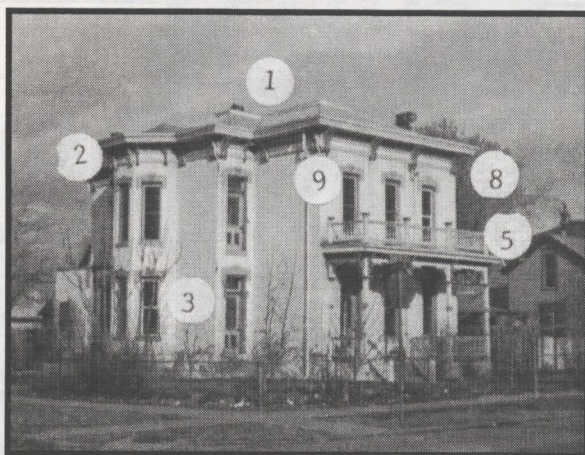
1. low pitched hip roof
2. bracketed cornice
3. tall, narrow windows
4. molded window surrounds
5. balustrated balcony
6. arcaded porch
7. towers
8. wide overhanging eaves
9. paired brackets
10. cupola



Buena Vista



Central City



Denver

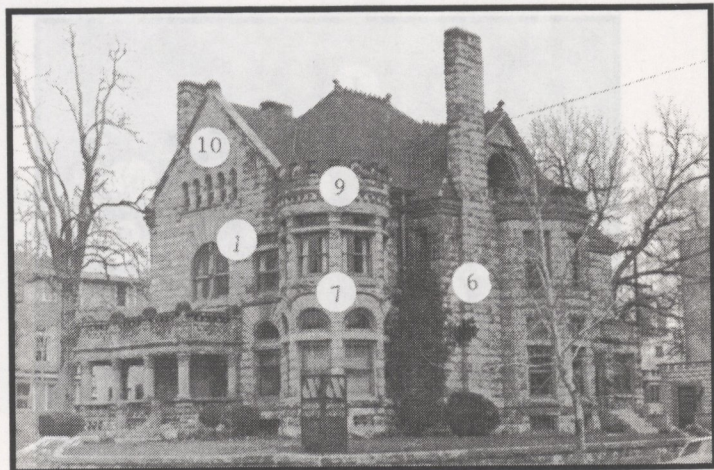
## Romanesque Revival



Sterling

The chief characteristic of the Romanesque Revival style is the semicircular arch, used for window and door openings as well as a decorative element along the corbel table. Other characteristics include an archivolt of compound arches and square towers of different heights and various roof shapes. A crenellated tower parapet is common. The Romanesque Revival style, exemplified by St. Anthony's Church in Sterling, is found mainly on churches and large institutional buildings.

Richardsonian Romanesque, named after architect Henry Hobson Richardson (1838-1886), is characterized by heavy, rock-faced stone, round masonry arches, contrasting colors, transom windows arranged in ribbon-like patterns, square towers, and sparse fenestration. The Pueblo Union Depot is as similar to Richardson's work as any structure in Colorado, and yet, is not a pure example. Most of the Richardsonian Romanesque structures are variations of the style, employing selected Richardsonian elements.



Denver

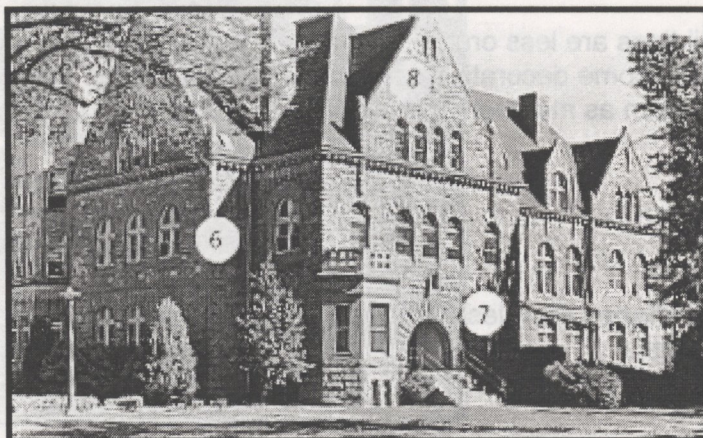
## Romanesque Revival



Union Depot, Pueblo

### Common elements:

1. semicircular arch
2. corbel table
3. archivolt
4. compound arch
5. square tower
6. rock-faced stone
7. round masonry arches
8. contrasting colors
9. transom windows in ribbon pattern



Denver

## Queen Anne



Denver

Queen Anne is perhaps the most ornate style of the Victorian period evident in Colorado. Popular between 1880 and 1910, the style varies from the highly decorative to a more restrained version found in many residential neighborhoods. General characteristics include a vertical orientation, asymmetrical massing, corner towers and bays, prominent decorative porches, projecting gables, and contrasting materials, particularly brick and wood.

The degree of ornamentation usually distinguishes the high style. Ornamentation is emphasized on a high style Queen Anne through the use of scalloped and painted shingles in the gables, decorative bargeboards, sunburst detailing, and turned spindles on porches and balconies. The corner tower is prominent, but not always found on a high style building, nor is it always located on the corner.

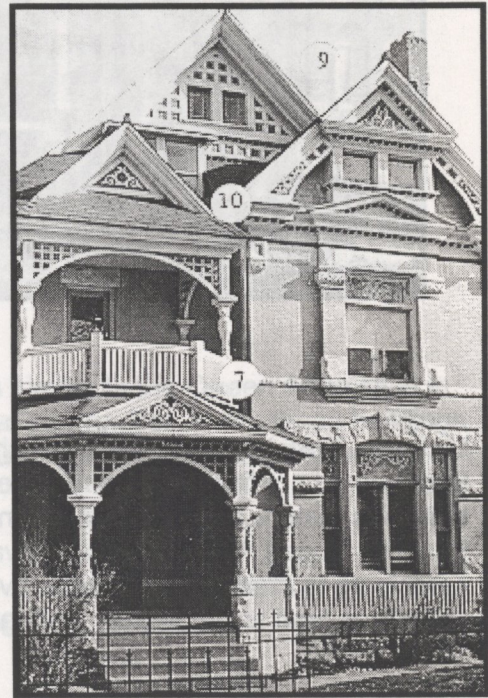
Simpler Queen Anne buildings are less ornate, but usually feature shingled gables, asymmetrical massing, and some decorative detailing. These examples have enough decoration to distinguish them as members of the stylistic category.

### Common elements:

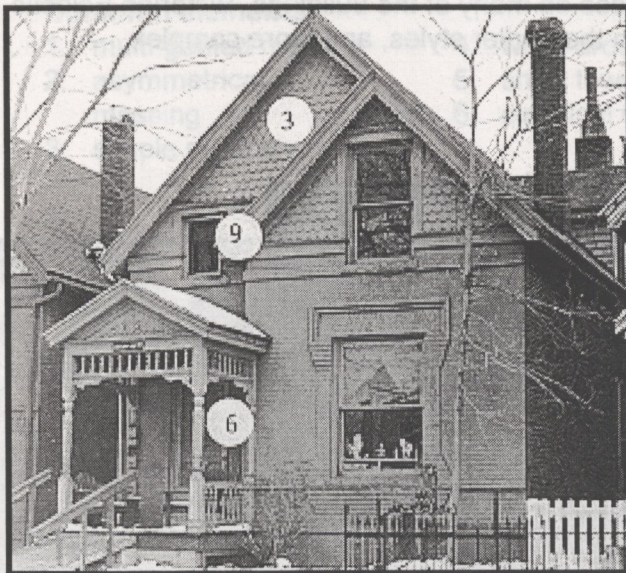
- |                                  |                    |
|----------------------------------|--------------------|
| 1. corner tower                  | 6. turned spindles |
| 2. dormers                       | 7. porch           |
| 3. scalloped and shaped shingles | 8. conical roof    |
| 4. iron roof cresting            | 9. multiple gables |
| 5. sunburst detailing            | 10. bargeboard     |



Denver



Denver



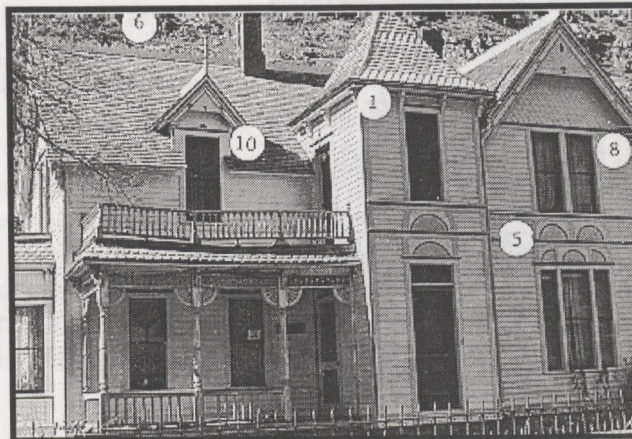
Denver

## Victorian Eclectic



Durango

Victorian Eclectic structures are highly decorative and exhibit stylistic influences so numerous that they do not fit into any one style of architecture. Dating from the 1870s through 1900, these buildings feature an unusual combination of elements from a variety of Victorian styles. Details from the Queen Anne, Gothic Revival, and Italianate styles were borrowed most often, combining to create highly decorative surfaces on many of the buildings. Victorian Eclectic structures tend to be broader and taller than the earlier styles, and more complex.



Georgetown



Grand Junction

Edwardian buildings are basically post-Victorian residences similar to the Queen Anne style in form and massing but lacking ornamentation. Sometimes called Princess Anne, these buildings feature multi-gabled roofs, asymmetrical massing, simple surfaces, and occasionally wrap-around porches, a short tower, and classical detailing.

**Common elements:**

- |                         |                      |
|-------------------------|----------------------|
| 1. multi-gabled roof    | 4. wrap-around porch |
| 2. asymmetrical massing | 5. short tower       |
| 3. simple surfaces      | 6. classical details |



Aguliar



Boulder

## Shingle



Colorado Springs

Like Queen Anne, the Shingle style was influenced by English architect Richard Norman Shaw. The style is simpler than Queen Anne with a more horizontal emphasis. It is characterized by the uniform use of wood shingles as the primary surface material without interruption by corner boards. Multi-planed or gabled roofs with long slopes and narrow eaves, multi-light casement or sash windows, and asymmetrical facades are also characteristic of these two- or three-storied buildings.

### Common elements:

1. wood shingle wall surfaces
2. gently sloping gable roofs
3. multi-light casement or sash windows
4. asymmetrical facade
5. narrow eaves
6. conical-roofed round towers



The Gates Mansion in Denver combines the Shingle style with Richardsonian Romanesque.

## Classical Revival



Denver

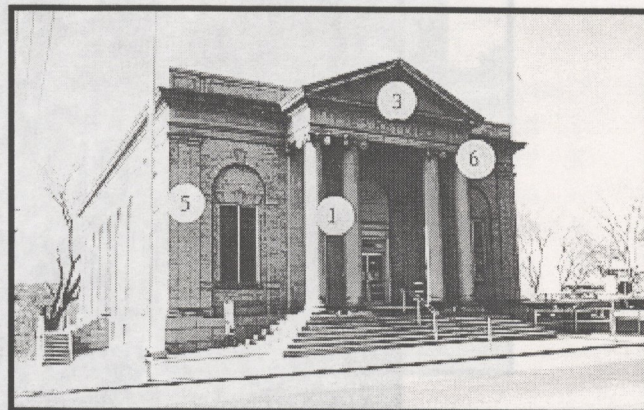
Classical Revival signaled a return to the classical forms of Greece and Rome following the elaborately decorated and picturesque styles of the Victorian period. Dating from the late 1890s through 1920, Classical Revival represents a more subdued expression than the ostentatious or grandiose Beaux Arts style and is evident mainly on large institutional buildings in Colorado.

Characteristics of Classical Revival include colossal porticos, large columns, pilasters, pedimented windows, and domes. The buildings are generally masonry structures of monumental proportions, using terra cotta, brick, and stone materials.

Often, classical details such as large column porticos are combined with Colonial Revival elements on residences, leading to some confusion as to the style. To avoid this problem, residences with classical elements are considered examples of Colonial Revival and only large institutional buildings with classical details are classified as Classical Revival.

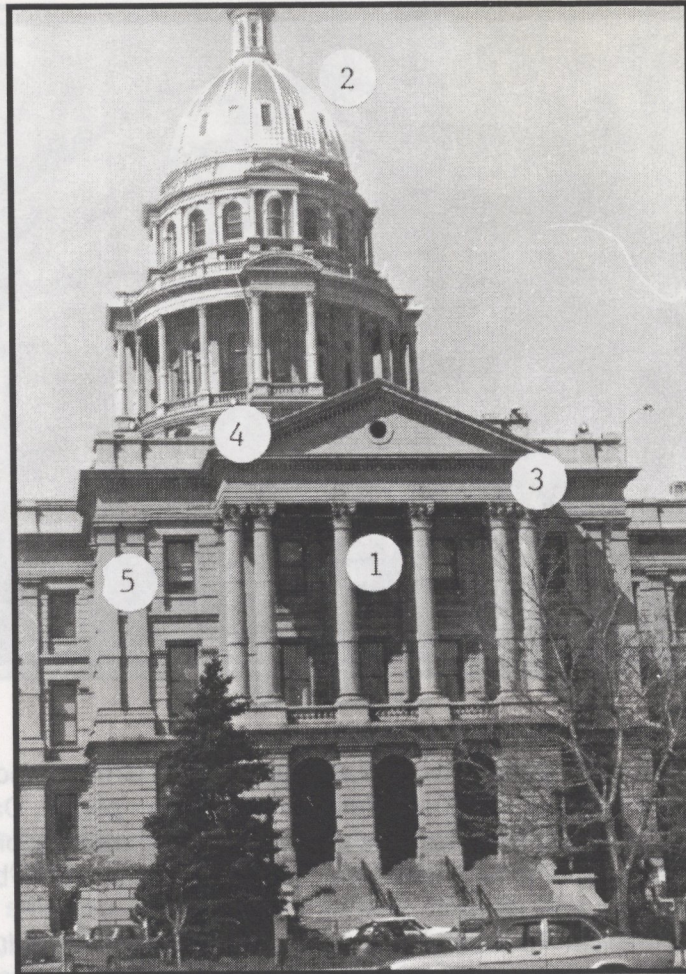
### Common elements:

1. large columns
2. dome
3. portico
4. pediments
5. pilasters
6. Ionic columns
7. attic story
8. dentils
9. classical frieze



Trinidad

Classical Revival



Denver



Denver



International Trust Company Building (1912), Denver  
Photograph circa 1925



Weld County Courthouse (1917), Greeley  
Photograph ca. 1920

## Renaissance Revival



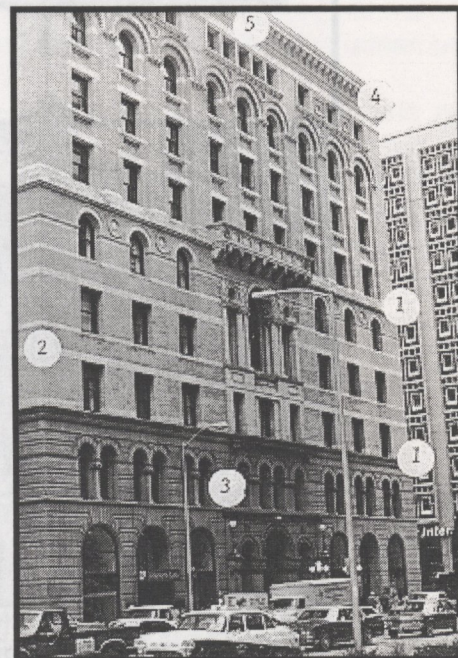
Denver

Renaissance Revival, also known as Italian Renaissance, is best identified by the horizontal divisions, usually defined by belt or string courses, and the different treatment in each division. This is sometimes accomplished by using different materials for each story or section and by changing window surrounds, shapes, or sizes. The Equitable Building in Denver is the textbook example. Arcades and arched openings, quoins, projecting cornices with modillions and dentils, and engaged columns and piers also characterize this style.

Simpler examples are less ornate and smaller in scale. They do, however, employ some of the same details, particularly arcades, quoins, and enriched cornices. This style was most common in Colorado between 1900 and 1930 and is distinguished from the Classical Revival by its lack of monumental porticos and columns.

### Common elements:

1. horizontal division
2. belt/string course
3. arcades
4. modillions
5. enriched cornice
6. quoins
7. dentils

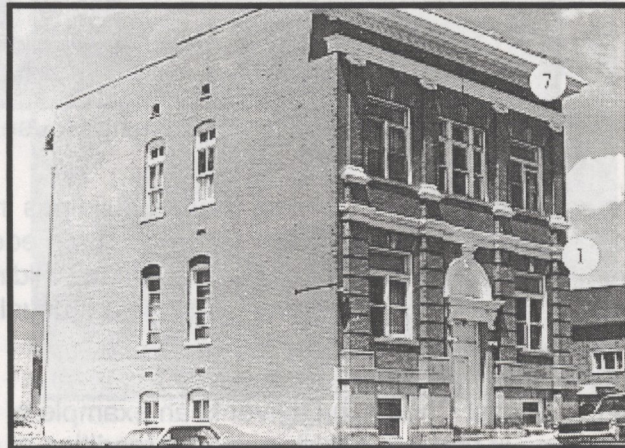


Equitable Building, Denver

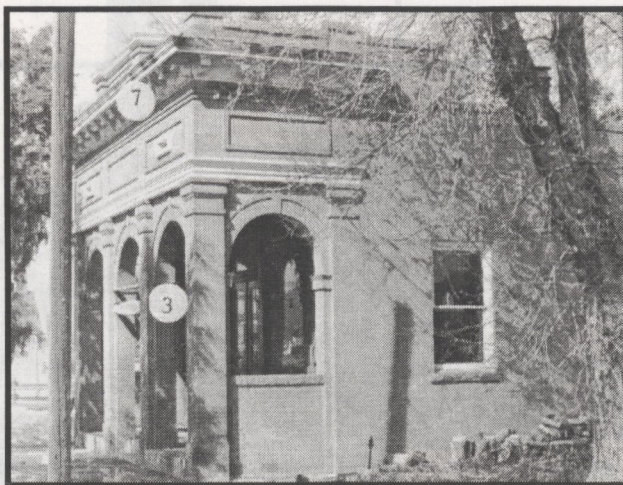
## Renaissance Revival



Fort Collins



Leadville



Elizabeth

## Colonial Revival



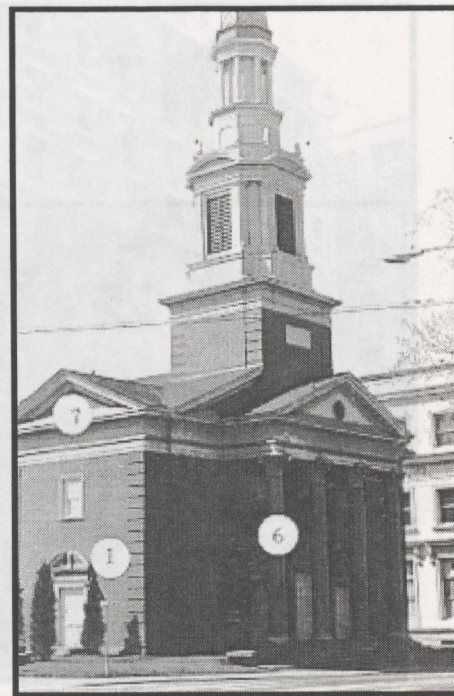
Fleming House, Denver

There are three types of Colonial Revival buildings in Colorado: "historically accurate" reproductions of the 17th century Georgian and Federal style; Colonial or Classical elements applied to basically Victorian or Post-Victorian buildings; and very simple houses with a few Colonial details. Colonial Revival buildings are usually brick and include residences, churches and hotels.

The First Baptist Church in Denver is an example of the first type in that it is a fairly accurate rendition of a Wren inspired New England church. There are also Federal and Georgian examples of homes scattered around Denver.

The Fleming House in Denver represents the second type. In this case a classical portico is placed on a somewhat typical late Queen Anne building. These Neo-Classical elements lead to confusion and the temptation to place these structures in the Classical Revival category. To avoid this problem, residences with classical elements are considered to be Colonial Revival.

The third type of Colonial Revival house is the most common. These are the simple gabled houses with several Colonial elements such as broken pediments, eight-over-eight sash windows, fanlights, and sidelights, and shutters.



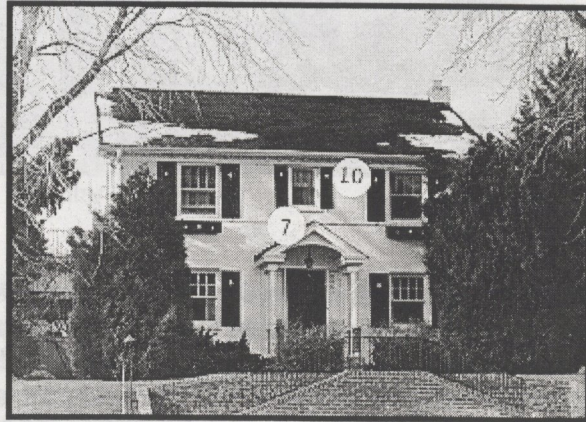
First Baptist Church, Denver



Denver

**Common elements:**

- 1. broken pediments
- 2. 8-over-8 sash windows
- 3. portico
- 4. fluted columns
- 5. Doric columns
- 6. Corinthian columns
- 7. pediments
- 8. fanlight
- 9. sidelight
- 10. shutters
- 11. dormer
- 12. eyebrow dormer



Denver



Denver

## Dutch Colonial Revival



Denver

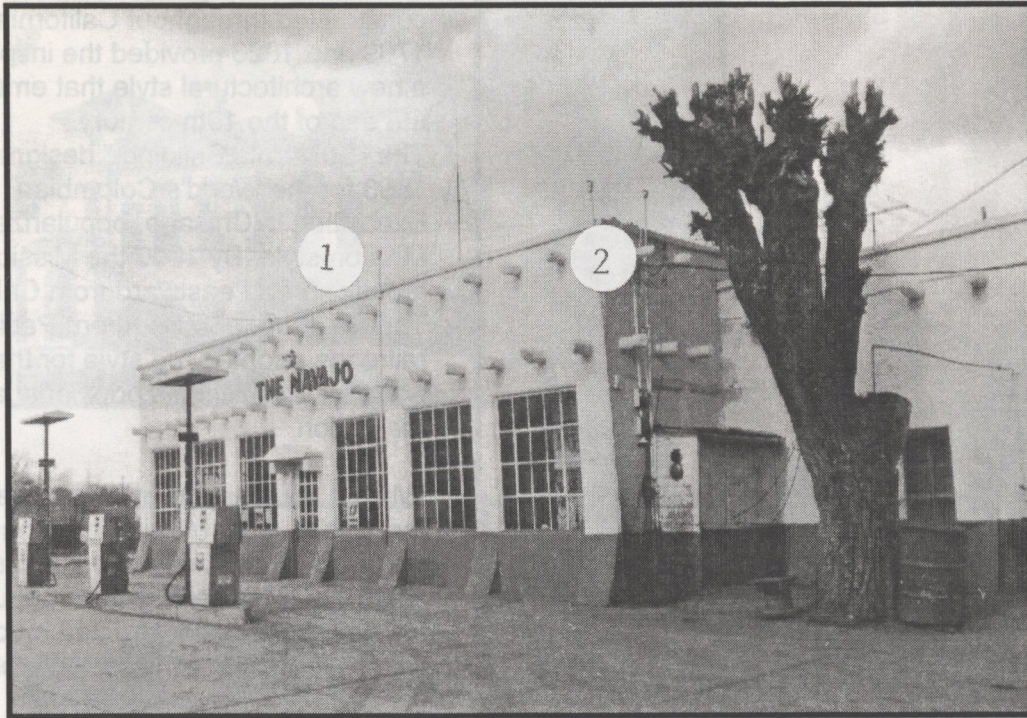
The gambrel roof is the distinguishing feature of the Dutch Colonial Revival. Primarily a residential style, it was popular in Colorado between 1900 and 1925. Other characteristic elements included wide overhangs, dormers, small oval windows in the gable ends, and a porch under the overhanging eaves of the gambrel roof, supported by columns. The building may be side-gabled, front-gabled, or form intersecting gables. A steep, stepped gable, reminiscent of Flemish architecture, is also seen on occasion.

### Common elements:

1. gambrel roof
2. wide overhangs
3. gable end chimneys
4. round windows in gable end
5. steep stepped gable
6. porch under overhanging eaves
7. 8-over-8 windows
8. dormers



Denver



Aguilar

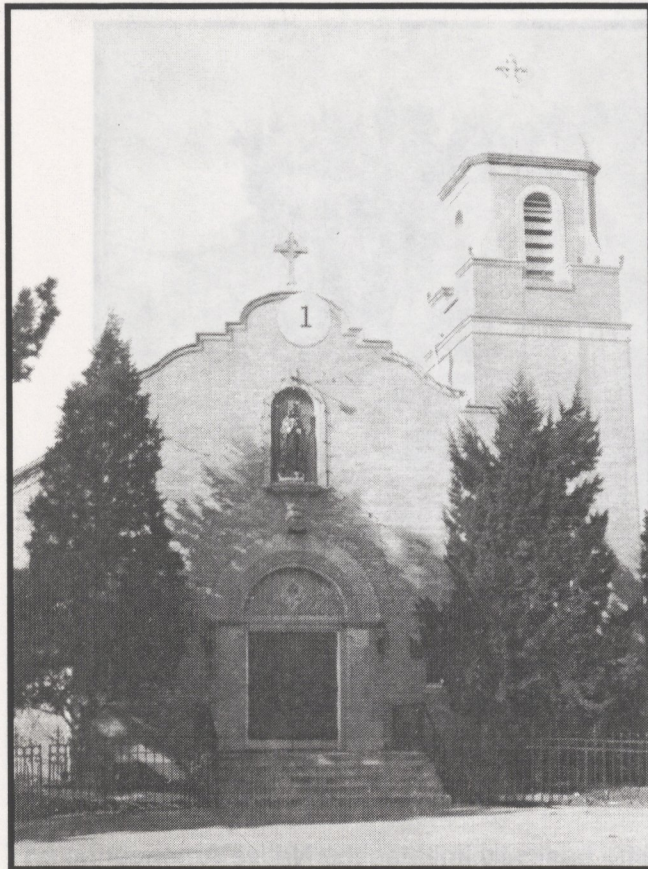
Pueblo Revival, popular between 1905 and 1940, basically imitates the Native American pueblos of the Southwest. The key distinguishing elements are the projecting roof rafters called vigas. These are generally round or square rafter ends protruding from the wall near the roofline. The roof of the Pueblo Revival structure is usually flat or slightly sloping behind a low parapet. Second and third stories are occasionally stepped or terraced. Round corners, battered walls and straight-headed windows are also characteristic. Most structures are stucco and meant to imitate the adobe walls of the Indian pueblo. Some houses may combine elements of the Spanish Colonial Revival with the Pueblo Revival style.

**Common elements:**

1. flat roof
2. projecting roof rafters (vigas)
3. battered walls
4. straight-headed windows
5. stepping or terracing
6. stucco walls



Yucca Café, Aurora, in 1947



Denver

windows, entries and arcades. A small round window or ornament may appear in the center of the gable. Roofs may have overhanging eaves with exposed rafters. Towers and iron balconies are found on larger buildings.

The Mission style has very little decorative detailing, in contrast to the more ornate Spanish Colonial Revival style. Generally, the only surface ornamentation on a Mission building is a plain string course that outlines windows or arches. The curvilinear-shaped roofline distinguishes the Mission from the similar Mediterranean style.

**Common elements:**

1. curvilinear-shaped gable
2. round arched windows and entries
3. tile roof
4. arcades
5. stucco or plaster finish
6. string course

The numerous Spanish missions constructed throughout California between 1769 and 1823 provided the inspiration for a new architectural style that emerged at the end of the 19th century.

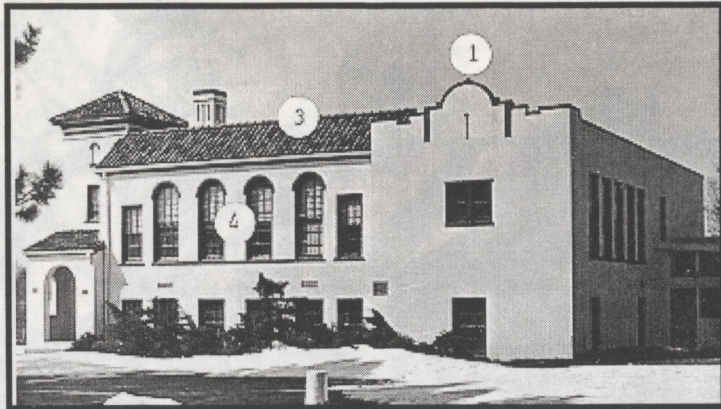
The "California Building," designed in 1893 for the World's Colombian Exposition in Chicago, popularized the Mission style. By 1900 the Mission style rapidly spread eastward from California. The Santa Fe and Southern Pacific railroads adopted the style for their depots and hotels, fueling its popularity across the region.

While a few early examples appeared in the 1890s, most Mission buildings in Colorado were constructed between 1900 and 1930. This style was so popular that many structures constructed much earlier were remodeled with Mission elements.

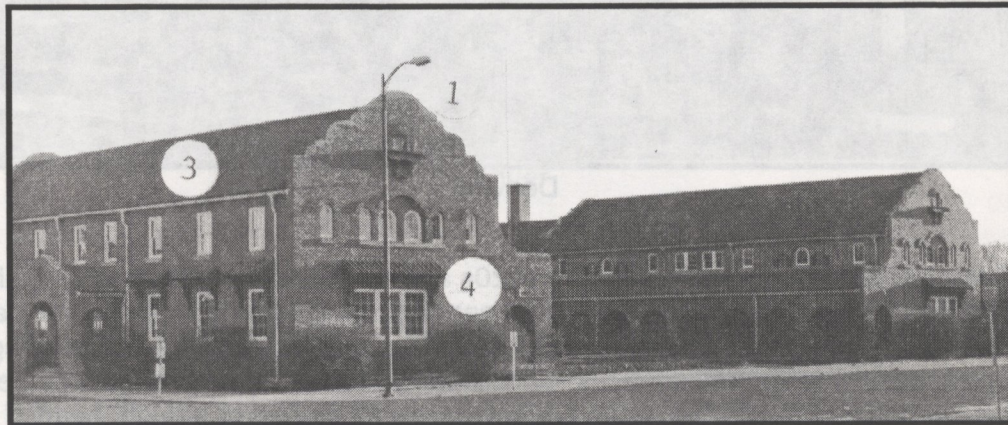
The Mission style is easily recognized by the curvilinear-shaped gable wall or the low parapet wall rising above the roofline. The style is characterized by smooth stucco or plastered wall devoid of ornamentation. The roof is usually tile, and semicircular arched openings form



Denver



Kiowa



Alamosa



Alamosa

## Spanish Colonial Revival

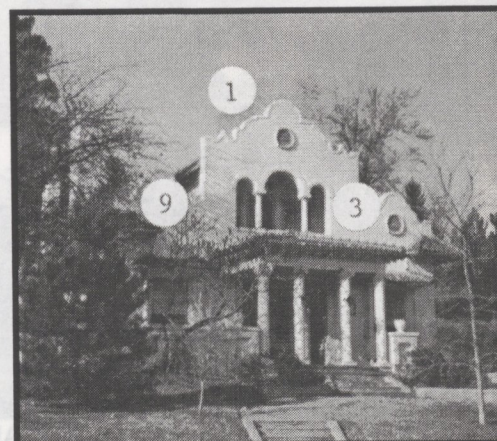


Denver

Spanish Colonial Revival, popular during the 1920s and 1930s, is characterized by elaborately carved decorations surrounding windows, entrances and cornices. In contrast to the plainer, flat surfaces of the Mission and Mediterranean styles, the Spanish Colonial Revival building exhibits more complex, deeply sculptured surfaces. Curvilinear gables and parapets, arcaded entrances and porches, wrought iron detailing around openings, round arched or straight-headed windows, and heavy tile roofs are also characteristic elements of this style. Stucco is the most common exterior finish and is generally painted white or a light color. Spanish Colonial is a more decorative style than either the Mission or Mediterranean styles.

### Common elements:

1. curvilinear gable
2. heavy tile roof
3. arcaded entrance or porch
4. wrought iron grillwork
5. ornately carved details
6. round arched windows
7. straight-headed windows
8. bell tower
9. stucco/plaster finish

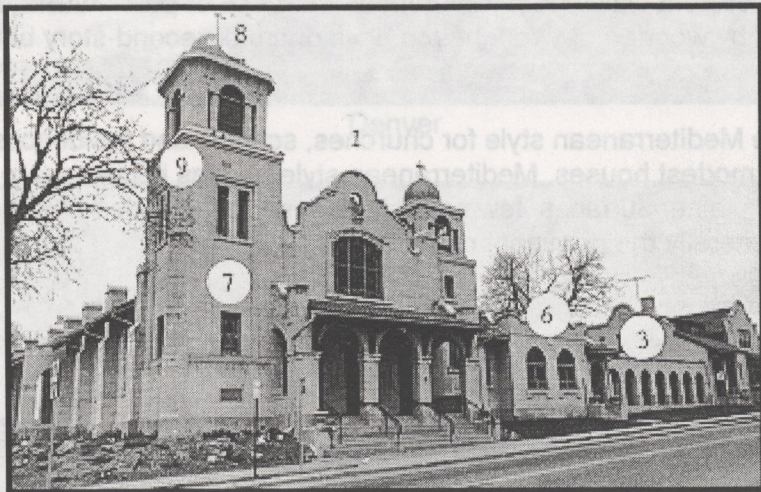


Denver

**Spanish Colonial Revival**



Denver



Denver

## Mediterranean



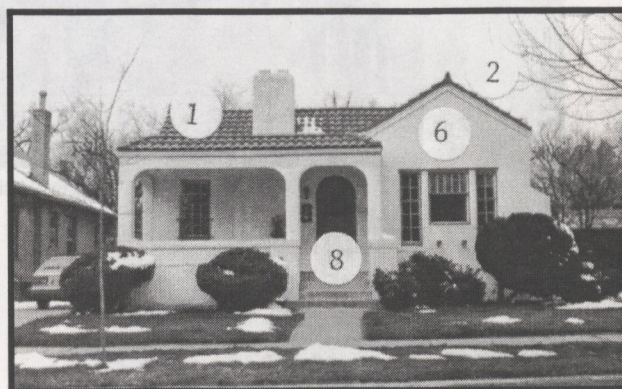
Denver

The key to distinguishing the Mediterranean style is the tile roof and restrained ornamentation (as opposed to the elaborate details on a Spanish Colonial structure). Built in Colorado during the 1920s, these structures are generally stucco or brick, often painted white to contrast with the brightly colored roof tiles. Roofs are low pitched gable or flat (behind a parapet) on smaller houses and are low pitched hipped on some larger homes. Another characteristic feature is the extension of a side or front wall to form an arcaded entrance or porch. Windows are sometimes casements, framed by wooden or wrought iron grills or small second-story balconies called balconets.

Designers used the Mediterranean style for churches, schools and residences, both on a grand scale and on more modest houses. Mediterranean style houses in contrast to Spanish Colonial houses have flat or plainer surfaces, few projections, and more limited ornamentation. The heavy tile roof is generally the dominant characteristic.

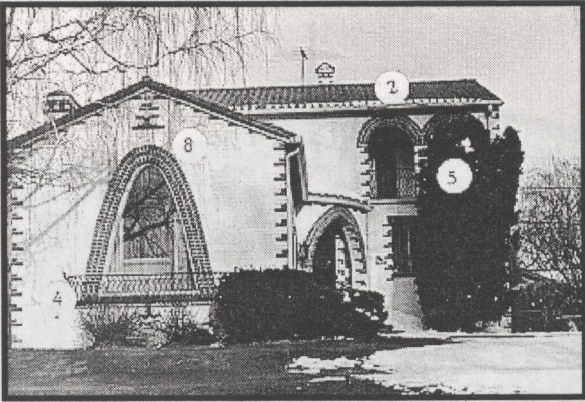
### Common elements:

1. heavy tile roof
2. low pitched gable
3. low hipped roof
4. wrought iron grille work
5. arcaded entrance/porch
6. stucco finish
7. casement window
8. arched entrance/window



Denver

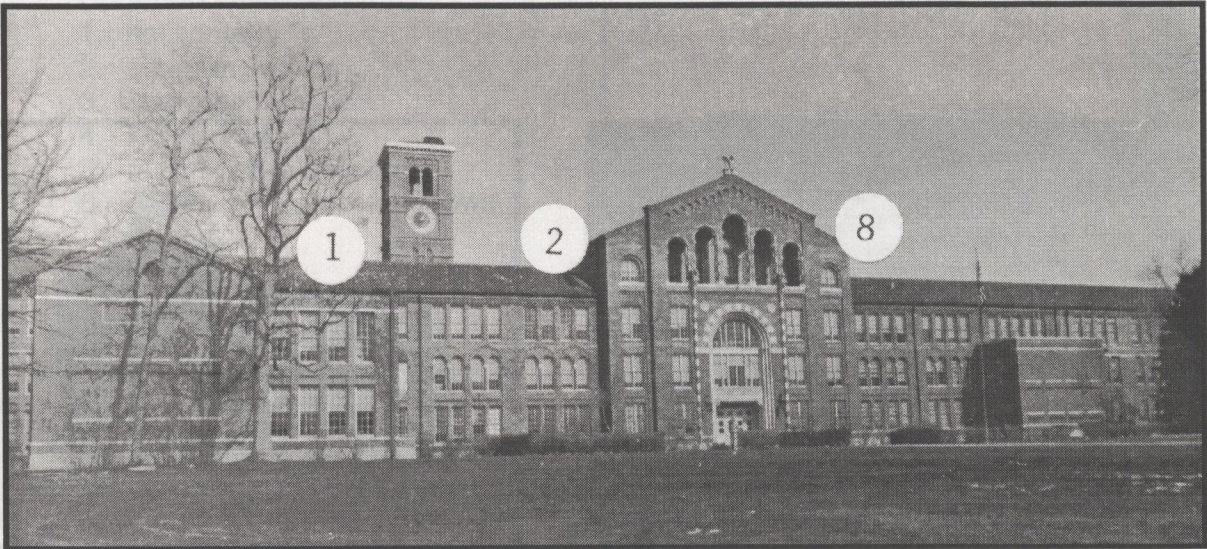
Mediterranean



Denver



Denver



Denver

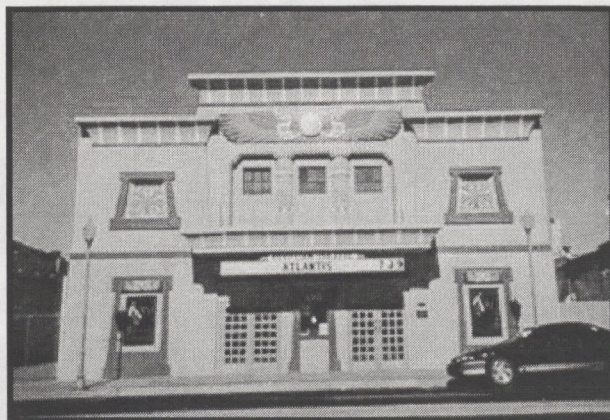
## Exotic Revival



Denver

The Exotic Revival is primarily represented by Oriental or Middle Eastern elements and covers the period of 1900 to the 1940s. It includes Chinese, Turkish, Byzantine, Egyptian, Moorish, and Venetian styles, and is most commonly seen in theater architecture. Mayan influenced styling from the Middle Americas also falls in the classification.

Most Exotic Revival buildings are "one-of-a-kind" in Colorado because so few examples exist. The Moorish/Byzantine Revival is most often seen in apartment buildings and commercial buildings. Egyptian structures have all but vanished but are still evident in cemetery mausoleums.



Delta



Denver

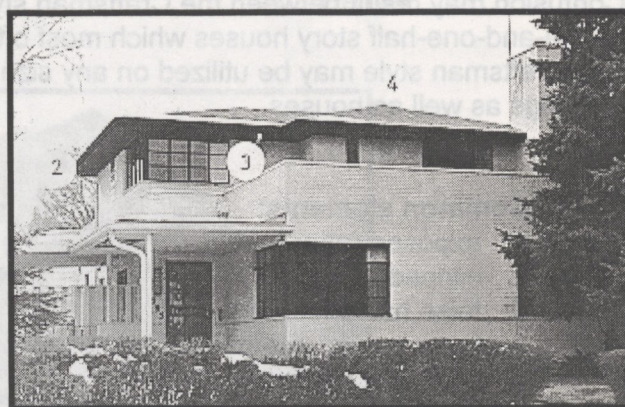


Denver

The Prairie style, developed and popularized by Frank Lloyd Wright, sought to reflect the rolling Midwestern prairie. What emerged was a style characterized by an emphasis on horizontality, particularly exemplified by low, flat rooflines and extended overhangs. In Colorado, this style was popular between 1910 and 1930 and is most often seen in Denver. While the flat roof with wide overhanging eaves is most common, occasionally the roofline is cantilevered over the walls to create deep shadows. Small casement windows arranged in continuous bands, stained glass windows and limited decoration are also characteristic of the Prairie style.

**Common elements:**

1. horizontality
2. projecting eaves
3. casement windows
4. low pitched roof
5. raised central block
6. continuous band of windows



Denver

## Craftsman



Denver

The Craftsman style structure emerged from the Arts and Crafts movement of the early 20th century, a philosophy which stressed comfort and utility through the use of natural materials and a lack of pretension. Exposed rafter ends, overhanging eaves, clipped gables, and large porch columns replaced the more delicate and intricate detailing of the Victorian period. In addition to these characteristics, windows consisted of divided lights in the upper sash and a single light in the lower sash. Some Craftsman houses display a small amount of false half-timbering (not to be mistaken for the Tudor Revival style which has significant amounts of half-timbering). Confusion may result between the Craftsman style and the Bungalow form. Bungalows are one to one-and-one-half story houses which most often employ the elements of the Craftsman style. The Craftsman style may be utilized on any size building and is often found on apartment buildings as well as houses.

### Common elements:

1. exposed rafter ends
2. clipped gable
3. false half-timbering
4. knee braces at eaves
5. divided upper window lights
6. large porch columns
7. battered porch columns
8. overhanging eaves



Denver



Denver



Denver



Denver



Denver

## Tudor Revival

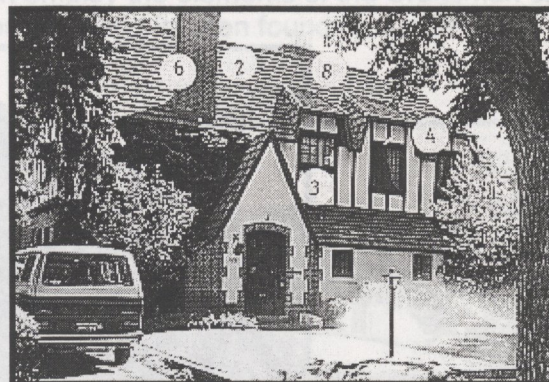


Denver

The most dominant features of the Tudor Revival style are the false or ornamental half-timbering, which covers the upper story, and the steeply pitched roof. Exterior texturing, through the use of brick, stone, or stucco, together with the half-timbering and asymmetrical massing, gives a Tudor Revival style building a picturesque composition. Constructed in Colorado primarily during the late teens and the 1920s, these houses also feature gabled or hipped roofs with tile, slate or shake shingles, and decorated chimney detailing. Windows are generally tall and narrow multi-light casements with an occasional bay window.

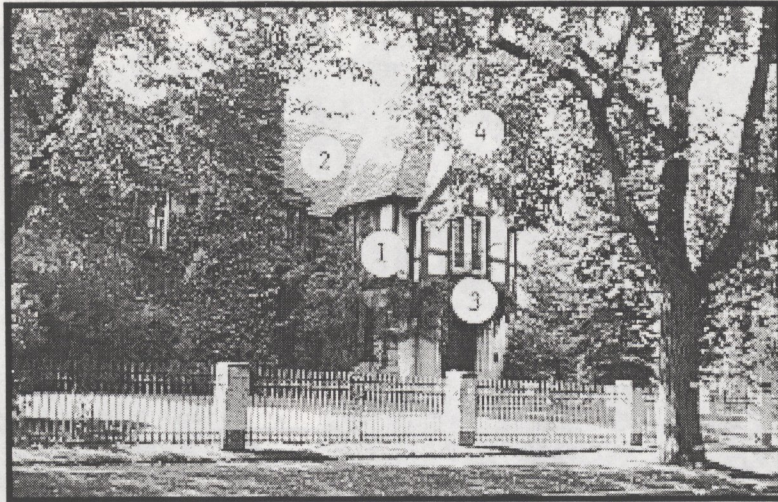
### Common elements:

1. half-timbering
2. steeply-pitched roof
3. casement windows with mullions
4. clipped gables
5. combination hipped and gabled roof
6. decorative chimney detailing
7. bay window
8. heavy shingles in tile or slate
9. textured exterior



Denver

Tudor Revival

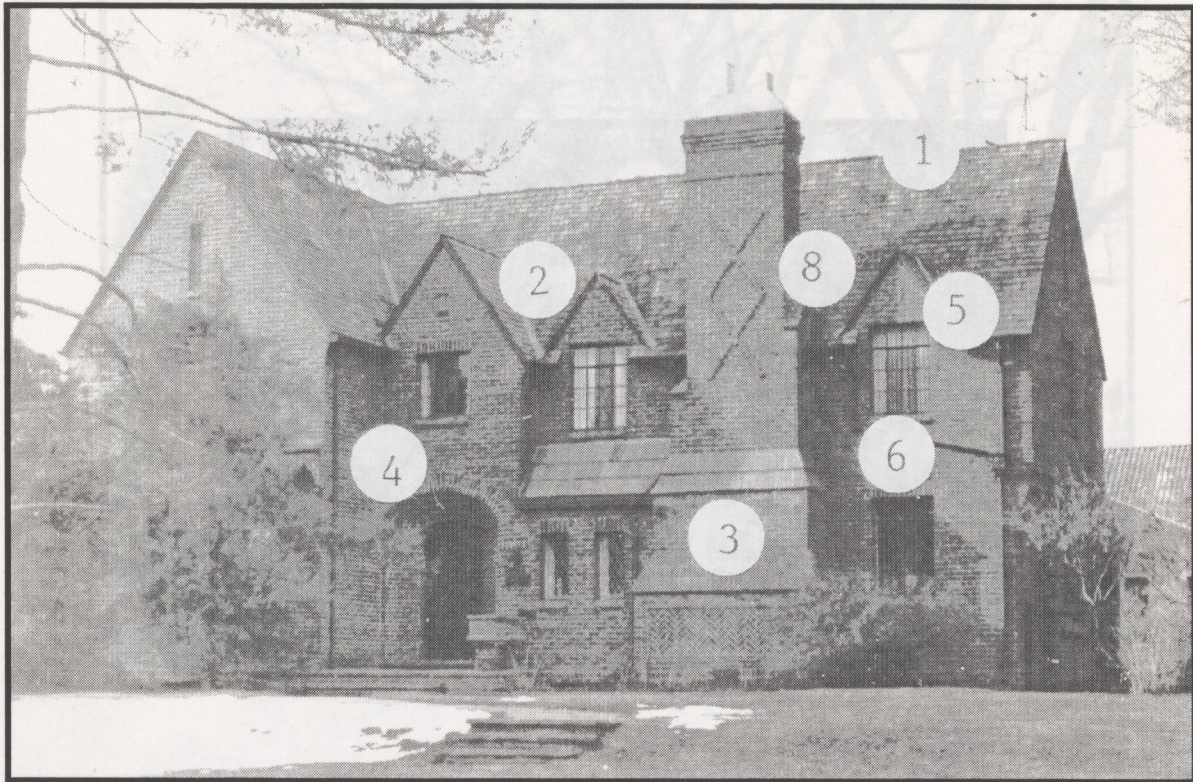


Denver



Denver

## Jacobean / Elizabethan

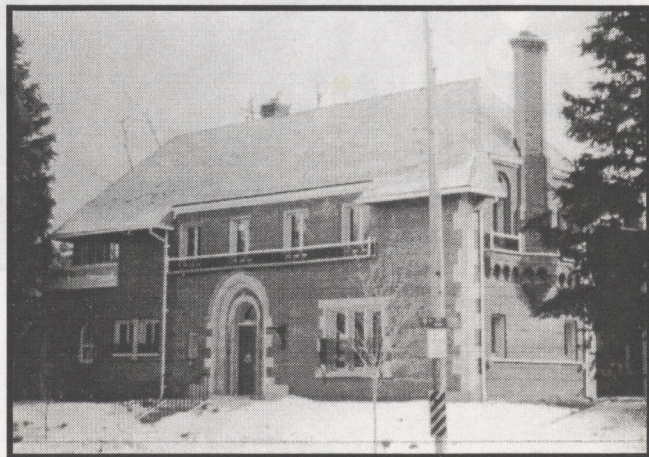


Denver

The Jacobean/Elizabethan style is characterized by a steeply pitched roof with intersecting gables or dormers, round arched entrance, and decorative brickwork. Generally, residential structures were built between 1920 and 1940 and are of brick, stone or stucco. Two or more stories in height, buildings of this style also feature casement windows, occasionally divided by heavy mullions, and facade chimneys with diagonally set stacks or flues. Half-timbering is used occasionally but is limited to the gable ends. Jacobean/Elizabethan buildings are generally constructed of one external material in contrast to a Tudor structure which may use two or more materials.

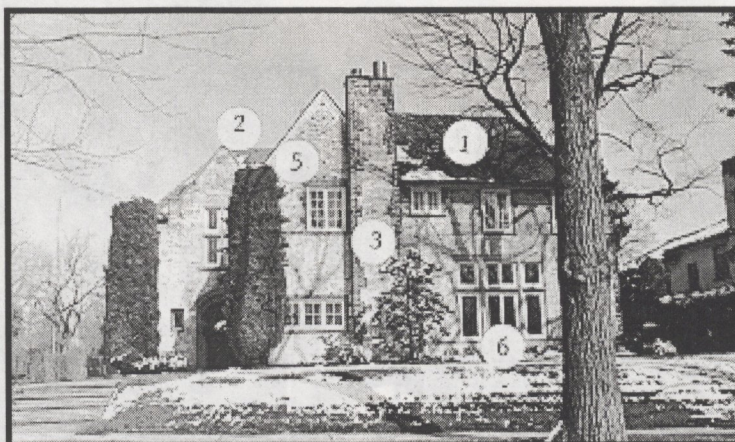
### Common elements:

1. steeply pitched roof
2. intersecting gables or dormers
3. front facade chimney
4. arched entrance
5. casement windows  
heavy mullions
6. half-timbering
7. decorative brickwork
8. diagonally set chimney  
stacks

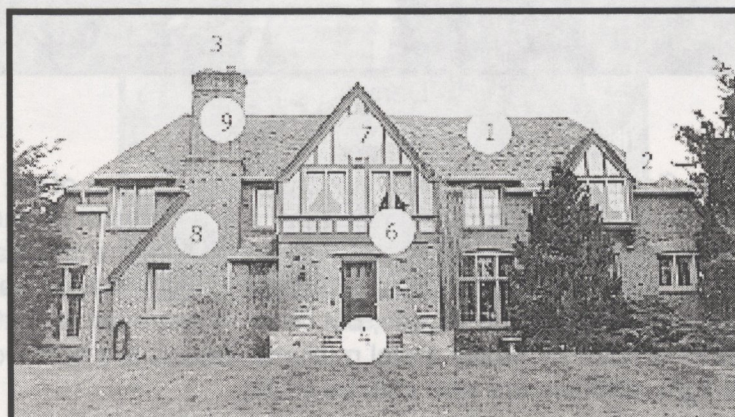


Denver

Jacobean / Elizabethan



Denver

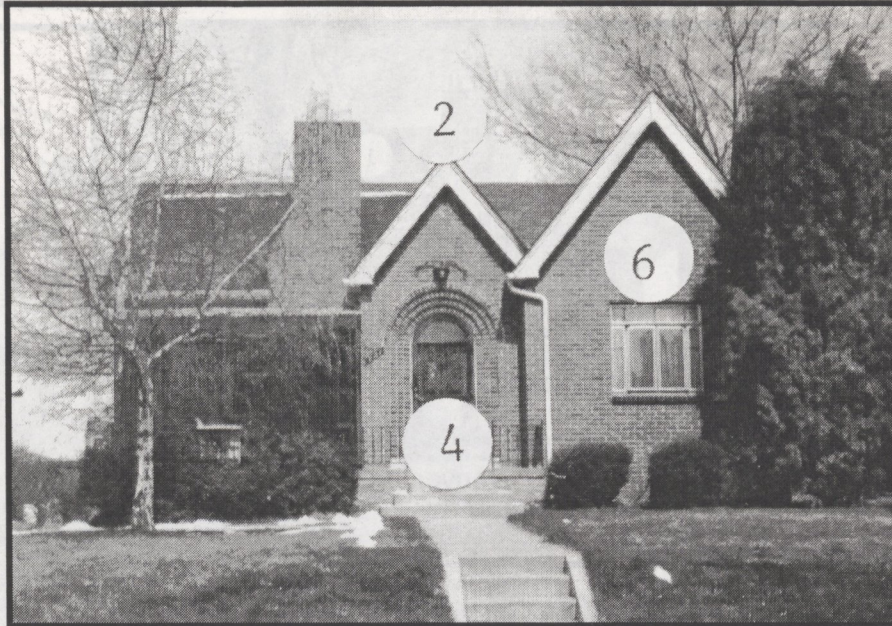


Denver



Fort Collins

## English - Norman Cottage



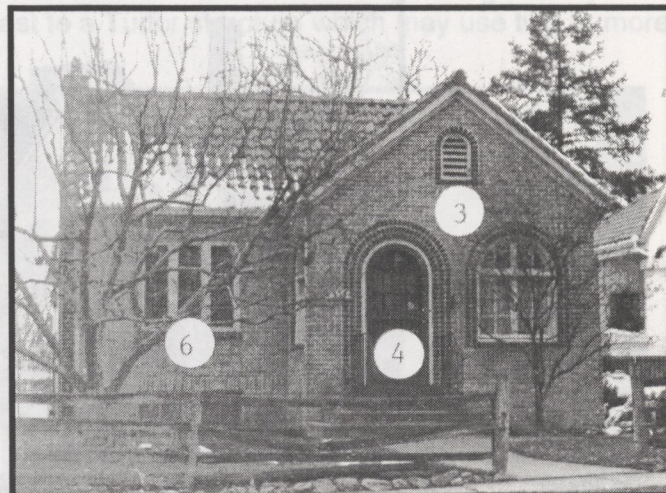
Denver

The English or Norman Cottage is the modest, very simplified version of the Tudor or Jacobean/Elizabethan styles of residential architecture. It is a one-story structure generally composed of brick, stucco or occasionally stone. The most distinguishing feature is the steeply pitched roof and steeply pitched projecting front entrance. Many cottages have arched or straight-headed picture windows on the facade, but other fenestration is limited. Windows are occasionally casements divided by heavy metal mullions. Decorative brickwork, arched entrances, and multi-light windows are also characteristic.

Popular during the 1920s and 1930s, these small one-story homes were considered an alternative to the Bungalow.

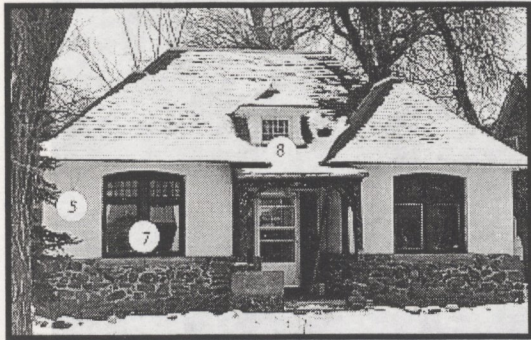
### Common elements:

1. steeply pitched roof
2. steeply pitched gable entrance
3. decorative brickwork
4. arched entrance
5. stucco exterior
6. casement windows
7. large front picture window
8. multi-light windows

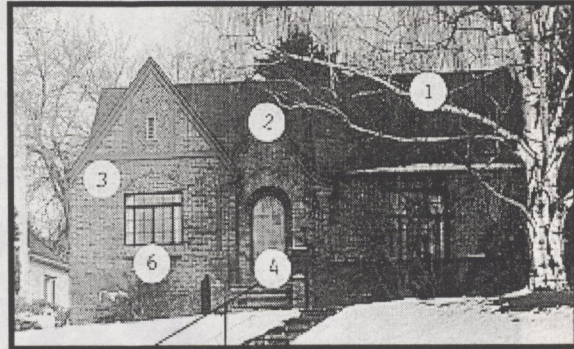


Denver

English - Norman Cottage



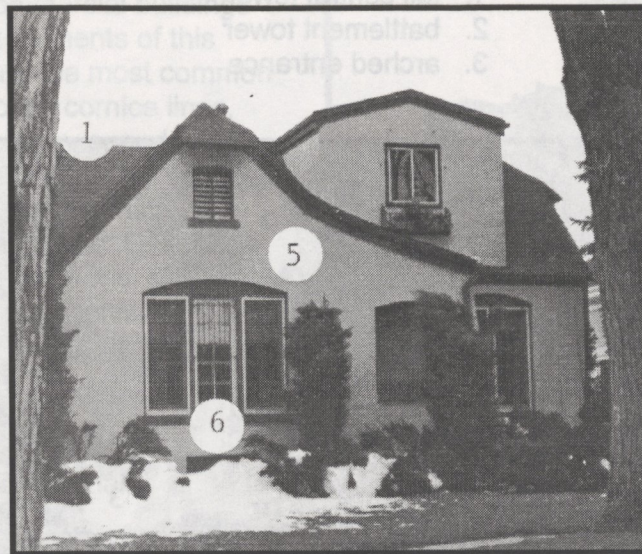
Denver



Denver



Denver



Denver

## Collegiate Gothic

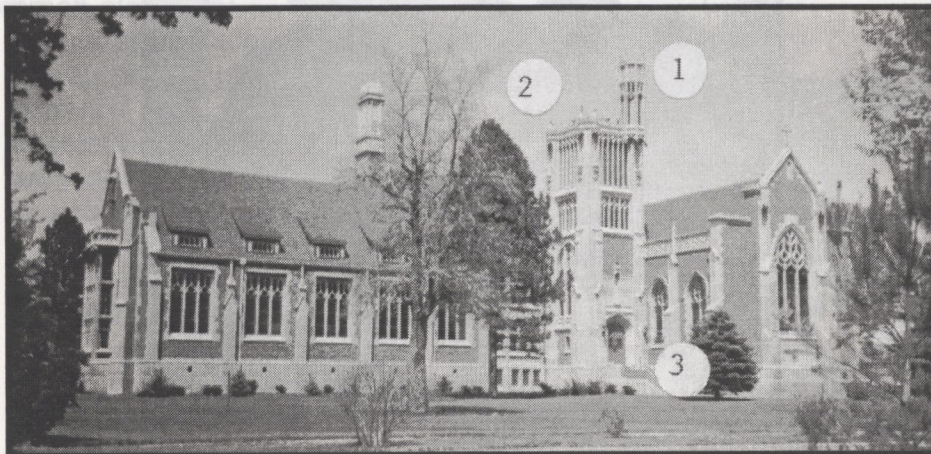


Denver

Collegiate Gothic is most evident on large institutional and educational buildings around Colorado. It combines elements of the Gothic Revival style with the Jacobean/Elizabethan Style. It is characterized by monumental proportions, battlement towers, tall central tower, arched entrances, and abundant multi-light window openings.

### Common elements:

1. tall central tower
2. battlement tower
3. arched entrance



Cañon City



Denver

Art Deco is characterized by an angular, linear composition, stepped or set-back facade, and polychromatic materials. Popular during the 1930s and 1940s, apartment buildings, school, and commercial buildings all over Colorado exhibit elements of this style. Geometric forms are the most common stylistic expressions. Broken cornice lines, low relief geometrical designs, spandrel panels, architectural sculptures, polychromatic materials and a vertical emphasis are also characteristic. Decorative facade elements include chevrons, zigzags, stylized floral and geometric motifs.

**Common elements:**

1. linear composition
2. polychromatic material
3. stepped fronts
4. broken cornice line
5. geometric forms



Denver

## International

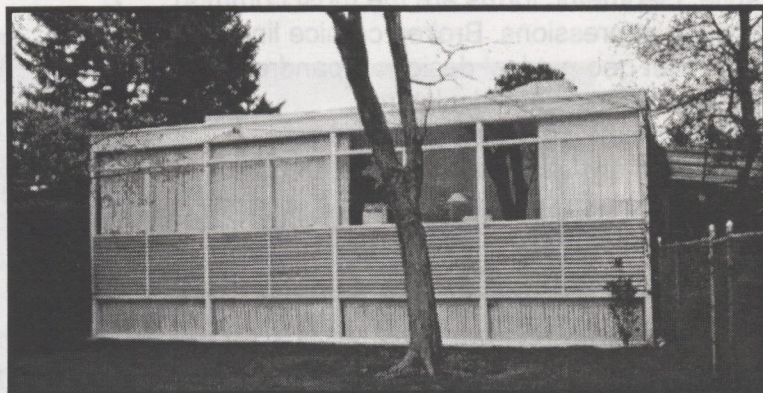


Denver

The chief characteristics of the International style are smooth unornamented surfaces, flat roofs, usually without a ledge or coping, bands of windows, often set flush with the exterior wall, and asymmetrical composition. A complete lack of ornamentation distinguishes the International style. Horizontality, particularly on commercial buildings, is employed through alternating bands of windows and solid planes created a horizontal effect. Wood or metal casement windows are common. The style, which dates primarily from the 1930s through the 1950s; with a revival in the 1970s, also emphasizes light and shadow as opposed to color.

### Common elements:

1. smooth, untextured surfaces
2. cantilevers
3. bands of windows
4. solid plane
5. casement windows
6. flat roof



Denver



Denver



Denver

## Rustic

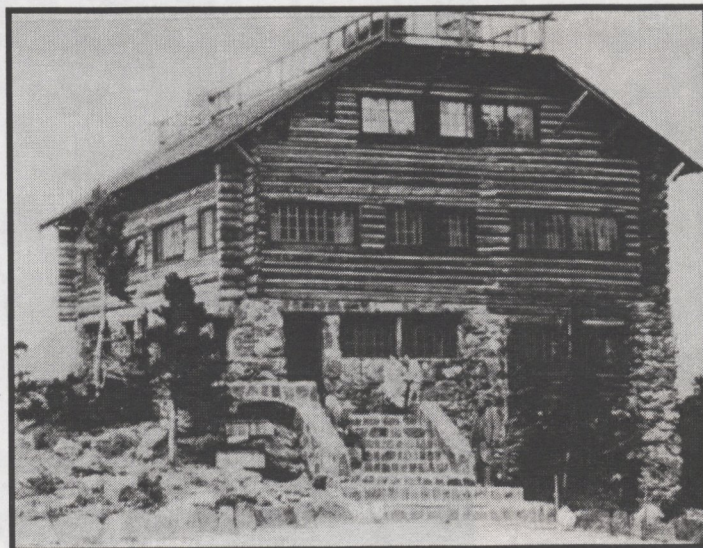


Rocky Mountain National Park

Rustic style architecture is characterized by its natural setting and its use of log and stone for building materials. Designed to blend in with the natural environment, these structures are usually vacation homes, hunting lodges, dude ranches, or tourist-related facilities.

Traditional building techniques emphasizing hand craftsmanship were often employed in the construction of Rustic structures. The majority of these structures in Colorado were built after 1905 and are primarily of log construction with stone foundations, battered walls, overhanging roofs, and small paned windows.

Rustic style cabins differ from Pioneer Log structures which were generally built during initial settlement periods and often exhibited crude construction. Rustic cabins generally have stone chimneys while Pioneer Log cabins utilized metal flues attached to iron stoves. Rustic buildings have more commercially manufactured hardware and materials, such as window frames, doors, and interior paneling. Rustic buildings may also employ hip roofs, a form virtually never found on Pioneer Log structures.



Estes Park, circa 1921

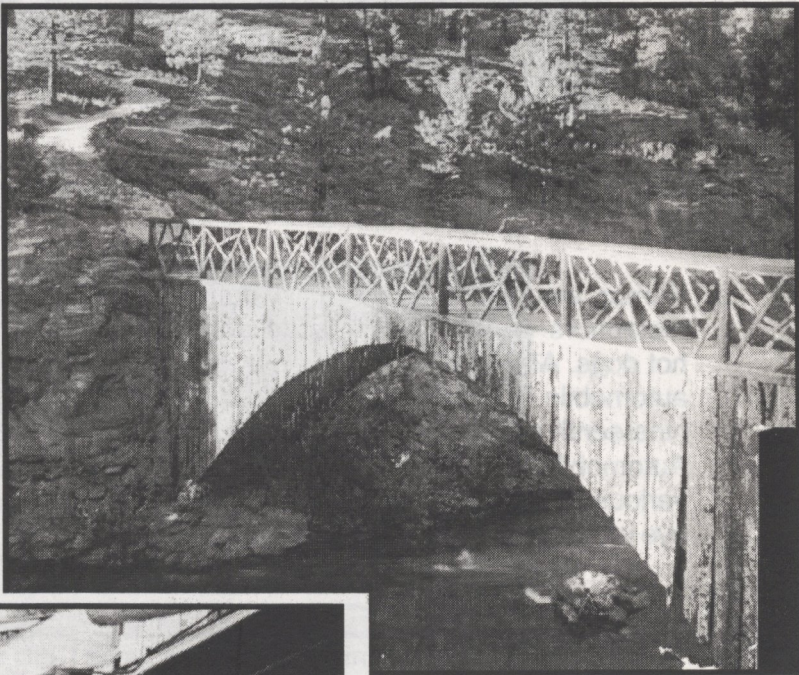
**Rustic**



Interior, Estes Park

**Common elements:**

- 1. log construction
- 2. stone foundation
- 3. small paned windows
- 4. overhanging roof
- 5. stone chimney
- 6. battered walls



Rustic bridge near Evergreen  
Circa 1930



Estes Park

## Novelty

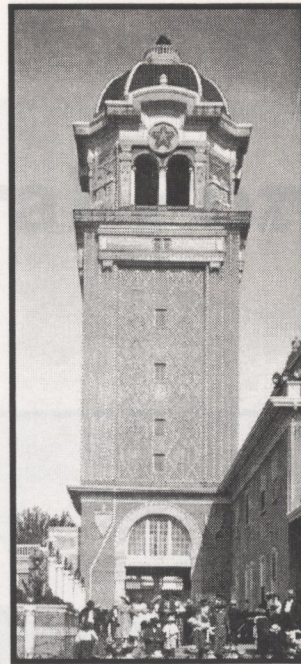


Conifer

Humor, amusement and whimsy define Novelty architecture. One aspect of the style utilizes metaphors—refreshment stands look like large milk bottles and fast food stands resemble giant hot dogs. Although not common in Colorado, early examples reflect the beginnings of the automobile culture in the 1920s and 1930s. The development of amusement parks in the late nineteenth and early twentieth centuries often manifested itself in Novelty architecture. Automobile tourism fostered an associated roadside industry of gas stations, diners, motels and various attractions “not to be missed.” Proprietors employed Novelty architecture to catch the eye of passing motorists.



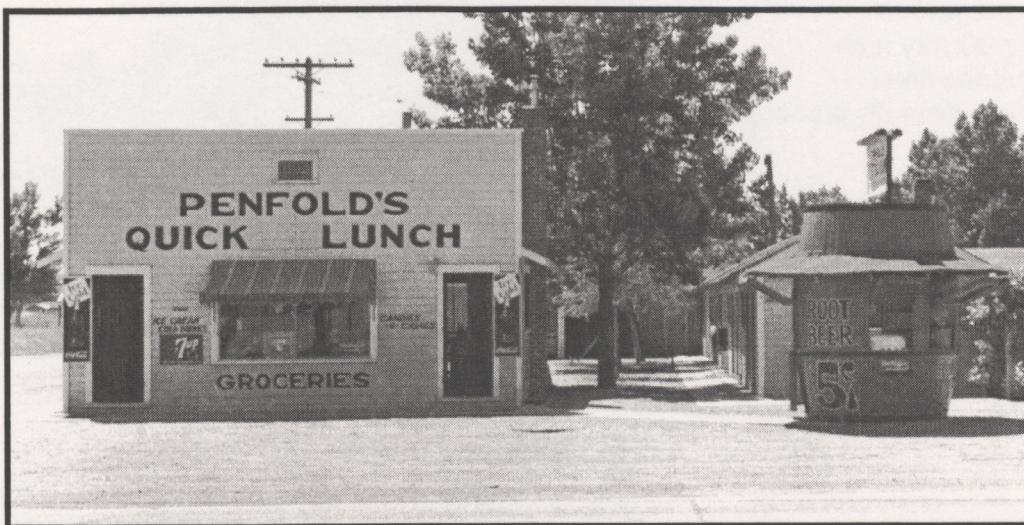
Genoa, circa 1935



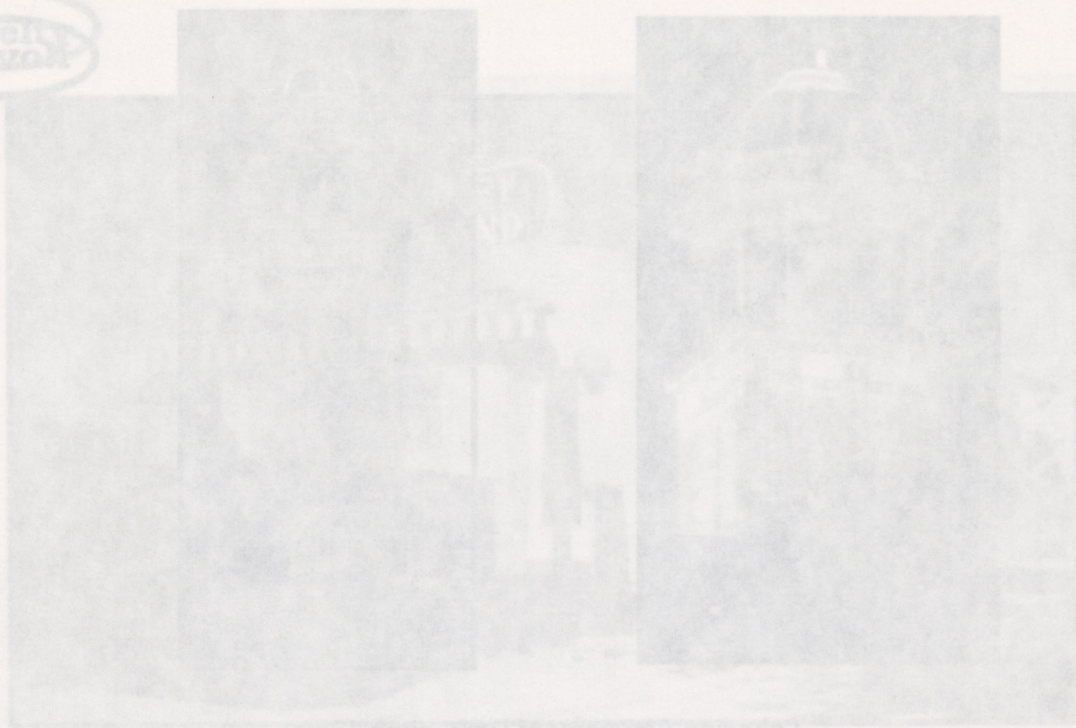
Lakeside Amusement Park, circa 1920



Souvenirs and gasoline in the Big Thompson Canyon, circa 1940



Lunch and root beer from a giant barrel in Fort Morgan, circa 1935



Government and Justice in the Big Thompson Canyon, circa 1940

Humor, amuse-  
metaphors—  
hot dogs. All  
automobile  
nineteenth  
Automobile  
various attra  
eye of passen



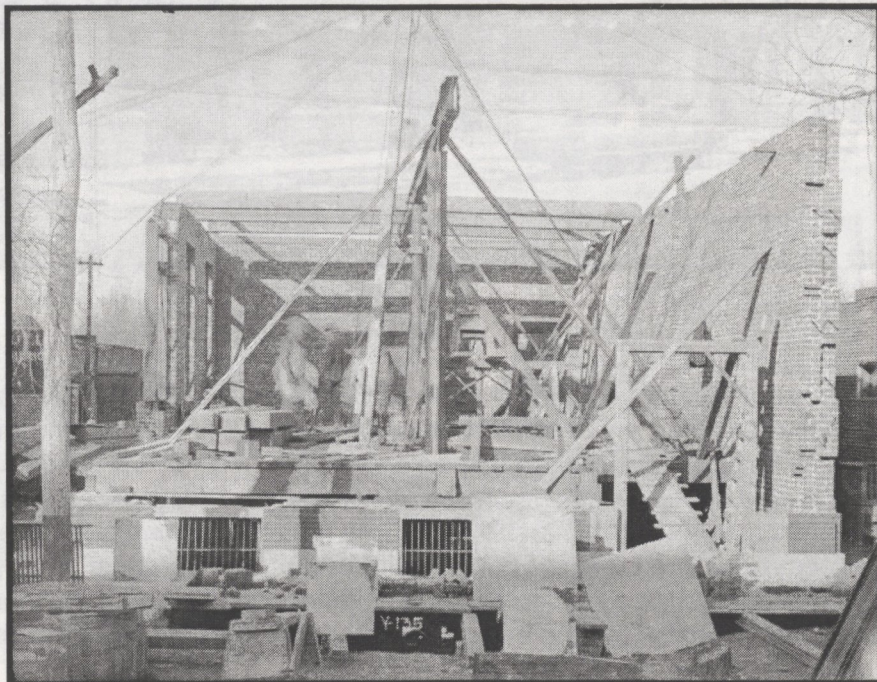
Government and Justice in the Big Thompson Canyon, circa 1940

izes  
e giant  
iale  
eis and  
n the



Lunch and root beer from a giant barrel in Fort Morgan, circa 1935

# Architectural Forms



Telephone Building under construction, Colorado Springs (1897)

## Terrace



Denver

The Terrace form is not commonly found outside of Colorado. It dates from the late 1880s through 1920. These buildings are basically one or two story brick structures with flat roofs and corbeled cornices. The style is evident in a few single-family houses, but predominantly as duplexes, triplexes, and multiple unit complexes. All have outside entrances along the facade. Many have individual porches at each entrance. While the most common cornice treatments are brick corbelling, occasionally a separate cornice with brackets or parapets at the roofline are evident. Stylistic elements such as Richardsonian Romanesque arches or Italianate bracketed cornices are used occasionally, but the basic flat-roofed, rectangular form predominates.

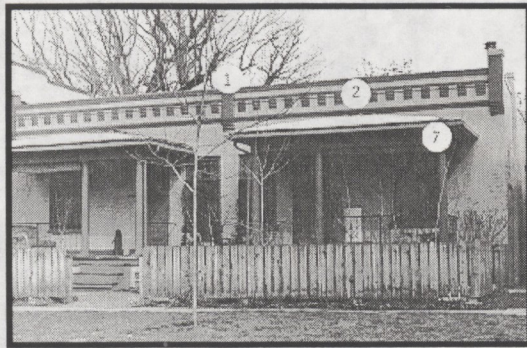
### Common elements:

1. flat roof
2. corbelling
3. parapet
4. masonry arch
5. stone lintel
6. segmentally arched window
7. porch

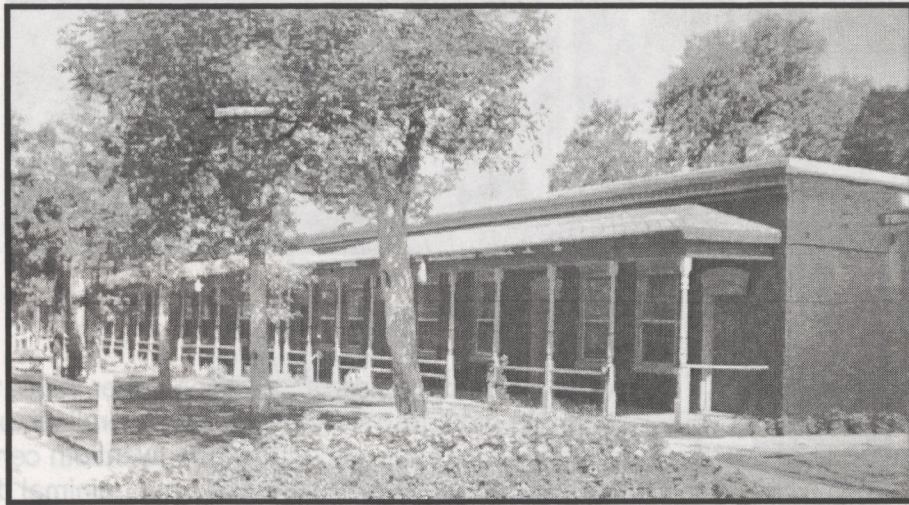


Denver

Terrace



Denver



Colorado Springs



Denver

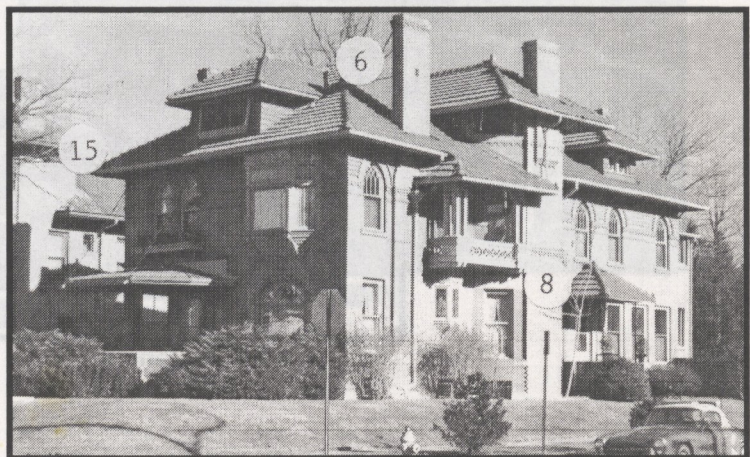
## Foursquare



A "textbook" Foursquare

One of the most commonly found forms in Colorado residential buildings after 1900, the Foursquare is easily recognized by its square plan, two-story height and overall simplicity. The majority of these houses were built during the first three decades of the twentieth century. The typical Foursquare is a two-story hipped roof structure with central dormer, minimal decoration, broad overhanging eaves with brackets or modillions, classical frieze with dentils, and a porch, usually full-width with a hipped roof supported by Doric or Tuscan columns or by square posts. Occasionally, a Foursquare will feature a shaped gable or will be considerably larger with more elaborate ornamentation. In each case, the basic square plan is predominant.

The Foursquare is a basic residential form adaptable to many stylistic treatments. Classical, Mission and Mediterranean elements may all be found on Foursquare residences.



Large and elegant Foursquare



Denver



Denver

**Common elements:**

1. residential
2. square plan
3. front porch
4. two or more stories
5. unadorned exterior
6. hipped roof
7. shaped gable
8. side bays
9. Doric or Tuscan columns
10. brackets
11. square porch posts
12. dentils
13. classical frieze
14. modillions
15. roof overhang



Denver

## Classic Cottage



Denver

The Classic Cottage is basically a one-story version of the Foursquare. It features an elongated hipped roof with central dormer, and front porch, often full-width, with thick porch posts or simplified Doric columns supporting the porch roof. Sometimes the porch is inset beneath the house roof. Popular between 1910 and 1930, the style was most commonly used in residential architecture, although occasionally seen on schoolhouses, train depots, or small institutional buildings. Building materials were almost always masonry, particularly brick, with a few rare wood frame examples. Ornamentation is generally limited to window surrounds and flared eaves on the dormer.

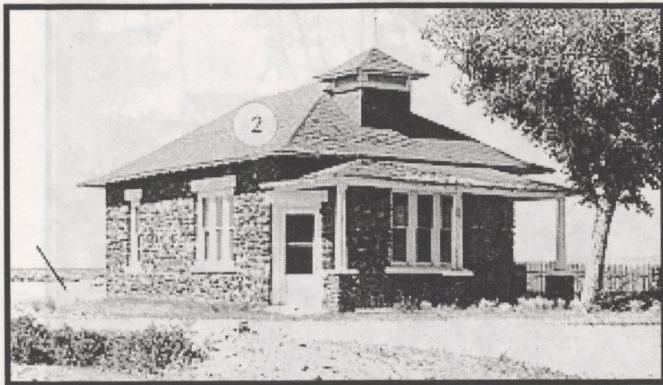
### Common characteristics:

1. central dormer
2. hipped roof
3. thick porch posts
4. flared eaves
5. simplified Doric columns
6. belt course



Denver

**Classic Cottage**



Bank building using the Classic Cottage form in Jaroso



Denver



One-and-one-half story Classic Cottage in Boulder

which characterized the Arts and Crafts  
 tion. As the most common expression  
 spread quickly across the country  
 architecture was popular from 1880 to  
 town statewide.

clapboard wood or masonry structure  
 ing eaves, broad porches, and simple  
 horizontal lines. An additional gable occasionally covers an open porch and the overhang is  
 usually supported by battered porch piers or thick columns. Some bungalows have clipped  
 gables, shed dormers, or exposed rafter ends, but almost all have a front porch.

Common elements:

- 1. front gable roof
- 2. side gable
- 3. exposed rafter ends
- 4. large front porch with piers
- 5. pent-roofed bay
- 6. clipped gable
- 7. overhanging eaves

## Bungalow



Denver

Following closely the philosophy of utility and simplicity which characterized the Arts and Crafts movement, the Bungalow became its physical manifestation. As the most common expression of Craftsman style architecture, the residential Bungalow spread quickly across the country during the early 20th century. In Colorado, this type of architecture was popular from 1900 to around 1930 and is evident in practically every city and town statewide.

The typical Bungalow is a one or one-and-one-half story, clapboard wood or masonry structure with a gently pitched, front or side gable roof, overhanging eaves, broad porches, and simple horizontal lines. An additional gable occasionally covers an open porch and the overhang is usually supported by battered porch piers or thick columns. Some Bungalows have clipped gables, shed dormers, or exposed rafter ends, but almost all have a front porch.

While the vast majority of Bungalows incorporate the Craftsman style, examples may be found in Mission, Pueblo Revival and Mediterranean styles.

### Common elements:

1. front gable roof
2. side gable
3. exposed rafter ends
4. large front porch with battered piers
5. pent-roofed bay
6. clipped gable
7. overhanging eaves



Denver

**Bungalow**



Denver



Denver



Mission style Bungalow in Crook

## A-Frame



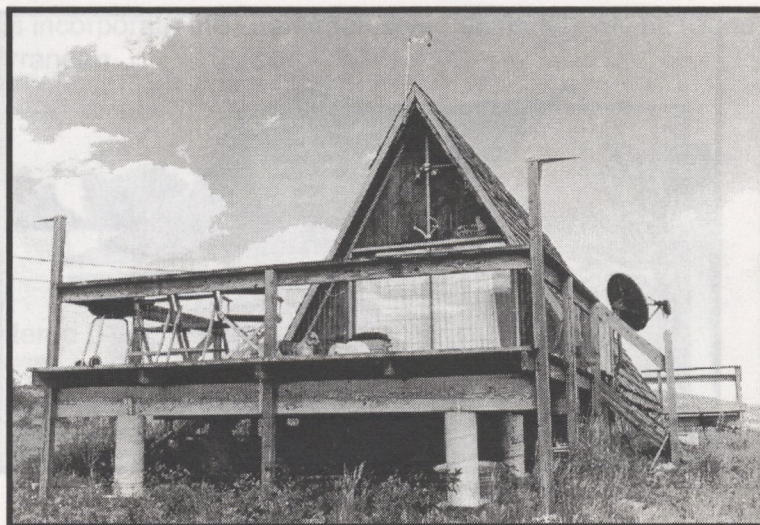
Pitkin

The A-Frame form achieved popularity in the 1960s as vacation homes, ski huts, and other simple residential buildings. The form is defined by the steeply pitched gable roof whose eaves extend to grade. The roof forms the walls on the two side elevations. The interior is generally an open plan with living, dining and kitchen facilities on the lower level and a sleeping loft above. A gable balcony off the loft is common. Occasionally, dormers may be used to increase loft space and illumination. The simplicity of the form facilitated the production of A-Frames as kit structures.

A-Frames are widely distributed across Colorado, though more commonly found in the mountains and in recreational communities. While predominately residential, the form is occasionally found in commercial and retail facilities.

### Common elements:

1. steeply pitched front gable roof
2. roof eaves extend to grade
3. rectangular plan



Cripple Creek



Though not a true A-Frame, this house in Louviers combines the basic form with gable-roofed side wings.



Fast food restaurant with A-Frame element, Arvada



Side entry on A-Frame restaurant, Manitou Springs

## Basement House

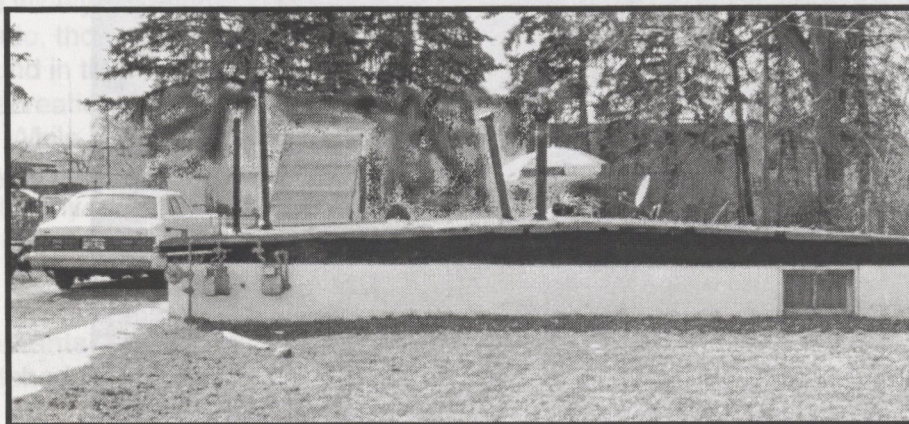


The basement or half-house dates predominantly from the period immediately after World War II. The residences were promoted as affordable housing for returning veterans. The roof supports were designed as sub-floors so that a second or main level could be built as funds permitted. Most basement houses were later finished as one or two-story houses, or were demolished to permit the construction of a more conventional house. Unaltered surviving examples are very rare.

Basement houses are characterized by their raised basement configuration, rectangular plan, at-grade stairway entrance, and flat or gently pitched gable roof. Most basement houses were constructed of concrete although some were built using concrete blocks below grade and stucco, brick or even wood siding above grade.

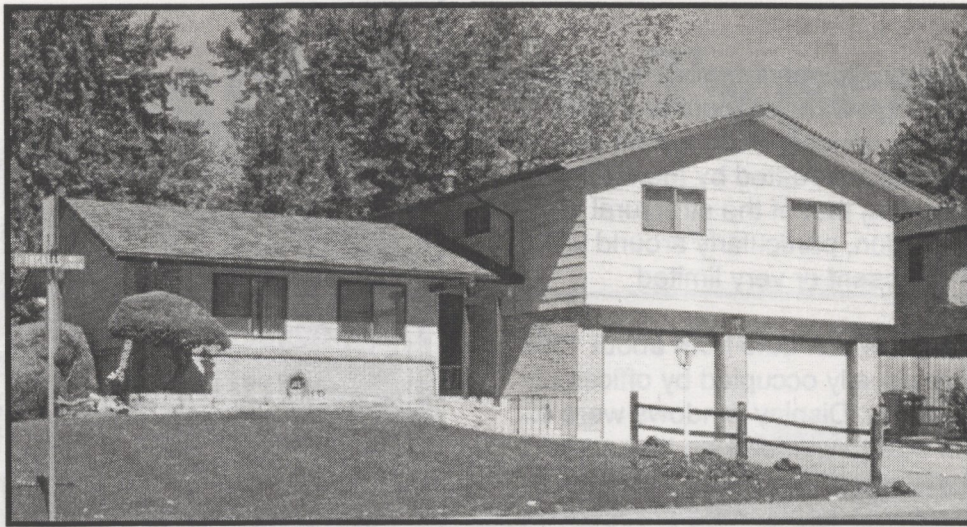
### Common elements:

1. majority of building below grade
2. flat or gently pitched gable roof
3. concrete construction
4. at-grade entry to stairwell



Arvada

## Split-Level



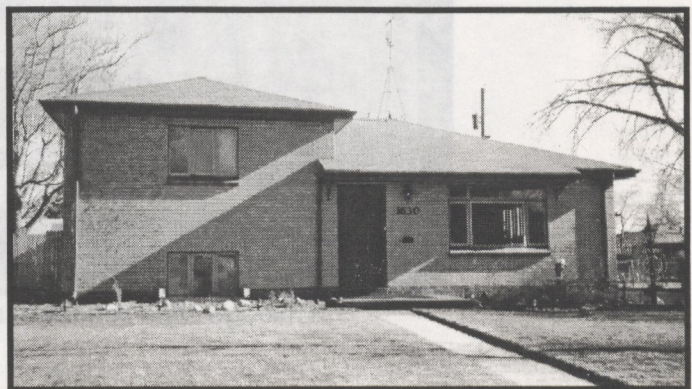
Denver

Often referred to as a tri-level, a split-level is more of a building type than a style. Developed in the 1930s, it emerged in the 1950s as a multi-story counterpart to the dominant one-story Ranch house. Retaining the low pitched roof, overhanging eaves and horizontal lines of the Ranch, these homes added a two-story unit connected at mid-height to a one story section creating three staggered floor levels. This bifurcated floor layout reflected an interior planning theory that determined families needed three types of interior space: a noisy living and service area on the partially below grade level (represented by a family room and often a garage); the mid-level quiet living area (containing the living room, dining room and kitchen); and the upper level with the bedrooms.

A variety of wall cladding is used, such as brick and clapboard, and is often mixed with the brick relegated to the lower level. Attached garages, often partially below grade, are more characteristic of later construction. Windows typically include a picture window. There may be some traditional detailing, such as decorative shutters, but their unusual form clearly identifies them as modern houses. This postwar suburban house type remained popular through the 1970s. Although its heyday lasted about 25 years, new examples of split levels can be found today, attesting to the durable appeal of the design.

### Common elements:

1. two-story section connected at mid-height to one-story "wing"
2. low-pitched roof
3. overhanging eaves
4. horizontal lines
5. attached garages on the lowest level and often below grade



Denver

## Early High Rise

Early High Rise buildings are generally six to twenty stories high with flat roofs and often have projecting cornices. Most exhibit a skeletal appearance created by the total area of glass exceeding that of the structural material. Ornamentation, particularly around windows is either absent or very limited.

These buildings, which date from about 1890 to 1920, were usually occupied by offices or department stores. Display windows were often similar in size to windows on the upper floors, unlike nineteenth century buildings which featured storefronts that were predominately glass on the ground floor and small windows on the upper floors. The "Chicago Window" was commonly employed on Early High Rise/Commercial style buildings, as well as some twentieth century commercial buildings. This type of window was a large fixed central pane flanked by two narrow case-ments.



Denver



Chicago style windows in Denver circa 1930

# Special Use Types



James Services Station, Colorado Springs (ca. 1940)

Most nineteenth-century commercial buildings are two or three stories in height, with a flat roof and a variety of window styles. The "textbook" storefront has a recessed central entrance flanked by pilasters, window and door transoms. The primary or secondary window is usually topped with a pediment, finial, or simple decorative panels. There is sometimes a secondary window above the first two stories, which sometimes repeat the pattern of the primary window. On the upper stories are generally smaller than the primary windows, and are usually decorated with molded surrounds, radiating patterns, or other decorative elements.

Some of the most distinctive features of early commercial structures feature cast iron facades. These had a variety of decorative elements, particularly at the cornice. Richardsonian elements are also evident on some of these structures. The key to distinguishing a nineteenth-century building is the predominantly glass storefront and smaller windows on the upper stories. These buildings are usually retail, offices, and hotel space.

## Nineteen-Century Commercial



Double storefront in Salida

Most nineteenth-century commercial structures are usually considered Italianate in style. However, many buildings contain a variety of detailing not associated with Italianate. These commercial buildings have been divided into four categories: the single storefront, generally twenty-five-feet wide with one entrance; the double storefront, with a width of fifty feet or more and two or three entrances; the corner building which may have entrances on two sides and sometimes a diagonal corner entrance; and the commercial block which generally covers a large area with multiple entrances.

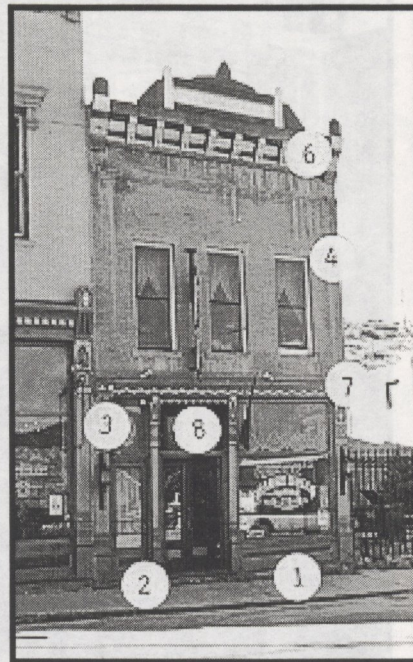
Most nineteenth-century commercial buildings are two or three stories in height, with a flat roof and a variety of ornamental detailing. The "textbook" storefront has a recessed central entrance flanked by large display windows with kickplates, window and door transoms. The primary or roofline cornice is often bracketed with parapets, finials, or simple decorative panels. There is sometimes a secondary cornice separating the first two stories, which sometimes repeat the pattern of the upper cornice. Windows on the upper stories are generally smaller than the display windows on the street level and are usually decorated with molded surrounds, radiating voussoirs, or plain stone lintels.

Some of the most ornate nineteenth-century commercial structures feature cast iron facades. These had Italianate features particularly at the cornice. Richardsonian elements are also evident on some of these structures. The key to distinguishing a nineteenth-century building is the predominately glass storefront and smaller windows on the upper stories. These buildings are usually retail, offices, and hotel space.

## Nineteenth-Century Commercial

**Common elements:**

1. cast iron facade
2. kickplate
3. window transom
4. lintel
5. radiating voussoirs
6. bracketed cornice
7. secondary cornice
8. door transom
9. recessed entry



Leadville



Central City

## Early Twentieth-Century Commercial



Limon

Early Twentieth-Century Commercial structures are generally one to five stories, with flat or slightly pitched roofs. Often constructed of blond or light colored brick, these buildings have very little ornamentation other than some decorative brickwork along the cornice or parapet. In some of the smaller towns, 20th century commercial structures retain some elements of 19th century commercial structures.

The clear glass transoms of the nineteenth century has largely been replaced by translucent prismatic glass. Some storefront entrances of this period are flush with the facade. Others, particularly in retail establishments, feature deep, nearly facade-wide recesses that allow shoppers to examine window displays out of the sidewalk traffic.

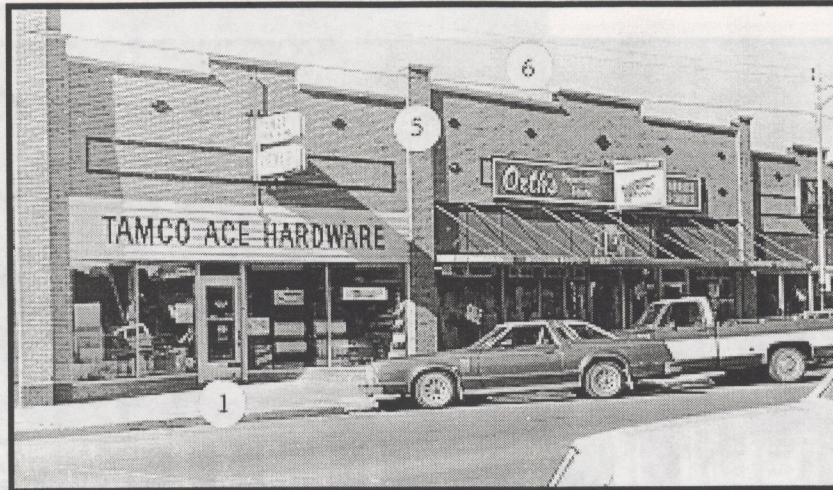
### Common elements:

1. recessed or flush entrance
2. translucent window transom
3. door transom
4. corbelled cornice
5. decorative brickwork
6. parapet



Elbert

## Early Twentieth-Century Commercial



Burlington



Deeply recessed entry, Denver, 1928



Storefront with translucent transom in Denver, 1937

## House with Commercial Addition



A corner commercial addition wraps around a Victorian-era house on East 6<sup>th</sup> Avenue in Denver

When major residential streets become heavy with automobile traffic, development pressure may result in the transformation of these corridors into commercial strips. Such development most often cause the demolition of the existing housing stock. However, in some cases, the housing is adapted to meet commercial and retail needs through the construction of commercial storefront additions. The additions, usually on the facade, front the street edge. The storefronts generally resemble most of the other commercial buildings along the street. The additions tend to be one-story in height, although examples of two or more stores are occasionally found. Multi-story additions may totally obscure the original house facade.

The owner/proprietor of the storefront business almost always lived in the house, at least at the time of the commercial construction.

Over time, some or all of the residential space may have been converted to retail or other commercial uses.

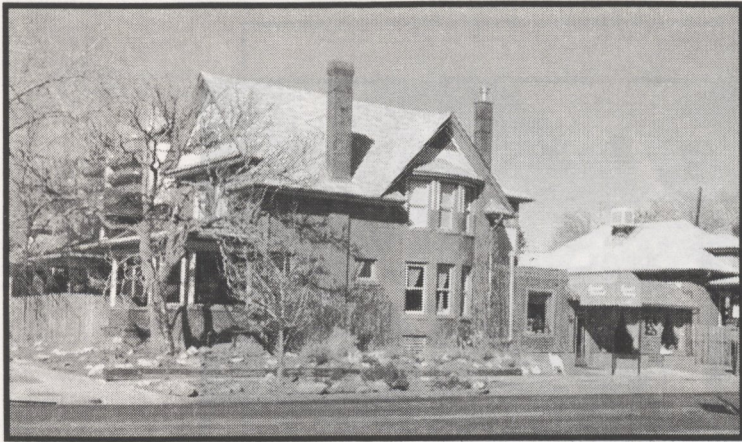
### Common elements:

1. commercial addition directly abuts original house
2. addition may be to facade or side elevation, or may wrap around two elevations.
3. majority of house retains its physical integrity
4. commercial space is accessed by its own entry



Small storefront addition on a Foursquare residence on E. Colfax in Denver

**House with Commercial Addition**



An unusual rear commercial addition in Denver



An E. Colfax restaurant addition in Denver almost completely hides the original house



A triple-storefront addition of mid-twentieth century vintage fills multiple lots in front of a Queen Anne style house

## House with Canopy Gas Station



Dailey

The house with canopy became the most prevalent form of gas station in the 1910s and 1920s. The small square or rectangular plan office building is topped by a hipped or front gable roof that extends over the automobile driveway. The roof is supported by a single centered column, or more commonly, by a pair of corner posts. The house, or office, may be brick, stucco or wood sided. In some cases, the office and canopy may be flat-roofed with a parapet on all but the rear elevation. In the case of corner stations, the building often sits diagonally on its lot fronting the street intersection. Some corner gas stations have two canopies, extending in an L-plan over two intersecting driveways.

### Common elements:

1. small square or rectangular plan office
2. office roof extends over automobile driveway
3. roof supported by paired corner or single center post
4. building fronts street or street intersection



Double-canopy station in Denver

## Cottage Gas Station



Lamar

The Cottage type station represents efforts by gasoline companies to build stations compatible with residential neighborhoods. The stations featured steeply pitched side-gabled roofs, gabled entries, multi-light office windows, and sometimes even massive chimneys, though strictly as non-functioning decoration. Cottage stations were built in large numbers all across Colorado in the 1920s.

Later Cottage stations often featured free-standing automobile service buildings, or had attached service bays in the character of a house and garage.

Tudor stylistic elements graced some Cottage stations. Half-timbering filled the gables.

### Common elements:

1. small square or rectangular plan office
2. steeply pitched side-gabled roof
3. gable sheltered entry
4. multi-light office windows



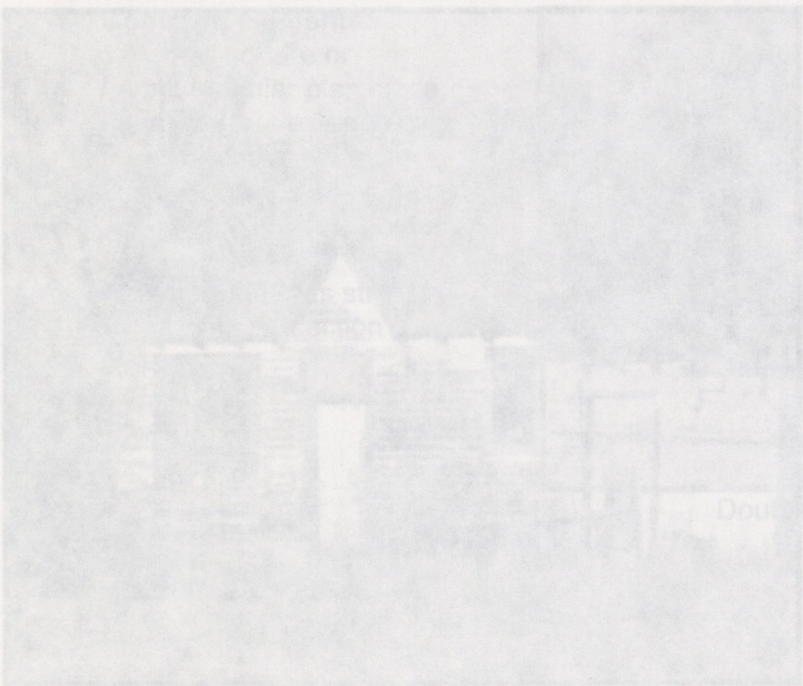
Abandoned Cottage-type station in Seibert

**Gas Station**



1910s

The house with canopy became the most prevalent form of gas station in the 1910s and 1920s. The Cottage type station, a small one-story building with a gabled roof and a central entrance, was often built on a corner lot. Some of these stations were built with a canopy over the entrance. In the case of corner stations, the building often sits on its lot in an L-plan over two lots. Some corner gas stations have two canopies, extending in an L-plan over two lots. Later Cottage stations often featured free-standing automobile service bays in the character of a house and garage.



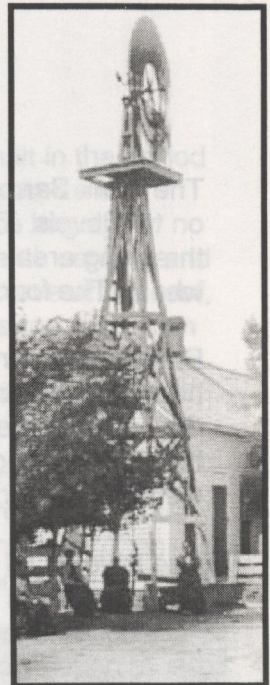
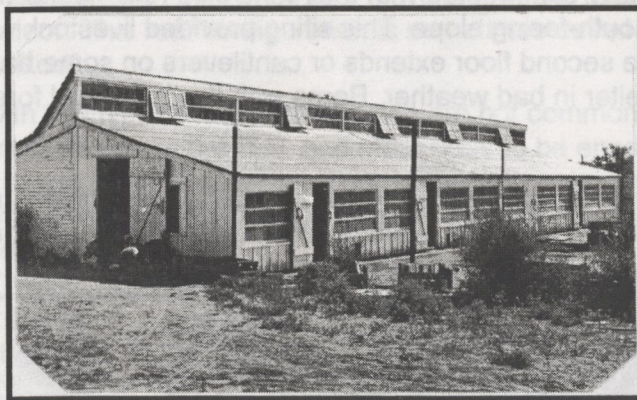
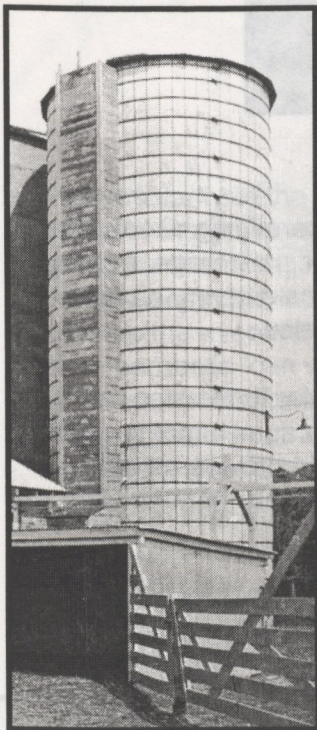
Double-canopy station in Denver

Abandoned Cottage-type station in Seiber

Tudor stylistic elements graced some Cottage stations. Half-timbering filled the spaces

multi-paned windows

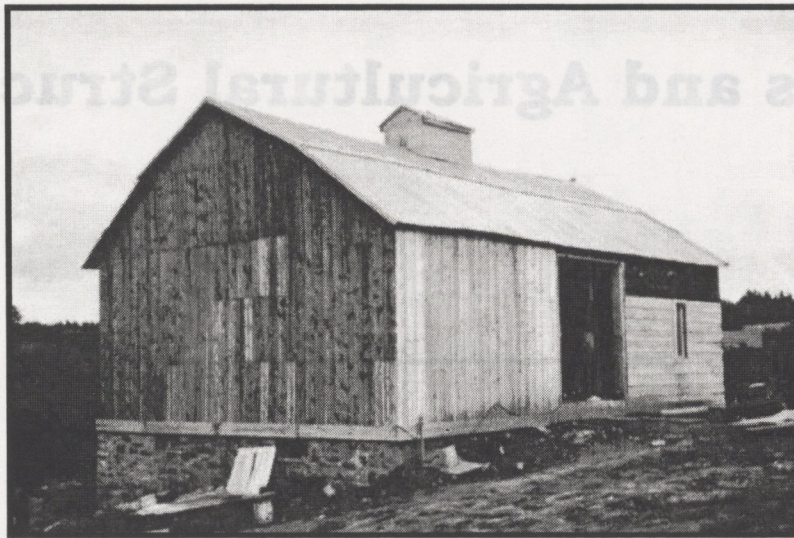
# Barns and Agricultural Structures



All photos from Western History/Genealogy Department, Denver Public Library

For information on additional barn and agricultural structure types, see Allen G. Noble and Richard K. Cleek, *The Old Barn Book: A Field Guide to North American Barns and Other Farm Structures*, (New Brunswick, NJ: Rutgers University Press, 1995). Additional information may also be found in "Historic Ranching Resources of South Park, Colorado," a National Register Multiple Property Documentation Form by Laurie and Thomas Simmons, and *The Mountain West: Interpreting the Folk Landscape* Terry G. Jordan, Jon T. Kilpinen and Charles F. Gritzner.

## Bank Barn



Beulah

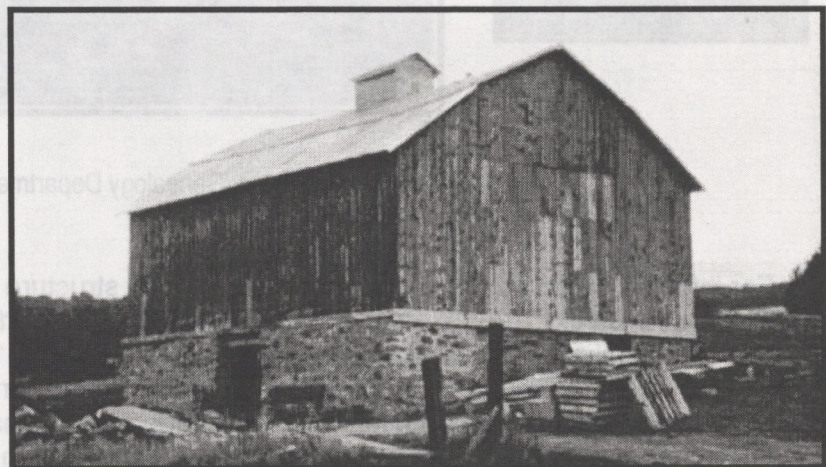
The Bank Barn derives its name from being built into the side of hill, thus permitting direct entry on two levels. The lower level houses animals, while the upper level serves as storage and a threshing area. The upper hillside entrance provides easy access to wagons carrying hay or wheat. The fodder can be dropped through floor openings to the stables below.

Bank barns were usually constructed with their long side (axis) perpendicular to the slope of the hill, if possible on a south-facing slope. This siting provided livestock with a sunny spot to gather during the winter. The second floor extends or cantilevers on some barns to provide an overhanging livestock shelter in bad weather. Barns with this extended forebay were popular with German immigrants.

The lower level of Bank Barns is constructed of masonry, older barns using stone or brick and newer versions employing concrete. Vertical slits or other gaps are sometimes found in the side walls for ventilation as well as decoration. Rooftop ventilators are also common as is gapped vertical siding. Curing hay can generate enough heat to spur spontaneous combustion. Poorly ventilated barns full of hay occasionally burst into flames.

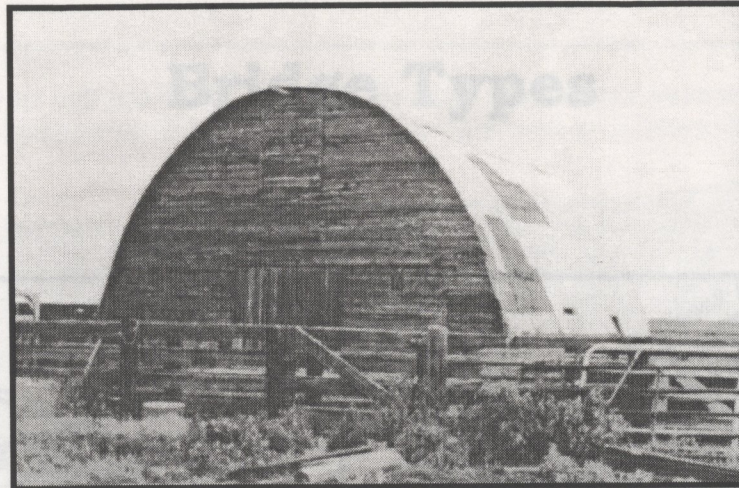
### Common elements:

1. built into hillside
2. two level entry
3. masonry lower level



Beulah

## Round-Roof Barn



Morino

The popularity of the Round-Roof barn dates from the 1920s, with most being built in the period between the world wars. The Round-Roof barn design came from attempts to optimize loft space for the storage of hay. Efforts to increase loft area for the same floor space largely brought about the increasing use of gambrel barn roofs at the end of the nineteenth century and towards the even more efficient round roofs in the early twentieth century. The curve of the roof, often parabolic, can vary widely. The height of the side walls may range from a short extension of the foundation to a full sidewall with the round roof forming only the roof. The eave is often broken by a tall entrance door. This roof configuration is sometimes called Gothic, Gothic-Roof, Arched-Roof, or Rainbow-Roof.

Pre-World War II barns with this type of roof configuration are not common in Colorado. They are widely and thinly distributed across the U.S. and most likely to be encountered in the Midwest, especially in areas of late settlement such as northern Wisconsin. They are most often found in dairying areas where the increased hay storage of a round roof is advantageous. The Round-Roof is considered to be a barn type, but many different barn types have been roofed or re-roofed, with round roofs of laminated rafters.

Round-Roof barns without side-walls became increasingly common after 1945, imitating the design of the popular World War II Quonset Hut.

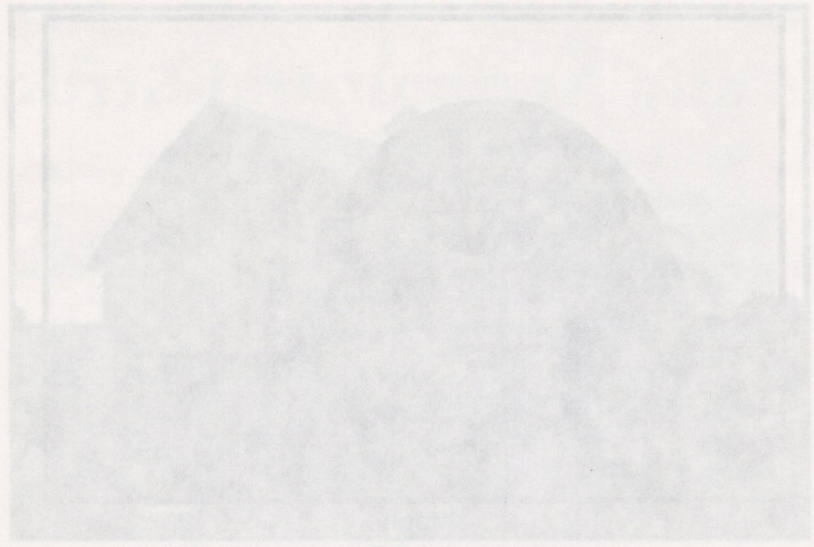
### Common elements:

1. semicircular or parabolic roof
2. laminated wood or metal rafters.



Interior Rafters of a Round-Roof Barn

**Round-Roof Barn**

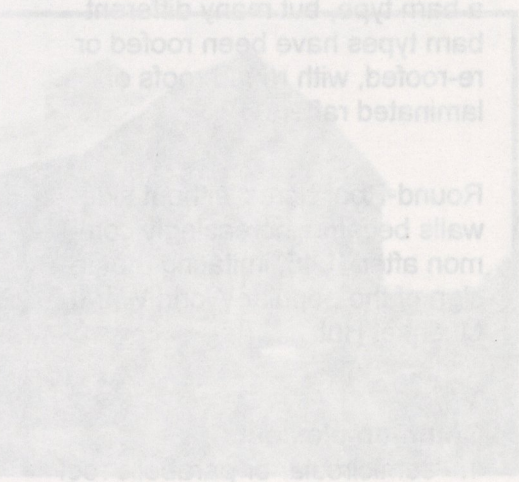


Beulah

The popularity of the Round-Roof barn dates from the 1920s, with most being built in the period between the world wars. The Round-Roof barn design came from America to Europe for the space for the storage of hay, which is a very large space. The Round-Roof barn is a type of barn that is built with a rounded roof, and it is often used for the storage of hay. The Round-Roof barn is a type of barn that is built with a rounded roof, and it is often used for the storage of hay. The Round-Roof barn is a type of barn that is built with a rounded roof, and it is often used for the storage of hay.

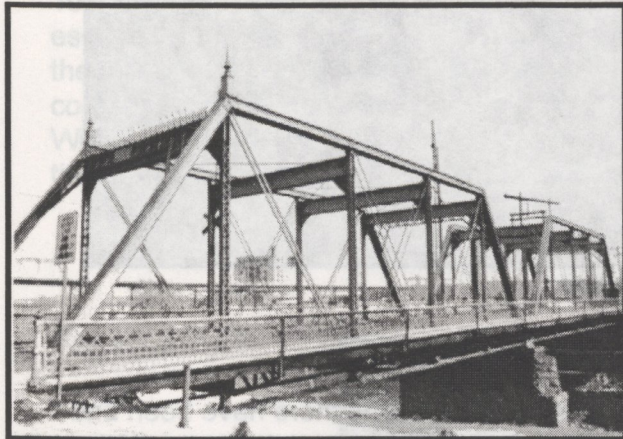


Interior Rafters of a Round-Roof Barn



2. Laminated wood or metal ribs

## Bridge Types



Pratt Truss, Denver



Concrete Arch, Franktown



Steel Stringer, Aspen



Marsh Arch, Fort Morgan

For information on additional bridge types, see Highway Bridges in Colorado, National Register Multiple Property Documentation Form. The document is available from the Office of Archaeology and Historic Preservation or may be viewed online at: [www.coloradohistory-oahp.org](http://www.coloradohistory-oahp.org).

## Timber Stringer Bridges



Huerfano County

Timber has been used for bridge construction in Colorado for as long as there have been bridges. The railroads used timber extensively when building through the mountains in the 19th century, constructing spindly, multiple-span trestles when stream conditions allowed for many pile bent piers, or erecting timber/iron combination trusses when longer spans were required. Bridges built for roadway use followed the same structural principals and took many of the same forms as railroad bridges. Like the railroads, early Colorado vehicular roads made extensive use of timber stringer bridges, and for the same reasons. Early toll-road operators and county road crews typically avoided building bridges when they could, but when they could not, they built as cheaply as possible, and timber pile bridges were the cheapest and most quickly completed structures that could be built in the 19th and early 20th centuries.

During the 1910s the Colorado Highway Commission generally eschewed timber trestles in favor of concrete and steel construction, and the Commission attempted to direct the counties away from timber construction as well. During the Depression, when labor was more plentiful than materials, and during World War II, when strategic materials such as concrete and steel were embargoed by the government, timber was used extensively by the Highway Department for bridge construction. The trend continued into the 1950s, and timber pile bridges continue to be built today, but primarily at secondary locations such as forest roads.

Timber stringers consist of parallel lines of wooden beams laid over the piers and abutments in single- or multiple-span configurations. The substructure is typically timber pile bents, but stone masonry, concrete, steel pile bents, or log cribs were used as well. Like railroad bridges, timber stringer structures for wagon use rarely exceeded 30 feet in length. Those stringer bridges with longer spans were sometimes reinforced with metal tension rods attached under the beams to form what were called "jack trusses." The decks and guardrails of timber trestles were almost always made up of wooden members.

The primary difference between railroad bridges and wagon bridges lay in the stoutness of their construction. Railroad bridges were engineered and built to carry heavy loads while maintaining a high degree of rigidity. Wagon bridges were required to carry far lighter loads and did not need

## Timber Stringer Bridges

### Architectural Dictionaries

to be as unyielding as railroad structures. So ubiquitous were timber stringer structures, that they have historically been the most common bridge type built in Colorado by a wide margin.

The timber bridges found today on Colorado's roads typically date from the 1930s, 1940s and 1950s. The superstructural technology between the early and later bridges has remained essentially unchanged, with the only difference being the sizes of the members. The bridges of the mid-20th century tend to have more substantial substructures, however, relying more on concrete or steel substructures than their predecessors. Depression-era agencies such as the Works Progress Administration and the Civilian Conservation Corps worked extensively in timber, for reasons of both economy and aesthetics.



Railroad Timber Stringer Trestle  
in San Miguel County

### General Sources

Beakman, George M. et al. *Twentieth Century Building Materials: 1900-1950*. Washington, DC: National Park Service, 1993.

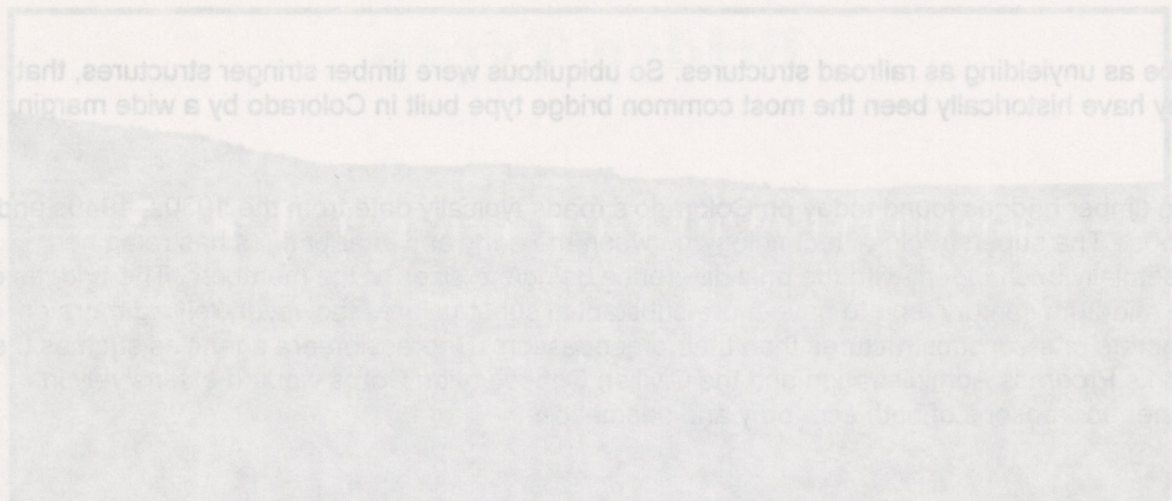
Blumenson, John J.-G. *Identifying American Architecture*. Nashville: American Association for State and Local History, 1981.

Buchner, Ward. *Dictionary of Building Preservation*. New York: John Wiley and Sons Inc., 1990.

Calloway, Stephen and Elizabeth Cromley, eds. *The Elements of Style*. New York: Simon and Schuster, 1991.

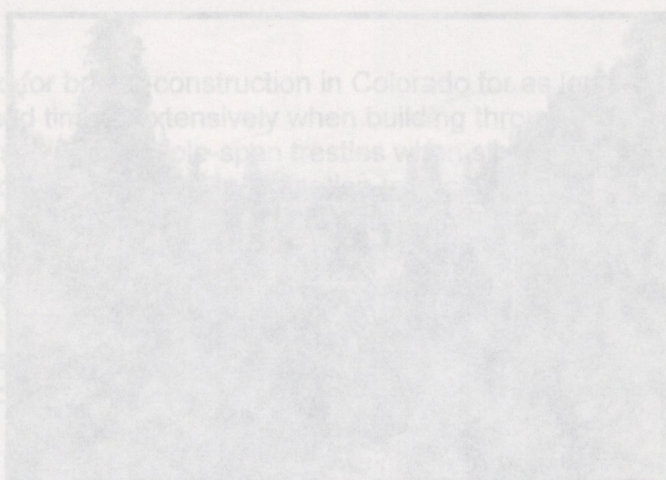
Friedman, Donald. *Historical Building Construction*. New York: W.W. Norton and Co., 1995.

# Timber Stringer Bridges



Huerfano County

Timber has been used for bridge construction in Colorado for as long as the 19th century. The railroad's used timber extensively when building through the mountains in the 19th century, constructing single-span trestles with pile bent piers, or erecting multiple-span bridges. Bridges built for roadway use took many of the same forms as railroad bridges. Timber stringer bridges were common, and crews typically avoided steel and concrete. As cheaply as possible, they built structures that could be



There have been bridge structures in the 19th century. The railroad's used timber extensively when building through the mountains in the 19th century, constructing single-span trestles with pile bent piers, or erecting multiple-span bridges. Bridges built for roadway use took many of the same forms as railroad bridges. Timber stringer bridges were common, and crews typically avoided steel and concrete. As cheaply as possible, they built structures that could be

During the 1910s the trend continued into the 1950s, and timber pile bridges continue to be built today, but primarily at secondary locations such as forest roads. The trend continued into the 1950s, and timber pile bridges continue to be built today, but primarily at secondary locations such as forest roads.

Timber stringers consist of parallel lines of wooden beams laid over the piers and abutments in single- or multiple-span configurations. The substructure is typically timber pile bents, but stone masonry, concrete, steel pile bents, or log cribs were used as well. Like railroad bridges, timber stringer structures for wagon use rarely exceeded 30 feet in length. Those stringer bridges with longer spans were sometimes reinforced with metal tension rods attached under the beams to form what were called "jack trusses." The decks and guardrails of timber trestles were almost always made up of wooden members.

The primary difference between railroad bridges and wagon bridges lay in the stoutness of their construction. Railroad bridges were engineered and built to carry heavy loads while maintaining a high degree of rigidity. Wagon bridges were required to carry far lighter loads and did not need

# Suggested Readings

## Architectural Dictionaries

- Bruden, Ernest. *Illustrated Dictionary of Architecture*. New York: McGraw-Hill, 1998.
- Bucher, Ward and Christine Madrid, eds. *Dictionary of Building Preservation*. New York: John Wiley & Sons, 1996.
- Carley, Rachel. *Visual Dictionary of American Domestic Architecture*. New York: Henry Holt & Co., 1994.
- Ching, Frank. *A Visual Dictionary of Architecture*. New York: Van Nostrand Reinhold, 1995.
- Crispin, Frederic Swing. *Dictionary of Technical Terms*. Milwaukee: Bruce Publishing Co., 1942.
- Curl, James Stevens. *Dictionary of Architecture*. New York: Oxford University Press, 1999.
- Harris, Cyril, ed. *American Architecture: An Illustrated Encyclopedia*. New York: W.W. Norton, 1998.
- . *Dictionary of Architecture and Construction*. New York: McGraw-Hill, 1975 (revised in 1993 and 2000).
- . *Historic Architecture Sourcebook*. New York: McGraw Hill, 1977.
- . *Illustrated Dictionary of Historic Architecture*. New York: Dover, 1983.
- Maliszewski-Pickart, Margaret. *Architecture and Ornament: An Illustrated Dictionary*. Jefferson, NC: McFarland & Co., 1998.
- Pevsner, Nikolas, John Fleming, and Hugh Honour, *The Penguin Dictionary of Architecture*. Baltimore: Penguin Books, 1976.
- Phillips, Stephen. *Old House Dictionary*. Washington, DC: Preservation Press, 1994.

## General Sources

- Bleekman, George M. et. al. *Twentieth Century Building Materials: 1900-1950*. Washington, DC: National Park Service, 1993.
- Blumenson, John J.-G. *Identifying American Architecture*. Nashville: American Association for State and Local History, 1981.
- Buchner, Ward. *Dictionary of Building Preservation*. New York: John Wiley and Sons Inc., 1996.
- Calloway, Stephen and Elizabeth Cromley, eds. *The Elements of Style*. New York: Simon and Schuster, 1991.
- Friedman, Donald. *Historical Building Construction*. New York: W.W. Norton and Co., 1995.

- Hale, Jonathan. *The Old Way of Seeing*. Boston: Houghton Mifflin, 1994.
- Jester, Thomas C. ed. *Twentieth-Century Building Materials: History and Conservation*. New York: McGraw Hill, 1995.
- Jordan, Terry G., Jon T. Kilpinen, and Charles F. Gritzner. *The Mountain West: Interpreting the Folk Landscape*. Baltimore: Johns Hopkins University Press, 1997.
- LeBlanc, Sydney. *Whitney Guide to 20<sup>th</sup> Century American Architecture*. New York: Whitney Library of Design, 1993.
- McAlester, Virginia and Lee. *A Field Guide to American Houses*. New York: Alfred Knopf, 1990.
- Longstreth, Richard. *The Buildings of Main Street*. Washington, DC: Preservation Press, 1987.
- Poppeliers, John C., S. Allen Chambers, Jr., and Nancy B. Schwartz. *What Style is It?*. Washington, DC: Preservation Press, 1983.
- Rifkind, Carole. *A Field Guide to American Architecture*. New York: New American Library, 1980.
- Whiffen, Marcus. *American Architecture Since 1780*. Cambridge, Mass.: M.I.T. Press, 1976.
- Wiseman, Carter. *Shaping a Nation: Twentieth-Century American Architecture and Its makers*. New York: W.W. Norton, 1998.
- Withey, Henry F. and Elsie R. *Biographical Dictionary of American Architects (Deceased)*. Los Angeles: New Age Publishing Co., 1956.

### Colorado Specific

- Brettell, Richard R. *Historic Denver: the Architects and the Architecture, 1858-1893*. Denver: Historic Denver, Inc., 1973.
- Dallas, Sandra. *Colorado Homes*. Norman: University of Oklahoma Press, 1987.
- Kohl, Edith Eudora. *Denver's Historic Mansions: Citadels to the Empire Builders*. Denver: Sage Books, 1957.
- Messinger, Jean Goodwin and Jane Mary Massey Rust. *Faith in High Places: Historic Country Churches in Colorado*. New York: Roberts Rinehart Publishers, 1995.
- Noel, Thomas J. *Buildings of Colorado*. New York: Oxford University Press, 1997.
- . *Denver Landmarks and Historical Districts: A Pictorial Guide*. Niwot, CO: University Press of Colorado, 1996.
- Noel, Thomas J. and Barbara S. Norgren. *Denver: the City Beautiful and its Architects, 1893-1941*. Denver: Historic Denver, Inc., 1987.
- Paglia, Michael, Rodd L. Wheaton and Diane Wray. *Denver: The Modern City*. Denver, Historic Denver Inc., 1999.

Wilk, Diane L. *A Guide to Denver's Architectural Styles and Terms*. Denver: Historic Denver, Inc, 1995.

Wray, Diane. *Arapahoe Acres: An Architectural History, 1949-1957*. Englewood, CO: Wraycroft, Inc., 1997.

### Special Topics

Bradley, Betsy Hunter. *The Works: The Industrial Architecture of the United States*. New York: Oxford University Press, 1999.

Breeze, Carla and Marcus Whiffen. *Pueblo Deco: the Art Deco of the Southwest*. Albuquerque: University of New Mexico Press, 1984.

Fogelson, Robert M. *America's Armories: Architecture, Society and Public Order*. Cambridge: Harvard University Press, 1989.

Francaviglia, Richard V. *Hard Places: Reading the Landscape of America's Historic Mining Districts*. Iowa City: University of Iowa, 1991.

———. *Main Street Revisited: Time, Space and Image Building in Small Town America*. Iowa City: University of Iowa Press, 1966.

Groth, Paul and Todd W. Bressi (eds.) *Understanding Ordinary Landscapes*. New Haven: Yale University Press, 1997.

Gulliford, Andrew. *America's County Schools*. Washington, DC: Preservation Press, 1984.

Henderson, Wayne and Scott Benjamin. *Gas Stations: Landmarks of the American Road*. Osceola, WI: Motorbooks International, 1994.

Hine, Thomas. *Populuxe*. New York: Alfred A. Knopf, 1987.

Hitchcock, Henry-Russell and Phillip Johnson. *The International Style*. Originally published in 1932. New York: W.W. Norton & Co., 1995.

Jakle, John A. *City Lights*. Baltimore: Johns Hopkins University, 2001.

Jakle, John A. and Keith A. Scule. *Gas Station in America*. Baltimore: Johns Hopkins University Press, 1994.

Jakle, John A., Keith A. Scule and Jefferson S. Rogers. *The Motel in America*. Baltimore: Johns Hopkins University Press, 1996.

Lancaster, Clay. *The American Bungalow: 1880-1930*. Mineola, NY: Dover Publications, 1995.

Loeb, Carolyn S. *Entrepreneurial Vernacular: Developers' Subdivisions in the 1920s*. Baltimore: Johns Hopkins University Press, 2001.

Mahar-Keplinger, Lisa. *Grain Elevators*. New York: Princeton Architectural Press, 1993.

- Noble, Allen G. and Richard K. Cleek. *The Old Barn Book: A Field Guide to North American Bams and Other Farm Structures*. New Brunswick, NJ: Rutgers University Press, 1995.
- Noble Allen G. and Hubert G.H. Wilhelm. *Barns of the Midwest*. Athens, OH: Ohio University Press, 1995.
- Overturf, Jeff and Paul Willard. *A Class II Cultural Resource Inventory for the Dinner Park Timber Sale, North Park Ranger District, Routt National Forest*. USDA Forest Service, 1998. OAHF report files - JA.FS.R44 (Log tie hack cabins and associated history.)
- Palliser, George and Charles Palliser. *Palliser's Late Victorian Architecture*, Reprint of 1878 publication. Watkins Glen, NY: American Life Foundation, 1978.
- Plante, Ellen M. *The American Kitchen 1700 to the Present*. New York: Facts on File, Inc., 1995.
- Pounds, Robert E. *Santa Fe Depots: The Western Lines*. Dallas: Kachina Press, 1984.
- Sagstetter, Beth and Bill Sagstetter. *The Mining Camps Speak*. Denver: BenchMark Publishing, 1998.
- Schweitzer, Robert and Michael W.R. Davis. *America's Favorite Homes: Mail Order Catalogues as a Guide to Popular Early 20th Century Houses*. Detroit: Wayne State University Press, 1990.
- Slaton, Amy E. *Reinforced Concrete and the Modernization of American Building, 1900-1930*. Baltimore: Johns Hopkins University Press, 2001.
- Spears, Beverley. *American Adobes: Rural Houses of Northern New Mexico*. Albuquerque; University of New Mexico Press, 1986.
- Stevenson, Katherine Cole and H. Ward Jandal. *Houses by Mail: A Guide to Houses from Sears, Roebuck and Company*. Washington, DC: Preservation Press, 1984.
- Thomas, Bernice L. *America's 5 & 10 Cent Stores: The Kress Legacy*. New York: John Wiley & Sons, 1997.
- Wernmiel, Sara E. *The Fireproof Building*. Baltimore: Johns Hopkins University Press, 2000.
- Wilson, Mary. *Log Cabin Studies*. Ogden, UT: USDA Forest Service, 1984.

RECEIVED

APR 07 2003

STATE PUBLICATIONS  
Colorado State Library