

COLORADO DIVISION OF WILDLIFE

South Platte Waterfowl & Small Game Research SWAs



RESEARCH PROPERTY GUIDE

Beginning in 2008, the Colorado Division of Wildlife will operate mandatory check-out stations at 7 State Wildlife Areas (SWAs) in northeastern Colorado: Atwood SWA, Bravo SWA, Brush SWA, Jackson Lake SWA, Jean K. Tool SWA, Overland Trail SWA, and Red Lion SWA. **For each of these properties, hunter access must occur only through a designated parking area.** During the regular duck hunting season framework (October 4, 2008 through January 25, 2009), all waterfowl and small game hunters using these SWAs must check out at the mandatory check station before leaving the property. Deer and turkey hunters are not required to check out at the check stations on these properties. Check stations will not be operated before October 4 or after January 25, 2009. In addition to the check-out requirement, new regulations will be implemented that limit hunter numbers on some of these SWAs. This brochure provides the waterfowl and small game regulations for these properties, and provides maps showing the locations of the mandatory check stations.

Why require check stations? The Division of Wildlife is evaluating if hunting restrictions improve numbers of waterfowl using a SWA, harvest success (number of waterfowl or small game harvested per hunter), and hunter satisfaction. The Division of Wildlife will gather this information by interviewing waterfowl and small game hunters as they check out at the check station.

Why these State Wildlife Areas? We are interested in evaluating the effect of hunting restrictions on a cross-section of SWAs within the South Platte River valley. We have paired SWAs that have similar habitat conditions; one SWA in each pair will have no additional restrictions on waterfowl and small game hunting (check station only), and the other SWA will have additional hunting restrictions. Jackson Lake and Red Lion SWAs represent properties away from the river channel with shallow wetland impoundments, Atwood and Overland Trail SWAs represent small properties along the river, while Bravo and Brush/Jean K. Tool SWAs (combined) represent larger properties along the river with more habitat diversity.

What are the check-out procedures? After finishing their hunt, waterfowl and small game hunters must report to the check station. A check station attendant will usually be present. The attendant will record the hunting license numbers of all hunters in each hunting party, and the number and species of waterfowl and small game harvested by each. The attendant will also ask hunters several questions about their hunting methods, experiences, and satisfaction. The entire check-out procedure should take less than 5 minutes per hunting party. If an attendant is not present at the check station, check-out cards will be provided at the check station for each hunter to record this information.

Are these changes permanent? The evaluation of hunting regulations on these 7 SWAs is expected to take up to 6 hunting seasons. The check stations will be operated each year throughout the evaluation. After 2-3 years, the waterfowl and small game hunting regulations will be switched between the SWAs in each pair. At the end of the evaluation, the Division of Wildlife will use the results to make recommendations to the Colorado Wildlife Commission about future hunting regulations on these and other SWAs in northeastern Colorado.

COLORADO DIVISION OF WILDLIFE

Department of Natural Resources

6060 Broadway, Denver 80216

(303) 297-1192

www.wildlife.state.co.us

Created August 2008

Maps designed and prepared by CDOW GIS



The Colorado Division of Wildlife of the Department of Natural Resources prohibits discrimination on the basis of race, color, religion, sex, national origin and disabilities in all aspects of employment and public participation in its programs and services. For information or to register a complaint, contact the Colorado Division of Wildlife, 6060 Broadway, Denver, CO 80216, or call (303) 297-1192.

Director, Colorado Division of Wildlife: Thomas E. Remington

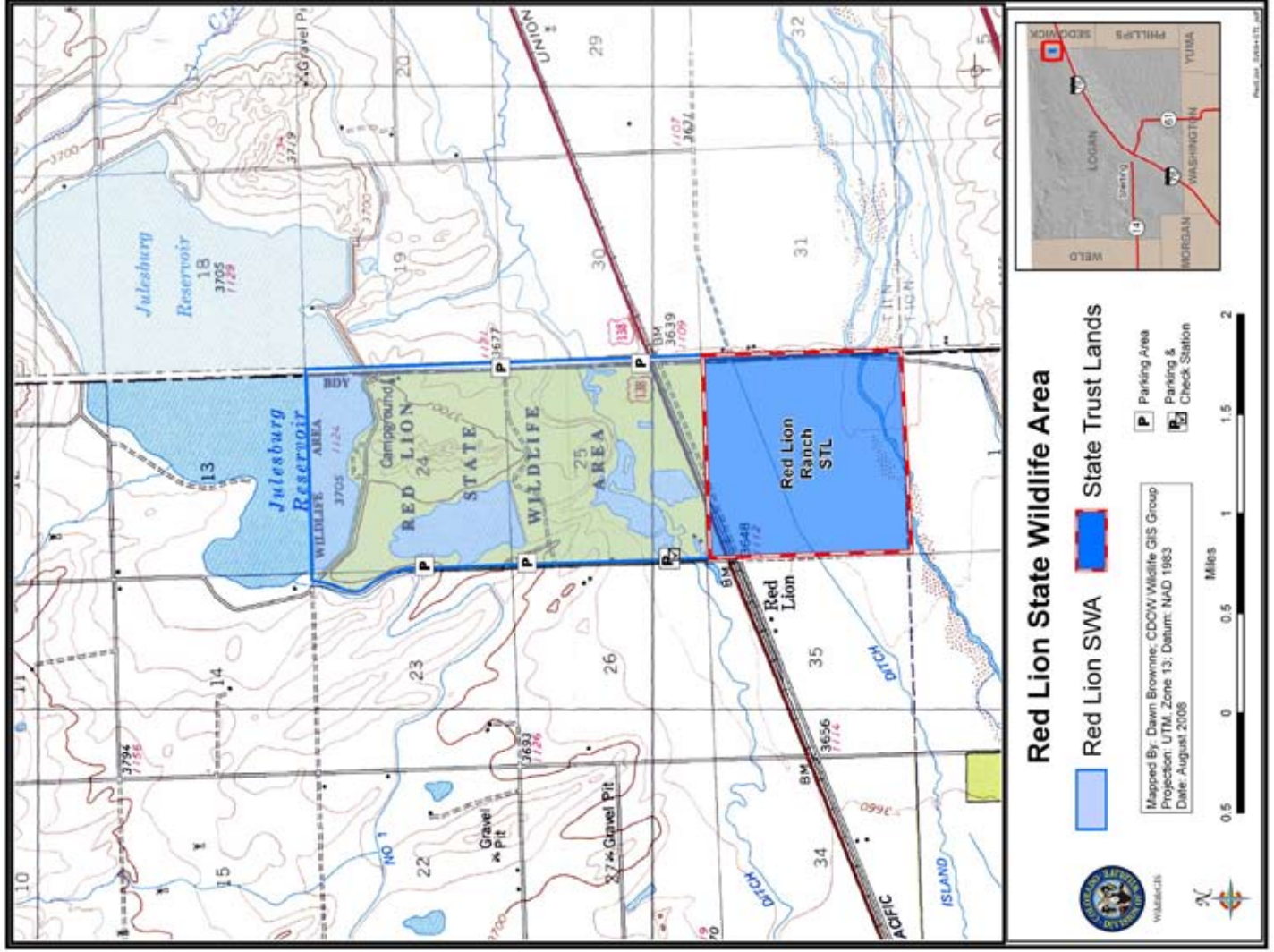
Wildlife Commissioners (as of July 2008): Robert Bray, Chair; Brad Coors, Vice Chair; Tim Glenn, Secretary; Members; Dennis Buechler • Jeffrey Crawford • Dorothea Farris • Roy McAnally • Richard Ray • Robert Streeter Harris Sherman, ex-officio member; John Stulp, ex-officio member.

PROPERTIES WITHOUT RESERVATIONS AND TIMING RESTRICTIONS

Red Lion State Wildlife Area - Logan County

- a. Boating is prohibited except for float tubes or carry-on craft propelled by hand for fishing or hunting purposes only.
 - b. Boating is prohibited from October 1 to March 31 except for hand-propelled craft used to place or retrieve decoys or retrieve downed waterfowl.
 - c. Fishing is restricted to the dam from October 1 to March 31. Ice fishing during this time is restricted to within 50 yards of the dam.
 - d. Hunting is prohibited from the frozen surface of the lake.
 - e. Hunting is prohibited from any floating device.
 - f. Camping is prohibited.
 - g. Fires are prohibited.
 - h. Target practice is prohibited except when authorized by the area wildlife manager.
 - i. Discharge of firearms or bows is prohibited except when hunting.
 - j. Discharge of bows is allowed for bowfishing.
 - k. During the special late light goose season and any conservation order for light geese, light goose hunting is allowed in the area bounded on the north by Logan Co Rd 970, on the east by Logan Co Rd 97 (Sedgwick Co Rd 1), on the south by US 138, and on the west by Logan Co Rd 95.
- l. Beginning with the first day of the regular duck season through the last day of the regular duck season, all waterfowl and small game hunters must check out at the designated check station before leaving the property.**
- m. All access must be from designated parking areas only.**

****Hunters note:** New regulations appear in **bold** print in this publication.



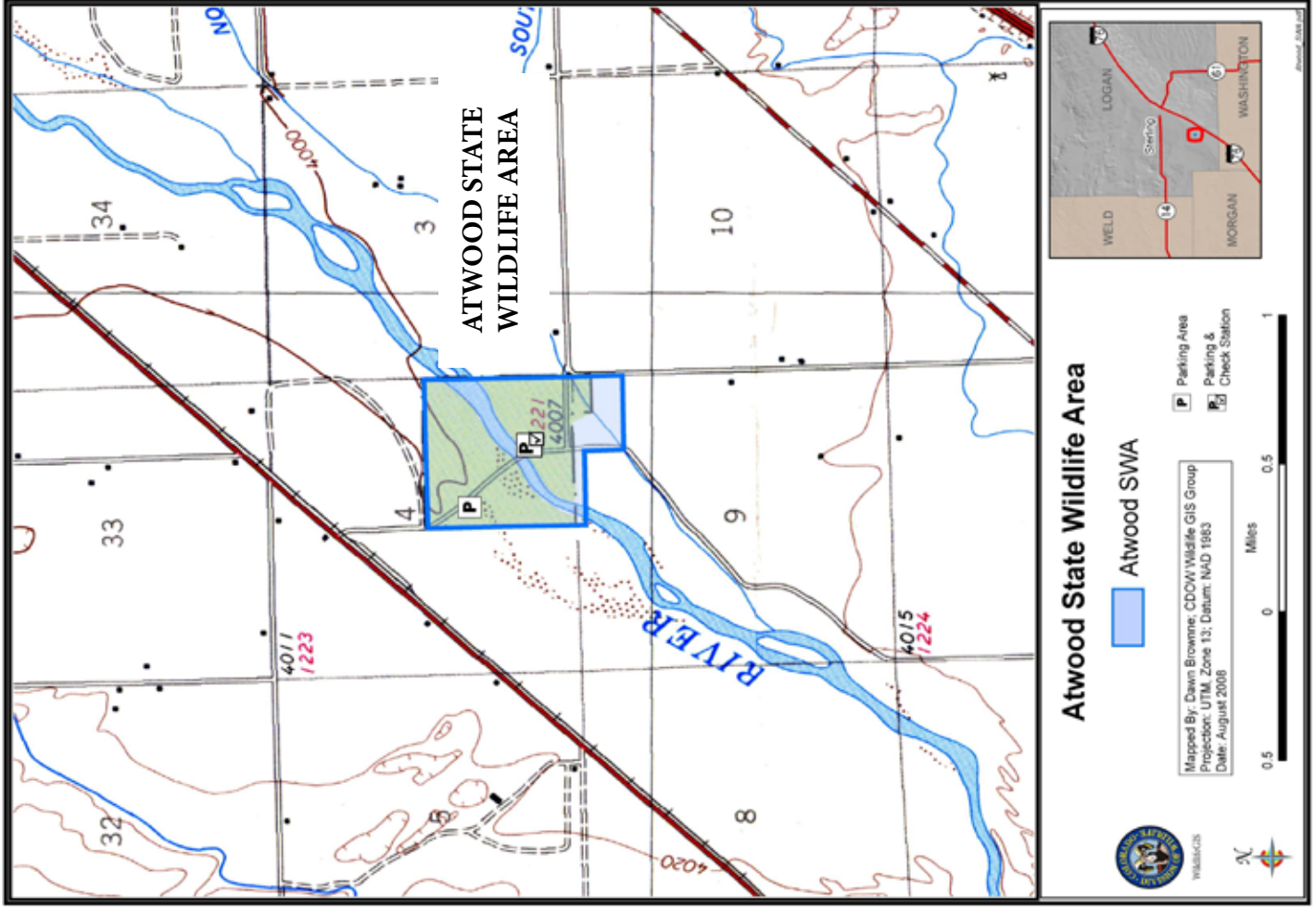
PROPERTIES WITHOUT RESERVATIONS AND TIMING RESTRICTIONS

Atwood State Wildlife Area - Logan County

- a. Camping is prohibited.
- b. Fires are prohibited.
- c. Target practice is prohibited except when authorized by the area wildlife manager.
- d. Discharge of firearms or bows is prohibited except when hunting.
- e. Discharge of bows is allowed for bowfishing.
- f. All recreational activities except deer hunting are prohibited on the opening weekend of the regular plains rifle deer season and on the opening day and first weekend of the late plains rifle deer season.
- g. Horse use is prohibited except when used in direct association with training of hunting dogs, and then only permitted in February, March, April (through the Wednesday immediately preceding the opening of the spring turkey season) and August.
- h. **Beginning with the first day of the regular duck season through the last day of the regular duck season, all waterfowl and small game hunters must check out at the designated check station before leaving the property.**
- i. **All access must be from designated parking areas only.**

NOTICE

This brochure is not a legal notice nor a complete collection of hunting regulations and laws. It is a condensed guide issued for the hunters convenience. Copies of wildlife statutes and regulations can be obtained from a DOW office and are available on our website, www.wildlife.state.co.us. For questions, call the DOW at (303) 291-7227 (Denver), (970) 472-4300 (Fort Collins) or (970) 842-6300 (Brush).



PROPERTIES WITHOUT RESERVATIONS AND TIMING RESTRICTIONS

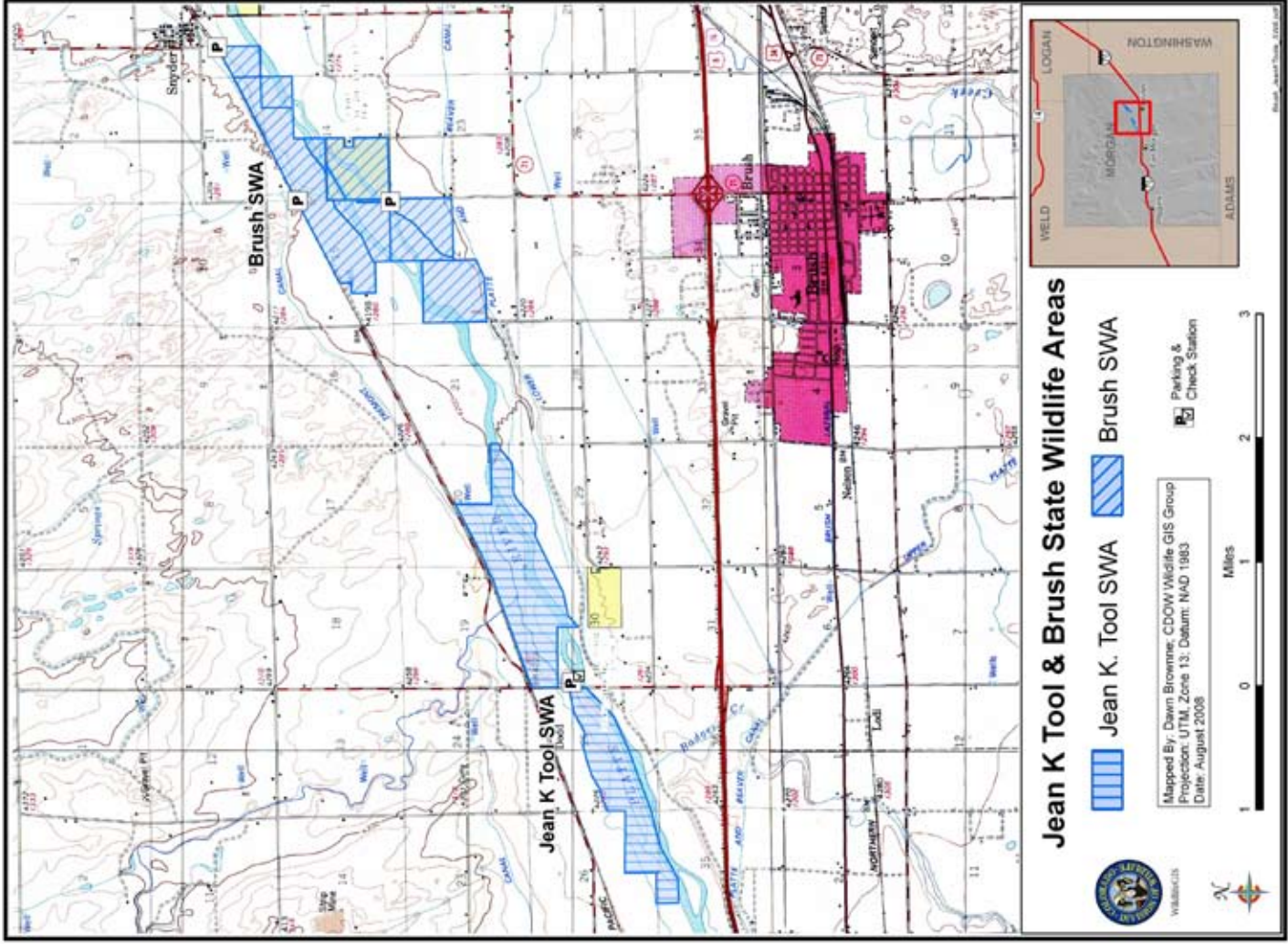
Jean K. Tool • Brush State Wildlife Areas

Morgan County

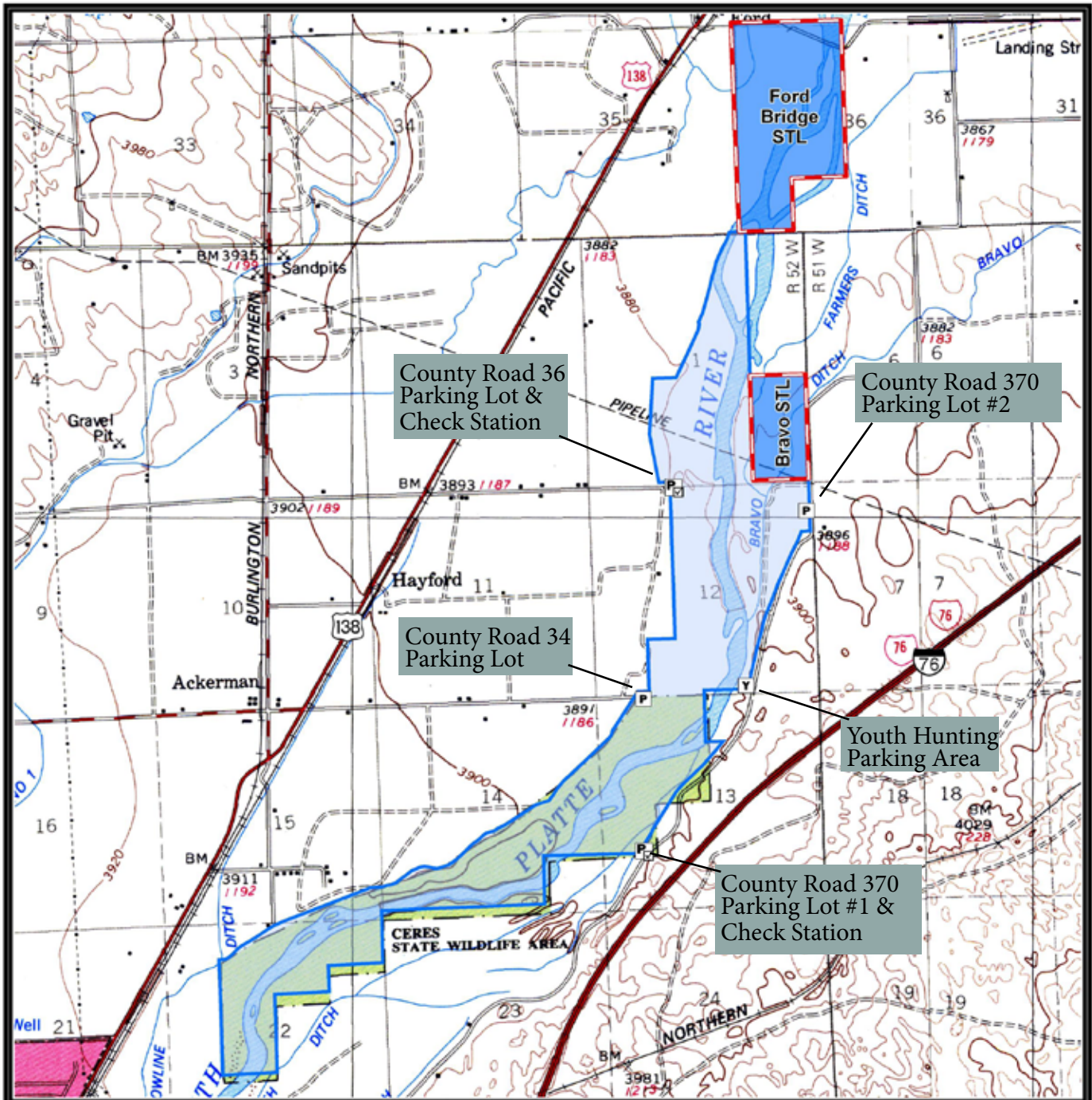
- Camping is prohibited.
- Fires are prohibited.
- Public access is prohibited from 9:00 p.m. to 3:00 a.m. daily except when authorized by a night hunting permit.
- Discharge of firearms or bows is prohibited except when hunting.
- Target practice is prohibited except when authorized by the area wildlife manager.
- All recreational activities except deer hunting are prohibited on the opening weekend of regular plains rifle deer season and on the opening day and first weekend of the late plains rifle deer season.
- Horse use is prohibited except when used in direct association with training of hunting dogs, and then only permitted in February, March, April (through the Wednesday immediately preceding the opening of the spring turkey season) and August.
- Beginning with the first day of the regular duck season through the last day of the regular duck season, all waterfowl and small game hunters must check out at the designated check station before leaving the property.**
- All access must be from designated parking areas only.

NOTICE

Specific season dates for small game and waterfowl species can be found within the **2008 SMALL GAME and WATERFOWL** brochures, which are available at Division offices, license agents, and on our website at www.wildlife.state.co.us



PROPERTIES WITH RESERVATIONS AND TIMING RESTRICTIONS



Bravo State Wildlife Area



WildlifeGIS

Bravo SWA State Trust Lands

Mapped By: Dawn Brownne; CDOW Wildlife GIS Group
 Projection: UTM, Zone 13; Datum: NAD 1983
 Date: August 2008

- P Parking Area
- P Parking & Check Station
- Y Youth Hunting Parking Area



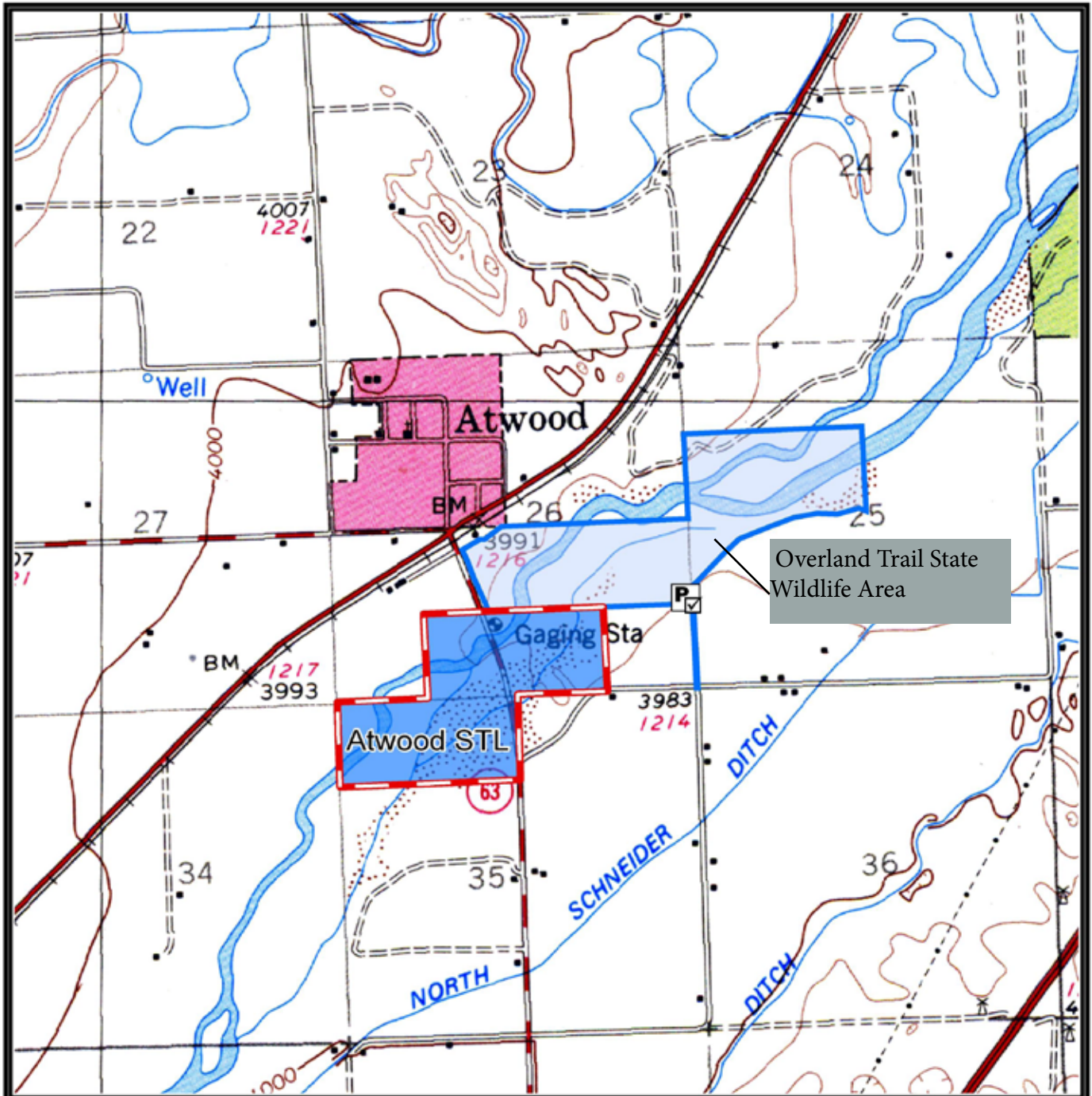
PROPERTIES WITH RESERVATIONS AND TIMING RESTRICTIONS

Bravo State Wildlife Area - Logan County

- a. Camping is prohibited.
- b. Fires are prohibited.
- c. Discharge of firearms or bows is prohibited except when hunting.
- d. Target practice is prohibited except when authorized by the area wildlife manager.
- e. All recreational activities except deer hunting are prohibited on the opening weekend of the regular plains rifle deer season and on the opening day and first weekend of the late plains rifle deer season.
- f. Field trials may be authorized during February, March and August only. Field trials are limited to one per year.
- g. Horse use is prohibited except when used in direct association with training of hunting dogs, and then only permitted in February, March, April (through the Wednesday immediately preceding the opening of the spring turkey season) and August.
- h. All access must be from designated parking areas only.**
- i. Beginning with the first day of the regular duck season through the last day of the regular duck season the following regulations apply.**

- 1. All waterfowl and small game hunting on Bravo State Wildlife Area is regulated by a reservation system and through a mandatory check station. During this period all hunting is by reservation only. Reservations may be made by calling 1-800-846-9453. Reservations are not accepted more than 14 days nor less than 48 hours in advance of the hunt date. Failure to hunt a reserved area without prior cancellation may cause forfeiture of privilege to make reservations for the remainder of the hunting season. Using the reservation system, hunters are limited to a maximum of one reservation per hunt date and one reservation per phone call. Reservations are not transferable. The individual named on the reservation must be at the property on the day of the hunt and be a licensed hunter. Reservations will be limited as follows: County Road 34 Parking Lot, one (1) waterfowl and one (1) small game reservation per day. County Road 36 Parking Lot, one (1) waterfowl and one (1) small game reservation per day. County Road 370 Parking Lot #1, two (2) waterfowl and two (2) small game reservations per day. Youth/Mentor Parking Lot, one (1) waterfowl reservation (one mentor and at least one youth per reservation required) per day. County Road 370 Parking Lot #2, one (1) waterfowl and one (1) small game reservation per day.**
- 2. No more than four (4) people per reservation.**
- 3. Mentors must be at least 18 years of age and have a valid hunter education certificate. Mentors are not required to hunt.**
- 4. Waterfowl and small game hunting is permitted only on Saturdays, Sundays, Wednesdays, Columbus Day (observed), Veterans Day (observed), Thanksgiving Day, Christmas Day, New Year's Day and Martin Luther King Jr. Day.**
- 5. All waterfowl and small game hunters must check out at a mandatory check station by 2:00 PM daily.**
- 6. Deer and fall turkey hunting are permitted daily during established deer and fall turkey seasons. Deer and turkey hunters do not need to check-in or out, but a reservation is required and are unlimited in number.**
- 7. All uses other than hunting are prohibited.**

PROPERTIES WITH RESERVATIONS AND TIMING RESTRICTIONS



Overland Trail State Wildlife Area

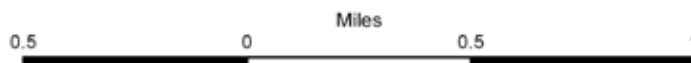
-  Overland Trail SWA
-  State Trust Lands

Mapped By: Dawn Brownne; CDOW Wildlife GIS Group
Projection: UTM, Zone 13; Datum: NAD 1983
Date: August 2008

 Parking & Check Station



WildlifeGIS

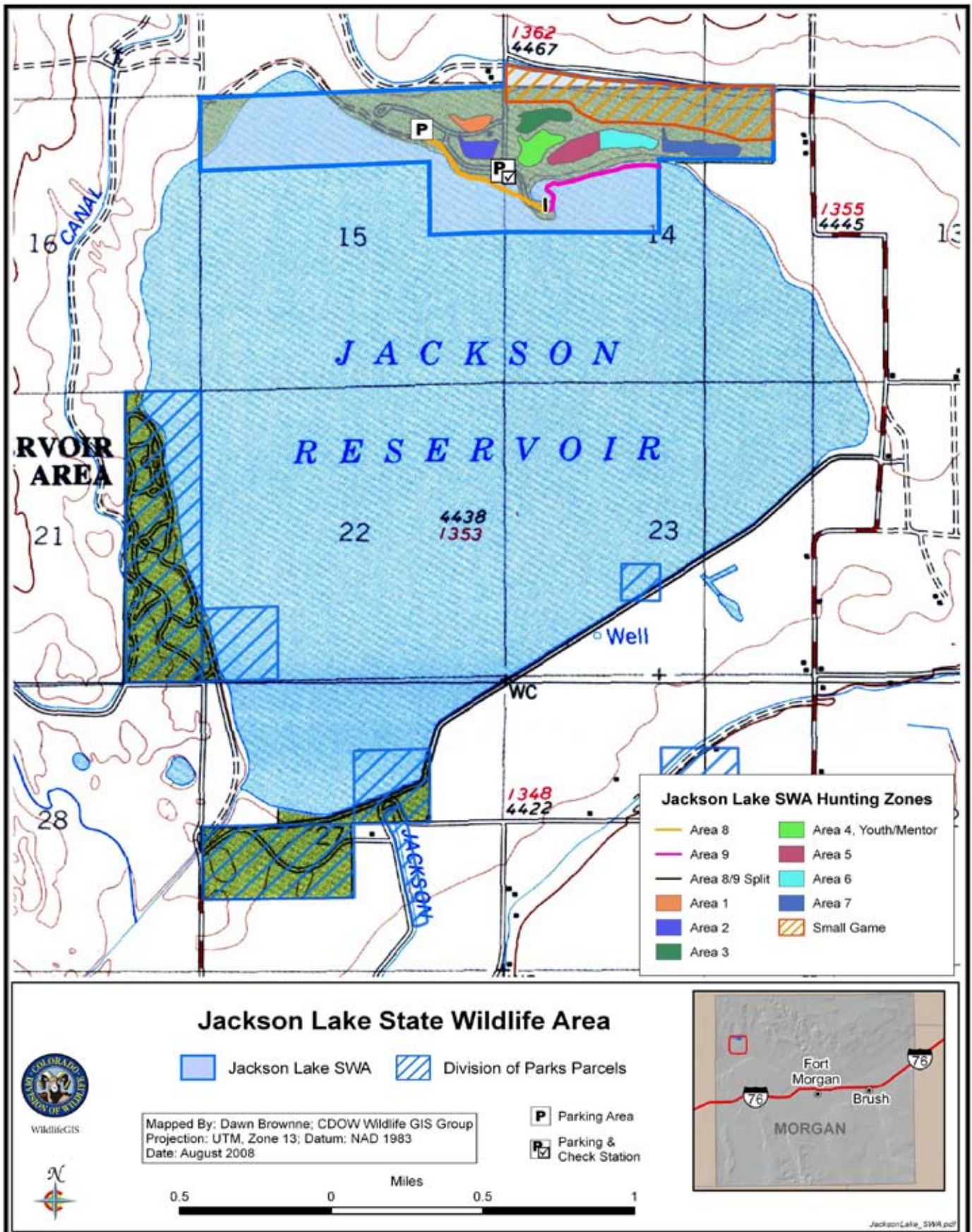


PROPERTIES WITH RESERVATIONS AND TIMING RESTRICTIONS

Overland Trail State Wildlife Area

- a. Hunting on this property is regulated by a reservation system. Reservations may be made by calling 1-800-846-9453 or through the Division of Wildlife web site (www.wildlife.state.co.us). Reservations are not accepted more than 14 days nor less than 48 hours in advance of the hunt date. Failure to hunt a reserved area without prior cancellation may cause forfeiture of privilege to make reservations for the remainder of the hunting season. Using the reservation system, hunters are limited to a maximum of one reservation per hunt date and one reservation per phone call. Reservations are not transferable. The individual named on the reservation must be at the property on the day of the hunt and be a licensed hunter. Hunters must follow check-in and check-out procedures as posted at the property.
- b. Access allowed only through designated parking area and through use of mandatory check station.**
- c. Public access is restricted to foot traffic only.
- d. Access is limited to four (4) groups or vehicles with a maximum number of four (4) people per group.
- e. From June 1 through August 31, access is limited to wildlife observation only, and only on Saturday, Sunday, and Wednesday.
- f. From September 1 through May 31, hunting is permitted only on Saturday, Sunday, Wednesday, legal holidays, and the opening days of the plains rifle and late rifle deer seasons. All recreational activities except deer hunting are prohibited on the opening weekend of the regular plains rifle deer season and on the opening day and first weekend of the late plains rifle deer season.
- g. Turkey hunting is permitted on opening day, Saturday, Sunday, and Wednesday of the turkey seasons.
- h. Fires are prohibited.
- i. Camping is prohibited.
- j. Discharge of bows and firearms is prohibited, except while hunting or for target practice. Target practice is allowed only when authorized by the area wildlife manager.
- k. Discharge of bows is allowed for bowfishing.
- l. Dog training is prohibited.
- m. Horse use is prohibited.
- n. Beginning with the first day of the regular duck season through the last day of the regular duck season the following regulations apply:**
 - 1. All waterfowl and small game hunters must check out at the designated check station before leaving the property. Deer and turkey hunters do not need to check out at the check station, but a reservation is required.**
 - 2. No more than four (4) people per reservation**
 - 3. Waterfowl and small game hunting is permitted only on Saturdays, Sundays, Wednesdays, Columbus Day (observed), Veterans' Day (observed), Thanksgiving Day, Christmas Day, New Year's Day and Martin Luther King Jr. Day.**
 - 4. Waterfowl and small game hunters must check out at the check station by 2:00 PM daily.**
 - 5. All uses other than hunting are prohibited.**

PROPERTIES WITH RESERVATIONS AND TIMING RESTRICTIONS



PROPERTIES WITH RESERVATIONS AND TIMING RESTRICTIONS

Jackson Lake State Wildlife Area

- a. Camping is prohibited.
- b. Fishing is prohibited from November 1 through the last day of the regular waterfowl season, except that fishing is permitted from the dam only through November 30.
- c. Hunting is prohibited from the frozen surface of the lake, and elsewhere as posted, when necessary for wildlife habitat management work.
- d. Ice fishing is prohibited.
- e. Fires are prohibited.
- f. Discharge of firearms or bows is prohibited except when hunting.
- g. Discharge of bows is allowed for bowfishing.
- h. Target practice is prohibited except when authorized by the area wildlife manager.
- i. All access must be from designated parking areas only.**
- j. Beginning with the first day of the regular duck season through the last day of the regular duck season the following regulations apply.**

1. All waterfowl and small game hunting on Jackson Lake State Wildlife Area is regulated by a reservation system and through a mandatory check station. During this period all hunting is by reservation only. Reservations may be made by calling 1-800-846-9453. Reservations are not accepted more than 14 days nor less than 48 hours in advance of the hunt date. Failure to hunt a reserved area without prior cancellation may cause forfeiture of privilege to make reservations for the remainder of the hunting season. Using the reservation system, hunters are limited to a maximum of one reservation per hunt date and one reservation per phone call. Reservations are not transferable. The individual named on the reservation must be at the property on the day of the hunt and be a licensed hunter. Reservations are limited as follows: Hunting reservations are regulated by zones, and one (1) zone is reserved for youth/mentor hunting only (No more than two mentors and at least one youth per reservation). Three (3) additional reservations are available for waterfowl hunting from vessels on Jackson Lake. Boat hunting reservations will be cancelled and discontinued when unsafe ice conditions exist. Hunters with boat hunting reservations are required to call the reservation line two (2) days before the scheduled hunt to confirm ice conditions. Only boat hunters with a reservation are exempt from the November 1 boat closure.

2. Waterfowl and small game hunters are required to check out at the check station located at the parking lot one half mile south of the intersection of Morgan Co Rd CC and Morgan Co Rd four (4) by 2:00 PM daily. Waterfowl hunters with boat hunting reservations are not required to check out at the check station.

3. Vessels and hunters must stay within the designated hunting zone and are prohibited from hunting within 150 yards of the shoreline and other vessels. All state boat safety and hunting laws apply. Vessels may be launched from Jackson Lake State Park, state park pass is required. Vessels may be hand launched from the State Wildlife Area as posted.

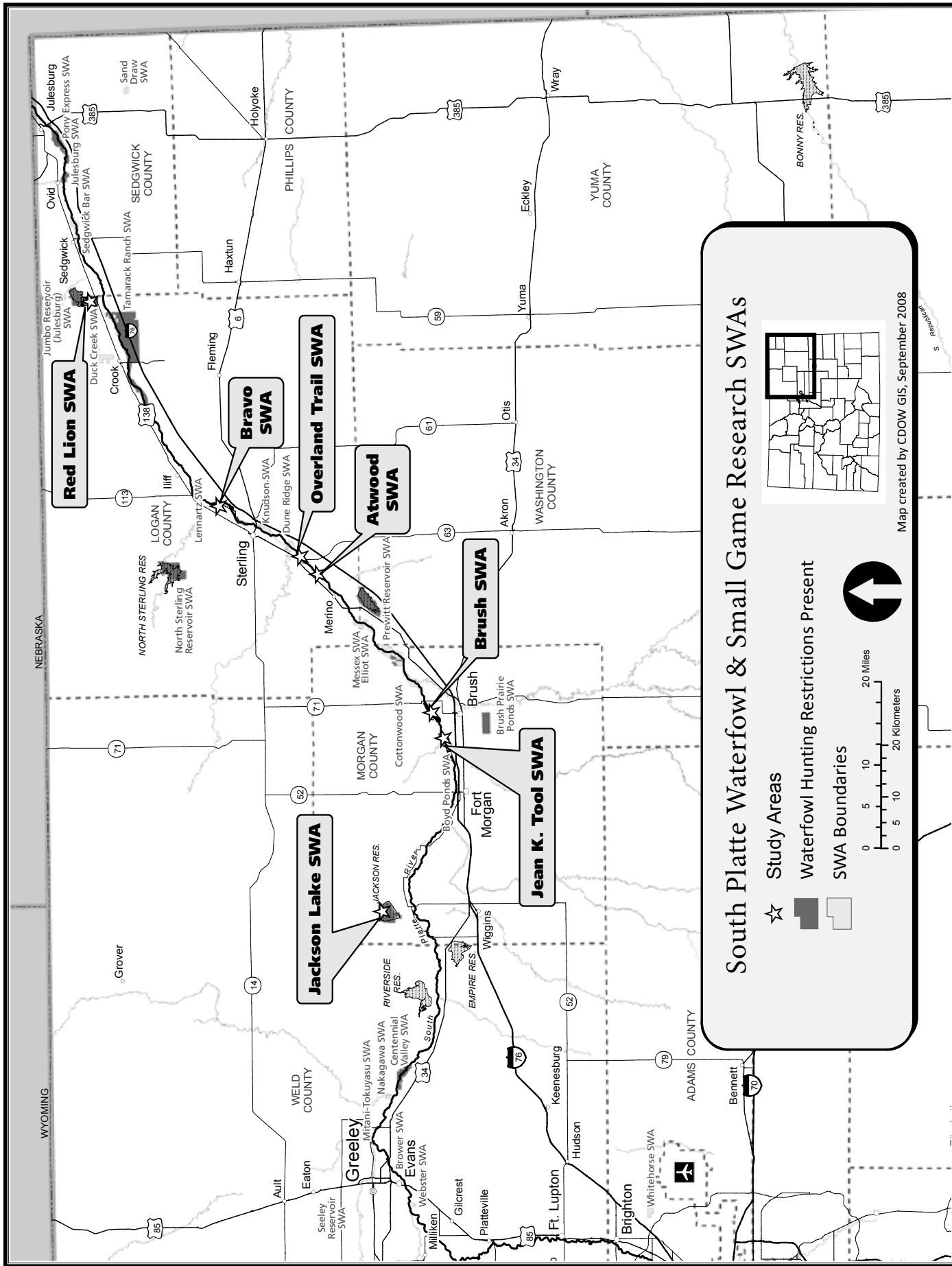
4. No more than four (4) people per reservation.

5. Mentors must be at least 18 years of age and have a valid hunter education certificate. Mentors are not required to hunt.

6. Waterfowl and small game hunting is permitted only on Saturdays, Sundays, Wednesdays, Columbus Day (observed), Veterans' Day (observed), Thanksgiving Day, Christmas Day, New Year's Day and Martin Luther King Jr. Day.

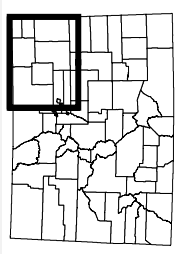
7. Deer hunting is permitted daily during established deer seasons. Deer hunters are not required to check out at the check station. Deer hunting reservations are required and are unlimited in number.

8. All uses other than hunting are prohibited.



South Platte Waterfowl & Small Game Research SWAs

- ☆ Study Areas
- Waterfowl Hunting Restrictions Present
- SWA Boundaries



Map created by CDOW GIS, September 2008