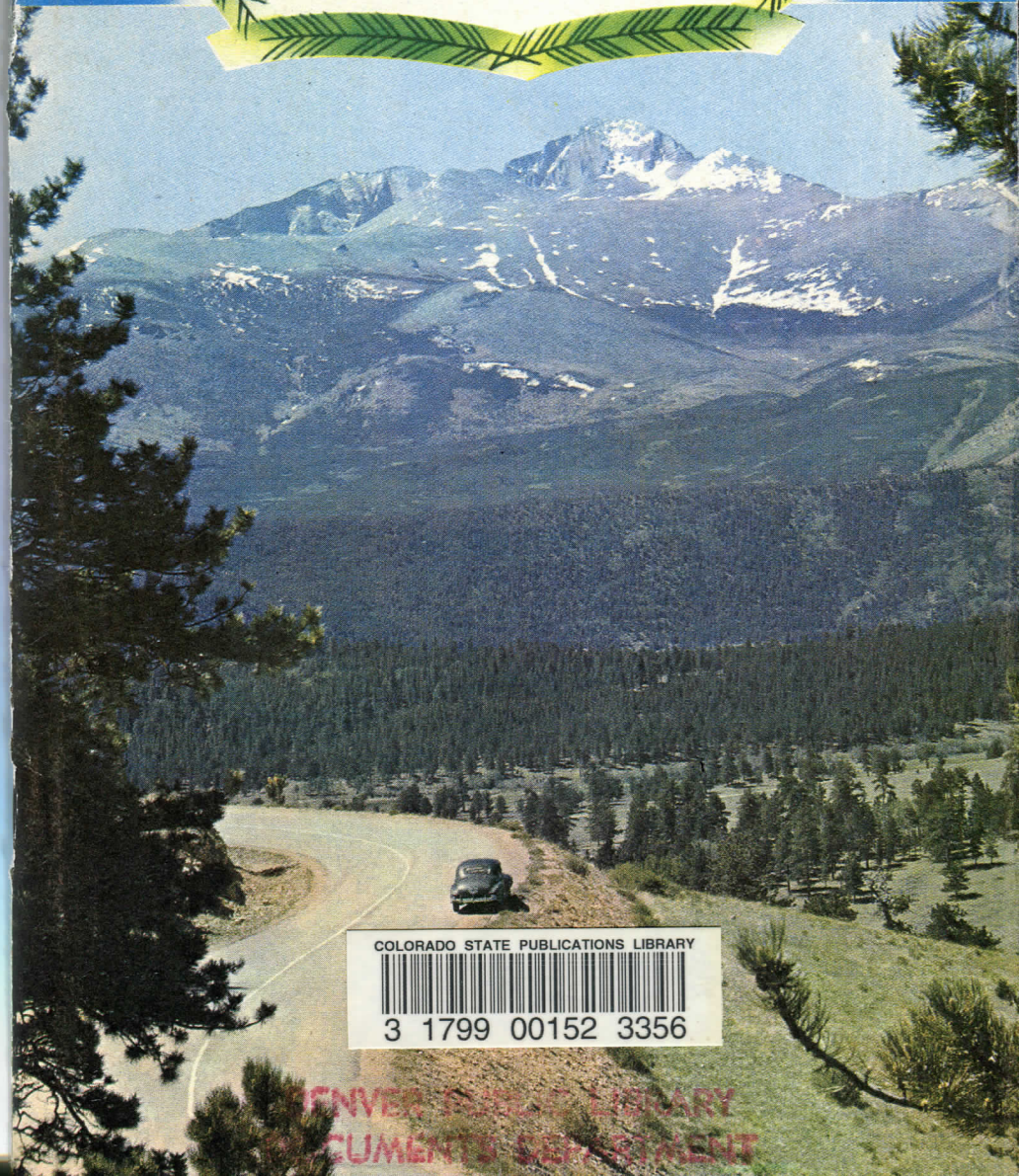


Ex G. 2/C 77/1954

C. 2

COOL • COLORFUL  
**COLORADO**

*Invites You!*



COLORADO STATE PUBLICATIONS LIBRARY



3 1799 00152 3356

DENVER PUBLIC LIBRARY  
DOCUMENTS DEPARTMENT

The latching string's on the outside! That's our way of saying a good old-fashioned Western welcome awaits you. Wherever your travels take you in Colorful Colorado, you'll find the hospitality as warm as the weather is delightfully cool.

This booklet, by word and picture, gives you a preview of the vacation fun Colorado offers you and your family. Should you wish specific information of places or events, just let us know.

The people of Colorado extend to you a cordial invitation to enjoy your vacation with us.

Be seeing you!

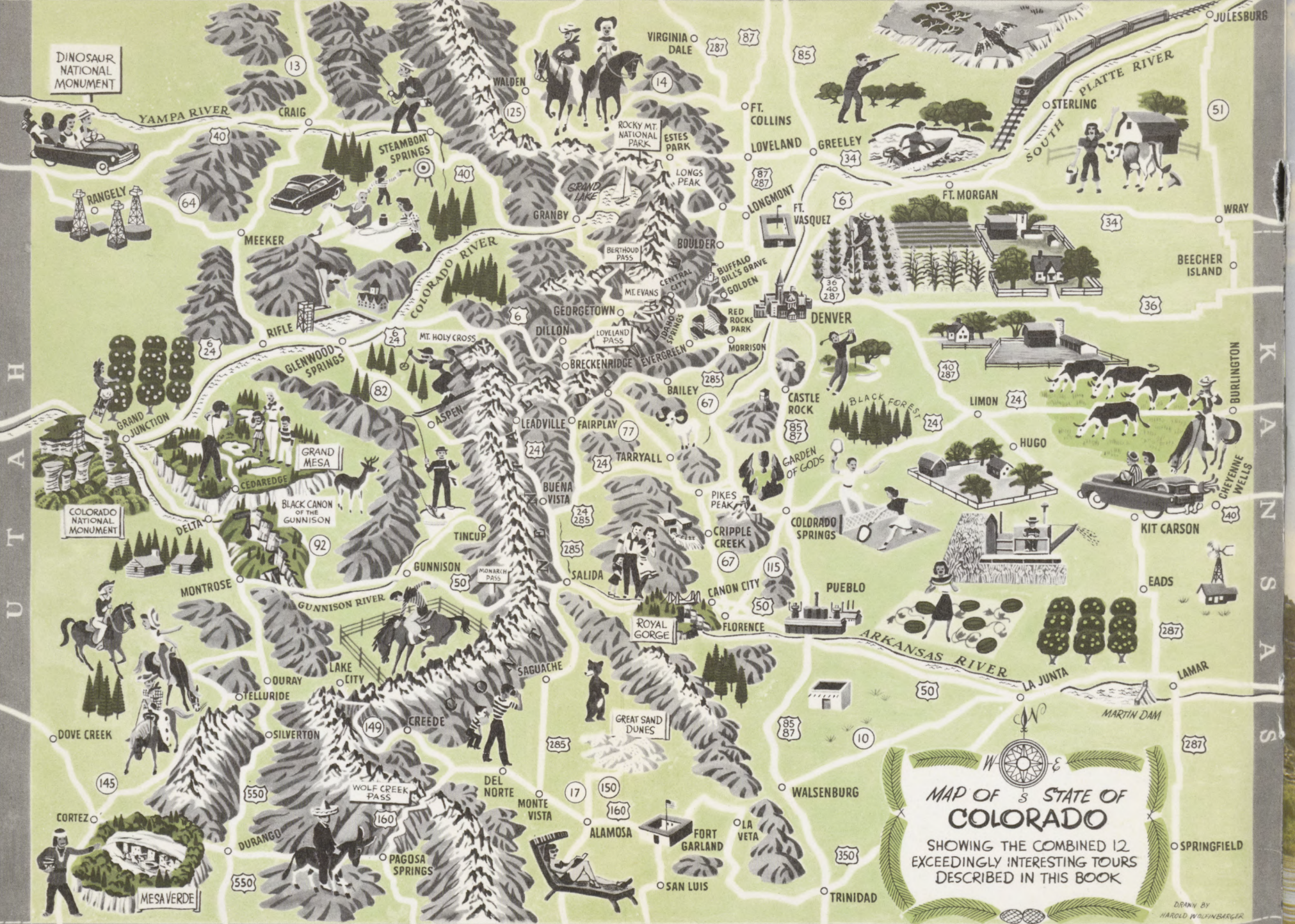
*Howdy!*



DENVER PUBLIC LIBRARY  
DOCUMENTS DEPARTMENT

URB

K  
A  
N  
S  
A  
S



DINOSAUR NATIONAL MONUMENT

COLORADO NATIONAL MONUMENT

### MAP OF STATE OF COLORADO

SHOWING THE COMBINED 12 EXCEEDINGLY INTERESTING TOURS DESCRIBED IN THIS BOOK

DRAWN BY HAROLD WOLFINBARGER

# How to get the Most out of your Colorado Vacation

Because there's so much to see and do in Colorado (7th largest state), we have suggested auto trips that will help you to get the most enjoyment out of your vacation. The 12 trips described and pictured take you into every part of our scenic wonderland. Each is a carefully planned, complete tour.

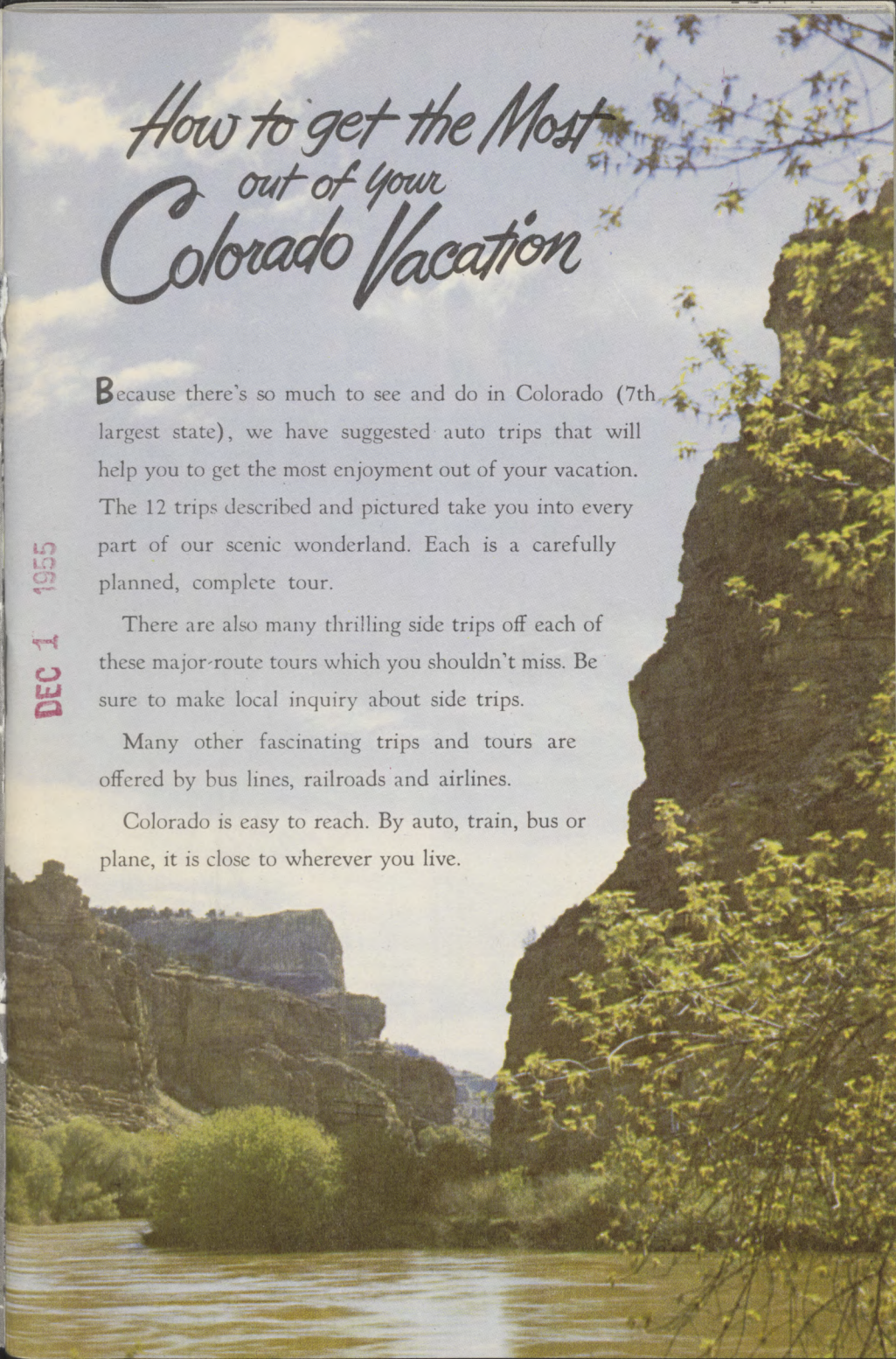
There are also many thrilling side trips off each of these major-route tours which you shouldn't miss. Be sure to make local inquiry about side trips.

Many other fascinating trips and tours are offered by bus lines, railroads and airlines.

Colorado is easy to reach. By auto, train, bus or plane, it is close to wherever you live.

DEC 1 1955

K  
A  
N  
S  
A  
S





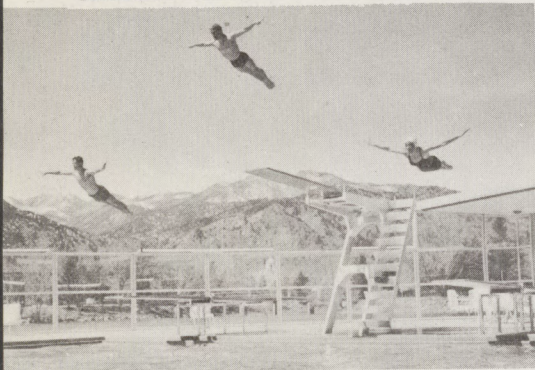
## COLORADO CLIMATE

# Your Colorado Vacation

Vacation pleasures know no season in Color-ful Colorado. Spring, Summer, Autumn, Winter—no matter in which season your vacation falls—you'll enjoy it to the full in this big, friendly land of soaring peaks, sunlit valleys and peaceful plains.



Picnics in the Rockies



Pari-mutuel greyhound racing

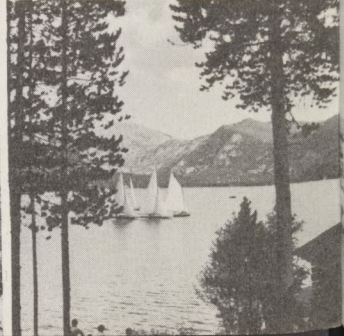
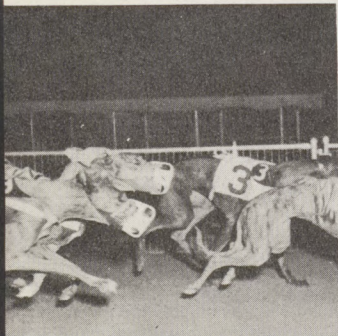
## Spring



All-year swimming pools

Picture country everywhere

Sails high above the sea



## ...the Magic Ingredient

Nowhere else will you find more vacation variety—in any season. The all-year highways that, in Spring and Summer are bordered with wildflowers, in Autumn are framed in aspen gold. Mountain slopes that provide America's finest skiing lure hiker and



Creel-full trout fishing



Riding adventure trails

rider when Colorado sunshine transforms the snow into the clear, swift water of a boulder-leaping trout stream.

Summer



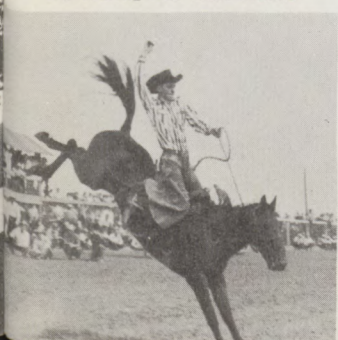
Fall



Winter



Rip-roaring Old West rodeos



Pari-mutuel horse racing



Where the elk roam





Colorado has four distinct seasons, but all have one thing in common—*sunshine*. Five of every six days in Colorado are sunny, the year 'round. Clear, deep blue skies and in-

vigorating mountain air give added zest to every vacation pleasure . . . Spring, Summer Fall and Winter.

# Your Colorado



Be sure to bring your camera!

Wonders of Nature



Springtime in the Rockies

Tall mountains to climb



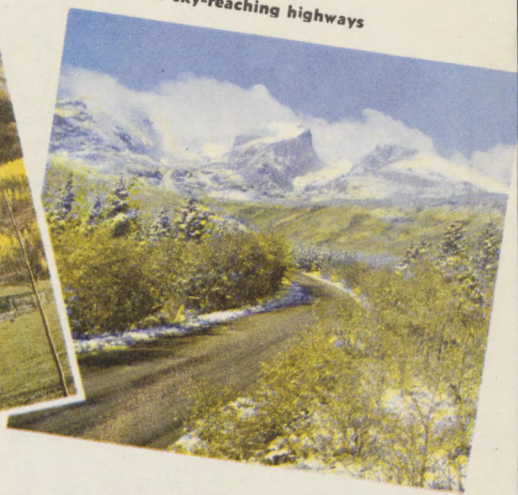
by

Spring Summer  
 Vacation Fall Winter

When the aspens turn to gold



Wide, safe sky-reaching highways



Fast powder snow AND sunshine

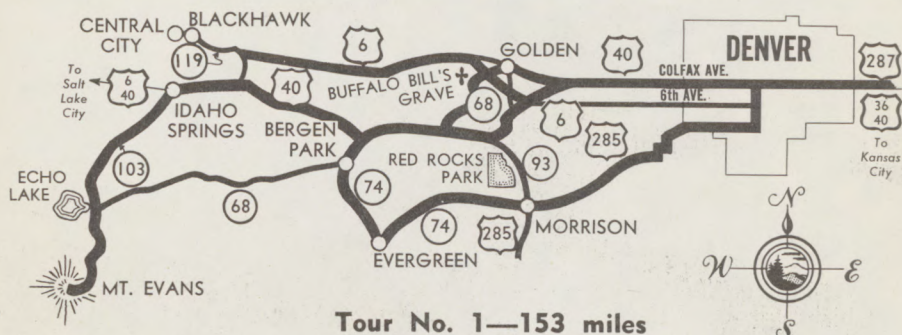


Trout fishing till November





# PROSPECTORS TRAIL



**Tour No. 1—153 miles**

Through the 20,680 acres of Denver Mountain Parks to the 14,260-ft. summit of Mt. Evans over the nation's highest auto highway.

To see Denver Mountain Parks in all their beauty and majesty, follow the storied Prospector's Trail . . . 153 miles of scenic grandeur abundantly interwoven with the colorful history of the Old West.



Foothills are carpeted with wild flowers



Herd of buffalo in their native habitat may be seen from the highway

You're in the land of adventure and romance! Past Golden, the second territorial capital of Colorado, the highway climbs to the top of Lookout Mountain, where you visit the tomb of Buffalo Bill and Pahaska Tepee. You see buffalo in the wild . . . and, rising above the awesome spectacle of peak and canyon, the distant Continental Divide.



Concerts under the stars in Red Rocks open air theatre



10,605-ft. Echo Lake

This is the land of gold! Abandoned mine tunnels yawn beside the highway, hillsides are pocked with prospect holes. Blackhawk, where Gregory made his great strike in '59. Central City, center of "the richest square mile on earth," where the Play Festival in the opera house thrills thousands each summer. Idaho Springs, where George Jackson made the strike that made Colorado—and where you can see, in a little park, a Spanish arastra (ore crusher).

Linger a while in these quaint frontier mining towns before you drive on to lovely Echo Lake, elevation 10,600-ft. Some big trout are pulled out of here. A wide, safe highway now lifts you into the clouds . . . to the



Quaint Central City Opera House  
—home of the annual Play Festival

14,260-ft. summit of Mt. Evans. A laboratory for the study of cosmic rays is situated here, but you'll be looking at a million miles of peaks and valleys, reaching on to the four horizons. Gorgeous wildflowers jewel roadside and mountain slope as you cross Squaw Pass, on the way to the woodland playgrounds at Bergen Park. Some of the flowers you see now are blue pentstemon, cranesbill, cinquefoil, Indian paintbrush.

Note the fine blue spruce in the canyon town of Evergreen. And from Morrison, be sure to take the side trip of less than a mile and visit the Park of the Red Rocks. In the amphitheatre, seating 10,000, are held the annual Easter sunrise service and summer concerts under sparkling stars.

Back in Denver, your speedometer registers 153 trip miles—but into them has been packed happy experiences you'll remember always.

*Additional information, page 47*



**Abandoned gold mine at Idaho Springs**



**Drive to 14,260-ft. summit of Mt. Evans**

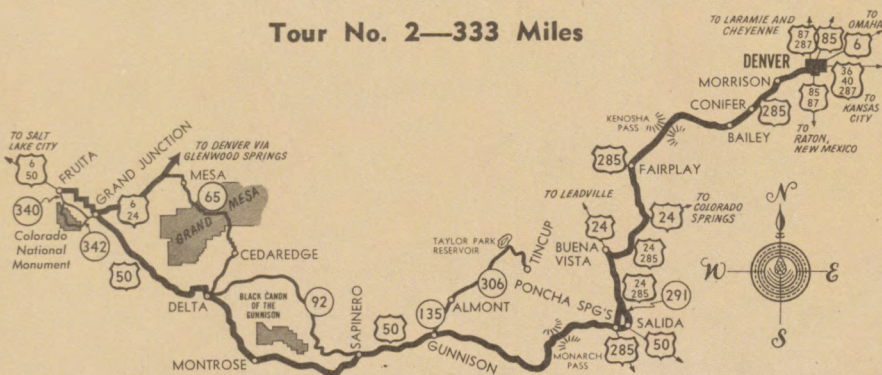


**Tomb of Buffalo Bill Cody  
on Lookout Mountain**

# BLACK CANON of the GUNNISON— GRAND MESA COLORADO NATIONAL MONUMENT



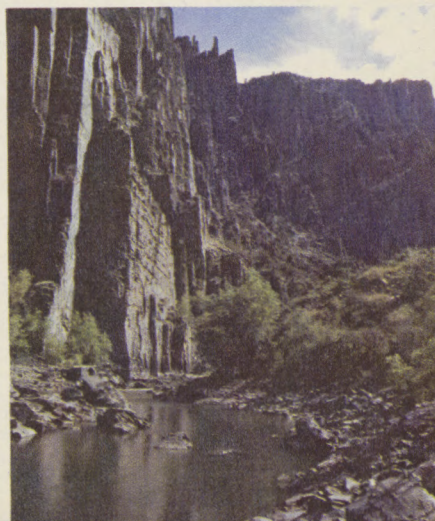
## Tour No. 2—333 Miles



From Denver drive west on Alameda Avenue into the softly folded foothills. Through a gap in the Hogback, the road descends past the Park of the Red Rocks into Turkey Creek Canyon, threaded by the silvery gleam of a boulder-leaping stream. Picnic grounds. Easy mountain climbing. Abundant wildflowers.

The long, smooth curves of the

**Black Canyon of the  
Gunnison River**



highway lift you gradually into an evergreen wonderland of spruce and lodgepole pine. Beyond peaceful valleys the timbered ridges rise skyward, silhouetted against the monumental backdrop of the faraway Continental Divide.

Through the beautiful canyon of the South Platte, over Kenosha Pass to the old mining town of Fairplay. Bordering Pike National Forest, the highway enters Buena Vista. On the west tower the mighty peaks of the Collegiate Range. The Arkansas River is crossed at Poncha Springs, built

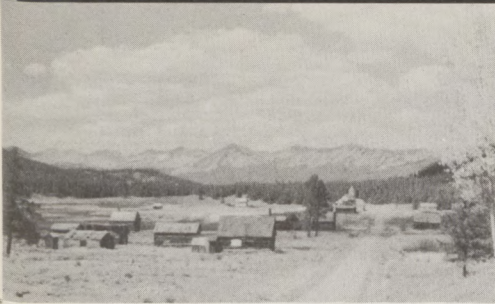


Grand Mesa viewed from Skyway Drive

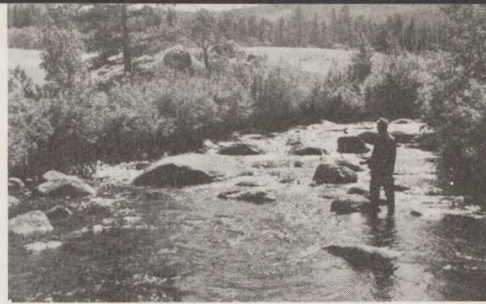
along a mountain slope from which bubble mineral springs. Over 11,512-ft. Monarch Pass you cross the Continental Divide.

With Gunnison as headquarters, break out your fishing tackle and catch a mess of fighting rainbows in the famed trout streams near this friendly town. Within easy driving distance are 750 miles of trout streams, including the celebrated Gunnison, East and Taylor Rivers, and Tomichi, Spring, Cebolla and Cochetopa Creeks.

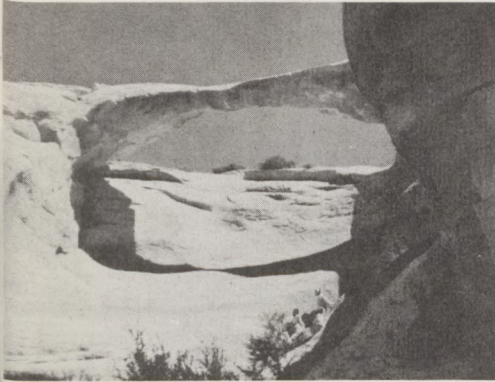
**SIDE TRIP**—From Gunnison to Almont, S 135, thence on S 306 along Taylor River to Taylor Park Reservoir, fine fishing. Visit the ghost town of Tincup, at the foot of the Sawatch Range.



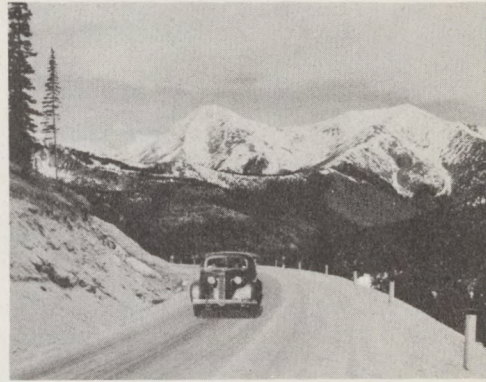
Tincup, ghost mining town, sleeps in memories



Gunnison River is a famed trout stream



Natural bridge in Little Dolores Valley



Glory of the Rockies from Monarch Pass

The highway ascends through a canyon lined with granite spires. To the north rises the high escarpment of Black Mesa. From Sapinero, S 92 follows the old Black Mesa Indian trail, climbing the slopes of Black Mesa in easy stages.

**SIDE TRIP**—The Black Canyon of the Gunnison National Monument is 11 miles off the highway. It includes 10 miles of the most picturesque portion of the 50-mile gorge. The canyon walls rise 3,000 feet at their highest point—one of the most impressive sights in the world.

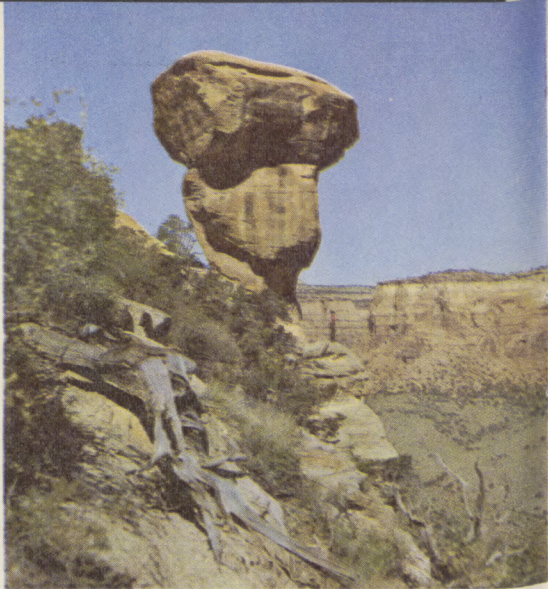


Some of America's finest fruit comes from the Western Slope of Colorado



At Montrose, turn north-westward to Delta, in the heart of Colorado's fruit country. From there to Grand Junction is a beautiful drive along the Gunnison. Orchards are green against the carmine cliffs, some like rows of giant books.

Colorado National Monument is a half-hour's drive west of Grand Junction. The 18,000-acre area is seamed with canyons, filled with fantastic shapes of nature-carved stone. Fossils of 75-ft. long reptiles have been excavated from the great dinosaur beds. Buffalo, deer and elk roam the region.

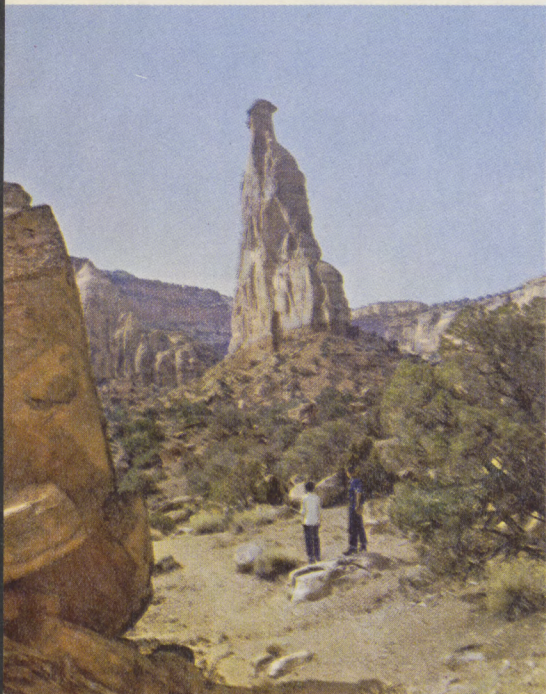


**Mushroom Rock, Colorado National Monument**

**SIDE TRIP**—Grand Mesa, largest plateau in the Rockies. From Cedaredge, continue 16 miles to entrance of Grand Mesa. Or, from Grand Junction on US 24 to Plateau Creek, thence to Mesa. Take S 65 to Grand Mesa. Grand Mesa is 33 square miles in area, has altitude of 10,500 feet. With its 200 lakes, superb scenery, and facilities for outdoor sports, Grand Mesa is a popular playground.

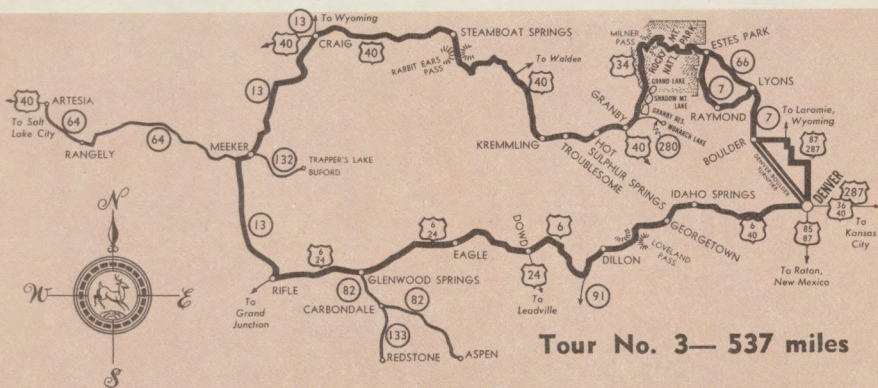
**(See Tour No. 3)**

*Additional information,  
page 47*



**Independence Rock,  
Colorado National Monument**

# NORTHWEST COLORADO



One of the most scenic drives on the North American continent—an unending panorama of soaring peaks and steep-walled canyons, primeval forests and flower-jeweled valleys . . . the roof garden of America!

From Boulder, seat of the University of Colorado, turn north to Lyons, then west along the canon of the South St. Vrain. Pentstemon, bee plant, miner's candlestick and other wildflowers border the singing stream. On the mountain slopes you will catch glimpses of prospect holes, where gold hunters hoped to strike it rich.

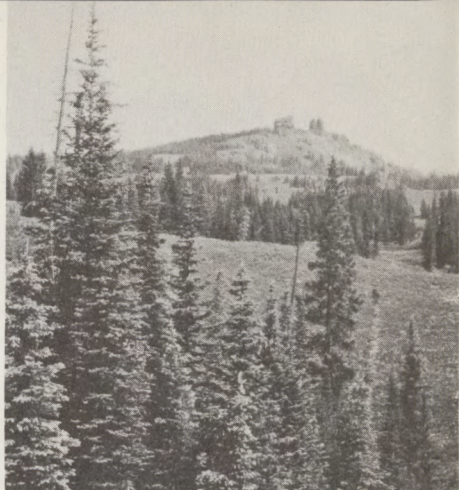


**ALTERNATE ROUTES**—S 66 along the North St. Vrain, past Moose Mountain. US 34 from Greeley and Loveland up the beautiful Big Thompson Canyon. Good trout fishing.

Northwest of Raymonds the road ascends from the basin of the South St. Vrain to the divide, separating this stream from the headwaters of the North St. Vrain. Longs Peak rises before you. Passing Copeland Lake, the highway enters Rocky Mountain National Park at Estes Park Village. (See Tour No. 7.)

Trail Ridge Road, one of the world's finest examples of mountain highway engineering, begins at Estes Park Village. There are so many attractions—so much to see and do—in Rocky Mountain National Park, that you may wish to take several of the side trips. But let's continue on Trail Ridge Road, which follows the ridge tops of mighty mountain ranges—mostly above timberline.

On both sides are magnificent views of mountains, canyons, rivers, valleys and waterfalls, thousands of feet below. From the numerous



The highway passes through Rabbit Ears Pass

Ski in the sun on powder snow!



Spruce-rimmed Trappers Lake



parking spaces you may see deer, elk, bighorn sheep. Ascending to its highest point, 12,183-ft., the highway commands a continuous view of mighty mountains.

Crossing the Continental Divide, the road winds through an evergreen wonderland to Grand Lake, one of the largest in the State. This is a popular recreation area. Annual yacht races are held here in August. Shadow Mountain Lake, good fishing, adjoins Grand Lake.

**SIDE TRIP**—Monarch Lake, S 280. Privately owned. Boating, fishing, cabins. Abundant hiking and riding trails in Arapahoe National Forest.

Hot Sulphur Springs, a resort at the mouth of Byers Canyon, is near some fine fishing streams, far from your everyday world. Follow the canyon, between whose orange sandstone cliffs flows the Colorado River, to Kremmling. Lusty trout in the Troublesome, Big Muddy, and Williams Fork.

Passing through sage-covered hills, with high mountains in the distance, the road climbs Rabbit Ears Pass, descending into the Yampa Valley to Steamboat Springs. The surrounding country contains many lakes and trout streams. Camping grounds, foot and bridle trails in Routt National Forest are within easy reach. Steamboat Springs is noted as a ski area. Its Fall Aspencade is a tour enjoyed by thousands.

The highway parallels the Yampa River, one of the best fishing and hunting areas in the State. Through rolling hills across a sagebrush



Take pack trips into forest primeval



Glenwood Springs—world's largest all-year outdoor hot mineral water swimming pool



Cow country of song and story



**Adventure trails far from your everyday world**

**Mountains rise in splendor beyond aspen gold**

plateau to Craig. A vast broken landscape spreads before you as you drive southeast to Meeker, in beautiful White River Valley, scene of the Meeker Massacre, 1879. Mesas and cliffs glow with color.

**SIDE TRIP**—West along the White River to the Rangely oil fields.

**SIDE TRIP**—Trappers Lake, fishing, camping. S 132 to Buford.

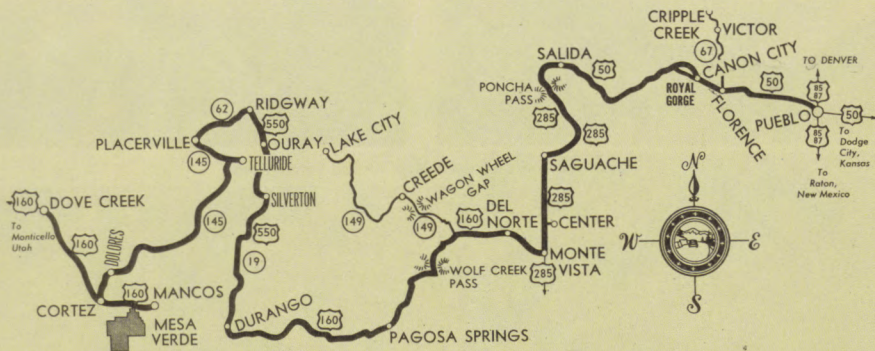
From Meeker south along the Grand Hogback to Rifle are 41 miles of scenic splendor. East to Glenwood Springs, with its famed swimming pool fed by hot and cold sulphur springs.

**SIDE TRIP**—S 82 to Carbondale, S 133 to Redstone resort on the Crystal River and Marble, site of Yule marble quarries.

*Additional information, page 47*



# SAN JUAN COUNTRY



## Tour No. 4—533 miles

On this tour you'll visit many of the picturesque gold towns in Colorado's scenic Southwest.

From the industrial city of Pueblo in the Arkansas Valley take US 50 west across rolling juniper-dotted hills to Canon City.

**SIDE TRIP**—Phantom Canyon road to historic gold mining towns of Victor and Cripple Creek. S 67.

**SIDE TRIP**—Royal Gorge of the Arkansas, more than a thousand feet deep. World's highest suspension bridge.

Follow the fertile Arkansas Valley to Salida in the Sangre de Cristo (Blood of Christ) Mts. South over Poncha Pass on US 285 to Saguache (Ute for "blue earth"), then along the Gunbarrel Road to Monte Vista in the San Luis Valley, garden spot of the State.

The mountains lift towers of green against the deep blue sky. Alongside the road rolls the Rio Grande. Anywhere out there is adventure and enchantment. You climb 10,850-ft. Wolf Creek Pass and reach Pagosa Springs on the lovely San Juan River.



Wagon Wheel Gap looks out on far horizons

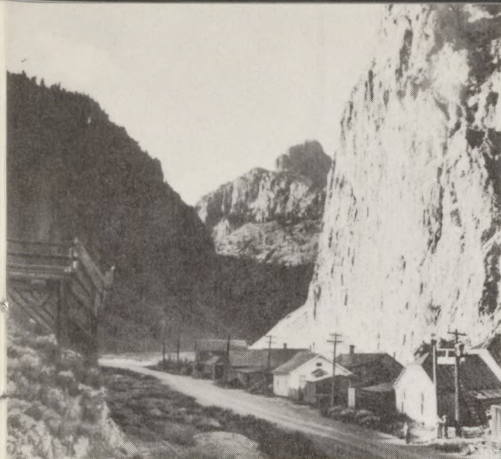


Lusty, fighting rainbow trout await your cast



Peaceful valley in the land of the setting sun





Historic gold mining town of Creede

**SIDE TRIPS**—Creede and Lake City. S 149 passes through Wagon Wheel Gap, a highly covered gorge carpeted with mountain daisies, asters and fragile star flowers. The gulch mining town of Creede, still active, shows you the real West of mining days. . . . "It's day all day in the daytime. And there is no night in Creede." Good fishing. Explore the untouched country south of Rio Grande National Forest, where candy-colored rocks are fantastically sculptured among sandstone spires.



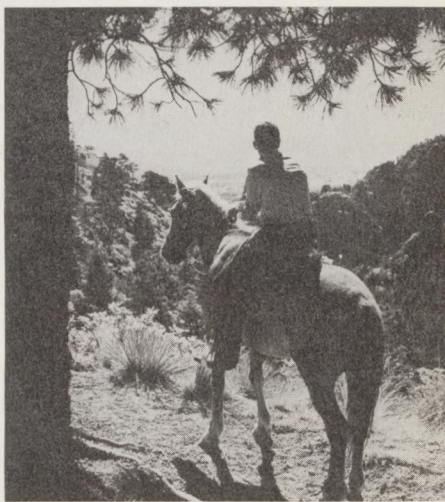
Lake City, storied mining town, elevation 8500 ft., is reached over Slumgullion Pass. Wonderful trout fishing in Lake San Cristobal on the Continental Divide, Crystal Lake, and numerous creeks.

From Durango drive north on US 550 to the picturesque mining town of Silverton, center of the San Juan mining district. To Ouray over the Million Dollar Highway (so called because of gold-bearing gravel with which it is surfaced) are 23 miles of unforgettable mountain and canyon splendor. Ouray is surrounded by rugged heights. Nearby is the Camp Bird gold mine, still a rich producer.

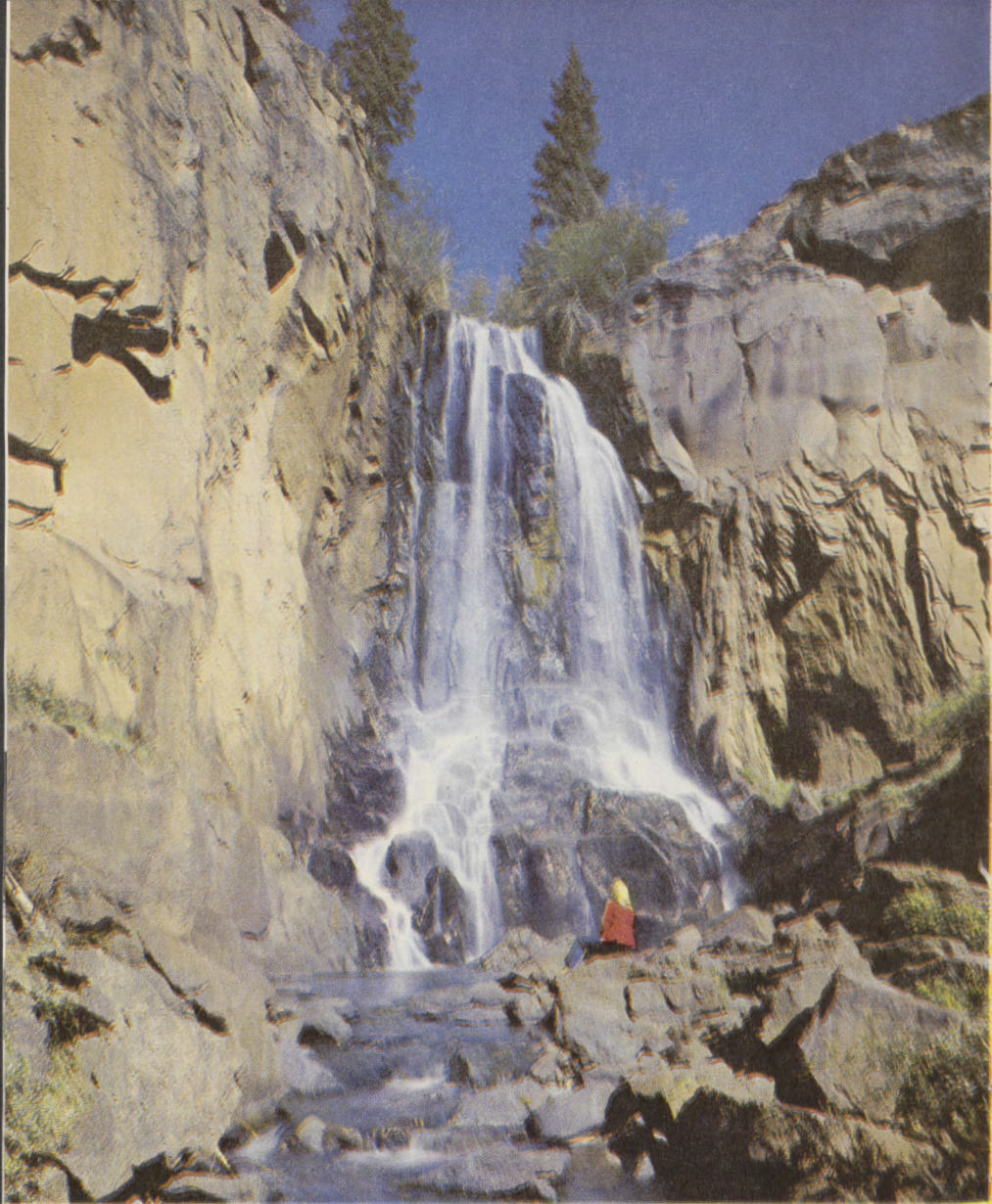
North to Ridgway, through cattle and sheep country, to Placerville, thence to Telluride, Colorado's third producer of gold, silver, lead, zinc. On three sides tower 14,000-ft. peaks, 75 miles of trout fishing. Southwest from Telluride over S 145



Gold king's mansion of long ago



Country you'll always remember



**South Clear Creek Fall, between Creede and Lake City**

takes you through the majestic splendor of the Rio Dolores Valley. Many abandoned mines. Once the hideout of hard-riding outlaws. In Cortez, in Montezuma Valley, may be seen real cowboys, and Indians dressed in brilliant velveteens and

calicoes, aglitter with silver and turquoise jewelry.

Near Mancos is the junction with the highway to Mesa Verde National Park. (See Tour No. 10.)

*Additional information, page 47*

# NORTH PARK



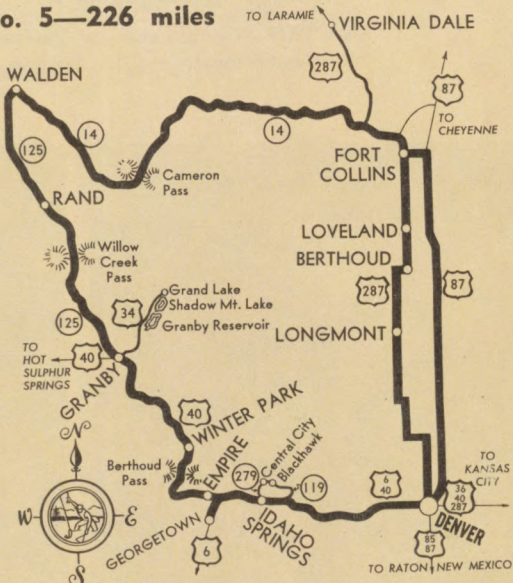
## Tour No. 5—226 miles

TO LARAMIE VIRGINIA DALE

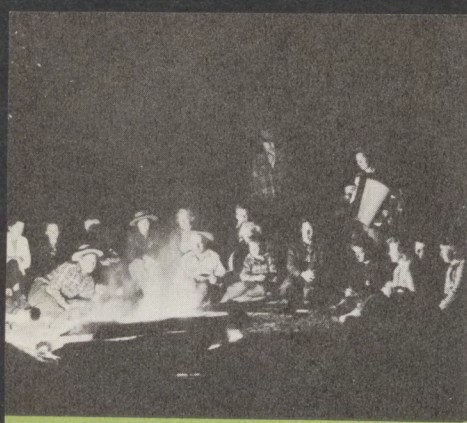
One-day circle trip through virgin mountain country rich in scenic beauty and historical lore.

From Denver north on US 287 past fertile irrigated farmlands and broken hill country to Fort Collins.

**SIDE TRIP**—Virginia Dale stagecoach station, original frame building of Overland Mail. About 30 miles northwest on US 287.







Evening campfire among the silent hills



Wild life abounds in the virgin forests

Leave Fort Collins on S 14, enter Cache La Poudre Canyon (powder cache of French fur trappers). One of the longest canyons in the State, it traverses Roosevelt National Forest. Over 10,265-ft. Cameron Pass in the Medicine Bow Range, the highway follows the crystal Michigan River to Walden. Excellent trout fishing in the Poudre, Michigan, and Illinois rivers. The cool, green, sunlit forests are heavy with the fragrance of pine and spruce. Cattle range upon the hills and grass-deep valleys.

Follow S 125 to Rand, thence over Willow Creek Pass to Granby, center of mountain lettuce production.

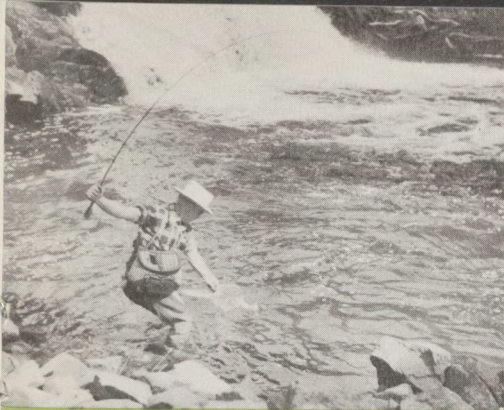
**SIDE TRIP**—Grand Lake and Shadow Mt. Lake, famed pleasure resorts, 15 miles northeast on S 16. Boating, fishing, riding, picnicking.

Falls of the Cache la Poudre River



Berthoud ski lift operates also in summer





Swift snow-fed trout streams, crystal-clear



Virginia Dale stagecoach station

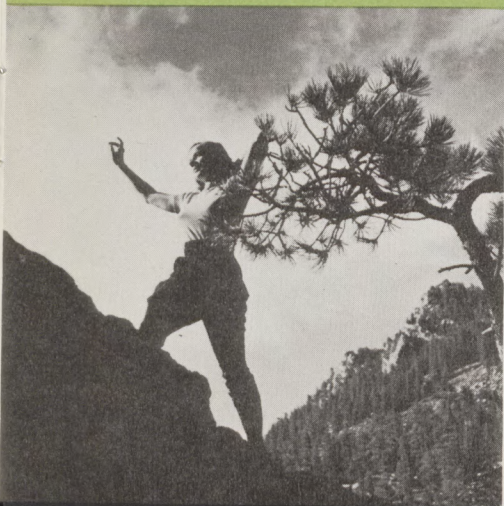
Past the great Winter Park ski area, crossing the Continental Divide over 11,314-ft. Berthoud Pass. Chair lift operating in summer. Then through dark green spruce forests down to Idaho Springs, you look out upon sky-vistas of alpine grandeur.

**SIDE TRIPS**—Central City up Virginia Canyon, 10 miles. Georgetown, 14 miles south. Both are picturesque mining towns of great interest.

From Idaho Springs to Denver are 41 miles of mountain majesty and friendly foothills, which level out into the beautiful valley of the Platte.

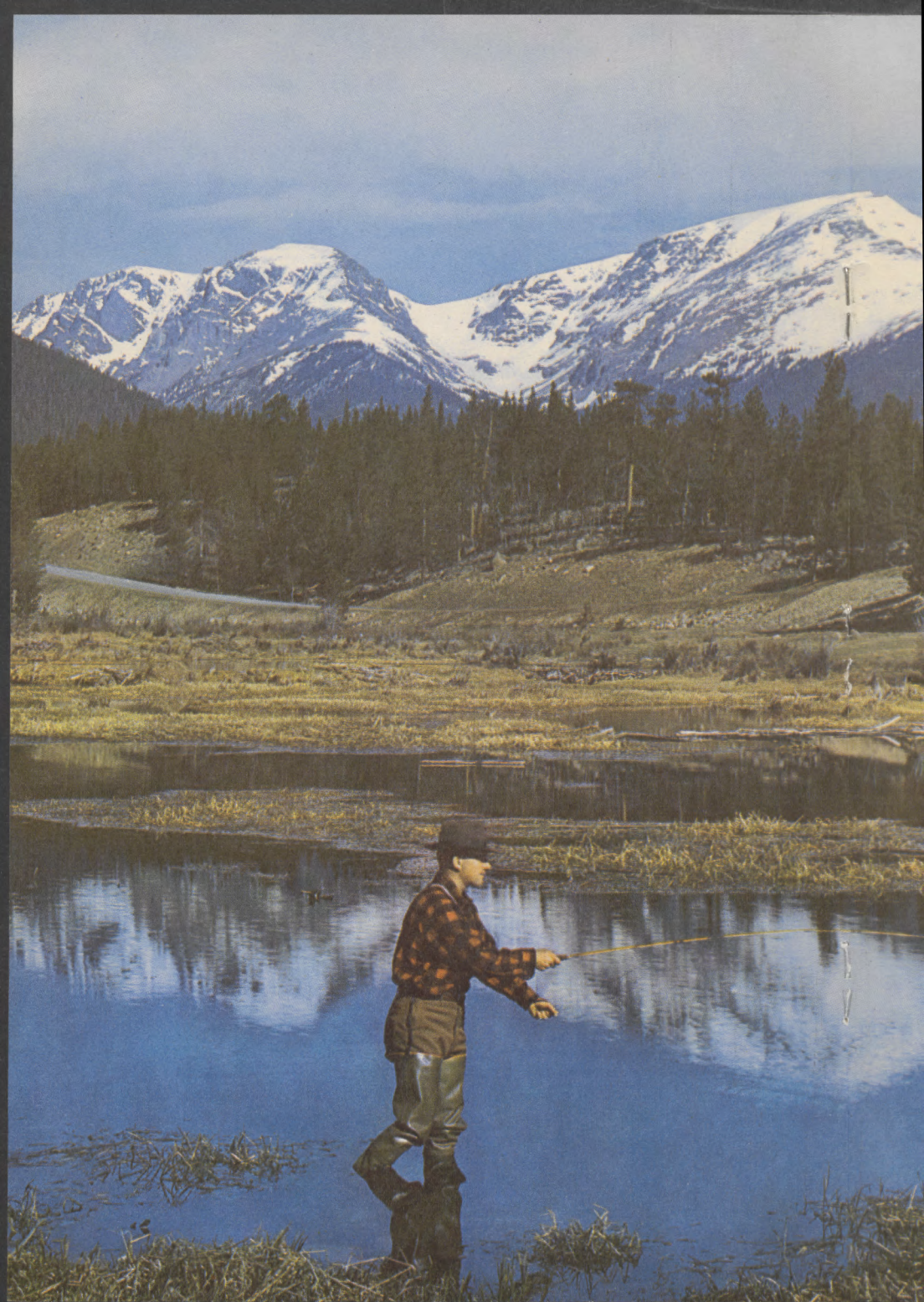
*Additional information, page 47*

Outdoor fun for all the family



Near Berthoud Pass and the Continental Divide







# SOUTHERN PLAINS-ARKANSAS VALLEY



## Tour No. 6—440 miles

Wide green valleys, rock-ribbed gulches and pine-dark slopes march with you on the trip south from Denver to Colorado Springs—the ruggedly beautiful landscape dominated by Pikes Peak.

From Colorado Springs continue on US 85 to Pueblo, home of the great steel fabricating plant of Colorado Fuel & Iron Corp. In early summer the greasewood flats are colored with brilliant reds and yellows of cholla cactus.



Stately plumes of yucca



A pair of little buckaroos





Down at the old corral



Ride 'em, cowboy!

Drive east on US 50 into the fertile valley of the Arkansas. The black acres, once rutted by wagon caravans of the Santa Fe Trail, produce watermelons, cantaloupes, sugar beets, onions, flower and vegetable seeds.

Rocky Ford melons are world-famed. In La Junta visit the Fort

**John Martin Reservoir—bathing,  
boating, fishing**



Bent Museum—fossils, Indian artifacts, old newspapers and documents, scale model of fort.

The highway passes rich fields of alfalfa, sugar beets, corn and melons, reaching historic Las Animas, once a great cattle and buffalo meat shipping center. Here Pike first sighted the peak that bears his name. Visit nearby John Martin reservoir. Fine warm-water fishing, boating.

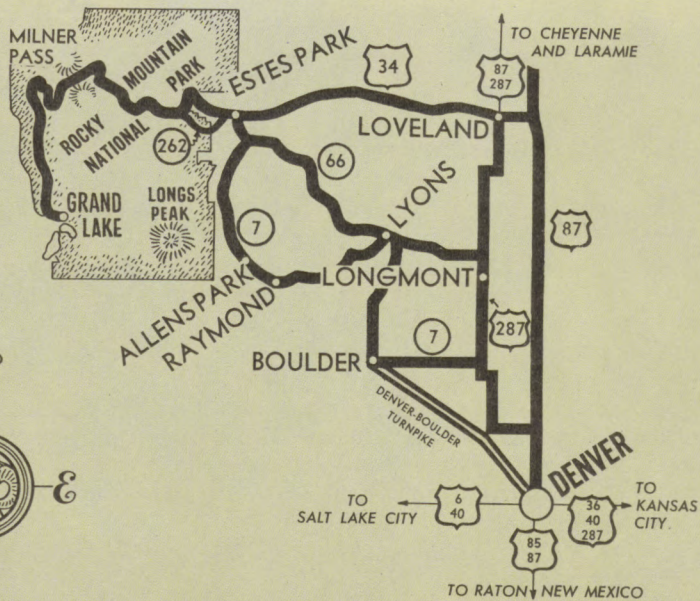
From Lamar, drive north on US 287 to Eads. In summer the prairies bloom with larkspur, yucca and devil's pincushion.

Some 15 miles east of Eads is a historical marker of the Sand Creek Battle. This was the country of the Kiowas, Arapahoes and Southern Cheyennes—buffalo land. Now, as then, it is a land of far horizons.

From Kit Carson the highway follows the general direction of the Smoky Hill Trail to Denver. You can still see grass-grown ruts of the old trail, cut deep by wheels of wagons and stagecoaches and by hooves of horses and oxen. Cheyenne Wells, 42 miles east of Kit Carson, dates from the 1860s, as a station on the Butterfield stage route.

*Additional information, page 47*

# ROCKY MOUNTAIN NATIONAL PARK





Still, blue waters of Loch Vale

### Tour No. 7

**R**ocky Mountain National Park is 405 square miles of mountain splendor, glacial lakes, rugged canyons and flower-bright upland meadows. This complete vacationland is reached, from Denver, over US 287 through Boulder, Longmont, or Loveland.

Lying on both sides of the Continental Divide, Rocky Mountain National Park contains 65 peaks over 10,000 ft. high and 14 rising more than 13,000-ft. Dense forest, its character changing with the altitude,





covers much of the park. Here you'll see deer, elk, bighorn sheep . . . chipmunks, woodchucks, perhaps a beaver. More than 700 kinds of wildflowers and 283 species of birds have been noted. In the fantastic world above timberline you can see forget-me-nots not much larger than pinheads, and can walk on the tops of trees that were growing when Columbus discovered America.

Crystal streams, beaver ponds and sapphire lakes provide good trout fishing. There are woody trails to hike and ride, tall mountains



**World-famous Trail Ridge Road**



to climb, flowery glades that invite you to stretch out on the cool grass and watch cloud ships sail above the ridge top.

Numerous tours of indescribable beauty interlace this great natural wonderland: From Estes Park Village through Horseshoe Park, over Milner Pass and on sky-high Trail Ridge

Road; from the village through Moraine Park to mountain-locked Bear Lake on the Bear Lake Road; the Fall River Road past beautiful Hanging Valley and Chasm Falls.

Mountain lodges and hotels in Rocky Mountain National Park are noted for their picturesque charm and Western hospitality. At the borders of cool, green pine forests and along melted-snow creeks, rustic cottages invite rest and relaxation. And there are camp grounds, where aspen leaves dance in the sun.



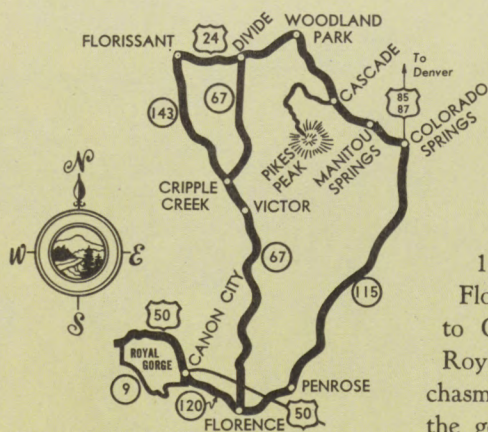
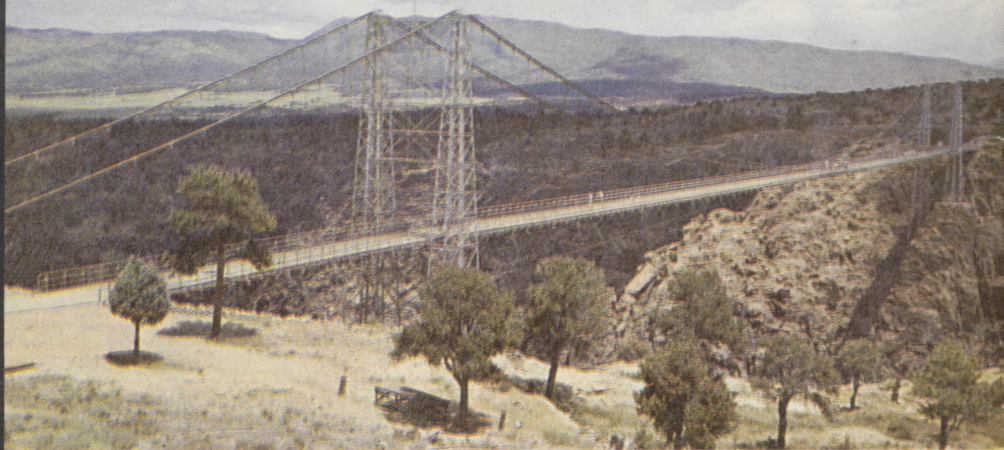
Grand Lake from a mountain top

Whether you stay a day, a week, or all summer, you'll always have pleasant memories of your trip to Rocky Mountain National Park—the variety vacationland atop the Colorado Rockies.

*Additional information, page 47*



# ROYAL GORGE

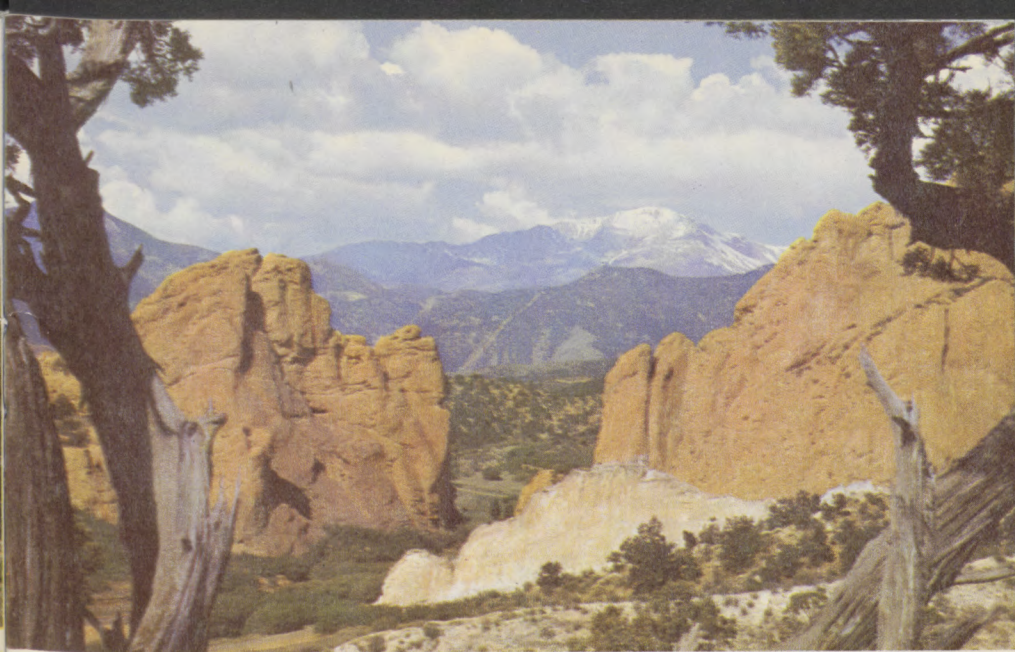


## Tour No. 8—142 miles

**A** one-day trip of scenic grandeur.

From Colorado Springs take S 115 across juniper-dotted foothills to Florence, in the Arkansas Valley, thence to Canon City. Nearby is the famed Royal Gorge of the Arkansas, a mighty chasm gouged in solid granite. Spanning the gorge, 1053 feet above the river, is the world's highest suspension bridge, total length 1260 feet. An incline railway, 1550 feet long, descends at a 45° angle to the bottom of the canyon. Picnic and camp sites. Linger here, enjoying the canyon's rugged beauty. Return to Canon City via the Grape Creek and Temple Canyon road, or the scenic Tunnel Drive.

**SIDE TRIP**—DeWeese Reservoir, good fishing. Take S 143 out of Canon City, crossing the Shadow Mountains to historic Westcliffe. Return on S 69 through Wet Mountain Valley.



**Pikes Peak through Gateway of Garden of the Gods**

North on 67 over picturesque Phantom Canyon road to Victor and Cripple Creek, whose gold mines have produced some 4 billion dollars. Many of the mines are still productive. On the way to Florissant, visit the Petrified Forest. With the glory of Pikes Peak ever in view, you pass the red forested hills of Woodland Park, Green Mountain Falls and enter Ute Pass, formerly a wagon road into the mining regions to the west.

Garden of the Gods, a short distance off the highway, is a scenic region of grotesque masses of red sandstone, from which Pikes Peak is viewed to good advantage. The curio shops at Manitou Springs are noted for their quaintness.

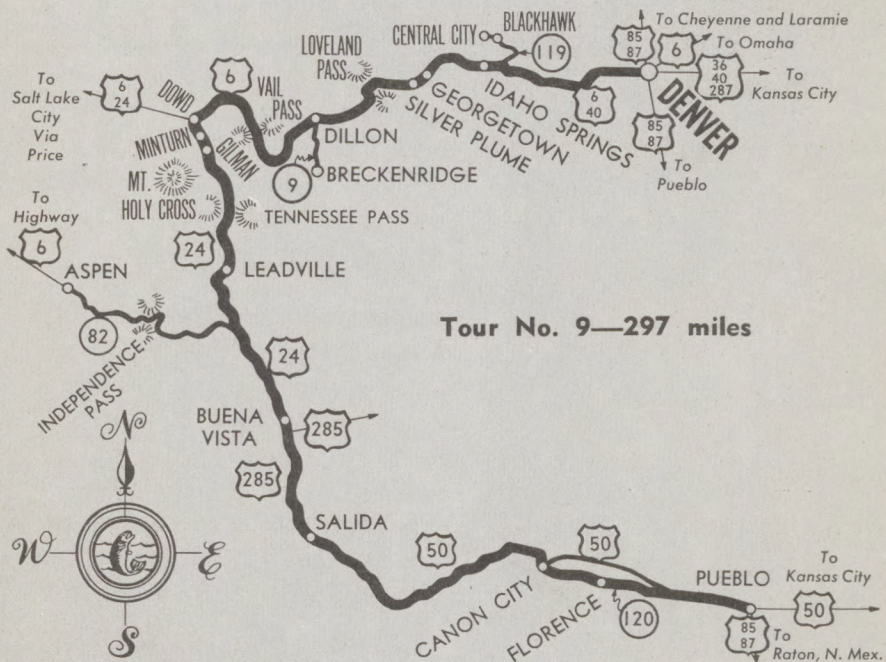
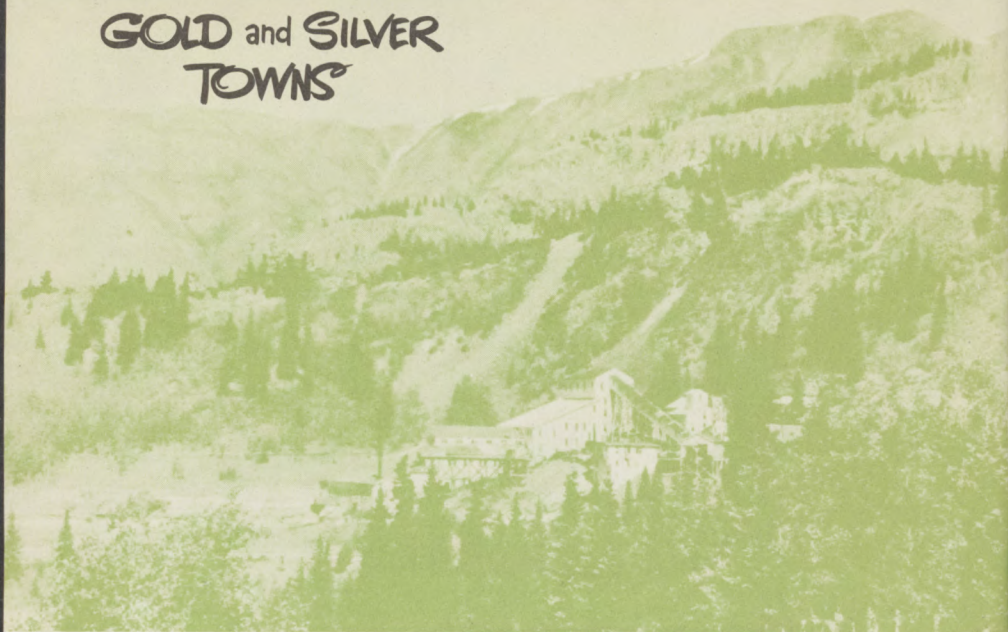
Back in Colorado Springs, drive to the 14,110-ft. summit of Pikes Peak. Many other tours of great historic interest originate in this lovely city.

*Additional information, page 47*



**Ute Indians revisit the "Old Red Land"  
where once they hunted buffalo**

# GOLD and SILVER TOWNS

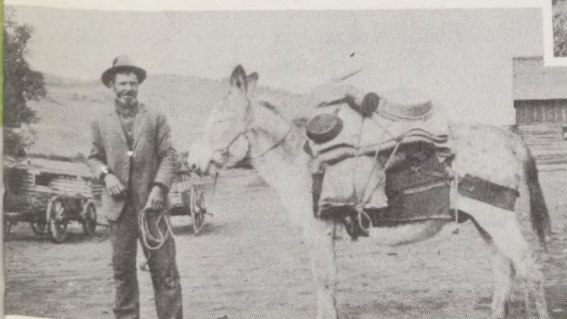


**H**ere they dug the gold!

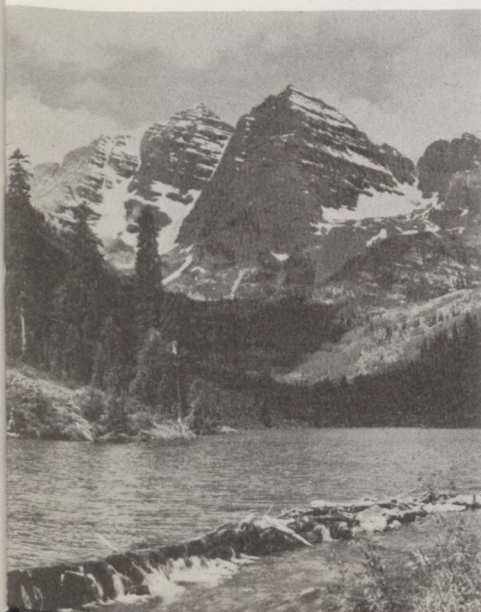
From Denver drive west on US 40 into the cool green wonderland of the Rockies. Nearing Idaho Springs, the highway follows Clear Creek. The canyon walls are hung with superstructures of mine tunnels, punctured with prospect holes. Back in the silent hills, lonely prospectors still search for gold. A boulder marks the site of the first major gold strike in Colorado, by George Jackson, in 1859.



**A lonely shepherd watches over his flock**



**Still hoping to strike it rich**  
**Beautiful Maroon Bells Peaks, near Aspen**



**SIDE TRIP**—Blackhawk and Central City, once "the richest square mile on earth." Turn right on S 119, about 15 miles.

Linger awhile in old Georgetown, walled in by high mountains. Visit the Hotel de Paris, storied hostelry of boom mining days. Following the sun-dappled creek, the highway climbs to Silver Plume, one-time silver camp. Then over 11,992-ft. Loveland Pass into a world of soaring peaks and glacier-gouged canyons.

**SIDE TRIP**—At Dillon, on the Blue River, turn south over the old stage road to Breckenridge, for many years a rich placer mining field. Get out and take a stroll on the board sidewalks. See the livery stable, blacksmith shop, and other long-silent buildings, weathered and gray.

From Dillon through White River National Forest to Dowd, where US 24 takes you past the

sublime Mount of the Holy Cross, over 10,424-ft. Tennessee Pass to Leadville, where Tabor struck it rich. Places of interest: the restored Healy House, Hotel Vendome, Matchless mine of Baby Doe Tabor, Climax molybdenum mines.

South along the Arkansas to Buena Vista and Salida is a top-o'-the-world drive of scenic splendor.

**SIDE TRIP**—Aspen, over 12,095-ft. Independence Pass. Turn west on S 82 at Twin Lakes. This silver mining town has become an American Shangri-la. An internationally famed ski resort, it has the world's longest chair lift, operating also in summer. While in Aspen, visit the picturesque ghost town of Ashcroft. Catch big rainbow trout in Maroon Creek and Roaring Fork.

From Salida take US 50 to Canon City and Pueblo.

*Additional information, page 47*

**Mount of the Holy Cross—a miracle in granite**

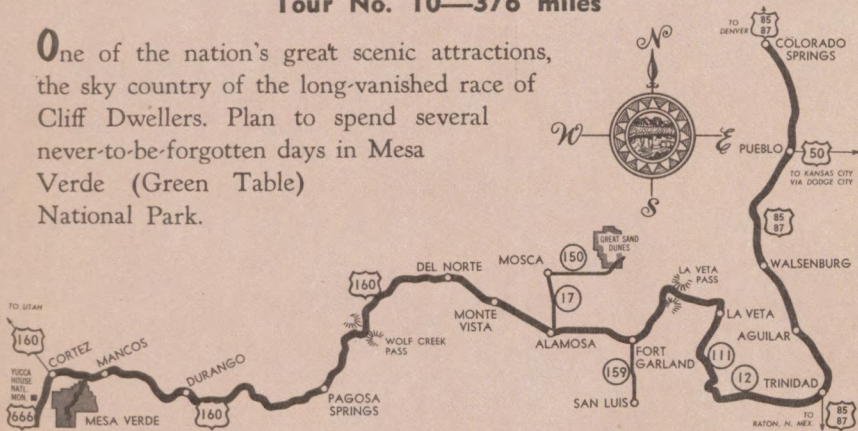


# MESA VERDE NATIONAL PARK



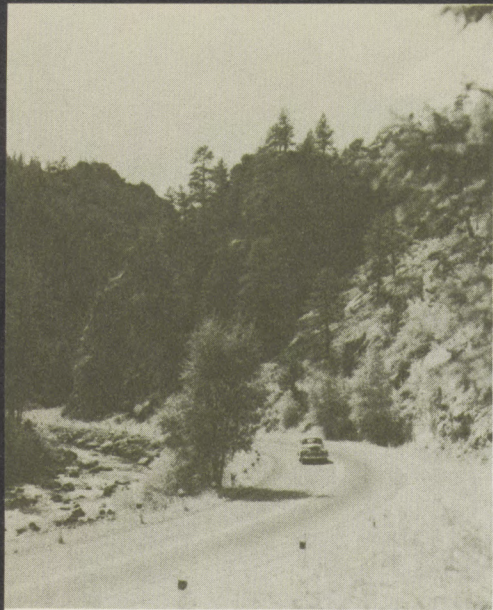
## Tour No. 10—376 miles

One of the nation's great scenic attractions, the sky country of the long-vanished race of Cliff Dwellers. Plan to spend several never-to-be-forgotten days in Mesa Verde (Green Table) National Park.



From Colorado Springs on US 85 through Pueblo to Walsenburg in the colorful Spanish Peaks country. Continue south to picturesque Trinidad, then through pinon-clad hills over La Veta Pass, US 160, to





Splendid highways through the majestic beauty of the mountains



Square Tower House, as it was centuries ago

Fort Garland. Take time to visit this frontier army post, once commanded by Col. Kit Carson, which is in process of restoration by the Colorado State Historical Society. You'll also find the museum highly interesting.

**SIDE TRIP**—San Luis, oldest town in Colorado, 16 miles south on S 159. See the **vega**, the adobe buildings reminiscent of days gone by.

**SIDE TRIP**—Great Sand Dunes National Monument. From Alamosa on S 17 to Mosca, thence on S 150. In an elbow of the high Sangre de Cristos, a vast expanse of pure sand—46,034 acres—rises in knife-edged slopes and peaks to a height of 1000 feet. Many legends are told of this mysterious sea of sand. The nearby mountains are a rich hunting ground for Indian artifacts.

Alamosa, Monte Vista, Del Norte lie in beautiful San Luis Valley.

Besides recreational attractions, the valley produces a large part of America's finest potatoes and onions.

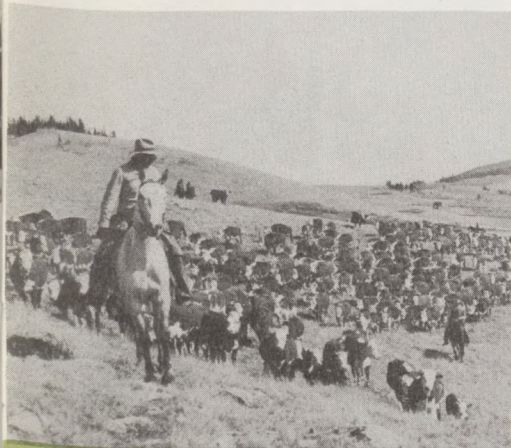
Over 10,850-ft. Wolf Creek Pass to Pagosa Springs is a delightful drive through San Juan Forest. The country at the head of Piedra River, crossed beyond Pagosa Springs, has been set aside as a primitive area.

It is popular for pack trips.



Durango is virtually surrounded by streams and lakes in which there is good trout fishing. The colorful Spanish Trails Fiesta and Rodeo, held here each August, makes you think you're in a different world.

Near Mancos begins the gradual climb through pinon forests to Mesa Verde. The mesa rises a sheer 2000 feet from the floor of Montezuma Valley. It is 8 miles wide, 15 miles long, cut by some 27 canyons. In the



The Old West still lives—America's last frontier



Ride the back country, unchanged since the days of the red man

walls of many of the canyons are the cliff dwellings, exactly as they were when deserted in the 13th Century. Twice daily the National Park Service conducts tours, vacationists using their cars.

The museum, with numerous dioramas, gives a complete picture of the life of Basket Makers and Cliff Dwellers. Every night, around a campfire of fragrant pinon, Utes or Navahos perform native cere-



Fort Garland,  
once commanded by Kit Carson

monial dances against a backdrop of mountain and canyon unchanged since time began.

Truly, Mesa Verde takes you out of this world. You'll love the deep peace of the silent places. And at pinon-scented dusk, with the mesa awash in sunset's gold and crimson, you'll feel a closer kinship with this wonderful land of ours.



**Great Sand Dunes National Monument**

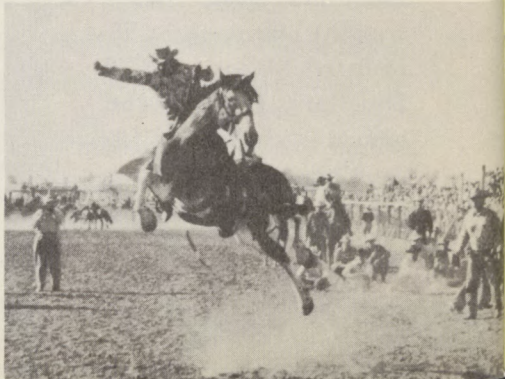
**SIDE TRIPS**—From Cortez, visit Cliff Dweller ruins at Yucca House and Hovenweep, both national monuments of unusual interest.

*Additional Information, Page 47*

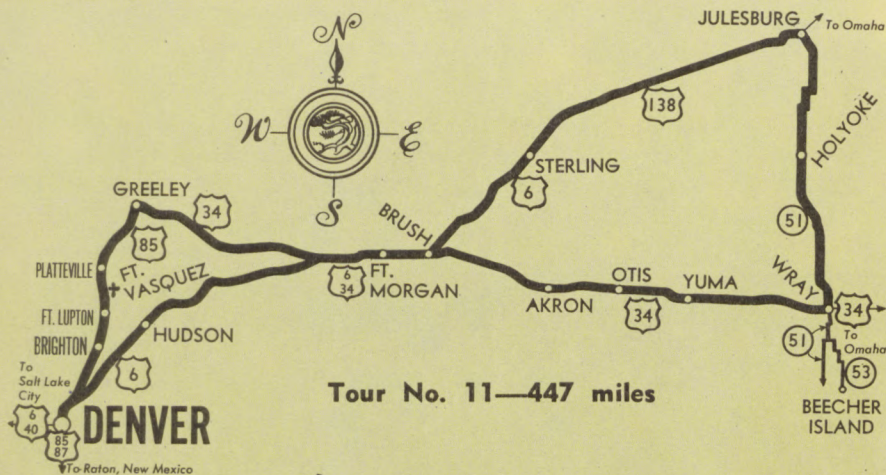
**Dudette rides her own cow pony**



**Colorful rodeos and fiestas**

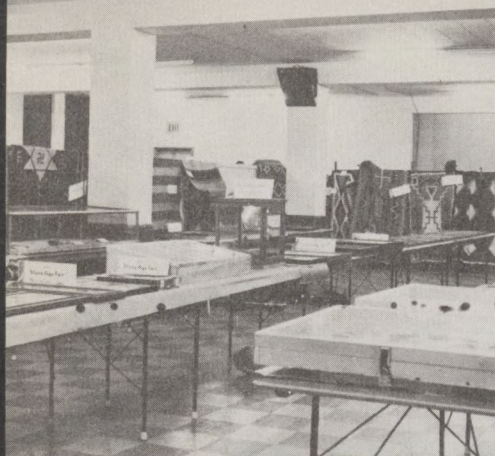


# NORTHERN PLAINS



**M**ore than a third of Colorado is High Plains. This one-day trip traverses the northern part of the interesting Plains region.

Leave Denver on US 6. The tall blue sky bends over a vast sweep of land, much of it unchanged since warmed by Arapaho tepee fires. In spring and early summer the carpet of native grasses is bright with blos-



The annual Stone Age Fair is but one of the interesting attractions



Pheasants and ducks provide good shooting

soms of red mallow, sand lilies, larkspur and purple gentian. Creamy, pendant bells of yucca march in masses up rocky slopes.

Fort Morgan, a military post during the gold rush, lies in a fertile sugar beet region. Pioneers, crossing the Plains to Denver, first saw the Rockies about here. East on State 34 to Wray, you'll see jackrabbits and prairie dogs, perhaps coyotes and antelopes. The bigness of the country will envelop you.

**SIDE TRIP**—Beecher Island Battleground, 16 miles south on S 53. Here a force of 50 soldiers and scouts under Col. Geo. A. Forsythe fought off an attack by a large number of Cheyennes under Chief Roman Nose. The desperate battle lasted a week.

Continue north over the broad, level prairies to Julesburg, in a bend of the South Platte. Trading center of a large agricultural region, Julesburg was a division point on the Overland Mail. Here occurred the celebrated fight between Jules Reni, after



Sand lilies, larkspur and other wild flowers color the broad prairies



Northern Colorado is one of the nation's largest producers of sugar beets

whom the town was named, and Jack Slade. Buffalo Bill Cody rode Pony Express through here.

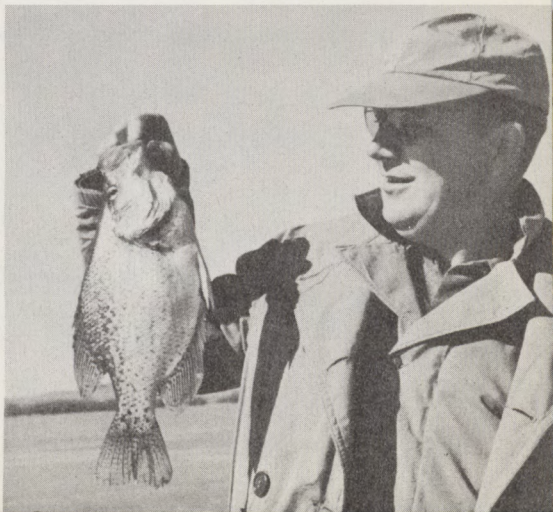
The highway follows the Overland Trail along the South Platte through rolling sage-scented hills, once the habitat of the buffalo and the Indian. Herds of antelope and cattle may be seen grazing together.

From Brush to Greeley, the route traverses the South Platte Valley, a fertile sugar beet and alfalfa region. The attractive city of Greeley, which began as the Union Colony in 1869, was conceived by Horace Greeley. Visit the Meeker Museum, which contains relics of the original colony.

South on US 85 through irrigated farm lands devoted mostly to the production of sugar beets. Fort Vasquez is a reconstruction of the original post burned by Indians in 1842. It is worth your while to visit this adobe fort. Return to Denver through a peaceful countryside framed in the splendor of the Rockies.

*Additional information, page 47*

**Lake fishing yields bass, perch and big crappies like this**



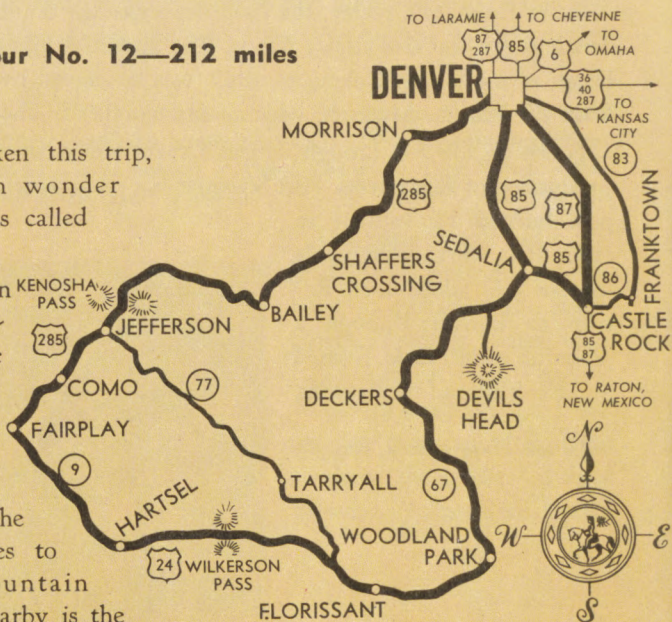
# SOUTH PARK



## Tour No. 12—212 miles

When you've taken this trip, you'll never again wonder why Colorado is called "colorful."

From Denver, on US285, head southwest across the rolling foothills to Morrison, at the mouth of Bear Creek Canyon, and one of the principal entrances to the Denver Mountain Parks System. Nearby is the Park of the Red Rocks, where fantastic



formations of red sandstone—once sea bottom—pitch skyward through masses of evergreens. The amphitheatre here seats 10,000.

The highway ascends Turkey Creek Canyon, winding along pine-dark slopes beside the hurrying stream, where there are charming picnic spots. At the end of the canyon is Shaffers Crossing. The old Denver-Leadville Stage Line forded Elk Creek here; traces of the road can be seen at the bottom of the ravine.

Climbing the canyon of the South Platte, where there's good fishing, the road enters Kenosha Pass, elev. 10,001-ft., the divide between the North and South Forks of the South Platte. The treeless, almost level expanse of South Park, rimmed with snow-capped mountains, stretches away 40 miles to the west and south. Innumerable streams weave a network of silver through green hay lands. This vast basin was once buffalo range, where Utes and fur trappers came to "make meat." Because salt was found here, French trappers named the park Bayou Salado.

**SIDE TRIP**—From Jefferson, S 77 parallels the Tarryall Mts., where the State Game & Fish Dept. maintains a band of bighorn sheep. Visit the sites of the ghost towns, Tarryall and Hamilton. Nearby is Como, interesting old railroad town.

From the historic mining town of Fairplay, where old-time prospectors may still be seen, take S 9 to Hartsel. To the south the Sangre de Cristos rise in purple splendor. Thence east over Wilkerson Pass to Woodland

Riding under a tall blue Colorado sky



HA

TO  
NSAS  
ITY

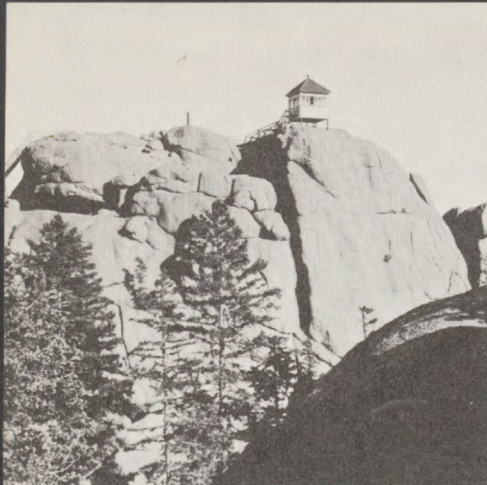
33

FRANKTOWN  
CASTLE  
ROCK

ON,  
EXICO

8





See the world of peak and canyon from Devils Head fire lookout station



Bighorn sheep in the Tarryall Mountains



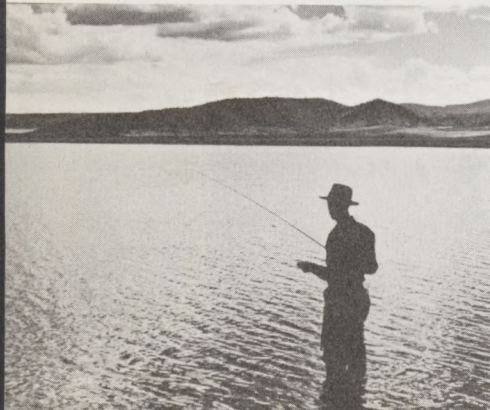
Park. This is a splendid, forested valley, rich in wildflowers. On the south is Pikes Peak, on the east the Front Range.

Turn north on S 67 to Deckers, on the Platte, a favored fishing resort. You'll find here the peace of the silent places. Through rugged Jarre Canyon to Sedalia. Creek bottoms hereabouts were used as camping grounds of the Arapaho Indians.

**SIDE TRIP**—Devils Head, 10 miles off the Rampart Range Road, a huge mass of rock on which sits a Forest Service fire lookout station. Ladders lead up the face of the rock, which is reached over a delightful hiking trail through the aspens. Picnic grounds.

Return to Denver over US 85, or drive south to Castle Rock and take S86 and S83 through broken hill country and lovely Cherry Creek Valley.

Uncrowded fishing spots. This is Antero Reservoir



Over Kenosha Pass into the serene beauty of South Park



## Sources of Additional Information for Your Colorado Vacation

### No. 1—PROSPECTORS TRAIL

Arvada C. of C.  
Aurora C. of C.  
Blackhawk Gilpin County  
C. of C.  
Central City C. of C.  
Denver Convention and  
Visitors Bureau  
Derby South Adams County  
Businessmen's Assn.  
Englewood C. of C.  
Evergreen Community Group  
Golden C. of C.  
Idaho Springs C. of C.  
Lakewood C. of C.  
Littleton C. of C.  
Wheatridge Jefferson County  
C. of C.

### No. 2—BLACK CANYON- GRAND MESA-COLORADO NATIONAL MONUMENT

Buena Vista C. of C.  
Cedaredge Lions Club  
Clifton Lions Club  
DeBeque C. of C.  
Delta C. of C.  
Denver Convention and  
Visitors Bureau  
Fairplay C. of C.  
Fruita C. of C.  
Grand Junction C. of C.  
Gunnison C. of C.  
Montrose C. of C.  
Palisade Lions Club  
Paonia C. of C.  
Salida C. of C.

### No. 3—NORTHWEST COLORADO

Artesia C. of C.  
Aspen C. of C.  
Boulder C. of C.  
Carbondale C. of C.  
Craig C. of C.  
Denver Convention and  
Visitors Bureau  
Estes Park C. of C.  
Georgetown Civic Association  
Glenwood Springs C. of C.  
Granby C. of C.  
Grand Lake C. of C.  
Hayden Lions Club  
Hot Sulphur Springs C. of C.  
Idaho Springs C. of C.  
Lyons C. of C.  
Lyons S. St. Vrain Association  
Meeker C. of C.  
Nederland Lions Club  
Oak Creek C. of C.  
Rangely C. of C.  
Rifle C. of C.  
Rocky Mountain Natl. Park  
Steamboat Springs C. of C.

### No. 4—SAN JUAN COUNTRY

Canon City C. of C.  
Center C. of C.  
Cortez C. of C.  
Creede C. of C.  
Cripple Creek Junior C. of C.  
Del Norte C. of C.  
Dolores C. of C.  
Dove Creek C. of C.  
Durango C. of C.  
Hinsdale County C. of C.  
Mancos C. of C.  
Mesa Verde National Park  
Monte Vista Commercial Club  
Ouray C. of C.  
Pagosa Springs C. of C.  
Pueblo C. of C.  
Saguache C. of C.  
Salida C. of C.

### No. 5—NORTH PARK

Berthoud C. of C.  
Blackhawk Gilpin County  
C. of C.  
Central City C. of C.  
Denver Convention and  
Visitors Bureau  
Ft. Collins C. of C.  
Georgetown Civic Association  
Granby C. of C.  
Grand Lake C. of C.  
Idaho Springs C. of C.  
Longmont C. of C.  
Loveland C. of C.  
Silver Plume C. of C.  
Wellington Commercial Club

### No. 6—SOUTHERN PLAINS- ARKANSAS VALLEY

Arriba Lions Club  
Burlington C. of C.  
Byers Commercial Association  
Calhan Lions Club  
Castle Rock Lions Club  
Cheyenne Wells Lions Club  
Colorado Springs C. of C.  
Denver C. & V. B.  
Eads C. of C.  
Elizabeth C. of C.  
Farmers Union Local No. 35  
Idney Springs  
Flagler Lions Club  
Fowler C. of C.  
Granada Promotion Club  
Holly Commercial Club  
Hugo Lions Club  
Kit Carson C. of C.  
La Junta C. of C.  
Lamar C. of C.  
Las Animas C. of C.  
Limon C. of C.  
Manzanola Farmers Ed. and  
Co-op Union  
Ordway C. of C.  
Pritchett C. of C.  
Pueblo C. of C.  
Rocky Ford C. of C.  
Springfield C. of C.  
Stratton Rotary Club  
Sugar City C. of C.  
Swink C. of C.  
Wiley Commercial Club

### No. 7—ROCKY MOUNTAIN NATIONAL PARK

Boulder C. of C.  
Denver Convention and  
Visitors Bureau  
Estes Park C. of C.  
Grand Lake C. of C.  
Longmont C. of C.  
Loveland C. of C.  
Lyons C. of C.  
Lyons So. St. Vrain Assn.  
Rocky Mountain Natl. Park

### No. 8—PIKES PEAK-ROYAL GORGE

Canon City C. of C.  
Colorado Springs C. of C.  
Cripple Creek Junior C. of C.  
Florence C. of C.

### No. 9—GOLD & SILVER TOWNS

Aspen C. of C.  
Blackhawk Gilpin County  
C. of C.  
Buena Vista C. of C.  
Canon City C. of C.  
Central City C. of C.  
Denver Convention and  
Visitors Bureau

Dillon C. of C.  
Florence C. of C.  
Georgetown Civic Association  
Idaho Springs C. of C.  
Leadville C. of C.  
Pueblo C. of C.  
Salida C. of C.  
Westcliffe Custer County  
C. of C.

### No. 10—MESA VERDE NATIONAL PARK

Aguilar C. of C.  
Alamosa County C. of C.  
Antonito C. of C.  
Branson Trinchera Com-  
munity Club  
Castle Rock Lions Club  
Colorado Springs C. of C.  
Cortez C. of C.  
Del Norte C. of C.  
Durango C. of C.  
La Jara Junior C. of C.  
La Veta C. of C.  
Manassa C. of C.  
Mancos C. of C.  
Mesa Verde National Park  
Monte Vista Commercial Club  
Moffat-Hooper-Mosca Service  
League (Moffat)  
Norwood Lions Club  
Pagosa Springs C. of C.  
Pueblo C. of C.  
Rye C. of C.  
Sanford Boosters Club  
San Luis C. of C.  
Trinidad-Las Animas County  
C. of C.  
Walsenburg Huerfano County  
C. of C.

### No. 11—NORTHERN PLAINS

Akron Civic Club  
Ault Lions Club  
Bennett Lions Club  
Brighton C. of C.  
Brush Civic Club  
Deer Trail Lions Club  
Denver Convention and  
Visitors Bureau  
Erie Lions Club  
Fleming Community Club  
Ft. Lupton C. of C.  
Ft. Morgan C. of C.  
Frederick Lions Club  
Genoa Lions Club  
Greeley C. of C.  
Haxton Commercial Club  
Holyoke Lions Club  
Hudson Lions Club  
Johnstown Community Club  
Julesburg C. of C.  
Kiowa Lions Club  
Lafayette Lions Club  
Louisville Lions Club  
Milliken Community Club  
New Raymer Lions Club  
Otis Commercial Club  
Ovid Lions Club  
Platteville Community Club  
Seibert Lions Club  
Simla Lions Club  
Sterling C. of C.  
Windsor C. of C.  
Wray Commercial Club  
Yuma C. of C.

### No. 12—SOUTH PARK

Castle Rock Lions Club  
Denver Convention and  
Visitors Bureau  
Fairplay C. of C.

Make  
Yourself at Home  
in **COLORFUL**  
**COLORADO**



**C**ome to play—plan to stay!

Colorado climate is the magic ingredient that gives new zest to living—at work and at play. More than 300 sunny days a year! No cloudy, dreary spells—no excessive cold or heat. The high, dry, clean air keeps you vigorous and healthy.

Whether you plan to live in city, town, or country, you'll find more joy in living—and in working—than you've known before. Crowded, unwholesome tenements are unknown in Colorado. In this big country every home has its trees, lawn and flowers—with plenty of room for children to play in fresh air and sunshine.

The people of Colorado invite you to share with them the happiness of making their beautiful state your home.

*Colorado is  
Going Places!*



Major producer of livestock



World-famed celery



Certified onions



Melons recognized among America's finest

Large producer of fine quality potatoes



Colorado Fuel & Iron Corp.

## Come Along With US!

Following the decentralization of industry and the westward trend of population that have taken place since the end of World War II, hundreds of industries have relocated their plants, or established branches, in Colorado.

Colorado has abundant natural resources

- ... highly productive skilled labor
- ... central location for serving present markets while developing the great new Western market
- ... fast transportation facilities
- ... climate made for year-round living, with minimum time lost because of illness
- ... cooperative civic organizations

### Manufacturing Executives

For detailed information regarding Industrial Opportunities in Colorado, write to—

*Executive Director*

**COLORADO DEPARTMENT  
OF DEVELOPMENT**

State Capitol • Denver 2, Colorado

*COLORADO - Top Vacation State of the Nation*

RECEIVED

MAY 01 2012

STATE PUBLICATIONS  
Colorado State Library

DEPARTMENT OF PUBLIC RELATIONS • STATE CAPITOL • DENVER, COLORADO