

SERVICE

RECEIVED

IN ACTION

MAY 24 1980

COLORADO STATE LIBRARY  
State Publications Libr.

COLORADO STATE PUBLICATIONS LIBRARY  
UCSU20/6.22/2.801 c.2 local  
Bausch, Walter Char/Chemigation : recomm

Walter C. Bausch<sup>1</sup>

COLORADO STATE UNIVERSITY EXTENSION SERVICE



no. 2.801

**Quick Facts**

Chemigation is an agricultural practice that uses irrigation water as a transport mechanism for the application of chemicals to soils and crops.

Uniform application of the irrigation water is essential to insure uniform chemical distribution over the field.

Steep slopes and hilly terrain may require pressure regulators on sprinkler heads and higher operating pressures to get satisfactory uniformity of water application.

The greatest concern associated with chemigation is the potential pollution hazard; however, specific hazards can be avoided through the installation and maintenance of various safety devices.

move (portable laterals and side rolls), and traveling big gun sprinkler systems generally have a coefficient of uniformity (CU) of 70 to 75 percent. The CU of continuous move systems (center pivots and linears) normally ranges from 85 to 90 percent (Pair, 1975). Of the above mentioned sprinkler irrigation systems, center pivots and linears are probably best adapted to chemigation because their coefficient of uniformity compares favorably with other application methods. However, as with aircraft and ground sprayers, the CU of these sprinkler irrigation systems decreases with increased wind speed. Also, steep slopes and hilly terrain may require pressure regulators on the sprinkler heads and higher operating pressures to get satisfactory uniformity of water application.

Many advantages accrue to chemigation. This practice has been demonstrated to:

1. provide good uniformity of chemical application,
2. allow timely application of chemicals,
3. allow easy chemical incorporation and activation,
4. reduce soil compaction,
5. reduce mechanical damage to the crop,
6. reduce operator hazards,
7. possibly reduce chemical requirements, and
8. be an economical method for chemical application.

There also are disadvantages associated with chemigation. These are:

1. Chemical applications may have to take place when additional soil water is not required.
2. Ground water pollution is a possibility.
3. Chemical applications during windy conditions can result in serious non-uniformity, especially with solid set and periodic move sprinkler systems.
4. Sprinkler drift losses may become excessive when wind speeds exceed 15 mph.
5. Wind effects also can cause poor chemical deposition on the leeward side of bed or hill planted crops.

Chemigation is an agricultural practice that uses irrigation water as a transport mechanism for the application of chemicals to soils and crops. Considerable interest in this practice has evolved during recent years due to increased energy costs and advancements in irrigation system design. Chemigation is not a new concept. Rather, the basic idea originated more than 25 years ago with the application of fertilizers through a sprinkler irrigation system (Bryan and Thomas, 1958). Recently, other chemicals such as herbicides, fungicides, insecticides and nematocides have been effectively applied with irrigation water.

Since the current emphasis is on total chemigation, i.e., both soil and foliar applied chemicals, sprinkler irrigation is the only irrigation method that lends itself to this practice. Other irrigation methods (surface and trickle/drip) can accommodate only soil applied chemicals.

Uniform application of the irrigation water is essential to insure uniform chemical distribution over the field. Most sprinkler irrigation systems can be designed and operated to achieve good uniformity of water application. Solid set, periodic

<sup>1</sup>Walter C. Bausch, CSU extension irrigation specialist, department of agricultural and chemical engineering (1/15/85)

Of greatest concern is the potential pollution hazard associated with chemigation. Two specific hazards are: (1) the irrigation pumping plant may shut down from mechanical or electrical failure while the injection pump continues to operate thus causing a mixture of water and chemical to backflow into the irrigation well or other water source and (2) the chemical injection pump may stop while the irrigation pump continues to operate thereby causing water to backflow through the chemical supply tank and overflow onto the ground. These hazards can be avoided through installation and maintenance of various safety devices.

The irrigation pumping plant and the chemical injection pump should be interlocked to provide shutoff of the chemical pump if the irrigation pump stops. Interlocking the two pumps will prevent the possibility of the irrigation pipeline being filled with the chemical mixture from the supply tank. For internal combustion engine powered irrigation pumps, the chemical injection pump can be belt driven (Figure 1-A) from the drive shaft or from an accessory pulley on the engine. For an electrical motor driven irrigation pump, a separate electric motor (Figure 2-A) is required to power the chemical injection pump. The electric controls for the two motors would be interlocked as shown in Figure 2-B to ensure that the injection pump motor stops when the irrigation pump motor stops.

Check and vacuum relief valves (anti-siphon device) are required in the irrigation pipeline. This check valve may sometimes be referred to as an anti-backflow valve. These are shown in Figures 1-B and 2-C. They keep water or a mixture of water and chemical from draining or siphoning back into the irrigation well. Both valves are located between the irrigation pump discharge and the point of chemical injection into the irrigation pipeline. The check valve should provide a tight, positive seal and should be installed to permit easy removal for maintenance and replacement of worn and non-functional components.

A suggested method of installation is to use bolt flanges as shown in Figure 3. Valves D and I (Figure 3) are recommended. Valve D provides a fresh water supply for clean-up; valve I is a manual drain to determine whether or not the check valve is functioning properly. An observation port (Figure 3-A) also could be installed as an additional method to determine the functional status of the check valve. A third valve (Figure 4-H) is a manual low point drain valve that would provide the capability to drain the water-chemical mixture from the irrigation pipeline. Valve I (Figure 3) could be replaced with an automatic drain valve that would automatically drain seepage (if any) through the check valve thereby ensuring that a water-chemical mixture could not backflow into the well when the irrigation pump stops. If the pipeline is drained (automatically or manually), this mixture should be contained, that is, not allowed to drain onto the ground.

A check valve in the chemical injection discharge line (Figure 1-C and Figure 2-D) also is required to stop waterflow into the chemical supply tank from the irrigation system. This valve sometimes referred to as an in-line check valve should be installed at the injection port (Figure 3-G) on the irrigation pipeline. Its function is to prevent a possible chemical spill at or near the irrigation well. In addition to this check valve, a small, normally closed solenoid valve could be installed in the chemical injection suction line (Figure 1-D and Figure 2-E). This feature would provide a positive shut-off so that neither the chemical nor the water could flow in either direction if the chemical pump stops. An electrical interlock with the motor driving the injection pump would be required.

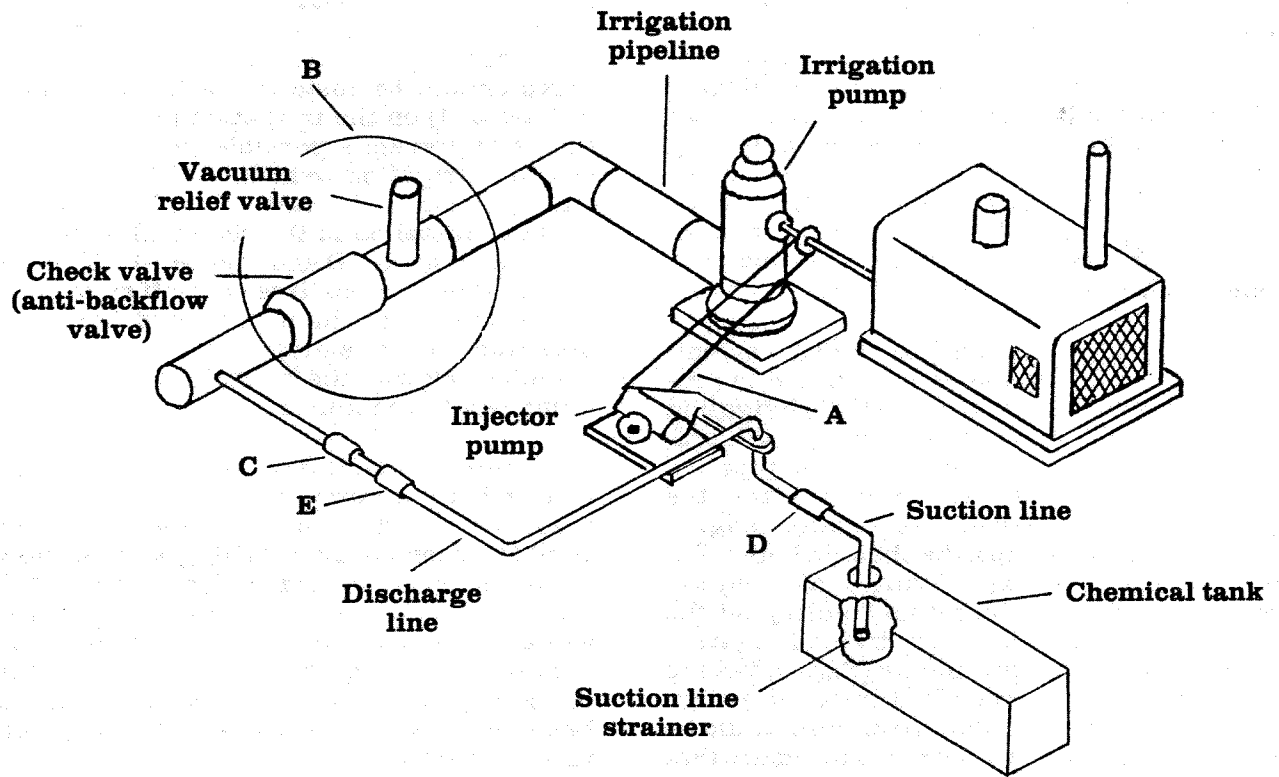
Automatic shut-down of the irrigation system, irrigation pump, and the injection pump if pressure is lost in the injection discharge line would be possible by installing a pressure switch in the injection discharge line (Figure 1-E and Figure 2-F). Primary reasons for pressure loss would be due to depletion of chemical in the supply tank, plugging of the filter/strainer, or injection pump failure. The pressure switch should be electrically interlocked with the irrigation system control panel.

Maintenance of the installed safety devices is essential to ensure that all equipment is functional. This will require frequent inspections and possible replacement of worn and non-functional components. As a result, chemigation will be a safe practice and not a pollution hazard.

## References

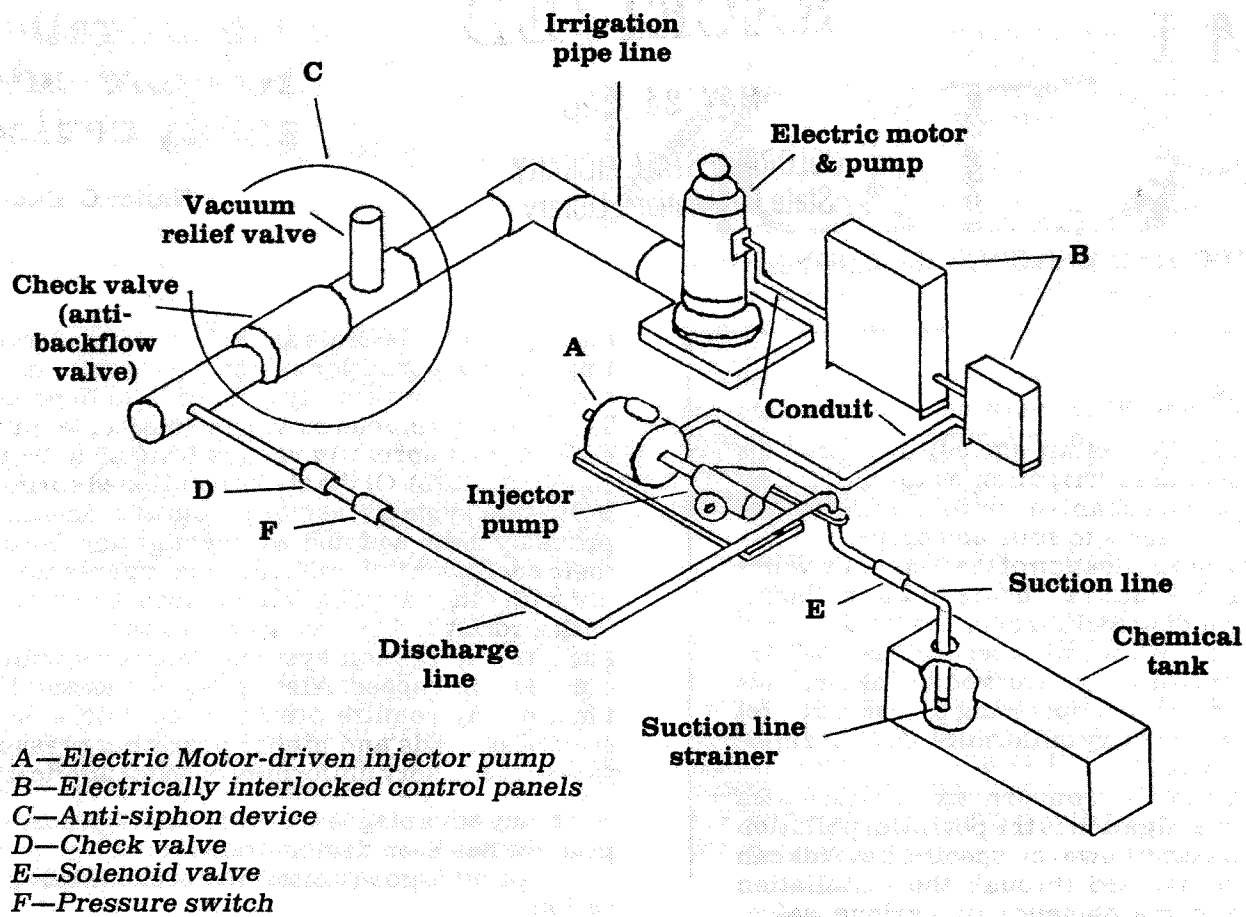
- ASAE Engineering Practice: ASAE EP409. *Safety devices for applying liquid chemicals through irrigation systems*. 1983-1984 Agricultural Engineers Yearbook of Standards, American Society of Agricultural Engineers.
- Bryan, B. B. and E. L. Thomas, Jr. 1958. *Distribution of fertilizer materials applied through sprinkler irrigation systems*. University of Arkansas Agricultural Experiment Station, Fayetteville, AR, Bulletin 598, 12 pp.
- Fischbach, Paul E. 1982. *Applying chemical through irrigation systems: safety and environmental considerations*. In: Young, J. R. and D. R. Sumner (eds.), *Proceedings 2nd National Symposium on Chemigation*, Tifton, GA. August.
- Pair, C. H. (ed.) 1975. *Sprinkler irrigation*. Fourth edition. Sprinkler Irrigation Association, Silver Spring, Maryland.

UC  
C.

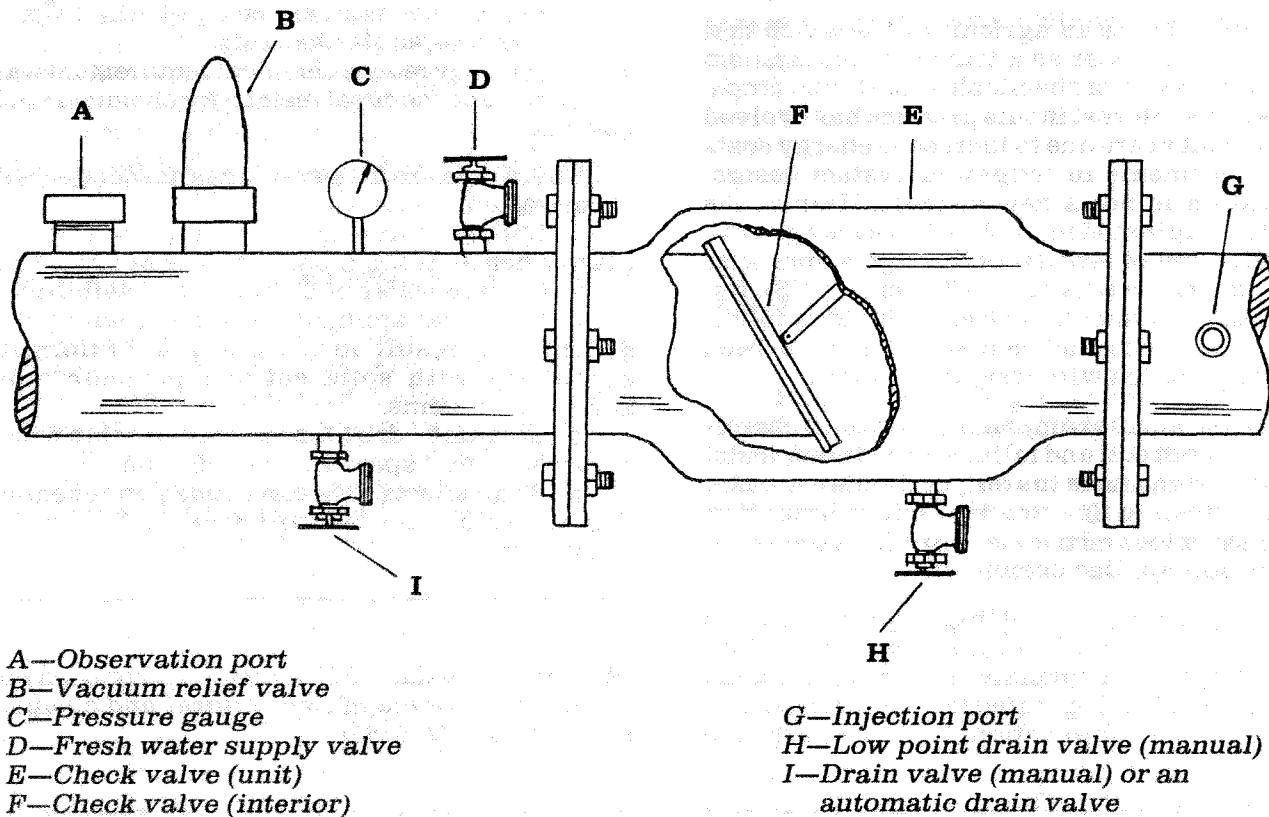


- A—Belt-driven injector pump
- B—Anti-siphon device
- C—Check valve
- D—Solenoid valve
- E—Pressure switch

Figure 1: Chemigation safety equipment for internal combustion engine pumping plant (after Fischbach, 1982).



**Figure 2: Chemigation safety equipment for electric motor irrigation pumping plant (after Fischbach, 1982).**



**Figure 3: Detail of anti-siphon device. (Drawn by Dale Baker.)**