

**INSTITUTIONAL
FACTS
AND
CHARACTERISTICS**

University of Colorado Denver

**Office of Institutional Research, Planning and Analysis
Fall 2007**

TABLE OF CONTENTS

SECTION I. GENERAL INFORMATION

Role and Mission Statement	1
Definitions of Terms and Abbreviations.....	2
History and Summary of Facts.....	3

SECTION II. STUDENT DATA

Headcount Enrollments by School and College – Fall Semesters	1
Headcount Enrollments by Gender, Student Level and Full-time/Part-time – Fall Semesters	2
Enrollments by Class and Gender	3
Chart: Distributions of Headcount Students by Class, Major and Ethnic Category – Fall 2007	7
Comparison of Headcount to Term FTE Students – Fall 2003 through Fall 2007	8
Enrollment by Major – Fall 2007.....	9
Enrollment by Major, Undergraduate History – Fall 2003 through Fall 2007	13
Enrollment by Major, Graduate History – Fall 2003 through Fall 2007.....	15
Enrollment by Major, First Professional History – Fall 2003 through Fall 2007	18
Ethnic Distribution of Headcount Students – Fall Semesters	19
Ethnic Distribution of Students by Campus, Level and School/College – Fall Semesters	21
Age Distribution – Fall 2007	22
Distribution of Headcount by Colorado County – Fall 2007.....	23
Distribution of Headcount by Metro Denver County – Fall 2007	24
Average Student Credit Hour Load by Level – Fall Semesters	25
Undergraduate Applicants by Academic Unit – Fall 2006 and Fall 2007	27
FY FTE Students by School/College and Subject Area – 2002-03 through 2006-07.....	28
Chart: FY FTE Students by Level of Instruction	29
FY FTE Students by School/College and Level of Instruction.....	30
FTE Students by School/College, Department and Level of Instruction – FY 2006-07.....	31
Student/Faculty Ratios by School/College and Department – FY 2002-03 through FY 2006-07	32

SECTION III. ALUMNI DATA

Alumni by Year of Graduation	1
Alumni by Geographic Location.....	4
Alumni by Degrees – Cumulative 1975-76 through 2006-07.....	5

SECTION IV. DEGREE DATA

Degrees Offered by School/College & Program (CCHE Approved Degree Programs) – FY 2006-07	1
Degrees Conferred – FY 1975-76 through FY 2006-07	3
Degrees Conferred by Gender – FY 2006-07	4
Degrees Conferred by Ethnicity & Student Level – FY 2006-07	6
Degrees Conferred by School/College – FY 2002-03 through FY 2006-07.....	8

TABLE OF CONTENTS

(Continued)

SECTION V. FACULTY & STAFF DATA

Full-time Instructional Faculty Distribution by Gender and Highest Degree Awarded	1
Full-time Instructional Faculty Distribution by Ethnicity.....	2
Full-time Instructional Faculty Distribution by Tenure Status and Rank	3
Full-time Instructional Faculty Distribution by Age – Downtown Campus	4
Full-time Instructional Faculty Distribution by Age – Anschutz Medical Campus.....	5
Percent Full-time Faculty – 2002-03 through 2006-07.....	6
FTE Instructional Faculty – 2002-03 through 2006-07	7
Student/Faculty Ratios by School/College and Department – FY 2002-03 through FY 2006-07	8
Student Credit Hours/FTE Faculty by School/College – FY 2002-03 through FY 2006-07.....	9
Full-time and Part-time Distribution by Gender	10
Full-time and Part-time Distribution by Ethnicity	11

SECTION VI. FINANCIAL DATA

Financial Aid Awards – FY 2005-06.....	1
Revenue and Expenditures State Appropriations – FY 2006-07	4
Chart: Revenue FY 2006-07 and Expenditures FY 2006-07	5
Contracts and Grants by Funding Source – FY 2006-07	6
Total Contracts and Grants Awarded – FY 2002-03 through 2006-07.....	7
Contracts and Grants Awarded by Organizational Unit – FY 2006-07	8
FY 2007 Actual Expenditures and Revenue Sources – Downtown Campus	9
FY 2007 Actual Expenditures and Revenue Sources – Anschutz Medical Campus.....	10
Top 20 Sponsored Program Awards	11

Section I.
General Information

UNIVERSITY OF COLORADO DENVER STATEMENTS OF PURPOSE

The University of Colorado Denver is a new university composed of three University of Colorado campuses – Downtown, Ninth and Colorado, and the Anschutz Medical Campus at Aurora. The University of Colorado Board of Regents created the new university on July 1, 2004, with the consolidation of the University of Colorado at Denver and the University of Colorado Health Sciences Center. The new university’s mission spans the scopes of its parts and its vision is to:

- Become the premier urban research university with nationally ranked programs of teaching, clinical care and community service throughout Colorado.
- Provide access to higher education for undergraduate, graduate, and professional students with increased multicultural diversity through recruitment and pipeline initiatives.
- Offer new interdisciplinary programs of education and research in the life sciences, professional programs and liberal arts.
- Become a more entrepreneurial university with two campuses in the Denver/Aurora metropolitan area and the state.
- Develop regional business and community partnerships that stimulate new programs and an improved economy.

In addition to the material present in this report, readers are invited to visit the campus web page at <http://www.ucdhsc.edu/> and the consolidation web site at <http://www.cusys.edu/consolidation>.

DOWNTOWN CAMPUS STATEMENTS OF PURPOSE

- Provide students with learning opportunities that will enhance the quality of their lives, that will make them well-educated citizens, that will lead to rewarding careers, and that will provide Denver and Colorado with a workforce able to compete in the global economy;
- Develop research, scholarship and creative work that will advance the base of knowledge in our disciplines and that will contribute to the vitality of our culture and/or economy;
- Apply the university’s skills and knowledge to real problems in the Denver metro area;
- Build and maintain an institutional culture of plurality, collegiality, integration and customer service.

Source: NCA Institutional Self -Study

MISSION, ROLE AND SCOPE STATEMENT

(SB 03-304 signed by Governor Owens June, 2003)

The Denver campus of the University of Colorado shall be an urban comprehensive undergraduate and graduate research university with selective admission standards. The Denver campus shall offer baccalaureate, masters, and a limited number of doctoral degree programs, emphasizing those that serve the needs of the Denver metropolitan area. The Denver campus has statewide authority to offer graduate programs in Public Administration and exclusive authority in Architecture and Planning.

ANSCHUTZ MEDICAL CAMPUS

MISSION STATEMENT

The mission statement of the Anschutz Medical Campus (AMC) reflects the main purposes of the institution:

- the education of health professionals;
- the delivery of both health care and community service; and
- the advancement of knowledge through research in the health sciences.

LEGISLATIVE MISSION

The legislative mission for the AMC is mandated by the Constitution of Colorado. The Colorado Revised Statutes (C.R.S. 23-20-101) state that the AMC campus’ role is to “be a specialized professional institution offering baccalaureate and graduate programs in health-related disciplines.” This mission statement was created during the early history of the institution and, although reviewed by the state legislature and the Board of Regents, has not changed since that time.

DEFINITION OF TERMS AND ABBREVIATIONS

Some of the tables and graphs included in this document use abbreviations or terms which may be unfamiliar. Following is a list of the most commonly used terms and related definitions.

FTE Student (FTES) - full-time equivalent student, calculated by dividing student credit hours by 30.

Fiscal Year FTES - includes summer, fall, and spring student credit hours divided by 30.

Term FTES - full-time equivalent student for a single semester, calculated by dividing student credit hours by 15.

Headcount Students - the number of individual students enrolled for a semester.

SCH - Student credit hours, derived by multiplying the number of students enrolled in a course by the course credit (e.g., 3.0 credit hours x 30 students = 90 SCH).

FTEF - Full-time equivalent faculty.

SFR - Student faculty ratio (FTES divided by FTEF).

NRA - Non-resident alien.

First Professional – Programs offering degrees in dentistry (DDS), physical therapy (DPT), medicine (MD), nursing (ND/DNP), or pharmacy (PharmD)

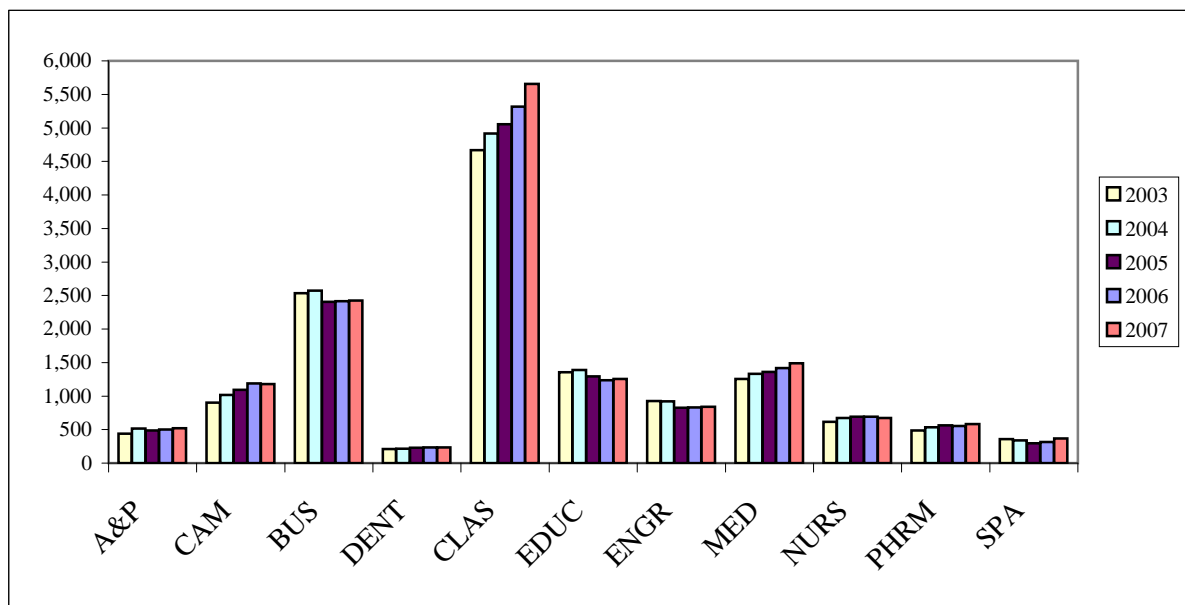
UNIVERSITY OF COLORADO DENVER HISTORY AND SUMMARY OF FACTS

History

- 1883 The Medical Department of the University of Colorado opened with two students and two senior faculty members.
- 1898 The School of Nursing was established.
- 1912 University of Colorado organizes Department of Correspondence and Extension in Denver; courses first offered.
- 1913 The School of Pharmacy became an independent school after it had been a department in the School of Medicine for two years.
- 1923 Regents of University of Colorado adopt policy to accept up to 90 hours of credit work earned in the Extension Division.
- 1925 The new medical center at Ninth Avenue near Colorado Blvd. was formally dedicated.
- 1953 Appointment of a Dean of the Extension Division.
- 1956 Regents purchase Tramway Building to house Extension Division.
- 1964 Regents change name of Denver Extension Center to the University of Colorado - Denver Center and place the administration of programs under the Vice President for Academic Affairs and Dean of Faculties.
- 1965 The Medical Center had been greatly expanded to 47 acres including a new Colorado General Hospital and modern quarters for the Medical and Nursing Schools.
- 1972 Constitutional amendment allowing the University of Colorado to maintain and develop branches and to rename the Denver Center the University of Colorado at Denver.
- 1973 The School of Dentistry enrolled its first class.
- 1974 House Bill 1163 Statutory Recognition for Auraria.
Reorganization of the University of Colorado into a four-campus system.
- 1992 School of Pharmacy moved to Health Sciences Center from the Boulder campus.
- 1995 The federal government conveyed 217 acres of the Fitzsimons site in Aurora, Colorado, to the University of Colorado to build a 21st century health sciences center from the ground up. The first phase of transition from the current campus at Ninth Avenue and Colorado Boulevard in Denver to the Fitzsimons will be completed in 2010.
- 2000 The Anschutz Outpatient Pavilion, the Anschutz Cancer Pavilion, and the Building 500 renovation for support space were finished.
- 2001 The Preservation and Access Service Center for Colorado Academic Libraries – Library archive facility, the Rocky Mountain Lions Eye Institute, and the Perinatal Research Center Expansion were completed.
- 2002 The Nighthorse Campbell Native Health Building was dedicated.
- 2004 The Anschutz Inpatient Pavilion opened. The Research Complex I was completed. Included in the Research Complex I facilities are wet and dry research laboratories, core laboratories, lab support space (including space for linear equipment), researcher and program offices, conference rooms, a central vivarium, auditoria, and building support space.
- 2004 The University of Colorado at Denver and the University of Colorado Health Sciences Center joined into a single major urban research university. The consolidated institution boasts some 27,070 students and more than 100 degree programs. The new entity operates on a budget of \$866 million and attracts more than \$300 million a year in research grants and contracts. Consequently, renamed as the University of Colorado at Denver and Health Sciences Center.
- 2005 The Barbara Davis Center for Childhood Diabetes, the largest diabetes and endocrine care research and training program in Colorado, transitioned into a new facility at Fitzsimons.
- 2006 In recognition of a series of gifts totaling more than \$91 million by The Anschutz Foundation, the University of Colorado system announced that it's University of Colorado at Denver and Health Sciences Center's Aurora campus will be known as the Anschutz Medical Campus.
- 2007 University of Colorado at Denver and Health Sciences Center undergoes a renaming and rebranding initiative and is renamed University of Colorado Denver.

Section II. Student Data

HEADCOUNT ENROLLMENTS BY SCHOOL AND COLLEGE FALL SEMESTERS, END-OF-TERM



	<u>2003</u>	<u>2004</u>	<u>2005</u>	<u>2006</u>	<u>2007</u>
Architecture & Planning ¹	441	517	485	501	521
Arts & Media ²	902	1,016	1,095	1,189	1,177
Business	2,536	2,572	2,407	2,415	2,423
Dental Medicine	209	216	230	233	233
Liberal Arts & Sciences	4,668	4,918	5,053	5,316	5,658
Education	1,354	1,389	1,295	1,236	1,257
Engineering	927	920	827	829	840
Medicine	1,255	1,332	1,361	1,417	1,488
Nursing	618	672	692	692	674
Pharmacy	485	535	563	555	584
Public Affairs	359	340	297	317	366
Non-Degree	783	644	592	571	545
TOTAL UCD	14,537	15,071	14,897	15,271	15,766

Notes:

¹Architecture & Planning does not include students from the undergraduate Environmental Design program taught in Boulder.

Arts, Fine Arts, Music and Theatre were transferred into Arts & Media FY 1997-98.

Data are end-of-term figures and include AU1 only.

Source:

Enrollment Reports

Office of Institutional Research, Planning & Analysis

**HEADCOUNT ENROLLMENTS BY GENDER,
UNDERGRADUATE/GRADUATE/FIRST PROFESSIONAL AND FULL-
TIME/PART-TIME STATUS
FALL SEMESTERS, END-OF-TERM**

DOWNTOWN CAMPUS								
FALL SEMESTER	TOTAL STUDENT ENROLLMENT	GENDER		LEVEL			STATUS	
		FEMALE	MALE	UNDER-GRAD	GRAD	1st Professional	FULL-TIME	PART-TIME
2003	11,970	6,566	5,404	6,835	5,135		6,377	5,593
2004	12,316	6,672	5,644	7,250	5,066		6,778	5,538
2005	12,051	6,578	5,473	7,446	4,605		6,775	5,276
2006	12,374	6,775	5,599	7,869	4,505		6,944	5,430
2007	12,787	7,011	5,776	8,186	4,601		7,305	5,482
ANSCHUTZ MEDICAL CAMPUS								
FALL SEMESTER	TOTAL STUDENT ENROLLMENT	GENDER		LEVEL			STATUS	
		FEMALE	MALE	UNDER-GRAD	GRAD	1st Professional	FULL-TIME	PART-TIME
2003	2,567	1,759	808	320	998	1,249	2,285	282
2004	2,755	1,914	841	360	993	1,402	2,528	227
2005	2,846	1,971	878	422	1,013	1,411	2,606	243
2006	2,897	1,997	900	421	1,034	1,442	2,695	202
2007	2,979	2,013	966	430	1,053	1,496	2,707	272
UCD TOTAL								
FALL SEMESTER	TOTAL STUDENT ENROLLMENT	GENDER		LEVEL			STATUS	
		FEMALE	MALE	UNDER-GRAD	GRAD	1st Professional	FULL-TIME	PART-TIME
2003	14,537	8,325	6,212	7,155	6,133	1,249	8,662	5,875
2004	15,071	8,586	6,485	7,610	6,059	1,402	9,306	5,765
2005	14,897	8,549	6,351	7,868	5,618	1,411	9,381	5,519
2006	15,271	8,772	6,499	8,290	5,539	1,442	9,639	5,632
2007	15,766	9,024	6,742	8,616	5,654	1,496	10,012	5,754

Notes:

Fall 2002 and 2003 are census date figures for HSC; all other figures are end-of-term.

Data are end-of-term figures and include AU1 only.

Source:

Enrollment Reports

Office of Institutional Research, Planning & Analysis

ENROLLMENTS BY CAMPUS, CLASS AND GENDER					
FALL SEMESTERS, END-OF-TERM					
	2003	2004	2005	2006	2007
<i>UNDERGRADUATE ENROLLMENT</i>					
DOWNTOWN CAMPUS					
FRESHMEN	1,397	1,525	1,541	1,740	1,987
Male	621	697	710	781	906
Female	776	828	831	959	1,081
SOPHOMORES	1,480	1,565	1,544	1,584	1,651
Male	681	698	686	711	762
Female	799	867	858	873	889
JUNIORS	1,573	1,736	1,813	1,845	1,925
Male	748	810	814	842	842
Female	825	926	999	1,003	1,083
SENIORS & 5TH YEAR	2,280	2,315	2,379	2,560	2,536
Male	1,077	1,148	1,190	1,277	1,241
Female	1,203	1,167	1,189	1,283	1,295
POST-BACCALAUREATE CERTIFICATE			62	55	16
Male			20	9	4
Female			42	46	12
NON-DEGREE	105	109	107	85	71
Male	60	59	56	36	38
Female	45	50	51	49	33
DC UNDERGRADUATE					
SUBTOTAL	6,835	7,250	7,446	7,869	8,186
Male	3,187	3,412	3,476	3,656	3,793
Female	3,648	3,838	3,970	4,213	4,393
ANSCHUTZ MEDICAL CAMPUS					
JUNIORS	150	155	209	161	193
Male	15	21	16	18	16
Female	135	134	193	143	177
SENIORS	166	203	210	256	236
Male	12	14	24	23	29
Female	154	189	186	233	207
NON-DEGREE	4	2	3	4	1
Male	0	1	0	0	0
Female	4	1	3	4	1
AMC UNDERGRADUATE					
SUBTOTAL	320	360	422	421	430
Male	27	36	40	41	45
Female	293	324	382	380	385

ENROLLMENTS BY CAMPUS, CLASS AND GENDER					
FALL SEMESTERS, END-OF-TERM					
	2003	2004	2005	2006	2007
UCD UNDERGRADUATE TOTAL					
FRESHMEN	1,397	1,525	1,541	1,740	1,987
Male	621	697	710	781	906
Female	776	828	831	959	1,081
SOPHOMORES	1,480	1,565	1,544	1,584	1,651
Male	681	698	686	711	762
Female	799	867	858	873	889
JUNIORS	1,723	1,891	2,022	2,006	2,118
Male	763	831	830	860	858
Female	960	1,060	1,192	1,146	1,260
SENIORS & 5TH YEAR	2,446	2,518	2,589	2,816	2,772
Male	1,089	1,162	1,214	1,300	1,270
Female	1,357	1,356	1,375	1,516	1,502
POST-BACCALAUREATE					
CERTIFICATE	0	0	62	55	16
Male	0	0	20	9	4
Female	0	0	42	46	12
NON-DEGREE	109	111	110	89	72
Male	60	60	56	36	38
Female	49	51	54	53	34
UCD UNDERGRADUATE					
TOTAL	7,155	7,610	7,868	8,290	8,616
Male	3,214	3,448	3,516	3,697	3,838
Female	3,941	4,162	4,352	4,593	4,778
GRADUATE ENROLLMENT					
DOWNTOWN CAMPUS					
MASTERS	4,188	4,273	3,864	3,746	3,864
Male	1,830	1,867	1,656	1,615	1,676
Female	2,358	2,406	2,208	2,131	2,188
DOCTORATE	269	258	256	273	263
Male	111	117	115	124	114
Female	158	141	141	149	149
NON-DEGREE	678	535	485	486	474
Male	276	248	226	204	193
Female	402	287	259	282	281
DC GRADUATE SUBTOTAL	5,135	5,066	4,605	4,505	4,601
Male	2,217	2,232	1,997	1,943	1,983
Female	2,918	2,834	2,608	2,562	2,618

ENROLLMENTS BY CAMPUS, CLASS AND GENDER					
FALL SEMESTERS, END-OF-TERM					
	2003	2004	2005	2006	2007
ANSCHUTZ MEDICAL CAMPUS					
MASTERS	517	508	494	534	496
Male	68	58	55	70	74
Female	449	450	439	464	422
DOCTORATE	347	384	399	404	416
Male	129	153	163	171	171
Female	218	231	236	233	245
NON-DEGREE	134	101	120	96	141
Male	59	41	39	26	41
Female	75	60	81	70	100
AMC GRADUATE					
SUBTOTAL	998	993	1,013	1,034	1,053
Male	256	252	257	267	286
Female	742	741	756	767	767
UCD GRADUATE TOTAL					
MASTERS	4,705	4,781	4,358	4,280	4,360
Male	1,898	1,925	1,711	1,685	1,750
Female	2,807	2,856	2,647	2,595	2,610
DOCTORATE	616	642	655	677	679
Male	240	270	278	295	285
Female	376	372	377	382	394
NON-DEGREE	812	636	605	582	615
Male	335	289	265	230	234
Female	477	347	340	352	381
UCD GRADUATE TOTAL	6,133	6,059	5,618	5,539	5,654
Male	2,473	2,484	2,254	2,210	2,269
Female	3,660	3,575	3,364	3,329	3,385

ENROLLMENTS BY CAMPUS, CLASS AND GENDER FALL SEMESTERS, END-OF-TERM					
	2003	2004	2005	2006	2007
<i>FIRST PROFESSIONAL ENROLLMENT</i>					
ANSCHUTZ MEDICAL CAMPUS					
Dental Students	164	170	182	192	197
Male	99	101	107	112	116
Female	65	69	75	80	81
Doctor of Nursing Practice			7	14	24
Male			2	2	5
Female			5	12	19
Doctor of Physical Therapy		65	91	135	134
Male		10	15	22	24
Female		55	76	113	110
Medical Doctor	526	555	566	585	603
Male	279	288	292	301	313
Female	247	267	274	284	290
Nursing Doctorate	116	127	50	3	3
Male	13	11	3	1	0
Female	103	116	47	2	3
Doctor of Pharmacy	443	485	515	513	535
Male	134	143	162	154	177
Female	309	342	353	359	358
FIRST PROFESSIONAL					
TOTAL	1,249	1,402	1,411	1,442	1,496
Male	525	553	581	592	635
Female	724	849	830	850	861
UCD TOTAL	14,537	15,071	14,897	15,271	15,766
Male	6,212	6,485	6,351	6,499	6,742
Female	8,325	8,586	8,546	8,772	9,024

Notes:

Fall 2002 and 2003 are census date figures for HSC; all other figures are end-of-term.

DDC does not have first professional level enrollment.

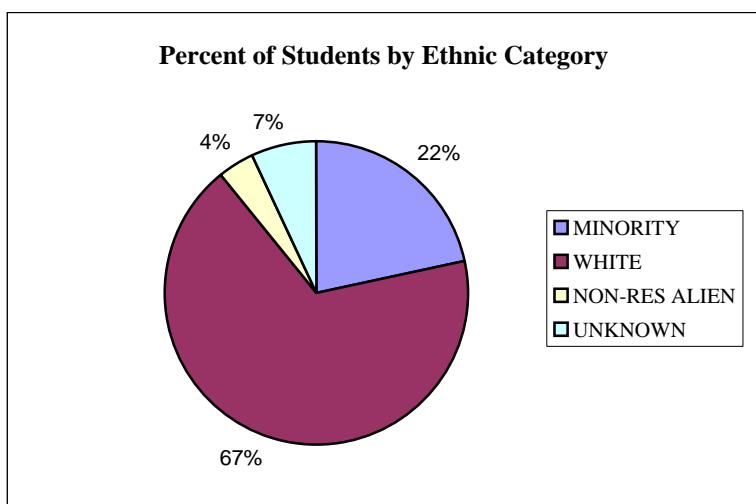
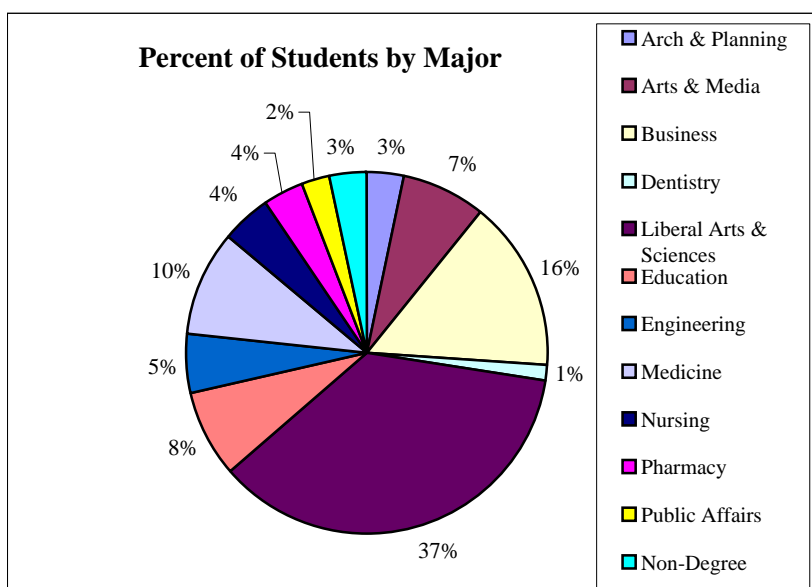
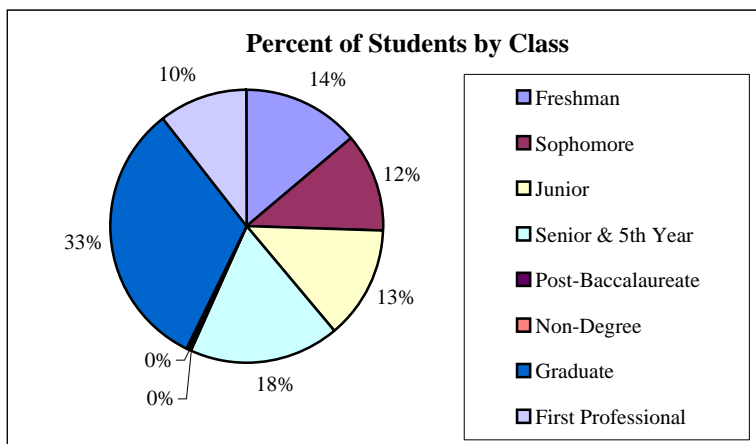
Data are end-of-term figures and include AU1 only.

Source:

Enrollment Reports

Office of Institutional Research, Planning & Analysis

DISTRIBUTION OF HEADCOUNT STUDENTS FALL 2007



Notes:

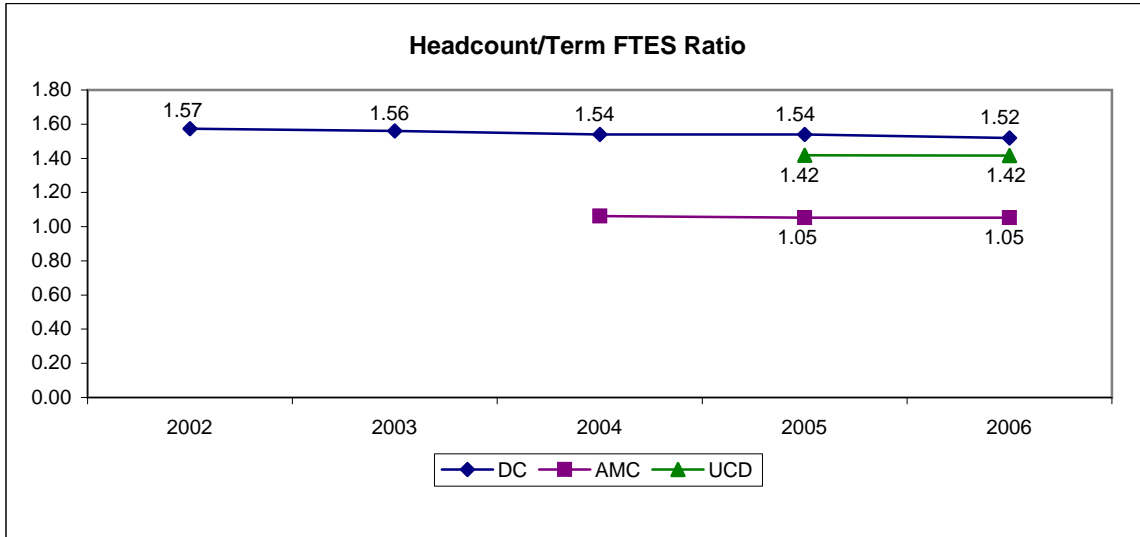
Architecture & Planning does not include students from the undergraduate Environmental Design program
 Arts, Fine Arts, Music and Theatre were transferred into Arts & Media FY 1997-98.
 Data are end-of-term figures and include AU1 only.

Source:

Enrollment Reports
 Office of Institutional Research, Planning & Analysis

**COMPARISON OF HEADCOUNT TO TERM FTE STUDENTS
FALL 2003 THROUGH FALL 2007**

3/28/2008



DOWNTOWN CAMPUS

<u>FALL SEMESTER</u>	<u>HEADCOUNT</u>	<u>TERM FTES</u>	<u>HEADCOUNT/TERM FTES RATIO</u>
2003	11,970	7606.8	1.57
2004	12,316	7895.9	1.56
2005	12,051	7830.6	1.54
2006	12,374	8036.7	1.54
2007	12,787	8421.9	1.52

ANSCHUTZ MEDICAL CAMPUS

<u>FALL SEMESTER</u>	<u>HEADCOUNT</u>	<u>TERM FTES</u>	<u>HEADCOUNT/TERM FTES RATIO</u>
2003	2,567	n/a	n/a
2004	2,755	n/a	n/a
2005	2,846	2684.1	1.06
2006	2,897	2754.2	1.05
2007	2,979	2904.5	1.03

UCD TOTAL

<u>FALL SEMESTER</u>	<u>HEADCOUNT</u>	<u>TERM FTES</u>	<u>HEADCOUNT/TERM FTES RATIO</u>
2002	14,537	n/a	n/a
2003	15,071	n/a	n/a
2004	14,897	n/a	n/a
2005	15,271	10,790.9	1.42
2006	15,766	11,326.3	1.39

Notes:

Fall 2002 and 2003 are census date figures for HSC; all other figures are end-of-term and include AU1 only.

Headcount to FTE student ratio indicates the number of headcount students it takes to equal one full-time equivalent student at the University.

Prior to fall 2005, term FTES for the Health Sciences Center is unavailable due to some programs being on quarters and other on semesters. Beginning summer 2005, all programs are on the semester system.

Source:

Enrollment Reports, Office of Institutional Research, Planning & Analysis

**ENROLLMENTS BY MAJOR
FALL 2007**

3/28/2008

<u>MAJOR CODE</u>		<u>UNDER- GRAD</u>	<u>GRAD</u>	<u>FIRST PROF</u>	<u>TOTAL</u>
DOWNTOWN CAMPUS					
COLLEGE OF ARCHITECTURE AND PLANNING			521		521
ARCH	Architecture		277		277
ARUR	Architecture in Urban Design		6		6
DSPL	Design and Planning		35		35
LAND	Landscape Architecture		97		97
URRP	Urban and Regional Planning		106		106
COLLEGE OF ARTS AND MEDIA		1,161	16		1,177
AVFT	Film and Video Studies	88			88
CRAR	Fine Arts - BFA Program	280			280
FINE	Fine Arts - BA Program	87			87
MUIS	Music Industry Studies	107			107
MUSC	Music	375			375
RAMS	Recording Arts		16		16
THFT	Theatre, Film and Television - BFA Program	117			117
THTE	Theatre, Film and Television - BA Program	16			16
THTR	Theatre	24			24
AMUD	Undetermined	67			67
COLLEGE OF BUSINESS		1,364	1,059		2,423
ACCT	Accounting	273	123		396
AMBA	Business Administration-One Year Program				0
BGEN	General Business				0
FNCE	Finance	202	83		285
HLAD	Health Administration		9		9
INBU	International Business	163	43		206
INFS	Information Systems	65	62		127
MBAC	Master of Business Administration - Cohort Program		1		1
MBAD	Master of Business Administration		599		599
MBAH	Master of Business Administration Health		60		60
MGMT	Management	279			279
MKTG	Marketing	222	35		257
ORMG	Organization Management		29		29
PHIS	Computer Science and Information Systems		14		14
PHRM	Human Resources Management	28			28
XMBA	Master of Business Administration - Executive Program		1		1
BUUD	Undetermined	132			132
COLLEGE OF ENGINEERING AND APPLIED SCIENCE		528	312		840
CMSC	Computer Science		83		83
CSCI	Computer Science & Engineering	87			87
CVEN	Civil Engineering	132	90		222
EEEN	Electrical Engineering	137	65		202
MAEG	Engineering		42		42
MCEN	Mechanical Engineering	138	23		161
PHCS	Computer Science and Information Systems		9		9
ENUD	Undetermined	34			34
SCHOOL OF EDUCATION AND HUMAN DEVELOPMENT		16	1,241		1,257
ALIB			5		5
ALPE	Administration Leadership and Professional Studies		74		74
ALPS	Administration Leadership and Professional Studies		42		42
CACR	Counseling Psychology and Counselor Education Agency CAR		6		6
CAEP	Counseling Psychology and Counselor Education Agency EAP		5		5
CAIN	Counseling Psychology and Counselor Education - INT		21		21
CAML	Counseling Psychology and Counselor Education Agency MUL		5		5
CCFC	Counseling Psychology and Counselor Education - Family		69		69
CEAP	Counseling Psychology and Counselor Education		1		1
CIED	Curriculum and Instruction - Access Program		14		14
CIEN	Curriculum and Instruction - English (Secondary)		4		4
CILT	Certificate: Instructional Design & Adult Learning		2		2
CIMA	Curriculum and Instruction - Mathematics (Elem. & Secondary)		12		12
CIMH	Curriculum and Instruction - Mental Health (Elem. & Secondary)				0
CISC	Curriculum and Instruction - Science (Elem. & Secondary)		5		5
CISS	Curriculum and Instruction - Social Studies (Secondary)		2		2
CITE	Curriculum and Instruction - Technology (Elem. & Secondary)		3		3

<u>MAJOR CODE</u>		<u>UNDER- GRAD</u>	<u>GRAD</u>	<u>FIRST PROF</u>	<u>TOTAL</u>
CPCE	Counseling Psychology and Counselor Education		18		18
CPEL	Curriculum and Instruction - Elementary		7		7
	(continued on next page)				
CPMA	Curriculum and Instruction - Mathematics		7		7
CPSI	Curriculum and Instruction - Science		11		11
CPSO	Curriculum and Instruction - Social Studies		5		5
CSCH	Counseling Psychology and Counselor Education - School		44		44
DEGL	Curriculum and Instruction - Secondary English Dual Lic.		3		3
DELE	Curriculum and Instruction - Elementary Educ Dual Lic.		22		22
DSOC	Curriculum and Instruction - Social Studies (Special Education)		5		5
EBIL	Curriculum and Instruction - Belm/Bilingual/ESL		12		12
ECED	Early Childhood Education		24		24
ECSE	Early Childhood Special Education		77		77
EDLI	Educational Leadership and Innovation		83		83
EECE	Endorsement: Early Childhood Special Education		6		6
EITS	Endorsement: Information Technology Specialist		1		1
ELEM	Elementary Education		73		73
ELIB	Endorsement - Library Media		7		7
EPHL	Educational Psychology Human Learning		3		3
EPPS	Educational Psychology		2		2
EPSA	Education Psychology - Access (Elem. & Secondary)		4		4
EPSC	Endorsement - School Counselor				0
EPSG	Education Psychology - Gro/Dev/Lrn (Elem. & Secondary)		4		4
EPSY	Educational Psychology		54		54
ERDG	Curriculum and Instruction - Elementary Literacy		11		11
ESLA	Curriculum and Instruction - ESL Adult		13		13
ESLE	Curriculum and Instruction - Bilingual/ESL Elementary		54		54
ESLS	Curriculum and Instruction - Bilingual/ESL Secondary		8		8
ESPD	Endorsement - Special Education		2		2
ETLD	Endorsement - Teacher Linqst DVRSE		2		2
ILTA	Information and Learning Technologies Inst DSG/Adult LRN		39		39
ILTK	Information and Learning Technologies - K-12		35		35
INLT	Information and Learning Technologies		4		4
LBIO	Licensure: Science Biology	2			2
LCFM	Licensure: Couple/Family		1		1
LCHM	Licensure: Science Chemistry				0
LDEL	Licensure: Special Education & Elementary	1			1
LEGL	Licensure: English	3			3
LELE	Licensure: Elementary	8			8
LERT	Licensure: Science Earth	1			1
LMTH	Licensure: Mathematics	1			1
LPRI	Licensure: School Principal		2		2
LSOC	Licensure: Social Studies				0
LSPY	Licensure: School Psychology				0
RALL	Curriculum and Instruction - Reading/Writing K-12		2		2
RELM	Curriculum and Instruction - Reading/Writing K-6		73		73
REND	Endorsement: Reading Teacher		1		1
RENG	Curriculum and Instruction - English Education		13		13
RSEC	Curriculum and Instruction - Reading/Writing 7-12		19		19
SBIL	Curriculum and Instruction - Secondary Bilingual/ESL		5		5
SBIO	Curriculum and Instruction - Science - Biology		5		5
SCHM	Curriculum and Instruction - Science - Chemistry		1		1
SEGL	Curriculum and Instruction - English		22		22
SEMA	Special Education		4		4
SERT	Curriculum & Instruction - Science - Earth		1		1
SFLF	Curriculum and Instruction - Foreign Language - French		1		1
SFLS	Curriculum and Instruction - Foreign Language - Spanish		2		2
SLIB	Information and Learning Technologies - School Librarian		6		6
SMTH	Curriculum and Instruction - Mathematics		8		8
SPDE	Special Education - Generalist End		22		22
SPDG	Special Education Generalist		24		24
SPD1	Special Education - Teacher 1				0
SPD2	Special Education - Teacher 2				0
SPD3	Special Education - Teacher 3				0
SPED	Special Education		5		5
SPSY	School Psychology		49		49
SRDG	Curriculum and Instruction - Secondary Literacy		3		3
SSCI	Curriculum and Instruction - Science - General		4		4

<u>MAJOR CODE</u>		<u>UNDER-GRAD</u>	<u>GRAD</u>	<u>FIRST PROF</u>	<u>TOTAL</u>
SSOC	Curriculum and Instruction - Social Studies		29		29
TECE	Teacher Certification				0
TLIB	Information and Learning Technologies - Teacher Librarian		29		29
COLLEGE OF LIBERAL ARTS AND SCIENCES		5,026	632		5,658
AMEN	Applied Mathematics		61		61
ANTH	Anthropology	84	32		116
BIOL	Biology	828	24		852
CHEM	Chemistry	118	18		136
COMM	Communication	357	15		372
ECON	Economics	112	51		163
ENGL	English	216	55		271
EVSC	Environmental Sciences		43		43
EWRT	English Writing	153			153
FREN	French	17			17
GEOG	Geography	90			90
GEOL	Geology	1			1
HBSC	Health and Behavioral Sciences		27		27
HIST	History	147	64		211
HUMN	Humanities		58		58
INST	Individually Structured	156			156
INTS	International Studies	108			108
ISCI	Integrated Sciences		4		4
MATH	Mathematics	62			62
PHIL	Philosophy	52			52
PHYS	Physics	38			38
PRBU	Pre-Business	267			267
PRCH	Pre-Child Health Associate	9			9
PRCO	Pre-Communication				0
PRDE	Pre-Dentistry	37			37
PRDH	Pre-Dental Hygiene	12			12
PREN	Pre-Engineering	231			231
PRJR	Pre-Journalism	9			9
PRMD	Pre-Medicine	178			178
PRNU	Pre-Nursing	147			147
PRPH	Pre-Pharmacy	98			98
PRPT	Pre-Physical Therapy	19			19
PRVT	Pre-Veterinary Medicine	8			8
PSCI	Political Science	237	61		298
PSYC	Psychology	478	27		505
PSYS	Psychology - BS	153			153
SOCI	Sociology	184	23		207
SOCS	Social Science		35		35
SPAN	Spanish	55	26		81
TECH	Technical Communication		8		8
LAUD	Undetermined	365			365
SCHOOL OF PUBLIC AFFAIRS		20	346		366
CRJU	Criminal Justice	20	42		62
EXPA	Public Administration - Executive		17		17
PADM	Public Administration		236		236
PAWS	Public Administration - Western Slope		9		9
PAFF	Public Affairs		42		42
OTHER		71	474		545
	Non-Degree	71	474		545
DDC SUBTOTAL		8,186	4,601		12,787
ANSCHUTZ MEDICAL CAMPUS					
SCHOOL OF DENTAL MEDICINE		36		197	233
	Dental Hygiene	36			36
	Dental Students			197	197

MAJOR CODE	UNDER- GRAD	GRAD	FIRST PROF	TOTAL
SCHOOL OF MEDICINE		751	737	1,488
Basic Sciences		324		324
Biometrics		21		21
Child Health Associate/Physician Assistant (MS)		37		37
Clinical Science		3		3
DPT Students			134	134
Genetics Counseling		12		12
Medical Students			603	603
Nondegree - Certificate Public Health		32		32
Nondegree - Graduate Basic Sciences		83		83
Nondegree - Graduate Public Health		18		18
Nondegree -Certificate Clinical Sciences		7		7
Physician Assistant Studies (MPAS)		117		117
Public Health		97		97
SCHOOL OF NURSING	394	253	27	674
Baccalaureate Nursing	325			325
Doctor of Nursing Practice			24	24
MS Nursing		152		152
MS Nursing, DNP Track		57		57
Nondegree RN to MS	1			1
Nursing Doctorate			3	3
PhD Nursing		44		44
RN to BS	68			68
SCHOOL OF PHARMACY		49	535	584
Nondegree students		1		1
Pharm.D			535	535
Pharmaceutical Sciences		18		18
Toxicology		30		30
AMC SUBTOTAL	430	1,053	1,496	2,979
UCD TOTAL	8,616	5,654	1,496	15,766

Notes:

Data are end-of-term figures and include AU1 only.

Grey boxes indicate no enrollment at that level for the entire campus.

Source:

Enrollment by Major report, Office of Institutional Research, Planning & Analysis

**ENROLLMENTS BY MAJOR HISTORY - UNDERGRADUATES
FALL 2003-FALL 2007**

MAJOR CODE		Fall 2003	Fall 2004	Fall 2005	Fall 2006	Fall 2007
DOWNTOWN CAMPUS						
COLLEGE OF ARTS AND MEDIA		895	1,005	1,078	1,174	1,161
AVFT	Film and Video Studies	50	1	29	81	88
CRAR	Fine Arts - BFA Program	234	256	239	248	280
FINE	Fine Arts - BA Program	71	75	76	80	87
MUIS	Music Industry Studies	129	133	121	185	107
MUSC	Music	270	313	388	375	375
THFT	Theatre, Film and Television - BFA Program		133	129	120	117
THTE	Theatre, Film and Television - BA Program		10	14	17	16
THTR	Theatre	47	24	19	17	24
AMUD	Undetermined	94	60	63	51	67
COLLEGE OF BUSINESS		1,207	1,311	1,320	1,382	1,364
ACCT	Accounting	219	274	237	263	273
BGEN	General Business	12	12	3	2	0
FNCE	Finance	229	227	228	229	202
INBU	International Business	113	135	142	158	163
INFS	Information Systems	131	95	75	77	65
MGMT	Management	177	224	250	285	279
MKTG	Marketing	169	199	227	223	222
PHRM	Human Resources Management	18	25	24	23	28
BUUD	Undetermined	139	120	134	122	132
SCHOOL OF EDUCATION AND HUMAN DEVELOPMENT				62	55	16
LBIO	Licensure: Science Biology			3	3	2
LCHM	Licensure: Science Chemistry				2	0
LDEL	Licensure: Special Education & Elementary					1
LEGL	Licensure: English			14	8	3
LELE	Licensure: Elementary			35	37	8
LERT	Licensure: Science Earth			1	1	1
LELF	Licensure: French			1		0
LMTH	Licensure: Mathematics			1	1	1
LSCI	Licensure: Science General			3		0
LSOC	Licensure: Social Studies			4	3	0
COLLEGE OF ENGINEERING AND APPLIED SCIENCE		575	552	494	510	528
AMEN	Applied Mathematics	1				
CVEN	Civil Engineering	102	112	113	131	132
CSCI	Computer Science & Engineering	203	131	94	97	87
EEEN	Electrical Engineering	147	159	139	130	137
MCEN	Mechanical Engineering	104	124	123	129	138
ENUD	Undetermined	18	26	25	23	34
COLLEGE OF LIBERAL ARTS AND SCIENCES		4,053	4,273	4,385	4,663	5,026
ANTH	Anthropology	76	71	60	77	84
BIOL	Biology	523	595	691	755	828
CHEM	Chemistry	101	120	124	110	118
COMM	Communication	162	222	314	342	357
ECON	Economics	101	108	99	110	112
ENGL	English	132	171	180	199	216
EWRT	English Writing	110	144	133	134	153
FREN	French	28	19	19	17	17
GEOG	Geography	53	61	69	72	90
GEOL	Geology	15	6	4	2	1
GRMN	German	8	4	1		
HIST	History	136	154	145	157	147
INST	Individually Structured	105	140	125	139	156
INTS	International Studies			32	69	108
MATH	Mathematics	84	97	83	72	62
PHIL	Philosophy	47	52	56	49	52
PHYS	Physics	36	36	42	36	38
PSCI	Political Science	216	251	270	258	237
PRBU	Pre-Business	347	338	296	301	267
PRCH	Pre-Child Health Associate	2	6	5	5	9

MAJOR CODE		Fall 2003	Fall 2004	Fall 2005	Fall 2006	Fall 2007
PRCO	Pre-Communication	151	81	15	8	
	(continued)					
PRDH	Pre-Dental Hygiene	15	14	14	17	12
PRDE	Pre-Dentistry	20	20	25	26	37
PREN	Pre-Engineering	266	214	189	173	231
PRJR	Pre-Journalism	12	13	11	11	9
PRMT	Pre-Medical Technology	3	2	2		
PRMD	Pre-Medicine	106	101	116	163	178
PRNU	Pre-Nursing	99	127	128	141	147
PRPH	Pre-Pharmacy	45	57	60	72	98
PRPT	Pre-Physical Therapy	13	17	20	15	19
PRVT	Pre-Veterinary Medicine	8	5	7	3	8
PSYC	Psychology	376	381	398	425	478
PSYS	Psychology - BS	82	101	121	129	153
SOCI	Sociology	116	144	162	176	184
SPAN	Spanish	30	34	35	40	55
LAUD	Undetermined	429	367	334	360	365
Public Affairs		0	0	0	0	20
CRJU	Criminal Justice					20
OTHER		105	109	107	85	71
	Non-Degree	105	109	107	85	71
DC SUBTOTAL		6,835	7,250	7,446	7,869	8,186
ANSCHUTZ MEDICAL CAMPUS						
SCHOOL OF DENTAL MEDICINE		45	46	48	41	36
	Dental Hygiene	45	46	48	41	36
SCHOOL OF MEDICINE		1				
	Child Health Associate/Physician Assistant	1				
SCHOOL OF NURSING		274	314	374	380	394
	Baccalaureate Nursing	254	282	341	325	325
	RN to BS	16	30	30	51	68
	Nondegree RN to MS	4	2	3	4	1
AMC SUBTOTAL		320	360	422	421	430
UCD TOTAL		7,155	7,610	7,868	8,290	8,616

Notes:

Data are end-of-term figures and include AUI only.

Fall 2003 are census date figures for HSC; all other figures are end-of-term.

Source:

Office of Institutional Research, Planning & Analysis

**ENROLLMENTS BY MAJOR HISTORY - GRADUATE STUDENTS
FALL 2003-FALL 2007**

MAJOR CODE		Fall 2003	Fall 2004	Fall 2005	Fall 2006	Fall 2007
DOWNTOWN CAMPUS						
COLLEGE OF ARCHITECTURE AND PLANNING		441	517	485	501	521
ARCH	Architecture	238	283	257	269	277
ARUR	Architecture in Urban Design	4	9	9	5	6
DSPL	Design and Planning	31	28	31	35	35
LAND	Landscape Architecture	80	82	80	83	97
URRP	Urban and Regional Planning	88	115	108	109	106
COLLEGE OF ARTS AND MEDIA		7	11	17	15	16
RAMS	Recording Arts	7	11	17	15	16
COLLEGE OF BUSINESS		1,329	1,261	1,087	1,033	1,059
ACCT	Accounting	114	122	116	123	123
AMBA	Business Administration - One Year Program				1	
FNCE	Finance	141	117	96	92	83
HLAD	Health Administration	11	14	7	4	9
INBU	International Business	43	45	40	47	43
INFS	Information Systems	152	104	82	69	62
MBAC	Master of Business Administration - Cohort Program	73	22	11	7	1
MBAD	Master of Business Administration	631	679	596	560	599
MBAH	Master of Business Administration Health	69	67	62	55	60
MGMT	Management		1			
MKTG	Marketing	46	46	41	36	35
MSIS	Management Sciences - Information Systems		1			
ORMG	Organization Management	41	33	23	22	29
PHIS	Computer Science and Information Systems	8	10	13	17	14
XMBA	Master of Business Administration - Executive Program					1
COLLEGE OF ENGINEERING AND APPLIED SCIENCE		352	368	333	319	312
CMSC	Computer Science	149	163	134	99	83
CVEN	Civil Engineering	101	97	98	93	90
EEEN	Electrical Engineering	42	36	39	58	65
MAEG	Engineering	29	38	31	31	42
MCEN	Mechanical Engineering	19	22	21	28	23
PHCS	Computer Science and Information Systems	12	12	10	10	9
SCHOOL OF EDUCATION AND HUMAN DEVELOPMENT		1,354	1,389	1,233	1,181	1,241
ADAP	Educational Leadership and Innovation - Access	2	2			
ADSC	Administration Supervision Curriculum Developmen					
ALIB	Information/Learning Technology - Alternative School Librarian			1		5
ALPE	Administration Leadership and Professional Studies			57	58	74
ALPS	Administration Leadership and Professional Studies	114	98	80	65	42
CACR	Counseling Psychology and Counselor Education - Agency CAF			3	6	6
CAEP	Counseling Psychology and Counselor Education - Agency EAF			1	3	5
CAIN	Counseling Psychology and Counselor Education - INT		1	11	12	21
CAML	Counseling Psychology and Counselor Education Agency MUI			4	4	5
CCFC	Counseling Psychology and Counselor Education - Family		1	32	56	69
CEAP	Counseling Psychology and Counselor Education - Access	1			1	1
CIAP	Curriculum and Instruction - Access	1		1		
CIED	Curriculum and Instruction	306	252	123	45	14
CIEN	Curriculum and Instruction - English (Secondary)	5	2	5	6	4
CILT	Certificate: Inst Design and Adult Learning			2		2
CIMA	Curriculum and Instruction - Mathematics (Elem. & Secondary)	5	14	14	7	12
CIMH	Curriculum and Instruction - Mental Health (Elem. & Secondary)	1	8	8	3	
CISC	Curriculum and Instruction - Science (Elem. & Secondary)	1	3	8	7	5
CISS	Curriculum and Instruction - Social Studies (Secondary)	1	5	3	3	2
CITE	Curriculum and Instruction - Technology (Elem. & Secondary)	3	6	2	2	3
CPCE	Counseling Psychology and Counselor Education	181	194	96	41	18
CPEL	Curriculum and Instruction - Elementary			7	12	7
CPMA	Curriculum and Instruction - Mathematics			5	10	7
CPSI	Curriculum and Instruction - Science			3	10	11
CPSO	Curriculum and Instruction - Social Studies			5	10	5
CSCH	Counseling Psychology and Counselor Education - Schoo		1	18	36	44
DEGL	Curriculum and Instruction - Secondary English Dual Lic	2	2	1	1	3

MAJOR CODE		Fall 2003	Fall 2004	Fall 2005	Fall 2006	Fall 2007
DELE	Curriculum and Instruction - Elementary Educ Dual Lic	12	23	15	17	22
DSCI	Curriculum and Instruction - Science (General Special Education) (continued)		1	1		
DSOC	Curriculum and Instruction - Social Studies (Special Education)		1	2	1	5
EBIL	Curriculum and Instruction - Belm/Bilingual/ESI	4	15	12	8	12
ECAP	Early Childhood Education - Access	17	17	10		
ECED	Early Childhood Education	67	71	41	20	24
ECSE	Early Childhood Special Education			39	68	77
EDLI	Educational Leadership and Innovation	89	84	81	82	83
EECE	Endorsement - Early Childhood Special Education	1		4	8	6
EITS	Endorsement: Information Technology Specialis					1
ELEM	Elementary Education	123	117	71	73	73
ELIB	Endorsement - Library Media	2	3	1	2	7
ELSE	Curriculum and Instruction - BIL /ESL Elem		1			
EPHL	Educational Psychology Human Learning					3
EPPS	Educational Psychology					2
EPSA	Education Psychology - Access (Elem. & Secondary)	4	5	6	1	4
EPSC	Endorsement - School Counselor	1	3	4	3	
EPSG	Education Psychology - Gro/Dev/Lrn (Elem. & Secondary)	4	11	8	5	4
EPSY	Educational Psychology	41	56	50	43	54
ERDG	Curriculum and Instruction - Elementary Literacy	8	15	15	14	11
ESLA	Curriculum and Instruction - ESL Adult			5	8	13
ESLE	Curriculum and Instruction - Bilingual/ESL Elementary			22	41	54
ESLS	Curriculum and Instruction - Bilingual/ESL Secondary			3	5	8
ESPD	Endorsement - Special Education	1	2	5	6	2
ETLD	Endorsement - Teacher Linqst DVRSE	13	6	5	3	2
ILTA	Information and Learning Technologies, Instruction Design/Adult Learne		2	9	28	39
ILTK	Information and Learning Technologies - K-12			25	40	35
INLT	Information and Learning Technologies	114	107	50	10	4
LCFM						1
LPRI	Licensure: School Principal	6	8	1	2	2
LSPY	Licensure: School Psychology	8	8	7	1	
NWEA	Non-Degree - Access	3				
RALL	Curriculum and Instruction - Reading/Writing K-12			3	3	2
RELM	Curriculum and Instruction - Reading/Writing K-6			35	67	73
REND	Endorsement: Reading Teacher		2	3	5	1
RENG	Curriculum and Instruction - English Education			5	10	13
RSEC	Curriculum and Instruction - Reading/Writing 7-12			15	20	19
SBIL	Curriculum and Instruction - Secondary Bilingual/ESI		6	5	5	5
SBIO	Curriculum and Instruction - Science - Biology	10	10	5	6	5
SCHM	Curriculum and Instruction - Science - Chemistry	1	1		1	1
SEGL	Curriculum and Instruction - English	24	35	14	17	22
SEMA	Special Education					4
SERT	Curriculum and Instruction - Science - Earth		1	1		1
SFLF	Curriculum and Instruction - Foreign Language - French	1			1	1
SFLG	Curriculum and Instruction - Foreign Language - German	2				
SFLS	Curriculum and Instruction - Foreign Language - Spanish	2	2	3	3	2
SLIB	Information and Learning Technologies - School Librarian			3	5	6
SMTH	Curriculum and Instruction - Mathematics	12	13	7	5	8
SPDE	Special Education - Generalist End					22
SPDG	Special Education Generalist			20	34	24
SPD1	Special Education - Teacher 1	24	43	16	3	
SPD2	Special Education - Teacher 2	15	12	8	1	
SPD3	Special Education - Teacher 3	2	1		1	
SPED	Special Education	35	17	11	6	5
SPHY	Curriculum and Instruction - Science - Physics	2	1			
SPSY	School Psychology	57	59	61	60	49
SRDG	Curriculum and Instruction - Secondary Literacy		2	2	4	3

MAJOR CODE		Fall 2003	Fall 2004	Fall 2005	Fall 2006	Fall 2007
	(continued)					
SSCI	Curriculum and Instruction - Science - General	2	9	5	2	4
SSOC	Curriculum and Instruction - Social Studies	14	22	12	14	29
TCAP	Teacher Certification - Access					
TECE	Teacher Certification	10	8	4	1	
TLIB	Information and Learning Technologies - Teacher Librarian			13	20	29
COLLEGE OF LIBERAL ARTS AND SCIENCES		615	645	668	653	632
AMEN	Applied Mathematics	58	65	74	62	61
ANTH	Anthropology	39	28	33	38	32
BIOL	Biology	25	26	32	27	24
CHEM	Chemistry	16	20	19	16	18
COMM	Communication	22	16	16	12	15
ECON	Economics	34	41	38	48	51
ENGL	English	51	68	79	63	55
EVSC	Environmental Sciences	39	39	33	33	43
HBSC	Health and Behavioral Sciences	35	32	30	28	27
HIST	History	50	53	60	66	64
HUMN	Humanities	63	61	53	58	58
ISCI	Integrated Sciences	17	18	14	7	4
PSCI	Political Science	39	48	38	53	61
PSYC	Psychology	36	31	23	28	27
SOCI	Sociology	35	27	45	42	23
SOCS	Social Science	35	52	57	47	35
SPAN	Spanish			10	14	26
TECH	Technical Communication	21	20	14	11	8
SCHOOL OF PUBLIC AFFAIRS		359	340	297	317	346
AMPA	Public Administration - Accelerated		1	1	1	
CRJU	Criminal Justice	49	49	39	37	42
EXPA	Public Administration - Executive	26	27	21	21	17
PADM	Public Administration	218	208	186	203	236
PAWS	Public Administration - Western Slope	8	7	10	7	9
PAFF	Public Affairs	57	48	40	48	42
PADC	Public Administration - Certificate	1				
OTHER		678	535	485	486	474
	Non-Degree	678	535	485	486	474
DC SUBTOTAL		5,135	5,066	4,605	4,505	4,601
ANSCHUTZ MEDICAL CAMPUS						
SCHOOL OF MEDICINE		728	712	704	697	751
	Graduate students	596	613	547	523	494
	MPAS			40	79	117
	Non-Degree	132	99	117	95	140
SCHOOL OF NURSING		228	231	261	295	253
	Graduate students	228	231	261	295	253
SCHOOL OF PHARMACY		42	50	48	42	49
	Graduate students	40	48	45	41	48
	Non-Degree	2	2	3	1	1
AMC SUBTOTAL		998	993	1,013	1,034	1,053
UCD TOTAL		6,133	6,059	5,618	5,539	5,654

Notes:

Data are end-of-term figures and include AU1 only.

Fall 2003 are census date figures for HSC; all other figures are end-of-term.

Source:

Office of Institutional Research, Planning & Analysis

**ENROLLMENTS BY MAJOR HISTORY - FIRST PROFESSIONAL
FALL 2003-FALL 2007**

	Fall <u>2003</u>	Fall <u>2004</u>	Fall <u>2005</u>	Fall <u>2006</u>	Fall <u>2007</u>
ANSCHUTZ MEDICAL CAMPUS					
SCHOOL OF DENTAL MEDICINE	164	170	182	192	197
Dental Students	164	170	182	192	197
SCHOOL OF MEDICINE	526	620	657	720	737
Medical Students	526	555	566	585	603
DPT Students	na	65	91	135	134
SCHOOL OF NURSING	116	127	57	17	27
Doctor of Nursing Practice			50	14	24
Nursing Doctorate Students	116	127	7	3	3
SCHOOL OF PHARMACY	443	485	515	513	535
PharmD Students	443	485	515	513	535
TOTAL	1,249	1,402	1,411	1,442	1,496

Notes:

Data are end-of-term figures and include AU1 only.

Source:

Office of Institutional Research, Planning & Analysis

**ETHNIC DISTRIBUTION OF HEADCOUNT STUDENTS
FALL SEMESTERS**

3/28/2008

	ASIAN AMERICAN		AFRICAN AMERICAN		HISPANIC		NATIVE AMERICAN		MINORITY TOTAL		WHITE		NON-RES. ALIEN		TOTAL			
	N	%	N	%	N	%	N	%	N	%	N	%	N	%	N	%		
DOWNTOWN CAMPUS																		
FALL 2003	973	8%	406	3%	1,046	9%	112	1%		2,537	21%		8,877	74%	556	5%	11,970	100%
Undergraduate	738	11%	292	4%	731	11%	84	1%		1,845	27%		4,781	70%	209	3%	6,835	100%
Graduate	235	5%	114	2%	315	6%	28	1%		692	13%		4,096	80%	347	7%	5,135	100%
FALL 2004	1,004	8%	428	3%	1,080	9%	105	1%		2,617	21%		9,207	75%	492	4%	12,316	100%
Undergraduate	754	10%	316	4%	779	11%	85	1%		1,934	27%		5,122	71%	194	3%	7,250	100%
Graduate	250	5%	112	2%	301	6%	20	0%		683	13%		4,085	81%	298	6%	5,066	100%
FALL 2005	944	8%	425	4%	1,123	9%	99	1%		2,591	22%		9,051	75%	409	3%	12,051	100%
Undergraduate	746	10%	315	4%	863	12%	75	1%		1,999	27%		5,324	72%	123	2%	7,446	100%
Graduate	198	4%	110	2%	260	6%	24	1%		592	13%		3,727	81%	286	6%	4,605	100%
FALL 2006	1,021	8%	503	4%	1,193	10%	105	1%		2,822	23%		9,140	74%	412	3%	12,374	100%
Undergraduate	821	10%	387	5%	934	12%	77	1%		2,219	28%		5,551	71%	99	1%	7,869	100%
Graduate	200	4%	116	3%	259	6%	28	1%		603	13%		3,589	80%	313	7%	4,505	100%
FALL 2007	1,063	8%	524	4%	1,238	10%	104	1%		2,929	23%		9,338	73%	520	4%	12,787	100%
Undergraduate	879	11%	401	5%	991	12%	80	1%		2,351	29%		5,659	69%	176	2%	8,186	100%
Graduate	184	4%	123	3%	247	5%	24	1%		578	13%		3,679	80%	344	7%	4,601	100%
ANSCHUTZ MEDICAL CAMPUS																		
	N	%	N	%	N	%	N	%		N	%		N	%	N	%	N	%
FALL 2003	216	8%	88	3%	161	6%	15	1%		480	19%		2,032	79%	55	2%	2,567	100%
Undergraduate	13	4%	8	3%	24	8%	5	2%		50	16%		266	84%	0	0%	316	100%
Graduate	53	5%	14	1%	46	5%	2	0%		115	11%		836	83%	51	5%	1,002	100%
1st Professional	150	12%	66	5%	91	7%	8	1%		315	25%		930	74%	4	0%	1,249	100%
FALL 2004	227	8%	80	3%	185	7%	17	1%		509	18%		2,194	80%	52	2%	2,755	100%
Undergraduate	20	6%	7	2%	23	6%	4	1%		54	15%		305	85%	1	0%	360	100%
Graduate	58	6%	18	2%	58	6%	1	0%		135	14%		810	82%	48	5%	993	100%
1st Professional	149	11%	55	4%	104	7%	12	1%		320	23%		1,079	77%	3	0%	1,402	100%
FALL 2005	210	7%	74	3%	173	6%	17	1%		474	17%		2,306	81%	69	2%	2,849	100%
Undergraduate	18	4%	9	2%	29	7%	3	1%		59	14%		360	85%	6	1%	425	100%
Graduate	48	5%	15	1%	46	5%	3	0%		112	11%		842	83%	59	6%	1,013	100%
1st Professional	144	10%	50	4%	98	7%	11	1%		303	21%		1,104	78%	4	0%	1,411	100%
FALL 2006	226	8%	79	3%	158	5%	18	1%		481	17%		2,329	80%	87	3%	2,897	100%
Undergraduate	11	3%	13	3%	28	7%	4	1%		56	13%		358	85%	7	2%	421	100%
Graduate	51	5%	15	1%	41	4%	5	0%		112	11%		852	82%	70	7%	1,034	100%

**ETHNIC DISTRIBUTION OF HEADCOUNT STUDENTS
FALL SEMESTERS**

3/28/2008

	ASIAN AMERICAN		AFRICAN AMERICAN		HISPANIC		NATIVE AMERICAN		MINORITY TOTAL		WHITE		NON-RES. ALIEN		TOTAL	
	N	%	N	%	N	%	N	%	N	%	N	%	N	%	N	%
1st Professional	164	11%	51	4%	89	6%	9	1%	313	22%	1,119	78%	10	1%	1,442	100%
FALL 2007	237	8%	79	3%	153	5%	28	1%	497	17%	2,402	81%	80	3%	2,979	100%
Undergraduate	18	4%	14	3%	23	5%	4	1%	59	14%	365	85%	6	1%	430	100%
Graduate	61	6%	12	1%	42	4%	9	1%	124	12%	867	82%	62	6%	1,053	100%
1st Professional	158	11%	53	4%	88	6%	15	1%	314	21%	1,170	78%	12	1%	1,496	100%
UCD TOTAL																
	N	%	N	%	N	%	N	%	N	%	N	%	N	%	N	%
FALL 2003	1,189	8%	494	3%	1,207	8%	127	1%	3,017	21%	10,909	75%	611	4%	14,537	100%
Undergraduate	751	11%	300	4%	755	11%	89	1%	1,895	26%	5,047	71%	209	3%	7,151	100%
Graduate	288	5%	128	2%	361	6%	30	0%	807	13%	4,932	80%	398	6%	6,137	100%
1st Professional	150	12%	66	5%	91	7%	8	1%	315	25%	930	74%	4	0%	1,249	100%
FALL 2004	1,231	8%	508	3%	1,265	8%	122	1%	3,126	21%	11,401	76%	544	4%	15,071	100%
Undergraduate	774	10%	323	4%	802	11%	89	1%	1,988	26%	5,427	71%	195	3%	7,610	100%
Graduate	308	5%	130	2%	359	6%	21	0%	818	14%	4,895	81%	346	6%	6,059	100%
1st Professional	149	11%	55	4%	104	7%	12	1%	320	23%	1,079	77%	3	0%	1,402	100%
FALL 2005	1,154	8%	499	3%	1,296	9%	116	1%	3,065	21%	11,357	76%	478	3%	14,900	100%
Undergraduate	764	10%	324	4%	892	11%	78	1%	2,058	26%	5,684	72%	129	2%	7,871	100%
Graduate	246	4%	125	2%	306	5%	27	0%	704	13%	4,569	81%	345	6%	5,618	100%
1st Professional	144	10%	50	4%	98	7%	11	1%	303	21%	1,104	78%	4	0%	1,411	100%
FALL 2006	1,247	8%	582	4%	1,351	9%	123	1%	3,303	22%	11,469	75%	499	3%	15,271	100%
Undergraduate	832	10%	400	5%	962	12%	81	1%	2,275	27%	5,909	71%	106	1%	8,290	100%
Graduate	251	5%	131	2%	300	5%	33	1%	715	13%	4,441	80%	383	7%	5,539	100%
1st Professional	164	11%	51	4%	89	6%	9	1%	313	22%	1,119	78%	10	1%	1,442	100%
FALL 2007	1,300	8%	603	4%	1,391	9%	132	1%	3,426	22%	11,740	74%	600	4%	15,766	100%
Undergraduate	897	10%	415	5%	1,014	12%	84	1%	2,410	28%	6,024	70%	182	2%	8,616	100%
Graduate	245	4%	135	2%	289	5%	33	1%	702	12%	4,546	80%	406	7%	5,654	100%
1st Professional	158	11%	53	4%	88	6%	15	1%	314	21%	1,170	78%	12	1%	1,496	100%

Notes:

Unknowns included in WHITE count.

N = student headcount

Data are end-of-term figures and include AU1 only.

Source:

Enrollment Reports, Office of Institutional Research, Planning & Analysis

**Ethnic Distribution of Headcount Students by School/College and Level
Fall Semesters**

3/28/2008

	Minority					White					International					All Students				
	2003	2004	2005	2006	2007	2003	2004	2005	2006	2007	2003	2004	2005	2006	2007	2003	2004	2005	2006	2007
Arts and Media	167	180	201	200	207	722	827	887	978	958	13	9	7	11	0	902	1,016	1,095	1,189	1,165
Undergraduate	165	178	197	199	206	717	818	876	967	944	13	9	5	8		895	1,005	1,078	1,174	1,150
Graduate	2	2	4	1	1	5	9	11	11	14	0	0	2	3		7	11	17	15	15
Architecture & Planning	42	48	46	52	47	367	435	406	426	441	32	34	33	23	0	441	517	485	501	488
Graduate	42	48	46	52	47	367	435	406	426	441	32	34	33	23		441	517	485	501	488
Business	505	574	518	553	532	1,821	1,836	1,752	1,712	1,723	210	162	137	150	0	2,536	2,572	2,407	2,415	2,255
Undergraduate	337	389	366	410	393	801	858	913	935	922	69	64	41	37		1,207	1,311	1,320	1,382	1,315
Graduate	168	185	152	143	139	1,020	978	839	777	801	141	98	96	113		1,329	1,261	1,087	1,033	940
Education	157	153	132	149	152	1,181	1,219	1,151	1,080	1,095	16	17	12	7	0	1,354	1,389	1,295	1,236	1,247
Undergraduate	0	0	8	6	0	0	0	53	48	16	0	0	1	1		0	0	62	55	16
Graduate	157	153	124	143	152	1,181	1,219	1,098	1,032	1,079	16	17	11	6		1,354	1,389	1,233	1,181	1,231
Engineering	227	217	192	206	198	591	600	541	521	531	109	103	94	102	0	927	920	827	829	729
Undergraduate	154	143	129	144	150	379	374	341	352	365	42	35	24	14		575	552	494	510	515
Graduate	73	74	63	62	48	212	226	200	169	166	67	68	70	88		352	368	333	319	214
Liberal Arts & Sciences	1,246	1,287	1,363	1,534	1,670	3,296	3,518	3,601	3,696	3,843	126	113	89	86	0	4,668	4,918	5,053	5,316	5,513
Undergraduate	1,165	1,200	1,272	1,441	1,576	2,808	3,002	3,069	3,185	3,354	80	71	44	37		4,053	4,273	4,385	4,663	4,930
Graduate	81	87	91	93	94	488	516	532	511	489	46	42	45	49		615	645	668	653	583
Public Affairs	66	58	49	45	57	263	257	231	249	275	30	25	17	23	0	359	340	297	317	321
Undergraduate					11					9						0	0	0	0	20
Graduate	66	58	49	45	46	263	257	231	249	275	30	25	17	23		359	340	297	317	321
Non Degree	127	100	90	83	66	636	515	482	478	298	20	29	20	10	0	783	644	592	571	364
Undergraduate	24	24	27	19	15	76	70	72	64	49	5	15	8	2		105	109	107	85	64
Graduate	103	76	63	64	51	560	445	410	414	249	15	14	12	8		678	535	485	486	300
DC Total	2,537	2,617	2,591	2,822	2,929	8,877	9,207	9,051	9,140	9,173	556	492	409	412	0	11,970	12,316	12,051	12,374	12,102
Undergraduate	1,845	1,934	1,999	2,219	2,351	4,781	5,122	5,324	5,551	5,659	209	194	123	99	0	6,835	7,250	7,446	7,869	8,010
Graduate	692	683	592	603	578	4,096	4,085	3,727	3,589	3,514	347	298	286	313	0	5,135	5,066	4,605	4,505	4,092

	Minority					White					International					All Students				
	2003	2004	2005	2006	2007	2003	2004	2005	2006	2007	2003	2004	2005	2006	2007	2003	2004	2005	2006	2007
Medicine	190	212	189	204	210	1,029	1,088	1,130	1,156	1,227	36	32	42	57	51	1,255	1,332	1,361	1,417	1,488
Undergraduate	0	0	0	0	0	1	0	0	0	0	0	0	0	0	0	1	0	0	0	0
Graduate	65	74	57	57	69	498	508	489	494	499	33	31	41	51	43	596	613	587	602	611
First Professional	103	115	110	124	121	422	505	547	591	610	1	0	0	5	6	526	620	657	720	737
Non Degree	22	23	22	23	20	108	75	94	71	118	2	1	1	1	2	132	99	117	95	140
Dentistry	32	32	35	31	37	177	184	193	200	193	0	0	2	2	3	209	216	230	233	233
Undergraduate	5	6	7	5	7	40	40	40	35	28	0	0	1	1	1	45	46	48	41	36
First Professional	27	26	28	26	30	137	144	153	165	165	0	0	1	1	2	164	170	182	192	197
Nursing	82	97	88	83	81	531	570	595	598	583	5	5	9	11	10	618	672	692	692	674
Undergraduate	45	48	52	50	52	225	263	314	320	336	0	1	5	6	5	270	312	371	376	393
Graduate	22	32	26	27	27	201	195	231	263	221	5	4	4	5	5	228	231	261	295	253
First Professional	13	17	10	5	2	103	110	47	12	25	0	0	0	0	0	116	127	57	17	27
Non Degree	2	0	0	1	0	2	2	3	3	1	0	0	0	0	0	4	2	3	4	1
Pharmacy	176	168	162	163	169	295	352	385	375	399	14	15	16	17	16	485	535	563	555	584
Graduate	4	6	6	4	7	25	30	26	24	29	11	12	13	13	12	40	48	45	41	48
First Professional	172	162	155	158	161	268	320	357	351	370	3	3	3	4	4	443	485	515	513	535
Non Degree	0	0	1	1	1	2	2	2	0	0	0	0	0	0	0	2	2	3	1	1
AMC Total	480	509	474	481	497	2,032	2,194	2,303	2,329	2,402	55	52	69	87	80	2,567	2,755	2,846	2,897	2,979
Undergraduate	50	54	59	55	59	266	303	354	355	364	0	1	6	7	6	316	358	419	417	429
Graduate	91	112	89	88	103	724	733	746	781	749	49	47	58	69	60	864	892	893	938	912
First Professional	315	320	303	313	314	930	1,079	1,104	1,119	1,170	4	3	4	10	12	1,249	1,402	1,411	1,442	1,496
Non Degree	24	23	23	25	21	112	79	99	74	119	2	1	1	1	2	138	103	123	100	142

Fall 2003 are census date figures for HSC; all other figures are end-of-term.
Figures are AU1 only.

AGE DISTRIBUTION

FALL 2007

DOWNTOWN CAMPUS												
	UNDERGRADUATE			GRADUATE			FIRST PROFESSIONAL			TOTAL		
	N	%	CUM %	N	%	CUM %	N	%	CUM %	N	%	CUM %
19 & Under	2,053	25.1%	25.1%	0	0.0%	0.0%				2,053	16.1%	16.1%
20-24	3,870	47.3%	72.4%	635	13.8%	13.8%				4,505	35.2%	51.3%
25-29	1,252	15.3%	87.6%	1,583	34.4%	48.2%				2,835	22.2%	73.5%
30-34	459	5.6%	93.3%	925	20.1%	68.3%				1,384	10.8%	84.3%
35-39	263	3.2%	96.5%	584	12.7%	81.0%				847	6.6%	90.9%
40-44	126	1.5%	98.0%	325	7.1%	88.1%				451	3.5%	94.4%
45-49	85	1.0%	99.0%	250	5.4%	93.5%				335	2.6%	97.1%
50-54	48	0.6%	99.6%	169	3.7%	97.2%				217	1.7%	98.7%
55-59	19	0.2%	99.9%	101	2.2%	99.4%				120	0.9%	99.7%
60 & over	11	0.1%	100.0%	29	0.6%	100.0%				40	0.3%	100.0%
TOTAL	8,186	100.0%	100.0%	4,601	100.0%	100.0%				12,787	100.0%	100.0%
AVERAGE AGE		23.6			32.9						27.2	

ANSCHUTZ MEDICAL CAMPUS												
	UNDERGRADUATE			GRADUATE			FIRST PROFESSIONAL			TOTAL		
	N	%	CUM %	N	%	CUM %	N	%	CUM %	N	%	CUM %
19 & Under	0	0.0%	0.0%	0	0.0%	0.0%	541	6.6%	6.6%	541	4.2%	4.2%
20-24	103	1.3%	1.3%	127	2.8%	2.8%	637	7.8%	14.4%	867	6.8%	11.0%
25-29	143	1.7%	3.0%	392	8.5%	11.3%	180	2.2%	16.6%	715	5.6%	16.6%
30-34	92	1.1%	4.1%	246	5.3%	16.6%	67	0.8%	17.4%	405	3.2%	19.8%
35-39	48	0.6%	4.7%	117	2.5%	19.2%	36	0.4%	17.8%	201	1.6%	21.3%
40-44	26	0.3%	5.0%	57	1.2%	20.4%	18	0.2%	18.1%	101	0.8%	22.1%
45-49	10	0.1%	5.2%	44	1.0%	21.4%	12	0.1%	18.2%	66	0.5%	22.6%
50-54	7	0.1%	5.2%	47	1.0%	22.4%	4	0.0%	18.3%	58	0.5%	23.1%
55-59	1	0.0%	5.3%	20	0.4%	22.8%	1	0.0%	18.3%	22	0.2%	23.3%
60 & over	0	0.0%	5.3%	3	0.1%	22.9%		0.0%	18.3%	3	0.0%	23.3%
TOTAL	430	5.3%	5.3%	1,053	22.9%	22.9%	1,496	18.3%	18.3%	2,979	23.3%	23.3%
AVERAGE AGE		29.8			32.1			27.1			29.3	

UCD TOTAL												
	UNDERGRADUATE			GRADUATE			FIRST PROFESSIONAL			TOTAL		
	N	%	CUM %	N	%	CUM %	N	%	CUM %	N	%	CUM %
19 & Under	2,053	25.1%	25.1%	0	0.0%	0.0%	541	6.6%	6.6%	2,594	20.3%	20.3%
20-24	3,973	48.5%	73.6%	762	16.6%	16.6%	637	7.8%	14.4%	5,372	42.0%	62.3%
25-29	1,395	17.0%	90.7%	1,975	42.9%	59.5%	180	2.2%	16.6%	3,550	27.8%	90.1%
30-34	551	6.7%	97.4%	1,171	25.5%	84.9%	67	0.8%	17.4%	1,789	14.0%	104.1%
35-39	311	3.8%	101.2%	701	15.2%	100.2%	36	0.4%	17.8%	1,048	8.2%	112.2%
40-44	152	1.9%	103.0%	382	8.3%	108.5%	18	0.2%	18.1%	552	4.3%	116.6%
45-49	95	1.2%	104.2%	294	6.4%	114.9%	12	0.1%	18.2%	401	3.1%	119.7%
50-54	55	0.7%	104.9%	216	4.7%	119.6%	4	0.0%	18.3%	275	2.2%	121.9%
55-59	20	0.2%	105.1%	121	2.6%	122.2%	1	0.0%	18.3%	142	1.1%	123.0%
60 & over	11	0.1%	105.3%	32	0.7%	122.9%	0	0.0%	18.3%	43	0.3%	123.3%
TOTAL	8,616	105.3%	105.3%	5,654	122.9%	122.9%	1,496	18.3%	18.3%	15,766	123.3%	123.3%
AVERAGE AGE		23.9			32.8			27.1			27.6	

Notes:

Data are end-of-term figures and include AU1 only.

N = student headcount

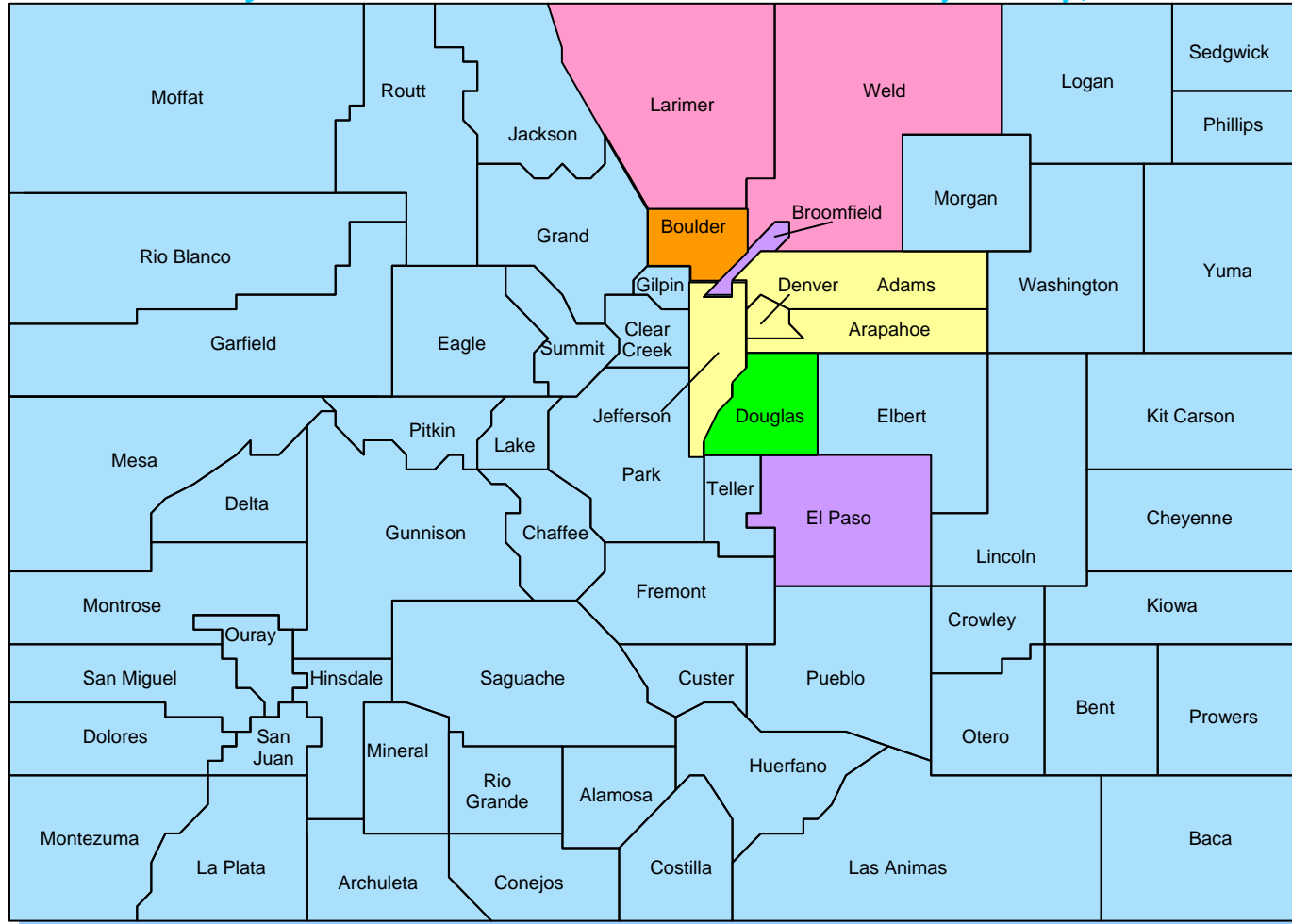
CUM % = cumulative percent

Source:

Age Distribution Report

Office of Institutional Research, Planning & Analysis

University of Colorado Denver Student Headcount by County, Fall 2007

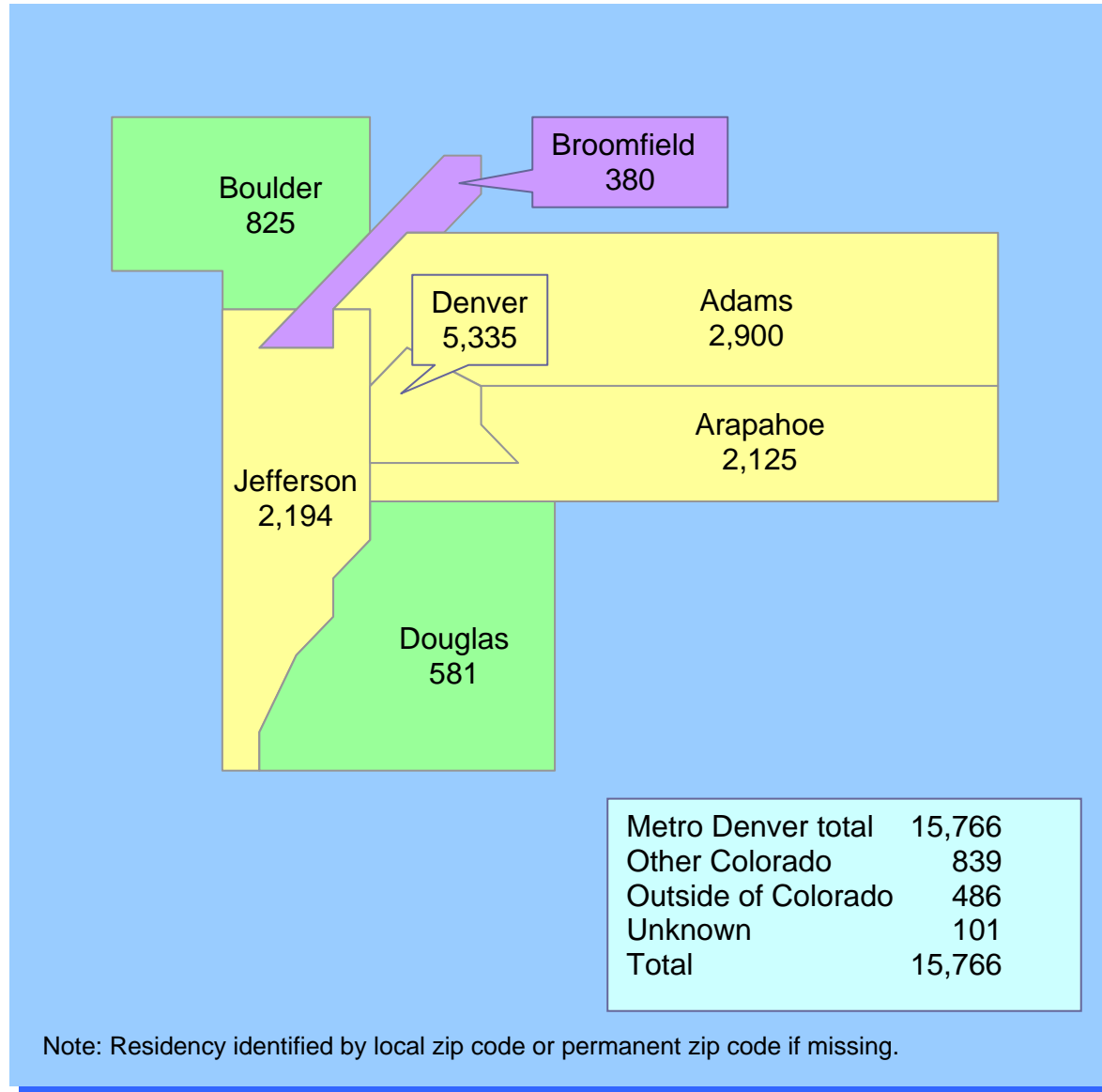


Legend

- 1000+
- 600-999
- 500-599
- 100-499
- 50-99
- Less than 50

Note: Residency identified by local zip code or permanent zip code if missing.

Student Headcount by Metro Denver County Fall 2007



**AVERAGE STUDENT CREDIT HOUR LOAD
BY LEVEL FOR FALL SEMESTERS**

DOWNTOWN CAMPUS												
FALL SEMESTER/ QUARTER	UNDERGRADUATE			GRADUATE			First Professional			TOTAL		
	STUDENTS	SCH	AVG SCH PER HC	STUDENTS	SCH	AVG SCH PER HC	STUDENTS	SCH	AVG SCH PER HC	STUDENTS	SCH	AVG SCH PER HC
1998	5,952	66,911.0	11.24	4,979	30,046.0	6.03				10,931	96,957.0	8.87
1999	6,124	68,559.0	11.20	4,697	28,382.0	6.04				10,821	96,941.0	8.96
2000	6,409	73,729.0	11.50	4,641	28,361.0	6.11				11,050	102,090.0	9.24
2001	6,474	74,489.0	11.51	4,807	30,391.0	6.32				11,281	104,880.0	9.30
2002	6,697	79,143.0	11.82	5,130	32,932.0	6.42				11,827	112,075.0	9.48
2003	6,835	80,553.0	11.79	5,135	33,548.5	6.53				11,970	114,101.5	9.53
2004	7,250	85,472.0	11.79	5,066	32,967.0	6.51				12,316	118,439.0	9.62
2005	7,446	87,908.0	11.81	4,605	29,551.0	6.42				12,051	117,459.0	9.75
2006	7,869	91,283.0	11.60	4,505	29,267.0	6.50				12,374	120,550.0	9.74
2007	8,186	96,619.0	11.80	4,601	29,709.0	6.46				12,787	126,328.0	9.88
ANSCHUTZ MEDICAL CAMPUS												
FALL SEMESTER/ QUARTER	UNDERGRADUATE			GRADUATE			First Professional			TOTAL		
	STUDENTS	SCH	AVG SCH PER HC	STUDENTS	SCH	AVG SCH PER HC	STUDENTS	SCH	AVG SCH PER HC	STUDENTS	SCH	AVG SCH PER HC
1998	211	n/a	n/a	1,155	n/a	n/a	949	n/a	n/a	2,315	n/a	n/a
1999	233	n/a	n/a	1,012	n/a	n/a	1,025	n/a	n/a	2,270	n/a	n/a
2000	251	n/a	n/a	931	n/a	n/a	1,043	n/a	n/a	2,225	n/a	n/a
2001	260	n/a	n/a	929	n/a	n/a	1,128	n/a	n/a	2,317	n/a	n/a
2002 (CENSUS)	310	n/a	n/a	1,016	n/a	n/a	1,197	n/a	n/a	2,523	n/a	n/a
2003 (CENSUS)	320	n/a	n/a	998	n/a	n/a	1,249	n/a	n/a	2,567	n/a	n/a
2004	360	n/a	n/a	993	n/a	n/a	1,402	n/a	n/a	2,755	n/a	n/a
2005	422	6,045.0	14.32	1,016	6,437.5	6.34	1,411	27,372.5	19.40	2,849	39,855.0	13.99
2006	421	6,437.5	15.29	1,034	7,353.9	7.11	1,442	27,522.1	19.09	2,897	41,313.5	14.26
2007	430	6,285.0	14.62	1,053	7,251.0	6.89	1,496	30,033.0	20.08	2,979	43,569.0	14.63

UCD TOTAL												
FALL SEMESTER/ QUARTER	UNDERGRADUATE			GRADUATE			First Professional			TOTAL		
	STUDENTS	SCH	AVG SCH PER HC	STUDENTS	SCH	AVG SCH PER HC	STUDENTS	SCH	AVG SCH PER HC	STUDENTS	SCH	AVG SCH PER HC
1998	6,163	n/a	n/a	6,134	n/a	n/a	949	n/a	n/a	13,246	n/a	n/a
1999	6,357	n/a	n/a	5,709	n/a	n/a	1,025	n/a	n/a	13,091	n/a	n/a
2000	6,660	n/a	n/a	5,572	n/a	n/a	1,043	n/a	n/a	13,275	n/a	n/a
2001	6,734	n/a	n/a	5,736	n/a	n/a	1,128	n/a	n/a	13,598	n/a	n/a
2002	7,007	n/a	n/a	6,146	n/a	n/a	1,197	n/a	n/a	14,350	n/a	n/a
2003	7,155	n/a	n/a	6,133	n/a	n/a	1,249	n/a	n/a	14,537	n/a	n/a
2004	7,610	n/a	n/a	6,059	n/a	n/a	1,402	n/a	n/a	15,071	n/a	n/a
2005	7,868	93,953.0	11.94	5,621	35,988.5	6.40	1,411	27,372.5	19.40	14,900	157,314.0	10.56
2006	8,290	97,720.5	11.79	5,539	36,620.9	6.61	1,442	27,522.1	19.09	15,271	161,863.5	10.60
2007	8,616	102,904.0	11.94	5,654	36,960.0	6.54	1,496	30,033.0	20.08	15,766	169,897.0	10.78

Notes:

Data are end-of-term figures and include AU1 only; SCH = Student Credit Hours; HC = Headcount students

Prior to fall 2005, total term SCH for the Health Sciences Center is unavailable due to some programs being on quarters and other on semesters. Beginning summer 2005, all programs are on the semester system.

PharmD First Year Students are considered 1st professional students. Also, Fall 1998-2001, the Fifth Year Pharmacy students are considered graduate students.

Source:

Enrollment Reports, Office of Institutional Research, Planning & Analysis

**UNDERGRADUATE APPLICANTS BY ACADEMIC UNIT
FALL 2006 AND FALL 2007**

Academic Unit	APPLICATIONS			STUDENTS ADMITTED			STUDENTS REGISTERED		
	Fall 2006	Fall 2007	% Change 06 to 07	Fall 2006	Fall 2007	% Change 06 to 07	Fall 2006	Fall 2007	% Change 06 to 07
Arts & Media	732	767	4.8%	541	545	0.7%	358	321	-10.3%
Freshmen	381	435	14.2%	257	281	9.3%	150	150	0.0%
Transfers	321	298	-7.2%	257	233	-9.3%	191	149	-22.0%
Readmitted	30	34	13.3%	27	31	14.8%	17	22	29.4%
Business	806	879	9.1%	467	494	5.8%	273	289	5.9%
Freshmen	407	505	24.1%	189	233	23.3%	77	102	32.5%
Transfers	370	334	-9.7%	252	229	-9.1%	182	166	-8.8%
Readmitted	29	40	37.9%	26	32	23.1%	14	21	50.0%
Dental Medicine	72	86	19.4%	22	22	0.0%	18	18	0.0%
Transfers	72	86	19.4%	22	22	0.0%	18	18	0.0%
Education	18	1	na	18	1	na	12	1	na
Freshmen	n/a	n/a	n/a	n/a	n/a	n/a	n/a	n/a	n/a
Transfers	18	1	na	18	1	na	12	1	-91.7%
Readmitted	n/a	n/a	n/a	n/a	n/a	n/a	n/a	n/a	n/a
Engineering	364	421	15.7%	181	206	13.8%	93	113	21.5%
Freshmen	251	275	9.6%	126	133	5.6%	52	58	11.5%
Transfers	97	130	34.0%	43	59	37.2%	32	44	37.5%
Readmitted	16	16	0.0%	12	14	16.7%	9	11	22.2%
Liberal Arts	3,659	4,106	12.2%	2,712	2,971	9.6%	1,534	1,618	5.5%
Freshmen	1,995	2,434	22.0%	1,435	1,682	17.2%	669	782	16.9%
Transfers	1,471	1,475	0.3%	1,101	1,108	0.6%	753	726	-3.6%
Readmitted	193	197	2.1%	176	181	2.8%	112	110	-1.8%
Nursing	822	961	16.9%	200	393	96.5%	168	266	58.3%
Transfers	822	961	16.9%	200	393	96.5%	168	266	58.3%
Public Affairs	0	11	na	0	9	na	0	9	na
New	0	11	n/a	0	9	n/a	0	9	n/a
Transfers	0	8	n/a	0	5	n/a	0	3	n/a
Non-Degree	302	263	-12.9%	279	246	-11.8%	67	58	-13.4%
New	253	213	-15.8%	230	196	-14.8%	52	44	-15.4%
Readmitted	49	50	2.0%	49	50	2.0%	15	14	-6.7%
TOTAL	6,757	7,502	11.0%	4,402	4,891	11.1%	2,511	2,695	7.3%
New	6,440	7,165	11.3%	4,112	4,583	11.5%	2,344	2,517	7.4%
Former	317	337	6.3%	290	308	6.2%	167	178	6.6%

Notes:

"Students Registered" are end-of-term figures and include AU1 only.

Data are end-of-term figures and include AU1 only.

Source:

Final Fall 2006 Admissions Report

Office of Admissions and Records

**FY FTE STUDENTS BY SCHOOL/COLLEGE AND DEPARTMENT
2002-03 THROUGH 2006-07**

DOWNTOWN CAMPUS					
	<u>2002-03</u>	<u>2003-04</u>	<u>2004-05</u>	<u>2005-06</u>	<u>2006-07</u>
ARCHITECTURE AND PLANNING¹	360.9	393.7	448.7	416.5	418.9
ARTS AND MEDIA	681.0	743.0	819.8	852.8	870.7
BUSINESS	1608.6	1569.2	1470.9	1401.1	1379.6
LIBERAL ARTS AND SCIENCES	4092.5	4197.0	4451.9	4492.4	4709.0
Anthropology	162.1	168.9	156.2	149.4	152.3
Biology	330.5	374.5	395.9	400.8	455.6
Chemistry	235.4	252.3	249.4	257.3	268.4
Chinese	7.4	6.7	5.8	5.8	6.7
Chinese Studies	6.6	3.4	3.3	3.5	3.9
CLAS	3.8	3.4	3.0	1.9	0.0
Communication	338.8	334.8	333.2	351.1	341.2
CSL			8.5	6.3	7.9
Economics	249.0	259.2	263.7	254.3	274.0
English	480.1	503.1	569.6	592.1	610.1
Environmental Sciences	42.7	47.7	48.5	60.9	60.3
Ethnic Studies	21.9	24.8	39.2	40.1	53.7
French	44.9	29.4	38.2	41.1	41.2
Geography	66.6	79.9	84.8	88.6	97.5
Geology	40.3	42.5	38.5	32.5	39.5
German	28.2	24.0	28.8	22.3	27.0
Health and Behavioral Sciences	14.8	15.7	18.7	23.2	22.8
History	192.5	207.9	249.6	244.9	248.8
Humanities	8.6	12.8	15.1	13.3	14.5
Integrated Studies				0.4	0.0
Latin	14.3	5.8	7.3	8.0	7.4
Mathematics	461.8	445.1	426.9	402.4	411.8
Modern Language			0.6	0.9	0.8
Philosophy	191.7	184.7	184.3	185.1	192.6
Physics	172.3	183.0	193.8	192.0	210.7
Political Science	203.2	217.8	230.9	214.4	223.7
Psychology	340.4	367.0	420.4	441.9	472.3
Religious Studies	20.6	22.6	26.3	27.1	35.6
Russian	9.4	3.3	3.8	4.3	0.0
Social Science	6.2	11.4	12.8	13.5	8.6
Sociology	219.0	244.9	268.4	282.0	285.4
Spanish	177.4	120.4	126.4	130.8	134.7
Technical Communication	2.0	0.0	0.0	0.0	0.0
EDUCATION	902.4	959.0	927.6	890.2	841.8
ENGINEERING	572.1	533.5	503.2	468.1	474.5
MILLENNIUM COLLEGE	9.1	10.1	0.0	0.0	0.0
PUBLIC AFFAIRS	181.9	174.3	164.4	141.5	149.7
UCD - DOWNTOWN CAMPUS TOTALS	8408.5	8579.8	8786.5	8662.6	8844.1

Notes:

Architecture & Planning does not include students from the undergraduate Environmental Design program taught in Boulder.

Data are end-of-term figures and include AU1 only.

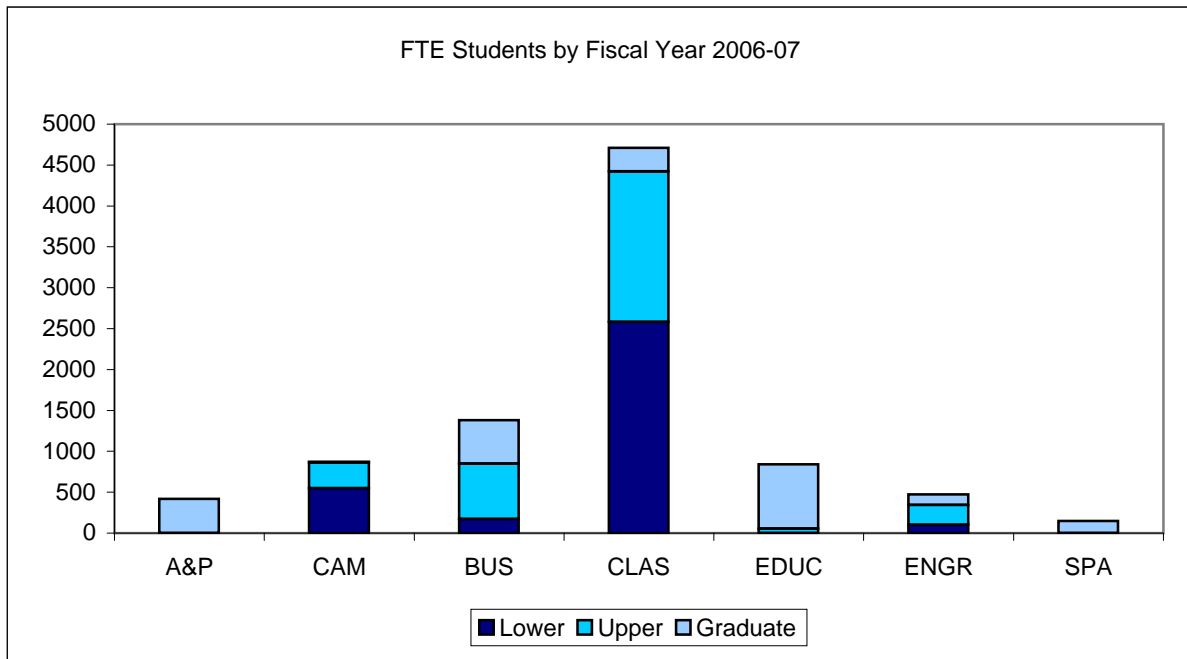
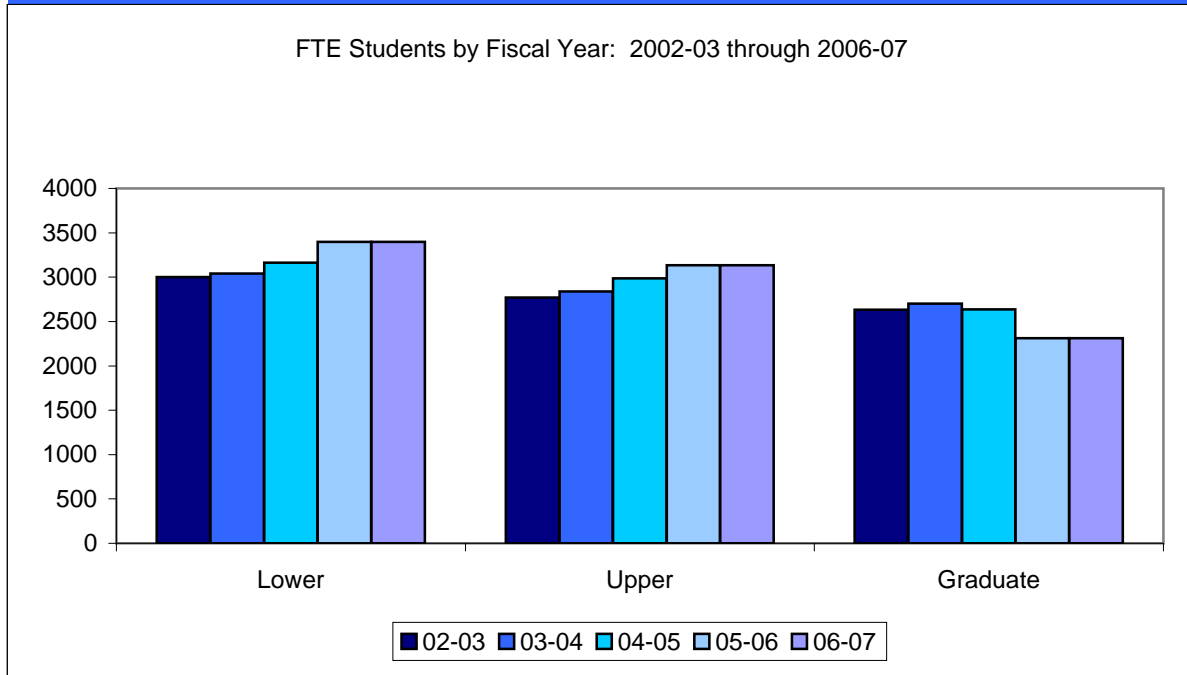
Data are not available for HSC programs

Source:

Student Credit Hour Summaries, Office of Institutional Research, Planning & Analysis

FY FTE STUDENTS BY LEVEL OF INSTRUCTION

DOWNTOWN CAMPUS



Notes:

Architecture & Planning does not include students from the undergraduate Environmental Design program taught in Boulder.

Arts, Fine Arts, Music and Theatre were transferred into Arts & Media FY 1997-98.

Data are not available for HSC programs

Source:

Student Credit Hours Summaries

Office of Institutional Research, Planning & Analysis

**FY FTE STUDENTS
BY SCHOOL/COLLEGE AND LEVEL OF INSTRUCTION**

DOWNTOWN DENVER CAMPUS							
	<u>Lower UG</u>	<u>Upper UG</u>	<u>Total UG</u>	<u>Grad I</u>	<u>Grad II</u>	<u>Total Grad</u>	<u>Total</u>
ARCHITECTURE & PLANNING							
2002-03	0.0	0.8	0.8	349.4	10.7	360.1	360.9
2003-04	0.0	1.9	1.9	381.4	10.4	391.8	393.7
2004-05	0.0	0.6	0.6	439.6	8.5	448.1	448.7
2005-06	0.0	0.5	0.5	405.7	10.3	416.0	416.5
2006-07	0.0	0.7	0.7	408.0	10.2	418.2	418.9
ARTS & MEDIA							
2002-03	428.6	242.5	671.1	9.9	0.0	9.9	681.0
2003-04	475.5	257.6	733.1	9.9	0.0	9.9	743.0
2004-05	514.3	291.8	806.1	13.7	0.0	13.7	819.8
2005-06	547.4	294.3	841.7	11.1	0.0	11.1	852.8
2006-07	545.9	314.4	860.3	10.4	0.0	10.4	870.7
BUSINESS							
2002-03	171.7	676.6	848.3	759.2	1.1	760.3	1608.6
2003-04	166.7	660.5	827.2	739.5	2.5	742.0	1569.2
2004-05	165.6	663.1	828.7	638.6	3.6	642.2	1470.9
2005-06	164.5	674.6	839.1	558.3	3.7	562.0	1401.1
2006-07	170.2	678.3	848.5	525.8	5.2	531.0	1379.6
LIBERAL ARTS & SCIENCES							
2002-03	2263.0	1550.8	3813.8	261.5	15.2	276.7	4090.5
2003-04	2278.9	1626.9	3905.8	271.1	20.1	291.2	4197.0
2004-05	2383.4	1767.5	4150.9	283.1	17.9	301.0	4451.9
2005-06	2417.8	1776.3	4194.1	280.2	18.1	298.3	4492.4
2006-07	2580.8	1839.9	4420.7	268.7	19.6	288.3	4709.0
EDUCATION							
2002-03	0.0	4.9	4.9	857.1	40.4	897.5	902.4
2003-04	0.0	8.4	8.4	907.4	43.2	950.6	959.0
2004-05	0.0	14.4	14.4	878.5	34.7	913.2	927.6
2005-06	0.0	64.0	64.0	793.3	32.9	826.2	890.2
2006-07	0.0	56.2	56.2	754.5	31.0	785.6	841.8
ENGINEERING							
2002-03	139.0	286.2	425.2	143.9	3.0	146.9	572.1
2003-04	118.3	274.4	392.7	133.8	7.0	140.8	533.5
2004-05	100.0	250.2	350.2	146.7	6.3	153.0	503.2
2005-06	93.5	232.8	326.3	133.2	8.6	141.8	468.1
2006-07	100.0	244.9	344.9	120.0	9.5	129.6	474.5
MILLENNIUM COLLEGE							
2002-03	0.0	9.1	9.1	0.0	0.0	0.0	9.1
2003-04	0.0	10.1	10.1	0.0	0.0	0.0	10.1
2004-05	0.0	0.0	0.0	0.0	0.0	0.0	0.0
2005-06	0.0	0.0	0.0	0.0	0.0	0.0	0.0
2006-07	0.0	0.0	0.0	0.0	0.0	0.0	0.0
PUBLIC AFFAIRS							
2002-03	0.0	0.0	0.0	157.0	24.9	181.9	181.9
2003-04	0.0	0.0	0.0	151.7	22.6	174.3	174.3
2004-05	0.0	0.0	0.0	144.9	19.5	164.4	164.4
2005-06	0.0	0.0	0.0	123.8	17.7	141.5	141.5
2006-07	0.0	0.0	0.0	130.6	19.1	149.7	149.7
UCD - DOWNTOWN CAMPUS TOTALS							
2002-03	3002.3	2770.9	5773.2	2538.0	95.3	2633.3	8406.5
2003-04	3039.4	2839.8	5879.2	2594.8	105.8	2700.6	8579.8
2004-05	3163.3	2987.6	6150.9	2545.1	90.5	2635.6	8786.5
2005-06	3223.2	3042.5	6265.7	2305.6	91.3	2396.9	8662.6
2006-07	3396.9	3134.4	6531.3	2218.0	94.6	2312.8	8844.1

Notes:

Architecture & Planning does not include students from the undergraduate Environmental Design program taught in Boulder.

Data are end-of-term figures and include AU1 only.

Data are not available for HSC programs

Source:

Student Credit Hour Summaries, Office of Institutional Research, Planning & Analysis

**FTE STUDENTS BY SCHOOL/COLLEGE,
DEPARTMENT AND LEVEL OF INSTRUCTION
FISCAL YEAR 2006-07**

DOWNTOWN DENVER CAMPUS							
	<u>Lower UG</u>	<u>Upper UG</u>	<u>Total UG</u>	<u>Grad I</u>	<u>Grad II</u>	<u>Total Grad</u>	<u>TOTAL</u>
ARCHITECTURE AND PLANNING¹	0.0	0.7	0.7	408.0	10.2	418.2	418.9
ARTS AND MEDIA	545.9	314.4	860.3	10.4	0.0	10.4	870.7
BUSINESS SCHOOL	170.2	678.3	848.5	525.8	5.2	531.0	1379.5
LIBERAL ARTS AND SCIENCES	2580.8	1839.9	4420.7	268.7	19.6	288.3	4709.0
Anthropology	82.1	57.2	139.3	13.0	0.0	13.0	152.3
Biology	193.5	243.6	437.1	18.5	0.0	18.5	455.6
Chemistry	145.6	114.9	260.4	8.0	0.0	8.0	268.4
Chinese	6.7	0.0	6.7	0.0	0.0	0.0	6.7
Chinese Studies	3.9	0.0	3.9	0.0	0.0	0.0	3.9
CLAS	0.0	0.0	0.0	0.0	0.0	0.0	0.0
Communication	173.3	154.5	327.8	13.4	0.0	13.4	341.2
CSL	0.0	7.9	7.9	0.0	0.0	0.0	7.9
Economics	160.3	91.2	251.5	22.5	0.0	22.5	274.0
English	352.9	221.7	574.6	35.5	0.0	35.5	610.1
Environmental Sciences	53.1	0.4	53.5	6.8	0.0	6.8	60.3
Ethnic Studies	22.7	31.0	53.7	0.0	0.0	0.0	53.7
French	31.1	10.0	41.1	0.1	0.0	0.1	41.2
Geography	53.0	39.6	92.6	4.9	0.0	4.9	97.5
Geology	29.0	10.0	39.0	0.5	0.0	0.5	39.5
German	25.1	1.9	27.0	0.0	0.0	0.0	27.0
Health and Behavioral Sciences	2.1	7.9	10.0	2.4	10.4	12.8	22.8
History	81.2	130.1	211.3	37.5	0.0	37.5	248.8
Humanities	0.0	2.9	2.9	11.6	0.0	11.6	14.5
Integrated Studies	0.0	0.0	0.0	0.0	0.0	0.0	0.0
Latin	7.4	0.0	7.4	0.0	0.0	0.0	7.4
Mathematics	311.0	70.4	381.4	21.2	9.2	30.4	411.8
Modern Language	0.0	0.1	0.1	0.7	0.0	0.7	0.8
Philosophy	129.1	60.4	189.5	3.1	0.0	3.1	192.6
Physics	191.6	19.1	210.7	0.0	0.0	0.0	210.7
Political Science	54.3	144.2	198.5	25.2	0.0	25.2	223.7
Psychology	260.3	199.1	459.4	12.9	0.0	12.9	472.3
Religious Studies	12.3	23.3	35.6	0.0	0.0	0.0	35.6
Russian	0.0	0.0	0.0	0.0	0.0	0.0	0.0
Social Science	0.0	0.0	0.0	8.6	0.0	8.6	8.6
Sociology	91.6	175.3	266.9	18.5	0.0	18.5	285.4
Spanish	107.8	23.1	130.9	3.8	0.0	3.8	134.7
EDUCATION	0.0	56.2	56.2	754.5	31.0	785.5	841.7
ENGINEERING	100.0	244.9	344.9	120.0	9.5	129.5	474.5
PUBLIC AFFAIRS	0.0	0.0	0.0	130.6	19.1	149.7	149.7
UCD - DOWNTOWN CAMPUS TOTALS	3396.8	3134.6	6531.4	2218.0	94.7	2312.8	8844.1

Notes:

Architecture & Planning does not include students from the undergraduate Environmental Design program taught in Boulder.

Data are end-of-term figures and include AU1 only.

Data are not available for HSC programs

Source:

Student Credit Hour Summaries, Office of Institutional Research, Planning & Analysis

**STUDENT/FACULTY RATIOS
BY SCHOOL/COLLEGE AND DEPARTMENT
2002-2003 THROUGH 2006-2007**

DOWNTOWN CAMPUS					
	<u>2002-2003</u>	<u>2003-2004</u>	<u>2004-2005</u>	<u>2005-2006</u>	<u>2006-2007</u>
ARCHITECTURE AND PLANNING¹	9.44	10.94	11.22	9.67	10.62
ARTS AND MEDIA	11.88	13.75	13.88	13.30	13.64
BUSINESS	20.39	20.75	19.08	19.42	16.83
LIBERAL ARTS AND SCIENCES	16.08	17.04	17.72	16.68	17.36
Anthropology	17.23	18.40	14.38	9.98	17.71
Biology	18.08	21.60	20.19	20.90	22.77
Chemistry	17.70	18.07	20.72	17.05	18.12
Communication	16.66	18.55	18.56	19.66	17.87
Economics	19.33	19.34	19.40	17.48	21.08
English	14.49	15.59	16.25	16.06	15.45
French	10.59	9.48	11.51	10.79	12.68
Geography	12.91	13.85	14.75	13.18	13.77
Geology	10.44	11.90	12.42	11.86	13.34
German	11.80	12.00	14.62	11.15	13.50
History	14.32	15.83	17.15	16.36	16.65
Mathematics	14.68	13.94	13.31	12.93	12.86
Philosophy	18.33	19.00	20.55	19.92	19.37
Physics	18.06	21.03	24.19	19.57	17.33
Political Science	15.39	17.31	19.29	16.57	18.13
Psychology	20.63	23.05	24.29	27.43	26.24
Sociology	24.72	26.48	29.96	27.95	27.23
Spanish	14.75	12.67	13.59	13.56	12.84
EDUCATION	10.88	11.63	11.12	12.02	9.94
ENGINEERING	10.66	9.74	10.04	8.90	9.04
PUBLIC AFFAIRS	9.34	8.63	8.41	6.92	8.23
TOTAL Downtown Campus	14.37	15.07	15.14	14.54	14.45

Notes:

1. Architecture & Planning does not include students from the undergraduate programs taught in Boulder.

Source:

FTES from Student Section of this report divided by FTEF from previous page.
Office of Institutional Research, Planning and Analysis

Section III.
Alumni Data

**ALUMNI BY DEGREES
CUMULATIVE 1975-76 THROUGH 2006-07**

	<u>Undergraduate</u>	<u>Graduate</u>	<u>Total</u>
DOWNTOWN CAMPUS			
ARCHITECTURE & PLANNING		3,556	3,556
Architecture		1,892	1,892
Design and Planning		20	20
Design Studies		1	1
Interior Design		48	48
Landscape Architecture		496	496
Urban and Regional Planning		918	918
Urban Design		181	181
ARTS & MEDIA	957	13	970
Fine Arts	229	0	229
Fine Arts-BFA	204	0	204
Music	390	0	390
Recording Arts	0	13	13
Theatre	32	0	32
Theatre, Film & Television-BA	26	0	26
Theatre, Film & Television-BFA	76		76
BUSINESS	8,143	11,004	19,147
Accounting	0	632	632
Business Administration	8,143	6,758	14,901
Computer Science & Info. Systems	0	0	0
Finance	0	1,119	1,119
Health Administration	0	583	583
Information Systems	0	935	935
International Business	0	142	142
Management and Organization	0	413	413
Management Science	0	45	45
Marketing	0	377	377
EDUCATION	284	9,098	9,382
Admin. Leadership and Policy Studies	0	754	754
Counseling Psych. and Counselor Educ.	0	1,749	1,749
Curriculum and Instruction	0	2,965	2,965
Early Childhood Education	0	483	483
Educational Leadership and Innovation	0	169	169
Educational Psychology	0	501	501
Elementary Education	178	307	485
Information and Learning Technologies	0	914	914
Reading	0	242	242
Rehabilitation Services	89	0	89
School Psychology	0	143	143
Secondary Education	17	279	296
Social Foundations	0	34	34
Special Education	0	558	558
ENGINEERING	4,497	1,742	6,239
Applied Mathematics	83	0	83
Civil Engineering	1,143	575	1,718
Computer Science	69	480	549
Computer Science and Engineering	655	0	655
Computer Science & Info. Systems	0	1	1
Electrical Engineering	1,615	387	2,002
Engineering	0	133	133
Mechanical Engineering	932	166	1,098

**ALUMNI BY DEGREES
CUMULATIVE 1975-76 THROUGH 2006-07**

	<u>Undergraduate</u>	<u>Graduate</u>	<u>Total</u>
LIBERAL ARTS & SCIENCES	16,051	3,738	19,789
Anthropology	414	166	580
Applied Mathematics	0	292	292
Biology	1,823	202	2,025
Chemistry	372	110	482
Communication	941	49	990
Communication and Theatre	829	137	966
Communication Disorders Speech Science	0	30	30
Distributed Studies	88	0	88
Economics	1,219	383	1,602
English	892	273	1,165
English Writing Program	598	0	598
Environmental Sciences	0	212	212
Ethnic Studies	28	0	28
Fine Arts	536	0	536
French	167	0	167
Geography	227	8	235
Geology	287	0	287
German	73	0	73
Health and Behavioral Sciences	0	41	41
History	754	225	979
Humanities	0	249	249
Individually Structured Major	678	0	678
International Studies	19	0	19
Master of Integrated Sciences	0	123	123
Mathematics	667	24	691
Music	364	0	364
Philosophy	270	0	270
Physics	98	0	98
Political Science	1,234	253	1,487
Population Dynamics	14	0	14
Psychology	2,410	411	2,821
Psychology-BS	156	0	156
Social Science	0	212	212
Sociology	651	168	819
Spanish	195	1	196
Technical Communication	0	161	161
Urban Studies	47	8	55
PUBLIC AFFAIRS		2,915	2,915
Criminal Justice		459	459
Public Administration		2,341	2,341
Public Affairs		115	115
ANSCHUTZ MEDICAL CENTER			
MEDICINE	1,240	6,896	8,136
Analytic Health Sciences	0	43	43
Anatomy	0	8	8
Anesthesiology	0	1	1
Biochemistry	0	88	88
Biomedical Basic Sciences	0	93	93
Biometrics/Biostatistics	0	92	92
Biophysics & Genetics	0	286	286
Cell & Developmental Biology	0	38	38
Clinical Science	0	14	14

**ALUMNI BY DEGREES
CUMULATIVE 1975-76 THROUGH 2006-07**

	<u>Undergraduate</u>	<u>Graduate</u>	<u>Total</u>
	(continued)		
Experimental Pathology	0	33	33
Health Administration	0	122	122
Laboratory Medicine	0	5	5
Masters in Physician Assistant Studies	33	373	406
Medical Laboratory Sciences	213	0	213
Medical Physics	0	72	72
Medical Science	289	0	289
Medical Technology	183	0	183
Medicine	0	4,035	4,035
Microbiology	0	13	13
Microbiology & Immunology	0	147	147
Neuroscience	0	30	30
Pathology	0	17	17
Pediatrics	0	8	8
Pharmacology	0	123	123
Physical Therapy	522	819	1,341
Physiology	0	25	25
Preventive Medicine	0	32	32
Public Health	0	347	347
Radiology	0	32	32
DENTISTRY	577	983	1,560
Dental Surgery	0	983	983
Dental Hygiene	577	0	577
NURSING	3,939	3,191	7,130
Nursing	3,939	3,191	7,130
PHARMACY	1,066	923	1,989
Pharmaceutical Sciences	0	38	38
Pharmacy	1,066	864	1,930
Toxicology	0	21	21
UCD Total	36,754	44,059	80,813

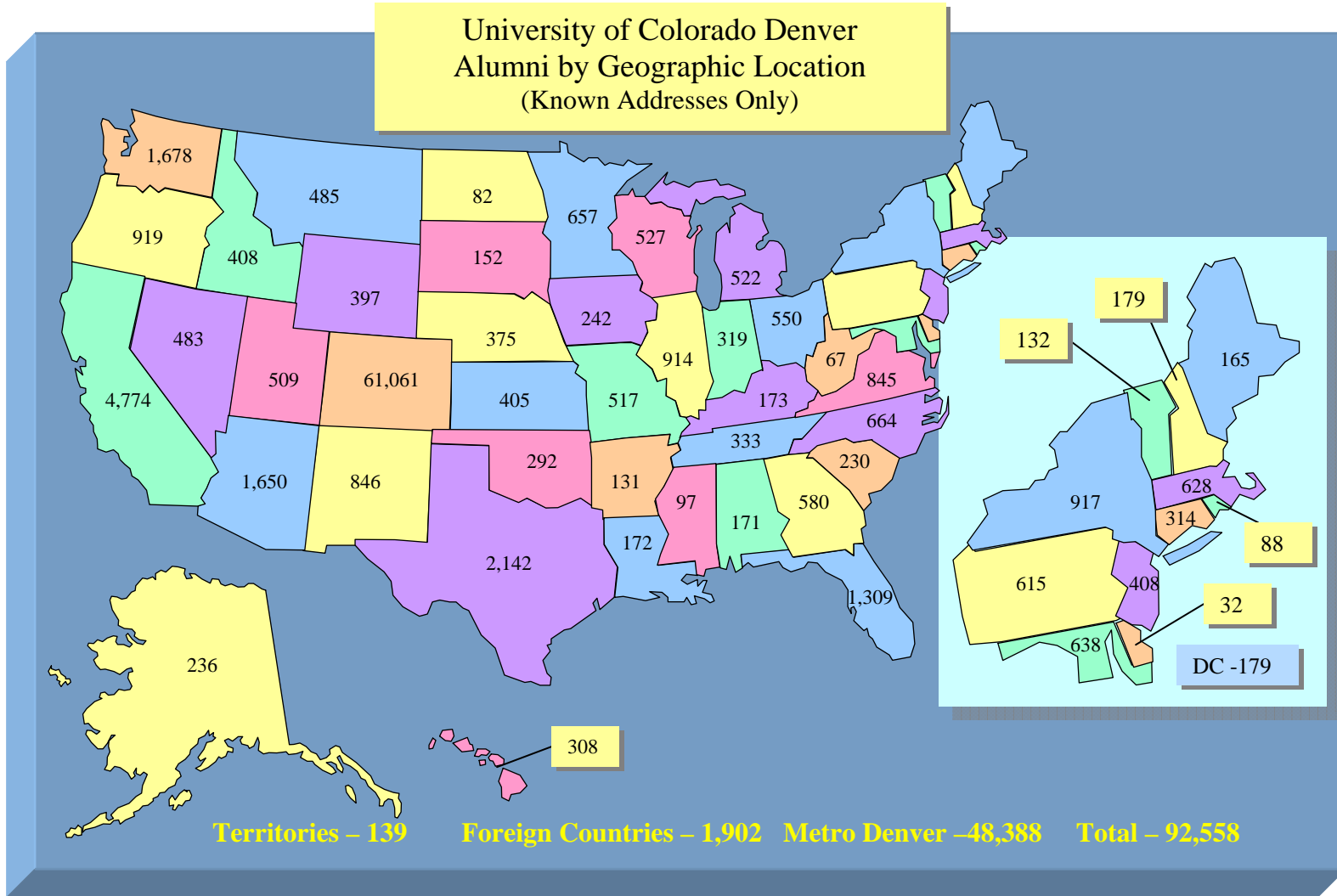
Notes:

Total alumni by degrees will not match the alumni history on the previous page because this page does not include any alumni prior to 1975.

Graduate Alumni includes master, doctoral, and first professional level alumni.

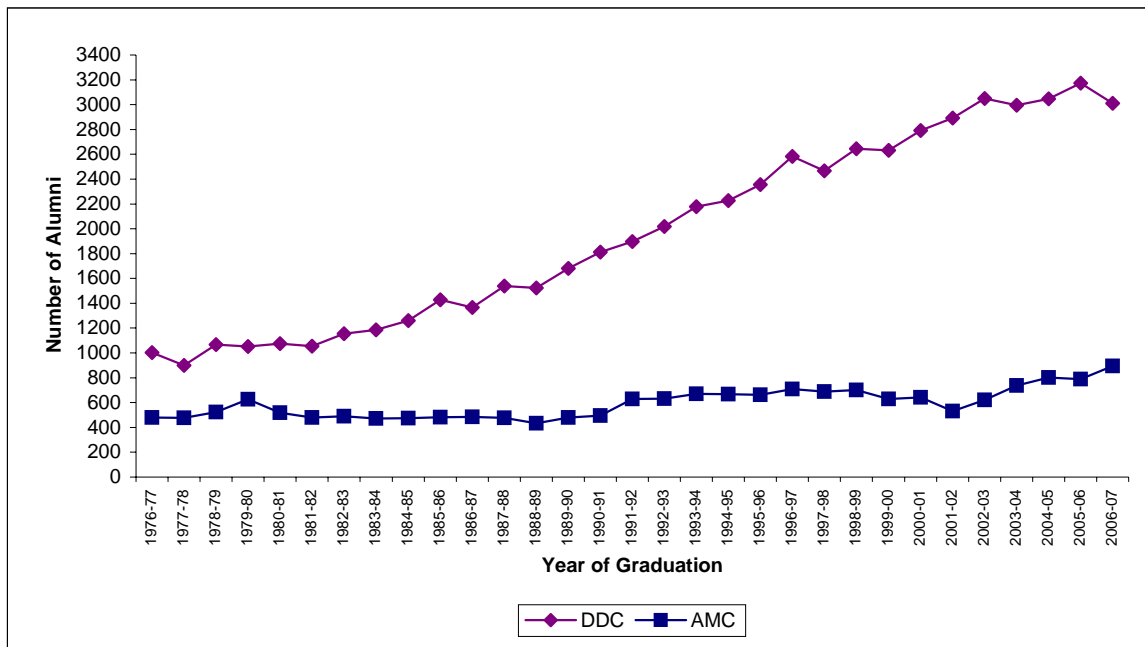
Source:

University of Colorado Denver Degrees Conferred Reports and Foundation Reports



Data Source : University of Colorado Foundation Data Services

ALUMNI BY YEAR OF GRADUATION



NUMBER OF ALUMNI

YEAR OF GRADUATION	DOWNTOWN PROGRAMS	ANSCHUTZ MEDICAL CENTER PROGRAMS	UCD TOTAL
Before 1975	5,053		5,053
1975-80	4,943	2,590	7,533
1980-81	1,074	517	1,591
1981-82	1,055	479	1,534
1982-83	1,154	489	1,643
1983-84	1,185	473	1,658
1984-85	1,261	474	1,735
1985-86	1,428	483	1,911
1986-87	1,366	484	1,850
1987-88	1,538	477	2,015
1988-89	1,524	433	1,957
1989-90	1,681	479	2,160
1990-91	1,813	495	2,308
1991-92	1,897	629	2,526
1992-93	2,018	632	2,650
1993-94	2,179	669	2,848
1994-95	2,228	667	2,895
1995-96	2,357	662	3,019
1996-97	2,584	710	3,294
1997-98	2,468	687	3,155
1998-99	2,645	700	3,345
1999-00	2,631	628	3,259
2000-01	2,792	643	3,435
2001-02	2,892	531	3,423
2002-03	3,049	620	3,669
2003-04	2,996	679	3,675
2004-05	3,046	802	3,848
2005-06	3,172	788	3,960
2006-07	3,011	895	3,906
TOTAL	67,040	18,815	85,855

University of Colorado Foundation Counts Reports for Years prior to 1975-76.

CCHE Degree Programs Offered and Certificates & Degrees Conferred for 1975-76 and later.

Note:

Data not available for Health Sciences Programs degrees awarded prior to 1975-76.

Section IV.
Degree Data

CCHE Approved Degree Programs (2006-07 Academic Year)
DEGREES OFFERED BY SCHOOL/COLLEGE AND PROGRAM

<u>School/ College</u>	<u>CIP 2000</u>	<u>CIP 1990</u>	<u>School/College/Program</u>	<u>Bachelor</u>	<u>Master</u>	<u>Doctorate</u>	<u>First Professional</u>	<u>Other</u>
DOWNTOWN CAMPUS								
COLLEGE OF ARCHITECTURE & PLANNING								
	04.0201	04.0201	Architecture		MARCH			
	04.0401	04.0401	Design and Planning			Ph.D.		
	04.0601	04.0601	Landscape Architecture		MLA			
	04.0301	04.0301	Urban and Regional Planning		MURP			
	04.0301	04.0701	Urban Design		MUD			
COLLEGE OF ARTS & MEDIA								
	50.0702	50.0701	Fine Arts	BA/BFA				
	50.0901	50.0901	Music	BS				
	50.0999	50.0999	Recording Arts		MS			
	50.0501	50.0501	Theatre, Film, & Television	BA/BFA				
COLLEGE OF BUSINESS								
	52.0301	52.0301	Accounting		MS			
	52.0201	52.0201	Business Administration	BS	MBA			
	11.0101	11.0101	Computer Science & Information Systems			Ph.D.		
	52.0801	52.0801	Finance		MS			
	51.0701	51.0701	Health Administration		MS			
	11.0401	11.0401	Information Systems		MS			
	52.1101	52.1101	International Business		MSIB			
	52.1003	52.1003	Management and Organization		MS			
	52.1401	52.1401	Marketing		MS			
COLLEGE OF LIBERAL ARTS & SCIENCES								
	45.0201	45.0201	Anthropology	BA	MA			
	27.0301	27.0301	Applied Mathematics		MS	Ph.D.		
	26.0101	26.0101	Biology	BS	MS			
	40.0501	40.0501	Chemistry	BS	MS			
	42.2301		Clinical Health Psychology			Ph.D.		
	09.0101	09.0101	Communication	BA	MA			
	45.0601	45.0601	Economics	BA	MA			
	23.0101	23.0101	English	BA	MA			
	23.0401	23.0401	English Writing Program	BA				
	03.0104	03.0102	Environmental Sciences		MS			
	16.0901	16.0901	French	BA				
	45.0701	45.0701	Geography	BA				
	30.1701	30.9999	Health and Behavioral Sciences			Ph.D.		
	54.0101	45.0801	History	BA	MA			
	24.0103	24.0103	Humanities		MH			
	30.9999	30.9999	Individually Structured Major	BA				
	30.2001		International Studies	BA				
	30.0101	30.0101	Master of Integrated Sciences		MIS			
	27.0101	27.0101	Mathematics	BS				
	38.0101	38.0101	Philosophy	BA				
	40.0801	40.0801	Physics	BS				
	45.1001	45.1001	Political Science	BA	MA			
	42.0101	42.0101	Psychology	BA	MA			
	42.1101	42.1101	Psychology	BS				
	45.0101	45.0101	Social Science		MSS			
	45.1101	45.1101	Sociology	BA	MA			
	16.0905	16.0905	Spanish	BA	MA			
	23.1101	23.1101	Technical Communication		MS			
SCHOOL OF EDUCATION								
	13.0401	13.0401	Administrative Leadership and Policy Studies		MA			ED.S
	13.1101	13.1101	Counseling Psychology and Counselor Educ.		MA			
	13.0301	13.0301	Curriculum and Instruction		MA			
	13.1210	13.1204	Early Childhood Education		MA			
	13.0401	13.0401	Educational Leadership and Innovation			Ph.D.		
	42.1801	13.0802	Educational Psychology		MA			
	25.0101	25.0101	Information and Learning Technologies		MA			
	42.1701	42.1701	School Psychology					ED.S
	13.1001	13.1001	Special Education		MA			
COLLEGE OF ENGINEERING & APPLIED SCIENCE								
	14.0801	14.0801	Civil Engineering	BS	MS	Ph.D.		
	11.0101	11.0101	Computer Science		MS			
	11.0101	11.0101	Computer Science & Information Systems			Ph.D.		
	11.0101	11.0701	Computer Science and Engineering	BS				
	14.1001	14.1001	Electrical Engineering	BS	MS			
	14.0101	14.0101	Engineering		MEng			
	14.1901	14.1901	Mechanical Engineering	BS	MS			
SCHOOL OF PUBLIC AFFAIRS								

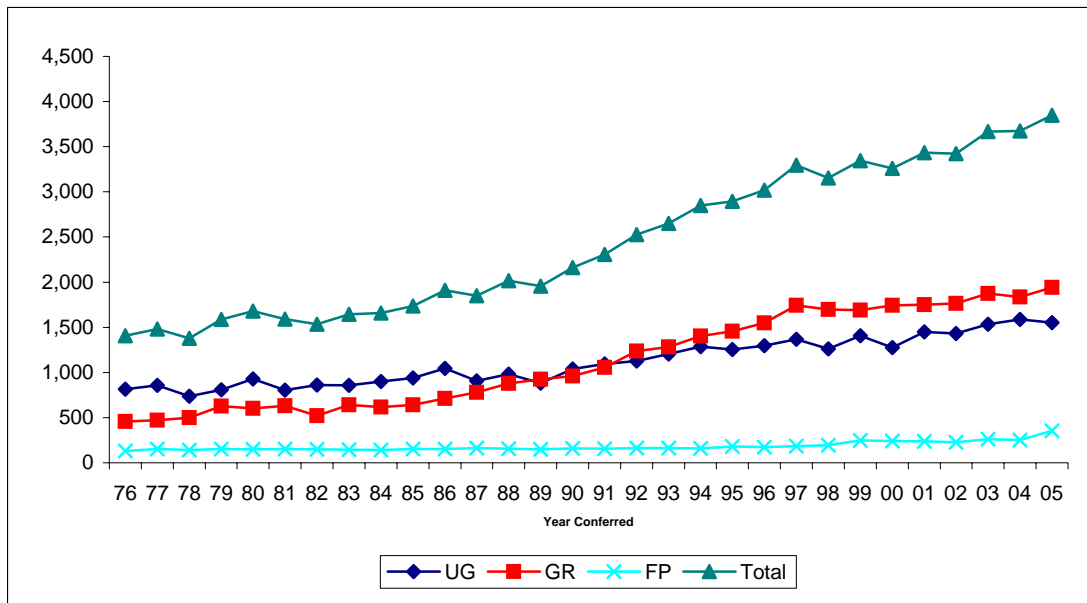
CCHE Approved Degree Programs (2006-07 Academic Year)
DEGREES OFFERED BY SCHOOL/COLLEGE AND PROGRAM

<u>School/ College</u>	<u>CIP 2000</u>	<u>CIP 1990</u>	<u>School/College/Program</u>	<u>Bachelor</u>	<u>Master</u>	<u>Doctorate</u>	<u>First Professional</u>	<u>Other</u>
	43.0103	43.0103	Criminal Justice	BA	MCJ			
	44.0401	44.0401	Public Administration		MPA			
	44.0401	44.0401	Public Affairs			Ph.D.		
ANSCHUTZ MEDICAL CAMPUS								
SCHOOL OF MEDICINE								
	26.1101		Analytic Health Sciences			Ph.D.		
	26.0202		Biochemistry			Ph.D.		
	26.0102		Master of Science/Option Name		MS			
	26.1101		Biostatistics		MS			
	26.0203		Biophysics & Genetics		MS	Ph.D.		
	26.0406		Cell & Developmental Biology			Ph.D.		
	51.1401		Clinical Science		MSCS	Ph.D.		
	26.0910		Experimental Pathology			Ph.D.		
	51.0912		Masters in Physician Assistant Studies		MPAS			
	26.0203		Medical Physics		MS			
	26.0102		Medical Science	BS				
	51.1201		Medicine					MD
	26.0599		Microbiology & Immunology			Ph.D.		
	30.2401		Neuroscience			Ph.D.		
	26.1001		Pharmacology			Ph.D.		
	51.2308		Physical Therapy		MS			DPT
	26.0901		Physiology			Ph.D.		
	51.2201		Public Health		MSPH			
SCHOOL OF DENTISTRY								
	51.0401		Dental Surgery					DDS
	51.0602		Dental Hygiene	BS				
SCHOOL OF NURSING								
	51.1601		Nursing	BS				DNP
	51.1602		Nursing		MS	Ph.D.		
SCHOOL OF PHARMACY								
	51.2004		Pharmaceutical Sciences			Ph.D.		
	51.2001		Pharmacy					PharmD
	26.1004		Toxicology			Ph.D.		

Notes: The degree program name for the Master of Basic Science was changed to Master of Integrated Sciences in 2002.
The Master of Arts in Biology was changed to a Master of Science effective May 2004

Source: CCHE Approved Postsecondary Degree and Certificate Programs

DEGREES CONFERRED 1975-76 THROUGH 2006-07



Year	Bacc.	Master	Doctorate	Ed.S.	1st Professional	Total
1975-76	816	453	5		132	1,406
1976-77	857	463	9		153	1,482
1977-78	737	495	4		141	1,377
1978-79	808	621	7		153	1,589
1979-80	927	590	14		148	1,679
1980-81	806	620	11		154	1,591
1981-82	862	509	13		150	1,534
1982-83	856	616	27		144	1,643
1983-84	901	597	18		142	1,658
1984-85	940	617	25		153	1,735
1985-86	1,047	689	24		151	1,911
1986-87	907	760	19		164	1,850
1987-88	981	858	20		156	2,015
1988-89	883	882	43		149	1,957
1989-90	1,039	924	37	1	159	2,160
1990-91	1,096	1,012	38	5	157	2,308
1991-92	1,128	1,185	47	3	163	2,526
1992-93	1,204	1,218	59	7	162	2,650
1993-94	1,285	1,352	50	1	160	2,848
1994-95	1,256	1,408	49	1	181	2,895
1995-96	1,296	1,472	72	6	173	3,019
1996-97	1,366	1,667	75	3	183	3,294
1997-98	1,262	1,635	60	2	196	3,155
1998-99	1,408	1,607	77	6	247	3,345
1999-00	1,276	1,666	69	7	241	3,259
2000-01	1,448	1,650	69	32	236	3,435
2001-02	1,432	1,665	80	19	227	3,423
2002-03	1,534	1,784	73	16	262	3,669
2003-04	1,588	1,739	76	20	252	3,675
2004-05	1,551	1,834	75	34	354	3,848
2005-06	1,605	1,894	81	25	355	3,960
2006-07	1,652	1,696	42	95	421	3,906
Total	36,754	36,178	1,368	283	6,219	80,802

Source: CCHE Degrees Awarded Reports

DEGREES CONFERRED BY GENDER
2006-07

	Undergraduate			Masters & EdS			Doctorate			First Professional			Total		
	Male	Female	Total	Male	Female	Total	Male	Female	Total	Male	Female	Total	Male	Female	Total
Downtown Campus															
ARCHITECTURE & PLANNING				90	70	160	2	2	4				92	72	164
Architecture				51	35	86							51	35	86
Design and Planning							2	2	4				2	2	4
Landscape Architecture				11	12	23							11	12	23
Urban and Regional Planning				23	17	40							23	17	40
Urban Design				5	6	11							5	6	11
ARTS & MEDIA	106	73	179	3	0	3	0	0	0				109	73	182
Fine Arts	1	14	15										1	14	15
Fine Arts-BFA	20	19	39										20	19	39
Music	69	22	91										69	22	91
Recording Arts				3	0	3							3	0	3
Theatre, Film, & Television-BA	1	7	8										1	7	8
Theatre, Film, & Television-BFA	15	11	26										15	11	26
BUSINESS	176	170	346	283	215	498	0	0	0				459	385	844
Accounting				18	31	49							18	31	49
Business Administration	176	170	346	198	141	339							374	311	685
Computer Science & Info. Systems													0	0	0
Finance				32	13	45							32	13	45
Health Administration				1	2	3							1	2	3
Information Systems				21	4	25							21	4	25
International Business				8	8	16							8	8	16
Management and Organization				2	7	9							2	7	9
Marketing				3	9	12							3	9	12
LIBERAL ARTS & SCIENCES	247	525	772	74	108	182	1	4	5				322	637	959
Anthropology	4	14	18	2	7	9							6	21	27
Applied Mathematics				5	8	13	0	2	2				5	10	15
Biology	36	81	117	3	5	8							39	86	125
Chemistry	5	6	11	3	1	4							8	7	15
Communication	32	80	112	0	2	2							32	82	114
Economics	20	12	32	11	4	15							31	16	47
English	10	26	36	5	18	23							15	44	59
English Writing Program	11	18	29										11	18	29
Environmental Sciences				3	3	6							3	3	6
French	1	4	5										1	4	5
Geography	5	7	12										5	7	12
Geology*	0	2	2										0	2	2
German*	0	0	0										0	0	0
Health and Behavioral Sciences							1	2	3				1	2	3
History	17	29	46	8	12	20							25	41	66
Humanities				4	7	11							4	7	11
Individually Structured Major	4	20	24										4	20	24
International Studies	7	3	10										7	3	10
Master of Integrated Sciences				2	1	3							2	1	3
Mathematics	8	7	15										8	7	15
Philosophy	13	6	19										13	6	19
Physics	1	2	3										1	2	3
Political Science	33	52	85	13	11	24							46	63	109
Psychology	19	86	105	3	2	5							22	88	110
Psychology-BS	6	18	24										6	18	24
Social Science				4	10	14							4	10	14
Sociology	11	48	59	5	13	18							16	61	77
Spanish	4	4	8	0	1	1							4	5	9
Technical Communication				3	3	6							3	3	6

DEGREES CONFERRED BY GENDER
2006-07

	Undergraduate			Masters & EdS			Doctorate			First Professional			Total		
	Male	Female	Total	Male	Female	Total	Male	Female	Total	Male	Female	Total	Male	Female	Total
EDUCATION				69	431	500	3	10	13				72	441	513
Admin. Leadership and Policy Studies				12	41	53							12	41	53
Counseling Psych. and Counselor Educ.				7	52	59							7	52	59
Curriculum and Instruction				25	155	180							25	155	180
Early Childhood Education				0	26	26							0	26	26
Educational Leadership and Innovation							3	10	13				3	10	13
Educational Psychology				8	49	57							8	49	57
Information and Learning Technologies				16	54	70							16	54	70
School Psychology				1	20	21							1	20	21
Special Education				0	34	34							0	34	34
ENGINEERING	91	14	105	77	31	108	3	0	3				171	45	216
Civil Engineering	22	6	28	16	8	24	2	0	2				40	14	54
Computer Science				29	17	46							29	17	46
Computer Science & Info. Systems	12	2	14										12	2	14
Computer Science and Engineering							1	0	1				1	0	1
Electrical Engineering	28	4	32	16	1	17							44	5	49
Engineering				6	4	10							6	4	10
Mechanical Engineering	29	2	31	10	1	11							39	3	42
PUBLIC AFFAIRS				62	62	124	3	6	9				65	68	133
Criminal Justice				10	10	20							10	10	20
Public Administration				52	52	104							52	52	104
Public Affairs							3	6	9				3	6	9
DC Subtotal	620	782	1,402	658	917	1,575	12	22	34				1,290	1,721	3,011
ANSCHUTZ MEDICAL CAMPUS															
MEDICINE	2	2	4	8	62	70	24	25	49	73	110	183	107	199	306
Analytic Health Sciences							2	3	5				2	3	5
Biochemistry							4	3	7				4	3	7
Biomedical Basic Sciences				3	6	9							3	6	9
Biostatistics				0	3	3							0	3	3
Biophysics & Genetics				1	5	6	6	11	17				7	16	23
Cell & Developmental Biology							1	1	2				1	1	2
Clinical Science							0	1	1				0	1	1
Experimental Pathology							1	1	2				1	1	2
Masters in Physician Assistant Studies				2	27	29							2	27	29
Medical Science	2	2	4										2	2	4
Medicine										69	68	137	69	68	137
Microbiology & Immunology							4	4	8				4	4	8
Neuroscience							2	1	3				2	1	3
Pharmacology							3	0	3				3	0	3
Physical Therapy										4	42	46	4	42	46
Physiology							1	0	1				1	0	1
Public Health				2	21	23							2	21	23
DENTISTRY	0	20	20							34	25	59	34	45	79
Dental Surgery										34	25	59	34	25	59
Dental Hygiene	0	20	20										0	20	20
NURSING	16	210	226	1	92	93	0	7	7	1	21	22	18	330	348
Nursing	16	210	226							1	21	22	17	231	248
Nursing				1	92	93	0	7	7				1	99	100
PHARMACY				0	0	0	1	4	5	49	108	157	50	112	162
Pharmaceutical Sciences							0	3	3				0	3	3
Pharmacy										49	108	157	49	108	157
Toxicology							1	1	2				1	1	2
HSC Subtotal	18	232	250	9	154	163	25	36	61	157	264	421	209	686	895
UCD Total	638	1,014	1,652	667	1,071	1,738	37	58	95	157	264	421	1,499	2,407	3,906

Note: The degree program name for the Master of Basic Science was changed to Master of Integrated Sciences in 2002.

Source: C CHE Degrees Awarded Reports

DEGREES CONFERRED BY ETHNICITY 2006-07

	Undergraduate				Masters & EdS				Doctorate				First Professional				Total			
	Minority	White ¹	NonRes. Alien	Total	Minority	White ¹	NonRes. Alien	Total	Minority	White ¹	NonRes. Alien	Total	Minority	White ¹	NonRes. Alien	Total	Minority	White ¹	NonRes. Alien	Total
DOWNTOWN CAMPUS																				
ARCHITECTURE & PLANNING					14	140	6	160	0	2	2	4					14	142	8	164
Architecture					11	73	2	86									11	73	2	86
Design and Planning									0	2	2	4					0	2	2	4
Landscape Architecture					1	21	1	23									1	21	1	23
Urban and Regional Planning					1	39	0	40									1	39	0	40
Urban Design					1	7	3	11									1	7	3	11
ARTS & MEDIA	30	148	1	179	0	2	1	3	0	0	0	0					30	150	2	182
Fine Arts	2	13	0	15													2	13	0	15
Fine Arts-BFA	7	31	1	39													7	31	1	39
Music	15	76	0	91													15	76	0	91
Recording Arts					0	2	1	3									0	2	1	3
Theatre, Film, & Television-BA	3	5	0	8													3	5	0	8
Theatre, Film, & Television-BFA	3	23	0	26													3	23	0	26
BUSINESS	97	237	12	346	58	389	51	498	0	0	0	0					155	626	63	844
Accounting					7	35	7	49									7	35	7	49
Business Administration	97	237	12	346	39	280	20	339									136	517	32	685
Computer Science & Info. Systems									0	0	0	0					0	0	0	0
Finance					5	25	15	45									5	25	15	45
Health Administration					0	3	0	3									0	3	0	3
Information Systems					3	19	3	25									3	19	3	25
International Business					2	11	3	16									2	11	3	16
Management and Organization					1	7	1	9									1	7	1	9
Marketing					1	9	2	12									1	9	2	12
LIBERAL ARTS & SCIENCES	175	587	10	772	25	147	10	182	0	5	0	5					200	739	20	959
Anthropology	2	16	0	18	0	9	0	9									2	25	0	27
Applied Mathematics					4	8	1	13	0	2	0	2					4	10	1	15
Biology	34	83	0	117	1	7	0	8									35	90	0	125
Chemistry	3	7	1	11	2	2	0	4									5	9	1	15
Communication	31	81	0	112	1	1	0	2									32	82	0	114
Economics	7	20	5	32	2	11	2	15									9	31	7	47
English	3	33	0	36	0	23	0	23									3	56	0	59
English Writing Program	4	25	0	29													4	25	0	29
Environmental Sciences					0	3	3	6									0	3	3	6
French	1	4	0	5													1	4	0	5
Geography	2	10	0	12													2	10	0	12
Geology*	0	2	0	2													0	2	0	2
German*																	0	0	0	0
Health and Behavioral Sciences									0	3	0	3					0	3	0	3
History	11	35	0	46	1	19	0	20									12	54	0	66
Humanities					1	10	0	11									1	10	0	11
Individually Structured Major	6	18	0	24													6	18	0	24
International Studies	3	7	0	10													3	7	0	10
Master of Integrated Sciences					1	1	1	3									1	1	1	3
Mathematics	2	13	0	15													2	13	0	15
Philosophy	2	17	0	19													2	17	0	19
Physics	0	3	0	3													0	3	0	3
Political Science	26	56	3	85	3	20	1	24									29	76	4	109
Psychology	20	85	0	105	0	5	0	5									20	90	0	110
Psychology-BS	3	21	0	24													3	21	0	24
Social Science					2	12	0	14									2	12	0	14
Sociology	12	46	1	59	4	12	2	18									16	58	3	77
Spanish	3	5	0	8	1	0	0	1									4	5	0	9
Technical Communication					2	4	0	6									2	4	0	6

DEGREES CONFERRED BY ETHNICITY 2006-07

	Undergraduate				Masters & EdS				Doctorate				First Professional				Total			
	Minority	White ¹	NonRes. Alien	Total	Minority	White ¹	NonRes. Alien	Total	Minority	White ¹	NonRes. Alien	Total	Minority	White ¹	NonRes. Alien	Total	Minority	White ¹	NonRes. Alien	Total
EDUCATION					40	457	3	500	2	11	0	13					42	468	3	513
Admin. Leadership and Policy Studies					3	49	1	53									3	49	1	53
Counseling Psych. and Counselor Educ.					3	56	0	59									3	56	0	59
Curriculum and Instruction					15	164	1	180									15	164	1	180
Early Childhood Education					3	22	1	26									3	22	1	26
Educational Leadership and Innovation								0	2	11	0	13					2	11	0	13
Educational Psychology					3	54	0	57									3	54	0	57
Information and Learning Technologies					7	63	0	70									7	63	0	70
School Psychology								0									0	0	0	0
Special Education					6	49		55									6	49	0	55
ENGINEERING	28	71	6	105	23	57	28	108	0	1	2	3					51	129	36	216
Civil Engineering	8	20	0	28	4	17	3	24	0	1	1	2					12	38	4	54
Computer Science					14	16	16	46									14	16	16	46
Computer Science & Info. Systems	3	10	1	14													3	10	1	14
Computer Science and Engineering									0	0	1	1					0	0	1	1
Electrical Engineering	10	18	4	32	3	7	7	17									13	25	11	49
Engineering					0	8	2	10									0	8	2	10
Mechanical Engineering	7	23	1	31	2	9	0	11									9	32	1	42
PUBLIC AFFAIRS					20	93	11	124	0	9	0	9					20	102	11	133
Criminal Justice					2	18	0	20									2	18	0	20
Public Administration					18	75	11	104									18	75	11	104
Public Affairs									0	9	0	9					0	9	0	9
DC Subtotal	330	1,043	29	1,402	180	1,285	110	1,575	2	28	4	34					512	2,356	143	3,011
ANSCHUTZ MEDICAL CAMPUS																				
MEDICINE	0	4	0	4	9	59	2	70	8	32	9	49	28	154	1	183	45	249	12	306
Analytic Health Sciences									0	4	1	5					0	4	1	5
Biochemistry									2	3	2	7					2	3	2	7
Biomedical Basic Sciences					1	7	1	9									1	7	1	9
Biostatistics					2	0	1	3									2	0	1	3
Biophysics & Genetics					0	6	0	6	1	12	4	17					1	18	4	23
Cell & Developmental Biology									1	1	0	2					1	1	0	2
Clinical Science									0	1	0	1					0	1	0	1
Experimental Pathology									0	2	0	2					0	2	0	2
Masters in Physician Assistant Studies					4	25	0	29									4	25	0	29
Medical Science	0	4	0	4													0	4	0	4
Medicine													26	111	0	137	26	111	0	137
Microbiology & Immunology									2	5	1	8					2	5	1	8
Neuroscience									1	2	0	3					1	2	0	3
Pharmacology									1	2	0	3					1	2	0	3
Physical Therapy													2	43	1	46	2	43	1	46
Physiology									0	0	1	1					0	0	1	1
Public Health					2	21	0	23									2	21	0	23
DENTISTRY	3	17	0	20	0	0	0	0	0	0	0	0	8	51	0	59	11	68	0	79
Dental Surgery													8	51	0	59	8	51	0	59
Dental Hygiene	3	17	0	20													3	17	0	20
NURSING	31	191	4	226	6	85	2	93	0	7	0	7	5	17	0	22	42	300	6	348
Nursing	31	191	4	226					5	17	0	22					36	208	4	248
Nursing					6	85	2	93	0	7	0	7					6	92	2	100
PHARMACY									1	2	2	5	49	106	2	157	50	108	4	162
Pharmaceutical Sciences									1	2	0	3					1	2	0	3
Pharmacy													49	106	2	157	49	106	2	157
Toxicology									0	0	2	2					0	0	2	2
AMC Subtotal	34	212	4	250	15	144	4	163	9	41	11	61	90	328	3	421	148	725	22	895
UCD Total	364	1,255	33	1,652	195	1,429	114	1,738	11	69	15	95	90	328	3	421	660	3,081	165	3,906

Notes:

1. Students with unknown ethnicity are included under "White" count.
2. The degree program name for the Master of Basic Science was changed to Master of Integrated Sciences in 2002.

Source: CCHE Degrees Awarded Reports

*Degree program has been discontinued but is still graduating students.

**DEGREES CONFERRED BY SCHOOL/COLLEGE
2002-03 THROUGH 2006-07**

CIP Code 2000	2002-03					2003-04					2004-05					2005-06					2006-07					
	B	M	Ed S	D	1st Prof	B	M	Ed S	D	1st Prof	B	M	Ed S	D	1st Prof	B	M	Ed S	D	1st Prof	B	M	Ed S	D	1st Prof	
DOWNTOWN CAMPUS																										
	ARCHITECTURE & PLANNING																									
4.0201	0	142	0	4	0	0	110	0	3	0	0	183	0	2	0	0	175	0	5	0	0	160	0	4	0	0
4.0401		68					63					95					98					86				
4.0601				4					3					2					5					4		
4.0301							23					34					23					23				
4.0301							20					43					42					40				
4.0301							4					11					12					11				
	ARTS & MEDIA																									
50.0702	107	0	0	0	0	111	5	0	0	0	155	0	0	0	0	134	5	0	0	0	179	3	0	0	0	0
50.0702							12					23					14					15				
50.0901							43					44					30					39				
50.0999							46					59					61					91				
50.0501							5										5					3				
50.0501							7					6					5					8				
50.0501							3					23					24					26				
	BUSINESS																									
52.0301	362	584	0	0	0	334	637	0	0	0	358	558	0	0	0	336	563	0	0	0	346	498	0	0	0	0
52.0201							34					37					41					49				
11.0101							334		402			358		364			336		384			346		339		
52.0801									77					67					59					45		
51.0701									6					10					3					3		
11.0401									71					41					20					25		
52.1101									13					11					14					16		
52.1003									11					9					13					9		
52.1401									23					19					29					12		
	LIBERAL ARTS & SCIENCES																									
45.0201	762	158	0	7	0	808	166	0	10	0	717	175	0	8	0	754	181	0	11	0	772	182	0	5	0	
27.0301				4			16		11			21		6			9		6			18		9		
26.0101							91		4			72		9			104		14			117		8		
40.0501							10		6			13		3			9		3			11		4		
9.0101							157		7			121		9			110		3			112		2		
45.0601							129		22			96		17			33		22			32		15		
23.0101							28		11			30		17			43		22			36		23		
23.0401							25					41					36					29				
3.0401									9					22					15					6		
16.0901							12					6					10					5				
45.0701							11					13					24					12				
40.0601							8					3					4					2				
16.0501							7					5					1									
30.1701				3						7					5					8					3	
54.0101							29		13			29		10			41		9			46		20		
24.0103									15					15					10					11		
30.9999							19					37					18					24				
30.2001																	9					10				
30.0101									3					6					9					3		
27.0101							13					20					20					15				
38.0101							18					12					18					19				
40.0801							2					1					4					3				
45.1001							54		16			58		20			70		28			85		24		
42.0101							113		15			79		19			118		6			105		5		
42.1101							23					18					23					24				
45.0101									7					4					9					14		
45.1101							34		8			35		5			41		8			59		18		
16.0905							9					7					9					8		1		
23.1101									8					7					6					6		
	EDUCATION																									
13.0401	0	497	16	13	0	0	384	20	18	0	0	494	34	5	0	0	562	25	9	0	0	458	42	13	0	0
13.1101				4			22		3			37		12			33		9			32		21		
13.0301							45					54					60					59				
13.1210							220		165			201					239					180				
13.0401							26		24			34					43					26				
13.0401										13					18					9					13	
42.1801							26		39			73					84					57				
25.0101							70		59			64					72					70				
42.1701									17					22					16				21			
13.1001							30					31					31					34				
	ENGINEERING																									
14.0801	153	111	0	3	0	134	105	0	0	0	122	95	0	2	0	132	126	0	0	0	105	108	0	3	0	0
11.0101							25		23			22		18			33		29			28		24		2
11.0101							52		42			43					56					46				
11.0101							69					33					29					14				
11.0101																										1
14.1001							29		16			41		16			44		11			32		17		
14.0101									13					15					21					10		
14.1901							20		6			26		3			26		9			31		11		
	PUBLIC AFFAIRS																									
43.0103	0	125	0	5	0	0</																				

**DEGREES CONFERRED BY SCHOOL/COLLEGE
2002-03 THROUGH 2006-07**

CIP Code 2000	2002-03					2003-04					2004-05					2005-06					2006-07					
	B	M	Ed S	D	1st Prof	B	M	Ed S	D	1st Prof	B	M	Ed S	D	1st Prof	B	M	Ed S	D	1st Prof	B	M	Ed S	D	1st Prof	
ANSCHUTZ MEDICAL CAMPUS																										
	5	96	0	29	132	6	101	0	34	113	7	113	0	41	143	0	64	0	34	157	4	70	0	49	183	
26.1101					6				2					2					7						5	
26.0202					2									2					2						7	
26.0102		2					8					7					7					9				
26.1101			2				2					2					6					3				
26.0203			7		3		6		5			8		8			8		5			6			17	
26.0406					2				2					3					3						2	
51.1401					1									5					4						1	
26.0910					3														1						2	
51.0912		19					22					18					22					29				
26.0203					2																					
26.0102	5						6					7									4					
51.1201					132					113					126					125					137	
26.0599					4					11				10					7						8	
30.2401					3					3				3					4						3	
26.1001					5					6				7					1						3	
51.2308		42					42					51		17			2								46	
26.0901														1											1	
51.2201		22					21					27					19					23				
	19	0	0	0	35	21	0	0	0	40	22	0	0	0	37	24	0	0	0	46	20	0	0	0	59	
51.0401					35					40				37					46						59	
51.0602	19					21					22					24					20					
	126	71	0	6	15	174	82	0	5	17	170	82	0	10	23	225	69	0	6	9	226	93	0	7	22	
51.1601	126				15	174	82	0	5	17	170	82	0	10	23	225	69	0	6	9	226	93	0	7	22	
51.1602		71			6		82		5			82		10			69		6			93			7	
	0	0	0	6	80	0	0	0	4	82	0	0	0	3	151	0	0	0	11	143	0	0	0	5	157	
51.2004					5					82				3					7						3	
51.2001					80					82					151					143					157	
26.1004					1					4									4						2	
AMC Subtotal	150	167	0	41	262	201	183	0	43	252	199	195	0	54	354	249	133	0	51	355	250	163	0	61	421	
UCD Total	1,534	1,784	16	73	262	1,588	1,739	20	76	252	1,551	1,834	34	75	354	1,605	1,894	25	81	355	1,652	1,696	42	95	421	

Notes:

1. The degree program name for the Master of Basic Science was changed to Master of Integrated Sciences in 2002.
2. The degree program name for the doctorate in Public Administration was changed to Public Affairs in 1999.

Source: CCHE Degrees Awarded Reports

*Degree program has been discontinued but is still graduating students.

Section V. Faculty Data

**FULL-TIME INSTRUCTIONAL FACULTY
2007-2008**

DISTRIBUTION BY GENDER

School/College	Male		Female		Total
	N	%	N	%	N
DOWNTOWN CAMPUS					
Architecture and Planning-Combined ¹	35	69%	16	31%	51
Architecture and Planning-Denver	29	73%	11	28%	40
Architecture and Planning-Boulder	6	55%	5	45%	11
Arts and Media	36	64%	20	36%	56
Business	42	65%	23	35%	65
Liberal Arts and Sciences	125	60%	85	40%	210
Education	19	31%	42	69%	61
Engineering	34	89%	4	11%	38
Public Affairs	9	6%	6	40%	15
DC SUBTOTAL	300	60%	196	40%	496
Auraria Library	5	24%	16	76%	21
DC TOTAL	305	59%	212	41%	517
ANSCHUTZ MEDICAL CENTER					
Dentistry	41	72%	16	28%	57
Medicine	814	52%	747	48%	1561
Nursing	2	3%	63	97%	65
Pharmacy	33	60%	22	40%	55
AMC SUBTOTAL	890	51%	848	49%	1738
Dennison Library	6	35%	11	65%	17
AMC TOTAL	896	51%	859	49%	1755
UCD SUBTOTAL	1190	53%	1044	47%	2234
UCD TOTAL	1201	53%	1071	47%	2272

DISTRIBUTION BY HIGHEST DEGREE AWARDED

School/College	Other or Unknown		Bachelor		Master		Doctorate		Total	
	N	%	N	%	N	%	N	%	N	
DOWNTOWN CAMPUS										
Architecture and Planning-Combined ¹	0	0.00%	1	1.96%	31	60.78%	19	37.25%	51	
Architecture and Planning-Denver	0	0.00%	1	2.50%	26	65.00%	13	32.50%	40	
Architecture and Planning-Boulder	0	0.00%	0	0.00%	5	45.45%	6	54.55%	11	
Arts and Media	2	3.57%	2	3.57%	42	75.00%	10	17.86%	56	
Business	0	0.00%	0	0.00%	13	20.00%	52	80.00%	65	
Liberal Arts and Sciences	5	2.38%	9	4.29%	37	17.62%	159	75.71%	210	
Education	2	3.28%	8	13.11%	6	9.84%	45	73.77%	61	
Engineering	0	0.00%	0	0.00%	5	13.16%	33	86.84%	38	
Public Affairs	0	0.00%	0	0.00%	0	0.00%	15	100.00%	15	
DC SUBTOTAL	9	1.81%	20	4.03%	134	27.02%	333	67.14%	496	
Auraria Library	0	0.00%	0	0.00%	20	95.24%	1	4.76%	21	
DC TOTAL	9	1.74%	20	3.87%	154	29.79%	334	64.60%	517	
ANSCHUTZ MEDICAL CENTER										
Dentistry	1	1.75%	2	3.51%	4	7.02%	50	87.72%	57	
Medicine	2	0.13%	58	3.72%	225	14.41%	1276	81.74%	1561	
Nursing	0	0.00%	1	1.54%	23	35.38%	41	63.08%	65	
Pharmacy	0	0.00%	4	7.27%	2	3.64%	49	89.09%	55	
AMC SUBTOTAL	3	0.17%	65	3.74%	254	14.61%	1416	81.47%	1738	
Dennison Library	0	0.00%	0	0.00%	16	94.12%	1	5.88%	17	
AMC TOTAL	3	0.17%	65	3.70%	270	15.38%	1417	80.74%	1755	
UCD SUBTOTAL	12	0.54%	85	3.80%	388	17.37%	1749	78.29%	2234	
UCD TOTAL	12	0.53%	85	3.74%	424	18.66%	1751	77.07%	2272	

Notes:

1. Some faculty split time between Denver & Boulder.
2. Excludes Deans, Associate and Assistant Deans.
3. Data as of November 1, 2007.

Source:

Fall Staff Employee database, Office of Institutional Research, Planning & Analysis

**FULL-TIME INSTRUCTIONAL FACULTY
2007-2008**

DISTRIBUTION BY ETHNICITY

<u>School/College</u>	<u>Total Minority</u>		<u>White</u>		<u>Non-Res Alien</u>		<u>Unknown</u>		<u>Total</u>
	<u>N</u>	<u>%</u>	<u>N</u>	<u>%</u>	<u>N</u>	<u>%</u>	<u>N</u>	<u>%</u>	<u>N</u>
DOWNTOWN CAMPUS									
Architecture and Planning-Combined¹	4	8%	43	84%	1	2%	3	6%	51
Architecture and Planning-Denver	3	8%	33	83%	1	3%	3	8%	40
Architecture and Planning-Boulder	1	9%	10	91%		0%		0%	11
Arts and Media	5	9%	45	80%	1	2%	5	9%	56
Business	12	18%	47	72%	2	3%	4	6%	65
Liberal Arts and Sciences	25	12%	162	77%	6	3%	17	8%	210
Education	12	20%	47	77%		0%	2	3%	61
Engineering	8	21%	23	61%	4	11%	3	8%	38
Public Affairs	2	13%	11	73%		0%	2	13%	15
DC SUBTOTAL	68	14%	378	76%	14	3%	36	7%	496
Auraria Library	4	19%	17	81%		0%		0%	21
DC TOTAL	72	14%	395	76%	14	3%	36	7%	517
ANSCHUTZ MEDICAL CENTER									
Dentistry	7	12%	44	77%	3	5%	3	5%	57
Medicine	153	10%	1151	74%	57	4%	200	13%	1561
Nursing	5	8%	58	89%		0%	2	3%	65
Pharmacy	8	15%	41	75%	4	7%	2	4%	55
AMC SUBTOTAL	173	10%	1294	74%	64	4%	207	12%	1738
Dennison Library	2	12%	12	71%		0%	3	18%	17
AMC TOTAL	175	10%	1306	74%	64	4%	210	12%	1755
UCD SUBTOTAL	241	11%	1672	75%	78	3%	243	11%	2234
UCD TOTAL	247	11%	1701	75%	78	3%	246	11%	2272

Notes:

1. Some faculty split time between Denver & Boulder.
2. Excludes Deans, Associate and Assistant Deans.
3. Data as of November 1, 2007.

Source:

Fall Staff Employee database, Office of Institutional Research, Planning & Analysis

**FULL-TIME INSTRUCTIONAL FACULTY
2007-2008**

DISTRIBUTION BY TENURE STATUS

School/College	Non-Tenure Track		Tenure Track		Tenured		Clinical Track		Total	%
	Male	Female	Male	Female	Male	Female	Male	Female		
DOWNTOWN CAMPUS										
Architecture and Planning-Combined ¹	13	7	8	1	14	7		1	51	41%
Architecture and Planning-Denver	10	6	7	1	12	3		1	40	38%
Architecture and Planning-Boulder	3	1	1	0	2	4			11	55%
Arts and Media	13	11	14	6	9	3			56	21%
Business	12	8	6	4	24	11			65	54%
Liberal Arts and Sciences	40	42	20	14	65	29			210	45%
Education	5	19	5	8	9	15			61	39%
Engineering	5	0	7	1	22	3			38	66%
Public Affairs	0	0	1	3	8	3			15	73%
DC SUBTOTAL	88	87	61	37	151	71	0	1	496	45%
Auraria Library	3	14	2	2	0	0	0	0	21	0%
DC TOTAL	91	101	63	39	151	71	0	1	517	43%
ANSCHUTZ MEDICAL CENTER										
Dentistry	7	5	4	1	17	3	13	7	57	35%
Medicine	197	375	414	330	199	41	4	1	1561	15%
Nursing	0	33	2	7	0	18	0	5	65	28%
Pharmacy	0	4	9	4	12	2	12	12	55	25%
AMC SUBTOTAL	204	417	429	342	228	64	29	25	1738	17%
Dennison Library	6	11							17	0%
AMC TOTAL	210	428	429	342	228	64	29	25	1755	17%
UCD SUBTOTAL	292	504	490	379	379	135	29	26	2234	23%
UCD TOTAL	301	529	492	381	379	135	29	26	2272	23%

DISTRIBUTION BY RANK

School/College	Professor		Assoc. Professor		Asst. Professor		Sr Instructor/ Instructor		Clinical		Total
	Male	Female	Male	Female	Male	Female	Male	Female	Male	Female	
DOWNTOWN CAMPUS											
Architecture and Planning-Combined ¹	5	6	12	1	5	1	13	7		1	51
Architecture and Planning-Denver	4	2	11	1	4	1	10	6		1	40
Architecture and Planning-Boulder	1	4	1	0	1	0	3	1			11
Arts and Media	1	1	8	2	14	6	13	11			56
Business	14	4	12	8	4	3	12	8			65
Liberal Arts and Sciences	27	8	39	21	19	14	40	42			210
Education	6	2	3	14	5	7	5	19			61
Engineering	14	3	8	0	7	1	5	0			38
Public Affairs	7	0	1	3	1	3	0	0			15
DC SUBTOTAL	74	24	83	49	55	35	88	87	0	1	496
Auraria Library					2	2	3	14			21
DC TOTAL	74	24	83	49	57	37	91	101	0	1	517
ANSCHUTZ MEDICAL CENTER											
Dentistry	15	3	17	4	6	3	0	1	3	5	57
Medicine	245	56	194	135	206	211	165	344	4	1	1561
Nursing	0	9	1	14	1	17	0	18	0	5	65
Pharmacy	11	0	2	2	8	4	0	4	12	12	55
AMC SUBTOTAL	271	68	214	155	221	235	165	367	19	23	1738
Dennison Library			2		2	4	2	7			17
AMC TOTAL	271	68	216	155	223	239	167	374	19	23	1755
UCD SUBTOTAL	345	92	297	204	276	270	253	454	19	24	2234
UCD TOTAL	345	92	299	204	280	276	258	475	19	24	2272

Notes:

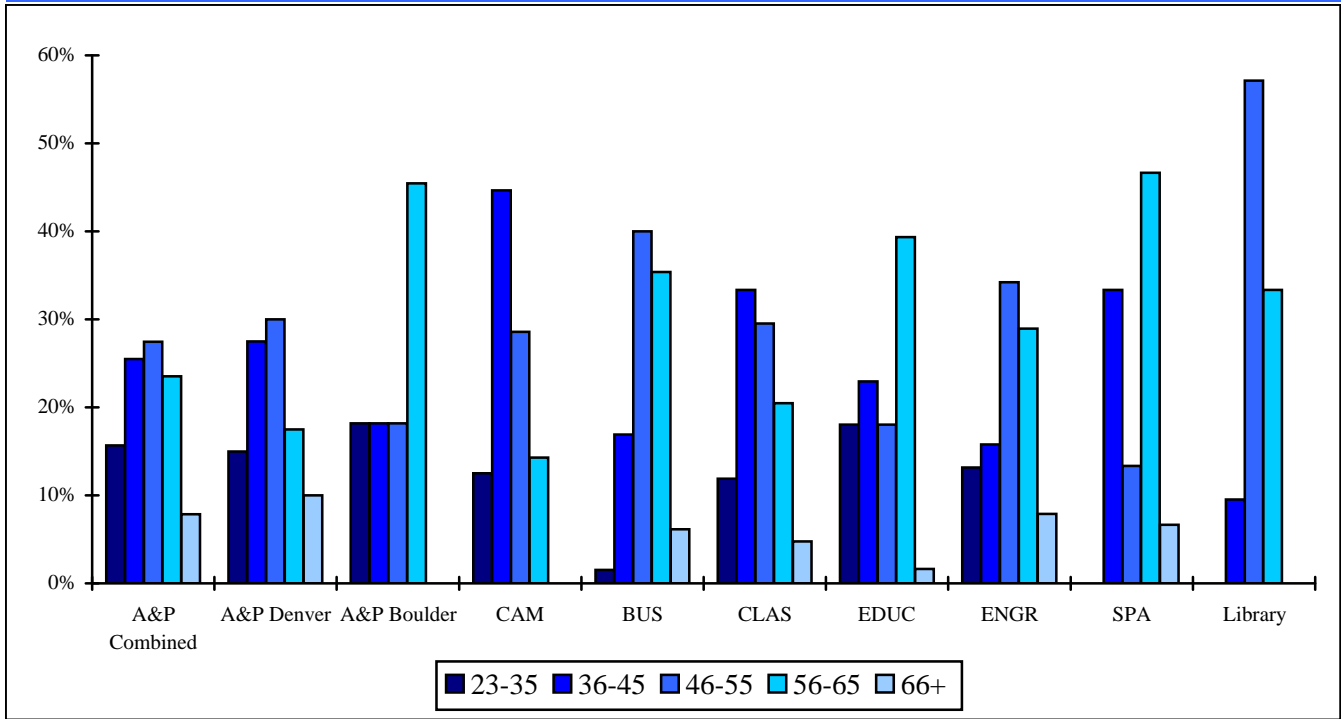
1. Some faculty split time between Denver & Boulder.
2. Excludes Deans, Associate and Assistant Deans.
3. Data as of November 1, 2007.

Source:

Fall Staff Employee database, Office of Institutional Research, Planning & Analysis

**FULL-TIME INSTRUCTIONAL FACULTY
DISTRIBUTION BY AGE**

DOWNTOWN CAMPUS



<u>School/College</u>	<u>N</u>	<u>% 23-35</u>	<u>% 36-45</u>	<u>% 46-55</u>	<u>% 56-65</u>	<u>% 66+</u>
Architecture and Planning-Combined¹	51	16%	25%	27%	24%	8%
Architecture and Planning-Denver	40	15%	28%	30%	18%	10%
Architecture and Planning-Boulder	11	18%	18%	18%	45%	0%
Arts and Media	56	13%	45%	29%	14%	0%
Business	65	2%	17%	40%	35%	6%
Liberal Arts and Sciences	210	12%	33%	30%	20%	5%
Education	61	18%	23%	18%	39%	2%
Engineering	38	13%	16%	34%	29%	8%
Public Affairs	15	0%	33%	13%	47%	7%
DC SUBTOTAL	496	11%	29%	29%	26%	5%
Auraria Library	21	0%	10%	57%	33%	0%
DC TOTAL	517	11%	28%	30%	26%	4%

Notes:

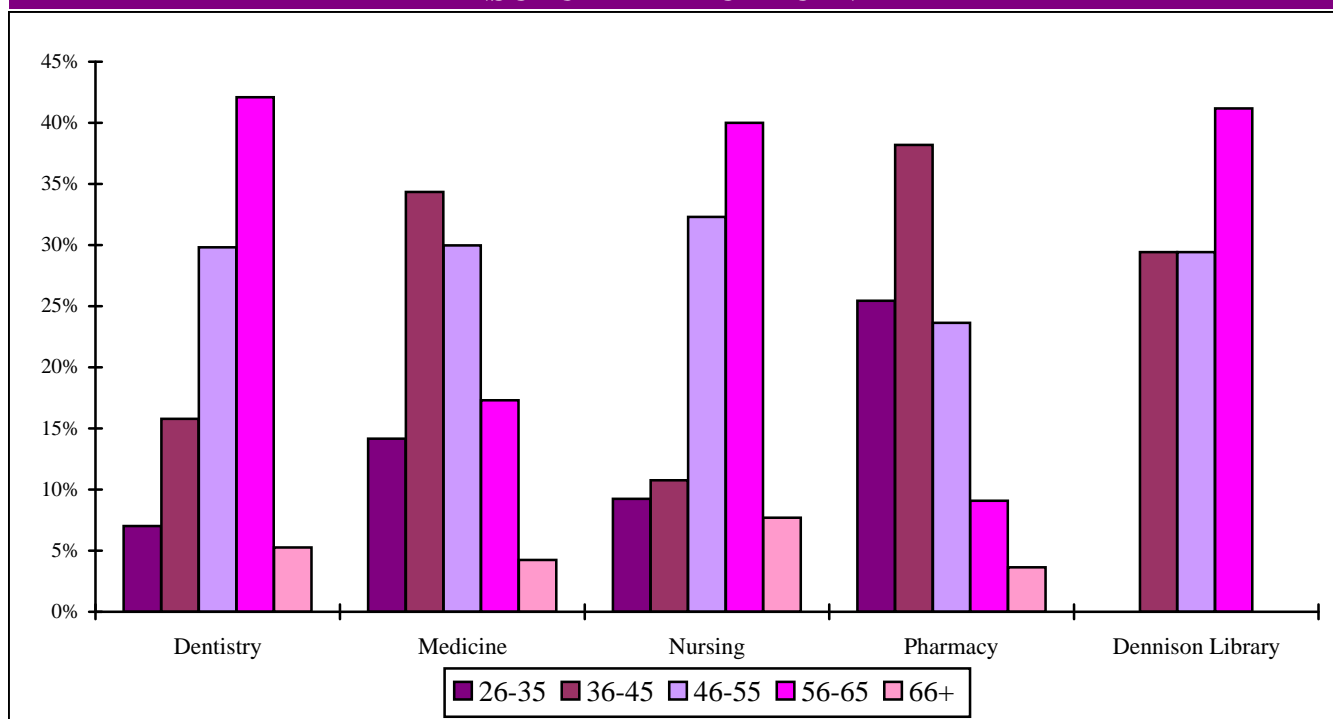
1. Some faculty split time between Denver & Boulder.
2. Excludes Deans, Associate and Assistant Deans.
3. Data as of November 1, 2007.

Source:

Fall Staff Employee database, Office of Institutional Research, Planning & Analysis

**FULL-TIME INSTRUCTIONAL FACULTY
DISTRIBUTION BY AGE**

ANSCHUTZ MEDICAL CENTER



<u>School/College</u>	<u>N</u>	<u>%</u> <u>26-35</u>	<u>%</u> <u>36-45</u>	<u>%</u> <u>46-55</u>	<u>%</u> <u>56-65</u>	<u>%</u> <u>66+</u>
Dentistry	57	7%	16%	30%	42%	5%
Medicine	1561	14%	34%	30%	17%	4%
Nursing	65	9%	11%	32%	40%	8%
Pharmacy	55	25%	38%	24%	9%	4%
AMC SUBTOTAL	1738	14%	33%	30%	19%	4%
Dennison Library	17	0%	29%	29%	41%	0%
AMC TOTAL	1755	14%	33%	30%	19%	4%
UCD SUBTOTAL	2234	14%	32%	30%	20%	4%
UCD TOTAL	2272	13%	32%	30%	21%	4%

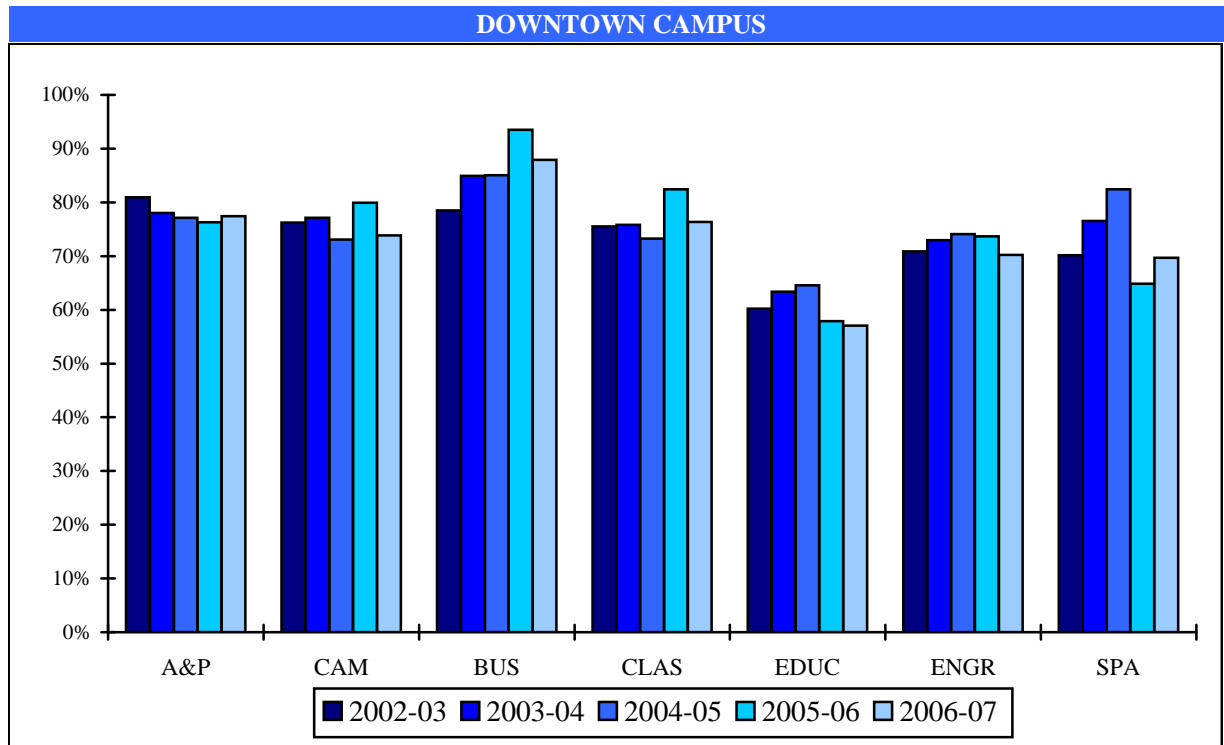
Notes:

1. Some faculty split time between Denver & Boulder.
2. Excludes Deans, Associate and Assistant Deans.
3. Data as of November 1, 2007.

Source:

Fall Staff Employee database, Office of Institutional Research, Planning & Analysis

**PERCENT FULL-TIME INSTRUCTIONAL FACULTY
2002-2003 THROUGH 2006-2007**



<u>School/College</u>	<u>FY</u> <u>2002-03</u>	<u>FY</u> <u>2003-04</u>	<u>FY</u> <u>2004-05</u>	<u>FY</u> <u>2005-06</u>	<u>FY</u> <u>2006-07</u>
Architecture and Planning-Denver¹	81%	78%	77%	76%	77%
Arts and Media	76%	77%	73%	80%	74%
Business	78%	85%	85%	93%	88%
Liberal Arts and Sciences	75%	76%	73%	82%	76%
Education	60%	63%	65%	58%	57%
Engineering	71%	73%	74%	74%	70%
Public Affairs	70%	77%	82%	65%	70%
TOTAL Downtown Denver Campus	73%	75%	74%	78%	74%

Notes:

1. Architecture & Planning does not include faculty for the undergraduate Environmental Design program taught in Boulder.
2. Comparable data for the Health Sciences Center is not available.

Source:

Prior to 00-01, Budget Office FTE Faculty Reports
After 00-01, Institutional Research FY Clear All report

**FTE INSTRUCTIONAL FACULTY
2002-2003 THROUGH 2006-2007**

DOWNTOWN DENVER CAMPUS					
	<u>2002-2003</u>	<u>2003-2004</u>	<u>2004-2005</u>	<u>2005-2006</u>	<u>2006-2007</u>
ARCHITECTURE AND PLANNING¹	38.3	36.0	40.0	43.1	39.4
ARTS AND MEDIA	57.3	54.0	59.1	64.1	63.9
BUSINESS	78.9	75.6	77.1	72.1	82.0
LIBERAL ARTS AND SCIENCES	254.6	246.3	251.2	269.4	271.3
Anthropology	9.4	9.2	10.9	15.0	8.6
Biology	18.3	17.3	19.6	19.2	20.0
Chemistry	13.3	14.0	12.0	15.1	14.8
Communication	20.3	18.1	18.0	17.9	19.1
Economics	12.9	13.4	13.6	14.6	13.0
English	33.1	32.3	35.1	36.9	39.5
Environmental Sciences	2.5	3.7	3.8	5.4	3.5
Ethnic Studies	2.5	2.1	2.6	3.1	3.6
French	4.2	3.1	3.3	3.8	3.3
Geography	5.2	5.8	5.8	6.7	7.1
Geology	3.9	3.6	3.1	2.7	3.0
German	2.4	2.0	2.0	2.0	2.0
Health and Behavioral Sciences	3.7	3.9	4.0	5.2	4.8
History	13.4	13.1	14.6	15.0	14.9
Humanities	1.9	2.4	2.2	2.9	2.9
Interdisciplinary	1.9	2.7	1.9	2.6	3.0
Mathematics	31.5	31.9	32.1	31.1	32.0
Modern Languages	2.6	1.0	1.1	1.2	1.0
Philosophy	11.6	10.9	10.3	10.7	11.8
Physics	9.5	8.7	8.0	9.8	12.2
Political Science	13.2	12.6	12.0	12.9	12.3
Psychology	16.5	15.9	17.3	16.1	18.0
Sociology	8.9	9.3	9.0	10.1	10.5
Spanish	12.0	9.5	9.3	9.7	10.5
EDUCATION	82.9	82.4	83.4	74.1	84.7
ENGINEERING	53.7	54.8	50.1	52.6	52.5
Civil Engineering	15.2	15.7	15.8	16.9	18.1
Computer Science	18.0	18.8	15.4	15.7	12.6
Electrical Engineering	10.4	10.4	10.2	10.8	12.9
Mechanical Engineering	10.1	9.9	8.7	9.3	8.9
PUBLIC AFFAIRS	19.5	20.2	19.6	20.5	18.2
DC TOTAL	585.1	569.3	580.5	595.8	611.9

Notes:

1. Architecture & Planning does not include students from the undergraduate Environmental Design programs taught in Boulder.

Source:

Prior to 00-01, Budget Office FTE Faculty Reports
After 00-01, Institutional Research FY Clear All report

**STUDENT/FACULTY RATIOS
BY SCHOOL/COLLEGE AND DEPARTMENT
2002-2003 THROUGH 2006-2007**

DOWNTOWN CAMPUS					
	<u>2002-2003</u>	<u>2003-2004</u>	<u>2004-2005</u>	<u>2005-2006</u>	<u>2006-2007</u>
ARCHITECTURE AND PLANNING¹	9.44	10.94	11.22	9.67	10.62
ARTS AND MEDIA	12.60	12.58	12.79	13.30	13.64
BUSINESS	20.39	20.75	19.08	19.42	16.83
LIBERAL ARTS AND SCIENCES	16.08	17.04	17.72	16.68	17.36
Anthropology	17.23	18.40	14.38	9.98	17.71
Biology	18.08	21.60	20.19	20.90	22.77
Chemistry	17.70	18.07	20.72	17.05	18.12
Communication	16.66	18.55	18.56	19.66	17.87
Economics	19.33	19.34	19.40	17.48	21.08
English	14.49	15.59	16.25	16.06	15.45
French	10.59	9.48	11.51	10.79	12.68
Geography	12.91	13.85	14.75	13.18	13.77
Geology	10.44	11.90	12.42	11.86	13.34
German	11.80	12.00	14.62	11.15	13.50
History	14.32	15.83	17.15	16.36	16.65
Mathematics	14.68	13.94	13.31	12.93	12.86
Philosophy	18.33	19.00	20.55	19.92	19.37
Physics	18.06	21.03	24.19	19.57	17.33
Political Science	15.39	17.31	19.29	16.57	18.13
Psychology	20.63	23.05	24.29	27.43	26.24
Sociology	24.72	26.48	29.96	27.95	27.23
Spanish	14.75	12.67	13.59	13.56	12.84
EDUCATION	10.88	11.63	11.12	12.02	9.94
ENGINEERING	10.66	9.74	10.04	8.90	9.04
PUBLIC AFFAIRS	9.34	8.63	8.41	6.92	8.23
TOTAL Downtown Campus	14.37	15.07	15.14	14.54	14.45

Notes:

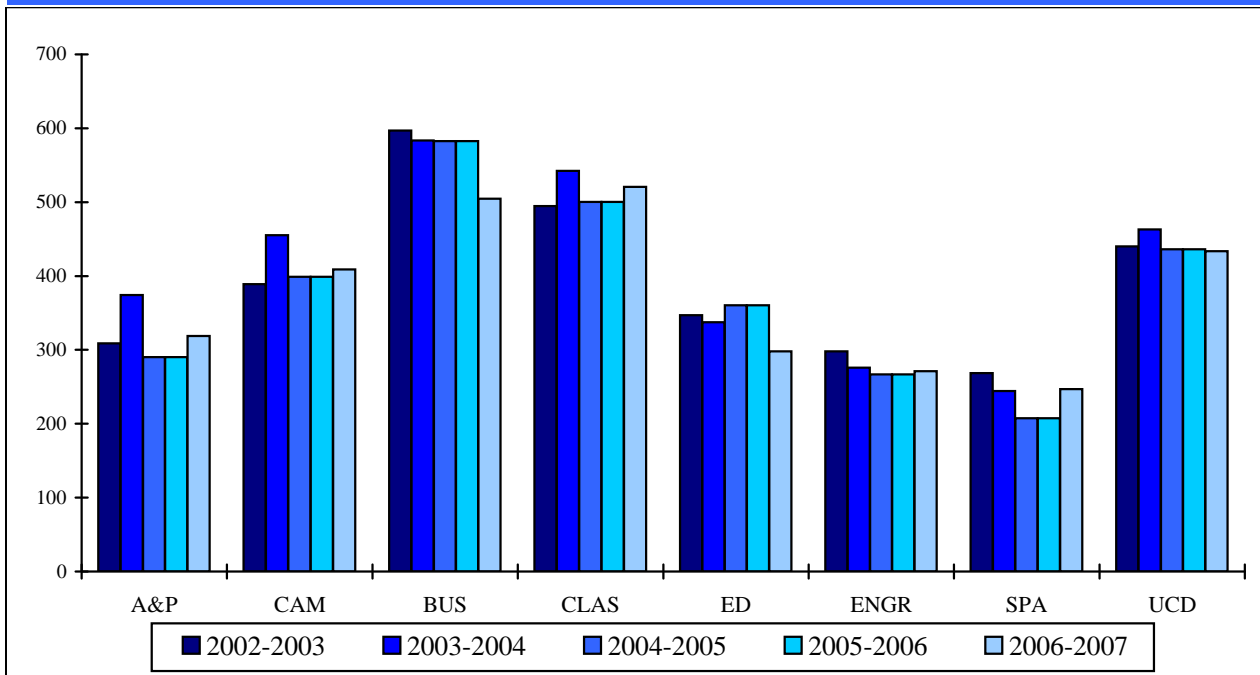
1. Architecture & Planning does not include students from the undergraduate programs taught in Boulder.

Source:

FTES from Student Section of this report divided by FTEF from previous page.
Office of Institutional Research, Planning and Analysis

**STUDENT CREDIT HOURS PER FTE FACULTY BY SCHOOL
2002-2003 THROUGH 2006-2007**

DOWNTOWN CAMPUS



	<u>FY</u> <u>2002-2003</u>	<u>FY</u> <u>2003-2004</u>	<u>FY</u> <u>2004-2005</u>	<u>FY</u> <u>2005-2006</u>	<u>FY</u> <u>2006-2007</u>
Architecture and Planning-Denver¹	308.8	374.1	290.2	290.2	318.7
Arts and Media	389.0	455.1	399.1	399.1	409.1
Business	596.7	583.5	582.7	582.7	504.9
Liberal Arts and Sciences	494.6	542.4	500.3	500.3	520.8
Education	346.9	337.6	360.5	360.5	298.1
Engineering	298.1	275.7	267.0	267.0	271.3
Public Affairs	268.4	244.2	207.6	207.6	246.9
TOTAL Downtown Campus	439.9	463.0	436.2	436.2	433.6

Notes:

1. Architecture & Planning does not include faculty for the undergraduate program in Boulder.

Source:

Prior to 00-01, Budget Office FTE Faculty Reports

After 00-01, Institutional Research FY Clear All report

**FULL-TIME STAFF
DISTRIBUTION BY GENDER
2007-2008**

School/College	Male		Female		Total
	N	%	N	%	N
DOWNTOWN CAMPUS					
Architecture and Planning	9	35%	17	65%	26
Arts and Media	8	53%	7	47%	15
Business	10	29%	24	71%	34
Liberal Arts and Sciences	10	19%	44	81%	54
Education	10	20%	40	80%	50
Engineering	6	40%	9	60%	15
Public Affairs	6	24%	19	76%	25
Auraria Library	14	28%	36	72%	50
DC TOTAL	73	27%	196	73%	269
ANSCHUTZ MEDICAL CENTER					
Dentistry	13	14%	77	86%	90
Medicine	125	22%	446	78%	571
Nursing	4	10%	38	90%	42
Pharmacy	10	31%	22	69%	32
Graduate School	1	20%	4	80%	5
Dennison Library	9	43%	12	57%	21
AMC TOTAL	162	21%	599	79%	761
Consolidated Administrative Units	416	52%	388	48%	804
UCD TOTAL	651	35%	1183	65%	1834

**PART-TIME STAFF
DISTRIBUTION BY GENDER
2007-2008**

School/College	Male		Female		Total
	N	%	N	%	N
DOWNTOWN CAMPUS					
Architecture and Planning	2	100%		0%	2
Arts and Media		0%		0%	0
Business		0%	1	100%	1
Liberal Arts and Sciences		0%	1	100%	1
Education	1	33%	2	67%	3
Engineering		0%		0%	0
Public Affairs	1	100%		0%	1
Auraria Library		0%		0%	0
DC TOTAL	4	50%	4	50%	8
ANSCHUTZ MEDICAL CENTER					
Dentistry	1	50%	1	50%	2
Medicine	21	68%	10	32%	31
Nursing		0%		0%	0
Pharmacy		0%	1	100%	1
Graduate School		0%	1	100%	1
Dennison Library		0%		0%	0
AMC TOTAL	22	63%	13	37%	35
Consolidated Administrative Units	4	29%	10	71%	14
UCD TOTAL	30	53%	27	47%	57

Notes:

1. Numbers may vary from IPEDS data due to IPEDS definitions.
2. Includes Deans, Associate and Assistant Deans
3. Data as of November 1, 2007.

Source:

Fall Staff Employee database, Office of Institutional Research, Planning & Analysis

**FULL-TIME STAFF
DISTRIBUTION BY ETHNICITY
2007-2008**

School/College	Total Minority		White		Non-Res Alien		Unknown		Total
	N	%	N	%	N	%	N	%	N
DOWNTOWN CAMPUS									
Architecture and Planning	5	19%	19	73%		0%	2	8%	26
Arts and Media	1	7%	11	73%		0%	3	20%	15
Business	8	24%	23	68%		0%	3	9%	34
Liberal Arts and Sciences	16	30%	36	67%	1	2%	1	2%	54
Education	11	22%	35	70%	3	6%	1	2%	50
Engineering	3	20%	9	60%		0%	3	20%	15
Public Affairs	5	20%	17	68%		0%	3	12%	25
Auraria Library	10	20%	38	76%		0%	2	4%	50
DC TOTAL	59	22%	188	70%	4	1%	18	7%	269
ANSCHUTZ MEDICAL CENTER									
Dentistry	42	47%	46	51%		0%	2	2%	90
Medicine	123	22%	385	67%	5	1%	58	10%	571
Nursing	11	26%	28	67%		0%	3	7%	42
Pharmacy	7	22%	22	69%	1	3%	2	6%	32
Graduate School	1	20%	4	80%		0%		0%	5
Dennison Library	3	14%	12	57%		0%	6	29%	21
AMC TOTAL	187	25%	497	65%	6	1%	71	9%	761
Consolidated Administrative Units	222	28%	519	65%	12	1%	51	6%	804
UCD TOTAL	468	26%	1204	66%	22	1%	140	8%	1834

**PART-TIME STAFF
DISTRIBUTION BY ETHNICITY
2007-2008**

School/College	Total Minority		White		Non-Res Alien		Unknown		Total
	N	%	N	%	N	%	N	%	N
DOWNTOWN CAMPUS									
Architecture and Planning		0%	2	100%		0%		0%	2
Arts and Media		0%		0%		0%		0%	0
Business		0%	1	100%		0%		0%	1
Liberal Arts and Sciences		0%	1	100%		0%		0%	1
Education		0%	3	100%		0%		0%	3
Engineering		0%		0%		0%		0%	0
Public Affairs		0%	1	100%		0%		0%	1
Auraria Library		0%		0%		0%		0%	0
DC TOTAL	0	0%	8	100%	0	0%	0	0%	8
ANSCHUTZ MEDICAL CENTER									
Dentistry	1	50%	1	50%		0%		0%	2
Medicine	2	6%	24	77%		0%	5	16%	31
Nursing		0%		0%		0%		0%	0
Pharmacy	1	100%		0%		0%		0%	1
Graduate School		0%		0%		0%	1	100%	1
Dennison Library		0%		0%		0%		0%	0
AMC TOTAL	4	11%	25	71%	0	0%	6	17%	35
Consolidated Administrative Units	2	14%	11	79%	0	0%	1	7%	14
UCD TOTAL	6	11%	44	77%	0	0%	7	12%	57

Notes:

1. Numbers may vary from IPEDS data due to IPEDS definitions.
2. Includes Deans, Associate and Assistant Deans
3. Data as of November 1, 2007.

Source:

Fall Staff Employee database, Office of Institutional Research, Planning & Analysis

**Section VI.
Financial Data**

FINANCIAL AID AWARDS 2006-2007

	No. of Recipients 2006-2007	Awards in \$ 2006-2007
<u>FEDERAL GRANTS</u>		
Pell	2226	6,000,483.00
Graduate Research Traineeships	622	2,836,613.00
Armed Services Scholarships	46	665,058.00
SEOG	266	478,340.00
Schol to Disadvantaged Students	42	118,059.00
CSIG/CLEAP/SLEAP	63	191,657.00
BIA/Indian Fellowship	4	12,864.00
National Health Service Scholarship	4	98,222.00
Indian Health Service	1	10,405.00
Americorp	156	291,936.51
Academic Competiveness Grant (ACG)	110	83,900.00
National Smart Grant	74	197,404.00
 Sub-Total Federal Grant	 3614	 10,984,941.51
<u>STATE GRANTS</u>		
Colorado Student Grant	1358	2,274,101.00
Grad Need	790	1,878,293.00
Governor's Opportunity Scholarship	79	587,669.00
Undergraduate Merit	122	108,455.00
Colorado Fellowship		
Gear Up	10	19,378.00
Pre-Collegiate ACG	99	29,026.00
 Sub-Total State Grant	 2458	 4,848,518.00
<u>INSTITUTIONAL AWARDS</u>		
CU - Denver Need-Based Aid	1558	1,755,051.00
Virginia T. Schuman Scholarship	159	218,300.50
Advantage Scholarship/CU-Promise	89	245,694.00
Albertson's Scholarship	11	162,642.00
Chancellor's Diversity Scholarship	69	210,064.00
Orthodontic Education Comp	11	37,774.00
Cheley Scholarship	42	119,000.00
CU - HSC Need Grant	205	597,200.00
Displaced Aurarians	25	143,056.48
Chancellor's Scholars & Leaders	42	84,000.00
McClymonds Scholarship	30	76,807.00
Urban Scholarship	43	61,250.00
ARCS Scholarship	8	40,000.00
Williams Family Foundation	5	26,500.00
Adler Scholarship	8	59,000.00
Chancellor's Scholarship	10	14,000.00
Whitehead Scholarship	5	40,000.00
School of Pharmacy Scholarship	17	27,700.00
Employee Waiver	293	393,901.00
Helene Fuld Health Trust	10	20,000.00
Sutley Scholarship	8	21,500.00

FINANCIAL AID AWARDS 2006-2007

	No. of Recipients 2006-2007	Awards in \$ 2006-2007
Employee - Spouse/Child Scholarship	34	29,841.00
Arnold	3	4,250.00
Harry Paul Scholarship	7	20,700.00
Nelson/Running Wolf	19	20,300.00
Campbell Scholarship	4	12,000.00
(continued)		
Bruce Tidwell Scholarship	5	12,000.00
Theresa McMahan Scholarship	1	14,108.00
Dean's Scholarship	172	136,229.00
Timpte-Brownlie Scholarship	4	10,000.00
O'Kelley Scholarship	3	15,000.00
Benjamin Brown Int'l Research	1	10,000.00
Medical School Scholarship		0.00
Judith Albino Scholarship	2	6,200.00
Mary Mercer Fund	3	12,500.00
Medical Center Student Scholarship		0.00
Colorado Medical Society Scholarship	4	28,000.00
Bakemeier Scholarship	2	3,400.00
Class of 1932 Scholarship		0.00
C&L Hartman Scholarship	2	3,250.00
CU - HSC Endowment		0.00
Dora Wright Scholarship	2	4,000.00
Eglee Scholarship	1	3,000.00
Miles Markley Scholarship	2	4,000.00
Schl of Denistry Alumni Scholarship	6	3,000.00
Ahlin		0.00
Rutherford Scholarship	2	4,000.00
Callaway Scholarship	5	5,000.00
Pearl Coulter Scholarship	1	2,000.00
Rudolph Deluise Achievement	1	500.00
Willard Smith Scholarship		0.00
Carrie Stark Scholarship	1	2,000.00
CU Faculty/Staff Scholarship	10	6,425.00
Gottsfeld Memorial Award	1	1,250.00
Hoyt Parker Scholarship	1	1,200.00
Coalition (formerly Elway)		0.00
40/8 Voiture 97 Scholarship		0.00
General Nursing Scholarship	1	2,000.00
Rose McKay Scholarship		0.00
Robert Glaser Award		0.00
Pediatric Dentistry		0.00
Stan Ladd Scholarship	1	500.00
Reisher Scholars	43	263,830.00
Miscellaneous Scholarships	876	2,803,462.00
CLAS Adjustment		0.00
 Sub-Total Institutional Awards	 3868	 7,797,384.98

FINANCIAL AID AWARDS 2006-2007

	No. of Recipients 2006-2007	Awards in \$ 2006-2007
<u>LOANS</u>		
Stafford Loan	7253	40,744,668.00
Unsubsidized Stafford Loan	6625	58,877,133.00
Perkins Loan	254	694,596.00
PLUS/SLS	589	5,897,535.00
Federal Grad PLUS	637	5,368,280.00
Undergraduate Federal Nursing Loan	142	560,600.00
Loan to Disadvantaged Students	35	228,745.00
L.H. Fahrenbrink Loan	56	165,000.00
(continued)		
Graduate Federal Nursing Loan	33	119,495.00
Health Professions Loan	21	476,396.00
Medical Center Loan	37	108,000.00
Francis McNaught Loan	6	17,700.00
Regent's Loan	2	6,000.00
Kellogg Loan		0.00
V.R. Boynton Loan	19	53,500.00
George Wright Loan	6	15,000.00
Centennial Loan	9	24,500.00
R.W. Johnson Loan	12	36,000.00
Alternative Loans	565	6,030,989.00
 Sub-Total Loan	 16301	 119,424,137.00
<u>WORK PROGRAMS</u>		
Federal Work-Study	303	949,723.00
Colorado Work-Study	214	716,565.00
Colorado No Need Work-Study	26	102,501.00
 Sub-Total Work	 543	 1,768,789.00
 Grand Total		 144,823,770.49

Source: Office of Financial Aid

**UC DENVER REVENUE AND EXPENDITURES
STATE APPROPRIATIONS
FISCAL YEAR 2006-2007**

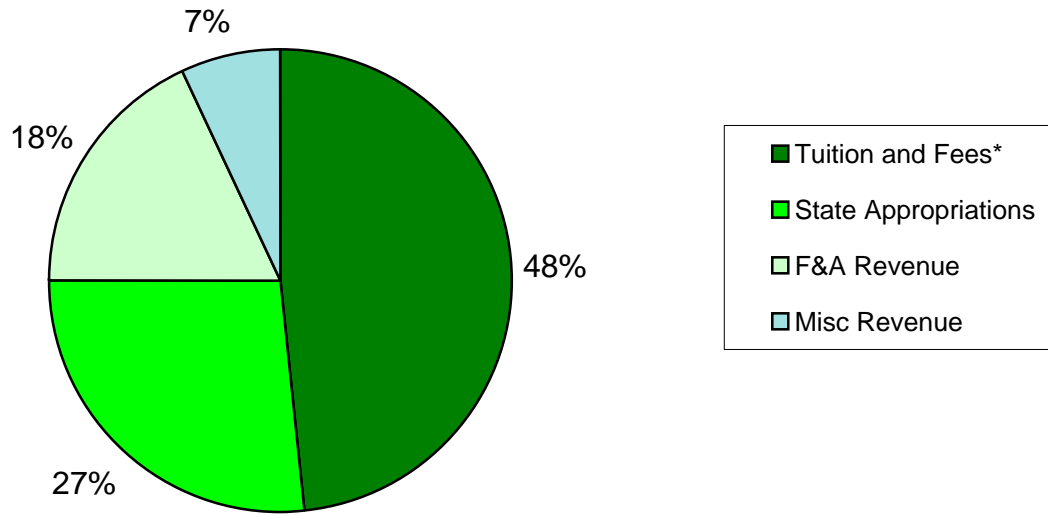
<u>REVENUE</u>	FY 2006-2007
Tuition and Fees*	\$130,315,011
State Appropriations	\$72,064,766
F&A Revenue	\$48,231,020
Misc Revenue	\$18,783,805
Total Revenue	\$269,394,602
 <u>EXPENDITURES</u>	
Instruction	\$113,042,299
Research (State Supported)	\$2,386,976
Public Service	\$606,913
Academic Support	\$35,301,292
Student Services	\$6,473,044
Institutional Support	\$29,267,268
Operation and Maint. of Plant	\$32,263,985
Scholarships and Fellowships	\$1,433,077
Health Services	\$4,270
Transfers	\$41,907,263
Scholarship Allow Net	\$4,838,440
Fixed Asset additions and Plant Fund Activity	\$5,522,877
Total Expenditures	\$273,047,704

Source: Campus Financial Statement (SRECNA), UCD

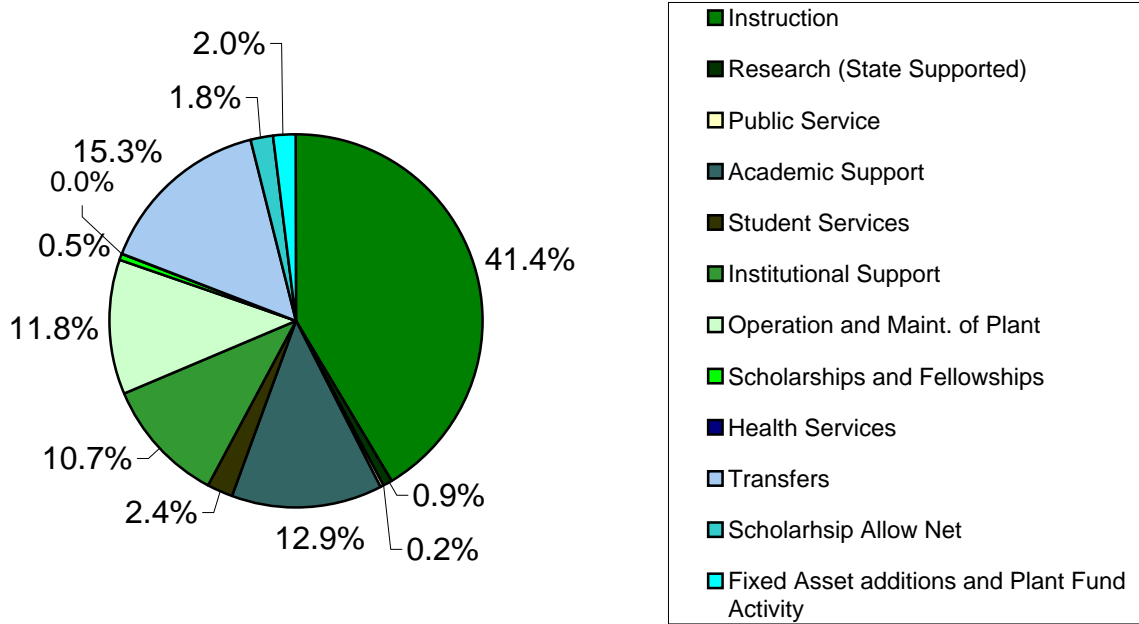
* Includes COF of \$16,634,712

ID Revenue is netted with Institutional Support

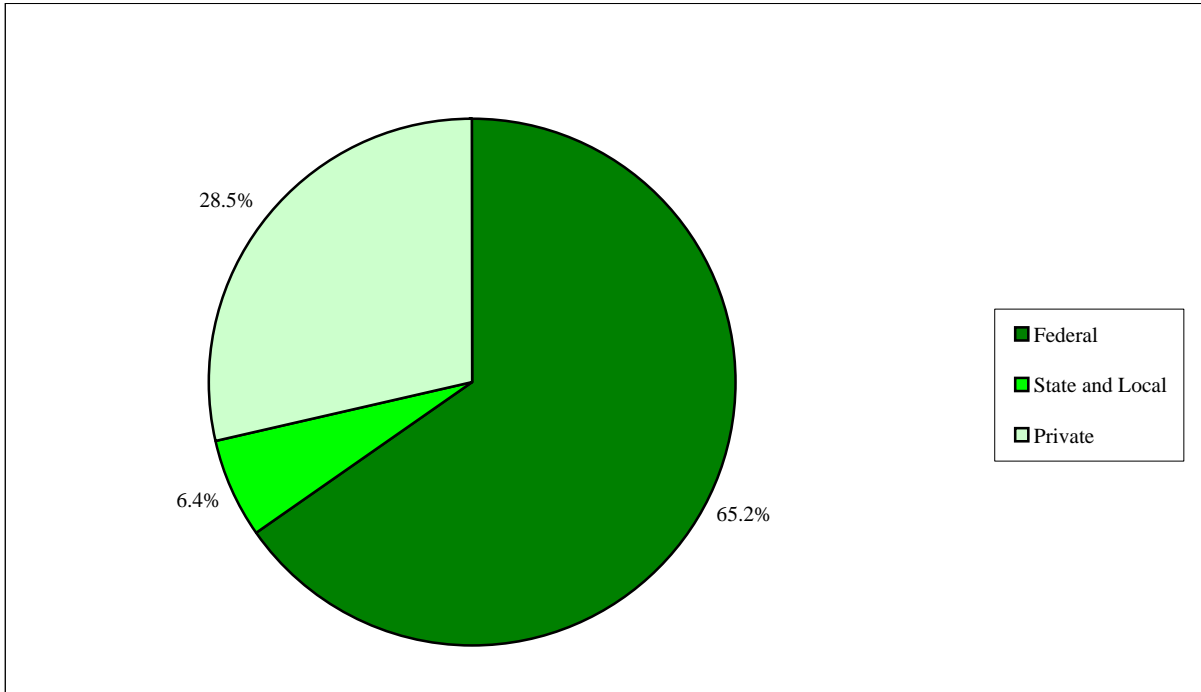
REVENUE UC Denver FY 2006-2007



EXPENDITURES UC Denver FY 2006-2007



**UNIVERSITY OF COLORADO DENVER CONTRACT AND GRANT AWARDS BY
FUNDING SOURCE
FISCAL YEAR 2006-2007**



Federal	65.2%	\$236,847,817
State and Local	6.4%	\$23,080,629
Private	28.5%	\$103,492,695
TOTAL	100.0%	\$363,421,142

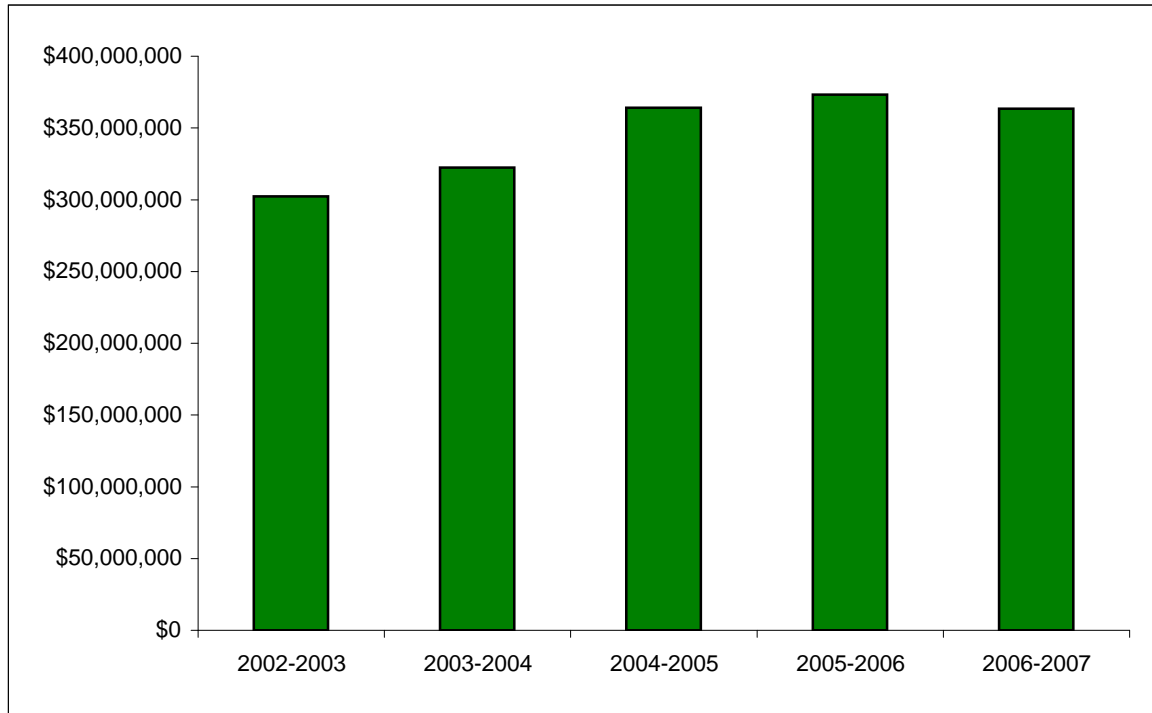
Notes:

1. Federal figure includes multiple funding sources.

Source:

Office of Sponsored Programs FY 2007 Year End Report

**UNIVERSITY OF COLORADO DENVER
TOTAL CONTRACTS AND GRANTS AWARDED
FISCAL YEARS 2002-2003 THROUGH 2006-2007**



<u>Fiscal Year</u>	<u>Total Awards</u>	<u>Percent Change from Previous Year</u>
2002-2003	\$302,232,874	-4.0%
2003-2004	\$322,505,587	6.7%
2004-2005	\$363,993,850	12.9%
2005-2006	\$373,300,684	15.8%
2006-2007	\$363,421,142	-0.2%

Source:
Office of Sponsored Programs FY 2007 Year End Report

**CONTRACT AND GRANTS AWARDS BY ORGANIZATIONAL UNIT
JULY 1, 2006 TO JUNE 30, 2007.**

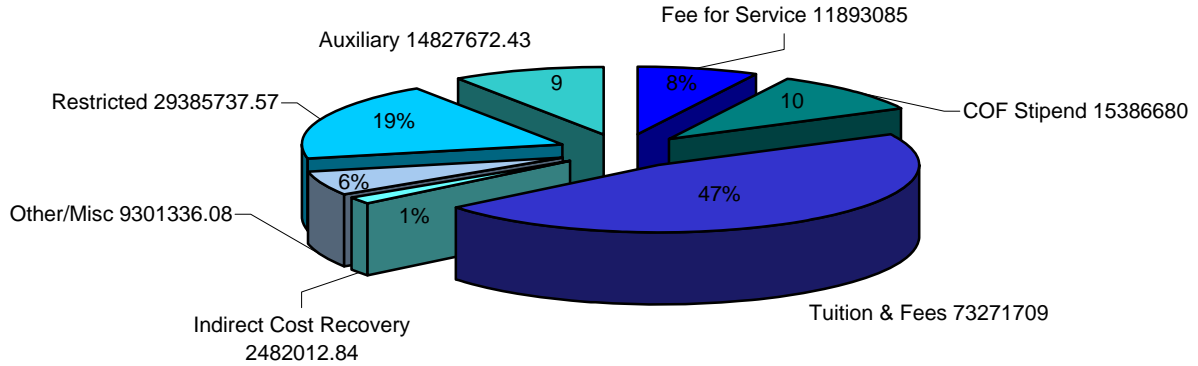
School/College or Department	Amount of Awards
DOWNTOWN CAMPUS	
Architecture & Planning	\$842,421
Arts & Media	\$118,118
Business	\$0
Education	\$4,809,094
Engineering	\$1,276,757
Liberal Arts & Sciences	\$5,303,258
Public Affairs	\$1,343,077
Library	\$0
Office of Academic and Student Affairs *	\$6,117,663
Sub-Total DC Campus	\$19,810,388
ANSCHUTZ MEDICAL CAMPUS	
Office of the Chancellor	\$1,758,698
School of Dental Medicine	
School of Medicine	\$323,539,942
School of Nursing	\$2,515,059
School of Pharmacy	\$12,953,231
Sub-Total AMC Campus	\$340,766,930
TOTAL UCD	\$360,577,318

Source:

Office of Sponsored Programs June, FY 2007 Year End Report

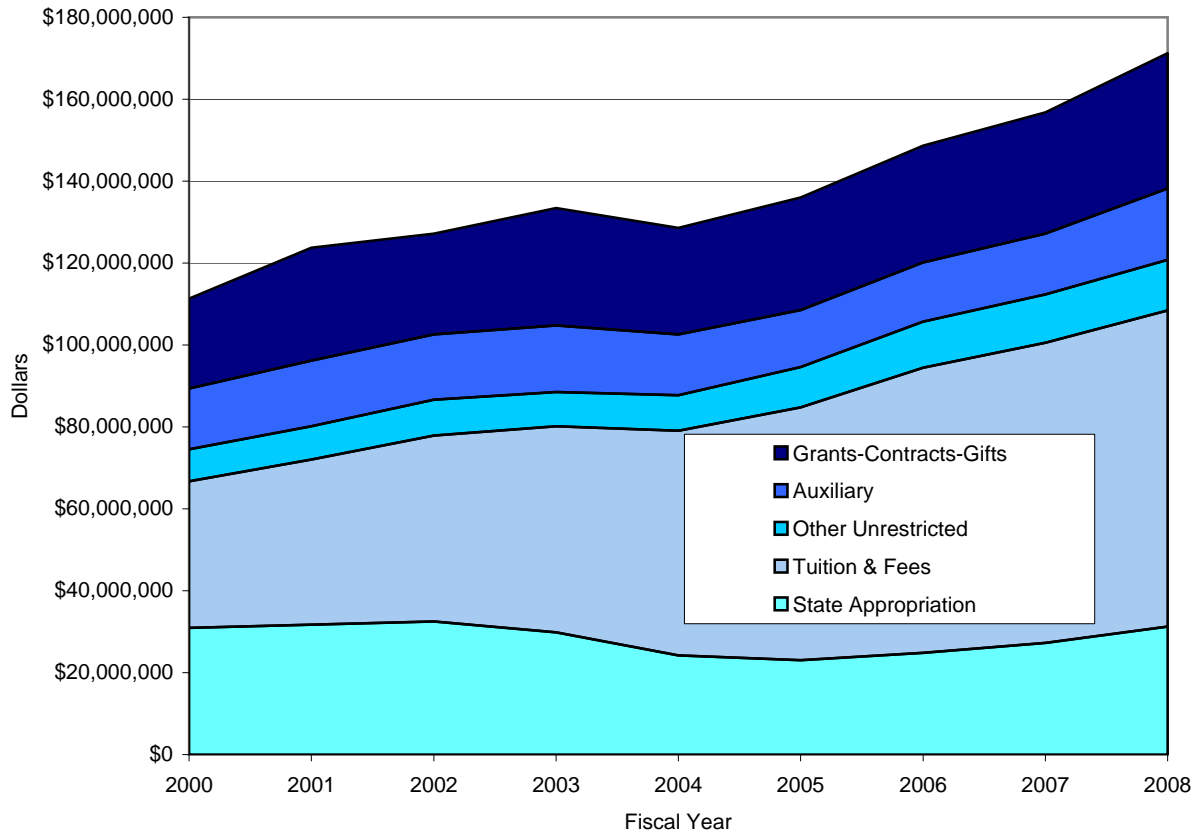
* Figure for Academic and Student Affairs now includes the former International Training, Education and Research Aca now two separate components (National Learning Center and the Latino/a Research and Policy Center), both reporting

Downtown Campus FY 2006-2007 Actual Expenditures Total \$156,548,233



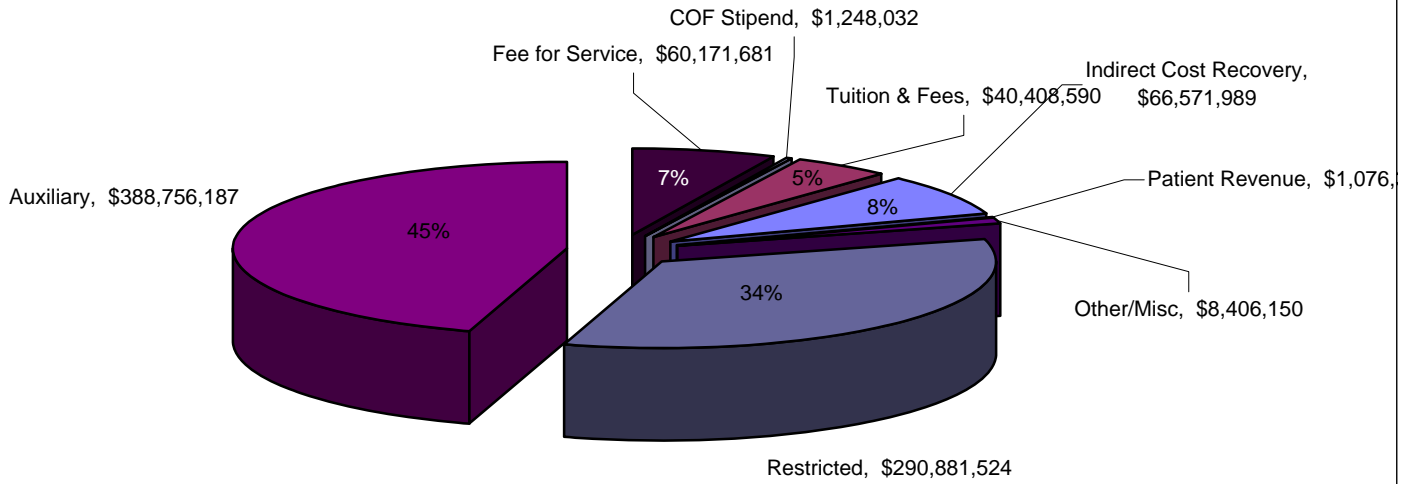
Source: UCD Budget Office

Downtown Campus Sources of Revenue



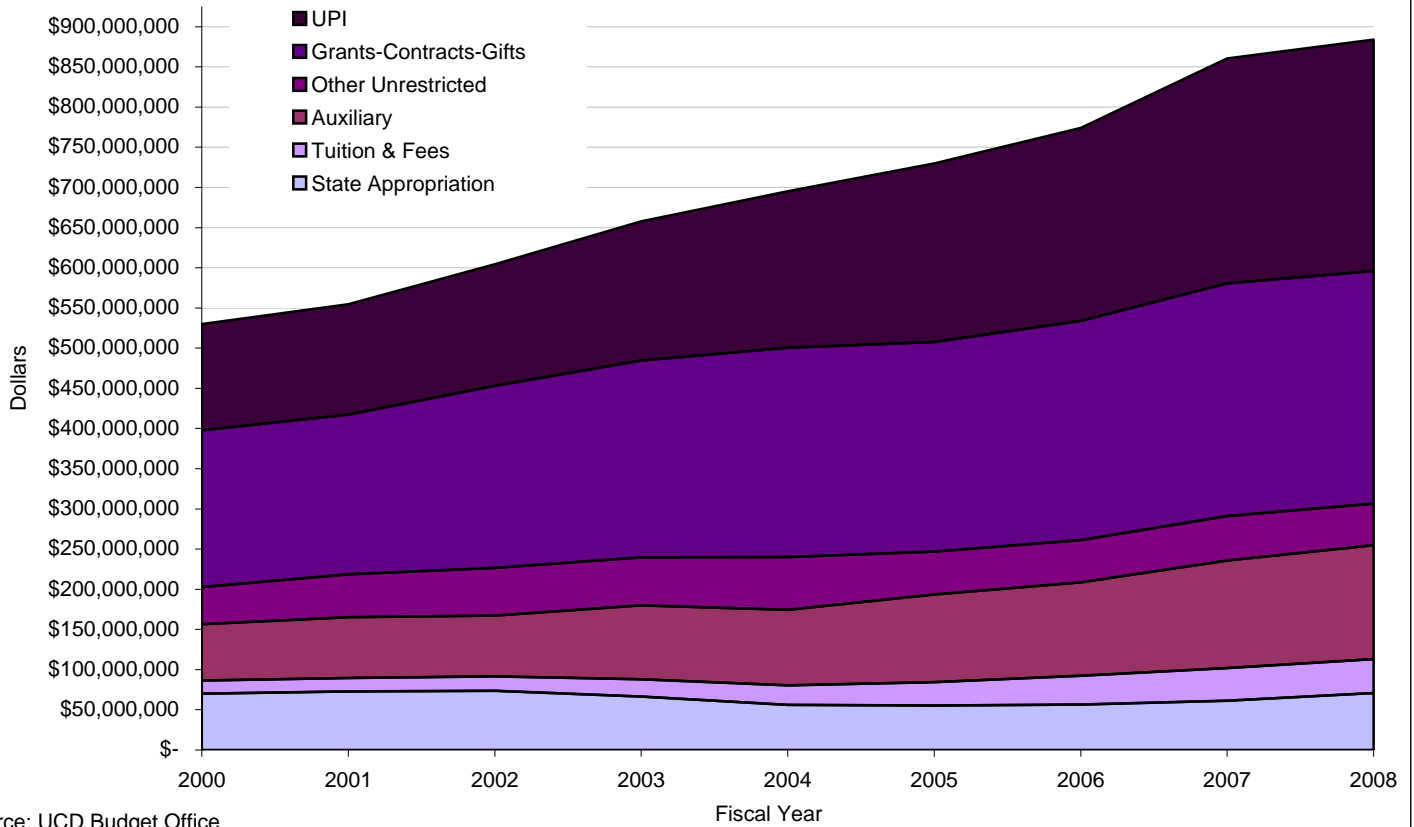
Anschutz Medical Campus FY 2006-2007 Actual Expenditures

Total \$857,520,471



Source: UCD Budget Office
 1 Auxiliary amounts include UPI on

AMC Sources of Revenue



Source: UCD Budget Office

Anschutz Medical Campus Top 20 Sponsored Program Awards FY 2006-2007

Principal Investigator	Title	Sponsor	Total
Richard Krugman	General Clinical Research Clinic	National Center for Research Resources (DHHS)	\$ 7,246,894
Spero Manson	Coordinating Center of HIS/NDP Competitive Grant Program	Department of Health and Human Services (DHHS)	\$ 5,913,529
George Eisenbarth	Benaroya Research Institute/UCDHSC Autoimmune Cooperative Study Group	National Institute of Allergy and Infectious Diseases (DHHS)	\$ 3,707,647
Richard Krugman	Pediatric General Clinical Research Center	National Center for Research Resources (DHHS)	\$ 3,652,468
Paul Bunn	Cancer Center Support Grant	National Cancer Institute (DHHS)	\$ 3,582,046
Tim E. Byers	Colorado Statewide Colorectal Screening Program	Colorado Department of Public Health and Environment	\$ 2,999,868
John T. Brewster	Signal Treatment Contract	Signal Behavioral Health Network	\$ 2,566,921
Robert Garcea	Novel Therapeutic Vaccines for Accute and Persistent Papillomavirus Infections	Gates Foundation	\$ 2,557,608
Kurt Steinmark	Lung Vascular Disease in Infants and Children: Mechanisms and Treatment	National Heart Lung and Blood Institute (DHHS)	\$ 2,311,542
Kurt Steinmark	Adaptations to Hypoxia	National Heart Lung and Blood Institute (DHHS)	\$ 2,284,489
David Crawford	National Lung Screening Trial (NLST)	National Cancer Institute (DHHS)	\$ 2,192,455
Alfred Marcus	CIS Research Consortium (CIRSC): Years 2006-2011	National Cancer Institute (DHHS)	\$ 2,148,228
Paul Bunn	Spore in Lung Cancer	National Cancer Institute (DHHS)	\$ 2,136,998
Frederick Hetzel	Photodynamic Therapy: Basic Science Studies	National Cancer Institute (DHHS)	\$ 2,118,239
Elizabeth Connick	Immunopathogenesis of Acute HIV-1 Infection	National Institute of Allergy and Infectious Diseases (DHHS)	\$ 2,087,864
Lucy Bradley-Springer	AIDS Education and Training Center	Health Resources and Services Administration (DHHS)	\$ 1,969,557
John T. Brewster	Denver County Community Corrections Contract for Haven and Peer 1	City and County of Denver	\$ 1,952,206
Andy Kramer	Quality Indicator Survey (QIS) Training and Analysis	Centers for Medicare and Medicaid Services (DHHS)	\$ 1,899,040
Anirban Banerjee	Trauma Primes Cells	National Institute of General Medical Sciences (DHHS)	\$ 1,865,584
Robert Freedman	Molecular Neurobiology of Schizophrenia	National Institute of Mental Health (DHHS)	\$ 1,855,719

Source: Sponsored Program and Other Restricted Fund Activity Annual Report 2006-2007