

INSTITUTIONAL FACTS AND CHARACTERISTICS

University of Colorado at Denver and Health Sciences Center

**Office of Institutional Research, Planning and Analysis
Fall 2005**

TABLE OF CONTENTS

SECTION I. GENERAL INFORMATION

Role and Mission Statement	1
Definitions of Terms and Abbreviations	3
History and Summary of Facts	4

SECTION II. STUDENT DATA

Headcount Enrollments by School and College - Fall Semesters	1
Headcount Enrollments by Gender, Undergraduate/Graduate and Full-time/Part-time - Fall Semesters	2
Enrollments by Class and Gender - Fall Semesters	3
Distribution of Headcount Students by Class, Major and Ethnic Category - Fall 2005	5
Comparison of Headcount to Term FTE Students - Fall 2000 through Fall 2005	6
Enrollments by Major - Fall 2005	7
Enrollments by Major - Undergraduate History Fall 2001-Fall 2005	11
Enrollments by Major - Graduate History Fall 2001-Fall 2005	13
Enrollments by Major - First Professional History Fall 2001-Fall 2005	16
Ethnic Distribution of Headcount Students - Fall Semesters	17
Age Distribution - Fall 2005	18
Distribution of Student Headcount by County - Fall 2005	19
Student Headcount by Metro Denver County - Fall 2005	20
Average Student Credit Hour Load by Level - Fall Semesters	21
Undergraduate Applicants by Academic Unit - Fall 2004 and Fall 2005	22
FY FTE Students by School/College and Subject Area - 2000-01 through 2004-05	23
FY FTE Students by Level of Instruction	24
FY FTE Students by School/College and Level of Instruction	25
FTE Students by School/College, Department and Level of Instruction - FY 2004-05	26

SECTION III. ALUMNI DATA

Alumni by Year of Graduation	1
Alumni by Geographic Location	2
Alumni by Degrees - Cumulative 1975-76 through 2004-05	3

SECTION IV. DEGREE DATA

Degrees Offered by School/College & Program (CCHE Approved Degree Programs) - 2004-05	1
Degrees Conferred - 1975-96 through 2004-05	2
Degrees Conferred by Gender - 2004-05	3
Degrees Conferred by Ethnicity & Undergraduate/Graduate Status - 2004-05	5
Degrees Conferred by School/College - 2000-01 through 2004-05	7

TABLE OF CONTENTS
(Continued)

SECTION V. FACULTY DATA

Full-time Instructional Faculty Distribution by Gender and Highest Degree Awarded	1
Full-time Instructional Faculty Distribution by Tenure Status, Rank and Ethnicity	2
Full-time Instructional Faculty Distribution by Age - Downtown Denver Campus	3
Full-time Instructional Faculty Distribution by Age - Health Sciences Campus	4
Percent Full-time Faculty - 2000-01 through 2004-05	5
FTE Instructional Faculty - 2000-01 through 2004-05	6
Student/Faculty Ratios by School/College and Department - 2000-01 through 2004-05	7
Student Credit Hours/FTE Faculty by School/College - 2000-01 through 2004-05	8

SECTION VI. FINANCIAL DATA

Financial Aid Awards - 2003-04 and 2004-05	1
Revenue and Expenditures State Appropriations - Fiscal Year 2004-05	4
Revenue FY 2003-04 and Expenditures FY 2004-05	5
Contracts and Grants by Funding Source - Fiscal Year 2004-05	6
Total Contracts and Grants Awarded - Fiscal Years 2000-01 through 2004-05	7
Contract and Grant Proposals Submitted, Awards Received, Indirect Costs Collected - FY 2004-05	8
FY 2006 Budget and Revenue Sources - Downtown Denver Campus	9
FY 2006 Budget and Revenue Sources - Health Sciences Campus	10
Health Sciences Programs Top 20 Sponsored Program Awards	11

Section I.
General Information

UNIVERSITY OF COLORADO AT DENVER AND HEALTH SCIENCES CENTER STATEMENT OF PURPOSES

The University of Colorado at Denver and Health Sciences Center is a new university composed of three University of Colorado campuses – Downtown Denver, Ninth and Colorado, and Fitzsimons at Aurora. The University of Colorado Board of Regents created the new university on July 1, 2004, with the consolidation of the University of Colorado at Denver and the University of Colorado Health Sciences Center. The new university's mission spans the scopes of its parts and its vision is to:

- Become the premier urban research university with nationally ranked programs of teaching, clinical care and community service throughout Colorado.
- Provide access to higher education for undergraduate, graduate, and professional students with increased multicultural diversity through recruitment and pipeline initiatives.
- Offer new interdisciplinary programs of education and research in the life sciences, professional programs and liberal arts.
- Become a more entrepreneurial university with two campuses in the Denver/Aurora metropolitan area and the state.
- Develop regional business and community partnerships that stimulate new programs and an improved economy.

In addition to the material present in this report, readers are invited to visit the campus web page at <http://www.ucdhsc.edu/> and the consolidation web site at <http://www.cusys.edu/consolidation>.

DOWNTOWN DENVER STATEMENT OF PURPOSES

- Provide students with learning opportunities that will enhance the quality of their lives, that will make them well-educated citizens, that will lead to rewarding careers, and that will provide Denver and Colorado with a workforce able to compete in the global economy;
- Develop research, scholarship and creative work that will advance the base of knowledge in our disciplines and that will contribute to the vitality of our culture and/or economy;
- Apply the university's skills and knowledge to real problems in the Denver metro area;
- Build and maintain an institutional culture of plurality, collegiality, integration and customer service.

Source:

NCA Institutional Self – Study

MISSION, ROLE AND SCOPE STATEMENT

(SB 03-304 signed by Governor Owens June, 2003)

The Denver campus of the University of Colorado shall be an urban comprehensive undergraduate and graduate research university with selective admission standards. The Denver campus shall offer baccalaureate, masters, and a limited number of doctoral degree programs, emphasizing those that serve the needs of the Denver metropolitan area. The Denver campus has statewide authority to offer graduate programs in Public Administration and exclusive authority in Architecture and Planning.

HEALTH SCIENCES CENTER

Mission Statement

The mission statement of the Health Sciences Center (HSC) reflects the main purposes of the institution:

- the education of health professionals;
- the delivery of both health care and community service; and
- the advancement of knowledge through research in the health sciences.

Legislative Mission

The legislative mission for the HSC is mandated by the Constitution of Colorado. The Colorado Revised Statutes (C.R.S. 23-20-101) state that the HSC campus' role is to "be a specialized professional institution offering baccalaureate and graduate programs in health-related disciplines". This mission statement was created during the early history of the institution and, although reviewed by the state legislature and the Board of Regents, has not changed since that time.

DEFINITION OF TERMS AND ABBREVIATIONS

Some of the tables and graphs included in this document use abbreviations or terms which may be unfamiliar. Following is a list of the most commonly used terms and related definitions.

FTE Student (FTES) - full-time equivalent student, calculated by dividing student credit hours by 30.

Fiscal Year FTES - includes summer, fall, and spring student credit hours divided by 30.

Term FTES - full-time equivalent student for a single semester, calculated by dividing student credit hours by 15.

Headcount Students - the number of individual students enrolled for a semester.

SCH - Student credit hours, derived by multiplying the number of students enrolled in a course by the course credit (e.g., 3.0 credit hours x 30 students = 90 SCH).

FTEF - Full-time equivalent faculty.

SFR - Student faculty ratio (FTES divided by FTEF).

NRA - Non-resident alien.

First Professional – Programs offering degrees in dentistry (DDS), physical therapy (DPT), medicine (MD), nursing (ND/DNP), or pharmacy (PharmD)

UNIVERSITY OF COLORADO AT DENVER & HEALTH SCIENCES CENTER HISTORY AND SUMMARY OF FACTS

History

- 1883 The Medical Department of the University of Colorado opened with two students and two senior faculty members.
- 1898 The School of Nursing was established.
- 1912 University of Colorado organizes Department of Correspondence and Extension in Denver; courses first offered.
- 1913 The School of Pharmacy became an independent school after it had been a department in the School of Medicine for two years.
- 1923 Regents of University of Colorado adopt policy to accept up to 90 hours of credit work earned in the Extension Division.
- 1925 The new medical center at Ninth Avenue near Colorado Blvd. was formally dedicated.
- 1953 Appointment of a Dean of the Extension Division.
- 1956 Regents purchase Tramway Building to house Extension Division.
- 1964 Regents change name of Denver Extension Center to the University of Colorado - Denver Center and place the administration of programs under the Vice President for Academic Affairs and Dean of Faculties.
- 1965 The Medical Center had been greatly expanded to 47 acres including a new Colorado General Hospital and modern quarters for the Medical and Nursing Schools.
- 1972 Constitutional amendment allowing the University of Colorado to maintain and develop branches and to rename the Denver Center the University of Colorado at Denver.
- 1973 The School of Dentistry enrolled its first class.
- 1974 House Bill 1163 Statutory Recognition for Auraria.
Reorganization of the University of Colorado into a four-campus system.
- 1992 School of Pharmacy moved to Health Sciences Center from the Boulder campus.
- 1995 The federal government conveyed 217 acres of the Fitzsimons site in Aurora, Colorado, to the University of Colorado to build a 21st century health sciences center from the ground up. The first phase of transition from the current campus at Ninth Avenue and Colorado Boulevard in Denver to the Fitzsimons will be completed in 2010.
- 2000 The Anschutz Outpatient Pavilion, the Anschutz Cancer Pavilion, and the Building 500 renovation for support space were finished.
- 2001 The Preservation and Access Service Center for Colorado Academic Libraries – Library archive facility, the Rocky Mountain Lions Eye Institute, and the Perinatal Research Center Expansion were completed.
- 2002 The Nighthorse Campbell Native Health Building was dedicated.
- 2004 The Anschutz Inpatient Pavilion opened. The Research Complex I was completed. Included in the Research Complex I facilities are wet and dry research laboratories, core laboratories, lab support space (including space for linear equipment), researcher and program offices, conference rooms, a central vivarium, auditoria, and building support space.

- 2004 The University of Colorado at Denver and the University of Colorado Health Sciences Center joined into a single major urban research university. The consolidated institution boasts some 27,070 students and more than 100 degree programs. The new entity operates on a budget of \$866 million and attracts more than \$300 million a year in research grants and contracts. Consequently, renamed as the University of Colorado at Denver and Health Sciences Center.
- 2005 The Barbara Davis Center for Childhood Diabetes, the largest diabetes and endocrine care research and training program in Colorado, transitioned into a new facility at Fitzsimons.

Schools and Colleges

- College of Architecture and Planning
- College of Arts and Media
- Business School
- School of Dentistry
- School of Education and Human Development
- College of Engineering and Applied Science
- College of Liberal Arts and Sciences
- School of Medicine
- School of Nursing
- School of Pharmacy
- Graduate School
- Graduate School of Public Affairs

Affiliated Hospitals

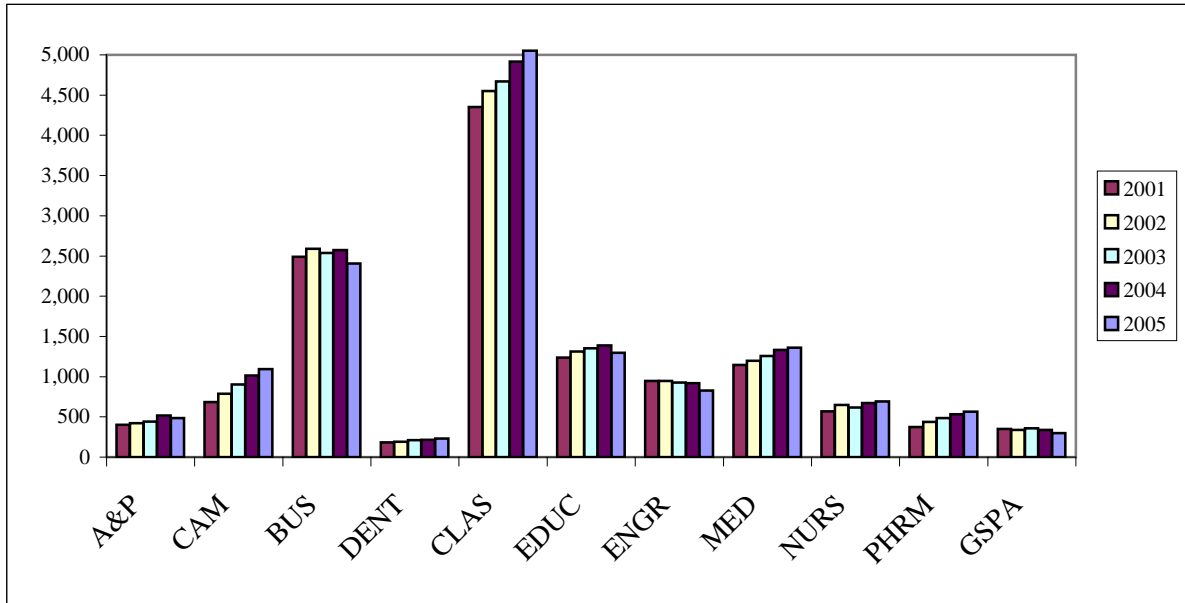
- University of Colorado Hospital
- The Children’s Hospital of Denver
- Veterans Affairs Medical Center
- National Jewish Medical and Research Center
- Denver Health Medical Center

Degree Programs Offered

	DDC	HSC
Undergraduate	28	3
Graduate		
Master's	44	9
Doctorate	8	12
Ed.S.	2	
First Professional		5
TOTAL	82	29

Section II.
Student Data

**HEADCOUNT ENROLLMENTS BY SCHOOL AND COLLEGE
FALL SEMESTERS**



	<u>2001</u>	<u>2002</u>	<u>2003</u>	<u>2004</u>	<u>2005</u>
Architecture & Planning ¹	400	421	441	517	485
Arts & Media ²	683	786	902	1,016	1,095
Business	2,490	2,590	2,536	2,572	2,407
Dentistry	182	191	209	216	230
Liberal Arts & Sciences	4,353	4,550	4,668	4,918	5,053
Education	1,236	1,311	1,354	1,389	1,295
Engineering	948	948	927	920	827
Medicine	1,144	1,199	1,255	1,332	1,361
Nursing	568	647	618	672	692
Pharmacy	373	439	485	535	563
Public Affairs	352	337	359	340	297
Other Units	4	4	0	0	0
Non-Degree	815	880	783	644	592
TOTAL UCDHSC	13,548	14,303	14,537	15,071	14,897

Notes:

1. Architecture & Planning does not include students from the undergraduate Environmental Design program taught in Boulder.
2. Arts, Fine Arts, Music and Theatre were transferred into Arts & Media FY 1997-98.
3. Data are end-of-term figures.

Source:

Enrollment Reports
Office of Institutional Research, Planning & Analysis

**HEADCOUNT ENROLLMENTS BY GENDER,
UNDERGRADUATE/GRADUATE/FIRST PROFESSIONAL AND FULL-TIME/PART-TIME
STATUS
FALL SEMESTERS**

FALL SEMESTER	TOTAL STUDENT ENROLLMENT	GENDER		LEVEL			STATUS	
		FEMALE	MALE	UNDER-GRAD	GRAD	1st Professional	FULL-TIME	PART-TIME
2001	13,548	7,789	5,759	6,733	5,690	1,125	7,687	5,861
2002	14,303	8,166	6,137	7,006	6,102	1,195	8,330	5,973
2003	14,537	8,325	6,212	7,155	6,133	1,249	8,662	5,875
2004	15,071	8,595	6,476	7,610	6,059	1,402	9,306	5,765
2005	14,897	8,546	6,351	7,868	5,618	1,411	9,381	5,516

Notes:

Data are end-of-term figures.

Source:

Enrollment Reports
Office of Institutional Research, Planning & Analysis

ENROLLMENTS BY CLASS AND GENDER					
FALL SEMESTERS					
	2001	2002	2003	2004	2005
FRESHMEN	1,263	1,360	1,397	1,525	1,541
Male	542	591	621	697	710
Female	721	769	776	828	831
SOPHOMORES	1,370	1,360	1,480	1,565	1,544
Male	600	643	681	698	686
Female	770	717	799	867	858
JUNIORS	1,674	1,788	1,723	1,891	2,022
Male	685	769	763	831	830
Female	989	1,019	960	1,060	1,192
SENIORS & 5TH YEAR	2,271	2,354	2,446	2,518	2,589
Male	1,034	1,056	1,089	1,162	1,214
Female	1,237	1,298	1,357	1,356	1,375
POST- BACCALAUREATE CERTIFICATE					62
Male					20
Female					42
NON-DEGREE	155	144	109	111	110
Male	79	70	60	51	56
Female	76	74	49	60	54
UNDERGRADUATE					
TOTALS	6,733	7,006	7,155	7,610	7,868
Male	2,940	3,129	3,214	3,439	3,516
Female	3,793	3,877	3,941	4,171	4,352
CERTIFICATE	55	39	44	40	36
Male	5	6	7	5	5
Female	50	33	37	35	31
MASTERS	4,322	4,631	4,658	4,741	4,321
Male	1,823	1,925	1,890	1,920	1,705
Female	2,499	2,706	2,768	2,821	2,616
DOCTORATE	547	576	616	642	656
Male	214	232	240	270	279
Female	333	344	376	372	377
NON-DEGREE	766	856	815	636	605
Male	320	351	336	289	265
Female	446	505	479	347	340
GRADUATE					
TOTALS	5,690	6,102	6,133	6,059	5,618
Male	2,362	2,514	2,473	2,484	2,254
Female	3,328	3,588	3,660	3,575	3,364

ENROLLMENTS BY CLASS AND GENDER FALL SEMESTERS					
	2001	2002	2003	2004	2005
DDS	143	152	164	170	182
Male	87	94	99	101	107
Female	56	58	65	69	75
DNP					7
Male					2
Female					5
DPT				65	91
Male				10	15
Female				55	76
MD	546	534	526	555	566
Male	272	275	279	288	292
Female	274	259	247	267	274
ND	105	115	116	127	50
Male	11	8	13	11	3
Female	94	107	103	116	47
PharmD	331	394	443	485	515
Male	87	117	134	143	162
Female	244	277	309	342	353
FIRST PROFESSIONAL TOTALS	1,125	1,195	1,249	1,402	1,411
Male	457	494	525	553	581
Female	668	701	724	849	830
STUDENT TOTALS	13,548	14,303	14,537	15,071	14,897
Male	5,759	6,137	6,212	6,476	6,351
Female	7,789	8,166	8,325	8,595	8,546

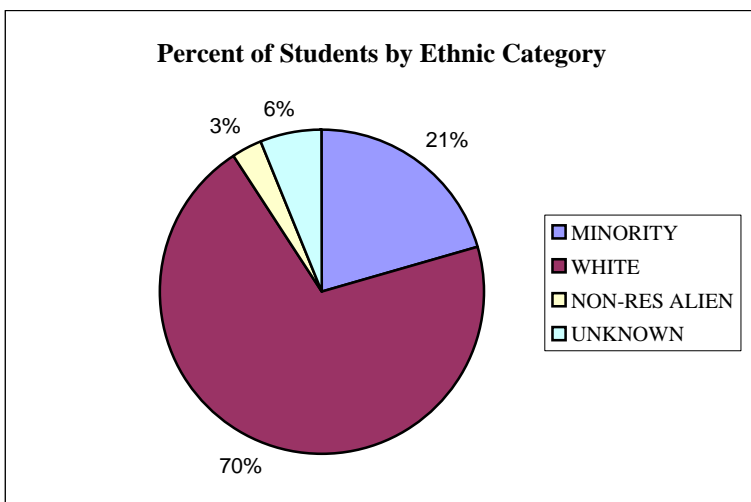
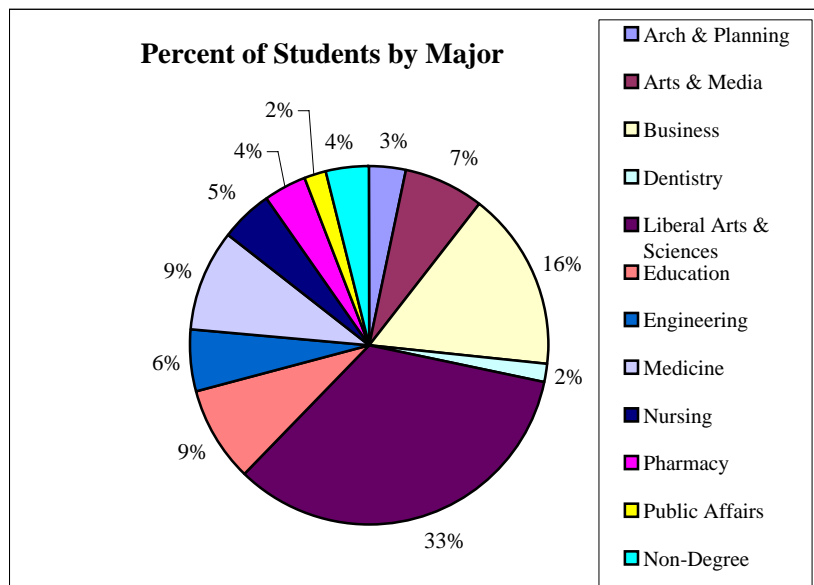
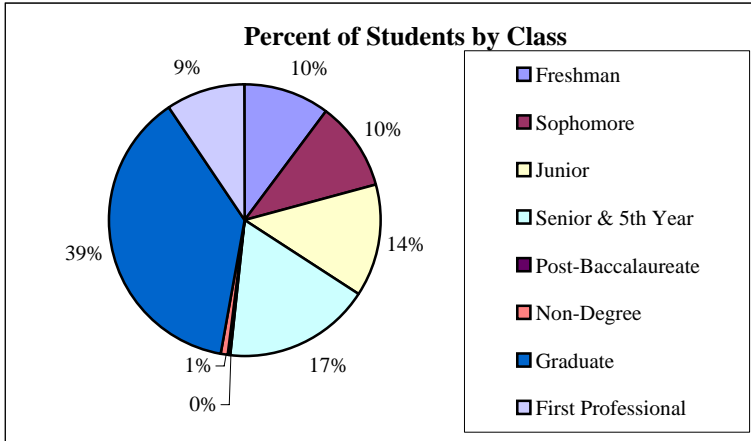
Notes:

Data are end-of-term figures for all DDC programs and for the 2004 and 2005 HSC programs. All other HSC program figures are census.

Source:

Enrollment Reports
Office of Institutional Research, Planning & Analysis

DISTRIBUTION OF HEADCOUNT STUDENTS FALL 2005



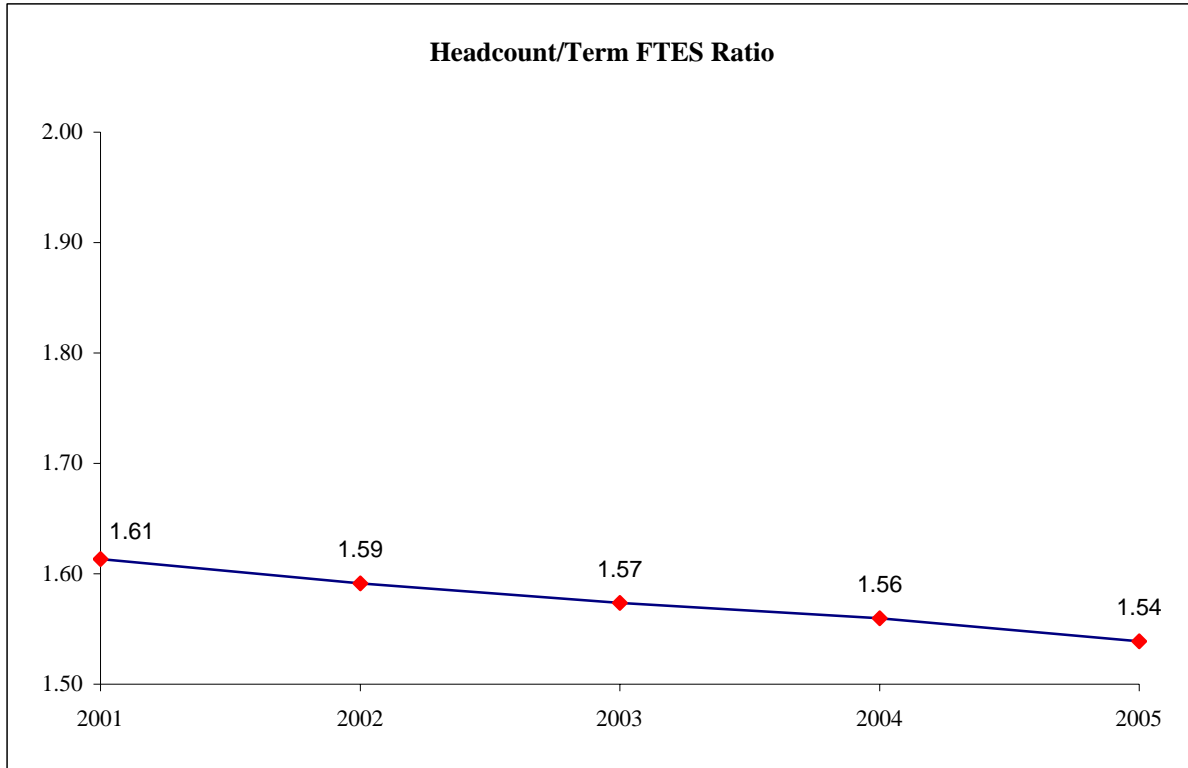
Notes:

1. Architecture & Planning does not include students from the undergraduate Environmental Design
2. Arts, Fine Arts, Music and Theatre were transferred into Arts & Media FY 1997-98.
3. Data are end-of-term figures.

Source:

Enrollment Reports
Office of Institutional Research, Planning & Analysis

**COMPARISON OF HEADCOUNT TO TERM FTE STUDENTS
FALL 2001 THROUGH FALL 2005
DOWNTOWN DENVER CAMPUS**



<u>FALL SEMESTER</u>	<u>HEADCOUNT</u>	<u>TERM FTES</u>	<u>HEADCOUNT/TERM FTES RATIO</u>
2001	11,281	6991.97	1.61
2002	11,827	7431.63	1.59
2003	11,970	7606.77	1.57
2004	12,316	7895.93	1.56
2005	12,051	7830.6	1.54

Notes:

1. Data are end-of-term figures.
2. Headcount to FTE student ratio indicates the number of headcount students it takes to equal one full-time equivalent student at the University.

Source:

Enrollment Reports
Office of Institutional Research, Planning & Analysis

**ENROLLMENTS BY MAJOR
FALL 2005**

<u>MAJOR CODE</u>		<u>UNDER- GRAD</u>	<u>GRAD</u>	<u>FIRST PROFESSIO NAL</u>	<u>TOTAL</u>
COLLEGE OF ARCHITECTURE AND PLANNING			485		485
ARCH	Architecture		257		257
ARUR	Architecture in Urban Design		9		9
DSPL	Design and Planning		31		31
LAND	Landscape Architecture		80		80
URRP	Urban and Regional Planning		108		108
COLLEGE OF ARTS AND MEDIA		1,078	17		1,095
AVFT	Film and Video Studies	29			29
CRAR	Fine Arts - BFA Program	239			239
FINE	Fine Arts - BA Program	76			76
MUIS	Music Industry Studies	121			121
MUSC	Music	388			388
RAMS	Recording Arts		17		17
THFT	Theatre, Film and Television - BFA Program	129			129
THTE	Theatre, Film and Television - BA Program	14			14
THTR	Theatre	19			19
AMUD	Undetermined	63			63
SCHOOL OF DENTISTRY		48		182	230
	Dental Hygiene	48			48
	Dental Students			182	182
COLLEGE OF BUSINESS		1,320	1,087		2,407
ACCT	Accounting	237	116		353
AMBA	Business Administration-One Year Program				0
BGEN	General Business	3			3
FNCE	Finance	228	96		324
HLAD	Health Administration		7		7
INBU	International Business	142	40		182
INFS	Information Systems	75	82		157
MBAC	Master of Business Administration - Cohort Program		11		11
MBAD	Master of Business Administration		596		596
MBAH	Master of Business Administration Health		62		62
MBAO	Master of Business Administration - Other				0
MGMT	Management	250			250
MKTG	Marketing	227	41		268
ORMG	Organization Management		23		23
PHIS	Computer Science and Information Systems		13		13
PHRM	Human Resources Management	24			24
BUUD	Undetermined	134			134
COLLEGE OF ENGINEERING AND APPLIED SCIENCE		494	333		827
CMSC	Computer Science		134		134
CSCI	Computer Science & Engineering	94			94
CVEN	Civil Engineering	113	98		211
EEEN	Electrical Engineering	139	39		178
MAEG	Engineering		31		31
MCEN	Mechanical Engineering	123	21		144
PHCS	Computer Science and Information Systems		10		10
ENUD	Undetermined	25			25
SCHOOL OF EDUCATION AND HUMAN DEVELOPMENT		62	1,233		1,295
ALIB	Information/Learning Technology - Alternative School Librarian		1		1
ALPE	Administration Leadership and Professional Studies		57		57
ALPS	Administration Leadership and Professional Studies		80		80
CACR	Counseling Psychology and Counselor Education Agency CAR		3		3
CAEP	Counseling Psychology and Counselor Education Agency EAP		1		1
CAIN	Counseling Psychology and Counselor Education - INT		11		11
CAML	Counseling Psychology and Counselor Education Agency MUL		4		4
CCFC	Counseling Psychology and Counselor Education - Family		32		32
CIAP	Curriculum and Instruction		1		1
CIED	Curriculum and Instruction		123		123
CIEN	Curriculum and Instruction - English (Secondary)		5		5
CILT	Certificate: Inst Design and Adult Learning		2		2

<u>MAJOR CODE</u>		<u>UNDER- GRAD</u>	<u>GRAD</u>	<u>FIRST PROFESSIO NAL</u>	<u>TOTAL</u>
	(continued)				
CIMA	Curriculum and Instruction - Mathematics (Elem. & Secondary)		14		14
CIMH	Curriculum and Instruction - Mental Health (Elem. & Secondary)		8		8
CISC	Curriculum and Instruction - Science (Elem. & Secondary)		8		8
CISS	Curriculum and Instruction - Social Studies (Secondary)		3		3
CITE	Curriculum and Instruction - Technology (Elem. & Secondary)		2		2
CPCE	Counseling Psychology and Counselor Education		96		96
CPEL	Curriculum and Instruction - Elementary		7		7
CPMA	Curriculum and Instruction - Mathematics		5		5
CPSI	Curriculum and Instruction - Science		3		3
CPSO	Curriculum and Instruction - Social Studies		5		5
CSCH	Counseling Psychology and Counselor Education - School		18		18
DEGL	Curriculum and Instruction - Secondary English Dual Lic.		1		1
DELE	Curriculum and Instruction - Elementary Educ Dual Lic.		15		15
DSCI	Curriculum and Instruction - Science (General Special Education)		1		1
DSOC	Curriculum and Instruction - Social Studies (Special Education)		2		2
EBIL	Curriculum and Instruction - Belm/Bilingual/ESL		12		12
ECAP	Early Childhood Education - Access		10		10
ECED	Early Childhood Education		41		41
ECSE	Early Childhood Special Education		39		39
EDLI	Educational Leadership and Innovation		81		81
EECE	Endorsement: Early Childhood Special Education		4		4
ELEM	Elementary Education		71		71
ELIB	Endorsement - Library Media		1		1
EPSA	Education Psychology - Access (Elem. & Secondary)		6		6
EPSC	Endorsement - School Counselor		4		4
EPSG	Education Psychology - Gro/Dev/Lrn (Elem. & Secondary)		8		8
EPSY	Educational Psychology		50		50
ERDG	Curriculum and Instruction - Elementary Literacy		15		15
ESLA	Curriculum and Instruction - ESL Adult		5		5
ESLE	Curriculum and Instruction - Bilingual/ESL Elementary		22		22
ESLS	Curriculum and Instruction - Bilingual/ESL Secondary		3		3
ESPD	Endorsement - Special Education		5		5
ETLD	Endorsement - Teacher Linqst DVRSE		5		5
ILTA	Information and Learning Technologies Inst DSG/Adult LRN		9		9
ILTK	Information and Learning Technologies - K-12		25		25
INLT	Information and Learning Technologies		50		50
LBIO	Licensure: Science Biology	3			3
LEGL	Licensure: English	14			14
LELE	Licensure: Elementary	35			35
LERT	Licensure: Science Earth	1			1
LFLF	Licensure: French	1			1
LMTH	Licensure: Mathematics	1			1
LPRI	Licensure: School Principal		1		1
LSCI	Licensure: Science General	3			3
LSOC	Licensure: Social Studies	4			4
LSPY	Licensure: School Psychology		7		7
RALL	Curriculum and Instruction - Reading/Writing K-12		3		3
RELM	Curriculum and Instruction - Reading/Writing K-6		35		35
REND	Endorsement: Reading Teacher		3		3
RENG	Curriculum and Instruction - English Education		5		5
RSEC	Curriculum and Instruction - Reading/Writing 7-12		15		15
SBIL	Curriculum and Instruction - Secondary Bilingual/ESL		5		5
SBIO	Curriculum and Instruction - Science - Biology		5		5
SEGL	Curriculum and Instruction - English		14		14
SERT	Curriculum and Instruction - Science - Earth		1		1
SFLS	Curriculum and Instruction - Foreign Language - Spanish		3		3
SLIB	Information and Learning Technologies - School Librarian		3		3
SMTH	Curriculum and Instruction - Mathematics		7		7
SPDG	Special Education Generalist		20		20
SPD1	Special Education - Teacher 1		16		16
SPD2	Special Education - Teacher 2		8		8
SPED	Special Education		11		11
SPSY	School Psychology		61		61
SRDG	Curriculum and Instruction - Secondary Literacy		2		2
SSCI	Curriculum and Instruction - Science - General		5		5
SSOC	Curriculum and Instruction - Social Studies		12		12
TECE	Teacher Certification		4		4
TLIB	Information and Learning Technologies - Teacher Librarian		13		13

<u>MAJOR CODE</u>		<u>UNDER- GRAD</u>	<u>GRAD</u>	<u>FIRST PROFESSIO NAL</u>	<u>TOTAL</u>
		(continued)			
COLLEGE OF LIBERAL ARTS AND SCIENCES		4,385	668		5,053
AMEN	Applied Mathematics		74		74
ANTH	Anthropology	60	33		93
BIOL	Biology	691	32		723
CHEM	Chemistry	124	19		143
COMM	Communication	314	16		330
ECON	Economics	99	38		137
ENGL	English	180	79		259
EVSC	Environmental Sciences		33		33
EWRT	English Writing	133			133
FREN	French	19			19
GEOG	Geography	69			69
GEOL	Geology	4			4
GRMN	German	1			1
HBSC	Health and Behavioral Sciences		30		30
HIST	History	145	60		205
HUMN	Humanities		53		53
INST	Individually Structured	125			125
INTS	International Studies	32			32
ISCI	Integrated Sciences		14		14
MATH	Mathematics	83			83
PHIL	Philosophy	56			56
PHYS	Physics	42			42
PRBU	Pre-Business	296			296
PRCH	Pre-Child Health Associate	5			5
PRCO	Pre-Communication	15			15
PRDE	Pre-Dentistry	25			25
PRDH	Pre-Dental Hygiene	14			14
PREN	Pre-Engineering	189			189
PRJR	Pre-Journalism	11			11
PRMD	Pre-Medicine	116			116
PRMT	Pre-Medical Technology	2			2
PRNU	Pre-Nursing	128			128
PRPH	Pre-Pharmacy	60			60
PRPT	Pre-Physical Therapy	20			20
PRVT	Pre-Veterinary Medicine	7			7
PSCI	Political Science	270	38		308
PSYC	Psychology	398	23		421
PSYS	Psychology - BS	121			121
SOCI	Sociology	162	45		207
SOCS	Social Science		57		57
SPAN	Spanish	35	10		45
TECH	Technical Communication		14		14
LAUD	Undetermined	334			334
SCHOOL OF MEDICINE			704	657	1,361
	Basic Sciences		311		311
	Biometrics, BMSC		14		14
	Child Health Associate/Physician Assistant (MS)		114		114
	Clinical Science		3		3
	DPT Students			91	91
	Genetics Counseling		14		14
	Medical Students			566	566
	Nondegree - Certificate Public Health		29		29
	Nondegree - Graduate Basic Sciences		51		51
	Nondegree - Graduate Public Health		19		19
	Nondegree -Certificate Clinical Sciences		18		18
	Physician Assistant Students (MPAS)		40		40
	Public Health		91		91
SCHOOL OF NURSING		374	261	57	692
	Baccalaureate Nursing	341			341
	Doctor of Nursing Practice			7	7
	MS Nursing		173		173
	MS Nursing, DNP Track		45		45
	Nondegree RN to MS	3			3
	Nursing Doctorate			50	50
	PhD Nursing		43		43
	RN to BS	30			30

<u>MAJOR CODE</u>		<u>UNDER- GRAD</u>	<u>GRAD</u>	<u>FIRST PROFESSIO NAL</u>	<u>TOTAL</u>
(continued)					
SCHOOL OF PHARMACY			48	515	563
	Nondegree students		3		3
	Pharm.D			515	515
	Pharmaceutical Sciences		23		23
	Toxicology		22		22
GRADUATE SCHOOL OF PUBLIC AFFAIRS			297		297
AMPA	Public Administration - Accelerated		1		1
CRJU	Criminal Justice		39		39
EXPA	Public Administration - Executive		21		21
PADM	Public Administration		186		186
PAWS	Public Administration - Western Slope		10		10
PAFF	Public Affairs		40		40
OTHER		107	485		592
	Other Units				0
	Non-Degree	107	485		592
FALL 2005 TOTALS		7,868	5,618	1,411	14,897

Notes:

Data are end-of-term figures for all DDC programs and for the 2004 and 2005 HSC programs. All other HSC program figures are census.

Source:

Office of Institutional Research, Planning & Analysis

**ENROLLMENTS BY MAJOR HISTORY - UNDERGRADUATES
FALL 2001-FALL 2005**

MAJOR CODE		Fall 2001	Fall 2002	Fall 2003	Fall 2004	Fall 2005
COLLEGE OF ARTS AND MEDIA		683	786	895	1,005	1,078
AVFT	Film and Video Studies		15	50	1	29
CRAR	Fine Arts - BFA Program	170	228	234	256	239
FINE	Fine Arts - BA Program	105	63	71	75	76
MUIS	Music Industry Studies		68	129	133	121
MUSC	Music	253	256	270	313	388
THFT	Theatre, Film and Television - BFA Program				133	129
THTE	Theatre, Film and Television - BA Program				10	14
THTR	Theatre	60	53	47	24	19
AMUD	Undetermined	95	103	94	60	63
COLLEGE OF BUSINESS		1,190	1,202	1,207	1,311	1,320
ACCT	Accounting	139	164	219	274	237
BGEN	General Business	12	6	12	12	3
FNCE	Finance	207	236	229	227	228
INBU	International Business	93	103	113	135	142
INFS	Information Systems	251	185	131	95	75
MGMT	Management	146	172	177	224	250
MKTG	Marketing	154	181	169	199	227
PHRM	Human Resources Management	34	22	18	25	24
BUUD	Undetermined	154	133	139	120	134
SCHOOL OF DENTISTRY		39	39	45	46	48
	Dental Hygiene	39	39	45	46	48
SCHOOL OF EDUCATION AND HUMAN DEVELOPMENT						62
LBIO	Licensure: Science Biology					3
LEGL	Licensure: English					14
LELE	Licensure: Elementary					35
LERT	Licensure: Science Earth					1
LELF	Licensure: French					1
LMTH	Licensure: Mathematics					1
LSCI	Licensure: Science General					3
LSOC	Licensure: Social Studies					4
COLLEGE OF ENGINEERING AND APPLIED SCIENCE		642	613	575	552	494
AMEN	Applied Mathematics	3	2	1		
CVEN	Civil Engineering	107	114	102	112	113
CSCI	Computer Science & Engineering	277	260	203	131	94
EEEN	Electrical Engineering	126	118	147	159	139
EECI	Electrical Engineering and Computer Science	1	1			
MCEN	Mechanical Engineering	98	92	104	124	123
ENUD	Undetermined	30	26	18	26	25
COLLEGE OF LIBERAL ARTS AND SCIENCES		3,807	3,955	4,053	4,273	4,385
ANTH	Anthropology	64	60	76	71	60
BIOL	Biology	412	468	523	595	691
CHEM	Chemistry	78	82	101	120	124
COMM	Communication	125	153	162	222	314
ECON	Economics	88	96	101	108	99
ENGL	English	129	139	132	171	180
EWRT	English Writing	99	112	110	144	133
FREN	French	25	28	28	19	19
GEOG	Geography	28	44	53	61	69
GEOL	Geology	28	30	15	6	4
GRMN	German	14	14	8	4	1
HIST	History	107	128	136	154	145
INST	Individually Structured	37	57	105	140	125
INTS	International Studies					32
MATH	Mathematics	83	88	84	97	83

MAJOR CODE		Fall 2001	Fall 2002	Fall 2003	Fall 2004	Fall 2005
	(continued)					
PHIL	Philosophy	67	62	47	52	56
PHYS	Physics	32	27	36	36	42
PSCI	Political Science	185	202	216	251	270
PRBU	Pre-Business	369	350	347	338	296
PRCH	Pre-Child Health Associate	4	1	2	6	5
PRCO	Pre-Communication	169	151	151	81	15
PRDH	Pre-Dental Hygiene	4	14	15	14	25
PRDE	Pre-Dentistry	13	14	20	20	14
PRED	Pre-Education	1				
PREN	Pre-Engineering	334	312	266	214	189
PRJR	Pre-Journalism	7	8	12	13	11
PRMT	Pre-Medical Technology			3	2	2
PRMD	Pre-Medicine	113	109	106	101	116
PRNU	Pre-Nursing	56	81	99	127	128
PROP	Pre-Optometry	1				
PRPH	Pre-Pharmacy	41	45	45	57	60
PRPT	Pre-Physical Therapy	14	9	13	17	20
PRVT	Pre-Veterinary Medicine	5	10	8	5	7
PSYC	Psychology	379	361	376	381	398
PSYS	Psychology - BS	54	75	82	101	121
SOCI	Sociology	109	104	116	144	162
SPAN	Spanish	32	37	30	34	35
LAUD	Undetermined	501	484	429	367	334
SCHOOL OF MEDICINE				1		
	Child Health Associate/Physician Assistant			1		
SCHOOL OF NURSING		220	270	274	314	374
	Baccalaureate Nursing	208	261	254	282	341
	RN to BS	8	6	16	30	30
	Nondegree RN to MS	4	3	4	2	3
OTHER		152	141	105	109	107
	Other Units	1				
	Non-Degree	151	141	105	109	107
TOTAL		6,733	7,006	7,155	7,610	7,868

Notes:

Data are end-of-term figures for all DDC programs and for the 2004 and 2005 HSC programs.
All other HSC program figures are census.

Source:

Office of Institutional Research, Planning & Analysis

**ENROLLMENTS BY MAJOR HISTORY - GRADUATE STUDENTS
FALL 2001-FALL 2005**

MAJOR CODE		Fall 2001	Fall 2002	Fall 2003	Fall 2004	Fall 2005
COLLEGE OF ARCHITECTURE AND PLANNING		400	421	441	517	485
ARCH	Architecture	225	234	238	283	257
ARUR	Architecture in Urban Design	4	4	4	9	9
DSPL	Design and Planning	27	31	31	28	31
LAND	Landscape Architecture	62	74	80	82	80
PLDS	Planning and Design					
URRP	Urban and Regional Planning	82	78	88	115	108
COLLEGE OF ARTS AND MEDIA			0	7	11	17
RAMS	Recording Arts			7	11	17
COLLEGE OF BUSINESS		1,300	1,388	1,329	1,261	1,087
ACCT	Accounting	70	88	114	122	116
AMBA	Business Administration - One Year Program	2				
BGEN	General Business					
BUUD	Undetermined					
FNCE	Finance	161	136	141	117	96
GMBA	Business Administration - Greeley Program					
HLAD	Health Administration	13	14	11	14	7
INBU	International Business	43	53	43	45	40
INFS	Information Systems	264	201	152	104	82
MBAC	Master of Business Administration - Cohort Program	99	100	73	22	11
MBAD	Master of Business Administration	506	644	631	679	596
MBAH	Master of Business Administration Health	51	59	69	67	62
MBAO	Master of Business Administration - Other	2	2			
MGMT	Management				1	
MKTG	Marketing	44	50	46	46	41
MSIS	Management Sciences - Information Systems				1	
ORMG	Organization Management	45	41	41	33	23
PHIS	Computer Science and Information Systems			8	10	13
PHRM	Human Resources Management					
COLLEGE OF ENGINEERING AND APPLIED SCIENCE		306	335	352	368	333
CMSC	Computer Science	119	153	149	163	134
CSCI	Computer Science	1				
CVEN	Civil Engineering	94	84	101	97	98
EEEN	Electrical Engineering	28	39	42	36	39
MAEG	Engineering	36	31	29	38	31
MCEN	Mechanical Engineering	28	28	19	22	21
PHCS	Computer Science and Information Systems			12	12	10
SCHOOL OF EDUCATION AND HUMAN DEVELOPMENT		1,236	1,311	1,354	1,389	1,233
ADAP	Educational Leadership and Innovation - Access	8	3	2	2	
ADSC	Administration Supervision Curriculum Development		4			
ALAP	Administration Leadership and Professional Studies - Access	3				
ALIB	Information/Learning Technology - Alternative School Librarian					1
ALPE	Administration Leadership and Professional Studies					57
ALPS	Administration Leadership and Professional Studies	99	134	114	98	80
CACR	Counseling Psychology and Counselor Education - Agency CAR					3
CAEP	Counseling Psychology and Counselor Education - Agency EAF					1
CAIN	Counseling Psychology and Counselor Education - INT				1	11
CAEP	Counseling Psychology and Counselor Education - Agency MUL					4
CCFC	Counseling Psychology and Counselor Education - Family				1	32
CEAP	Counseling Psychology and Counselor Education - Access		16	1		
CEAP	Counseling Psychology and Counselor Education - Access	27				
CIAP	Curriculum and Instruction - Access	2		1		1
CIED	Curriculum and Instruction	476	498	306	252	123
CIEN	Curriculum and Instruction - English (Secondary)			5	2	5
CILT	Certificate: Inst Design and Adult Learning					2
CIMA	Curriculum and Instruction - Mathematics (Elem. & Secondary)			5	14	14

MAJOR CODE		Fall 2001	Fall 2002	Fall 2003	Fall 2004	Fall 2005
	(continued)					
CIMH	Curriculum and Instruction - Mental Health (Elem. & Secondary)			1	8	8
CISC	Curriculum and Instruction - Science (Elem. & Secondary)			1	3	8
CISS	Curriculum and Instruction - Social Studies (Secondary)			1	5	3
CITE	Curriculum and Instruction - Technology (Elem. & Secondary)			3	6	2
CPCE	Counseling Psychology and Counselor Educator	170	168	181	194	96
CPEL	Curriculum and Instruction - Elementary					7
CPMA	Curriculum and Instruction - Mathematics					5
CPSI	Curriculum and Instruction - Science					3
CPSO	Curriculum and Instruction - Social Studies					5
CSCH	Counseling Psychology and Counselor Education - Schoo				1	18
DEGL	Curriculum and Instruction - Secondary English Dual Lic			2	2	1
DELE	Curriculum and Instruction - Elementary Educ Dual Lic			12	23	15
DSCI	Curriculum and Instruction - Science (General Special Education)				1	1
DSOC	Curriculum and Instruction - Social Studies (Special Education)				1	2
EBIL	Curriculum and Instruction - Belm/Bilingual/ESL			4	15	12
ECAP	Early Childhood Education - Access	9	11	17	17	10
ECED	Early Childhood Education	46	46	67	71	41
ECSE	Early Childhood Special Education					39
EDLI	Educational Leadership and Innovation	94	93	89	84	81
EECE	Endorsement - Early Childhood Special Education			1		4
ELEM	Elementary Education			123	117	71
ELIB	Endorsement - Library Media			2	3	1
ELSE	Curriculum and Instruction - BIL /ESL Elem				1	
EPSA	Education Psychology - Access (Elem. & Secondary)			4	5	6
EPSC	Endorsement - School Counselor			1	3	4
EPSG	Education Psychology - Gro/Dev/Lrn (Elem. & Secondary)			4	11	8
EPSY	Educational Psychology	24	29	41	56	50
ERDG	Curriculum and Instruction - Elementary Literacy			8	15	15
ESLA	Curriculum and Instruction - ESL Adult					5
ESLE	Curriculum and Instruction - Bilingual/ESL Elementary					22
ESLS	Curriculum and Instruction - Bilingual/ESL Secondary					3
ESPD	Endorsement - Special Education			1	2	5
ETLD	Endorsement - Teacher Linqst DVRSE			13	6	5
ILTA	Information and Learning Technologies, Instruction Design/Adult Learne				2	9
ILTK	Information and Learning Technologies - K-12					25
INLT	Information and Learning Technologies	99	113	114	107	50
LPRI	Licensure: School Principal			6	8	1
LSPY	Licensure: School Psychology			8	8	7
NWEA	Non-Degree - Access	4	2	3		
RALL	Curriculum and Instruction - Reading/Writing K-12					3
RELM	Curriculum and Instruction - Reading/Writing K-6					35
REND	Endorsement: Reading Teacher				2	3
RENG	Curriculum and Instruction - English Education					5
RSEC	Curriculum and Instruction - Reading/Writing 7-12					15
SBIL	Curriculum and Instruction - Secondary Bilingual/ESL				6	5
SBIO	Curriculum and Instruction - Science - Biology			10	10	5
SCAP	Administration Supervision Curriculum Development - Access					
SCHM	Curriculum and Instruction - Science - Chemistry			1	1	
SEGL	Curriculum and Instruction - English			24	35	14
SERT	Curriculum and Instruction - Science - Earth				1	1
SFLF	Curriculum and Instruction - Foreign Language - French			1		
SFLG	Curriculum and Instruction - Foreign Language - German			2		
SFLS	Curriculum and Instruction - Foreign Language - Spanish			2		
SFLS	Curriculum and Instruction - Foreign Language - Spanish				2	3
SLIB	Information and Learning Technologies - School Librarian					3
SMTH	Curriculum and Instruction - Mathematics			12	13	7
SPDG	Special Education Generalist					20
SPD1	Special Education - Teacher 1			24	43	16
SPD2	Special Education - Teacher 2			15	12	8
SPD3	Special Education - Teacher 3			2	1	
SPED	Special Education	75	103	35	17	11
SPHY	Curriculum and Instruction - Science - Physics			2	1	
SPSY	School Psychology	41	52	57	59	61
SRDG	Curriculum and Instruction - Secondary Literacy				2	2

MAJOR CODE		Fall 2001	Fall 2002	Fall 2003	Fall 2004	Fall 2005
SSCI	Curriculum and Instruction - Science - General			2	9	5
SSOC	Curriculum and Instruction - Social Studies			14	22	12
TCAP	Teacher Certification - Access	1	2			
TECE	Teacher Certification	43	34	10	8	4
TLIB	Information and Learning Technologies - Teacher Librarian					13
XINL	Information and Learning Technologies - Executive	4	1			
XTEC	Teacher Certification	11	2			
COLLEGE OF LIBERAL ARTS AND SCIENCES		546	595	615	645	668
AMEN	Applied Mathematics	58	57	58	65	74
ANTH	Anthropology	33	40	39	28	33
BIOL	Biology	19	24	25	26	32
BSCI	Basic Science	11				
CHEM	Chemistry	25	25	16	20	19
CMTH	Communication and Theatre		1			
COMM	Communication	12	32	22	16	16
ECON	Economics	50	37	34	41	38
ENGL	English	37	42	51	68	79
EVSC	Environmental Sciences	33	40	39	39	33
HBSC	Health and Behavioral Sciences	28	29	35	32	30
HIST	History	35	47	50	53	60
HUMN	Humanities	50	56	63	61	53
ISCI	Integrated Sciences		16	17	18	14
PSCI	Political Science	44	42	39	48	38
PSYC	Psychology	37	31	36	31	23
PUBH	Public Health					
SOCI	Sociology	14	23	35	27	45
SOCS	Social Science	34	24	35	52	57
SPAN	Spanish					10
TECH	Technical Communication	26	29	21	20	14
SCHOOL OF MEDICINE		598	665	728	712	704
	Graduate students	504	552	596	613	547
	MPAS					40
	Non-Degree	94	113	132	99	117
SCHOOL OF NURSING		243	262	228	231	261
	Graduate students	243	262	228	231	261
SCHOOL OF PHARMACY		42	45	42	50	48
	Graduate students	38	43	40	48	45
	Non-Degree	4	2	2	2	3
GRADUATE SCHOOL OF PUBLIC AFFAIRS		352	337	359	340	297
AMPA	Public Administration - Accelerated				1	1
CRJU	Criminal Justice	72	60	49	49	39
EXPA	Public Administration - Executive	13	14	26	27	21
PADM	Public Administration	196	201	218	208	186
PAWS	Public Administration - Western Slope	11	10	8	7	10
PAFF	Public Affairs	60	51	57	48	40
PADC	Public Administration - Certificate		1	1		
OTHER		667	743	678	535	485
	Other Units	3	4			
	Non-Degree	664	739	678	535	485
TOTAL		5,690	6,102	6,133	6,059	5,618

Notes:

1. The Master of Basic Science was renamed to Integrated Sciences in 2003.
2. Data are end-of-term figures for all DDC programs and for the 2004 and 2005 HSC programs. All other HSC program figures are census.

Source:

Office of Institutional Research, Planning & Analysis

**ENROLLMENTS BY MAJOR HISTORY - FIRST PROFESSIONAL
FALL 2001-FALL 2005**

	<u>Fall</u> <u>2001</u>	<u>Fall</u> <u>2002</u>	<u>Fall</u> <u>2003</u>	<u>Fall</u> <u>2004</u>	<u>Fall</u> <u>2005</u>
SCHOOL OF DENTISTRY	143	152	164	170	182
Dental Students	143	152	164	170	182
SCHOOL OF MEDICINE	546	534	526	620	657
Medical Students	546	534	526	555	566
DPT Students	na	na	na	65	91
SCHOOL OF NURSING	105	115	116	127	57
Doctor of Nursing Practice					50
Nursing Doctorate Students	105	115	116	127	7
SCHOOL OF PHARMACY	331	394	443	485	515
PharmD Students	331	394	443	485	515
OTHER	0	0	0	0	0
Other Units					
Non-Degree					
TOTAL	1,125	1,195	1,249	1,402	1,411

Notes:

1. Data are end-of-term figures for 2004 and 2005. All others are census.

Source:

Office of Institutional Research, Planning & Analysis

**ETHNIC DISTRIBUTION OF HEADCOUNT STUDENTS
FALL SEMESTERS**

	ASIAN AMERICAN		AFRICAN AMERICAN		HISPANIC		NATIVE AMERICAN		MINORITY TOTAL		WHITE		NON-RES. ALIEN		TOTAL	
	N	%	N	%	N	%	N	%	N	%	N	%	N	%	N	%
FALL 2001	1,094	8%	498	4%	1,112	8%	124	1%	2,828	21%	9,888	73%	832	6%	13,548	100%
FALL 2002	1,162	8%	494	3%	1,120	8%	135	1%	2,911	20%	10,578	74%	814	6%	14,303	100%
FALL 2003	1,189	8%	494	3%	1,207	8%	127	1%	3,017	21%	10,909	75%	611	4%	14,537	100%
FALL 2004	1,231	8%	508	3%	1,265	8%	122	1%	3,126	21%	11,401	76%	544	4%	15,071	100%
FALL 2005	1,154	8%	499	3%	1,296	9%	116	1%	3,065	21%	11,354	76%	478	3%	14,897	100%

Notes:

1. Unknowns included in WHITE count.
2. N = student headcount
3. Data are end-of-term figures.

Source:

Enrollment Reports
Office of Institutional Research, Planning & Analysis

**AGE DISTRIBUTION
FALL 2005**

	UNDERGRADUATE			GRADUATE			FIRST PROFESSIONAL			TOTAL		
	N	%	CUM %	N	%	CUM %	N	%	CUM %	N	%	CUM %
19 & Under	1,611	20.48%	20.48%	0	0.00%	0.00%	3	0.04%	0.04%	1,614	10.83%	10.83%
20-24	3,658	46.49%	66.97%	726	12.92%	12.92%	475	6.04%	6.08%	4,859	32.62%	43.45%
25-29	1,338	17.01%	83.97%	1,985	35.33%	48.26%	642	8.16%	14.23%	3,965	26.62%	70.07%
30-34	617	7.84%	91.81%	1,250	22.25%	70.51%	174	2.21%	16.45%	2,041	13.70%	83.77%
35-39	288	3.66%	95.48%	624	11.11%	81.61%	64	0.81%	17.26%	976	6.55%	90.32%
40-44	171	2.17%	97.65%	374	6.66%	88.27%	23	0.29%	17.55%	568	3.81%	94.13%
45-49	107	1.36%	99.01%	318	5.66%	93.93%	15	0.19%	17.74%	440	2.95%	97.09%
50-54	47	0.60%	99.61%	218	3.88%	97.81%	12	0.15%	17.90%	277	1.86%	98.95%
55-59	19	0.24%	99.85%	96	1.71%	99.52%	2	0.03%	17.92%	117	0.79%	99.73%
60 & over	12	0.15%	100.00%	27	0.48%	100.00%	1	0.01%	17.93%	40	0.27%	100.00%
TOTAL	7,868	100.00%	100.00%	5,618	100.00%	100.00%	1,411	17.93%	17.93%	14,897	100.00%	100.00%

AVERAGE AGE

24.4

32.7

27.1

27.8

Notes:

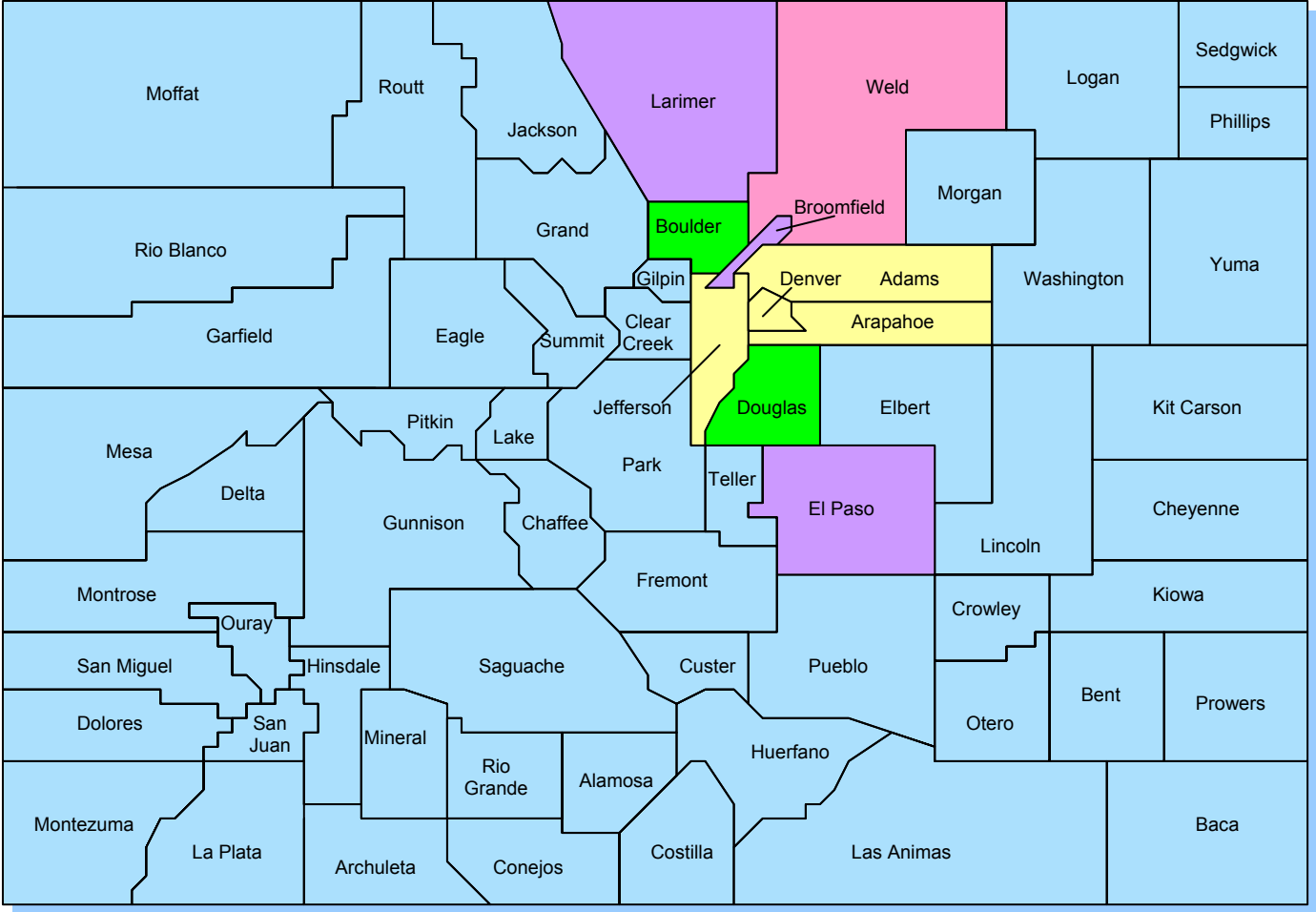
1. Data are end-of-term figures.
2. N = student headcount
3. CUM % = cumulative percent

Source:

Age Distribution Report
Office of Institutional Research, Planning & Analysis

Student Headcount by County

Fall, 2005



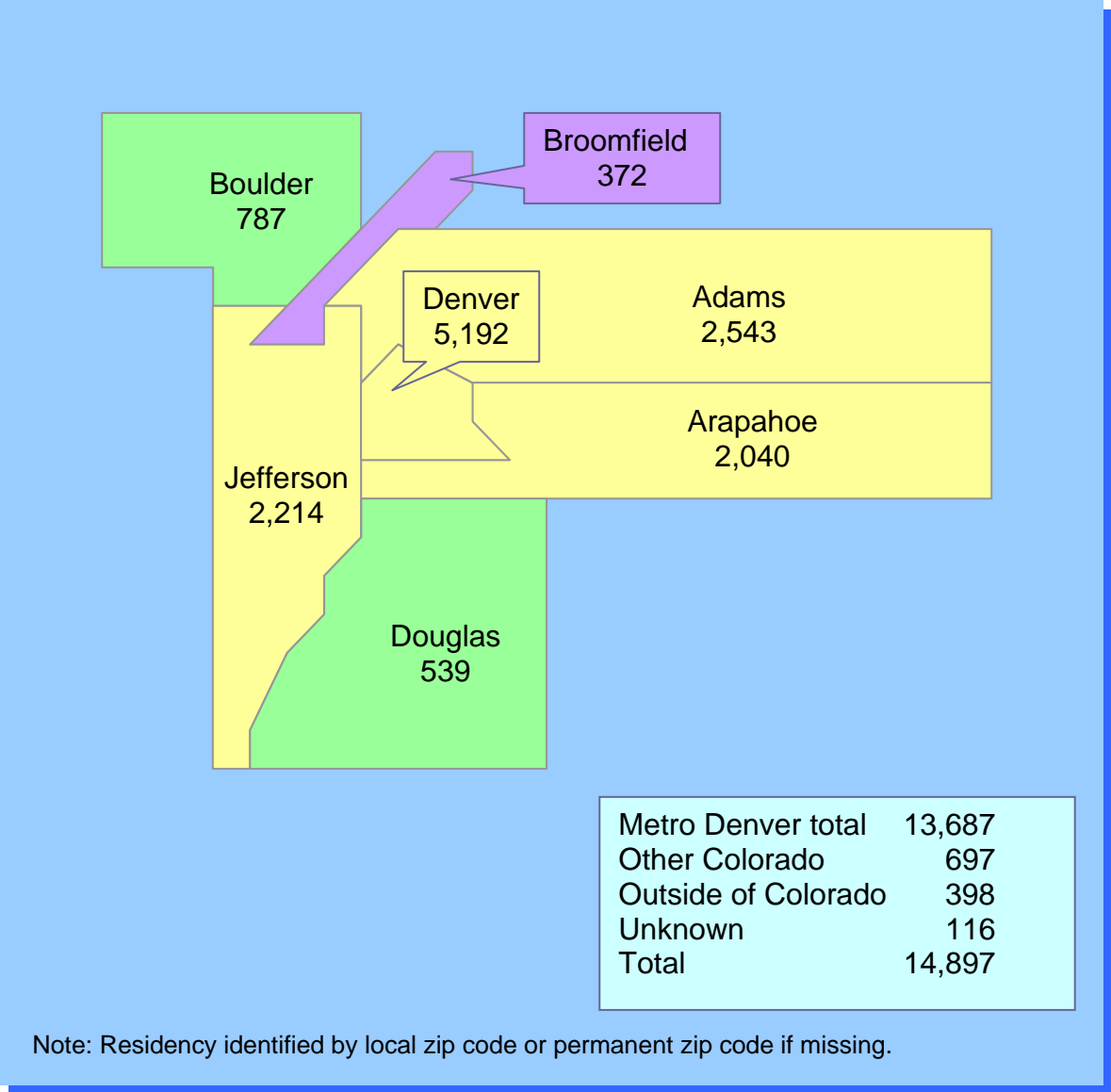
Outside Colorado ■
 Unknown ■

Legend

- 1000 +
- 500-999
- 100-499
- 50-99
- Less than 50

Note: Residency identified by local zip code or permanent zip code if missing.

Student Headcount by Metro Denver County Fall, 2005



**AVERAGE STUDENT CREDIT HOUR LOAD
BY LEVEL FOR FALL SEMESTERS**

FALL SEMESTER/ QUARTER	UNDERGRADUATE			GRADUATE			First Professional			TOTAL		
	STUDENTS	SCH	AVG SCH PER HC	STUDENTS	SCH	AVG SCH PER HC	STUDENTS	SCH	AVG SCH PER HC	STUDENTS	SCH	AVG SCH PER HC
2001	6,733	78,269	11.62	5,690	37,180	6.53	1,125	21,080	18.74	13,548	115,449	8.52
2002	7,006	83,654	11.94	6,102	40,264	6.60	1,195	22,102	18.50	14,303	123,918	8.66
2003	7,155	85,263	11.92	6,133	41,140	6.71	1,249	23,742	19.01	14,537	126,403	8.70
2004	7,610	90,476	11.89	6,059	39,960	6.60	1,402	25,728	18.35	15,071	130,436	8.65
2005	7,868	93,953	11.94	5,618	36,380	6.48	1,411	27,373	19.40	14,897	157,706	10.59

Notes:

1. Data are end-of-term figures.
2. SCH = Student Credit Hours
3. HC = Headcount students

Source:

Enrollment Reports
Office of Institutional Research, Planning & Analysis

**UNDERGRADUATE APPLICANTS BY ACADEMIC UNIT
FALL 2004 AND FALL 2005**

Academic Unit	APPLICATIONS			STUDENTS ADMITTED			STUDENTS REGISTERED		
	Fall 2004	Fall 2005	% Change 04 to 05	Fall 2004	Fall 2005	% Change 04 to 05	Fall 2004	Fall 2005	% Change 04 to 05
Arts & Media	672	704	4.8%	478	508	6.3%	312	305	-2.2%
Freshmen	324	348	7.4%	215	236	9.8%	123	117	-4.9%
Transfers	316	335	6.0%	236	255	8.1%	167	180	7.8%
Readmitted	32	21	-34.4%	27	17	-37.0%	22	8	-63.6%
Business	774	810	4.7%	498	481	-3.4%	308	265	-14.0%
Freshmen	310	397	28.1%	162	202	24.7%	68	79	16.2%
Transfers	414	370	-10.6%	291	240	-17.5%	210	164	-21.9%
Readmitted	50	43	-14.0%	45	39	-13.3%	30	22	-26.7%
Dentistry	86	76	-11.6%	31	29	-6.5%	24	24	0.0%
Transfers	86	76	-11.6%	31	29	-6.5%	24	24	0.0%
Education	0	51	na	0	50	na	0	40	na
Freshmen	na	na	na	na	na	na	na	na	na
Transfers	na	51	na	na	50	na	na	40	na
Readmitted	na	na	na	na	na	na	na	na	na
Engineering	316	369	16.8%	165	191	15.8%	94	83	-11.7%
Freshmen	174	246	41.4%	87	137	57.5%	39	51	30.8%
Transfers	122	108	-11.5%	62	41	-33.9%	46	24	-47.8%
Readmitted	20	15	-25.0%	16	13	-18.8%	9	8	-11.1%
Liberal Arts	3,258	3,326	2.1%	2,468	2,500	1.3%	1,349	1,368	1.4%
Freshmen	1,565	1,727	10.4%	1,138	1,253	10.1%	502	543	8.2%
Transfers	1,475	1,395	-5.4%	1,122	1,058	-5.7%	715	711	-0.6%
Readmitted	218	204	-6.4%	208	189	-9.1%	132	114	-13.6%
Nursing	730	750	2.7%	189	211	11.6%	165	188	13.9%
Transfers	730	750	2.7%	189	211	11.6%	165	188	13.9%
Non-Degree	286	269	-5.9%	275	256	-6.9%	91	84	-7.7%
New	220	196	-10.9%	214	185	-13.6%	73	63	-13.7%
Readmitted	66	73	10.6%	61	71	16.4%	18	21	16.7%
TOTAL	6,122	6,304	3.0%	4,104	4,176	1.8%	2,343	2,317	-1.1%
New	5,736	5,948	3.7%	3,747	3,847	2.7%	2,132	2,144	0.6%
Former	386	356	-7.8%	357	329	-7.8%	211	173	-18.0%

Notes:

"Students Registered" are end-of-term figures.

Source:

Final Fall 2005 Admissions Report

Office of Admissions and Records

**FY FTE STUDENTS BY SCHOOL/COLLEGE AND DEPARTMENT
2000-01 THROUGH 2004-05**

	<u>2000-01</u>	<u>2001-02</u>	<u>2002-03</u>	<u>2003-04</u>	<u>2004-05</u>
ARCHITECTURE AND PLANNING¹	342.1	337.3	360.9	393.7	448.7
ARTS AND MEDIA	525.7	583.1	681.0	743.0	819.8
BUSINESS	1462.0	1527.8	1608.6	1569.2	1470.9
LIBERAL ARTS AND SCIENCES	3688.4	3879.9	4092.5	4197.0	4451.9
Anthropology	151.5	155.3	162.1	168.9	156.2
Biology	283.0	279.4	330.5	374.5	395.9
Chemistry	218.7	205.0	235.4	252.3	249.4
Chinese	7.5	11.7	7.4	6.7	5.8
Chinese Studies	3.7	6.7	6.6	3.4	3.3
CLAS	7.1	7.1	3.8	3.4	3.0
Communication	261.4	309.0	338.8	334.8	333.2
CSL					8.5
Economics	226.8	246.4	249.0	259.2	263.7
English	433.7	448.8	480.1	503.1	569.6
Environmental Sciences	33.9	41.5	42.7	47.7	48.5
Ethnic Studies	16.5	19.0	21.9	24.8	39.2
French	38.1	47.1	44.9	29.4	38.2
Geography	55.4	59.9	66.6	79.9	84.8
Geology	34.3	37.9	40.3	42.5	38.5
German	28.5	28.9	28.2	24.0	28.8
Health and Behavioral Sciences	14.8	11.4	14.8	15.7	18.7
History	179.9	186.6	192.5	207.9	249.6
Humanities	9.5	7.1	8.6	12.8	15.1
Latin	4.1	11.0	14.3	5.8	7.3
Mathematics	419.3	445.9	461.8	445.1	426.9
Modern Language					0.6
Philosophy	196.0	194.9	191.7	184.7	184.3
Physics	178.1	188.7	172.3	183.0	193.8
Political Science	165.3	192.1	203.2	217.8	230.9
Psychology	332.3	337.4	340.4	367.0	420.4
Religious Studies	7.5	20.5	20.6	22.6	26.3
Russian	17.2	11.1	9.4	3.3	3.8
Social Science	6.1	5.6	6.2	11.4	12.8
Sociology	182.7	194.8	219.0	244.9	268.4
Spanish	152.3	165.4	177.4	120.4	126.4
Technical Communication	23.2	3.7	2.0	0.0	0.0
EDUCATION	723.7	800.5	902.4	959.0	927.6
ENGINEERING	649.2	575.9	572.1	533.5	503.2
MILLENNIUM COLLEGE	9.3	8.9	9.1	10.1	0.0
PUBLIC AFFAIRS	170.6	179.7	181.9	174.3	164.4
UCDHSC - DOWNTOWN DENVER TOTALS	7571.0	7893.1	8408.5	8579.8	8786.5

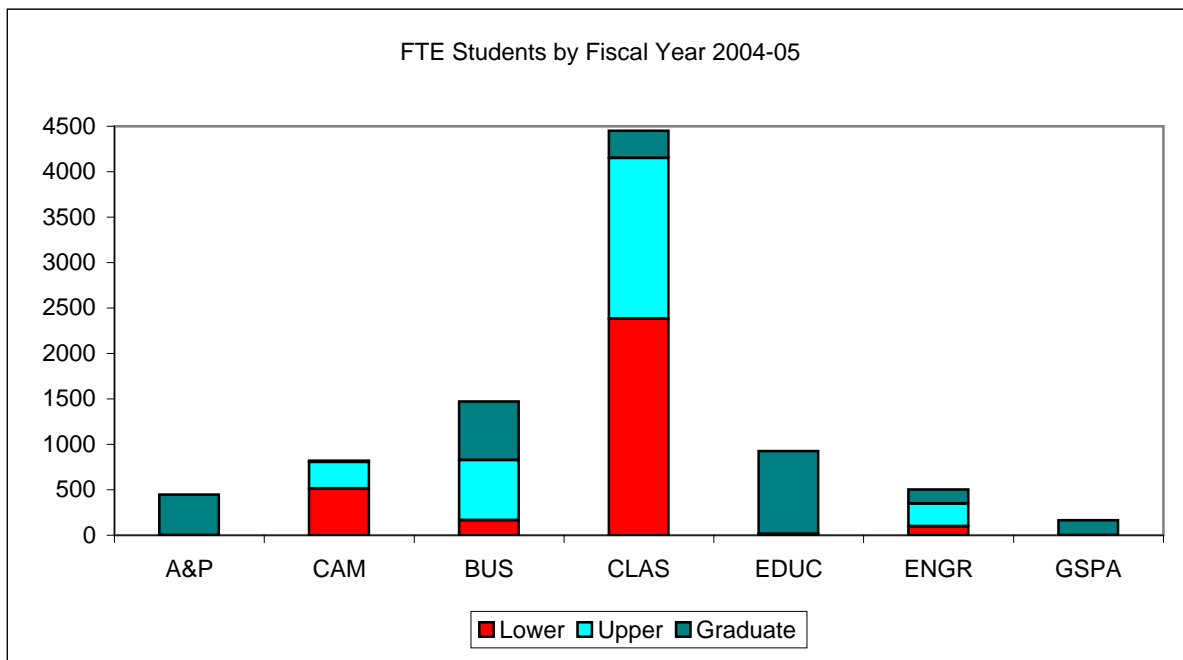
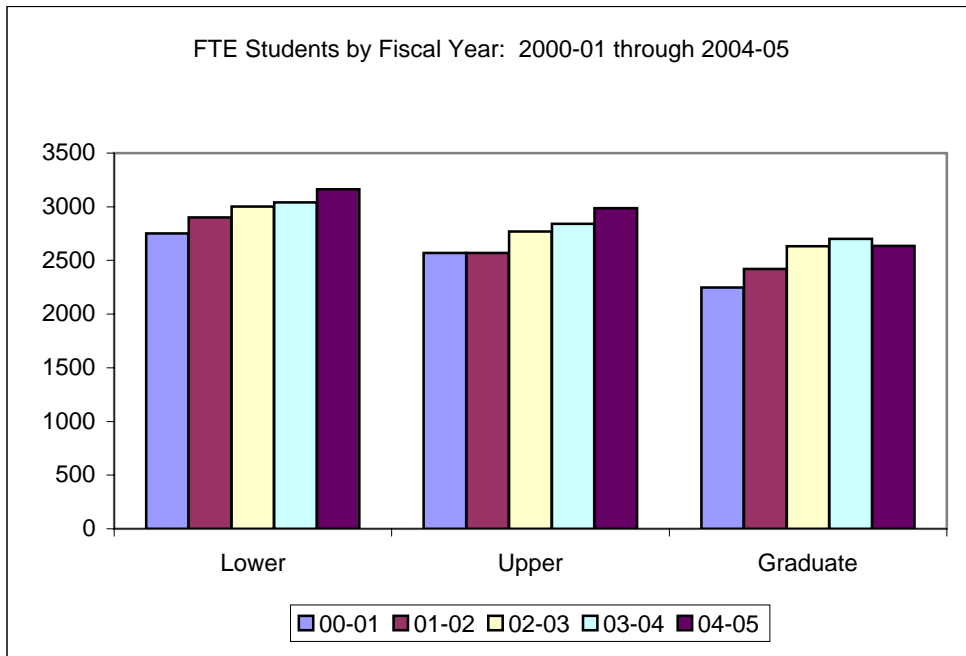
Notes:

1. Architecture & Planning does not include students from the undergraduate Environmental Design program taught in Boulder.

Source:

Student Credit Hour Summaries, Office of Institutional Research, Planning & Analysis

FY FTE STUDENTS BY LEVEL OF INSTRUCTION DOWNTOWN DENVER CAMPUS



Notes:

1. Architecture & Planning does not include students from the undergraduate Environmental Design program taught in Boulder.
2. Arts, Fine Arts, Music and Theatre were transferred into Arts & Media FY 1997-98.

Source:

Student Credit Hours Summaries
Office of Institutional Research, Planning & Analysis

**FY FTE STUDENTS
BY SCHOOL/COLLEGE AND LEVEL OF INSTRUCTION**

	<u>Lower UG</u>	<u>Upper UG</u>	<u>Total UG</u>	<u>Grad I</u>	<u>Grad II</u>	<u>Total Grad</u>	<u>Total</u>
ARCHITECTURE & PLANNING							
2000-01	0.0	0.6	0.6	333.6	7.8	341.4	342.0
2001-02	0.0	0.2	0.2	328.4	8.7	337.1	337.3
2002-03	0.0	0.8	0.8	349.4	10.7	360.1	360.9
2003-04	0.0	1.9	1.9	381.4	10.4	391.8	393.7
2004-05	0.0	0.6	0.6	439.6	8.5	448.1	448.7
ARTS & MEDIA							
2000-01	349.6	169.2	518.8	6.9	0.0	6.9	525.7
2001-02	369.2	204.7	573.9	9.1	0.0	9.1	583.0
2002-03	428.6	242.5	671.1	9.9	0.0	9.9	681.0
2003-04	475.5	257.6	733.1	9.9	0.0	9.9	743.0
2004-05	514.3	291.8	806.1	13.7	0.0	13.7	819.8
BUSINESS							
2000-01	170.9	634.1	805.0	657.0	0.0	657.0	1462.0
2001-02	178.5	644.9	823.4	704.4	0.0	704.4	1527.8
2002-03	171.7	676.6	848.3	759.2	1.1	760.3	1608.6
2003-04	166.7	660.5	827.2	739.5	2.5	742.0	1569.2
2004-05	165.6	663.1	828.7	638.6	3.6	642.2	1470.9
LIBERAL ARTS & SCIENCES							
2000-01	2059.5	1394.9	3454.4	217.1	17.1	234.2	3688.6
2001-02	2211.6	1404.4	3616.0	248.0	15.9	263.9	3879.9
2002-03	2263.0	1550.8	3813.8	261.5	15.2	276.7	4090.5
2003-04	2278.9	1626.9	3905.8	271.1	20.1	291.2	4197.0
2004-05	2383.4	1767.5	4150.9	283.1	17.9	301.0	4451.9
EDUCATION							
2000-01	0.0	5.4	5.4	672.8	45.6	718.4	723.8
2001-02	0.0	1.3	1.3	758.1	41.1	799.2	800.5
2002-03	0.0	4.9	4.9	857.1	40.4	897.5	902.4
2003-04	0.0	8.4	8.4	907.4	43.2	950.6	959.0
2004-05	0.0	14.4	14.4	878.5	34.7	913.2	927.6
ENGINEERING							
2000-01	171.9	356.5	528.4	116.9	3.9	120.8	649.2
2001-02	142.1	306.6	448.7	124.6	2.6	127.2	575.9
2002-03	139.0	286.2	425.2	143.9	3.0	146.9	572.1
2003-04	118.3	274.4	392.7	133.8	7.0	140.8	533.5
2004-05	100.0	250.2	350.2	146.7	6.3	153.0	503.2
MILLENNIUM COLLEGE							
2000-01	0.0	9.3	9.3	0.0	0.0	0.0	9.3
2001-02	0.0	8.9	8.9	0.0	0.0	0.0	8.9
2002-03	0.0	9.1	9.1	0.0	0.0	0.0	9.1
2003-04	0.0	10.1	10.1	0.0	0.0	0.0	10.1
2004-05	0.0	0.0	0.0	0.0	0.0	0.0	0.0
PUBLIC AFFAIRS							
2000-01	0.0	0.0	0.0	143.7	26.9	170.6	170.6
2001-02	0.0	0.0	0.0	155.2	24.5	179.7	179.7
2002-03	0.0	0.0	0.0	157.0	24.9	181.9	181.9
2003-04	0.0	0.0	0.0	151.7	22.6	174.3	174.3
2004-05	0.0	0.0	0.0	144.9	19.5	164.4	164.4
UCDHSC - DOWNTOWN DENVER TOTALS							
2000-01	2751.9	2570.0	5321.9	2148.0	101.3	2249.3	7571.2
2001-02	2901.4	2571.0	5472.4	2327.8	92.8	2420.6	7893.0
2002-03	3002.3	2770.9	5773.2	2538.0	95.3	2633.3	8406.5
2003-04	3039.4	2839.8	5879.2	2594.8	105.8	2700.6	8579.8
2004-05	3163.3	2987.6	6150.9	2545.1	90.5	2635.6	8786.5

Notes:

1. Architecture & Planning does not include students from the undergraduate Environmental Design program taught in Boulder.

Source:

Student Credit Hour Summaries, Office of Institutional Research, Planning & Analysis

**FTE STUDENTS BY SCHOOL/COLLEGE,
DEPARTMENT AND LEVEL OF INSTRUCTION
FISCAL YEAR 2004-05**

	<u>Lower UG</u>	<u>Upper UG</u>	<u>Total UG</u>	<u>Grad I</u>	<u>Grad II</u>	<u>Total Grad</u>	<u>TOTAL</u>
ARCHITECTURE AND PLANNING¹	0.0	0.6	0.6	439.6	8.5	448.1	448.7
ARTS AND MEDIA	514.3	291.8	806.1	13.7	0.0	13.7	819.8
BUSINESS SCHOOL	165.6	663.1	828.7	638.6	3.6	642.2	1470.9
LIBERAL ARTS AND SCIENCES	2383.4	1767.5	4150.9	283.1	17.9	301.0	4451.9
Anthropology	82.1	60.9	143.0	13.2	0.0	13.2	156.2
Biology	176.1	196.7	372.8	23.1	0.0	23.1	395.9
Chemistry	135.6	106.2	241.8	7.6	0.0	7.6	249.4
Chinese	5.8	0.0	5.8	0.0	0.0	0.0	5.8
Chinese Studies	3.3	0.0	3.3	0.0	0.0	0.0	3.3
CLAS	1.9	1.1	3.0	0.0	0.0	0.0	3.0
Communication	162.9	154.3	317.2	16.0	0.0	16.0	333.2
CSL	0.0	8.5	8.5	0.0	0.0	0.0	8.5
Economics	154.6	89.4	244.0	19.7	0.0	19.7	263.7
English	294.7	237.3	532.0	37.6	0.0	37.6	569.6
Environmental Sciences	39.5	0.4	39.9	8.6	0.0	8.6	48.5
Ethnic Studies	7.5	31.7	39.2	0.0	0.0	0.0	39.2
French	27.9	10.3	38.2	0.0	0.0	0.0	38.2
Geography	40.6	40.8	81.4	3.4	0.0	3.4	84.8
Geology	33.4	4.4	37.8	0.7	0.0	0.7	38.5
German	24.2	4.6	28.8	0.0	0.0	0.0	28.8
Health and Behavioral Sciences	0.0	5.5	5.5	3.3	9.9	13.2	18.7
History	97.1	118.5	215.6	34.0	0.0	34.0	249.6
Humanities	0.0	3.0	3.0	12.1	0.0	12.1	15.1
Latin	7.3	0.0	7.3	0.0	0.0	0.0	7.3
Mathematics	296.3	92.7	389.0	29.9	8.0	37.9	426.9
Modern Language	0.0	0.4	0.4	0.2	0.0	0.2	0.6
Philosophy	119.8	60.4	180.2	4.1	0.0	4.1	184.3
Physics	181.4	12.4	193.8	0.0	0.0	0.0	193.8
Political Science	60.3	146.3	206.6	24.3	0.0	24.3	230.9
Psychology	229.7	176.8	406.5	13.9	0.0	13.9	420.4
Religious Studies	5.0	21.3	26.3	0.0	0.0	0.0	26.3
Russian	3.8	0.0	3.8	0.0	0.0	0.0	3.8
Social Science	0.0	0.0	0.0	12.8	0.0	12.8	12.8
Sociology	89.7	161.1	250.8	17.6	0.0	17.6	268.4
Spanish	102.9	22.5	125.4	1.0	0.0	1.0	126.4
EDUCATION	0.0	14.4	14.4	878.5	34.7	913.2	927.6
ENGINEERING	100.0	250.2	350.2	146.7	6.3	153.0	503.2
PUBLIC AFFAIRS	0.0	0.0	0.0	144.9	19.5	164.4	164.4
UCDHSC - DOWNTOWN DENVER TOTALS	3163.3	2987.6	6150.9	2545.1	90.5	2635.6	8786.5

Notes:

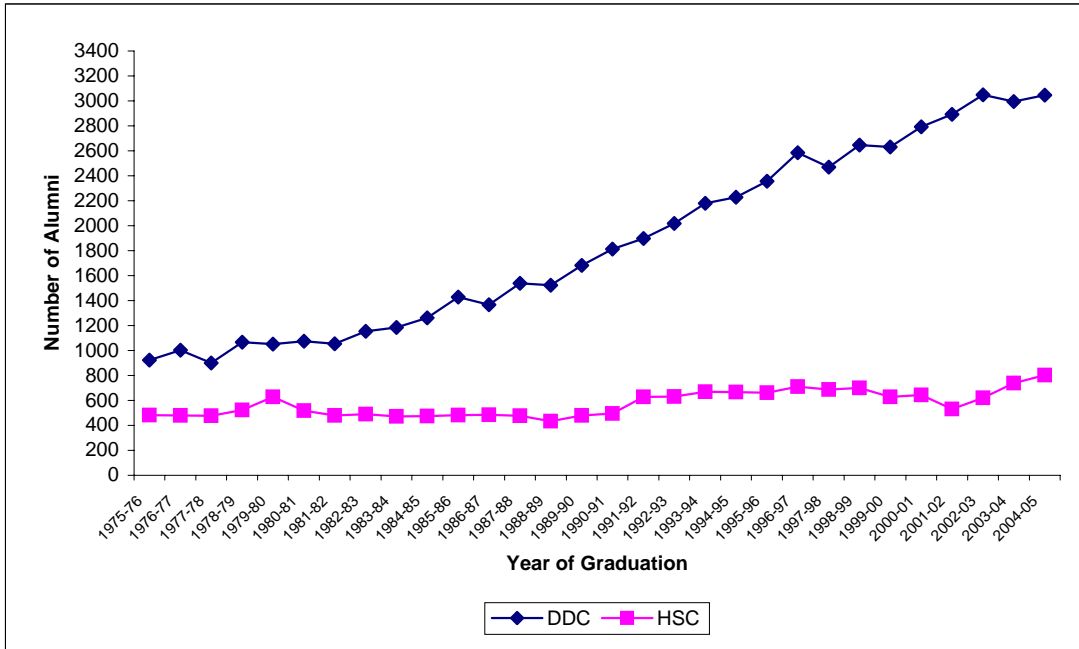
1. Architecture & Planning does not include students from the undergraduate Environmental Design program taught in Boulder.

Source:

Student Credit Hour Summaries, Office of Institutional Research, Planning & Analysis

Section III.
Alumni Data

ALUMNI BY YEAR OF GRADUATION



NUMBER OF ALUMNI

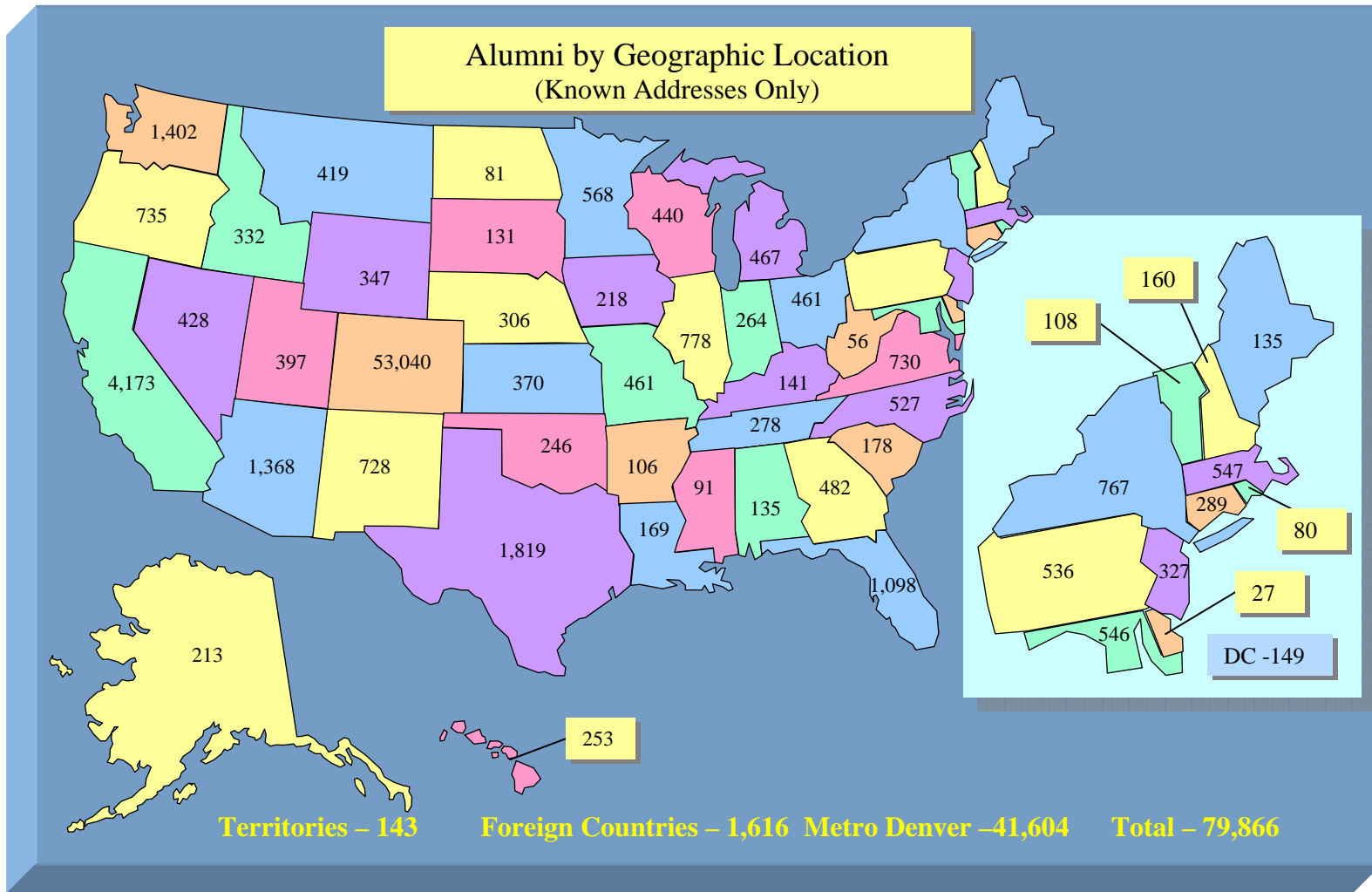
YEAR OF GRADUATION	DOWNTOWN DENVER PROGRAMS	HEALTH SCIENCES PROGRAMS	UCDHSC TOTAL
Before 1975	5,053		5,053
1975-80	4,943	2,590	7,533
1980-81	1,074	517	1,591
1981-82	1,055	479	1,534
1982-83	1,154	489	1,643
1983-84	1,185	473	1,658
1984-85	1,261	474	1,735
1985-86	1,428	483	1,911
1986-87	1,366	484	1,850
1987-88	1,538	477	2,015
1988-89	1,524	433	1,957
1989-90	1,681	479	2,160
1990-91	1,813	495	2,308
1991-92	1,897	629	2,526
1992-93	2,018	632	2,650
1993-94	2,179	669	2,848
1994-95	2,228	667	2,895
1995-96	2,357	662	3,019
1996-97	2,584	710	3,294
1997-98	2,468	687	3,155
1998-99	2,645	700	3,345
1999-00	2,631	628	3,259
2000-01	2,792	643	3,435
2001-02	2,892	531	3,423
2002-03	3,049	620	3,669
2003-04	2,996	679	3,675
2004-05	3,046	802	3,848
TOTAL	60,857	17,132	77,989

University of Colorado Foundation Counts Reports for Years prior to 1975-76.

CCHE Degree Programs Offered and Certificates & Degrees Conferred for 1975-76 and later.

Note:

Data not available for Health Sciences Programs degrees awarded prior to 1975-76.



Data Source : University of Colorado Foundation Data Services

**ALUMNI BY DEGREES
CUMULATIVE 1975-76 THROUGH 2004-05**

	<u>Undergraduate</u>	<u>Graduate</u>	<u>Total</u>
ARCHITECTURE & PLANNING		3,212	3,212
Architecture		1,708	1,708
Design and Planning		11	11
Design Studies		1	1
Interior Design		48	48
Landscape Architecture		450	450
Urban and Regional Planning		836	836
Urban Design		158	158
ARTS & MEDIA	644	5	649
Fine Arts	200	0	200
Fine Arts-BFA	135	0	135
Music	238	0	238
Recording Arts	0	5	5
Theatre	32	0	32
Theatre, Film & Television-BA	13	0	13
Theatre, Film & Television-BFA	26		26
BUSINESS	7,461	9,932	17,393
Accounting	0	591	591
Business Administration	7,461	5,975	13,436
Computer Science & Info. Systems	0	0	0
Finance	0	1,015	1,015
Health Administration	0	577	577
Information Systems	0	890	890
International Business	0	112	112
Management and Organization	0	391	391
Management Science	0	45	45
Marketing	0	336	336
EDUCATION	284	7,989	8,273
Admin. Leadership and Policy Studies	0	659	659
Counseling Psych. and Counselor Educ.	0	1,630	1,630
Curriculum and Instruction	0	2,546	2,546
Early Childhood Education	0	414	414
Educational Leadership and Innovation	0	147	147
Educational Psychology	0	360	360
Elementary Education	178	307	485
Information and Learning Technologies	0	772	772
Reading	0	242	242
Rehabilitation Services	89	0	89
School Psychology	0	106	106
Secondary Education	17	279	296
Social Foundations	0	34	34
Special Education	0	493	493
ENGINEERING	4,260	1,505	5,765
Applied Mathematics	83	0	83
Civil Engineering	1,082	520	1,602
Computer Science	69	378	447
Computer Science and Engineering	612	0	612
Computer Science & Info. Systems	0	0	0
Electrical Engineering	1,539	359	1,898
Engineering	0	102	102
Mechanical Engineering	875	146	1,021

(continued)

**ALUMNI BY DEGREES
CUMULATIVE 1975-76 THROUGH 2004-05**

	<u>Undergraduate</u>	<u>Graduate</u>	<u>Total</u>
LIBERAL ARTS & SCIENCES	14,525	3,359	17,884
Anthropology	387	151	538
Applied Mathematics	0	263	263
Biology	1,602	180	1,782
Chemistry	352	103	455
Communication	719	44	763
Communication and Theatre	829	137	966
Communication Disorders Speech Science	0	30	30
Distributed Studies	88	0	88
Economics	1,154	346	1,500
English	813	228	1,041
English Writing Program	533	0	533
Environmental Sciences	0	191	191
Ethnic Studies	28	0	28
Fine Arts	536	0	536
French	152	0	152
Geography	191	8	199
Geology	281	0	281
German	72	0	72
Health and Behavioral Sciences	0	30	30
History	667	196	863
Humanities	0	228	228
Individually Structured Major	636	0	636
Master of Integrated Sciences	0	111	111
Mathematics	632	24	656
Music	364	0	364
Philosophy	233	0	233
Physics	91	0	91
Political Science	1,079	201	1,280
Population Dynamics	14	0	14
Psychology	2,187	400	2,587
Psychology-BS	109	0	109
Social Science	0	189	189
Sociology	551	142	693
Spanish	178	0	178
Technical Communication	0	149	149
Urban Studies	47	8	55
PUBLIC AFFAIRS		2,628	2,628
Criminal Justice		400	400
Public Administration		2,127	2,127
Public Affairs		101	101
MEDICINE	1,236	6,339	7,575
Analytic Health Sciences	0	31	31
Anatomy	0	8	8
Anesthesiology	0	1	1
Biochemistry	0	79	79
Biomedical Basic Sciences	0	77	77
Biometrics	0	83	83
Biophysics & Genetics	0	250	250
Cell & Developmental Biology	0	33	33
Clinical Science	0	9	9
	(continued)		
Experimental Pathology	0	30	30

**ALUMNI BY DEGREES
CUMULATIVE 1975-76 THROUGH 2004-05**

	<u>Undergraduate</u>	<u>Graduate</u>	<u>Total</u>
Health Administration	0	122	122
Laboratory Medicine	0	5	5
Masters in Physician Assistant Studies	33	322	355
Medical Laboratory Sciences	213	0	213
Medical Physics	0	72	72
Medical Science	285	0	285
Medical Technology	183	0	183
Medicine	0	3,773	3,773
Microbiology	0	13	13
Microbiology & Immunology	0	132	132
Neuroscience	0	23	23
Pathology	0	17	17
Pediatrics	0	8	8
Pharmacology	0	119	119
Physical Therapy	522	739	1,261
Physiology	0	24	24
Preventive Medicine	0	32	32
Public Health	0	305	305
Radiology	0	32	32
DENTISTRY	533	878	1,411
Dental Surgery	0	878	878
Dental Hygiene	533	0	533
NURSING	3,488	2,985	6,473
Nursing	3,488	2,985	6,473
PHARMACY	1,066	607	1,673
Pharmaceutical Sciences	0	28	28
Pharmacy	1,066	564	1,630
Toxicology	0	15	15
UCDHSC Total	33,497	39,439	72,936

Source:

University of Colorado at Denver Degrees Conferred Reports and Foundation Reports

Section IV.
Degree Data

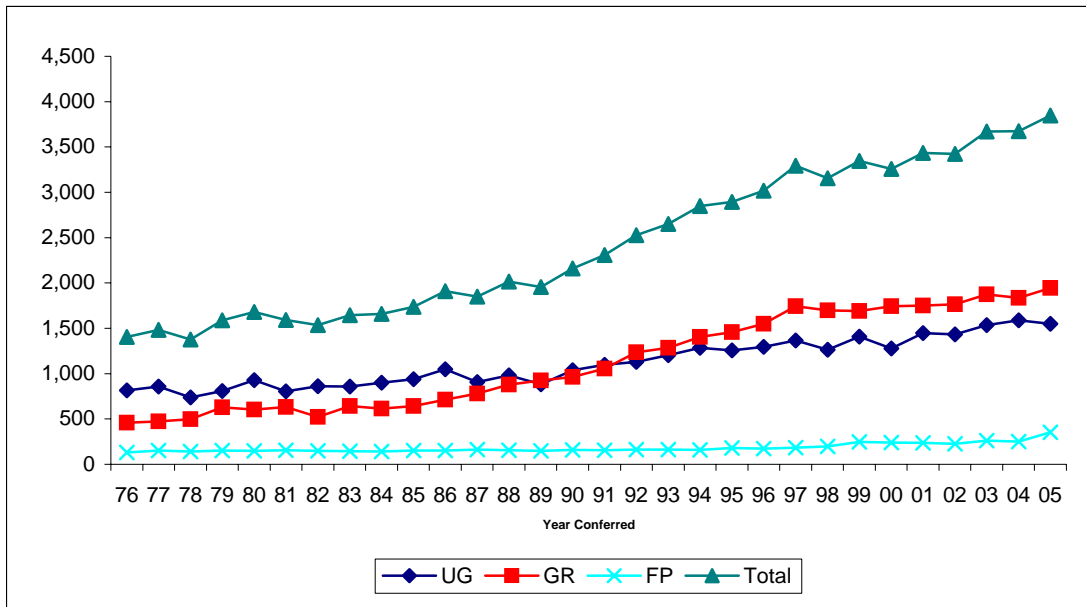
**CCHE Approved Degree Programs (2004-05 Academic Year)
DEGREES OFFERED BY SCHOOL/COLLEGE AND PROGRAM**

<u>School/ College</u>	<u>CIP 2000</u>	<u>CIP 1990</u>	<u>School/College/Program</u>	<u>Bachelor</u>	<u>Master</u>	<u>Doctorate</u>	<u>First Professional</u>	<u>Other</u>
COLLEGE OF ARCHITECTURE & PLANNING								
	04.0201	04.0201	Architecture		MARCH			
	04.0401	04.0401	Design and Planning			Ph.D.		
	04.0601	04.0601	Landscape Architecture		MLA			
	04.0301	04.0301	Urban and Regional Planning		MURP			
	04.0301	04.0701	Urban Design		MUD			
COLLEGE OF ARTS & MEDIA								
	50.0702	50.0701	Fine Arts	BA/BFA				
	50.0901	50.0901	Music	BS				
	50.9999	50.9999	Recording Arts		MS			
	50.0501	50.0501	Theatre, Film, & Television	BA/BFA				
COLLEGE OF BUSINESS								
	52.0301	52.0301	Accounting		MS			
	52.0201	52.0201	Business Administration	BS	MBA			
	11.0101	11.0101	Computer Science & Information Systems			Ph.D.		
	52.0801	52.0801	Finance		MS			
	51.0701	51.0701	Health Administration		MS			
	11.0401	11.0401	Information Systems		MS			
	52.1101	52.1101	International Business		MSIB			
	52.1003	52.1003	Management and Organization		MS			
	52.1401	52.1401	Marketing		MS			
COLLEGE OF LIBERAL ARTS & SCIENCES								
	45.0201	45.0201	Anthropology	BA	MA			
	27.0301	27.0301	Applied Mathematics		MS	Ph.D.		
	26.0101	26.0101	Biology	BS	MS			
	40.0501	40.0501	Chemistry	BS	MS			
	09.0101	09.0101	Communication	BA	MA			
	45.0601	45.0601	Economics	BA	MA			
	23.0101	23.0101	English	BA	MA			
	23.0401	23.0401	English Writing Program	BA				
	3.0104	03.0102	Environmental Sciences		MS			
	16.0901	16.0901	French	BA				
	45.0701	45.0701	Geography	BA				
	30.1701	30.9999	Health and Behavioral Science			Ph.D.		
	54.0101	45.0801	History	BA	MA			
	24.0103	24.0103	Humanities		MH			
	30.9999	30.9999	Individually Structured Major	BA				
	30.2001		International Studies	BA				
	30.0101	30.0101	Master of Integrated Sciences		MIS			
	27.0101	27.0101	Mathematics	BS				
	38.0101	38.0101	Philosophy	BA				
	40.0801	40.0801	Physics	BS				
	45.1001	45.1001	Political Science	BA	MA			
	42.0101	42.0101	Psychology	BA	MA			
	42.1101	42.1101	Psychology	BS				
	45.0101	45.0101	Social Science		MSS			
	45.1101	45.1101	Sociology	BA	MA			
	16.0905	16.0905	Spanish	BA	MA			
	23.1101	23.1101	Technical Communicator		MS			
SCHOOL OF EDUCATION								
	13.0401	13.0401	Administrative Leadership and Policy Studies		MA			ED.S
	13.1101	13.1101	Counseling Psychology and Counselor Education		MA			
	13.0301	13.0301	Curriculum and Instruction		MA			
	13.1210	13.1204	Early Childhood Education		MA			
	13.0401	13.0401	Educational Leadership and Innovation			Ph.D.		
	42.1801	13.0802	Educational Psychology		MA			
	25.0101	25.0101	Information and Learning Technologies		MA			
	42.1701	42.1701	School Psychology					ED.S
	13.1001	13.1001	Special Education		MA			
COLLEGE OF ENGINEERING & APPLIED SCIENCE								
	14.0801	14.0801	Civil Engineering	BS	MS	Ph.D.		
	11.0101	11.0101	Computer Science		MS			
	11.0101	11.0101	Computer Science & Information Systems			Ph.D.		
	11.0101	11.0701	Computer Science and Engineering	BS				
	14.1001	14.1001	Electrical Engineering	BS	MS			
	14.0101	14.0101	Engineering		MEng			
	14.1901	14.1901	Mechanical Engineering	BS	MS			
GRADUATE SCHOOL OF PUBLIC AFFAIRS								
	43.0103	43.0103	Criminal Justice		MCJ			
	44.0401	44.0401	Public Administration		MPA			
	44.0401	44.0401	Public Affairs			Ph.D.		
SCHOOL OF MEDICINE								
	26.1101		Analytic Health Sciences			Ph.D.		
	26.0202		Biochemistry			Ph.D.		
	26.0102		Biomedical Basic Sciences		MS			
	26.1101		Biometrics		MS			
	26.0203		Biophysics & Genetics		MS	Ph.D.		
	26.0406		Cell & Developmental Biology			Ph.D.		
	51.1401		Clinical Science		MSCS	Ph.D.		
	51.0912		Masters in Physician Assistant Studies		MPAS			
	26.0203		Medical Physics		MS			
	26.0102		Medical Science	BS				
	51.1201		Medicine					MD
	26.0599		Microbiology & Immunology			Ph.D.		
	30.2401		Neuroscience			Ph.D.		
	26.1001		Pharmacology			Ph.D.		
	51.2308		Physical Therapy		MS			DPT
	26.0901		Physiology			Ph.D.		
	51.2201		Public Health		MSPH			
SCHOOL OF DENTISTRY								
	51.0401		Dental Surgery					DDS
	51.0602		Dental Hygiene	BS				
SCHOOL OF NURSING								
	51.1601		Nursing	BS				DNP
	51.1602		Nursing		MS	Ph.D.		
SCHOOL OF PHARMACY								
	51.2004		Pharmaceutical Sciences			Ph.D.		
	51.2001		Pharmacy					PharmD
	26.1004		Toxicology			Ph.D.		

Notes: The degree program name for the Master of Basic Science was changed to Master of Integrated Sciences in 2002.
The Master of Arts in Biology was changed to a Master of Science effective May 2004.

Source: CCHE Approved Postsecondary Degree and Certificate Programs

DEGREES CONFERRED 1975-76 THROUGH 2004-05



Year	Bacc.	Master	Doctorate	Ed.S.	1st Professional	Total
1975-76	816	453	5		132	1,406
1976-77	857	463	9		153	1,482
1977-78	737	495	4		141	1,377
1978-79	808	621	7		153	1,589
1979-80	927	590	14		148	1,679
1980-81	806	620	11		154	1,591
1981-82	862	509	13		150	1,534
1982-83	856	616	27		144	1,643
1983-84	901	597	18		142	1,658
1984-85	940	617	25		153	1,735
1985-86	1,047	689	24		151	1,911
1986-87	907	760	19		164	1,850
1987-88	981	858	20		156	2,015
1988-89	883	882	43		149	1,957
1989-90	1,039	924	37	1	159	2,160
1990-91	1,096	1,012	38	5	157	2,308
1991-92	1,128	1,185	47	3	163	2,526
1992-93	1,204	1,218	59	7	162	2,650
1993-94	1,285	1,352	50	1	160	2,848
1994-95	1,256	1,408	49	1	181	2,895
1995-96	1,296	1,472	72	6	173	3,019
1996-97	1,366	1,667	75	3	183	3,294
1997-98	1,262	1,635	60	2	196	3,155
1998-99	1,408	1,607	77	6	247	3,345
1999-00	1,276	1,666	69	7	241	3,259
2000-01	1,448	1,650	69	32	236	3,435
2001-02	1,432	1,665	80	19	227	3,423
2002-03	1,534	1,784	73	16	262	3,669
2003-04	1,588	1,739	76	20	252	3,675
2004-05	1,551	1,834	75	34	354	3,848
Total	33,497	32,588	1,245	163	5,443	72,936

Source: CCHE Degrees Awarded Reports

**DEGREES CONFERRED BY GENDER
2004-05**

	Undergraduate			Graduate			First Professional			Total		
	Male	Female	Total	Male	Female	Total	Male	Female	Total	Male	Female	Total
ARCHITECTURE & PLANNING				97	88	185				97	88	185
Architecture				54	41	95				54	41	95
Design and Planning				0	2	2				0	2	2
Landscape Architecture				17	17	34				17	17	34
Urban and Regional Planning				21	22	43				21	22	43
Urban Design				5	6	11				5	6	11
ARTS & MEDIA	88	67	155	0	0	0				88	67	155
Fine Arts	4	19	23							4	19	23
Fine Arts-BFA	20	24	44							20	24	44
Music	50	9	59							50	9	59
Recording Arts						0				0	0	0
Theatre, Film, & Television-BA	1	5	6							1	5	6
Theatre, Film, & Television-BFA	13	10	23							13	10	23
BUSINESS	174	184	358	369	189	558				543	373	916
Accounting				23	14	37				23	14	37
Business Administration	174	184	358	244	120	364				418	304	722
Computer Science & Info. Systems						0				0	0	0
Finance				50	17	67				50	17	67
Health Administration				2	8	10				2	8	10
Information Systems				34	7	41				34	7	41
International Business				3	8	11				3	8	11
Management and Organization				4	5	9				4	5	9
Marketing				9	10	19				9	10	19
LIBERAL ARTS & SCIENCES	245	472	717	66	117	183				311	589	900
Anthropology	8	13	21	3	3	6				11	16	27
Applied Mathematics				6	3	9				6	3	9
Biology	21	51	72	2	7	9				23	58	81
Chemistry	6	7	13	2	1	3				8	8	16
Communication	33	88	121	2	7	9				35	95	130
Economics	38	58	96	11	6	17				49	64	113
English	7	23	30	4	13	17				11	36	47
English Writing Program	14	27	41							14	27	41
Environmental Sciences				11	11	22				11	11	22
French	1	5	6							1	5	6
Geography	11	2	13							11	2	13
Geology	1	2	3							1	2	3
German	2	3	5							2	3	5
Health and Behavioral Sciences				2	3	5				2	3	5
History	12	17	29	3	7	10				15	24	39
Humanities				4	11	15				4	11	15
Individually Structured Major	12	25	37							12	25	37
Master of Integrated Sciences				1	5	6				1	5	6
Mathematics	17	3	20							17	3	20
Philosophy	6	6	12							6	6	12
Physics	1	0	1							1	0	1
Political Science	21	37	58	9	11	20				30	48	78
Psychology	18	61	79	4	15	19				22	76	98
Psychology-BS	6	12	18							6	12	18
Social Science				0	4	4				0	4	4
Sociology	9	26	35	1	4	5				10	30	40
Spanish	1	6	7							1	6	7
Technical Communication				1	6	7				1	6	7
EDUCATION				82	451	533				82	451	533
Admin. Leadership and Policy Studies				13	36	49				13	36	49
Counseling Psych. and Counselor Educ.				12	42	54				12	42	54
Curriculum and Instruction				31	170	201				31	170	201
Early Childhood Education				1	33	34				1	33	34
Educational Leadership and Innovation				1	4	5				1	4	5
Educational Psychology				3	70	73				3	70	73
Information and Learning Technologies				15	49	64				15	49	64
School Psychology				0	22	22				0	22	22
Special Education				6	25	31				6	25	31
ENGINEERING	94	28	122	73	24	97				167	52	219
Civil Engineering	16	6	22	16	4	20				32	10	42
Computer Science				33	10	43				33	10	43
Computer Science & Info. Systems						0				0	0	0
Computer Science and Engineering	25	8	33							25	8	33
Electrical Engineering	35	6	41	13	3	16				48	9	57
Engineering				8	7	15				8	7	15
Mechanical Engineering	18	8	26	3	0	3				21	8	29
PUBLIC AFFAIRS				51	87	138				51	87	138
Criminal Justice				18	17	35				18	17	35
Public Administration				32	67	99				32	67	99
Public Affairs				1	3	4				1	3	4
Downtown Denver Total	601	751	1,352	738	956	1,694	0	0	0	1,339	1,707	3,046

**DEGREES CONFERRED BY GENDER
2004-05**

	Undergraduate			Graduate			First Professional			Total		
	Male	Female	Total	Male	Female	Total	Male	Female	Total	Male	Female	Total
MEDICINE	5	2	7	50	104	154	67	76	143	122	182	304
Analytic Health Sciences				0	2	2				0	2	2
Biochemistry				2	0	2				2	0	2
Biomedical Basic Sciences				3	4	7				3	4	7
Biometrics				0	2	2				0	2	2
Biophysics & Genetics				3	13	16				3	13	16
Cell & Developmental Biology				3	0	3				3	0	3
Clinical Science				3	2	5				3	2	5
Masters in Physician Assistant Studies				2	16	18				2	16	18
Medical Science	5	2	7							5	2	7
Medicine							63	63	126	63	63	126
Microbiology & Immunology				6	4	10				6	4	10
Neuroscience				3	0	3				3	0	3
Pharmacology				4	3	7				4	3	7
Physical Therapy				13	38	51	4	13	17	17	51	68
Physiology				1	0	1				1	0	1
Public Health				7	20	27				7	20	27
DENTISTRY	0	22	22				19	18	37	19	40	59
Dental Surgery							19	18	37	19	18	37
Dental Hygiene	0	22	22							0	22	22
NURSING	15	155	170	8	84	92	3	20	23	26	259	285
Nursing	15	155	170				3	20	23	18	175	193
Nursing				8	84	92				8	84	92
PHARMACY				0	3	3	41	110	151	41	113	154
Pharmaceutical Sciences				0	3	3				0	3	3
Pharmacy							41	110	151	41	110	151
Toxicology												0
Health Sciences Programs Total	20	179	199	58	191	249	130	224	354	208	594	802
UCDHC Total	621	930	1,551	796	1,147	1,943	130	224	354	1,547	2,301	3,848

Note: The degree program name for the Master of Basic Science was changed to Master of Integrated Sciences in 2002.

Source: CCHE Degrees Awarded Reports

DEGREES CONFERRED BY ETHNICITY 2004-05

	Undergraduate							Graduate							First Professional							
	Afr.		Nat.		NonRes.		Total	Afr.		Nat.		NonRes.		Total	Afr.		Nat.		NonRes.		Total	
	Asian	Amer.	Hisp.	Amer.	White ¹	Alien		Asian	Amer.	Hisp.	Amer.	White ¹	Alien		Asian	Amer.	Hisp.	Amer.	White ¹	Alien		
ARCHITECTURE & PLANNING								3	1	11	0	158	12	185								
Architecture								2	1	6	0	82	4	95								
Design and Planning								0	0	0	0	1	1	2								
Landscape Architecture								0	0	0	0	32	2	34								
Urban and Regional Planning								1	0	4	0	37	1	43								
Urban Design								0	0	1	0	6	4	11								
ARTS & MEDIA	10	2	12	1	127	3	155	0	0	0	0	0	0	0								
Fine Arts	3	2	1	0	17	0	23															
Fine Arts-BFA	4	0	2	1	36	1	44															
Music	1	0	8	0	49	1	59															
Recording Arts																						
Theatre, Film, & Television-BA	0	0	0	0	6	0	6															
Theatre, Film, & Television-BFA	2	0	1	0	19	1	23															
BUSINESS	51	14	44	2	217	30	358	37	4	28	0	435	54	558								
Accounting								3	1	1	0	29	3	37								
Business Administration	51	14	44	2	217	30	358	25	2	18	0	296	23	364								
Computer Science & Info. Systems														0								
Finance								5	0	4	0	50	8	67								
Health Administration								1	1	1	0	5	2	10								
Information Systems								2	0	1	0	28	10	41								
International Business								0	0	1	0	7	3	11								
Management and Organization								0	0	0	0	9	0	9								
Marketing								1	0	2	0	11	5	19								
LIBERAL ARTS & SCIENCES	52	24	63	11	457	110	717	4	5	11	1	150	12	183								
Anthropology	1	0	0	0	20	0	21	0	0	1	0	4	1	6								
Applied Mathematics								0	0	1	0	8	0	9								
Biology	16	2	7	2	43	2	72	1	0	1	0	7	0	9								
Chemistry	5	0	2	0	6	0	13	0	0	0	0	3	0	3								
Communication	6	6	16	0	68	25	121	0	0	0	0	7	2	9								
Economics	3	2	3	0	21	67	96	0	2	2	0	7	6	17								
English	1	0	0	1	27	1	30	0	0	0	0	17	0	17								
English Writing Program	3	0	4	1	33	0	41															
Environmental Sciences								0	0	3	1	17	1	22								
French	0	0	0	0	6	0	6															
Geography	0	1	0	0	12	0	13															
Geology	0	0	0	0	3	0	3															
German	0	1	0	0	4	0	5															
Health and Behavioral Sciences								0	0	0	0	5	0	5								
History	0	2	2	0	25	0	29	0	0	0	0	10	0	10								
Humanities								0	0	0	0	15	0	15								
Individually Structured Major	3	0	1	0	22	11	37															
Master of Integrated Sciences								1	1	0	0	4	0	6								
Mathematics	3	0	3	0	13	1	20															
Philosophy	1	0	2	1	7	1	12															
Physics	0	0	1	0	0	0	1															
Political Science	2	4	11	1	39	1	58	1	0	0	0	17	2	20								
Psychology	4	3	4	2	66	0	79	0	1	0	0	18	0	19								
Psychology-BS	1	0	0	1	15	1	18															
Social Science								0	1	1	0	2	0	4								
Sociology	3	2	5	1	24	0	35	1	0	2	0	2	0	5								
Spanish	0	1	2	1	3	0	7															
Technical Communication								0	0	0	0	7	0	7								

DEGREES CONFERRED BY ETHNICITY 2004-05

	Undergraduate							Graduate							First Professional							
	Afr. Asian	Afr. Amer.	Hisp.	Nat. Amer.	White ¹	NonRes. Alien	Total	Afr. Asian	Afr. Amer.	Hisp.	Nat. Amer.	White ¹	NonRes. Alien	Total	Afr. Asian	Afr. Amer.	Hisp.	Nat. Amer.	White ¹	NonRes. Alien	Total	
EDUCATION								6	7	42	1	468	9	533								
Admin. Leadership and Policy Studies								0	1	3	0	45	0	49								
Counseling Psych. and Counselor Educ.								1	1	2	0	50	0	54								
Curriculum and Instruction								3	1	29	0	163	5	201								
Early Childhood Education								0	2	1	0	29	2	34								
Educational Leadership and Innovation								0	0	1	0	4	0	5								
Educational Psychology								0	0	1	0	72	0	73								
Information and Learning Technologies								2	1	2	0	58	1	64								
School Psychology								0	0	2	0	19	1	22								
Special Education								0	1	1	1	28	0	31								
ENGINEERING	22	4	6	0	80	10	122	13	2	2	0	50	30	97								
Civil Engineering	1	0	0	0	21	0	22	2	0	0	0	17	1	20								
Computer Science								9	1	0	0	17	16	43								
Computer Science & Info. Systems																						
Computer Science and Engineering	9	1	1	0	19	3	33															
Electrical Engineering	9	3	3	0	22	4	41	1	1	1	0	4	9	16								
Engineering								1	0	0	0	10	4	15								
Mechanical Engineering	3	0	2	0	18	3	26	0	0	1	0	2	0	3								
PUBLIC AFFAIRS								4	5	9	3	105	12	138								
Criminal Justice								0	1	2	2	30	0	35								
Public Administration								4	4	7	1	72	11	99								
Public Affairs								0	0	0	0	3	1	4								
Downtown Denver Total	135	44	125	14	881	153	1,352	67	24	103	5	1,366	129	1,694	0	0	0	0	0	0	0	0
MEDICINE	0	0	1	0	6	0	7	10	0	12	1	121	10	154	10	4	14	0	115	0	143	
Analytic Health Sciences								0	0	0	0	1	1	2								
Biochemistry								1	0	0	0	0	1	2								
Biomedical Basic Sciences								0	0	1	0	6	0	7								
Biometrics								0	0	0	0	1	1	2								
Biophysics & Genetics								1	0	2	0	10	3	16								
Cell & Developmental Biology								0	0	0	0	3	0	3								
Clinical Science								1	0	0	0	4	0	5								
Masters in Physician Assistant Studies								1	0	1	0	16	0	18								
Medical Science	0	0	1	0	6	0	7															
Medicine															8	4	13	0	101	0	126	
Microbiology & Immunology								0	0	0	1	9	0	10								
Neuroscience								0	0	1	0	1	1	3								
Pharmacology								0	0	1	0	6	0	7								
Physical Therapy								4	0	4	0	42	1	51	2	0	1	0	14	0	17	
Physiology								0	0	0	0	0	1	1								
Public Health								2	0	2	0	22	1	27								
DENTISTRY	0	0	2	0	20	0	22	0	0	0	0	0	0	0	3	0	2	0	32	0	37	
Dental Surgery															3	0	2	0	32	0	37	
Dental Hygiene	0	0	2	0	20	0	22															
NURSING	8	7	12	2	141	0	170	2	4	5	0	78	3	92	1	0	0	0	22	0	23	
Nursing	8	7	12	2	141	0	170								1	0	0	0	22	0	23	
Nursing								2	4	5	0	78	3	92								
PHARMACY	0	0	0	0	0	0	0	0	0	0	0	1	2	3	29	10	9	1	101	1	151	
Pharmaceutical Sciences								0	0	0	0	1	2	3								
Pharmacy															29	10	9	1	101	1	151	
Toxicology																						
Health Sciences Programs Total	8	7	15	2	167	0	199	12	4	17	1	200	15	249	43	14	25	1	270	1	354	
UCDHSC Total	143	51	140	16	1,048	153	1,551	79	28	120	6	1,566	144	1,943	43	14	25	1	270	1	354	

Notes:

1. Students with unknown ethnicity are included under "White" count.
2. The degree program name for the Master of Basic Science was changed to Master of Integrated Sciences in 2002.

**DEGREES CONFERRED BY SCHOOL/COLLEGE
2000-01 THROUGH 2004-05**

CIP Code 2000	2000-01					2001-02					2002-03					2003-04					2004-05				
	B	M	Ed S	D	1st Prof	B	M	Ed S	D	1st Prof	B	M	Ed S	D	1st Prof	B	M	Ed S	D	1st Prof	B	M	Ed S	D	1st Prof
MEDICINE	16	113	0	30	128	5	84	0	29	126	5	96	0	29	132	6	101	0	34	113	7	113	0	41	143
26.1101 Analytic Health Sciences				5					2					6					2						2
26.0202 Biochemistry				4					2					2					2						2
26.0102 Biomedical Basic Sciences		13					6					2					8					7			
26.1101 Biometrics		7					5					2					2					2			
26.0203 Biophysics & Genetics		8		2			8		4			7		3			6		5			8		8	
26.0406 Cell & Developmental Biology				1					4					2					2					3	
51.1401 Clinical Science				1										1					2					5	
26.0910 Experimental Pathology				2					2					3					1						
51.0912 Masters in Physician Assistant Studies		2					8					19					22					18			
26.0203 Medical Physics		4					2					2													
26.0102 Medical Science	16						5					5					6					7			
51.1201 Medicine					128					126					132						113				126
26.0599 Microbiology & Immunology				9					7					4					11						10
30.2401 Neuroscience				3					2					3					3						3
26.1001 Pharmacology				3					6					5					6						7
51.2308 Physical Therapy		55					35					42					42					51			17
26.0901 Physiology																								1	
51.2201 Public Health		24					20					22					21					27			
DENTISTRY	19	0	0	0	37	19	0	0	0	32	19	0	0	0	35	21	0	0	0	40	22	0	0	0	37
51.0401 Dental Surgery					37					32					35					40					37
51.0602 Dental Hygiene	19					19					19					21					22				
NURSING	81	68	0	8	22	88	64	0	9	21	126	71	0	6	15	174	82	0	5	17	170	82	0	10	23
51.1601 Nursing	81				22	88			9	21	126			6	15	174			5	17	170			10	23
51.1602 Nursing		68		8			64		9			71		6			82		5			82		10	
PHARMACY	70	0	0	2	49	3	0	0	3	48	0	0	0	6	80	0	0	0	4	82	0	0	0	3	151
51.2004 Pharmaceutical Sciences				1					1					5										3	
51.2001 Pharmacy	70				49	3				48					80										151
26.1004 Toxicology				1					2					1					4						
Health Sciences Programs Total	186	181	0	40	236	115	148	0	41	227	150	167	0	41	262	201	183	0	43	252	199	195	0	54	354
UCDHC Total	1,448	1,650	32	69	236	1,432	1,665	19	80	227	1,534	1,784	16	73	262	1,588	1,739	20	76	252	1,551	1,834	34	75	354

Notes:

1. The degree program name for the Master of Basic Science was changed to Master of Integrated Sciences in 2002.
2. The degree program name for the doctorate in Public Administration was changed to Public Affairs in 1999.

Source: CCHE Degrees Awarded Reports

Section V.
Faculty Data

**FULL-TIME INSTRUCTIONAL FACULTY
2005-2006**

DISTRIBUTION BY GENDER

<u>School/College</u>	<u>Male</u>		<u>Female</u>		<u>Total</u>
	<u>N</u>	<u>%</u>	<u>N</u>	<u>%</u>	<u>N</u>
Architecture and Planning-Combined¹	29	70.73%	12	29.27%	41
Architecture and Planning-Denver	21	70.00%	9	30.00%	30
Architecture and Planning-Boulder	8	72.73%	3	27.27%	11
Arts and Media	31	64.58%	17	35.42%	48
Business	41	66.13%	21	33.87%	62
Liberal Arts and Sciences	122	62.24%	74	37.76%	196
Education	15	32.61%	31	67.39%	46
Engineering	33	86.84%	5	13.16%	38
Public Affairs	11	68.75%	5	31.25%	16
TOTAL Downtown Denver Campus	282	63.09%	165	36.91%	447
Dentistry	31	72.09%	12	27.91%	43
Medicine	784	54.18%	663	45.82%	1447
Nursing	3	5.77%	49	94.23%	52
Pharmacy	22	70.97%	9	29.03%	31
TOTAL Health Sciences Campus	840	53.40%	733	46.60%	1573
TOTAL UCDHSC	1122	55.54%	898	44.46%	2020

DISTRIBUTION BY HIGHEST DEGREE AWARDED

<u>School/College</u>	<u>Other or Unknown</u>		<u>Bachelor</u>		<u>Master</u>		<u>Doctorate</u>		<u>Total</u>
	<u>N</u>	<u>%</u>	<u>N</u>	<u>%</u>	<u>N</u>	<u>%</u>	<u>N</u>	<u>%</u>	<u>N</u>
Architecture and Planning-Combined¹	0	0.00%	2	4.88%	25	60.98%	14	34.15%	41
Architecture and Planning-Denver	0	0.00%	2	6.67%	19	63.33%	9	30.00%	30
Architecture and Planning-Boulder	0	0.00%	0	0.00%	6	54.55%	5	45.45%	11
Arts and Media	3	6.25%	3	6.25%	34	70.83%	8	16.67%	48
Business	0	0.00%	0	0.00%	11	17.74%	51	82.26%	62
Liberal Arts and Sciences	1	0.51%	1	0.51%	33	16.84%	161	82.14%	196
Education	0	0.00%	0	0.00%	3	6.52%	43	93.48%	46
Engineering	1	2.63%	0	0.00%	4	10.53%	33	86.84%	38
Public Affairs	0	0.00%	0	0.00%	0	0.00%	16	100.00%	16
TOTAL Downtown Denver Campus	5	1.12%	6	1.34%	110	24.61%	326	72.93%	447
Dentistry	0	0.00%	1	2.33%	6	13.95%	36	83.72%	43
Medicine	251	17.35%	35	2.42%	161	11.13%	1000	69.11%	1447
Nursing	0	0.00%	0	0.00%	19	36.54%	33	63.46%	52
Pharmacy	0	0.00%	0	0.00%	0	0.00%	31	100.00%	31
TOTAL Health Sciences Campus	251	15.96%	36	2.29%	186	11.82%	1100	69.93%	1573
TOTAL UCDHSC	256	12.67%	42	2.08%	296	14.65%	1426	70.59%	2020

Notes:

1. Some faculty split time between Denver & Boulder.
2. Excludes Deans and Associate Deans.
3. Data as of November 1, 2005.

Source:

Faculty Data File, Office of Institutional Research, Planning & Analysis

**FULL-TIME INSTRUCTIONAL FACULTY
2005-2006**

DISTRIBUTION BY TENURE STATUS

<u>School/College</u>	<u>Non-Tenure Track</u>		<u>Tenure Track</u>		<u>Tenured</u>		<u>Clinical Track</u>		<u>Total</u>	<u>% Tenured</u>
	<u>Male</u>	<u>Female</u>	<u>Male</u>	<u>Female</u>	<u>Male</u>	<u>Female</u>	<u>Male</u>	<u>Female</u>		
Architecture and Planning-Combined¹	11	4	3	3	15	5			41	48.78%
Architecture and Planning-Denver	7	3	2	3	12	3			30	50.00%
Architecture and Planning-Boulder	4	1	1	0	3	2			11	45.45%
Arts and Media	15	9	7	5	9	3			48	25.00%
Business	11	8	5	3	25	10			62	56.45%
Liberal Arts and Sciences	36	31	25	11	61	32			196	47.45%
Education	1	13	4	7	10	11			46	45.65%
Engineering	5	0	6	1	22	4			38	68.42%
Public Affairs	0	0	2	2	9	3			16	75.00%
TOTAL Downtown Denver Campus	79	65	52	32	151	68	0	0	447	48.99%
Dentistry	0	0	0	1	18	3	13	8	43	48.84%
Medicine	160	304	425	322	199	37	0	0	1447	16.31%
Nursing	0	1	3	8	0	18	0	22	52	34.62%
Pharmacy	0	0	8	7	14	2	0	0	31	51.61%
TOTAL Health Sciences Campus	160	305	436	338	231	60	13	30	1573	18.50%
TOTAL UCDHSC	239	370	488	370	382	128	13	30	2020	25.25%

DISTRIBUTION BY RANK

<u>School/College</u>	<u>Professor</u>		<u>Assoc. Professor</u>		<u>Asst. Professor</u>		<u>Sr Instructor/ Instructor</u>		<u>Total</u>
	<u>Male</u>	<u>Female</u>	<u>Male</u>	<u>Female</u>	<u>Male</u>	<u>Female</u>	<u>Male</u>	<u>Female</u>	
Architecture and Planning-Combined¹	7	2	8	3	3	3	11	4	41
Architecture and Planning-Denver	5	2	7	1	2	3	7	3	30
Architecture and Planning-Boulder	2	0	1	2	1	0	4	1	11
Arts and Media	3	1	6	2	7	5	15	9	48
Business	16	4	10	6	4	3	11	8	62
Liberal Arts and Sciences	30	11	33	21	23	11	36	31	196
Education	6	1	4	11	4	6	1	13	46
Engineering	13	2	9	2	6	1	5	0	38
Public Affairs	8	0	1	3	2	2	0	0	16
TOTAL CU-Denver	83	21	71	48	49	31	79	65	447
Dentistry	14	2	15	6	2	3	0	1	43
Medicine	245	59	184	120	196	187	159	297	1447
Nursing	0	10	1	10	2	7	0	22	52
Pharmacy	10	0	4	2	8	7	0	0	31
TOTAL Health Sciences Campus	269	71	204	138	208	204	159	320	1573
TOTAL UCDHSC	352	92	275	186	257	235	238	385	2020

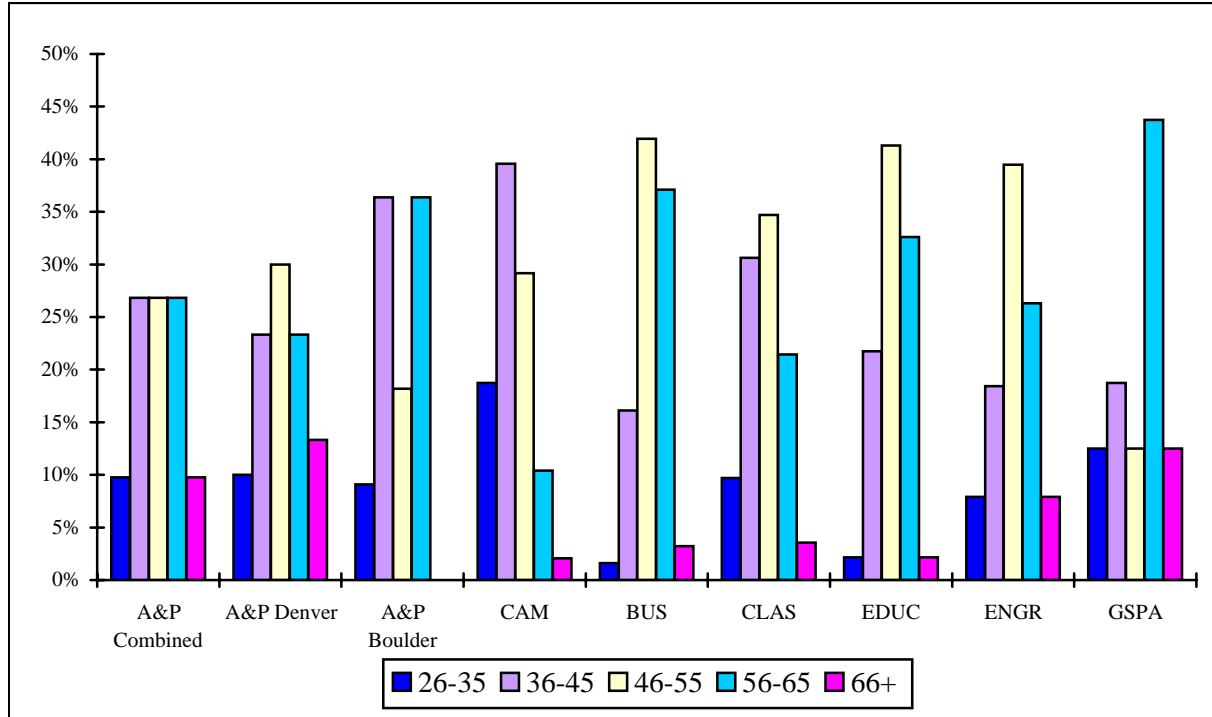
Notes:

1. Some faculty split time between Denver & Boulder.
2. Excludes Deans and Associate Deans.
3. Data as of November 1, 2005.

Source:

Faculty Data File, Office of Institutional Research, Planning & Analysis

**FULL-TIME INSTRUCTIONAL FACULTY
DISTRIBUTION BY AGE
DOWNTOWN DENVER CAMPUS**



<u>School/College</u>	<u>% 26-35</u>	<u>% 36-45</u>	<u>% 46-55</u>	<u>% 56-65</u>	<u>% 66+</u>
Architecture and Planning-Combined¹	10%	27%	27%	27%	10%
Architecture and Planning-Denver	10%	23%	30%	23%	13%
Architecture and Planning-Boulder	9%	36%	18%	36%	0%
Arts and Media	19%	40%	29%	10%	2%
Business	2%	16%	42%	37%	3%
Liberal Arts and Sciences	10%	31%	35%	21%	4%
Education	2%	22%	41%	33%	2%
Engineering	8%	18%	39%	26%	8%
Public Affairs	13%	19%	13%	44%	13%
TOTAL Downtown Denver Campus	8%	26%	35%	26%	4%

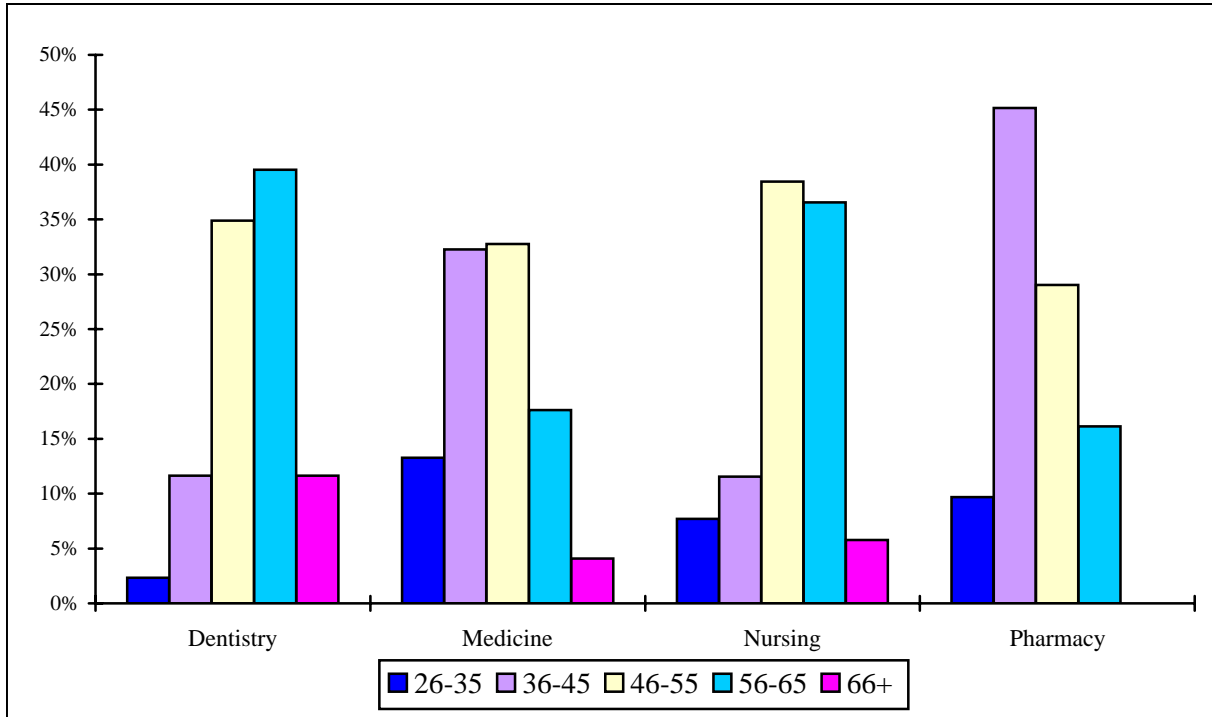
Notes:

1. Some faculty split time between Denver & Boulder.
2. Excludes Deans and Associate Deans.
3. Data as of November 1, 2005.

Source:

Faculty Data File, Office of Institutional Research, Planning & Analysis

**FULL-TIME INSTRUCTIONAL FACULTY
DISTRIBUTION BY AGE
HEALTH SCIENCES CAMPUS**



<u>School/College</u>	<u>%</u> <u>26-35</u>	<u>%</u> <u>36-45</u>	<u>%</u> <u>46-55</u>	<u>%</u> <u>56-65</u>	<u>%</u> <u>66+</u>
Dentistry	2%	12%	35%	40%	12%
Medicine	13%	32%	33%	18%	4%
Nursing	8%	12%	38%	37%	6%
Pharmacy	10%	45%	29%	16%	0%
TOTAL Health Sciences Campus	13%	31%	33%	19%	4%
TOTAL UCDHSC	12%	30%	34%	20%	4%

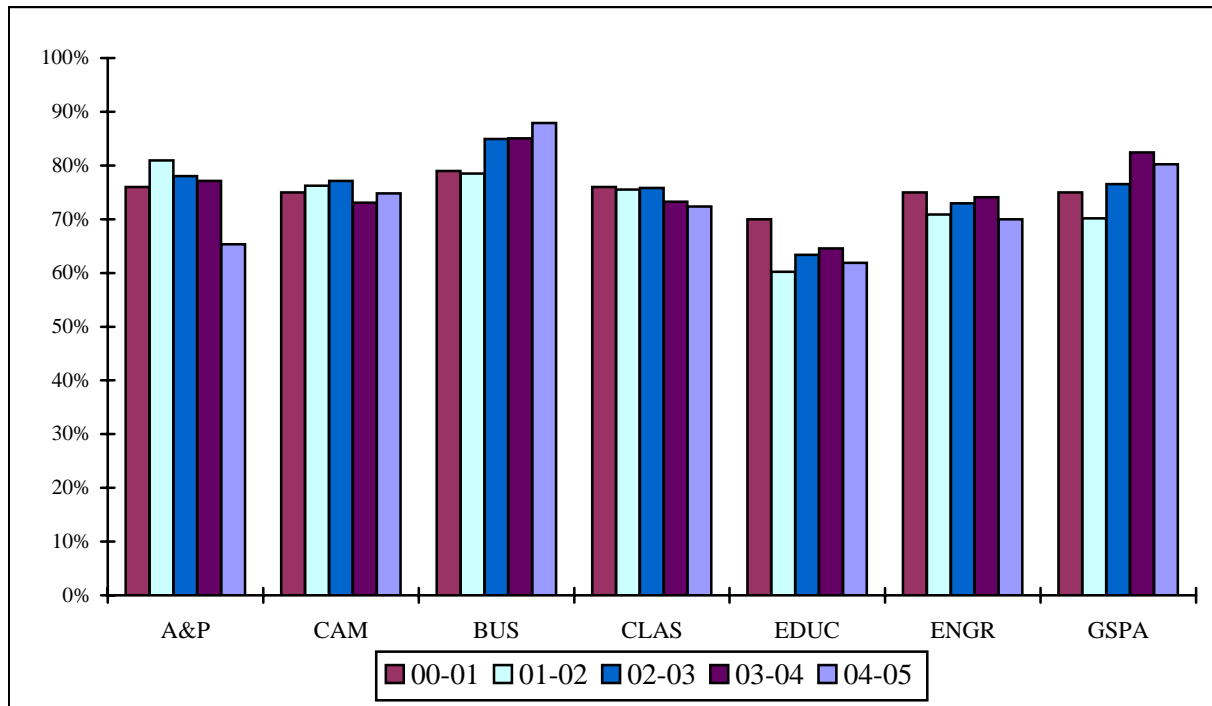
Notes:

1. Some faculty split time between Denver & Boulder.
2. Excludes Deans and Associate Deans.
3. Data as of November 1, 2005.

Source:

Faculty Data File, Office of Institutional Research, Planning & Analysis

**PERCENT FULL-TIME INSTRUCTIONAL FACULTY
2000-01 THROUGH 2004-05**



<u>School/College</u>	<u>FY 00-01</u>	<u>FY 01-02</u>	<u>FY 02-03</u>	<u>FY 03-04</u>	<u>FY 04-05</u>
Architecture and Planning-Denver ¹	76%	81%	78%	77%	65%
Arts and Media	75%	76%	77%	73%	75%
Business	79%	78%	85%	85%	88%
Liberal Arts and Sciences	76%	75%	76%	73%	72%
Education	70%	60%	63%	65%	62%
Engineering	75%	71%	73%	74%	70%
Public Affairs	75%	70%	77%	82%	80%
TOTAL Downtown Denver Campus	75%	73%	75%	74%	73%

Notes:

1. Architecture & Planning does not include faculty for the undergraduate Environmental Design program taught in Boulder.

Source:

Prior to 00-01, Budget Office FTE Faculty Reports
After 00-01, Institutional Research FY Clear All report

**FTE INSTRUCTIONAL FACULTY
2000-01 THROUGH 2004-05**

	<u>2000-01</u>	<u>2001-02</u>	<u>2002-03</u>	<u>2003-04</u>	<u>2004-05</u>
ARCHITECTURE AND PLANNING¹	37.65	36.09	38.25	35.98	39.99
ARTS AND MEDIA	44.78	46.85	57.30	54.04	59.05
BUSINESS	75.02	73.63	78.89	75.63	77.11
LIBERAL ARTS AND SCIENCES	235.98	251.25	254.56	246.25	251.23
Anthropology	8.47	11.02	9.41	9.18	10.86
Biology	17.81	19.20	18.28	17.34	19.61
Chemistry	13.35	12.38	13.30	13.96	12.04
Communication	16.33	18.60	20.34	18.05	17.95
Economics	12.00	13.28	12.88	13.40	13.59
English	29.77	31.07	33.13	32.27	35.06
Environmental Sciences	2.59	3.26	2.46	3.65	3.77
Ethnic Studies	1.12	1.59	2.52	2.11	2.59
French	4.00	4.17	4.24	3.10	3.32
Geography	5.01	5.27	5.16	5.77	5.75
Geology	4.43	3.79	3.86	3.57	3.10
German	2.30	2.33	2.39	2.00	1.97
Health and Behavioral Sciences	3.35	3.34	3.66	3.87	4.02
History	12.14	13.22	13.44	13.13	14.55
Humanities	2.97	1.66	1.85	2.43	2.24
Interdisciplinary	3.11	2.55	1.88	2.65	1.89
Mathematics	29.50	31.28	31.45	31.94	32.07
Modern Languages	2.79	2.40	2.60	0.97	1.05
Philosophy	10.49	11.44	11.58	10.91	10.25
Physics	8.40	8.24	9.54	8.70	8.01
Political Science	12.72	12.56	13.20	12.58	11.97
Psychology	15.91	17.31	16.50	15.92	17.31
Sociology	8.21	9.08	8.86	9.25	8.96
Spanish	9.21	12.21	12.03	9.50	9.30
EDUCATION	71.88	81.85	82.93	82.44	83.43
ENGINEERING	55.53	58.33	53.69	54.75	50.14
Civil Engineering	17.03	17.27	15.22	15.65	15.80
Computer Science	16.15	17.66	17.97	18.84	15.43
Electrical Engineering	11.16	11.53	10.37	10.40	10.23
Mechanical Engineering	11.19	11.87	10.13	9.86	8.68
PUBLIC AFFAIRS	17.39	19.57	19.48	20.20	19.55
TOTAL Downtown Denver Campus	538.23	567.57	585.10	569.29	580.50

Notes:

1. Architecture & Planning does not include students from the undergraduate Environmental Design programs taught in Boulder.

Source:

Prior to 00-01, Budget Office FTE Faculty Reports
After 00-01, Institutional Research FY Clear All report

**STUDENT/FACULTY RATIOS
BY SCHOOL/COLLEGE AND DEPARTMENT
2000-01 THROUGH 2004-05**

	<u>2000-01</u>	<u>2001-02</u>	<u>2002-03</u>	<u>2003-04</u>	<u>2004-05</u>
ARCHITECTURE AND PLANNING¹	9.09	9.35	9.44	10.94	11.22
ARTS AND MEDIA	11.74	12.45	11.88	13.75	13.88
BUSINESS	19.49	20.75	20.39	20.75	19.08
LIBERAL ARTS AND SCIENCES	15.63	15.44	16.08	17.04	17.72
Anthropology	17.89	14.09	17.23	18.40	14.38
Biology	15.89	14.55	18.08	21.60	20.19
Chemistry	16.38	16.56	17.70	18.07	20.72
Communication	16.01	16.61	16.66	18.55	18.56
Economics	18.90	18.55	19.33	19.34	19.40
English	14.57	14.44	14.49	15.59	16.25
French	9.53	11.29	10.59	9.48	11.51
Geography	11.06	11.37	12.91	13.85	14.75
Geology	7.74	10.00	10.44	11.90	12.42
German	12.39	12.40	11.80	12.00	14.62
History	14.82	14.11	14.32	15.83	17.15
Mathematics	14.21	14.26	14.68	13.94	13.31
Philosophy	19.40	18.83	18.33	19.00	20.55
Physics	21.20	22.90	18.06	21.03	24.19
Political Science	13.00	15.29	15.39	17.31	19.29
Psychology	20.89	19.49	20.63	23.05	24.29
Sociology	22.25	21.45	24.72	26.48	29.96
Spanish	16.54	13.55	14.75	12.67	13.59
EDUCATION	10.07	9.78	10.88	11.63	11.12
ENGINEERING	11.69	9.87	10.66	9.74	10.04
PUBLIC AFFAIRS	9.81	9.18	9.34	8.63	8.41
TOTAL Downtown Denver Campus	14.07	13.91	14.37	15.07	15.14

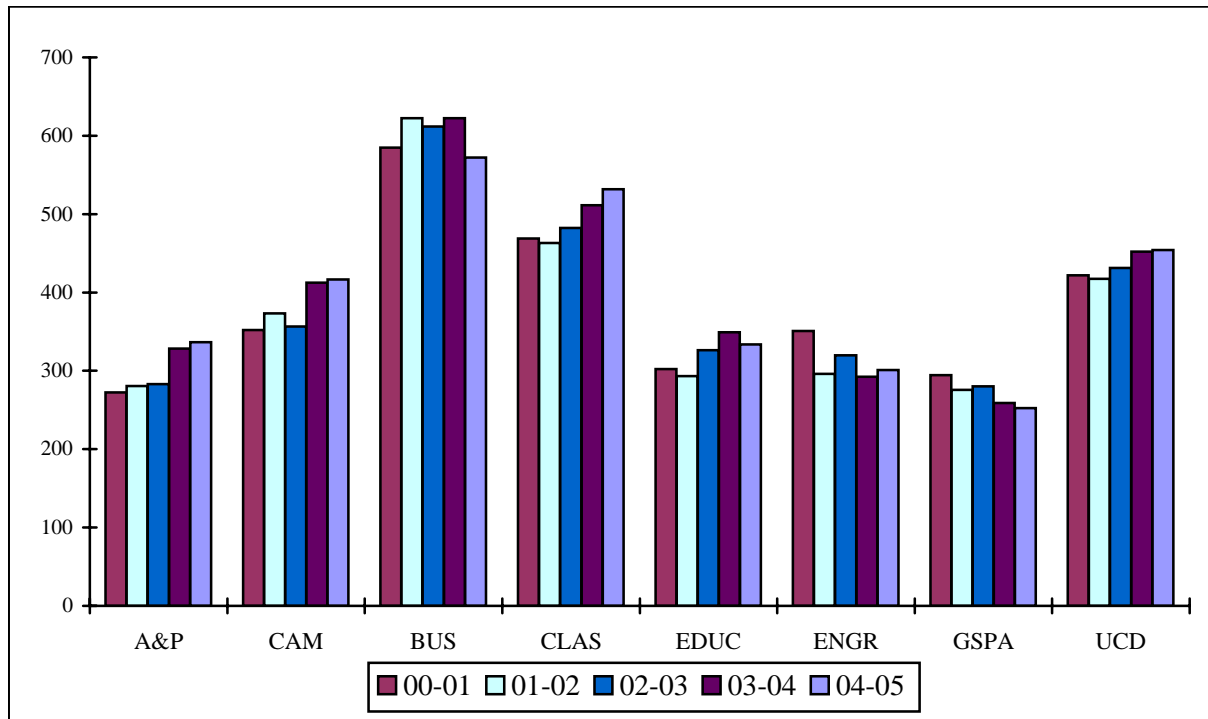
Notes:

1. Architecture & Planning does not include students from the undergraduate programs taught in Boulder.

Source:

FTEF from Student Section of this report divided by FTEF from previous page.
Office of Institutional Research, Planning and Analysis

**STUDENT CREDIT HOURS PER FTE FACULTY BY SCHOOL
2000-01 THROUGH 2004-05**



	<u>FY</u> <u>00-01</u>	<u>FY</u> <u>01-02</u>	<u>FY</u> <u>02-03</u>	<u>FY</u> <u>03-04</u>	<u>FY</u> <u>04-05</u>
Architecture and Planning-Denver¹	272.6	280.4	283.1	328.3	336.6
Arts and Media	352.2	373.4	356.5	412.5	416.5
Business	584.6	622.5	611.7	622.5	572.3
Liberal Arts and Sciences	468.9	463.3	482.3	511.3	531.6
Education	302.0	293.4	326.4	349.0	333.5
Engineering	350.7	296.2	319.7	292.3	301.1
Public Affairs	294.3	275.5	280.1	258.9	252.3
TOTAL Downtown Denver Campus	422.0	417.2	431.1	452.1	454.1

Notes:

1. Architecture & Planning does not include faculty for the undergraduate program in Boulder.

Source:

Prior to 00-01, Budget Office FTE Faculty Reports

After 00-01, Institutional Research FY Clear All report

Section VI.
Financial Data

FINANCIAL AID AWARDS 2004-05

	No. of Recipients 2004-05	Awards in \$ 2004-05
<u>FEDERAL GRANTS</u>		
Pell	2,023	5,132,321
Graduate Research Traineeships	540	2,423,137
Armed Services Scholarships	42	856,896
SEOG	163	334,802
Schol to Disadvantaged Students	33	243,634
CSIG/CLEAP/SLEAP	131	119,271
BIA/Indian Fellowship	17	57,898
National Health Service Scholarship	2	39,211
Indian Health Service	1	7,296
 Sub-Total Federal Grant	 2,952	 9,214,466
<u>STATE GRANTS</u>		
Colorado Student Grant	1,235	2,018,160
Grad Need	329	562,048
Governor's Opportunity Scholarship	77	542,959
Undergraduate Merit	416	402,949
Colorado Fellowship	39	60,100
 Sub-Total State Grant	 2,096	 3,586,216
<u>INSTITUTIONAL AWARDS</u>		
CU - Denver Need-Based Aid	906	1,115,051
Virginia T. Schuman Scholarship	108	302,555
Advantage Scholarship	89	295,808
Albertson's Scholarship	27	282,744
Chancellor's Diversity Scholarship	87	191,931
Orthodontic Education Comp	11	153,219
Cheley Scholarship	69	126,800
CU - HSC Need Grant	65	125,302
Displaced Aurarians	27	103,942
Chancellor's Scholars & Leaders	51	101,500
McClymonds Scholarship	47	95,300
Urban Scholarship	43	45,972
ARCS Scholarship	9	45,000
Williams Family Foundation	6	44,000
Adler Scholarship	6	42,000
Chancellor's Scholarship	36	34,250
Whitehead Scholarship	7	29,000
School of Pharmacy Scholarship	25	26,200
Employee Waiver	25	25,754
Helene Fuld Health Trust	12	25,000
Sutley Scholarship	11	23,000
Employee - Spouse/Child Scholarship	28	21,392
Arnold	16	19,750
Harry Paul Scholarship	8	19,000
Nelson/Running Wolf	19	18,600
Campbell Scholarship	6	11,500

FINANCIAL AID AWARDS 2004-05

	No. of Recipients 2004-05	Awards in \$ 2004-05
(continued)		
Bruce Tidwell Scholarship	5	11,000
Theresa McMahan Scholarship	1	10,794
Dean's Scholarship	5	10,000
Timpte-Brownlie Scholarship	4	10,000
O'Kelley Scholarship	2	9,000
Benjamin Brown Int'l Research	1	8,852
Medical School Scholarship	3	7,000
Judith Albino Scholarship	4	6,200
Mary Mercer Fund	2	6,000
Medical Center Student Scholarship	4	5,254
Colorado Medical Society Scholarship	1	5,000
Bakemeier Scholarship	2	4,000
Class of 1932 Scholarship	1	4,000
C&L Hartman Scholarship	2	3,000
CU - HSC Endowment	3	3,000
Dora Wright Scholarship	2	3,000
EgLee Scholarship	3	3,000
Miles Markley Scholarship	2	3,000
Schl of Denistry Alumni Scholarship	6	3,000
Ahlin	4	2,771
Rutherford Scholarship	1	2,500
Callaway Scholarship	1	2,000
Pearl Coulter Scholarship	1	2,000
Rudolph Deluise Achievement	1	2,000
Willard Smith Scholarship	1	2,000
Carrie Stark Scholarship	1	1,500
CU Faculty/Staff Scholarship	2	1,500
Gottsfeld Memorial Award	1	1,200
Hoyt Parker Scholarship	1	1,200
Coalition (formerly Elway)	3	1,125
40/8 Voiture 97 Scholarship	1	1,000
General Nursing Scholarship	1	1,000
Rose McKay Scholarship	1	1,000
Robert Glaser Award	1	700
Pediatric Dentistry	1	500
Stan Ladd Scholarship	1	500
 Sub-Total Institutional Awards	 1,820	 3,464,166
<u>LOANS</u>		
Stafford Loan	7,668	66,641,206
Unsubsidized Stafford Loan	1,575	21,426,736
Perkins Loan	982	2,283,262
PLUS/SLS	179	1,393,762
Undergraduate Federal Nursing Loan	65	251,607
Loan to Disadvantaged Students	24	245,448
L.H. Fahrenbrink Loan	44	88,200

FINANCIAL AID AWARDS 2004-05

	No. of Recipients 2004-05	Awards in \$ 2004-05
(continued)		
Graduate Federal Nursing Loan	41	79,400
Health Professions Loan	6	69,235
Medical Center Loan	29	65,850
Francis McNaught Loan	18	37,100
Regent's Loan	13	32,050
Kellogg Loan	4	12,000
V.R. Boynton Loan	5	9,800
George Wright Loan	9	9,000
Centennial Loan	4	8,400
R.W. Johnson Loan	2	4,200
 Sub-Total Loan	 10,668	 92,657,256
<u>WORK PROGRAMS</u>		
Federal Work-Study	408	1,257,159
Colorado Work-Study	166	529,338
Colorado No Need Work-Study	26	98,498
 Sub-Total Work	 600	 1,884,995
 Grand Total	 18,136	 110,807,099

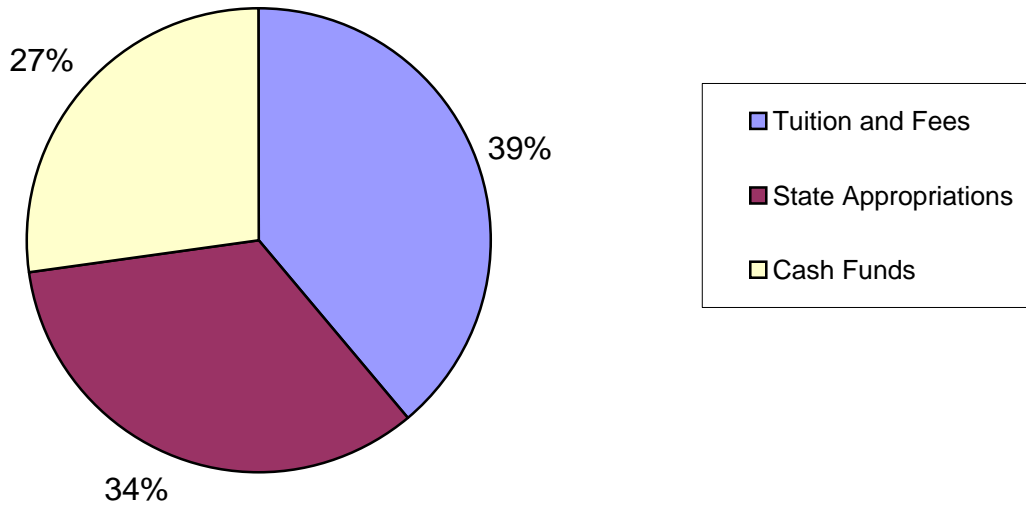
Source: Office of Financial Aid

**REVENUE AND EXPENDITURES
STATE APPROPRIATIONS
FISCAL YEAR 2004-05**

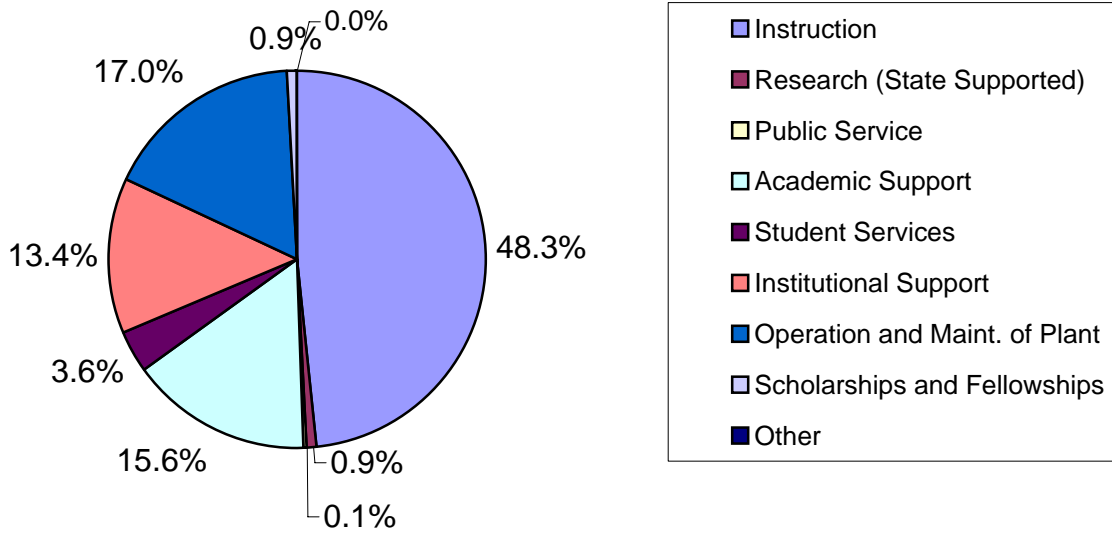
<u>REVENUE</u>	FY 2004-2005
Tuition and Fees	\$90,642,529
State Appropriations	\$78,497,352
Cash Funds	\$63,487,623
Total Revenue	\$232,627,504
<u>EXPENDITURES</u>	
Instruction	\$97,409,274
Research (State Supported)	\$1,905,779
Public Service	\$276,315
Academic Support	\$31,466,043
Student Services	\$7,188,078
Institutional Support	\$27,037,004
Operation and Maint. of Plant	\$34,322,878
Scholarships and Fellowships	\$1,884,948
Other	\$72,867
Total Expenditures	\$201,563,185

Source: Financial Statement, University of Colorado at Denver

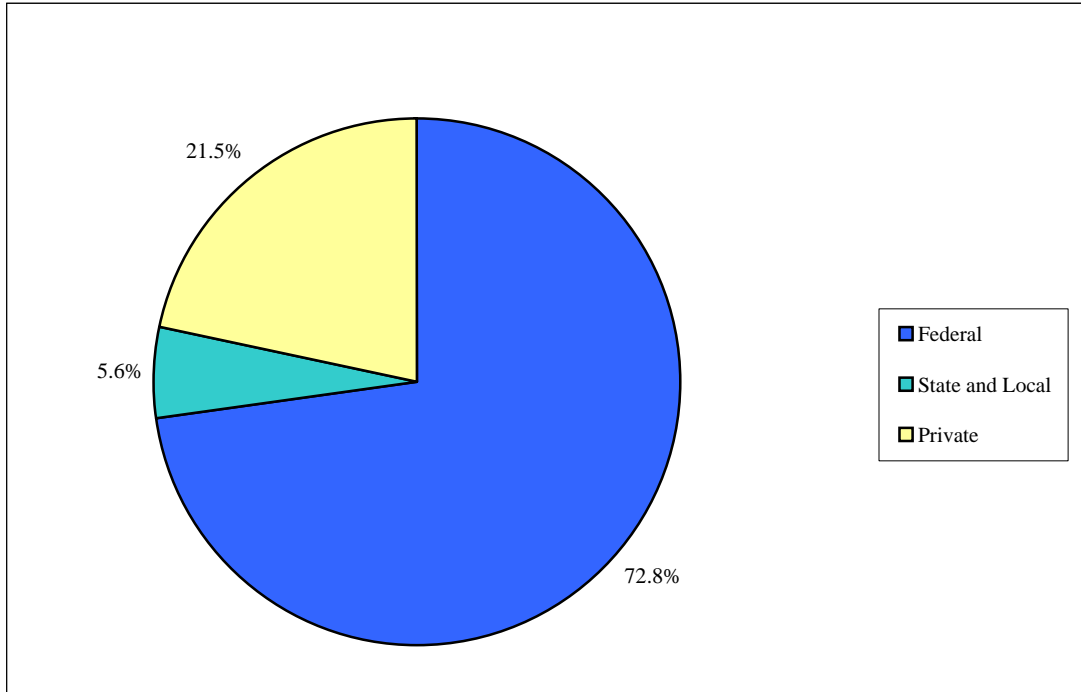
REVENUE UCDHSC FY 2004-05



EXPENDITURES UCDHSC FY 2004-05



**CONTRACT AND GRANT AWARDS BY FUNDING SOURCE
FISCAL YEAR 2004-05**



Federal	72.8%	\$265,115,656
State and Local	5.6%	\$20,476,895
Private	21.5%	\$78,401,299
TOTAL	100.0%	\$363,993,850

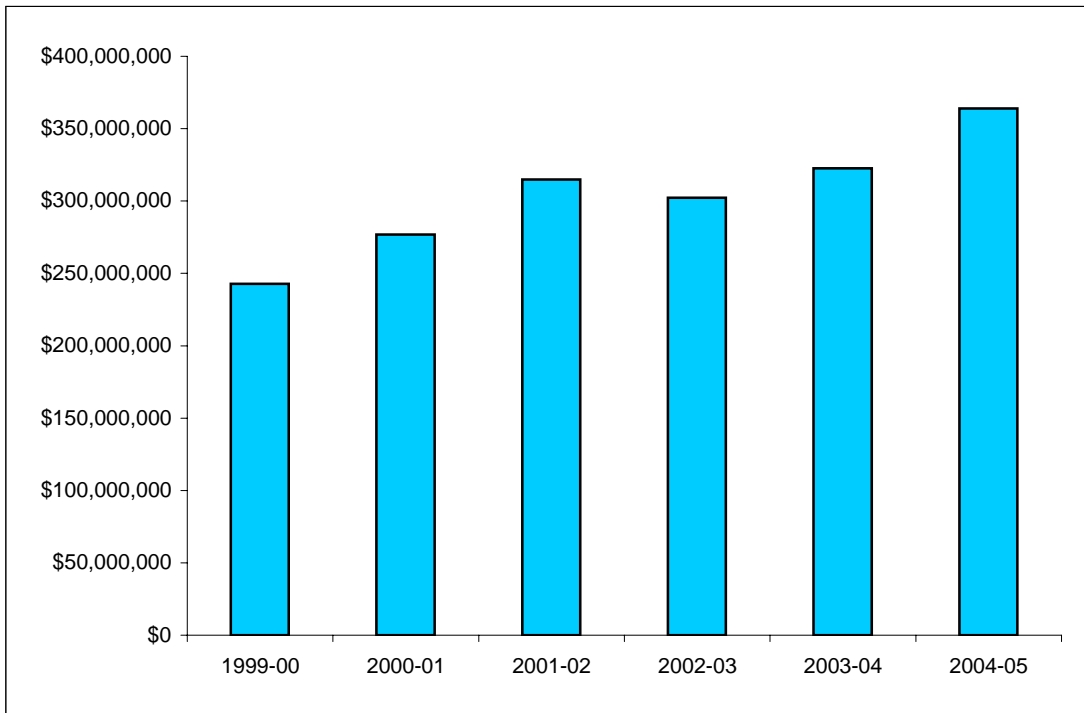
Notes:

1. Federal figure includes multiple funding sources.

Source:

Office of Sponsored Programs FY 2005 Year End Report

**TOTAL CONTRACTS AND GRANTS AWARDED
FISCAL YEARS 1999-00 THROUGH 2004-05**



<u>Fiscal Year</u>	<u>Total Awards</u>	<u>Percent Change from Previous Year</u>
1999-00	\$242,711,399	1.2%
2000-01	\$276,742,414	14.0%
2001-02	\$314,948,013	13.8%
2002-03	\$302,232,874	-4.0%
2003-04	\$322,505,587	6.7%
2004-05	\$363,993,850	12.9%

Source:
Office of Sponsored Programs FY 2005 Year End Report

**CONTRACT AND GRANT PROPOSALS SUBMITTED,
AWARDS RECEIVED, INDIRECT COSTS COLLECTED
JULY 1, 2004 TO JUNE 30, 2005**

School/College or Department	Number of Proposals Submitted	Number of Awards Funded	Amount of Awards
Architecture & Planning	25	16	\$691,338
Arts & Media	1	1	\$50,000
Business	1	3	\$793,528
Education	52	34	\$4,650,286
Engineering	35	27	\$952,261
Liberal Arts & Sciences	85	55	\$4,417,341
Public Affairs	18	11	\$1,179,496
Library	1	1	\$4,616
Office of Academic and Student Affairs *	27	68	\$68,893
Office of Administration and Finance	2	2	\$5,757,133
Sub-Total DDC Campus	247	218	\$18,564,892
Office of the Chancellor	213	4	\$773,482
School of Dentistry	24	14	\$6,215,997
School of Medicine	2,047	1,494	\$316,927,480
School of Nursing	33	24	\$3,467,342
School of Pharmacy	126	82	\$18,044,657
Sub-Total HSC Campus	2,443	1,618	\$345,428,958
TOTAL UCDHSC	2,690	1,836	\$363,993,850

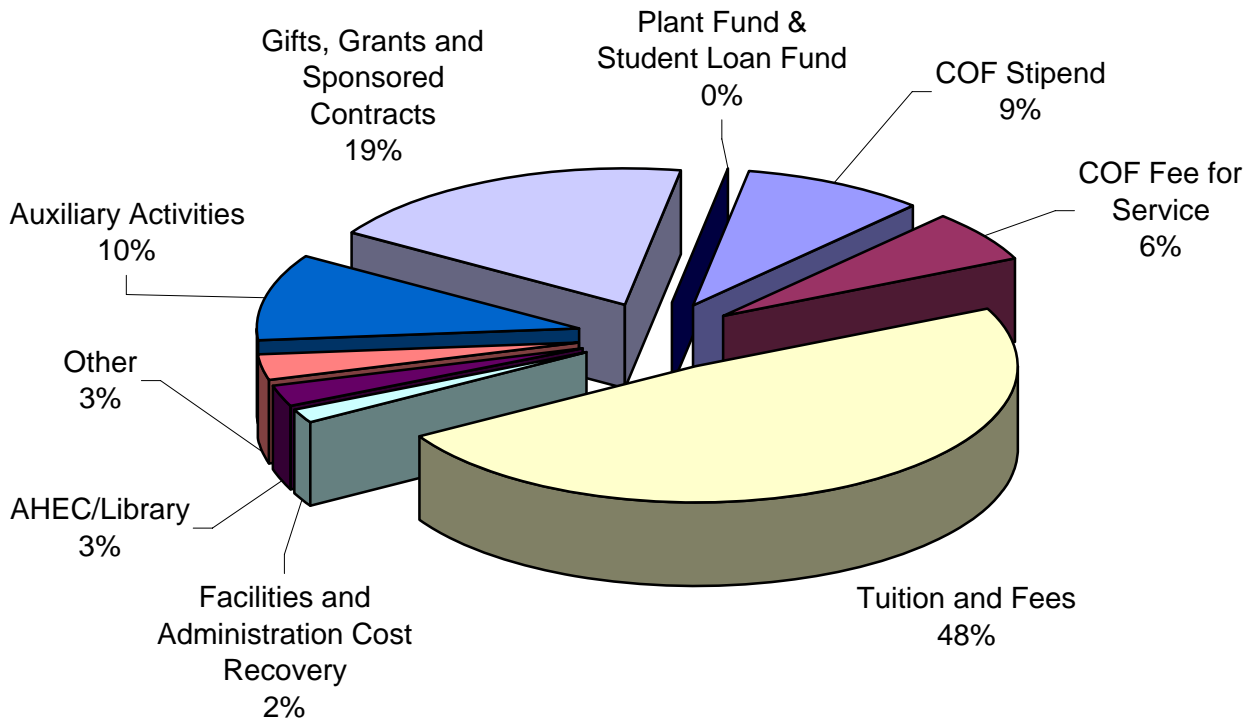
Source:

Office of Sponsored Programs June, FY 2005 Year End Report

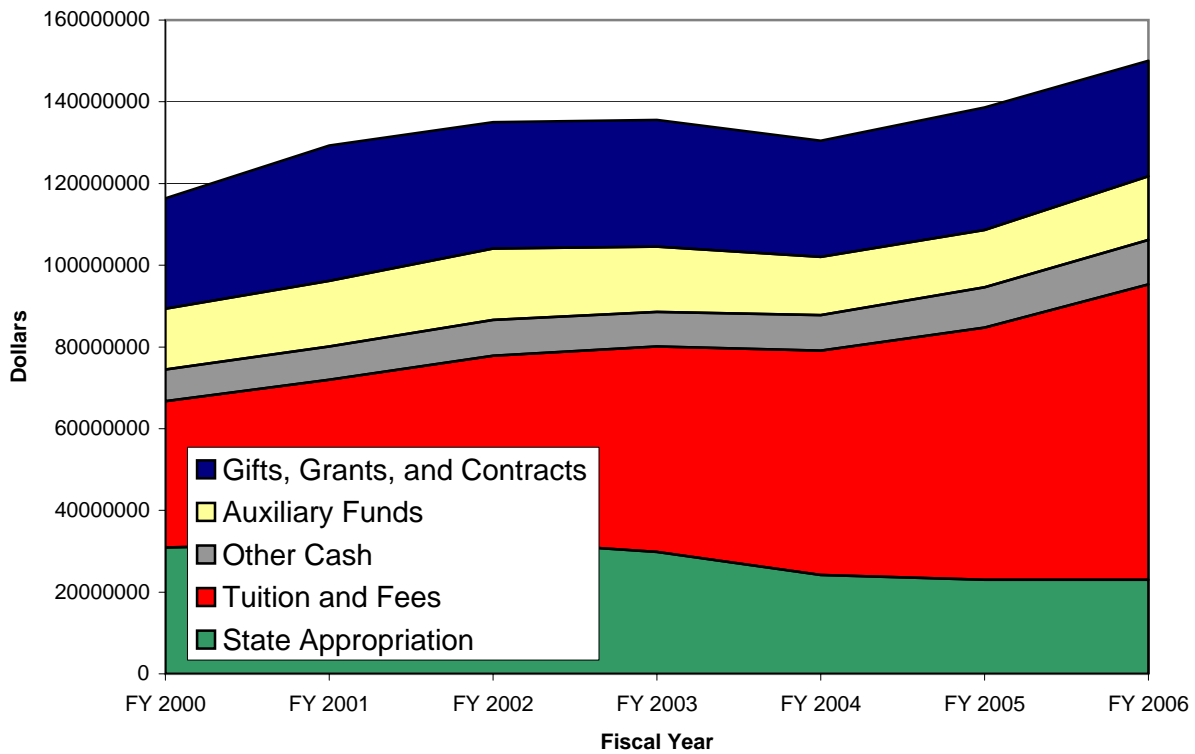
* Figure for Academic and Student Affairs now includes the former International Training, Education and Research Academy, now two separate components (National Learning Center and the Latino/a Research and Policy Center), both reporting to ASA

Downtown Denver Campus FY 2006 Budget

Total Budget Amount \$150,023,400

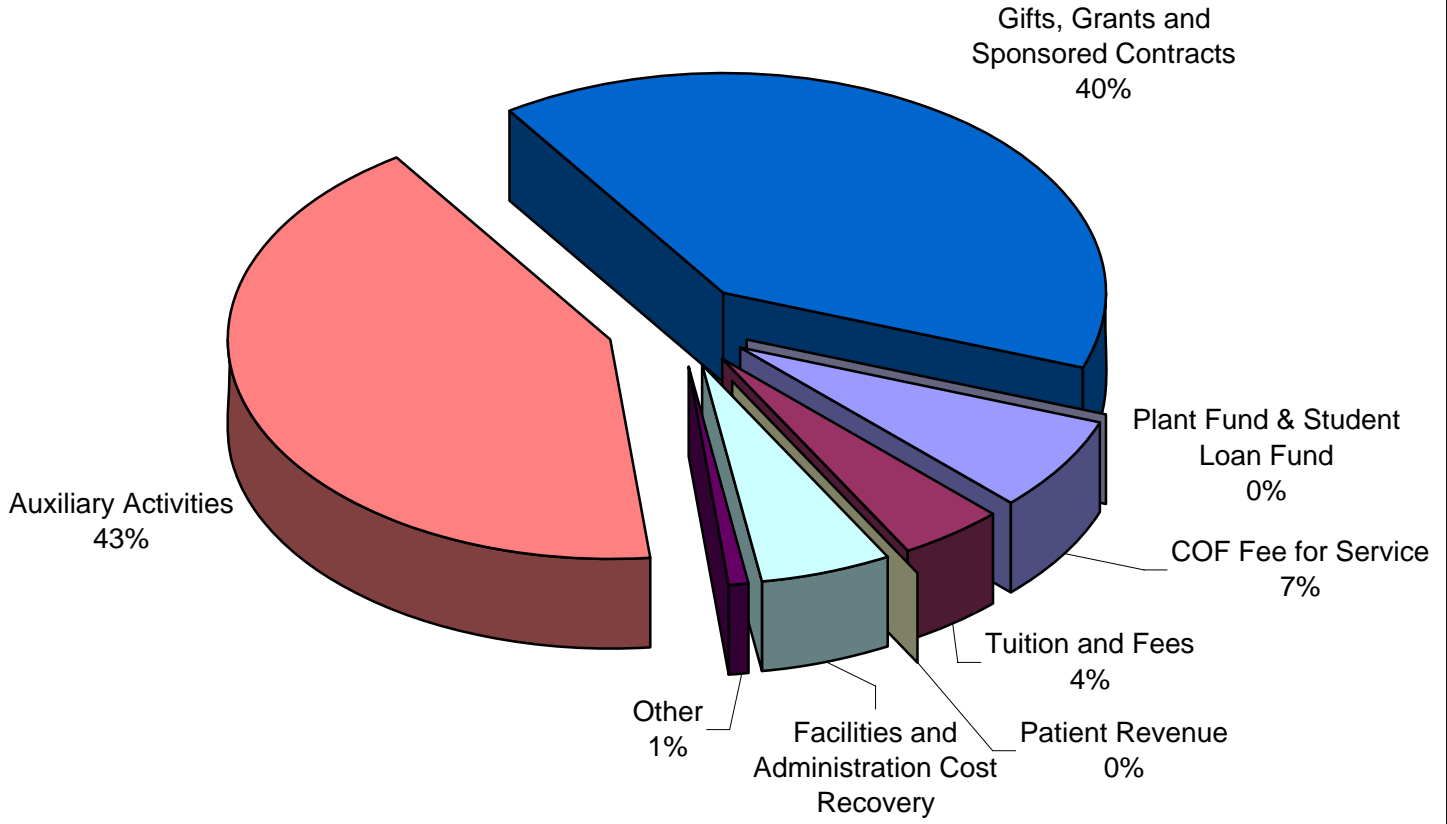


Downtown Denver Campus Source of Revenue

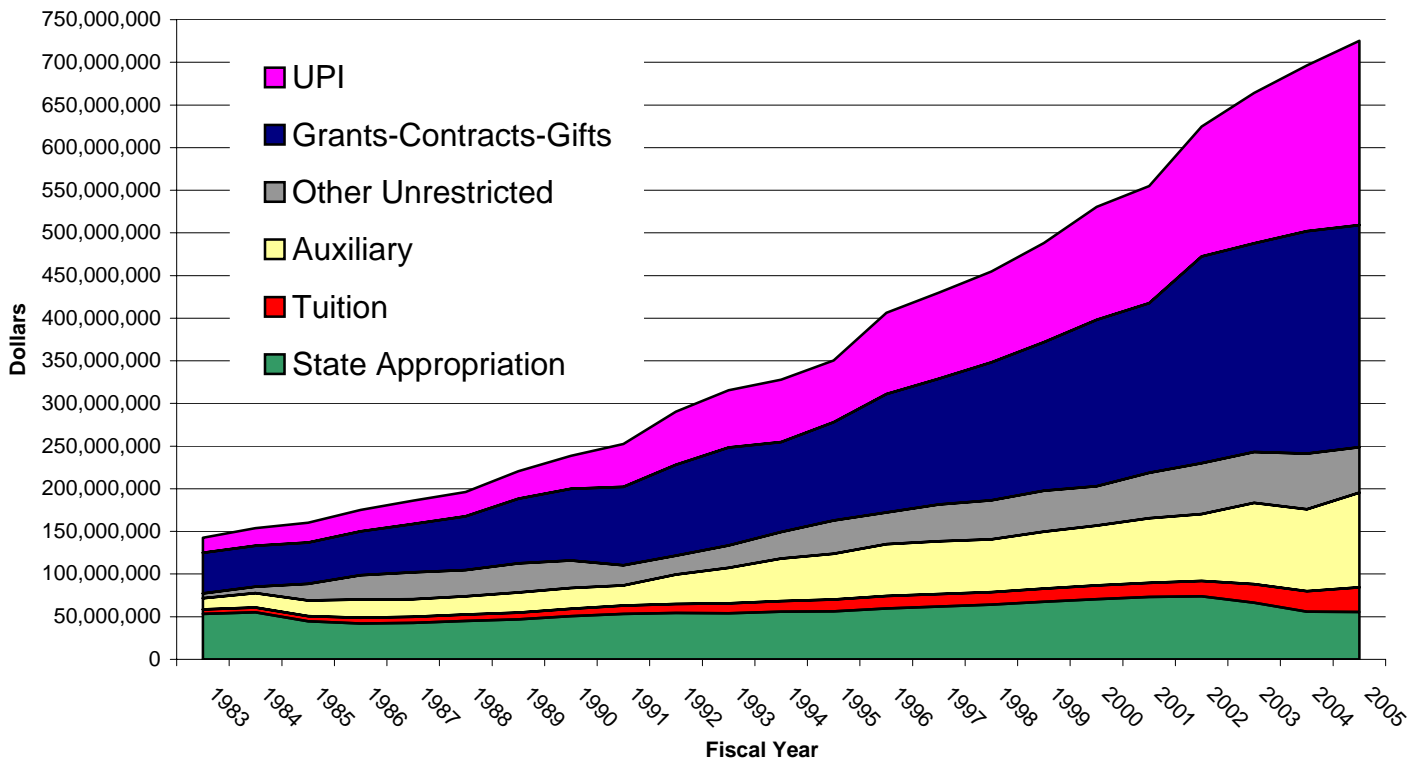


Health Sciences Programs FY 2006 Budget

Total Budget Amount \$793,857,240



Health Sciences Programs Sources of Revenue



Health Sciences Programs Top 20 Sponsored Program Awards

Principal Investigator	Title	Sponsor	Fiscal Year 2005
Richard Krugman	General Clinical Research Center - Adult	National Center for Research Resources	\$7,297,966
Richard Irons	China Leukemia Lymphoma Project	American Petroleum Institute	\$6,038,344
Richard Krugman	General Clinical Research Center - Pediatrics	National Center for Research Resources	\$3,539,007
Paul Bunn	Cancer Center Support Grant	National Cancer Institute	\$3,562,737
Paula Riggs	Rocky Mountain Regional Clinical Trials Node	National Institute on Drug Abuse	\$3,327,643
George Eisenbarth	Virginia Mason/UCHSC Autoimmune Prevention Center	National Institute of Allergy and Infectious Diseases	\$3,096,127
Richard Krugman	UCDHSC Autoimmunity and Immunotherapeutics	Center National Center for Research Resources	\$2,921,187
Spero Manson	Coordinating Center of HIS/NDP Competitive Grant Program	Department of Health and Human Services	\$2,881,918
	International Hearing Center for Information Control Education		
Herman Jenkins	Resources and Research (Marion Downs Hearing Center)	Centers for Disease	\$2,808,560
Ivan McMurtry	Adaptations to Hypoxia	National Heart Lung and Blood Institute	\$2,291,031
Cordelia Robinson	Project Bloom	Colorado Department of Human Services	\$2,256,541
Paul Bunn	Spore in Lung Cancer	National Cancer Institute	\$2,253,785
Constance A. Benson	Aids Education and Training Centers	Health Resources And Services Administration	\$2,119,432
John T Brewster	Signal Treatment Contract	Signal Behavioral Health Network	\$2,104,906
	National Lung Screening Trail (NLST) (Contract Modification to		
David Crawford	PLCO Cancer Screening Trial)	National Cancer Institute	\$2,094,698
Robert Freedman	Molecular Neurobiology of Schizophrenia	National Institute of Mental Health	\$2,002,432
	Equipment the Dental Clinic in the Lazarra Center for Oral-Facial		
Randy Kluender	Health on the Fitzsimons Campus	Colorado Department Health Care Policy Financing	\$2,000,000
Courtney Fletcher	University of Colorado Center for Aids Research (CFAR)	National Institute of Allergy and Infectious Diseases	\$1,932,988
Anirban Banerjee	Trauma Primes Cells	National Institute of General Medical Sciences	\$1,900,031
Thomas Campbell	Adult AIDS Clinical Trials Unit (AACTU)	National Institute of Allergy and Infectious Diseases	\$1,836,247