

INSTITUTIONAL FACTS AND CHARACTERISTICS

**University of Colorado at Denver and Health Sciences Center
Downtown Denver Campus**

**Office of Institutional Research, Planning and Analysis
Fall 2004**

TABLE OF CONTENTS

SECTION I. GENERAL INFORMATION

Role and Mission Statement	1
Definitions of Terms and Abbreviations	2
History and Summary of Facts	3

SECTION II. STUDENT DATA

Headcount Enrollments by School and College - Fall Semesters	1
Headcount Enrollments by Gender, Undergraduate/Graduate and Full-time/Part-time - Fall Semesters	2
Enrollments by Class and Gender - Fall Semesters	3
Distribution of Headcount Students by Class, Major and Ethnic Category - Fall 2004	4
Comparison of Headcount to Term FTE Students - Fall 1998 through Fall 2003	5
Enrollments by Major - Fall 2004	6
Enrollments by Major - Undergraduate History Fall 2000-Fall 2004	9
Enrollments by Major - Graduate History Fall 2000-Fall 2004	11
Ethnic Distribution of Headcount Students - Fall Semesters	14
Age Distribution - Fall 2004	15
Distribution of Student Headcount by County - Fall 2004	16
Student Headcount by Metro Denver County - Fall 2004	17
Average Student Credit Hour Load by Level - Fall Semesters	18
Undergraduate Applicants by Academic Unit - Fall 2003 and Fall 2004	19
FY FTE Students by School/College and Subject Area - 1999-00 through 2003-04	20
FY FTE Students by Level of Instruction	21
FY FTE Students by School/College and Level of Instruction	22
FTE Students by School/College, Department and Level of Instruction - FY 2003-04	23

SECTION III. ALUMNI DATA

Alumni by Year of Graduation	1
Alumni by Geographic Location	2
Alumni by Degrees - Cumulative 1975-76 through 2003-04	3

SECTION IV. DEGREE DATA

Degrees Offered by School/College & Program (CCHE Approved Degree Programs) - 2003-04	1
Degrees Conferred - 1975-96 through 2003-04	2
Degrees Conferred by Gender - 2003-04	3
Degrees Conferred by Ethnicity & Undergraduate/Graduate Status - 2003-04	4
Degrees Conferred by School/College - 1999-00 through 2003-04	5

TABLE OF CONTENTS
(Continued)

SECTION V. FACULTY DATA

Full-time Instructional Faculty Distribution by Gender and Highest Degree Awarded	1
Full-time Instructional Faculty Distribution by Tenure Status, Rank and Ethnicity	2
Full-time Instructional Faculty Distribution by Age	3
Percent Full-time Faculty - 1999-00 through 2003-04	4
FTE Instructional Faculty - 1999-00 through 2003-04	5
Student/Faculty Ratios by School/College and Department - 1999-00 through 2003-04	6
Student Credit Hours/FTE Faculty by School/College - FY 1999-00 through FY 2003-04	7

SECTION VI. FINANCIAL DATA

Financial Aid Awards - 2002-03 and 2003-04	1
Revenue and Expenditures State Appropriations - Fiscal Year 2003-04	2
Revenue FY 2002-03 and Expenditures FY 2003-04	3
Contracts and Grants by Funding Source - Fiscal Year 2003-04	4
Total Contracts and Grants Awarded - Fiscal Years 1999-00 through 2003-04	5
Contract and Grant Proposals Submitted, Awards Received, Indirect Costs Collected - FY 2003-04	6

Section I.
General Information

UNIVERSITY OF COLORADO AT DENVER

STATEMENT OF PURPOSES

- Provide students with learning opportunities that will enhance the quality of their lives, that will make them well-educated citizens, that will lead to rewarding careers, and that will provide Denver and Colorado with a workforce able to compete in the global economy;
- Develop research, scholarship and creative work that will advance the base of knowledge in our disciplines and that will contribute to the vitality of our culture and/or economy;
- Apply the university's skills and knowledge to real problems in the Denver metro area;
- Build and maintain an institutional culture of plurality, collegiality, integration and customer service.

Source:

NCA Institutional Self - Study

MISSION, ROLE, AND SCOPE STATEMENT

(SB 03-304 signed by Governor Owens June, 2003)

The Denver campus of the University of Colorado shall be an urban comprehensive undergraduate and graduate research university with selective admission standards. The Denver campus shall offer baccalaureate, masters, and a limited number of doctoral degree programs, emphasizing those that serve the needs of the Denver metropolitan area. The Denver campus has statewide authority to offer graduate programs in Public Administration and exclusive authority in Architecture and Planning.

DEFINITION OF TERMS AND ABBREVIATIONS

Some of the tables and graphs included in this document use abbreviations or terms which may be unfamiliar. Following is a list of the most commonly used terms and related definitions.

FTE Student (FTES) - full-time equivalent student, calculated by dividing student credit hours by 30.

Fiscal Year FTES - includes summer, fall, and spring student credit hours divided by 30.

Term FTES - full-time equivalent student for a single semester, calculated by dividing student credit hours by 15.

Headcount Students - the number of individual students enrolled for a semester.

SCH - Student credit hours, derived by multiplying the number of students enrolled in a course by the course credit (e.g., 3.0 credit hours x 30 students = 90 SCH).

FTEF - Full-time equivalent faculty.

SFR - Student faculty ratio (FTES divided by FTEF).

NRA - Non-resident alien.

**UNIVERSITY OF COLORADO AT DENVER & HEALTH SCIENCES CENTER –
DOWNTOWN DENVER CAMPUS
HISTORY AND SUMMARY OF FACTS**

History

- 1912 University of Colorado organizes Department of Correspondence and Extension in Denver; courses first offered.
- 1923 Regents of University of Colorado adopt policy to accept up to 90 hours of credit work earned in the Extension Division.
- 1953 Appointment of a Dean of the Extension Division.
- 1956 Regents purchase Tramway Building to house Extension Division.
- 1964 Regents change name of Denver Extension Center to the University of Colorado - Denver Center and place the administration of programs under the Vice President for Academic Affairs and Dean of Faculties.
- 1972 Constitutional amendment allowing the University of Colorado to maintain and develop branches and to rename the Denver Center the University of Colorado at Denver.
- 1974 House Bill 1163 Statutory Recognition for Auraria.
Reorganization of the University of Colorado into a four-campus system.
- 2004 Consolidated with the University of Colorado Health Sciences Center, consequently renamed as the University of Colorado at Denver and Health Sciences Center.

Information included in this fact book reflects data about the UCDHSC Downtown Denver Campus only.

Schools and Colleges

- College of Architecture and Planning
- College of Arts and Media
- Business School
- College of Engineering and Applied Science
- College of Liberal Arts and Sciences
- School of Education
- Graduate School of Public Affairs

Fine Arts, Music, and Theatre are no longer a part of the College of Liberal Arts and Sciences. They were transferred to the College of Arts and Media in FY 1997-98.

The School of Architecture and Planning changed its name to the College of Architecture and Planning in academic year 1993-94 to reflect the merger of the Graduate School of Architecture and Planning in Denver with the undergraduate College of Environmental Design in Boulder.

Degree Programs Offered

Undergraduate	27
Graduate	
Master's	43
Doctorate	7
Ed. S.	2
TOTAL	79

Fall 2004 Student Headcount Enrollment 12,316

Undergraduate	7,250	59%
Graduate	5,066	41%
Full-time	6,778	55%
Part-time	5,538	45%
Male	5,635	46%
Female	6,681	54%
Minorities	2,617	21%
Average Age	28	

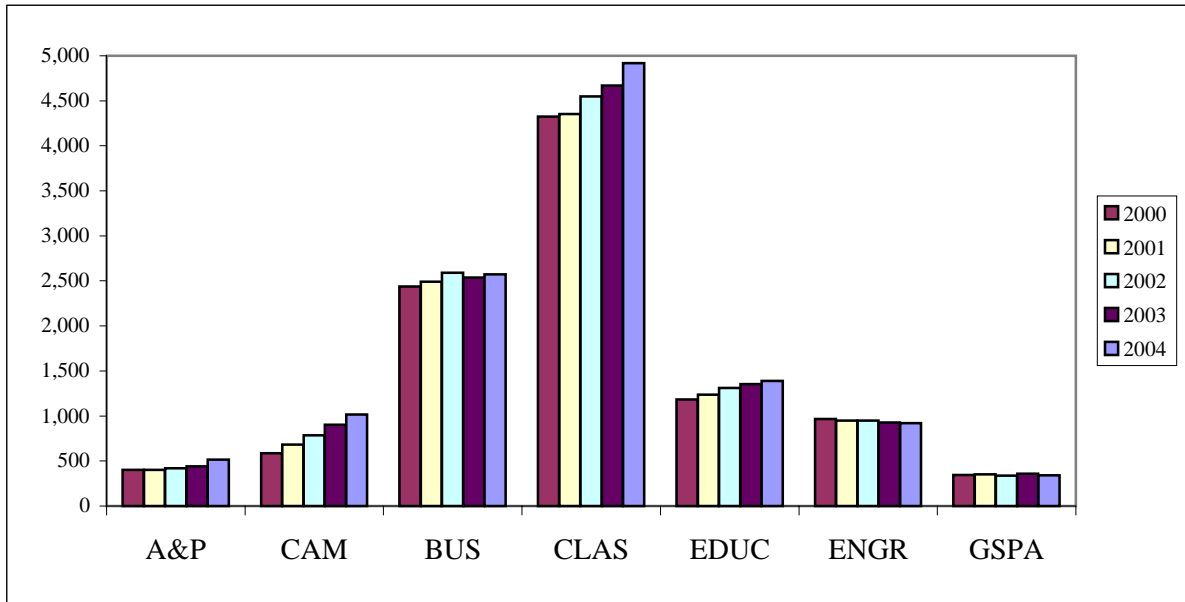
Fall 2004 Instructional Faculty

Full-time Instructional Faculty	443
Average Age	50
Tenured	49%
Percent with Terminal Degree	88%
Male	63%
Female	37%
Minorities	14%

Note: Master's Degrees in Fine Arts, Theatre, Music, and Architecture & Planning are considered terminal degrees. These degree counts are added to the Doctorate counts to calculate % with terminal degrees.

Section II.
Student Data

HEADCOUNT ENROLLMENTS BY SCHOOL AND COLLEGE FALL SEMESTERS



	<u>2000</u>	<u>2001</u>	<u>2002</u>	<u>2003</u>	<u>2004</u>
Architecture & Planning ¹	401	400	421	441	517
Arts & Media ²	586	683	786	902	1,016
Business	2,437	2,490	2,590	2,536	2,572
Liberal Arts & Sciences	4,324	4,353	4,550	4,668	4,918
Education	1,183	1,236	1,311	1,354	1,389
Engineering	965	948	948	927	920
Public Affairs	344	352	337	359	340
Other Units	14	4	4	0	0
Non-Degree	796	815	880	783	644
TOTAL CU-Denver	11,050	11,281	11,827	11,970	12,316

Notes:

1. Architecture & Planning does not include students from the undergraduate Environmental Design program taught in Boulder.
2. Arts, Fine Arts, Music and Theatre were transferred into Arts & Media FY 1997-98.
3. Data are end-of-term figures.

Source:

Enrollment Reports
Office of Institutional Research, Planning & Analysis

**HEADCOUNT ENROLLMENTS BY GENDER,
UNDERGRADUATE/GRADUATE AND FULL-TIME/PART-TIME STATUS
FALL SEMESTERS**

FALL SEMESTER	TOTAL STUDENT ENROLLMENT	GENDER		LEVEL		STATUS	
		FEMALE	MALE	UNDER-GRAD	GRAD	FULL-TIME	PART-TIME
2000	11,050	6,020	5,030	6,409	4,641	5,464	5,586
2001	11,281	6,188	5,093	6,474	4,807	5,693	5,588
2002	11,827	6,432	5,395	6,697	5,130	6,128	5,699
2003	11,970	6,566	5,404	6,835	5,135	6,377	5,593
2004	12,316	6,681	5,635	7,250	5,066	6,778	5,538

Notes:

Data are end-of-term figures.

Source:

Enrollment Reports

Office of Institutional Research, Planning & Analysis

**ENROLLMENTS BY CLASS AND GENDER
FALL SEMESTERS**

	2000	2001	2002	2003	2004
FRESHMEN	1,301	1,263	1,360	1,397	1,525
Male	588	542	591	621	697
Female	713	721	769	776	828
SOPHOMORES	1,273	1,370	1,360	1,480	1,565
Male	558	600	643	681	698
Female	715	770	717	799	867
JUNIORS	1,474	1,533	1,636	1,573	1,736
Male	660	674	758	748	810
Female	814	859	878	825	926
SENIORS & 5TH YEAR	2,193	2,157	2,200	2,280	2,315
Male	1,051	1,027	1,044	1,077	1,148
Female	1,142	1,130	1,156	1,203	1,167
NON-DEGREE	168	151	141	105	109
Male	93	79	70	60	50
Female	75	72	71	45	59
UNDERGRADUATE TOTALS	6,409	6,474	6,697	6,835	7,250
Male	2,950	2,922	3,106	3,187	3,403
Female	3,459	3,552	3,591	3,648	3,847
GRADUATE	4,641	4,807	5,130	5,135	5,066
Male	2,080	2,171	2,289	2,217	2,232
Female	2,561	2,636	2,841	2,918	2,834
STUDENT TOTALS	11,050	11,281	11,827	11,970	12,316
Male	5,030	5,093	5,395	5,404	5,635
Female	6,020	6,188	6,432	6,566	6,681

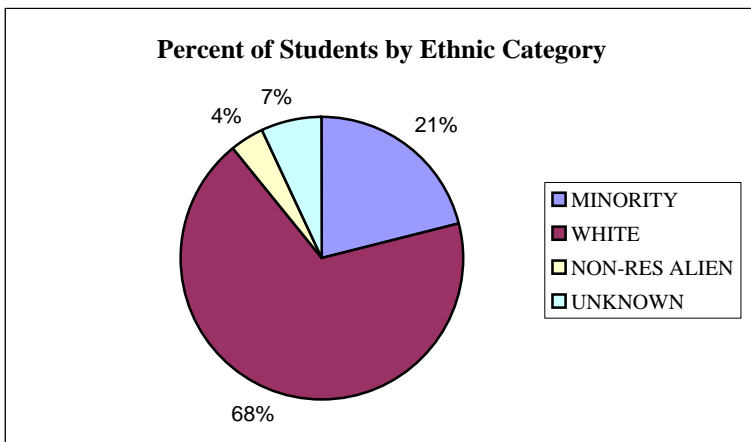
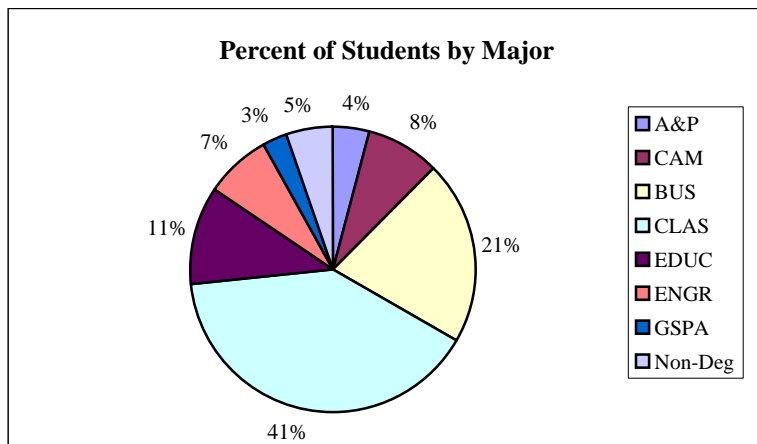
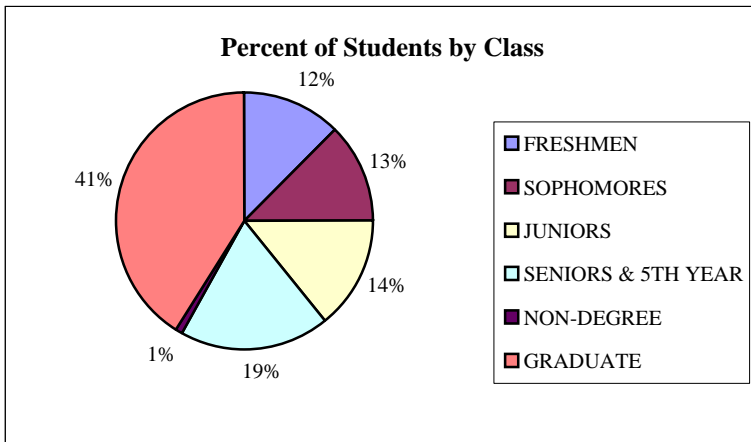
Notes:

Data are end-of-term figures.

Source:

Enrollment Reports
Office of Institutional Research, Planning & Analysis

DISTRIBUTION OF HEADCOUNT STUDENTS FALL 2004



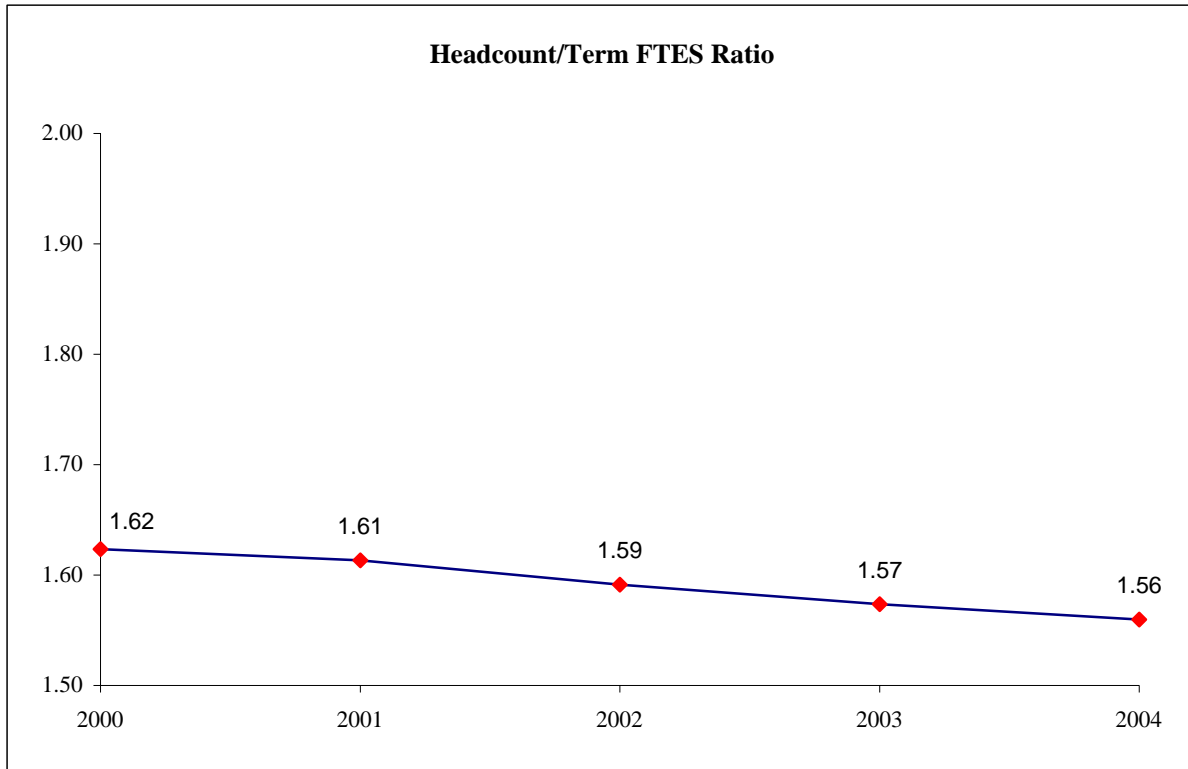
Notes:

1. Architecture & Planning does not include students from the undergraduate Environmental Design program taught in Boulder.
2. Arts, Fine Arts, Music and Theatre were transferred into Arts & Media FY 1997-98.
3. Data are end-of-term figures.

Source:

Enrollment Reports
Office of Institutional Research, Planning & Analysis

**COMPARISON OF HEADCOUNT TO TERM FTE STUDENTS
FALL 2000 THROUGH FALL 2004**



<u>FALL SEMESTER</u>	<u>HEADCOUNT</u>	<u>TERM FTES</u>	<u>HEADCOUNT/TERM FTES RATIO</u>
2000	11,050	6805.97	1.62
2001	11,281	6991.97	1.61
2002	11,827	7431.63	1.59
2003	11,970	7606.77	1.57
2004	12,316	7895.93	1.56

Notes:

1. Data are end-of-term figures.
2. Headcount to FTE student ratio indicates the number of headcount students it takes to equal one full-time equivalent student at the University.

Source:

Enrollment Reports
Office of Institutional Research, Planning & Analysis

**ENROLLMENTS BY MAJOR
FALL 2004**

<u>MAJOR CODE</u>		<u>UNDER- GRAD</u>	<u>GRAD</u>	<u>TOTAL</u>
COLLEGE OF ARCHITECTURE AND PLANNING			517	517
ARCH	Architecture		283	283
ARUR	Architecture in Urban Design		9	9
DSPL	Design and Planning		28	28
LAND	Landscape Architecture		82	82
URRP	Urban and Regional Planning		115	115
COLLEGE OF ARTS AND MEDIA		1,005	11	1,016
AVFT	Film and Video Studies	1		1
CRAR	Fine Arts - BFA Program	256		256
FINE	Fine Arts - BA Program	75		75
MUIS	Music Industry Studies	133		133
MUSC	Music	313		313
RAMS	Recording Arts		11	11
THFT	Theatre, Film and Television - BFA Program	133		133
THTE	Theatre, Film and Television - BA Program	10		10
THTR	Theatre	24		24
AMUD	Undetermined	60		60
COLLEGE OF BUSINESS		1,311	1,261	2,572
ACCT	Accounting	274	122	396
AMBA	Business Administration-One Year Program			0
BGEN	General Business	12		12
FNCE	Finance	227	117	344
HLAD	Health Administration		14	14
INBU	International Business	135	45	180
INFS	Information Systems	95	104	199
MBAC	Master of Business Administration - Cohort Program		22	22
MBAD	Master of Business Administration		679	679
MBAH	Master of Business Administration Health		67	67
MBAO	Master of Business Administration - Other			0
MGMT	Management	224	1	225
MKTG	Marketing	199	46	245
ORMG	Organization Management		1	1
PHIS	Computer Science and Information Systems		33	33
PHRM	Human Resources Management	25	10	35
BUUD	Undetermined	120		120
COLLEGE OF ENGINEERING AND APPLIED SCIENCE		552	368	920
CMSC	Computer Science		163	163
CSCI	Computer Science & Engineering	131		131
CVEN	Civil Engineering	112	97	209
EEEN	Electrical Engineering	159	36	195
MAEG	Engineering		38	38
MCEN	Mechanical Engineering	124	22	146
PHCS	Computer Science and Information Systems		12	12
ENUD	Undetermined	26		26

(continued)

MAJOR CODE		UNDER- GRAD	GRAD	TOTAL
SCHOOL OF EDUCATION			1,389	1,389
ADAP	Educational Leadership and Innovation - Access		2	2
ALPS	Administration Leadership and Professional Studies		98	98
CAIN	Counseling Psychology and Counselor Education - INT		1	1
CCFC	Counseling Psychology and Counselor Education - Family		1	1
CIED	Curriculum and Instruction		252	252
CIEN	Curriculum and Instruction - English (Secondary)		2	2
CIMA	Curriculum and Instruction - Mathematics (Elem. & Secondary)		14	14
CIMH	Curriculum and Instruction - Mental Health (Elem. & Secondary)		8	8
CISC	Curriculum and Instruction - Science (Elem. & Secondary)		3	3
CISS	Curriculum and Instruction - Social Studies (Secondary)		5	5
CITE	Curriculum and Instruction - Technology (Elem. & Secondary)		6	6
CPCE	Counseling Psychology and Counselor Education		194	194
CSCH	Counseling Psychology and Counselor Education - School		1	1
DEGL	Curriculum and Instruction - Secondary English Dual Lic.		2	2
DELE	Curriculum and Instruction - Elementary Educ Dual Lic.		23	23
DSCI	Curriculum and Instruction - Science (General Special Education)		1	1
DSOC	Curriculum and Instruction - Social Studies (Special Education)		1	1
EBIL	Curriculum and Instruction - Belm/Bilingual/ESL		15	15
ECAP	Early Childhood Education - Access		17	17
ECED	Early Childhood Education		71	71
EDLI	Educational Leadership and Innovation		84	84
ELEM	Elementary Education		117	117
ELIB	Endorsement - Library Media		3	3
ELSE	Curriculum and Instruction - BIL/ESL Elem.		1	1
EPSA	Education Psychology - Access (Elem. & Secondary)		5	5
EPSC	Endorsement - School Counselor		3	3
EPSG	Education Psychology - Gro/Dev/Lrn (Elem. & Secondary)		11	11
EPSY	Educational Psychology		56	56
ERDG	Curriculum and Instruction - Elementary Literacy		15	15
ESPD	Endorsement - Special Education		2	2
ETLD	Endorsement - Teacher Linqst DVRSE		6	6
ILTA	Information and Learning Technologies Inst DSG/Adult LRN		2	2
INLT	Information and Learning Technologies		107	107
LPRI	Licensure: School Principal		8	8
LSPY	Licensure: School Psychology		8	8
REND	Endorsement: Reading Teacher		2	2
SBIL	Curriculum and Instruction - Secondary Bilingual/ESL		6	6
SBIO	Curriculum and Instruction - Science - Biology		10	10
SCHM	Curriculum and Instruction - Science - Chemistry		1	1
SEGL	Curriculum and Instruction - English		35	35
SERT	Curriculum and Instruction - Science - Earth		1	1
SFLS	Curriculum and Instruction - Foreign Language - Spanish		2	2
SMTH	Curriculum and Instruction - Mathematics		13	13
SPD1	Special Education - Teacher 1		43	43
SPD2	Special Education - Teacher 2		12	12
SPD3	Special Education - Teacher 3		1	1
SPED	Special Education		17	17
SPHY	Curriculum and Instruction - Science - Physics		1	1
SPSY	School Psychology		59	59
SRDG	Curriculum and Instruction - Secondary Literacy		2	2
SSCI	Curriculum and Instruction - Science - General		9	9
SSOC	Curriculum and Instruction - Social Studies		22	22
TECE	Teacher Certification		8	8

(continued)

<u>MAJOR CODE</u>		<u>UNDER-GRAD</u>	<u>GRAD</u>	<u>TOTAL</u>
COLLEGE OF LIBERAL ARTS AND SCIENCES		4,273	645	4,918
AMEN	Applied Mathematics		65	65
ANTH	Anthropology	71	28	99
BIOL	Biology	595	26	621
CHEM	Chemistry	120	20	140
COMM	Communication	222	16	238
ECON	Economics	108	41	149
ENGL	English	171	68	239
EVSC	Environmental Sciences		39	39
EWRT	English Writing	144		144
FREN	French	19		19
GEOG	Geography	61		61
GEOL	Geology	6		6
GRMN	German	4		4
HBSC	Health and Behavioral Sciences		32	32
HIST	History	154	53	207
HUMN	Humanities		61	61
INST	Individually Structured	140		140
ISCI	Integrated Sciences		18	18
MATH	Mathematics	97		97
PHIL	Philosophy	52		52
PHYS	Physics	36		36
PRBU	Pre-Business	338		338
PRCH	Pre-Child Health Associate	6		6
PRCO	Pre-Communication	81		81
PRDE	Pre-Dentistry	20		20
PRDH	Pre-Dental Hygiene	14		14
PREN	Pre-Engineering	214		214
PRJR	Pre-Journalism	13		13
PRMD	Pre-Medicine	101		101
PRMT	Pre-Medical Technology	2		2
PRNU	Pre-Nursing	127		127
PRPH	Pre-Pharmacy	57		57
PRPT	Pre-Physical Therapy	17		17
PRVT	Pre-Veterinary Medicine	5		5
PSCI	Political Science	251	48	299
PSYC	Psychology	381	31	412
PSYS	Psychology - BS	101		101
SOCI	Sociology	144	27	171
SOCS	Social Science		52	52
SPAN	Spanish	34		34
TECH	Technical Communication		20	20
LAUD	Undetermined	367		367
GRADUATE SCHOOL OF PUBLIC AFFAIRS			340	340
AMPA	Public Administration - Accelerated		1	1
CRJU	Criminal Justice		49	49
EXPA	Public Administration - Executive		27	27
PADM	Public Administration		208	208
PAWS	Public Administration - Western Slope		7	7
PAFF	Public Affairs		48	48
OTHER		109	535	644
	Other Units			0
	Non-Degree	109	535	644
FALL 2004 TOTALS		7,250	5,066	12,316

Notes:

Data are end-of-term figures.

Source:

Office of Institutional Research, Planning & Analysis

**ENROLLMENTS BY MAJOR HISTORY - UNDERGRADUATES
FALL 2000-FALL 2004**

MAJOR CODE		Fall <u>2000</u>	Fall <u>2001</u>	Fall <u>2002</u>	Fall <u>2003</u>	Fall <u>2004</u>
COLLEGE OF ARTS AND MEDIA		586	683	786	895	1,005
AVFT	Film and Video Studies			15	50	1
CRAR	Fine Arts - BFA Program	136	170	228	234	256
FINE	Fine Arts - BA Program	86	105	63	71	75
MUIS	Music Industry Studies			68	129	133
MUSC	Music	215	253	256	270	313
PRTH	Pre-Theatre					
THFT	Theatre, Film and Television - BFA Program					133
THTE	Theatre, Film and Television - BA Program					10
THTR	Theatre	56	60	53	47	24
AMUD	Undetermined	93	95	103	94	60
COLLEGE OF BUSINESS		1,158	1,190	1,202	1,207	1,311
ACCT	Accounting	172	139	164	219	274
BGEN	General Business	7	12	6	12	12
FNCE	Finance	184	207	236	229	227
INBU	International Business	99	93	103	113	135
INFS	Information Systems	257	251	185	131	95
MGMT	Management	127	146	172	177	224
MKTG	Marketing	119	154	181	169	199
PHRM	Human Resources Management	39	34	22	18	25
BUUD	Undetermined	154	154	133	139	120
COLLEGE OF ENGINEERING AND APPLIED SCIENCE		707	642	613	575	552
AMEN	Applied Mathematics	7	3	2	1	
CVEN	Civil Engineering	116	107	114	102	112
CSCI	Computer Science & Engineering	295	277	260	203	131
EEEN	Electrical Engineering	142	126	118	147	159
EECI	Electrical Engineering and Computer Science	1	1	1		
MCEN	Mechanical Engineering	123	98	92	104	124
ENUD	Undetermined	23	30	26	18	26

(continued)

MAJOR CODE		Fall 2000	Fall 2001	Fall 2002	Fall 2003	Fall 2004
COLLEGE OF LIBERAL ARTS AND SCIENCES		3,782	3,807	3,955	4,053	4,273
ANTH	Anthropology	63	64	60	76	71
BIOL	Biology	449	412	468	523	595
CHEM	Chemistry	79	78	82	101	120
COMM	Communication	106	125	153	162	222
ECON	Economics	82	88	96	101	108
ENGL	English	151	129	139	132	171
EWRT	English Writing	94	99	112	110	144
FREN	French	23	25	28	28	19
GEOG	Geography	32	28	44	53	61
GEOL	Geology	29	28	30	15	6
GRMN	German	15	14	14	8	4
HIST	History	103	107	128	136	154
INST	Individually Structured	46	37	57	105	140
MATH	Mathematics	73	83	88	84	97
PHIL	Philosophy	64	67	62	47	52
PHYS	Physics	29	32	27	36	36
PSCI	Political Science	150	185	202	216	251
PRBU	Pre-Business	360	369	350	347	338
PRCH	Pre-Child Health Associate	6	4	1	2	6
PRCO	Pre-Communication	150	169	151	151	81
PRDH	Pre-Dental Hygiene	2	4	14	15	14
PRDE	Pre-Dentistry	14	13	14	20	20
PRED	Pre-Education	1	1			
PREN	Pre-Engineering	329	334	312	266	214
PRJR	Pre-Journalism	4	7	8	12	13
PRMT	Pre-Medical Technology	3			3	2
PRMD	Pre-Medicine	107	113	109	106	101
PRNU	Pre-Nursing	35	56	81	99	127
PROP	Pre-Optometry	2	1			
PRPH	Pre-Pharmacy	35	41	45	45	57
PRPT	Pre-Physical Therapy	15	14	9	13	17
PRVT	Pre-Veterinary Medicine	2	5	10	8	5
PSYC	Psychology	381	379	361	376	381
PSYS	Psychology - BS	55	54	75	82	101
SOCI	Sociology	105	109	104	116	144
SPAN	Spanish	34	32	37	30	34
LAUD	Undetermined	554	501	484	429	367
OTHER		176	152	141	105	109
	Other Units	8	1			
	Non-Degree	168	151	141	105	109
TOTAL		6,409	6,474	6,697	6,835	7,250

Notes:

Data are end-of-term figures.

Source:

Office of Institutional Research, Planning & Analysis

**ENROLLMENTS BY MAJOR HISTORY - GRADUATES
FALL 2000-FALL 2004**

MAJOR CODE		Fall 2000	Fall 2001	Fall 2002	Fall 2003	Fall 2004
COLLEGE OF ARCHITECTURE AND PLANNING		401	400	421	441	517
ARCH	Architecture	228	225	234	238	283
ARUR	Architecture in Urban Design	2	4	4	4	9
DSPL	Design and Planning	24	27	31	31	28
LAND	Landscape Architecture	68	62	74	80	82
PLDS	Planning and Design	0				
URRP	Urban and Regional Planning	79	82	78	88	115
COLLEGE OF ARTS AND MEDIA				0	7	11
RAMS	Recording Arts				7	11
COLLEGE OF BUSINESS		1,279	1,300	1,388	1,329	1,261
ACCT	Accounting	81	70	88	114	122
AMBA	Business Administration - One Year Program	1	2			
BGEN	General Business					
BUUD	Undetermined					
FNCE	Finance	132	161	136	141	117
GMBA	Business Administration - Greeley Program					
HLAD	Health Administration	29	13	14	11	14
INBU	International Business	45	43	53	43	45
INFS	Information Systems	319	264	201	152	104
MBAC	Master of Business Administration - Cohort Program	101	99	100	73	22
MBAD	Master of Business Administration	450	506	644	631	679
MBAH	Master of Business Administration Health	29	51	59	69	67
MBAO	Master of Business Administration - Other		2	2		
MGMT	Management					1
MKTG	Marketing	51	44	50	46	46
MSIS	Management Sciences - Information Systems					1
ORMG	Organization Management	41	45	41	41	33
PHIS	Computer Science and Information Systems				8	10
PHRM	Human Resources Management					
COLLEGE OF ENGINEERING AND APPLIED SCIENCE		258	306	335	352	368
CMSC	Computer Science	100	119	153	149	163
CSCI	Computer Science	1	1			
CVEN	Civil Engineering	94	94	84	101	97
EEEN	Electrical Engineering	22	28	39	42	36
MAEG	Engineering	9	36	31	29	38
MCEN	Mechanical Engineering	32	28	28	19	22
PHCS	Computer Science and Information Systems				12	12

(continued)

MAJOR CODE		Fall 2000	Fall 2001	Fall 2002	Fall 2003	Fall 2004
SCHOOL OF EDUCATION		1,183	1,236	1,311	1,354	1,389
ADAP	Educational Leadership and Innovation - Access	14	8	3	2	2
ADSC	Administration Supervision Curriculum Development	59		4		
ALAP	Administration Leadership and Professional Studies - Access		3			
ALPS	Administration Leadership and Professional Studies		99	134	114	98
CAIN	Counseling Psychology and Counselor Education - INT					1
CCFC	Counseling Psychology and Counselor Education - Family					1
CEAP	Counseling Psychology and Counselor Education - Access	52		16	1	
CEAP	Counseling Psychology and Counselor Education - Access		27			
CIAP	Curriculum and Instruction - Access	7	2		1	
CIED	Curriculum and Instruction	392	476	498	306	252
CIEN	Curriculum and Instruction - English (Secondary)				5	2
CIMA	Curriculum and Instruction - Mathematics (Elem. & Secondary)				5	14
CIMH	Curriculum and Instruction - Mental Health (Elem. & Secondary)				1	8
CISC	Curriculum and Instruction - Science (Elem. & Secondary)				1	3
CISS	Curriculum and Instruction - Social Studies (Secondary)				1	5
CITE	Curriculum and Instruction - Technology (Elem. & Secondary)				3	6
CPCE	Counseling Psychology and Counselor Education	184	170	168	181	194
CSCH	Counseling Psychology and Counselor Education - School					1
DEGL	Curriculum and Instruction - Secondary English Dual Lic.				2	2
DELE	Curriculum and Instruction - Elementary Educ Dual Lic.				12	23
DSOI	Curriculum and Instruction - Science (General Special Education)					1
DSOC	Curriculum and Instruction - Social Studies (Special Education)					1
EBIL	Curriculum and Instruction - Belm/Bilingual/ESL				4	15
ECAP	Early Childhood Education - Access	14	9	11	17	17
ECED	Early Childhood Education	39	46	46	67	71
EDLI	Educational Leadership and Innovation	86	94	93	89	84
EECE	Endorsement - Early Childhood Special Education				1	
ELEM	Elementary Education				123	117
ELIB	Endorsement - Library Media				2	3
ELSE	Curriculum and Instruction - BIL /ESL Elem.					1
EPSA	Education Psychology - Access (Elem. & Secondary)				4	5
EPSC	Endorsement - School Counselor				1	3
EPSG	Education Psychology - Gro/Dev/Lrn (Elem. & Secondary)				4	11
EPSY	Educational Psychology	25	24	29	41	56
ERDG	Curriculum and Instruction - Elementary Literacy				8	15
ESPD	Endorsement - Special Education				1	2
ETLD	Endorsement - Teacher Linqst DVRSE				13	6
ILTA	Information and Learning Technologies, Instruction Design/Adult Learner					2
INLT	Information and Learning Technologies	78	99	113	114	107
LPRI	Licensure: School Principal				6	8
LSPY	Licensure: School Psychology				8	8
NWEA	Non-Degree - Access	1	4	2	3	
REND	Endorsement: Reading Teacher					2
SBIL	Curriculum and Instruction - Secondary Bilingual/ESL					6
SBIO	Curriculum and Instruction - Science - Biology				10	10
SCAP	Administration Supervision Curriculum Development - Access	22				
SCHM	Curriculum and Instruction - Science - Chemistry				1	1
SEGL	Curriculum and Instruction - English				24	35
SERT	Curriculum and Instruction - Science - Earth					1
SFLF	Curriculum and Instruction - Foreign Language - French				1	
SFLG	Curriculum and Instruction - Foreign Language - German				2	
SFLG	Curriculum and Instruction - Foreign Language - Spanish				2	
SFLS	Curriculum and Instruction - Foreign Language - Spanish					2
SMTH	Curriculum and Instruction - Mathematics				12	13
SPD1	Special Education - Teacher 1				24	43
SPD2	Special Education - Teacher 2				15	12
SPD3	Special Education - Teacher 3				2	1
SPED	Special Education	77	75	103	35	17
SPHY	Curriculum and Instruction - Science - Physics				2	1
SPSY	School Psychology	48	41	52	57	59
SRDG	Curriculum and Instruction - Secondary Literacy					2
SSCI	Curriculum and Instruction - Science - General				2	9
SSOC	Curriculum and Instruction - Social Studies				14	22
TCAP	Teacher Certification - Access	2	1	2		
TECE	Teacher Certification	51	43	34	10	8
XINL	Information and Learning Technologies - Executive	20	4	1		
XTEC	Teacher Certification	12	11	2		

(continued)

MAJOR CODE		Fall 2000	Fall 2001	Fall 2002	Fall 2003	Fall 2004
COLLEGE OF LIBERAL ARTS AND SCIENCES		542	546	595	615	645
AMEN	Applied Mathematics	49	58	57	58	65
ANTH	Anthropology	38	33	40	39	28
BIOL	Biology	25	19	24	25	26
BSCI	Basic Science	12	11			
CHEM	Chemistry	25	25	25	16	20
CMTH	Communication and Theatre			1		
COMM	Communication	14	12	32	22	16
ECON	Economics	52	50	37	34	41
ENGL	English	35	37	42	51	68
EVSC	Environmental Sciences	20	33	40	39	39
HBSC	Health and Behavioral Sciences	29	28	29	35	32
HIST	History	33	35	47	50	53
HUMN	Humanities	60	50	56	63	61
ISCI	Integrated Sciences			16	17	18
PSCI	Political Science	37	44	42	39	48
PSYC	Psychology	31	37	31	36	31
PUBH	Public Health	1				
SOCI	Sociology	17	14	23	35	27
SOCS	Social Science	40	34	24	35	52
TECH	Technical Communication	24	26	29	21	20
GRADUATE SCHOOL OF PUBLIC AFFAIRS		344	352	337	359	340
AMPA	Public Administration - Accelerated					1
CRJU	Criminal Justice	60	72	60	49	49
EXPA	Public Administration - Executive	6	13	14	26	27
PADM	Public Administration	204	196	201	218	208
PAWS	Public Administration - Western Slope	15	11	10	8	7
PAFF	Public Affairs	59	60	51	57	48
PADC	Public Administration - Certificate			1	1	
OTHER		634	667	743	678	535
	Other Units	6	3	4		
	Non-Degree	628	664	739	678	535
TOTAL		4,641	4,807	5,130	5,135	5,066

Notes:

1. The Master of Basic Science was renamed to Integrated Sciences in 2003
2. Data are end-of-term figures.

Source:

Office of Institutional Research, Planning & Analysis

**ETHNIC DISTRIBUTION OF HEADCOUNT STUDENTS
FALL SEMESTERS**

	ASIAN AMERICAN		AFRICAN AMERICAN		HISPANIC		NATIVE AMERICAN		MINORITY TOTAL		WHITE		NON-RES. ALIEN		TOTAL	
	N	%	N	%	N	%	N	%	N	%	N	%	N	%	N	%
FALL 2000	881	8%	383	3%	967	9%	115	1%	2,346	21%	7,966	72%	738	7%	11,050	100%
FALL 2001	887	8%	432	4%	957	8%	108	1%	2,384	21%	8,108	72%	789	7%	11,281	100%
FALL 2002	949	8%	420	4%	977	8%	116	1%	2,462	21%	8,620	73%	745	6%	11,827	100%
FALL 2003	973	8%	406	3%	1,046	9%	112	1%	2,537	21%	8,877	74%	556	5%	11,970	100%
FALL 2004	1,004	8%	428	3%	1,080	9%	105	1%	2,617	21%	9,207	75%	492	4%	12,316	100%

Notes:

1. Unknowns included in WHITE count.
2. N = student headcount
3. Data are end-of-term figures.

Source:

Enrollment Reports
Office of Institutional Research, Planning & Analysis

**AGE DISTRIBUTION
FALL 2004**

	UNDERGRADUATE			GRADUATE			TOTAL		
	N	%	CUM %	N	%	CUM %	N	%	CUM %
19 & Under	1,533	21.14%	21.14%	1	0.02%	0.02%	1,534	12.46%	12.46%
20-24	3,422	47.20%	68.34%	641	12.65%	12.67%	4,063	32.99%	45.44%
25-29	1,174	16.19%	84.54%	1,826	36.04%	48.72%	3,000	24.36%	69.80%
30-34	561	7.74%	92.28%	1,118	22.07%	70.79%	1,679	13.63%	83.44%
35-39	240	3.31%	95.59%	571	11.27%	82.06%	811	6.58%	90.02%
40-44	155	2.14%	97.72%	315	6.22%	88.27%	470	3.82%	93.84%
45-49	91	1.26%	98.98%	290	5.72%	94.00%	381	3.09%	96.93%
50-54	42	0.58%	99.56%	193	3.81%	97.81%	235	1.91%	98.84%
55-59	23	0.32%	99.88%	89	1.76%	99.57%	112	0.91%	99.75%
60 & over	9	0.12%	100.00%	22	0.43%	100.00%	31	0.25%	100.00%
TOTAL	7,250	100.00%	100.00%	5,066	100.00%	100.00%	12,316	100.00%	100.00%

AVERAGE AGE

24.3

32.7

27.7

Notes:

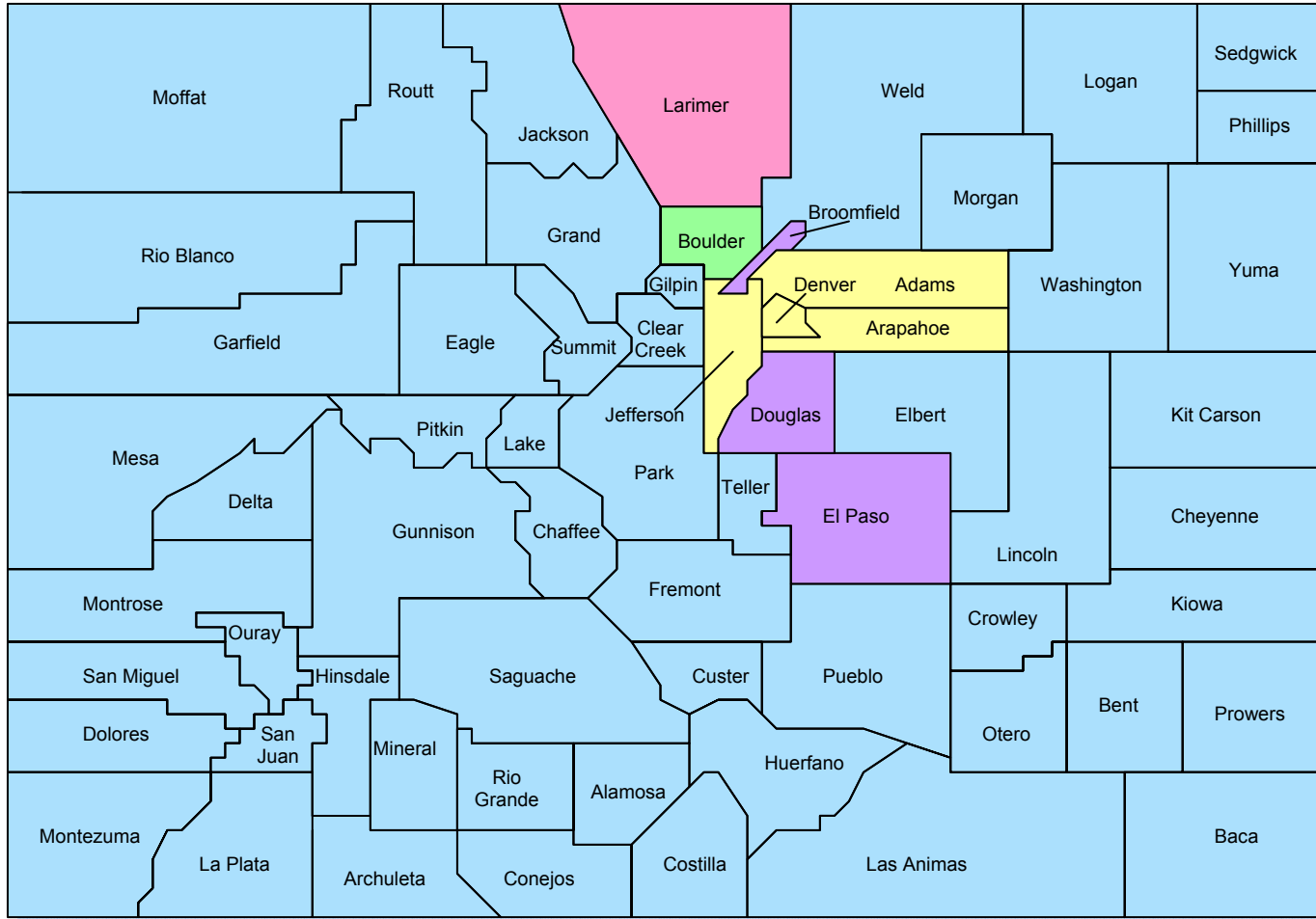
1. Data are end-of-term figures.
2. N = student headcount
3. CUM % = cumulative percent

Source:

Age Distribution Report
Office of Institutional Research, Planning & Analysis

Student Headcount by County

Fall, 2004



Outside Colorado ■

Unknown ■

Note: Residency identified by local zip code or permanent zip code if missing.

Legend

■ 1000 +

■ 500-999

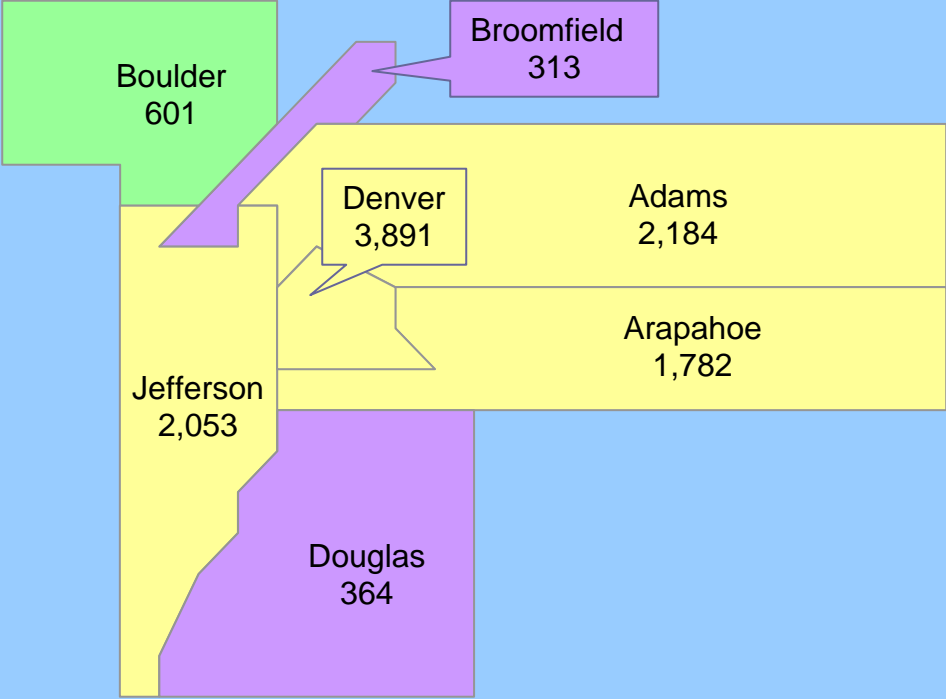
■ 100-499

■ 50-99

■ Less than 50

Student Headcount by Metro Denver County

Fall, 2004



Metro Denver total	11,188
Other Colorado	847
Outside of Colorado	187
Unknown	94
Total	12,316

Note: Residency identified by local zip code or permanent zip code if missing.

**AVERAGE STUDENT CREDIT HOUR LOAD
BY LEVEL FOR FALL SEMESTERS**

FALL SEMESTER/ QUARTER	UNDERGRADUATE			GRADUATE			TOTAL		
	<u>STUDENTS</u>	<u>SCH</u>	<u>AVG SCH PER HC</u>	<u>STUDENTS</u>	<u>SCH</u>	<u>AVG SCH PER HC</u>	<u>STUDENTS</u>	<u>SCH</u>	<u>AVG SCH PER HC</u>
2000	6,409	73,729	11.50	4,641	28,361	6.11	11,050	102,090	9.24
2001	6,474	74,489	11.51	4,807	30,391	6.32	11,281	104,880	9.30
2002	6,697	79,143	11.82	5,130	32,932	6.42	11,827	112,075	9.48
2003	6,835	80,553	11.79	5,135	33,549	6.53	11,970	114,102	9.53
2004	7,250	85,472	11.79	5,066	32,967	6.51	12,316	118,439	9.62

Notes:

1. Data are end-of-term figures.
2. SCH = Student Credit Hours
3. HC = Headcount students

Source:

Enrollment Reports
Office of Institutional Research, Planning & Analysis

**UNDERGRADUATE APPLICANTS BY ACADEMIC UNIT
FALL 2003 AND FALL 2004**

Academic Unit	APPLICATIONS			STUDENTS ADMITTED			STUDENTS REGISTERED		
	Fall 2003	Fall 2004	% Change 03 to 04	Fall 2003	Fall 2004	% Change 03 to 04	Fall 2003	Fall 2004	% Change 03 to 04
Arts & Media	583	672	15.3%	423	478	13.0%	289	312	8.0%
Freshmen	239	324	35.6%	150	215	43.3%	88	123	39.8%
Transfers	304	316	3.9%	237	236	-0.4%	177	167	-5.6%
Readmitted	40	32	-20.0%	36	27	-25.0%	24	22	-8.3%
Business	677	774	14.3%	376	498	32.4%	237	308	30.0%
Freshmen	275	310	12.7%	98	162	65.3%	45	68	51.1%
Transfers	368	414	12.5%	248	291	17.3%	170	210	23.5%
Readmitted	34	50	47.1%	30	45	50.0%	22	30	36.4%
Engineering	303	316	4.3%	142	165	16.2%	83	94	13.3%
Freshmen	178	174	-2.2%	77	87	13.0%	34	39	14.7%
Transfers	109	122	11.9%	51	62	21.6%	41	46	12.2%
Readmitted	16	20	25.0%	14	16	14.3%	8	9	12.5%
Liberal Arts	3,104	3,258	5.0%	2,321	2,469	6.4%	1,289	1,349	4.7%
Freshmen	1,468	1,565	6.6%	1,045	1,138	8.9%	494	502	1.6%
Transfers	1,429	1,475	3.2%	1,079	1,122	4.0%	675	715	5.9%
Readmitted	207	218	5.3%	197	209	6.1%	120	132	10.0%
Non-Degree	204	286	40.2%	185	275	48.6%	76	91	19.7%
New	141	220	56.0%	133	214	60.9%	57	73	28.1%
Readmitted	63	66	4.8%	52	61	17.3%	19	18	-5.3%
TOTAL	4,871	5,306	8.9%	3,447	3,885	12.7%	1,974	2,154	9.1%
New	4,511	4,920	9.1%	3,118	3,527	13.1%	1,781	1,943	9.1%
Former	360	386	7.2%	329	358	8.8%	193	211	9.3%

Notes:

"Students Registered" are end-of-term figures.

Source:

Final Fall 2004 Admissions Report
Office of Admissions and Records

**FY FTE STUDENTS BY SCHOOL/COLLEGE AND DEPARTMENT
1999-00 THROUGH 2003-04**

	<u>1999-00</u>	<u>2000-01</u>	<u>2001-02</u>	<u>2002-03</u>	<u>2003-04</u>
ARCHITECTURE AND PLANNING¹	354.3	342.1	337.3	360.9	393.7
ARTS AND MEDIA	453.5	525.7	583.1	681.0	743.0
BUSINESS	1430.3	1462.0	1527.8	1608.6	1569.2
LIBERAL ARTS AND SCIENCES	3486.6	3688.4	3879.9	4092.5	4197.0
Anthropology	149.3	151.5	155.3	162.1	168.9
Biology	288.6	283.0	279.4	330.5	374.5
Chemistry	216.0	218.7	205.0	235.4	252.3
Chinese	8.5	7.5	11.7	7.4	6.7
Chinese Studies	0.0	3.7	6.7	6.6	3.4
CLAS	2.7	7.1	7.1	3.8	3.4
Communication	235.3	261.4	309.0	338.8	334.8
Economics	195.4	226.8	246.4	249.0	259.2
English	426.5	433.7	448.8	480.1	503.1
Environmental Sciences	33.2	33.9	41.5	42.7	47.7
Ethnic Studies	17.7	16.5	19.0	21.9	24.8
French	40.7	38.1	47.1	44.9	29.4
Geography	52.4	55.4	59.9	66.6	79.9
Geology	36.4	34.3	37.9	40.3	42.5
German	28.6	28.5	28.9	28.2	24.0
Health and Behavioral Sciences	11.1	14.8	11.4	14.8	15.7
History	158.0	179.9	186.6	192.5	207.9
Humanities	9.1	9.5	7.1	8.6	12.8
Latin	5.2	4.1	11.0	14.3	5.8
Mathematics	403.6	419.3	445.9	461.8	445.1
Philosophy	183.4	196.0	194.9	191.7	184.7
Physics	163.5	178.1	188.7	172.3	183.0
Political Science	143.5	165.3	192.1	203.2	217.8
Psychology	314.8	332.3	337.4	340.4	367.0
Religious Studies	0.0	7.5	20.5	20.6	22.6
Russian	17.8	17.2	11.1	9.4	3.3
Social Science	6.4	6.1	5.6	6.2	11.4
Sociology	180.8	182.7	194.8	219.0	244.9
Spanish	139.4	152.3	165.4	177.4	120.4
Technical Communication	18.7	23.2	3.7	2.0	0.0
EDUCATION	724.0	723.7	800.5	902.4	959.0
ENGINEERING	642.7	649.2	575.9	572.1	533.5
MILLENNIUM COLLEGE	8.9	9.3	8.9	9.1	10.1
PUBLIC AFFAIRS	152.2	170.6	179.7	181.9	174.3
CU-DENVER TOTALS	7252.5	7571.0	7893.1	8408.5	8579.8

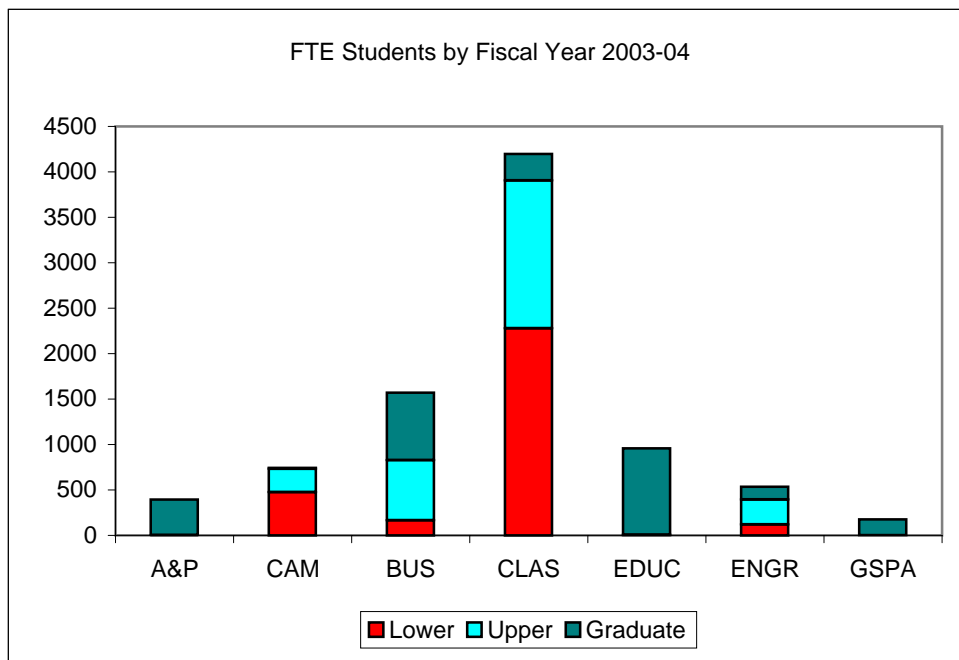
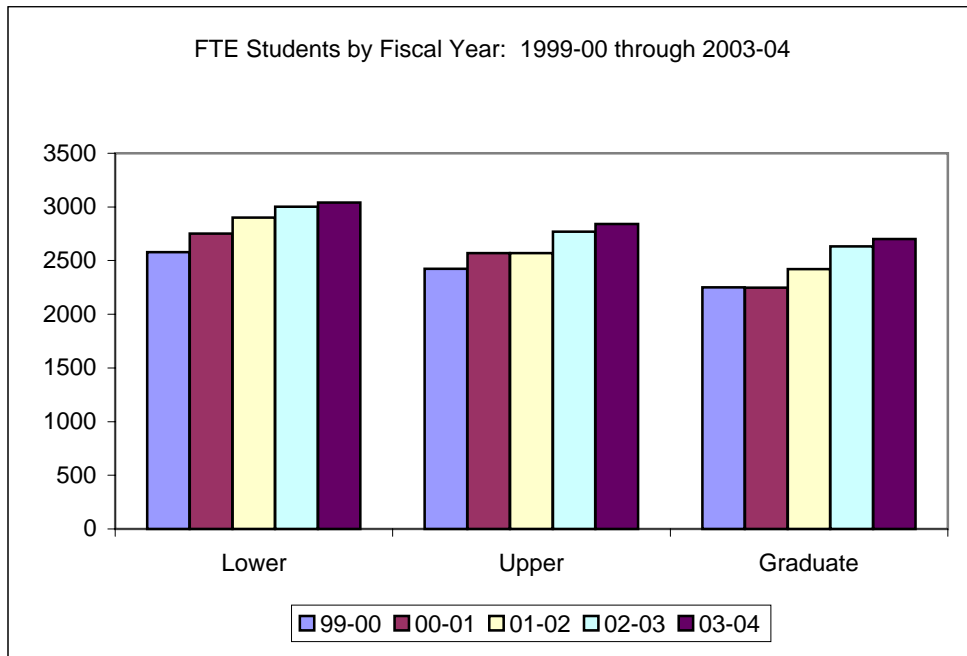
Notes:

1. Architecture & Planning does not include students from the undergraduate Environmental Design program taught in Boulder.

Source:

Student Credit Hour Summaries, Office of Institutional Research, Planning & Analysis

FY FTE STUDENTS BY LEVEL OF INSTRUCTION



Notes:

1. Architecture & Planning does not include students from the undergraduate Environmental Design program taught in Boulder.
2. Arts, Fine Arts, Music and Theatre were transferred into Arts & Media FY 1997-98.

Source:

Student Credit Hours Summaries
Office of Institutional Research, Planning & Analysis

**FY FTE STUDENTS
BY SCHOOL/COLLEGE AND LEVEL OF INSTRUCTION**

	<u>Lower UG</u>	<u>Upper UG</u>	<u>Total UG</u>	<u>Grad I</u>	<u>Grad II</u>	<u>Total Grad</u>	<u>Total</u>
ARCHITECTURE & PLANNING							
1999-00	0.0	0.9	0.9	344.9	8.5	353.4	354.3
2000-01	0.0	0.6	0.6	333.6	7.8	341.4	342.0
2001-02	0.0	0.2	0.2	328.4	8.7	337.1	337.3
2002-03	0.0	0.8	0.8	349.4	10.7	360.1	360.9
2003-04	0.0	1.9	1.9	381.4	10.4	391.8	393.7
ARTS & MEDIA							
1999-00	306.2	140.1	446.3	7.2	0.0	7.2	453.5
2000-01	349.6	169.2	518.8	6.9	0.0	6.9	525.7
2001-02	369.2	204.7	573.9	9.1	0.0	9.1	583.0
2002-03	428.6	242.5	671.1	9.9	0.0	9.9	681.0
2003-04	475.5	257.6	733.1	9.9	0.0	9.9	743.0
BUSINESS							
1999-00	165.3	594.2	759.5	670.8	0.0	670.8	1430.3
2000-01	170.9	634.1	805.0	657.0	0.0	657.0	1462.0
2001-02	178.5	644.9	823.4	704.4	0.0	704.4	1527.8
2002-03	171.7	676.6	848.3	759.2	1.1	760.3	1608.6
2003-04	166.7	660.5	827.2	739.5	2.5	742.0	1569.2
LIBERAL ARTS & SCIENCES							
1999-00	1941.5	1321.7	3263.2	206.2	17.2	223.4	3486.6
2000-01	2059.5	1394.9	3454.4	217.1	17.1	234.2	3688.6
2001-02	2211.6	1404.4	3616.0	248.0	15.9	263.9	3879.9
2002-03	2263.0	1550.8	3813.8	261.5	15.2	276.7	4090.5
2003-04	2278.9	1626.9	3905.8	271.1	20.1	291.2	4197.0
EDUCATION							
1999-00	0.0	10.5	10.5	672.0	41.5	713.5	724.0
2000-01	0.0	5.4	5.4	672.8	45.6	718.4	723.8
2001-02	0.0	1.3	1.3	758.1	41.1	799.2	800.5
2002-03	0.0	4.9	4.9	857.1	40.4	897.5	902.4
2003-04	0.0	8.4	8.4	907.4	43.2	950.6	959.0
ENGINEERING							
1999-00	165.2	346.0	511.2	129.1	2.4	131.5	642.7
2000-01	171.9	356.5	528.4	116.9	3.9	120.8	649.2
2001-02	142.1	306.6	448.7	124.6	2.6	127.2	575.9
2002-03	139.0	286.2	425.2	143.9	3.0	146.9	572.1
2003-04	118.3	274.4	392.7	133.8	7.0	140.8	533.5
PUBLIC AFFAIRS							
1999-00	0.0	0.0	0.0	126.5	25.7	152.2	152.2
2000-01	0.0	0.0	0.0	143.7	26.9	170.6	170.6
2001-02	0.0	0.0	0.0	155.2	24.5	179.7	179.7
2002-03	0.0	0.0	0.0	157.0	24.9	181.9	181.9
2003-04	0.0	0.0	0.0	151.7	22.6	174.3	174.3
MILLENNIUM COLLEGE							
1999-00	0.0	8.9	8.9	0.0	0.0	0.0	8.9
2000-01	0.0	9.3	9.3	0.0	0.0	0.0	9.3
2001-02	0.0	8.9	8.9	0.0	0.0	0.0	8.9
2002-03	0.0	9.1	9.1	0.0	0.0	0.0	9.1
2003-04	0.0	10.1	10.1	0.0	0.0	0.0	10.1
CU-DENVER TOTALS							
1999-00	2578.2	2422.3	5000.5	2156.7	95.3	2252.0	7252.5
2000-01	2751.9	2570.0	5321.9	2148.0	101.3	2249.3	7571.2
2001-02	2901.4	2571.0	5472.4	2327.8	92.8	2420.6	7893.0
2002-03	3002.3	2770.9	5773.2	2538.0	95.3	2633.3	8406.5
2004-04	3039.4	2839.8	5879.2	2594.8	105.8	2700.6	8579.8

Notes:

1. Architecture & Planning does not include students from the undergraduate Environmental Design program taught in Boulder.

Source:

Student Credit Hour Summaries, Office of Institutional Research, Planning & Analysis

**FTE STUDENTS BY SCHOOL/COLLEGE,
DEPARTMENT AND LEVEL OF INSTRUCTION
FISCAL YEAR 2003-04**

	<u>Lower UG</u>	<u>Upper UG</u>	<u>Total UG</u>	<u>Grad I</u>	<u>Grad II</u>	<u>Total Grad</u>	<u>TOTAL</u>
ARCHITECTURE AND PLANNING¹	0.0	1.9	1.9	381.4	10.4	391.8	393.7
ARTS AND MEDIA	475.5	257.6	733.1	9.9	0.0	9.9	743.0
BUSINESS SCHOOL	166.7	660.5	827.2	739.5	2.5	742.0	1569.2
LIBERAL ARTS AND SCIENCES	2278.9	1626.9	3905.8	271.1	20.1	291.2	4197.0
Anthropology	83.3	70.7	154.0	14.9	0.0	14.9	168.9
Biology	171.7	182.5	354.2	20.3	0.0	20.3	374.5
Chemistry	145.3	100.3	245.6	6.7	0.0	6.7	252.3
Chinese	6.7	0.0	6.7	0.0	0.0	0.0	6.7
Chinese Studies	3.4	0.0	3.4	0.0	0.0	0.0	3.4
CLAS	1.0	2.4	3.4	0.0	0.0	0.0	3.4
Communication	158.3	152.9	311.2	23.6	0.0	23.6	334.8
Economics	149.2	88.5	237.7	21.5	0.0	21.5	259.2
English	262.7	212.2	474.9	28.2	0.0	28.2	503.1
Environmental Sciences	38.6	0.0	38.6	9.1	0.0	9.1	47.7
Ethnic Studies	4.3	20.5	24.8	0.0	0.0	0.0	24.8
French	21.0	8.4	29.4	0.0	0.0	0.0	29.4
Geography	42.2	34.2	76.4	3.5	0.0	3.5	79.9
Geology	33.7	8.4	42.1	0.4	0.0	0.4	42.5
German	19.5	4.5	24.0	0.0	0.0	0.0	24.0
Health and Behavioral Sciences	0.0	1.1	1.1	1.1	13.5	14.6	15.7
History	77.6	99.5	177.1	30.8	0.0	30.8	207.9
Humanities	0.0	3.4	3.4	9.4	0.0	9.4	12.8
Latin	5.8	0.0	5.8	0.0	0.0	0.0	5.8
Mathematics	307.1	104.3	411.4	27.1	6.6	33.7	445.1
Philosophy	129.8	49.4	179.2	5.5	0.0	5.5	184.7
Physics	175.0	8.0	183.0	0.0	0.0	0.0	183.0
Political Science	59.7	136.2	195.9	21.9	0.0	21.9	217.8
Psychology	192.9	155.8	348.7	18.3	0.0	18.3	367.0
Religious Studies	3.5	19.1	22.6	0.0	0.0	0.0	22.6
Russian	3.3	0.0	3.3	0.0	0.0	0.0	3.3
Social Science	0.0	0.0	0.0	11.4	0.0	11.4	11.4
Sociology	85.6	142.9	228.5	16.4	0.0	16.4	244.9
Spanish	97.7	21.7	119.4	1.0	0.0	1.0	120.4
EDUCATION	0.0	8.4	8.4	907.4	43.2	950.6	959.0
ENGINEERING	118.3	274.4	392.7	133.8	7.0	140.8	533.5
MILLENNIUM COLLEGE	0.0	10.1	10.1	0.0	0.0	0.0	10.1
PUBLIC AFFAIRS	0.0	0.0	0.0	151.7	22.6	174.3	174.3
CU-DENVER TOTALS	3039.4	2839.8	5879.2	2594.8	105.8	2700.6	8579.8

Notes:

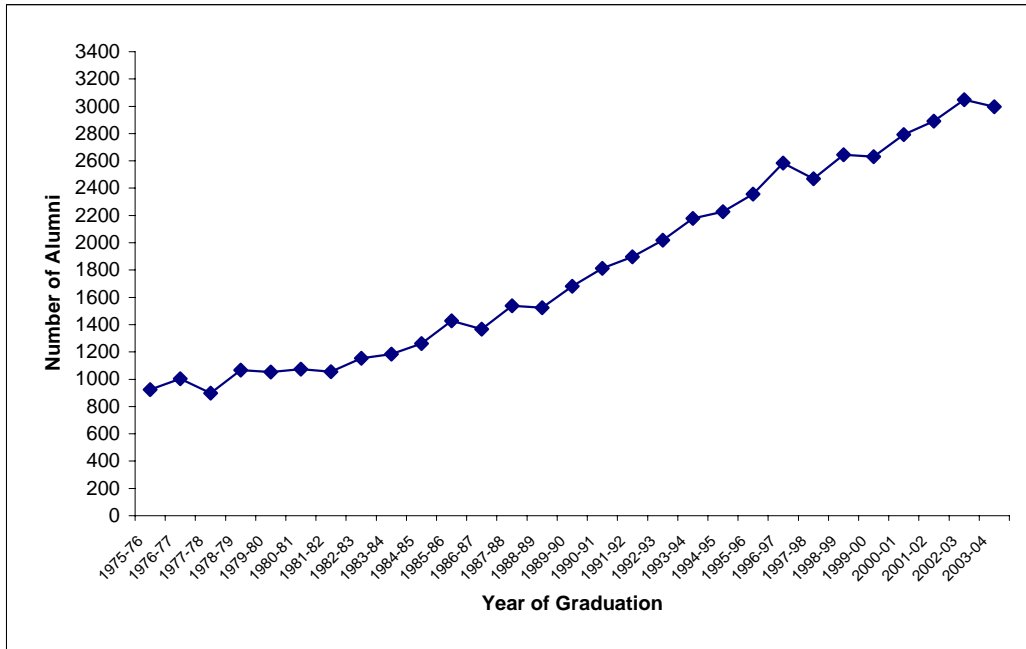
1. Architecture & Planning does not include students from the undergraduate Environmental Design program taught in Boulder.

Source:

Student Credit Hour Summaries, Office of Institutional Research, Planning & Analysis

Section III.
Alumni Data

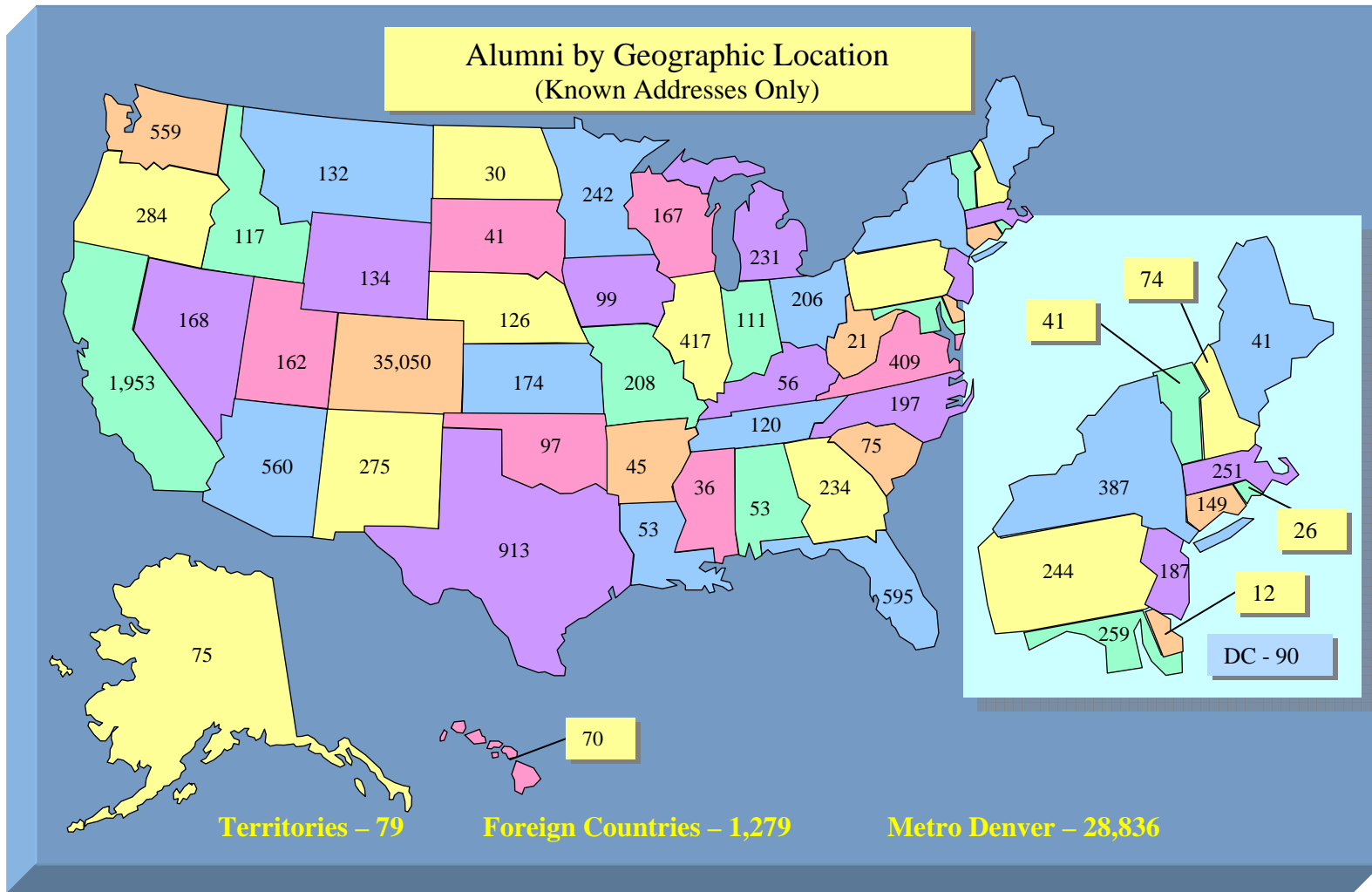
ALUMNI BY YEAR OF GRADUATION



YEAR OF GRADUATION	NUMBER OF ALUMNI
Before 1975	5,053
1975-80	4,943
1980-81	1,074
1981-82	1,055
1982-83	1,154
1983-84	1,185
1984-85	1,261
1985-86	1,428
1986-87	1,366
1987-88	1,538
1988-89	1,524
1989-90	1,681
1990-91	1,813
1991-92	1,897
1992-93	2,018
1993-94	2,179
1994-95	2,228
1995-96	2,357
1996-97	2,584
1997-98	2,468
1998-99	2,645
1999-00	2,631
2000-01	2,792
2001-02	2,892
2002-03	3,049
2003-04	2,996
TOTAL	57,811

Source:

University of Colorado Foundation Counts Reports for years prior to 1975-76
 CCHE Degree Programs Offered and Certificates & Degrees Conferred for 1975-76 and later



Data Source : University of Colorado Foundation Data Services

**ALUMNI BY DEGREES
CUMULATIVE 1975-76 THROUGH 2003-04**

	<u>Undergraduate</u>	<u>Graduate</u>	<u>Total</u>
ARCHITECTURE & PLANNING		3,027	3,027
Architecture		1,613	1,613
Design and Planning		9	9
Design Studies		1	1
Interior Design		48	48
Landscape Architecture		416	416
Urban and Regional Planning		793	793
Urban Design		147	147
ARTS & MEDIA	489	5	494
Fine Arts	177	0	177
Fine Arts-BFA	91	0	91
Music	179	0	179
Recording Arts	0	5	5
Theatre	32	0	32
Theatre, Film & Television-BA	7	0	7
Theatre, Film & Television-BFA	3		3
BUSINESS	7,103	9,374	16,477
Accounting	0	554	554
Business Administration	7,103	5,611	12,714
Computer Science & Info. Systems	0	0	0
Finance	0	948	948
Health Administration	0	567	567
Information Systems	0	849	849
International Business	0	101	101
Management and Organization	0	382	382
Management Science	0	45	45
Marketing	0	317	317
EDUCATION	284	7,456	7,740
Admin. Leadership and Policy Studies	0	610	610
Counseling Psych. and Counselor Educ.	0	1,576	1,576
Curriculum and Instruction	0	2,345	2,345
Early Childhood Education	0	380	380
Educational Leadership and Innovation	0	142	142
Educational Psychology	0	287	287
Elementary Education	178	307	485
Information and Learning Technologies	0	708	708
Reading	0	242	242
Rehabilitation Services	89	0	89
School Psychology	0	84	84
Secondary Education	17	279	296
Social Foundations	0	34	34
Special Education	0	462	462
ENGINEERING	4,138	1,408	5,546
Applied Mathematics	83	0	83
Civil Engineering	1,060	500	1,560
Computer Science	69	335	404
Computer Science and Engineering	579	0	579
Computer Science & Info. Systems	0	0	0
Electrical Engineering	1,498	343	1,841
Engineering	0	87	87
Mechanical Engineering	849	143	992

ALUMNI BY DEGREES
CUMULATIVE 1975-76 THROUGH 2003-04
(continued)

LIBERAL ARTS & SCIENCES	13,808	3,176	16,984
Anthropology	366	145	511
Applied Mathematics	0	254	254
Biology	1,530	171	1,701
Chemistry	339	100	439
Communication	598	35	633
Communication and Theatre	829	137	966
Communication Disorders Speech Science	0	30	30
Distributed Studies	88	0	88
Economics	1,058	329	1,387
English	783	211	994
English Writing Program	492	0	492
Environmental Sciences	0	169	169
Ethnic Studies	28	0	28
Fine Arts	536	0	536
French	146	0	146
Geography	178	8	186
Geology	278	0	278
German	67	0	67
Health and Behavioral Sciences	0	25	25
History	638	186	824
Humanities	0	213	213
Individually Structured Major	599	0	599
Master of Integrated Sciences	0	105	105
Mathematics	612	24	636
Music	364	0	364
Philosophy	221	0	221
Physics	90	0	90
Political Science	1,021	181	1,202
Population Dynamics	14	0	14
Psychology	2,108	381	2,489
Psychology-BS	91	0	91
Social Science	0	185	185
Sociology	516	137	653
Spanish	171	0	171
Technical Communication	0	142	142
Urban Studies	47	8	55
PUBLIC AFFAIRS		2,490	2,490
Criminal Justice		365	365
Public Administration		2,028	2,028
Public Affairs		97	97
CU-DENVER TOTAL	25,822	26,936	52,758

Source:

University of Colorado at Denver Degrees Conferred Reports and Foundation Reports

Section IV.
Degree Data

**CCHE Approved Degree Programs (2003-04 Academic Year)
DEGREES OFFERED BY SCHOOL/COLLEGE AND PROGRAM**

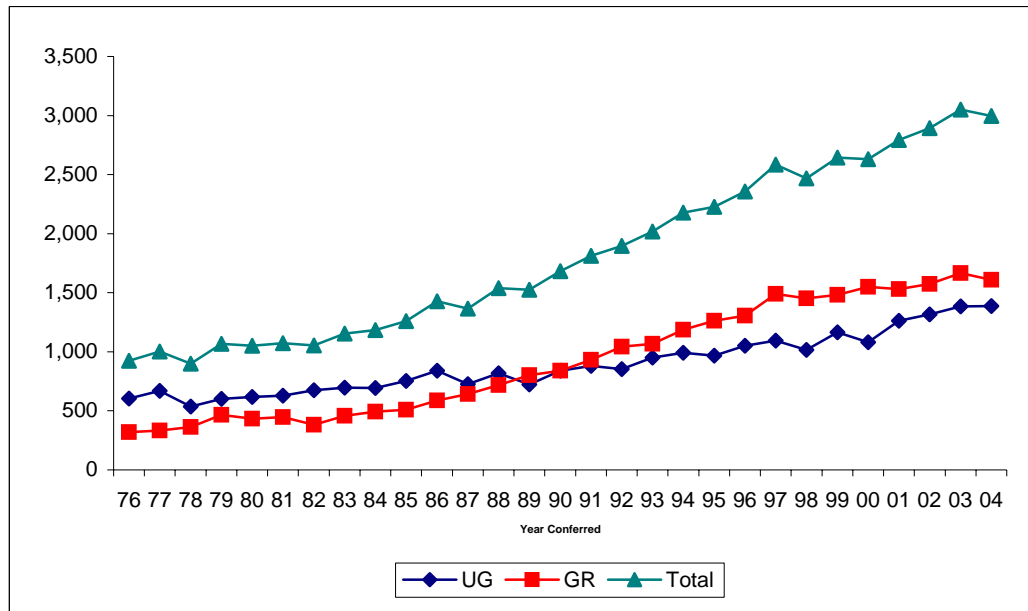
<u>School/ College</u>	<u>CIP 2000</u>	<u>CIP 1990</u>	<u>School/College/Program</u>	<u>Bachelor</u>	<u>Master</u>	<u>Doctorate</u>	<u>Other</u>
COLLEGE OF ARCHITECTURE & PLANNING							
	04.0201	04.0201	Architecture		M.ARCH		
	04.0401	04.0401	Design and Planning			PH.D.	
	04.0601	04.0601	Landscape Architecture		M.LA		
	04.0301	04.0301	Urban and Regional Planning		M.URP		
	04.0301	04.0701	Urban Design		M.UD		
COLLEGE OF ARTS & MEDIA							
	50.0702	50.0701	Fine Arts	BA/BFA			
	50.0901	50.0901	Music	BS			
	50.9999	50.9999	Recording Arts		MS		
	50.0501	50.0501	Theatre, Film, & Television	BA/BFA			
COLLEGE OF BUSINESS							
	52.0301	52.0301	Accounting		MS		
	52.0201	52.0201	Business Administration	BS	MBA		
	11.0101	11.0101	Computer Science & Information Systems			PH.D.	
	52.0801	52.0801	Finance		MS		
	51.0701	51.0701	Health Administration		MS		
	11.0401	11.0401	Information Systems		MS		
	52.1101	52.1101	International Business		MSIB		
	52.1003	52.1003	Management and Organization		MS		
	52.1401	52.1401	Marketing		MS		
COLLEGE OF LIBERAL ARTS & SCIENCES							
	45.0201	45.0201	Anthropology	BA	MA		
	27.0301	27.0301	Applied Mathematics		MS	PH.D.	
	26.0101	26.0101	Biology	BS	MS		
	40.0501	40.0501	Chemistry	BS	MS		
	09.0101	09.0101	Communication	BA	MA		
	45.0601	45.0601	Economics	BA	MA		
	23.0101	23.0101	English	BA	MA		
	23.0401	23.0401	English Writing Program	BA			
	3.0104	03.0102	Environmental Sciences		MS		
	16.0901	16.0901	French	BA			
	45.0701	45.0701	Geography	BA			
	30.1701	30.9999	Health and Behavioral Sciences			PH.D.	
	54.0101	45.0801	History	BA	MA		
	24.0103	24.0103	Humanities		MH		
	30.9999	30.9999	Individually Structured Major	BA			
	16.0501		International Studies	BA			
	30.0101	30.0101	Master of Integrated Sciences		MIS		
	27.0101	27.0101	Mathematics	BS			
	38.0101	38.0101	Philosophy	BA			
	40.0801	40.0801	Physics	BS			
	45.1001	45.1001	Political Science	BA	MA		
	42.0101	42.0101	Psychology	BA	MA		
	42.1101	42.1101	Psychology	BS			
	45.0101	45.0101	Social Science		MSS		
	45.1101	45.1101	Sociology	BA	MA		
	16.0905	16.0905	Spanish	BA	MA		
	23.1101	23.1101	Technical Communication		MS		
SCHOOL OF EDUCATION							
	13.0401	13.0401	Administrative Leadership and Policy Studies		MA		ED.S
	13.1101	13.1101	Counseling Psychology and Counselor Educ.		MA		
	13.0301	13.0301	Curriculum and Instruction		MA		
	13.1210	13.1204	Early Childhood Education		MA		
	13.0401	13.0401	Educational Leadership and Innovation			PH.D.	
	42.1801	13.0802	Educational Psychology		MA		
	25.0101	25.0101	Information and Learning Technologies		MA		
	42.1701	42.1701	School Psychology				ED.S
	13.1001	13.1001	Special Education		MA		
COLLEGE OF ENGINEERING & APPLIED SCIENCE							
	14.0801	14.0801	Civil Engineering	BS	MS	PH.D.	
	11.0101	11.0101	Computer Science		MS		
	11.0101	11.0101	Computer Science & Information Systems			PH.D.	
	11.0101	11.0701	Computer Science and Engineering	BS			
	14.1001	14.1001	Electrical Engineering	BS	MS		
	14.0101	14.0101	Engineering		M.Eng.		
	14.1901	14.1901	Mechanical Engineering	BS	MS		
GRADUATE SCHOOL OF PUBLIC AFFAIRS							
	43.0103	43.0103	Criminal Justice		MCJ		
	44.0401	44.0401	Public Administration		MPA		
	44.0401	44.0401	Public Affairs			PH.D.	

Notes: The degree program name for the Master of Basic Science was changed to Master of Integrated Sciences in 2002.

The Master of Arts in Biology was changed to a Master of Science effective May 2004

Source: CCHE Approved Postsecondary Degree and Certificate Programs

**DEGREES CONFERRED
1975-76 THROUGH 2003-04**



Year	Bacc.	Master	Doctorate	Ed.S.	Total
1975-76	604	319			923
1976-77	670	333			1,003
1977-78	537	362			899
1978-79	601	465			1,066
1979-80	619	433			1,052
1980-81	628	444	2		1,074
1981-82	674	380	1		1,055
1982-83	695	456	3		1,154
1983-84	693	485	7		1,185
1984-85	753	503	5		1,261
1985-86	839	582	7		1,428
1986-87	725	637	4		1,366
1987-88	819	711	8		1,538
1988-89	723	778	23		1,524
1989-90	841	817	22	1	1,681
1990-91	881	906	21	5	1,813
1991-92	853	1,025	16	3	1,897
1992-93	950	1,035	26	7	2,018
1993-94	992	1,174	12	1	2,179
1994-95	966	1,243	18	1	2,228
1995-96	1,052	1,273	26	6	2,357
1996-97	1,094	1,459	28	3	2,584
1997-98	1,017	1,424	25	2	2,468
1998-99	1,164	1,437	38	6	2,645
1999-00	1,082	1,517	25	7	2,631
2000-01	1,262	1,469	29	32	2,792
2001-02	1,317	1,517	39	19	2,892
2002-03	1,384	1,617	32	16	3,049
2003-04	1,387	1,556	33	20	2,996
Total	25,822	26,357	450	129	52,758

Source: CCHE Degrees Awarded Reports

**DEGREES CONFERRED BY GENDER
2003-04**

	Undergraduate			Graduate			Total		
	Male	Female	Total	Male	Female	Total	Male	Female	Total
ARCHITECTURE & PLANNING				67	46	113	67	46	113
Architecture				36	27	63	36	27	63
Design and Planning				1	2	3	1	2	3
Landscape Architecture				13	10	23	13	10	23
Urban and Regional Planning				13	7	20	13	7	20
Urban Design				4	0	4	4	0	4
ARTS & MEDIA	60	51	111	4	1	5	64	52	116
Fine Arts	1	11	12				1	11	12
Fine Arts-BFA	19	24	43				19	24	43
Music	33	13	46				33	13	46
Recording Arts				4	1	5	4	1	5
Theatre, Film, & Television-BA	5	2	7				5	2	7
Theatre, Film, & Television-BFA	2	1	3				2	1	3
BUSINESS	152	182	334	402	235	637	554	417	971
Accounting				16	18	34	16	18	34
Business Administration	152	182	334	257	145	402	409	327	736
Computer Science & Info. Systems						0	0	0	0
Finance				55	22	77	55	22	77
Health Administration				4	2	6	4	2	6
Information Systems				50	21	71	50	21	71
International Business				6	7	13	6	7	13
Management and Organization				5	6	11	5	6	11
Marketing				9	14	23	9	14	23
LIBERAL ARTS & SCIENCES	258	550	808	75	101	176	333	651	984
Anthropology	4	12	16	2	9	11	6	21	27
Applied Mathematics				9	5	14	9	5	14
Biology	31	60	91	2	2	4	33	62	95
Chemistry	1	9	10	3	3	6	4	12	16
Communication	42	115	157	2	5	7	44	120	164
Economics	48	81	129	14	8	22	62	89	151
English	8	20	28	5	6	11	13	26	39
English Writing Program	8	17	25				8	17	25
Environmental Sciences				5	4	9	5	4	9
French	5	7	12				5	7	12
Geography	4	7	11				4	7	11
Geology	5	3	8				5	3	8
German	3	4	7				3	4	7
Health and Behavioral Sciences				0	7	7	0	7	7
History	14	15	29	6	7	13	20	22	42
Humanities				8	7	15	8	7	15
Individually Structured Major	10	9	19				10	9	19
Master of Integrated Sciences				0	3	3	0	3	3
Mathematics	6	7	13				6	7	13
Philosophy	7	11	18				7	11	18
Physics	2	0	2				2	0	2
Political Science	28	26	54	6	10	16	34	36	70
Psychology	17	96	113	5	10	15	22	106	128
Psychology-BS	5	18	23				5	18	23
Social Science				2	5	7	2	5	7
Sociology	7	27	34	1	7	8	8	34	42
Spanish	3	6	9				3	6	9
Technical Communication				5	3	8	5	3	8
EDUCATION				60	362	422	60	362	422
Admin. Leadership and Policy Studies				7	18	25	7	18	25
Counseling Psych. and Counselor Educ.				6	39	45	6	39	45
Curriculum and Instruction				17	148	165	17	148	165
Early Childhood Education				2	22	24	2	22	24
Educational Leadership and Innovation				3	15	18	3	15	18
Educational Psychology				3	36	39	3	36	39
Information and Learning Technologies				11	48	59	11	48	59
School Psychology				3	14	17	3	14	17
Special Education				8	22	30	8	22	30
ENGINEERING	105	29	134	81	24	105	186	53	239
Civil Engineering	22	3	25	18	5	23	40	8	48
Computer Science				30	12	42	30	12	42
Computer Science & Info. Systems				0	0	0	0	0	0
Computer Science and Engineering	41	20	61				41	20	61
Electrical Engineering	25	4	29	15	1	16	40	5	45
Engineering				10	3	13	10	3	13
Mechanical Engineering	17	2	19	8	3	11	25	5	30
PUBLIC AFFAIRS				76	75	151	76	75	151
Criminal Justice				22	18	40	22	18	40
Public Administration				53	56	109	53	56	109
Public Affairs				1	1	2	1	1	2
CU-DENVER TOTAL	575	812	1,387	765	844	1,609	1,340	1,656	2,996

Note: The degree program name for the Master of Basic Science was changed to Master of Integrated Sciences in 2002.

Source: CCHE Degrees Awarded Reports

DEGREES CONFERRED BY ETHNICITY 2003-04

	Undergraduate							Graduate						
	Afr. Asian	Afr. Amer.	Hisp.	Nat. Amer.	White ¹	NonRes. Alien	Total	Afr. Asian	Afr. Amer.	Hisp.	Nat. Amer.	White ¹	NonRes. Alien	Total
ARCHITECTURE & PLANNING								3	0	9	2	86	13	113
Architecture								3		4	1	46	9	63
Design and Planning											2	1	3	
Landscape Architecture										1	21	1	23	
Urban and Regional Planning										3	16	1	20	
Urban Design										1	1	1	4	
ARTS & MEDIA	11	4	10	2	82	2	111	0	1	0	0	4	0	5
Fine Arts			1		11		12							
Fine Arts-BFA	6	2	6	1	28	0	43							
Music	5	2	3	1	33	2	46							
Recording Arts									1			4		5
Theatre, Film, & Television-BA					7		7							
Theatre, Film, & Television-BFA					3		3							
BUSINESS	42	12	32	0	216	32	334	42	7	14	10	455	109	637
Accounting								5		2	1	23	3	34
Business Administration	42	12	32		216	32	334	22	5	8	5	319	43	402
Computer Science & Info. Systems														0
Finance								7	1	1	2	44	22	77
Health Administration												5	1	6
Information Systems								7				41	23	71
International Business										1		6	6	13
Management and Organization									1	2		5	3	11
Marketing								1			2	12	8	23
LIBERAL ARTS & SCIENCES	35	26	69	6	497	175	808	4	4	6	2	133	27	176
Anthropology			4		12		16	1				9	1	11
Applied Mathematics								1		1		10	2	14
Biology	7	3	9	1	69	2	91					3	1	4
Chemistry	1	1	2		6		10					4	2	6
Communication	6	3	18	1	83	46	157			1		5	1	7
Economics	1		1		15	112	129				1	10	11	22
English			1		26	1	28			1		10		11
English Writing Program	4	2			19		25							
Environmental Sciences									1			5	3	9
French	1	1	1		9		12							
Geography					11		11							
Geology					8		8							
German					7		7							
Health and Behavioral Sciences												6	1	7
History	1		3		25		29			1		12		13
Humanities										1	1	13		15
Individually Structured Major	1		1		9	8	19					0		
Master of Integrated Sciences												1	2	3
Mathematics	1	2	3		7		13							
Philosophy			1	1	16		18							
Physics					2		2							
Political Science	2	2	6	1	43		54		2			14		16
Psychology	4	8	14	1	84	2	113					14	1	15
Psychology-BS	2				20	1	23							
Social Science								1				5	1	7
Sociology	4	4	2	1	21	2	34			1		6	1	8
Spanish			3		5	1	9							
Technical Communication								1	1			6		8
EDUCATION								6	4	40	0	366	6	422
Admin. Leadership and Policy Studies									1	3		21		25
Counseling Psych. and Counselor Educ.								1	1	3		40		45
Curriculum and Instruction								3	1	19		140	2	165
Early Childhood Education										3		21		24
Educational Leadership and Innovation										4		14		18
Educational Psychology										1		29		30
Information and Learning Technologies								2		5		50	2	59
School Psychology									1			23	2	26
Special Education										2		28		30
ENGINEERING	23	5	7	3	83	13	134	15	3	5	2	54	26	105
Civil Engineering	1		3		19	2	25	3		3		14	3	23
Computer Science								8			1	20	13	42
Computer Science & Info. Systems														0
Computer Science and Engineering	20	3	1	2	31	4	61							0
Electrical Engineering	1	2	2	1	17	6	29	3	1	1		7	4	16
Engineering									2			9	2	13
Mechanical Engineering	1		1		16	1	19	1		1	1	4	4	11
PUBLIC AFFAIRS								3	5	13	2	115	13	151
Criminal Justice								0	1	2	2	33	2	40
Public Administration								3	4	11		80	11	109
Public Affairs												2		2
CU-DENVER TOTAL	111	47	118	11	878	222	1,387	73	24	87	18	1,213	194	1,609

Notes:

1. Students with unknown ethnicity are included under "White" count.

**DEGREES CONFERRED BY SCHOOL/COLLEGE
1999-00 THROUGH 2003-04**

CIP Code 2000	1999-00				2000-01				2001-02				2002-03				2003-04			
	B	M	Ed S	D	B	M	Ed S	D	B	M	Ed S	D	B	M	Ed S	D	B	M	Ed S	D
ARCHITECTURE & PLANNING	0	145	0	0	0	140	0	0	0	128	0	2	0	142	0	4	0	110	0	3
4.0201 Architecture		86				79				73				68				63		
4.0401 Design and Planning												2				4				3
4.0601 Landscape Architecture			24			27				13				25				23		
4.0301 Urban and Regional Planning			31			31				37				42				20		
4.0301 Urban Design			3			3				5				7				4		
4.9999 Design Studies			1																	
ARTS & MEDIA	58	0	0	0	62	0	0	0	100	0	0	0	107	0	0	0	111	5	0	0
50.0702 Fine Arts		18				9				13				16				12		
50.0702 Fine Arts-BFA		17				23				37				48				43		
50.0901 Music		20				26				36				35				46		
50.0999 Recording Arts																		5		
50.0501 Theatre, Film, & Television-BA		3				4				14				8				7		
50.0501 Theatre, Film, & Television-BFA																		3		
BUSINESS	287	646	0	0	326	558	0	0	348	571	0	0	362	584	0	0	334	637	0	0
52.0301 Accounting			32			42				24				27				34		
52.0201 Business Administration	287	385			326	285			348	324			362	347			334	402		
11.0101 Computer Science & Info. Systems																				
52.0801 Finance			45			66				64				62				77		
51.0701 Health Administration			24			13				7				3				6		
11.0401 Information Systems			100			104				103				86				71		
52.1101 International Business			14			12				15				24				13		
52.1003 Management and Organization			32			15				13				18				11		
52.1401 Marketing			14			21				21				17				23		
LIBERAL ARTS & SCIENCES	582	160	0	7	723	139	0	6	697	145	0	8	762	158	0	7	808	166	0	10
45.0201 Anthropology		20	8			16	11			19	6			15	3			16	11	
27.0301 Applied Mathematics			7			7		2		8		2		11		4		11		3
26.0101 Biology		107	7			85	10			60	5			73	10			91	4	
40.0501 Chemistry		17	6			8	2			16	6			10	9			10	6	
9.0101 Communication		69	3			81	6			108	2			131	8			157	7	
9.0101 Communication & Theatre																				
45.0601 Economics		35	10			106	21			133	34			149	19			129	22	
23.0101 English		30	15			45	10			30	7			34	15			28	11	
23.0401 English Writing Program		28				30				34				30				25		
3.0401 Environmental Sciences			8			7				6				4				9		
16.0901 French		2				9				9				6				12		
45.0701 Geography		8				10				7				13				11		
40.0601 Geology		4				8				3				6				8		
16.0301 German		1				5				4				6				7		
30.1701 Health and Behavioral Sciences				2				4				6					3			7
54.0101 History		26	11			33	7			25	8			30	13			29	13	
24.0103 Humanities			21			13				15				11				15		
30.9999 Individually Structured Major		16				71				13				31				19		
30.0101 Master of Integrated Sciences			6			9								5				3		
27.0101 Mathematics		19				17				20				17				13		
38.0101 Philosophy		15				10				20				14				18		
40.0801 Physics		6				5				2				8				2		
45.1001 Political Science		48	21			39	6			48	15			46	11			54	16	
42.0101 Psychology		88	10			94	14			91	13			89	18			113	15	
42.1101 Psychology-BS		11				16				13				16				23		
45.0101 Social Science			12			9				4				8				7		
45.1101 Sociology		24	3			28	3			33	4			32	4			34	8	
16.0905 Spanish		8				7				9				6				9		
23.1101 Technical Communication			12			4				12				9				8		
EDUCATION	0	377	7	10	0	460	32	18	0	457	19	21	0	497	16	13	0	384	20	18
13.0401 Admin. Leadership and Policy Studies		28	3			27	6			21	3			40	4			22	3	
13.1101 Counseling Psych. and Counselor Educ.		79				75				68				85				45		
13.0301 Curriculum and Instruction		175				221				217				220				165		
13.1210 Early Childhood Education		18				13				17				26				24		
13.1401 Educational Leadership and Innovation				10				18				21				13				18
42.1801 Educational Psychology		15				22				26				26				39		
25.0101 Information and Learning Technologies		31				61				77				70				59		
42.1701 School Psychology			4			26				16				12				17		
13.1001 Special Education		31				41				31				30				30		
ENGINEERING	155	90	0	2	151	89	0	2	172	100	0	1	153	111	0	3	134	105	0	0
27.0301 Applied Mathematics		1				1				1										
14.0801 Civil Engineering		22	26	2		24	24	2		19	23	1		33	22	3		25	23	
11.0101 Computer Science			34			40				43				52				42		
11.0101 Computer Science and Engineering		42				53				57				69				61		
11.0101 Computer Science & Info. Systems																				
14.1001 Electrical Engineering		52	11			44	9			43	7			31	12			29	16	
14.0101 Engineering			8			8				21				19				13		
14.1901 Mechanical Engineering		38	11			29	8			52	6			20	6			19	11	
PUBLIC AFFAIRS	0	99	0	6	0	83	0	3	0	116	0	7	0	125	0	5	0	149	0	2
43.0103 Criminal Justice			31			18				25				39				40		
44.0401 Public Administration			68			65				91				86				109		
44.0401 Public Affairs ²				6				3												2
CU-DENVER TOTAL	1,082	1,517	7	25	1,262	1,469	32	29	1,317	1,517	19	39	1,384	1,617	16	32	1,387	1,556	20	33

Notes:

1. The degree program name for the Master of Basic Science was changed to Master of Integrated Sciences in 2002.
2. The degree program name for the doctorate in Public Administration was changed to Public Affairs in 1999.

Source: CCHE Degrees Awarded Reports

Section V.
Faculty Data

**FULL-TIME INSTRUCTIONAL FACULTY
2004-2005**

DISTRIBUTION BY GENDER

<u>School/College</u>	<u>Male</u>		<u>Female</u>		<u>Total</u>
	<u>N</u>	<u>%</u>	<u>N</u>	<u>%</u>	<u>N</u>
Architecture and Planning-Combined¹	25	69.44%	11	30.56%	36
Architecture and Planning-Denver	17	68.00%	8	32.00%	25
Architecture and Planning-Boulder	14	70.00%	6	30.00%	20
Arts and Media	29	65.91%	15	34.09%	44
Business	44	67.69%	21	32.31%	65
Liberal Arts and Sciences	124	64.58%	68	35.42%	192
Education	17	32.08%	36	67.92%	53
Engineering	31	83.78%	6	16.22%	37
Public Affairs	11	68.75%	5	31.25%	16
TOTAL CU-Denver	281	63.43%	162	36.57%	443

DISTRIBUTION BY HIGHEST DEGREE AWARDED

<u>School/College</u>	<u>Pre-Baccalaureate</u>		<u>Bachelor</u>		<u>Master</u>		<u>Doctorate</u>		<u>Total</u>
	<u>N</u>	<u>%</u>	<u>N</u>	<u>%</u>	<u>N</u>	<u>%</u>	<u>N</u>	<u>%</u>	<u>N</u>
Architecture and Planning-Combined¹	0	0.00%	3	8.33%	21	58.33%	12	33.33%	36
Architecture and Planning-Denver	0	0.00%	2	8.00%	16	64.00%	7	28.00%	25
Architecture and Planning-Boulder	0	0.00%	2	10.00%	8	40.00%	10	50.00%	20
Arts and Media	2	4.55%	2	4.55%	30	68.18%	10	22.73%	44
Business	0	0.00%	1	1.54%	9	13.85%	55	84.62%	65
Liberal Arts and Sciences	0	0.00%	0	0.00%	28	14.58%	164	85.42%	192
Education	0	0.00%	0	0.00%	5	9.43%	48	90.57%	53
Engineering	0	0.00%	0	0.00%	4	10.81%	33	89.19%	37
Public Affairs	0	0.00%	0	0.00%	0	0.00%	16	100.00%	16
TOTAL CU-Denver	2	0.45%	6	1.35%	97	21.90%	338	76.30%	443

Notes:

1. Some faculty split time between Denver & Boulder.
2. Excludes Deans and Associate Deans.
3. Data as of November 1, 2004.

Source:

Faculty Data File, Office of Institutional Research, Planning & Analysis

**FULL-TIME INSTRUCTIONAL FACULTY
2004-2005**

DISTRIBUTION BY TENURE STATUS

<u>School/College</u>	<u>Non-Tenure Track</u>		<u>Tenure Track</u>		<u>Tenured</u>		<u>Total</u>	<u>% Tenured</u>
	<u>Male</u>	<u>Female</u>	<u>Male</u>	<u>Female</u>	<u>Male</u>	<u>Female</u>		
Architecture and Planning-Combined¹	7	2	3	4	15	5	36	55.56%
Architecture and Planning-Denver	4	1	2	4	11	3	25	56.00%
Architecture and Planning-Boulder	3	1	3	1	8	4	20	60.00%
Arts and Media	13	9	9	5	7	1	44	18.18%
Business	13	8	5	4	26	9	65	53.85%
Liberal Arts and Sciences	33	25	30	12	61	31	192	47.92%
Education	2	17	4	7	11	12	53	43.40%
Engineering	5	0	4	1	22	5	37	72.97%
Public Affairs	0	0	2	3	9	2	16	68.75%
TOTAL CU-Denver	73	61	57	36	151	65	443	48.76%

DISTRIBUTION BY RANK

<u>School/College</u>	<u>Professor</u>		<u>Assoc. Professor</u>		<u>Asst. Professor</u>		<u>Senior Instructor/ Instructor</u>		<u>Total</u>
	<u>Male</u>	<u>Female</u>	<u>Male</u>	<u>Female</u>	<u>Male</u>	<u>Female</u>	<u>Male</u>	<u>Female</u>	
Architecture and Planning-Combined¹	9	2	5	3	4	4	7	2	36
Architecture and Planning-Denver	6	2	4	1	3	4	4	1	25
Architecture and Planning-Boulder	5	2	3	2	3	1	3	1	20
Arts and Media	3	0	4	1	9	5	13	9	44
Business	16	4	11	5	4	4	13	8	65
Liberal Arts and Sciences	30	9	32	23	29	11	33	25	192
Education	6	2	5	11	4	6	2	17	53
Engineering	13	2	9	3	4	1	5	0	37
Public Affairs	8	0	1	2	2	3	0	0	16
TOTAL CU-Denver	85	19	67	48	56	34	73	61	443

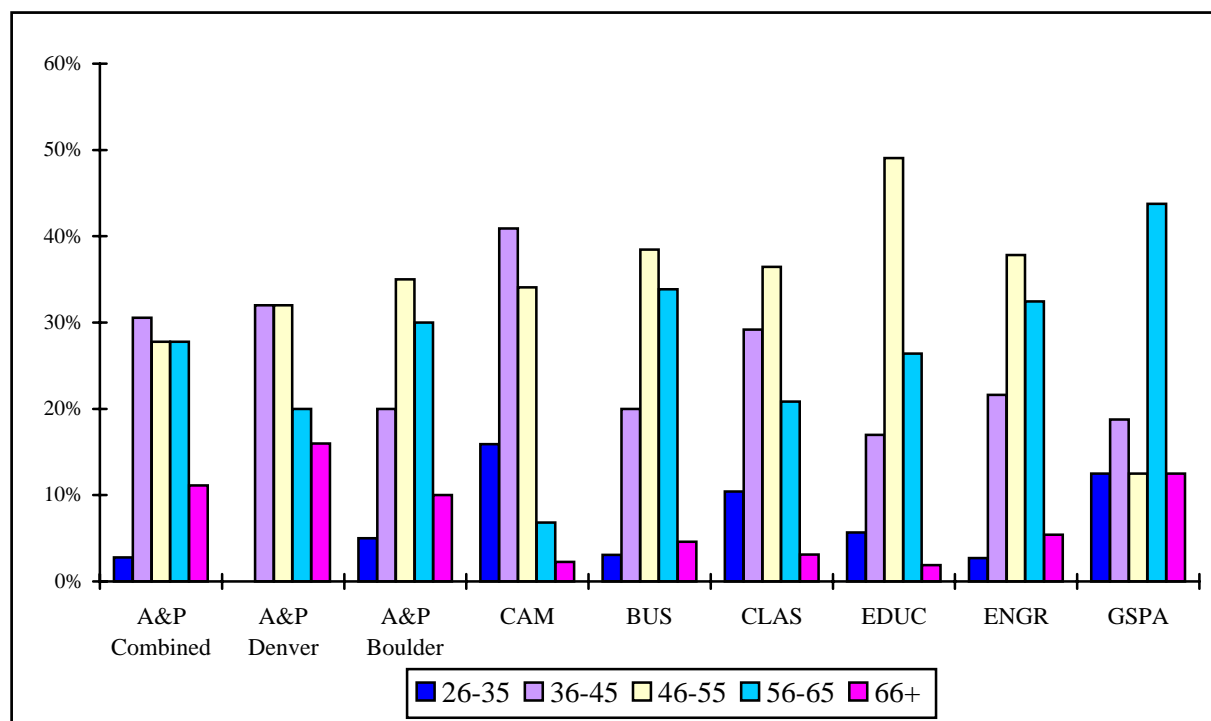
Notes:

1. Some faculty split time between Denver & Boulder.
2. Excludes Deans and Associate Deans.
3. Data as of November 1, 2004.

Source:

Faculty Data File, Office of Institutional Research, Planning & Analysis

FULL-TIME INSTRUCTIONAL FACULTY DISTRIBUTION BY AGE



<u>School/College</u>	<u>%</u> <u>26-35</u>	<u>%</u> <u>36-45</u>	<u>%</u> <u>46-55</u>	<u>%</u> <u>56-65</u>	<u>%</u> <u>66+</u>
Architecture and Planning-Combined¹	3%	31%	28%	28%	11%
Architecture and Planning-Denver	0%	32%	32%	20%	16%
Architecture and Planning-Boulder	5%	20%	35%	30%	10%
Arts and Media	16%	41%	34%	7%	2%
Business	3%	20%	38%	34%	5%
Liberal Arts and Sciences	10%	29%	36%	21%	3%
Education	6%	17%	49%	26%	2%
Engineering	3%	22%	38%	32%	5%
Public Affairs	13%	19%	13%	44%	13%
TOTAL CU-Denver	8%	26%	37%	25%	4%

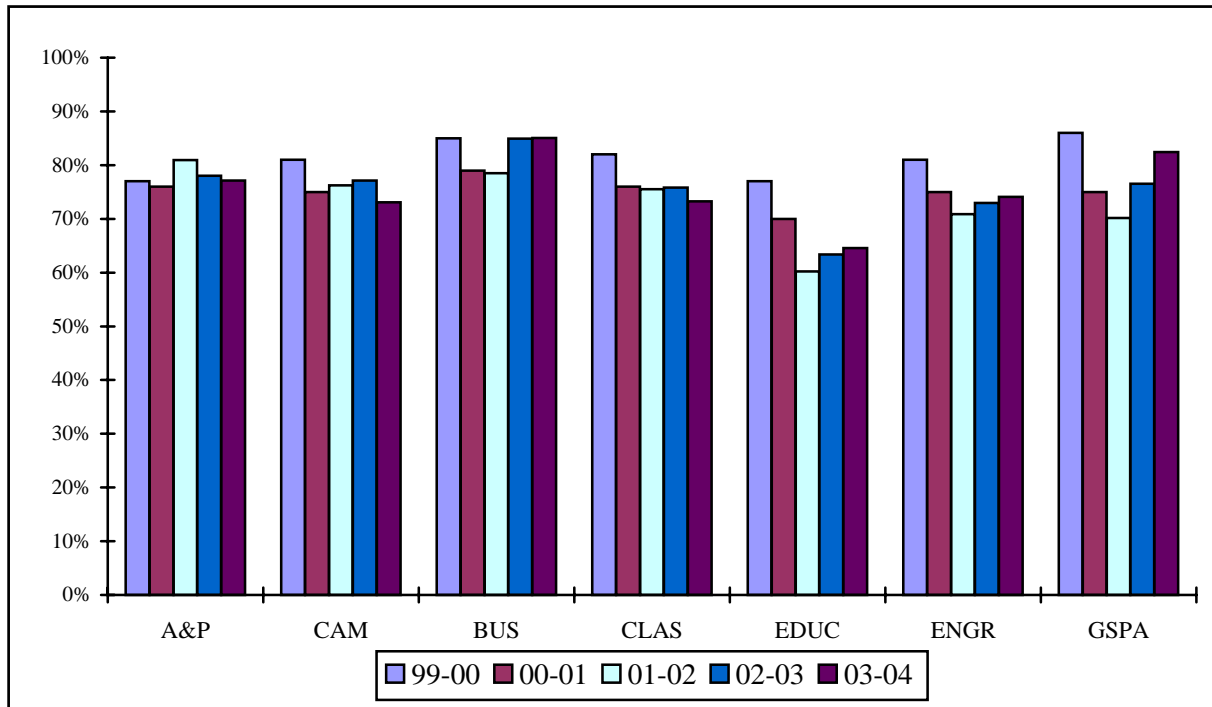
Notes:

1. Some faculty split time between Denver & Boulder.
2. Excludes Deans and Associate Deans.
3. Data as of November 1, 2004.

Source:

Faculty Data File, Office of Institutional Research, Planning & Analysis

**PERCENT FULL-TIME INSTRUCTIONAL FACULTY
1999-00 THROUGH 2003-04**



<u>School/College</u>	<u>FY 99-00</u>	<u>FY 00-01</u>	<u>FY 01-02</u>	<u>FY 02-03</u>	<u>FY 03-04</u>
Architecture and Planning-Denver¹	77%	76%	81%	78%	77%
Arts and Media	81%	75%	76%	77%	73%
Business	85%	79%	78%	85%	85%
Liberal Arts and Sciences	82%	76%	75%	76%	73%
Education	77%	70%	60%	63%	65%
Engineering	81%	75%	71%	73%	74%
Public Affairs	86%	75%	70%	77%	82%
TOTAL CU-Denver	82%	75%	73%	75%	74%

Notes:

1. Architecture & Planning does not include faculty for the undergraduate Environmental Design program taught in Boulder.

Source:

Prior to 00-01, Budget Office FTE Faculty Reports
After 00-01, Institutional Research FY Clear All report

**FTE INSTRUCTIONAL FACULTY
1999-00 THROUGH 2003-04**

	<u>1999-00</u>	<u>2000-01</u>	<u>2001-02</u>	<u>2002-03</u>	<u>2003-04</u>
ARCHITECTURE AND PLANNING¹	27.73	37.65	36.09	38.25	35.98
ARTS AND MEDIA	37.01	44.78	46.85	57.30	54.04
BUSINESS	77.85	75.02	73.63	78.89	75.63
LIBERAL ARTS AND SCIENCES	213.67	235.98	251.25	254.56	246.25
Anthropology	6.20	8.47	11.02	9.41	9.18
Biology	12.54	17.81	19.20	18.28	17.34
Chemistry	13.31	13.35	12.38	13.30	13.96
Communication	13.86	16.33	18.60	20.34	18.05
Economics	13.13	12.00	13.28	12.88	13.40
English	27.11	29.77	31.07	33.13	32.27
Environmental Sciences	0.33	2.59	3.26	2.46	3.65
Ethnic Studies	0.78	1.12	1.59	2.52	2.11
French	5.10	4.00	4.17	4.24	3.10
Geography	5.10	5.01	5.27	5.16	5.77
Geology	4.93	4.43	3.79	3.86	3.57
German	2.23	2.30	2.33	2.39	2.00
Health and Behavioral Sciences	2.63	3.35	3.34	3.66	3.87
History	8.72	12.14	13.22	13.44	13.13
Humanities	0.00	2.97	1.66	1.85	2.43
Interdisciplinary	2.14	3.11	2.55	1.88	2.65
Mathematics	29.38	29.50	31.28	31.45	31.94
Modern Languages	3.97	2.79	2.40	2.60	0.97
Philosophy	8.03	10.49	11.44	11.58	10.91
Physics	8.80	8.40	8.24	9.54	8.70
Political Science	9.84	12.72	12.56	13.20	12.58
Psychology	15.30	15.91	17.31	16.50	15.92
Sociology	5.96	8.21	9.08	8.86	9.25
Spanish	14.28	9.21	12.21	12.03	9.50
EDUCATION	66.44	71.88	81.85	82.93	82.44
ENGINEERING	52.67	55.53	58.33	53.69	54.75
Civil Engineering	16.40	17.03	17.27	15.22	15.65
Computer Science	12.73	16.15	17.66	17.97	18.84
Electrical Engineering	12.02	11.16	11.53	10.37	10.40
Mechanical Engineering	11.52	11.19	11.87	10.13	9.86
PUBLIC AFFAIRS	21.45	17.39	19.57	19.48	20.20
CU-DENVER TOTALS	496.82	538.23	567.57	585.10	569.29

Notes:

1. Architecture & Planning does not include students from the undergraduate Environmental Design programs taught in Boulder.

Source:

Prior to 00-01, Budget Office FTE Faculty Reports
After 00-01, Institutional Research FY Clear All report

**STUDENT/FACULTY RATIOS
BY SCHOOL/COLLEGE AND DEPARTMENT
1999-00 THROUGH 2003-04**

	<u>1999-00</u>	<u>2000-01</u>	<u>2001-02</u>	<u>2002-03</u>	<u>2003-04</u>
ARCHITECTURE AND PLANNING¹	12.78	9.09	9.35	9.44	10.94
ARTS AND MEDIA	12.25	11.74	12.45	11.88	13.75
BUSINESS	18.37	19.49	20.75	20.39	20.75
LIBERAL ARTS AND SCIENCES	16.32	15.63	15.44	16.08	17.04
Anthropology	24.08	17.89	14.09	17.23	18.40
Biology	23.01	15.89	14.55	18.08	21.60
Chemistry	16.23	16.38	16.56	17.70	18.07
Communication	16.98	16.01	16.61	16.66	18.55
Economics	14.88	18.90	18.55	19.33	19.34
English	15.73	14.57	14.44	14.49	15.59
French	7.98	9.53	11.29	10.59	9.48
Geography	10.27	11.06	11.37	12.91	13.85
Geology	7.38	7.74	10.00	10.44	11.90
German	12.83	12.39	12.40	11.80	12.00
History	18.12	14.82	14.11	14.32	15.83
Mathematics	13.74	14.21	14.26	14.68	13.94
Philosophy	22.84	19.40	18.83	18.33	19.00
Physics	18.58	21.20	22.90	18.06	21.03
Political Science	14.58	13.00	15.29	15.39	17.31
Psychology	20.58	20.89	19.49	20.63	23.05
Sociology	30.34	22.25	21.45	24.72	26.48
Spanish	9.76	16.54	13.55	14.75	12.67
EDUCATION	10.90	10.07	9.78	10.88	11.63
ENGINEERING	12.20	11.69	9.87	10.66	9.74
PUBLIC AFFAIRS	7.10	9.81	9.18	9.34	8.63
CU-DENVER TOTALS	14.60	14.07	13.91	14.37	15.07

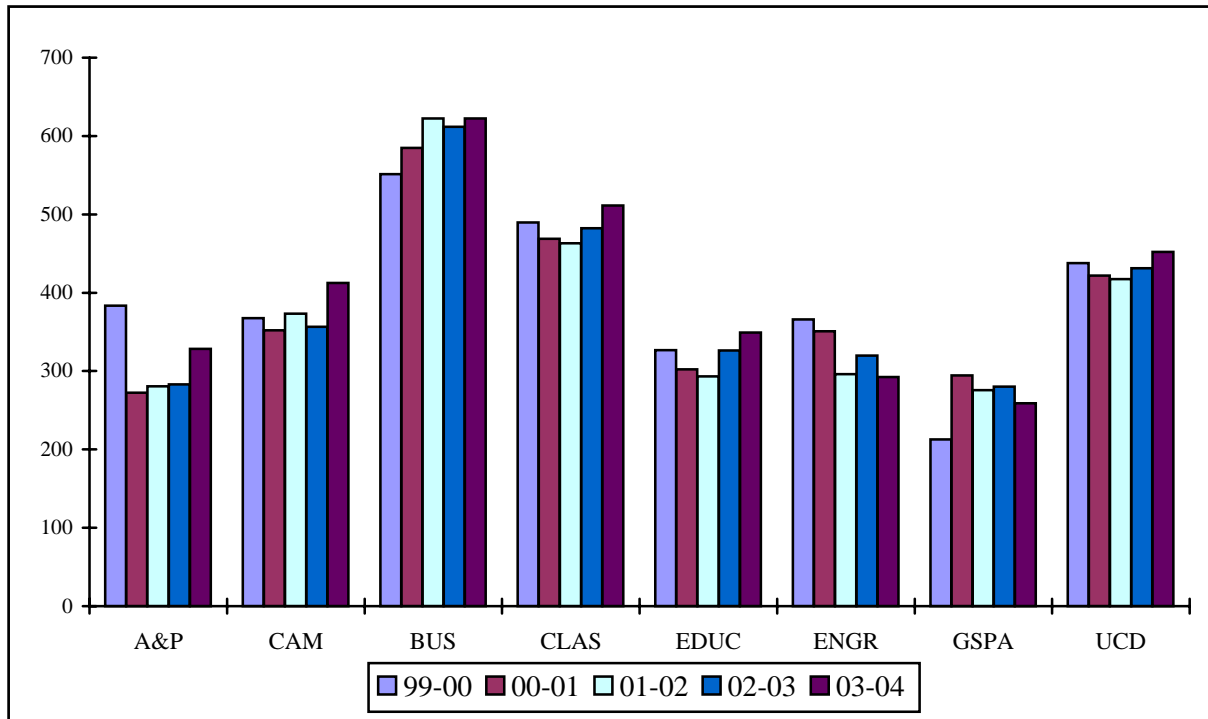
Notes:

1. Architecture & Planning does not include students from the undergraduate programs taught in Boulder.

Source:

FTEs from Student Section of this report divided by FTEF from previous page.
Office of Institutional Research, Planning and Analysis

**STUDENT CREDIT HOURS PER FTE FACULTY BY SCHOOL
1999-00 THROUGH 2003-04**



	<u>FY</u> <u>99-00</u>	<u>FY</u> <u>00-01</u>	<u>FY</u> <u>01-02</u>	<u>FY</u> <u>02-03</u>	<u>FY</u> <u>03-04</u>
Architecture and Planning-Denver¹	383.3	272.6	280.4	283.1	328.3
Arts and Media	367.6	352.2	373.4	356.5	412.5
Business	551.2	584.6	622.5	611.7	622.5
Liberal Arts and Sciences	489.5	468.9	463.3	482.3	511.3
Education	326.9	302.0	293.4	326.4	349.0
Engineering	366.0	350.7	296.2	319.7	292.3
Public Affairs	212.9	294.3	275.5	280.1	258.9
TOTAL CU-Denver	437.9	422.0	417.2	431.1	452.1

Notes:

1. Architecture & Planning does not include faculty for the undergraduate program in Boulder.

Source:

Prior to 00-01, Budget Office FTE Faculty Reports
After 00-01, Institutional Research FY Clear All report

Section VI.
Financial Data

**FINANCIAL AID AWARDS
2002-03 and 2003-04**

	No. of Recipients 2002-03	Awards in \$ 2002-03	No. of Recipients 2003-04	Awards in \$ 2003-04
<u>FEDERAL GRANTS</u>				
CSIG/CLEAP/SLEAP	93	132,862	61	109,426
Pell	1,469	3,553,206	1,702	4,317,845
SEOG	213	324,852	122	311,580
BIA/Indian Fellowship	9	37,400	14	45,300
Sub-Total Federal Grant	1,784	4,048,320	1,899	4,784,151
<u>STATE GRANTS</u>				
Colorado Student Grant	664	1,068,428	408	1,026,764
Undergraduate Merit	450	703,026	359	325,964
Grad Need	352	1,001,782	243	855,162
Colorado Fellowship	67	174,652	33	80,259
Governor's Opportunity Scholarship	81	546,218	90	559,422
Sub-Total State Grant	1,614	3,494,106	1,133	2,847,571
<u>INSTITUTIONAL AWARDS</u>				
Advantage Scholarship	93	258,930	95	276,991
Ahlin	13	76,615	8	32,687
Arnold	9	12,000	16	22,000
Chancellor's Scholarship	21	31,500	29	27,750
Chancellor's Scholars & Leaders	53	116,400	57	131,500
CU - Denver Need-Based Aid			171	123,049
CU in the City Incentive Awards	29	27,750		
Displaced Aurarians	7	23,369	18	71,124
Coalition (formerly Elway)	6	2,250	5	3,750
Employee - Spouse/Child Scholarship	38	22,437	40	26,529
Nelson/Running Wolf	18	20,000	21	20,000
Virginia T. Schuman Scholarship	35	103,519	77	206,590
Urban Scholarship	46	47,750	28	26,500
Sub-Total Institutional Awards	368	742,520	565	968,470
<u>LOANS</u>				
PLUS/SLS	83	557,910	113	761,225
Stafford (formerly GSL)	5,074	31,466,074	5,155	37,662,607
Perkins (formerly NDSL)	152	391,850	200	517,350
Sub-Total Loan	5,309	32,415,834	5,468	38,941,182
<u>WORK PROGRAMS</u>				
Federal Work-Study	225	780,942	292	842,084
Colorado Work-Study	191	458,265	200	608,191
Colorado No Need Work-Study	34	129,866	37	144,613
Sub-Total Work	450	1,369,073	529	1,594,888
Grand Total	9,525	\$42,069,853	9,594	\$49,136,262

Source: Office of Financial Aid

**REVENUE AND EXPENDITURES
STATE APPROPRIATIONS
FISCAL YEAR 2003-04**

REVENUE

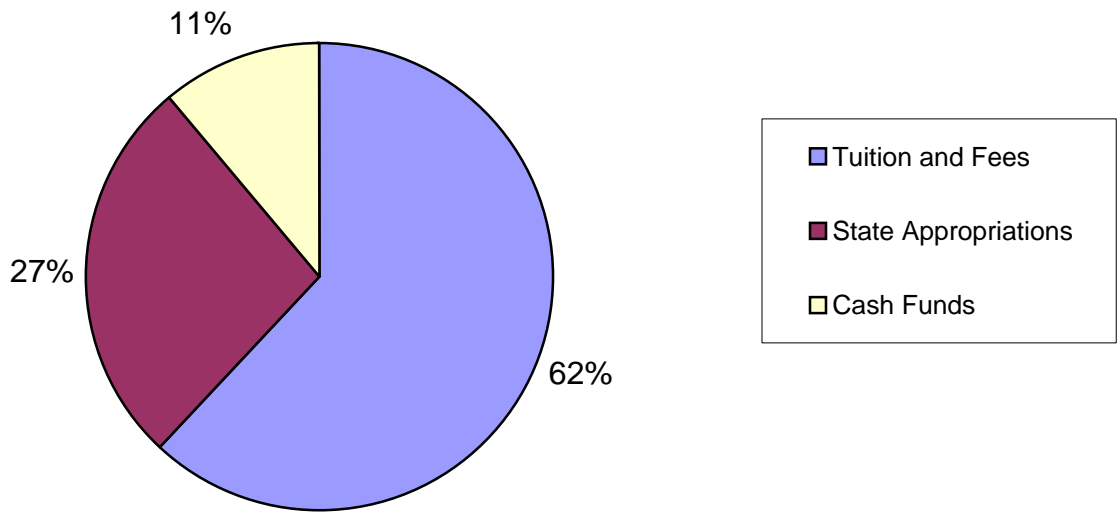
Tuition and Fees	\$55,947,931
State Appropriations	\$24,202,084
Cash Funds	\$10,127,733
Total Revenue	\$90,277,748

EXPENDITURES

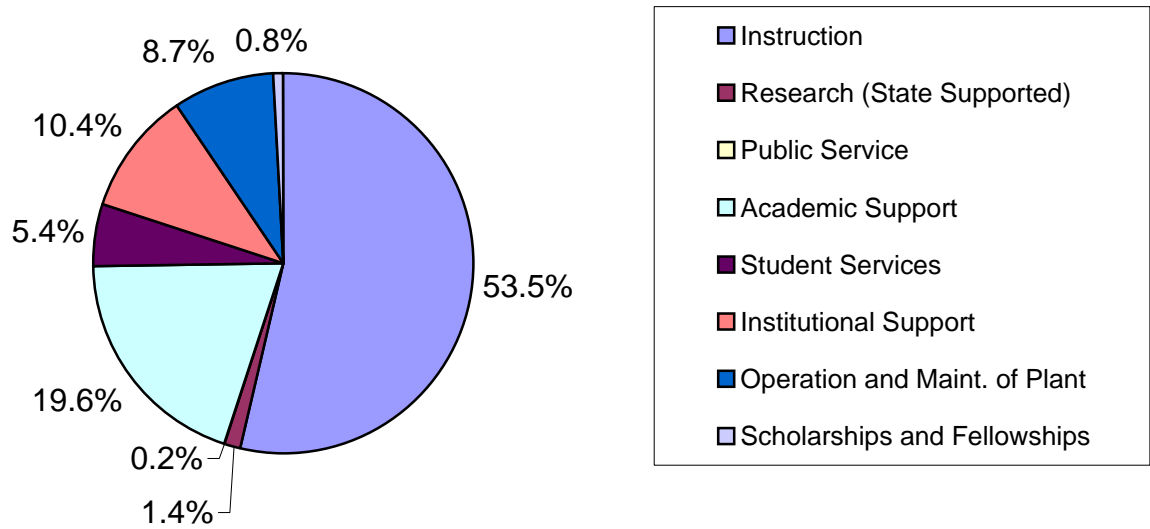
Instruction	\$44,134,268
Research (State Supported)	\$1,170,815
Public Service	\$161,950
Academic Support	\$16,145,569
Student Services	\$4,481,164
Institutional Support	\$8,607,870
Operation and Maint. of Plant	\$7,134,327
Scholarships and Fellowships	\$641,192
Other	\$0
Total Expenditures	\$82,477,155

Source: Financial Statement, University of Colorado at Denver

REVENUE FY 2003-04

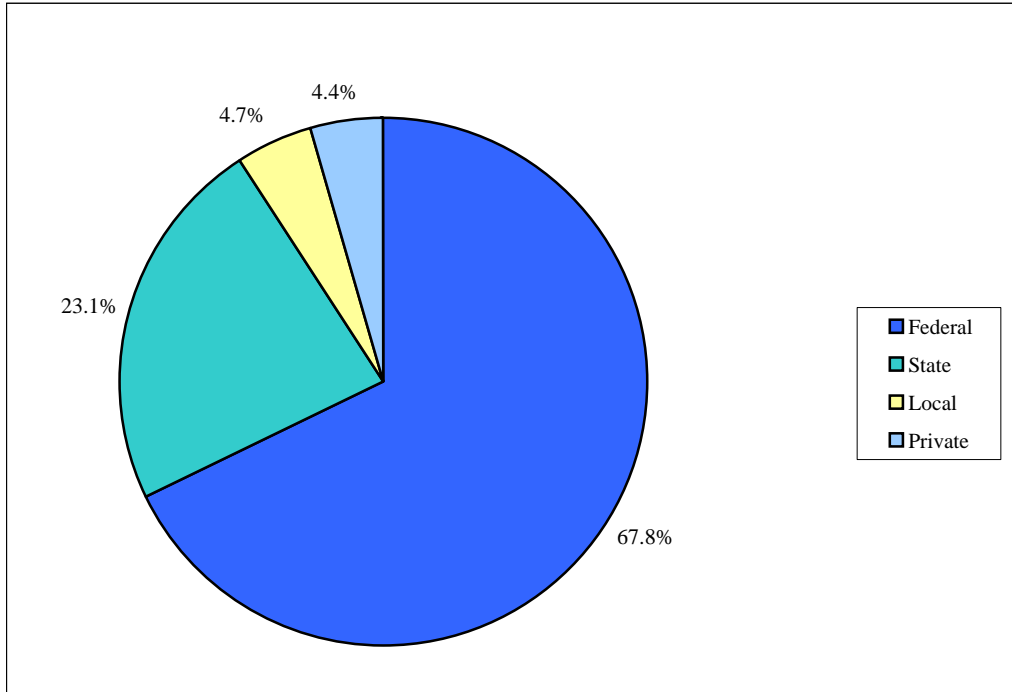


EXPENDITURES FY 2003-04



Source: Statement of Revenues, Expenses, and Changes in Net Assets, Fiscal Year 2003-2004,
University of Colorado at Denver

**CONTRACTS AND GRANTS BY FUNDING SOURCE
FISCAL YEAR 2003-04**



Federal	67.8%	\$15,397,449
State	23.1%	\$5,244,294
Local	4.7%	\$1,059,180
Private	4.4%	\$997,552
TOTAL	100.0%	\$22,698,475

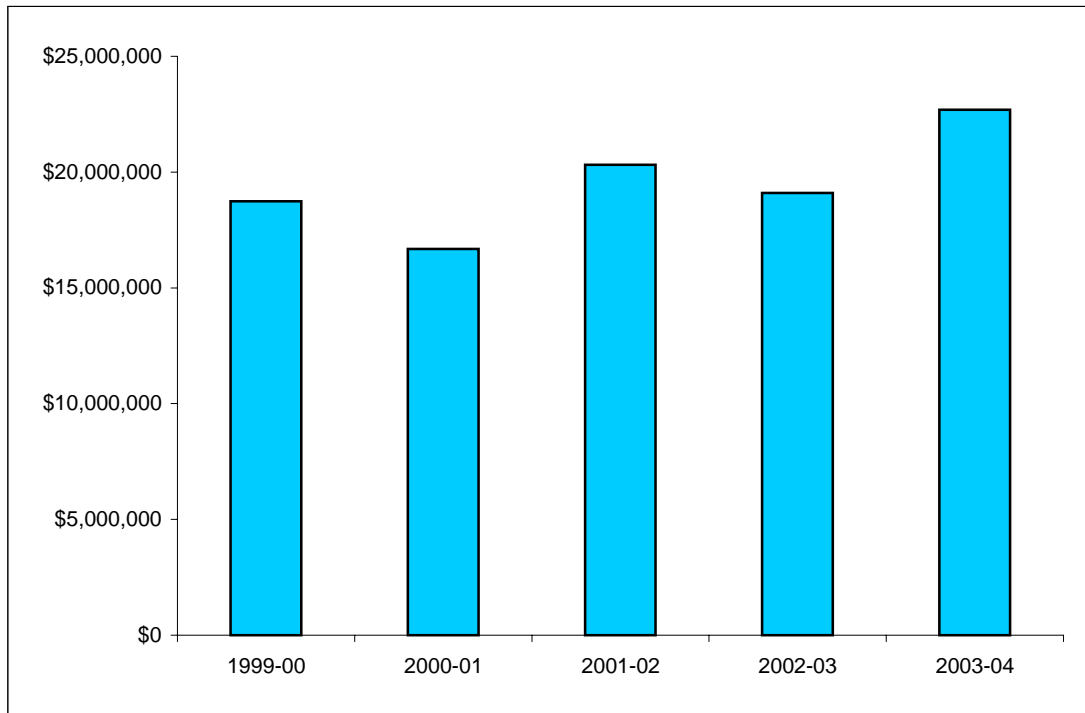
Notes:

1. Federal figure includes multiple funding sources.

Source:

Office of Sponsored Programs June 2004 Monthly Report (Year End)

**TOTAL CONTRACTS AND GRANTS AWARDED
FISCAL YEARS 1999-00 THROUGH 2003-04**



<u>Fiscal Year</u>	<u>Total Awards</u>	<u>Percent Change from Previous Year</u>
1999-00	\$18,736,205	1.2%
2000-01	\$16,676,174	-11.0%
2001-02	\$20,315,431	21.8%
2002-03	\$19,105,037	-6.0%
2003-04	\$22,698,475	18.8%

Source:
Office of Sponsored Programs June 2004 Monthly Report (Year End)

**CONTRACT AND GRANT PROPOSALS SUBMITTED,
AWARDS RECEIVED, INDIRECT COSTS COLLECTED
JUNE 1, 2003 TO JUNE 30, 2004**

School/College or Department	Number of Proposals Submitted	Number of Awards Funded	Amount of Awards	Indirect Costs Collected
Arts & Media	1	0	\$0	\$0
Architecture & Planning	8	10	\$401,431	\$39,590
Business	3	4	\$3,464,148	\$3,988
Education	31	56	\$9,496,460	\$997,060
Engineering	28	21	\$1,295,613	\$180,465
Liberal Arts & Sciences	76	51	\$2,602,766	\$495,688
Public Affairs	18	18	\$1,203,801	\$268,825
Library	0	0	\$0	\$0
Office of Academic and Student Affairs *	24	52	\$4,234,256	\$594,824
Office of Administration and Finance	0	0	\$0	\$0
TOTAL	189	212	\$22,698,475	\$2,580,440

Source:

Office of Sponsored Programs June, 2004 Monthly Report (Year End)

* Figure for Academic and Student Affairs now includes the former Interntaional Training, Education and Research Academy, now two separate components (National Learning Center and the Latino/a Research and Policy Center), both reporting to ASA