

**INSTITUTIONAL  
FACTS  
AND  
CHARACTERISTICS**

---

**Office of Institutional Research, Planning and Analysis  
University of Colorado at Denver  
Fall 2002**

---

## TABLE OF CONTENTS

### GENERAL INFORMATION

Role and Mission Statement	2
Definitions of Terms and Abbreviations	3
History and Summary of Facts	4

### STUDENT DATA

Headcount Enrollments by School and College - Fall Semesters	9
Headcount Enrollments by Gender, Undergraduate/Graduate and Full-time/Part-time - Fall Semesters	10
Enrollments by Class and Gender - Fall Semesters	11
Distribution of Headcount Students by Class, Major and Ethnic Category - Fall 2002	12
Comparison of Headcount to Term FTE Students - Fall 1998 Through Fall 2002	13
Enrollments by Major - Fall 2002	14
Ethnic Distribution of Headcount Students - Fall Semesters	16
Age Distribution - Fall 2002	17
Student Headcount by County - Fall 2002	18
Student Headcount by Metro Denver County - Fall 2002	19
Average Student Credit Hour Load by Level for Fall Semesters	20
Undergraduate Applicants by Academic Unit - Fall 2001 and Fall 2002	21
FY FTE Students by School/College and Subject Area - 1997-98 Through 2001-02	22
FY FTE Students by Level of Instruction	23
FY FTE Students by School/College and Level of Instruction	24
FTE Students by School/College, Department and Level of Instruction - Fiscal Year 2001-02	25

### ALUMNI DATA

Alumni by Year of Graduation	28
Alumni by Geographic Location	29
Alumni by Degrees - Cumulative 1975-76 Through 2001-02	30

### DEGREE DATA

Degrees Offered by School/College and Program (CCHE Approved Degree Programs) - 2002-03 Academic Year	34
Degrees Conferred - 1975-76 Through 2001-02	35
Degrees Conferred by Gender - 2001-02	36
Degrees Conferred by Ethnicity - 2001-02	37
Degrees Conferred by School/College - 1997-98 Through 2001-02	38

TABLE OF CONTENTS  
(Continued)

FACULTY DATA

Full-time Instructional Faculty	
Distribution by Gender and Highest Degree Awarded	41
Full-time Instructional Faculty	
Distribution by Tenure Status, Rank, and Ethnicity	42
Full-time Instructional Faculty - Distribution by Age	43
Percent Full-time Faculty - 1997-98 Through 2001-02	44
FTE Instructional Faculty - 1997-98 Through 2001-02	45
Student/Faculty Ratios by School/College and Department	
- 1997-98 Through 2001-02	46
Student Credit Hours/FTE Faculty by School/College	
- FY 1997-98 Through FY 2001-02	47

FINANCIAL DATA

Financial Aid Awards - 2000-01 and 2001-02	50
Revenue and Expenditures State Appropriations - Fiscal Year 2001-02	51
Revenue FY 2001-02 and Expenditures FY 2001-02	52
Contracts and Grants by Funding Source - Fiscal Year 2001-02	53
Total Contracts and Grants Awarded - Fiscal Years 1997-98 Through 2001-02	54
Contract and Grant Proposals Submitted, Awards Received, Indirect Costs Collected - July 1, 2001 to June 30, 2002	55



# General Information

# UNIVERSITY OF COLORADO AT DENVER

## STATEMENT OF PURPOSES

- Provide students with learning opportunities that will enhance the quality of their lives, that will make them well-educated citizens, that will lead to rewarding careers, and that will provide Denver and Colorado with a workforce able to compete in the global economy;
- Develop research, scholarship and creative work that will advance the base of knowledge in our disciplines and that will contribute to the vitality of our culture and/or economy;
- Apply the university's skills and knowledge to real problems in the Denver metro area;
- Build and maintain an institutional culture of plurality, collegiality, integration and customer service.

Source:

NCA self-study

## **MISSION, ROLE, AND SCOPE STATEMENT**

PENDING NEW MISSION AND ROLE TO BE APPROVED BY STATE  
LEGISLATURE

## DEFINITION OF TERMS AND ABBREVIATIONS

Some of the tables and graphs included in this document use abbreviations or terms which may be unfamiliar. Following is a list of the most commonly used terms and related definitions.

**FTE Student (FTES)** - full-time equivalent student, calculated by dividing student credit hours by 30.

**Fiscal Year FTES** - includes summer, fall, and spring student credit hours divided by 30.

**Term FTES** - full-time equivalent student for a single semester, calculated by dividing student credit hours by 15.

**Headcount Students** - the number of individual students enrolled for a semester.

**SCH** - Student credit hours, derived by multiplying the number of students enrolled in a course by the course credit (e.g., 3.0 credit hours x 30 students = 90 SCH).

**FTEF** - Full-time equivalent faculty.

**SFR** - Student faculty ratio (FTES divided by FTEF).

**NRA** - Non-resident alien.

# UNIVERSITY OF COLORADO AT DENVER

## HISTORY AND SUMMARY OF FACTS

### History

- 1912 University of Colorado organizes Department of Correspondence and Extension in Denver; courses first offered.
- 1923 Regents of University of Colorado adopt policy to accept up to 90 hours of credit work earned in the Extension Division.
- 1953 Appointment of a Dean of the Extension Division.
- 1956 Regents purchase Tramway Building to house Extension Division.
- 1964 Regents change name of Denver Extension Center to the University of Colorado - Denver Center and place the administration of programs under the Vice President for Academic Affairs and Dean of Faculties.
- 1972 Constitutional amendment allowing the University of Colorado to maintain and develop branches and to rename the Denver Center the University of Colorado at Denver.
- 1974 House Bill 1163 Statutory Recognition for Auraria.  
Reorganization of the University of Colorado into a four-campus system.

### Schools and Colleges

- College of Architecture and Planning
- College of Arts and Media
- College of Business and Administration and Graduate School of Business Administration
- College of Engineering and Applied Science
- College of Liberal Arts and Sciences
- School of Education
- Graduate School of Public Affairs

Fine Arts, Music, and Theatre are no longer a part of the College of Liberal Arts and Sciences. They were transferred to the College of Arts and Media in FY 1997-98.

The School of Architecture and Planning changed its name to the College of Architecture and Planning in academic year 1993-94 to reflect the merger of the Graduate School of Architecture and Planning in Denver with the undergraduate College of Environmental Design in Boulder.

### Degree Programs Offered

Undergraduate	28
Graduate	
Master's	43
Doctorate	7
Ed. S.	2
TOTAL	80



## HISTORY AND SUMMARY OF FACTS

(Continued)

### Student

<b>Fall 2002 Headcount Enrollment</b>	<b>11,827</b>	
Undergraduate	6,697	57%
Graduate	5,130	43%
Full-time	6,128	52%
Part-time	5,699	48%
Male	5,395	46%
Female	6,432	54%
Minorities	2,462	21%
Average Age	28	

### Fall 2002 Instructional Faculty

Full-time Instructional Faculty	457
Average Age	48
Tenured	49%
Percent with Terminal Degree	87%
Male	63%
Female	37%
Minorities	13%

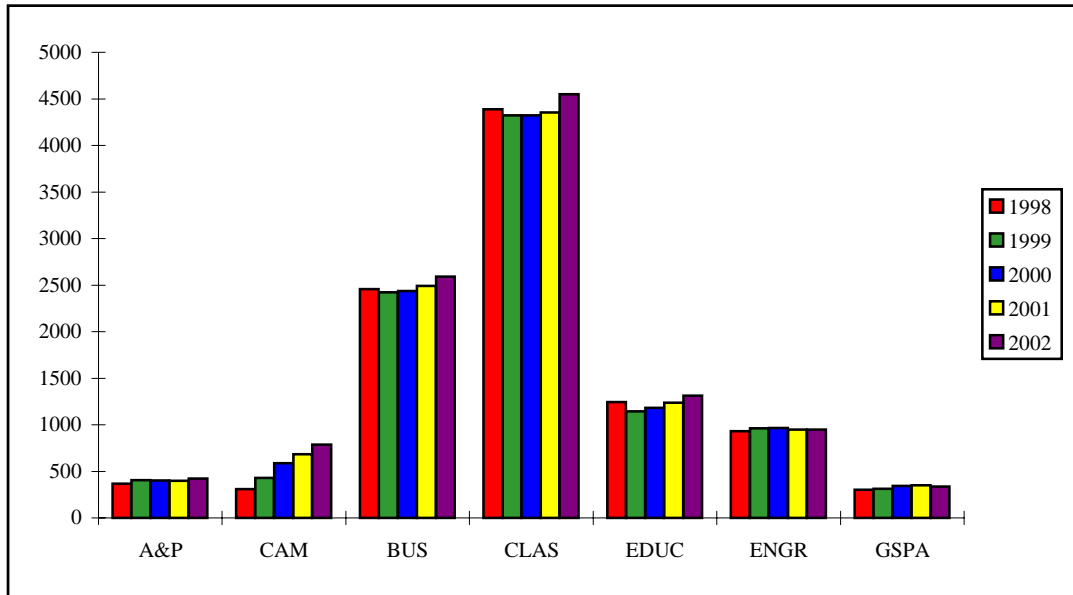
Notes: Master's Degrees in Fine Arts, Theatre, Music, and Arch. & Planning are considered terminal degrees. These degree counts are added to the Doctorate counts to calculate % with terminal degrees.



Student Data



**HEADCOUNT ENROLLMENTS  
BY SCHOOL AND COLLEGE  
FALL SEMESTERS**



	<u>1998</u>	<u>1999</u>	<u>2000</u>	<u>2001</u>	<u>2002</u>
Architecture and Planning <sup>1</sup>	367	404	401	400	421
Arts and Media <sup>2</sup>	308	431	586	683	786
Business	2,457	2,422	2,437	2,490	2,590
Liberal Arts and Sciences	4,389	4,324	4,324	4,353	4,550
Education	1,243	1,143	1,183	1,236	1,311
Engineering	932	962	965	948	948
Public Affairs	302	311	344	352	337
Other Units	9	3	14	4	4
Non-Degree	924	821	796	815	880
<b>TOTAL CU-DENVER</b>	<b>10,931</b>	<b>10,821</b>	<b>11,050</b>	<b>11,281</b>	<b>11,827</b>

Notes:

1. Architecture and Planning does not include students for the undergraduate Design and Planning program taught in Boulder.
2. Arts, Fine Arts, Music and Theatre were transferred into Arts and Media FY 1997-98.
3. Data are end-of-term figures.

Source:

Enrollment Reports  
Office of Institutional Research, Planning and Analysis

**HEADCOUNT ENROLLMENTS  
BY GENDER, UNDERGRADUATE/GRADUATE AND FULL-TIME/PART-TIME  
FALL SEMESTERS**

FALL SEMESTER	TOTAL STUDENT ENROLLMENT	GENDER		LEVEL		TIME	
		FEMALE	MALE	UNDER-GRAD	GRAD	FULL-TIME	PART-TIME
1998	10,931	5,904	5,027	5,952	4,979	5,101	5,830
1999	10,821	5,822	4,999	6,124	4,697	5,149	5,672
2000	11,050	6,020	5,030	6,409	4,641	5,464	5,586
2001	11,281	6,188	5,093	6,474	4,807	5,693	5,588
2002	11,827	6,432	5,395	6,697	5,130	6,128	5,699

Notes:

Data are end-of-term figures.

Source:

Enrollment Reports  
Office of Institutional Research, Planning and Analysis

**ENROLLMENTS BY CLASS AND GENDER  
FALL SEMESTERS**

	<b>1998</b>	<b>1999</b>	<b>2000</b>	<b>2001</b>	<b>2002</b>
<b>FRESHMEN</b>	1,062	1,143	1,301	1,263	1,360
Male	458	535	588	542	591
Female	604	608	713	721	769
<b>SOPHOMORES</b>	1,156	1,213	1,273	1,370	1,360
Male	505	514	558	600	643
Female	651	699	715	770	717
<b>JUNIORS</b>	1,353	1,428	1,474	1,533	1,636
Male	602	620	660	674	758
Female	751	808	814	859	878
<b>SENIORS &amp; 5TH YEAR</b>	2,197	2,153	2,193	2,157	2,200
Male	1,081	1,046	1,051	1,027	1,044
Female	1,116	1,107	1,142	1,130	1,156
<b>NON-DEGREE</b>	184	187	168	151	141
Male	100	105	93	79	70
Female	84	82	75	72	71
<b>UNDERGRADUATE TOTALS</b>	5,952	6,124	6,409	6,474	6,697
<b>Male</b>	2,746	2,820	2,950	2,922	3,106
<b>Female</b>	3,206	3,304	3,459	3,552	3,591
<b>GRADUATE TOTALS</b>	4,979	4,697	4,641	4,807	5,130
<b>Male</b>	2,281	2,179	2,080	2,171	2,289
<b>Female</b>	2,698	2,518	2,561	2,636	2,841
<b>STUDENT TOTALS</b>	<b>10,931</b>	<b>10,821</b>	<b>11,050</b>	<b>11,281</b>	<b>11,827</b>
<b>Male</b>	<b>5,027</b>	<b>4,999</b>	<b>5,030</b>	<b>5,093</b>	<b>5,395</b>
<b>Female</b>	<b>5,904</b>	<b>5,822</b>	<b>6,020</b>	<b>6,188</b>	<b>6,432</b>

Notes:

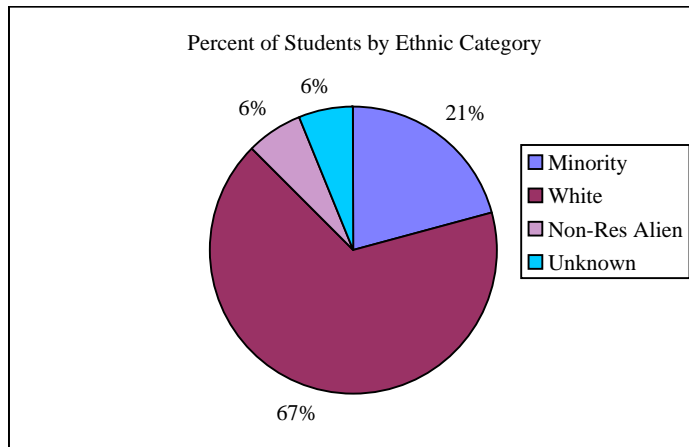
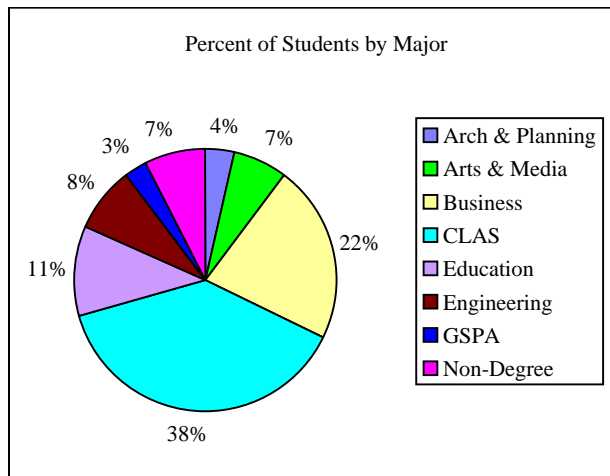
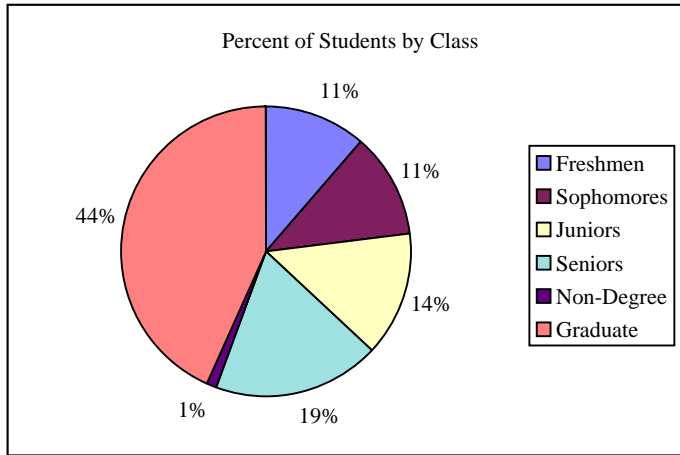
Data are end-of-term figures.

Source:

Enrollment Reports

Office of Institutional Research, Planning and Analysis

**DISTRIBUTION OF HEADCOUNT STUDENTS  
FALL 2002**



Notes:

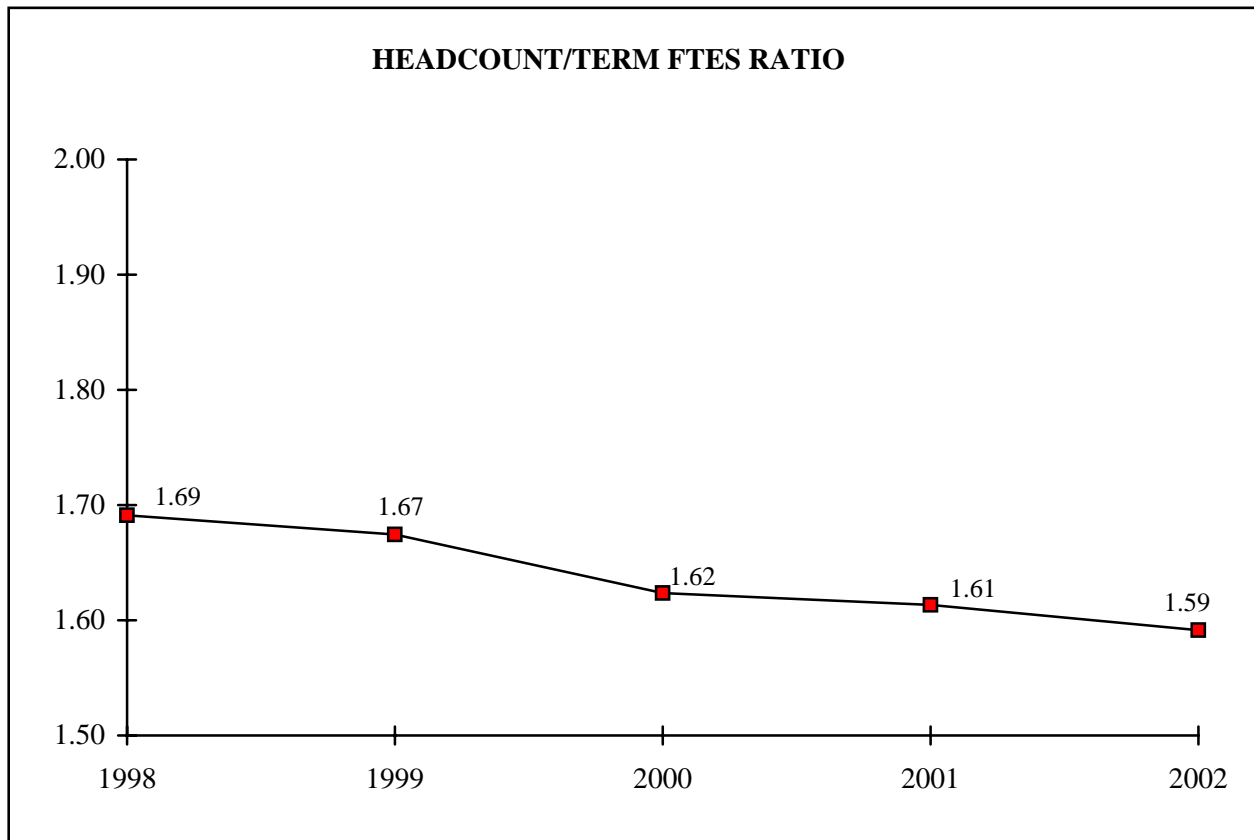
1. Architecture and Planning does not include students for the undergraduate Design and Planning program taught in Boulder.
2. Arts, Fine Arts, Music and Theatre were transferred into Arts and Media FY 1997-98.
3. Data are end-of-term figures.

Source:

Enrollment Reports  
Office of Institutional Research, Planning and Analysis



**COMPARISON OF HEADCOUNT TO TERM FTE STUDENTS  
FALL 1998 THROUGH FALL 2002**



<u>FALL</u>	<u>HEADCOUNT</u>	<u>TERM FTES</u>	<u>HEADCOUNT/TERM FTES RATIO</u>
1998	10,931	6463.79	1.69
1999	10,821	6462.72	1.67
2000	11,050	6805.97	1.62
2001	11,281	6991.97	1.61
2002	11,827	7431.63	1.59

Notes:

1. Data are end-of-term figures.
2. Headcount to FTE Student ratio indicates the number of headcount students it takes to equal one full-time equivalent student at the University.

Source:

Enrollment Reports  
Office of Institutional Research, Planning and Analysis

**ENROLLMENTS BY MAJOR**  
**Fall 2002**

<u>MAJOR CODE</u>		<u>UNDER GRAD</u>	<u>GRAD</u>	<u>TOTAL</u>
<b>COLLEGE OF ARCHITECTURE AND PLANNING</b>			<b>421</b>	<b>421</b>
ARCH	Architecture		234	234
ARUR	Architecture in Urban Design		4	4
DSPL	Design and Planning		31	31
LAND	Landscape Architecture		74	74
URRP	Urban and Regional Planning		78	78
<b>COLLEGE OF BUSINESS</b>		<b>1,202</b>	<b>1,388</b>	<b>2,590</b>
ACCT	Accounting	164	88	252
AMBA	Business Administration-One Year Program		0	0
BGEN	General Business	6		6
FNCE	Finance	236	136	372
HLAD	Health Administration		14	14
INFS	Information Systems	185	201	386
INBU	International Business	103	53	156
MGMT	Management	172		172
MKTG	Marketing	181	50	231
MBAD	Master of Business Administration		644	644
MBAC	Master of Business Administration - Cohort Program		100	100
MBAO	Master of Business Administration Other		2	2
MBAH	Master of Business Administration Health		59	59
ORMG	Organization Management		41	41
PHRM	Human Resources Management	22		22
BUUD	Undetermined	133		133
<b>SCHOOL OF EDUCATION</b>			<b>1,311</b>	<b>1,311</b>
ADSC	Administration Supervision Curriculum Development		4	4
ALPS	Administration Leadership and Professional Studies		134	134
ALAP	Administration Leadership and Professional Studies - Access		0	0
CPCE	Counseling Psychology and Counselor Education		168	168
CEAP	Counseling Psychology and Counselor Education - Access		16	16
CIED	Curriculum and Instruction		498	498
CIAP	Curriculum and Instruction - Access		0	0
ECED	Early Childhood Education		46	46
ECAP	Early Childhood Education - Access		11	11
EPSY	Educational Psychology		29	29
INLT	Information and Learning Technologies		113	113
XINL	Information and Learning Technologies - Executive		1	1
EDLI	Educational Leadership and Innovation		93	93
ADAP	Educational Leadership and Innovation - Access		3	3
NWEA	Non-Degree - Access		2	2
SPED	Special Education		103	103
SPSY	School Psychology		52	52
TECE	Teacher Certification		34	34
TCAP	Teacher Certification - Access		2	2
XTEC	Teacher Certification		2	2
<b>COLLEGE OF ENGINEERING AND APPLIED SCIENCE</b>		<b>613</b>	<b>335</b>	<b>948</b>
AMEN	Applied Mathematics	2		2
CVEN	Civil Engineering	114	84	198
CSCI	Computer Science	260	0	260
CMSC	Computer Science		153	153
EEEN	Electrical Engineering	118	39	157
EECI	Electrical Engineering and Computer Science	1		1
MAEG	Engineering		31	31
MCEN	Mechanical Engineering	92	28	120
ENUD	Undetermined	26		26
				0
<b>GRADUATE SCHOOL OF PUBLIC AFFAIRS</b>			<b>337</b>	<b>337</b>
CRJU	Criminal Justice		60	60
EXPA	Public Administration - Executive		14	14
PADM	Public Administration		201	201
PAWS	Public Administration - Western Slope		10	10
PAFF	Public Affairs		51	51
PADC	Public Administration - Certificate		1	1

**ENROLLMENTS BY MAJOR**

**Fall 2002**

(Continued)

<u>MAJOR CODE</u>		<u>UNDER GRAD</u>	<u>GRAD</u>	<u>TOTAL</u>
<b>COLLEGE OF LIBERAL ARTS AND SCIENCES</b>		<b>3,955</b>	<b>595</b>	<b>4,550</b>
ANTH	Anthropology	60	40	100
AMEN	Applied Mathematics		57	57
BSCI	Basic Science		16	16
BIOL	Biology	468	24	492
CHEM	Chemistry	82	25	107
COMM	Communication	153	32	185
CMTH	Communication and Theatre		1	1
ECON	Economics	96	37	133
ENGL	English	139	42	181
EWRT	English Writing	112		112
EVSC	Environmental Sciences		40	40
FREN	French	28		28
GEOG	Geography	44		44
GEOG	Geology	30		30
GRMN	German	14		14
HBSC	Health and Behavioral Sciences		29	29
HIST	History	128	47	175
HUMN	Humanities		56	56
INST	Individually Structured	57		57
MATH	Mathematics	88		88
PHIL	Philosophy	62		62
PHYS	Physics	27		27
PSCI	Political Science	202	42	244
PRBU	Pre-Business	350		350
PRCH	Pre-Child Health Associate	1		1
PRCO	Pre-Communication	151		151
PRDH	Pre-Dental Hygiene	14		14
PRDE	Pre-Dentistry	14		14
PRED	Pre-Education	0		0
PREN	Pre-Engineering	312		312
PRJR	Pre-Journalism	8		8
PRMD	Pre-Medicine	109		109
PRNU	Pre-Nursing	81		81
PROP	Pre-Optometry	0		0
PRPH	Pre-Pharmacy	45		45
PRPT	Pre-Physical Therapy	9		9
PRVT	Pre-Veterinary Medicine	10		10
PSYC	Psychology	361	31	392
PSYS	Psychology	75		75
SOCS	Social Science		24	24
SOCI	Sociology	104	23	127
SPAN	Spanish	37		37
TECH	Technical Communication		29	29
LAUD	Undetermined	484		484
<b>COLLEGE OF ARTS AND MEDIA</b>		<b>786</b>		<b>786</b>
AVFT	Film and Video Studies	15		15
FINE	Fine Arts - BA Program	63		63
CRAR	Fine Arts - BFA Program	228		228
MUSC	Music	256		256
MUIS	Music Industry Studies	68		68
THTR	Theatre	53		53
AMUD	Undetermined	103		103
<b>OTHER</b>		<b>141</b>	<b>743</b>	<b>884</b>
	Other Units	0	4	4
	Non-Degree	141	739	880
<b>FALL 2002 TOTALS</b>		<b>6,697</b>	<b>5,130</b>	<b>11,827</b>

Notes:

1. Data are end-of-term figures.

Source:

Office of Institutional Research, Planning and Analysis

**ETHNIC DISTRIBUTION OF HEADCOUNT STUDENTS  
FALL SEMESTERS**

	ASIAN AMERICAN		AFRICAN AMERICAN		HISPANIC		NATIVE AMERICAN		MINORITY TOTAL		WHITE <sup>1</sup>		NON-RES ALIEN		TOTAL	
	N	%	N	%	N	%	N	%	N	%	N	%	N	%	N	%
<b>FALL 1998</b>	788	7%	409	4%	939	9%	127	1%	2,263	21%	8,104	74%	564	5%	10,931	100%
<b>FALL 1999</b>	834	8%	413	4%	924	9%	115	1%	2,286	21%	7,952	73%	583	5%	10,821	100%
<b>FALL 2000</b>	881	8%	383	3%	967	9%	115	1%	2346	21%	7966	72%	738	7%	11050	100%
<b>FALL 2001</b>	887	8%	432	4%	957	8%	108	1%	2384	21%	8108	72%	789	7%	11281	100%
<b>FALL 2002</b>	949	8%	420	4%	977	8%	116	1%	2462	21%	8620	73%	745	6%	11827	100%

Notes:

1. Unknowns included in WHITE count.
2. N = student headcount.
3. Data are end-of-term figures.

Source:

Enrollment Reports  
Office of Institutional Research, Planning and Analysis

**AGE DISTRIBUTION  
FALL 2002**

	UNDERGRADUATE			GRADUATE			TOTAL		
	N	%	CUM %	N	%	CUM %	N	%	CUM %
<b>19 &amp; Under</b>	1,319	19.70%	19.70%	1	0.02%	0.02%	1,320	11.16%	11.16%
<b>20-24</b>	3,174	47.39%	67.09%	668	13.02%	13.04%	3,842	32.48%	43.65%
<b>25-29</b>	1,127	16.83%	83.92%	1,766	34.42%	47.47%	2,893	24.46%	68.11%
<b>30-34</b>	516	7.70%	91.62%	1,142	22.26%	69.73%	1,658	14.02%	82.13%
<b>35-39</b>	232	3.46%	95.09%	543	10.58%	80.31%	775	6.55%	88.68%
<b>40-44</b>	152	2.27%	97.36%	362	7.06%	87.37%	514	4.35%	93.02%
<b>45-49</b>	115	1.72%	99.07%	346	6.74%	94.11%	461	3.90%	96.92%
<b>50-54</b>	34	0.51%	99.58%	211	4.11%	98.23%	245	2.07%	98.99%
<b>55-59</b>	19	0.28%	99.87%	75	1.46%	99.69%	94	0.79%	99.79%
<b>60 &amp; over</b>	9	0.13%	100.00%	16	0.31%	100.00%	25	0.21%	100.00%
<b>TOTALS</b>	<b>6,697</b>	<b>100.00%</b>	<b>100.00%</b>	<b>5,130</b>	<b>100.00%</b>	<b>100.00%</b>	<b>11,827</b>	<b>100.00%</b>	<b>100.00%</b>

**AVERAGE  
AGE**

**25**

**33**

**28**

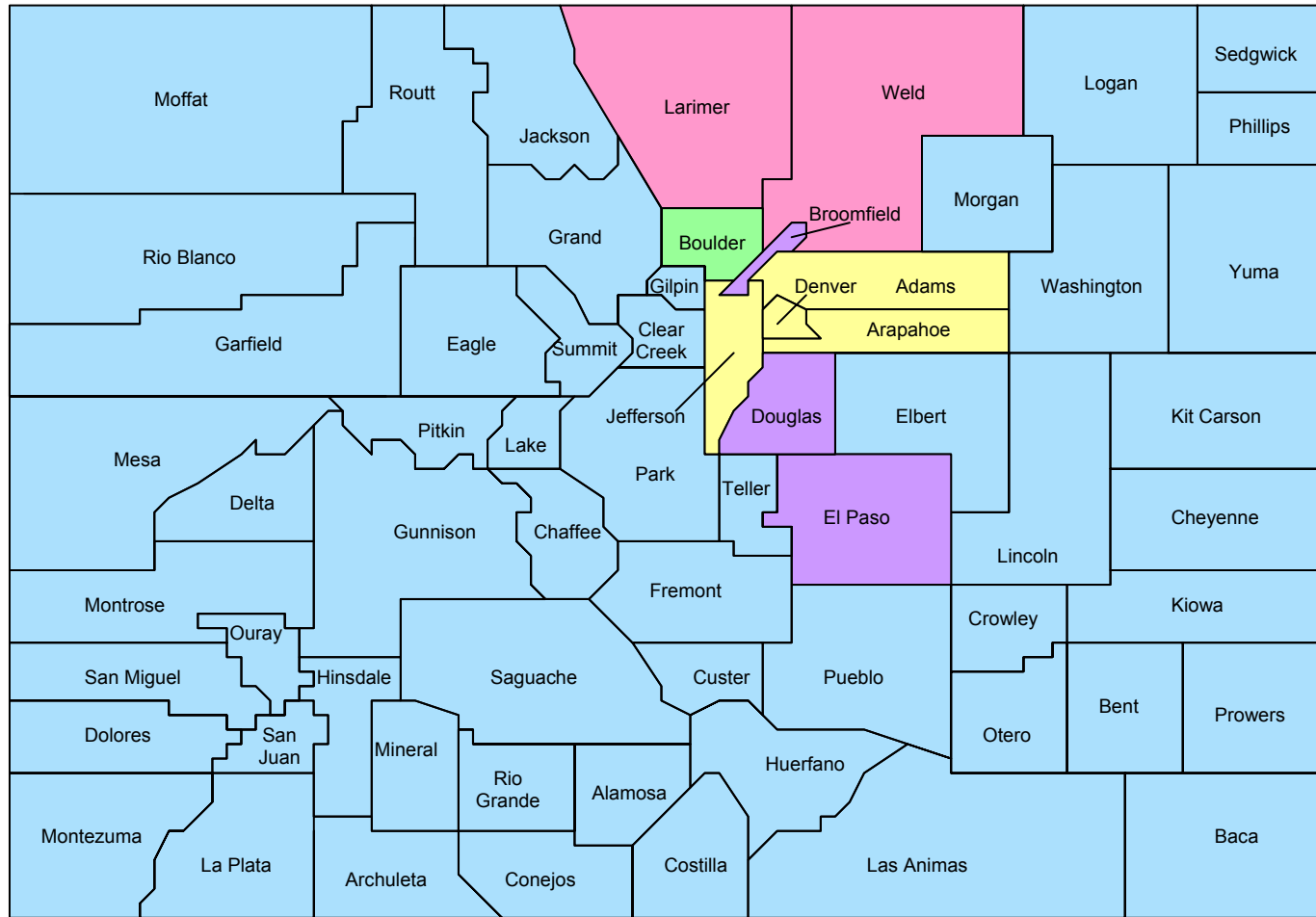
Notes:

1. Data are end-of-term figures.
2. N = student headcount.
3. CUM % = cumulative percent.

Source:

Age Distribution Report  
Office of Institutional Research, Planning and Analysis

## Student Headcount by County Fall, 2002



Outside Colorado ■  
 Unknown ■

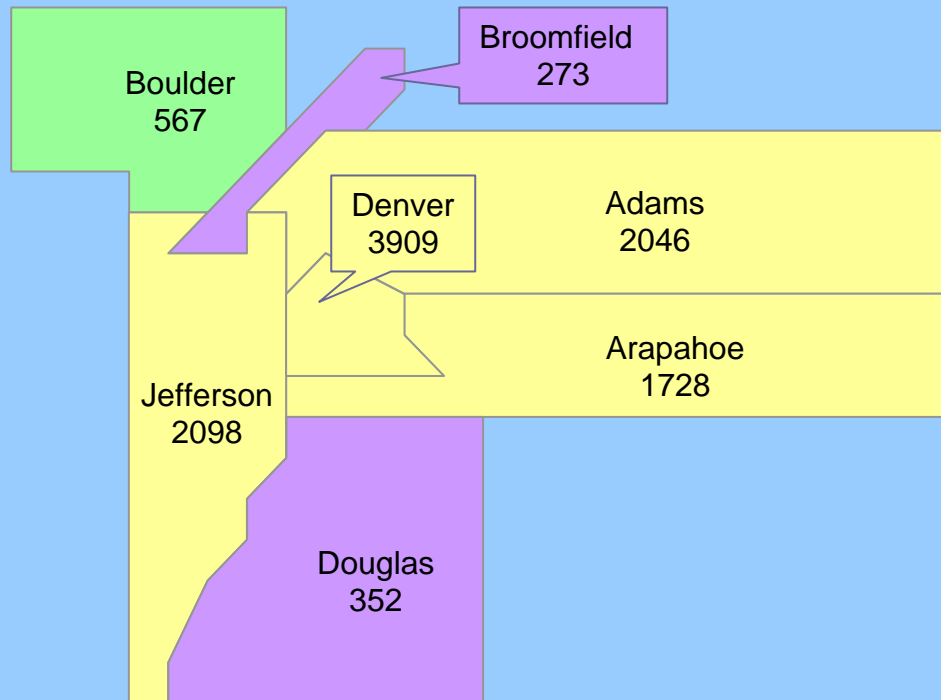
### Legend

■ 1000 +  
■ 500-999  
■ 100-499  
■ 50-99  
■ Less than 50

Note: Residency identified by local zip code or permanent zip code if missing.

# Student Headcount by Metro Denver County

Fall, 2002



Metro Denver total	10,973
Other Colorado	620
Outside of Colorado	130
Unknown	104
Total	11,827

Note: Residency identified by local zip code or permanent zip code if missing.

**AVERAGE STUDENT CREDIT HOUR LOAD  
BY LEVEL FOR FALL SEMESTERS**

<b>FALL SEMESTER</b>	<b>UNDERGRADUATE</b>			<b>GRADUATE</b>			<b>TOTAL</b>		
	<b>STUDENTS</b>	<b>SCH</b>	<b>AVG SCH PER HC</b>	<b>STUDENTS</b>	<b>SCH</b>	<b>AVG SCH PER HC</b>	<b>STUDENTS</b>	<b>SCH</b>	<b>AVG SCH PER HC</b>
1998	5,952	66,911	11.24	4,979	30,046	6.03	10,931	96,957	8.87
1999	6,124	68,559	11.20	4,697	28,382	6.04	10,821	96,941	8.96
2000	6,409	73,729	11.50	4,641	28,361	6.11	11,050	102,090	9.24
2001	6,474	74,489	11.51	4,807	30,391	6.32	11,281	104,880	9.30
2002	6,697	79,143	11.82	5,130	32,932	6.42	11,827	112,075	9.48

Notes:

1. Data are end-of-term figures.
2. SCH = Student Credit Hours.
3. HC = Headcount students.

Source:

Enrollment Reports  
Office of Institutional Research, Planning and Analysis



**UNDERGRADUATE APPLICANTS BY ACADEMIC UNIT  
FALL 2001 AND FALL 2002**

Academic Unit	APPLICATIONS			STUDENTS ADMITTED			STUDENTS REGISTERED		
	Fall 2001	Fall 2002	% Change 01 to 02	Fall 2001	Fall 2002	% Change 01 to 02	Fall 2001	Fall 2002	% Change 01 to 02
<b>Arts &amp; Media</b>	<b>396</b>	<b>539</b>	<b>36.1%</b>	<b>297</b>	<b>389</b>	<b>31.0%</b>	<b>200</b>	<b>229</b>	<b>14.5%</b>
Freshmen	136	210	54.4%	100	149	49.0%	61	76	24.6%
Transfers	240	313	30.4%	177	229	29.4%	126	143	13.5%
Readmitted	20	16	-20.0%	20	11	-45.0%	13	10	-23.1%
<b>Business</b>	<b>645</b>	<b>626</b>	<b>-2.9%</b>	<b>364</b>	<b>365</b>	<b>0.3%</b>	<b>225</b>	<b>231</b>	<b>2.7%</b>
Freshmen	195	211	8.2%	84	90	7.1%	35	41	17.1%
Transfers	410	389	-5.1%	242	252	4.1%	162	175	8.0%
Readmitted	40	26	-35.0%	38	23	-39.5%	28	15	-46.4%
<b>Engineering</b>	<b>329</b>	<b>294</b>	<b>-10.6%</b>	<b>152</b>	<b>151</b>	<b>-0.7%</b>	<b>89</b>	<b>92</b>	<b>3.4%</b>
Freshmen	155	145	-6.5%	69	75	8.7%	33	37	12.1%
Transfers	150	129	-14.0%	63	60	-4.8%	43	47	9.3%
Readmitted	24	20	-16.7%	20	16	-20.0%	13	8	-38.5%
<b>Liberal Arts</b>	<b>2,817</b>	<b>2,722</b>	<b>-3.4%</b>	<b>2,104</b>	<b>2,077</b>	<b>-1.3%</b>	<b>1,210</b>	<b>1,203</b>	<b>-0.6%</b>
Freshmen	1,109	1,212	9.3%	819	900	9.9%	410	479	16.8%
Transfers	1,484	1,306	-12.0%	1,078	990	-8.2%	671	611	-8.9%
Readmitted	224	204	-8.9%	207	187	-9.7%	129	113	-12.4%
<b>Non-Degree</b>	<b>260</b>	<b>242</b>	<b>-6.9%</b>	<b>247</b>	<b>232</b>	<b>-6.1%</b>	<b>127</b>	<b>114</b>	<b>-10.2%</b>
New	203	193	-4.9%	194	186	-4.1%	97	88	-9.3%
Readmitted	57	49	-14.0%	53	46	-13.2%	30	26	-13.3%
<b>TOTAL</b>	<b>4,447</b>	<b>4,423</b>	<b>-0.5%</b>	<b>3,164</b>	<b>3,214</b>	<b>1.6%</b>	<b>1,851</b>	<b>1,869</b>	<b>1.0%</b>
New	4,082	4,108	0.6%	2,826	2,931	3.7%	1,638	1,697	3.6%
Former	365	315	-13.7%	338	283	-16.3%	213	172	-19.2%

Note:

1. "Students Registered" are end-of-term figures.

Source:

Final Fall 2002 Admissions Report  
Office of Admissions and Records

**FY FTE STUDENTS  
BY SCHOOL/COLLEGE AND DEPARTMENT  
1997-98 THROUGH 2001-02**

	<u>1997-98</u>	<u>1998-99</u>	<u>1999-00</u>	<u>2000-01</u>	<u>2001-02</u>
<b>ARCHITECTURE AND PLANNING<sup>1</sup></b>	316.7	326.9	354.3	342.1	337.3
<b>ARTS AND MEDIA<sup>2</sup></b>	391.0	386.5	453.5	525.7	583.1
<b>BUSINESS</b>	1392.1	1484.5	1430.3	1462.0	1527.8
<b>LIBERAL ARTS AND SCIENCES</b>	3444.3	3455.9	3486.6	3688.6	3879.9
Anthropology	116.8	131.9	149.3	151.5	155.3
Biology	321.0	325.9	288.6	283.0	279.4
Chemistry	210.8	222.0	216.0	218.7	205.0
Chinese	9.9	8.2	8.5	7.5	11.7
CNST	0.0	0.0	0.0	3.7	6.7
CLAS	0.0	1.0	2.7	7.1	7.1
Communication	217.5	221.8	235.3	261.4	309.0
Economics	222.5	199.8	195.4	226.8	246.4
English	395.6	406.6	426.5	433.7	448.8
Environmental Sciences	21.7	31.2	33.2	33.9	41.5
Ethnic Studies	18.0	19.3	17.7	16.5	19.0
French	42.3	39.1	40.7	38.1	47.1
Geography	45.2	44.4	52.4	55.4	59.9
Geology	42.4	36.7	36.4	34.3	37.9
German	26.0	23.4	28.6	28.5	28.9
Health and Behavioral Sciences	8.9	10.5	11.1	14.8	11.4
History	147.0	144.2	158.0	179.9	186.6
Honors	1.9	0.0	0.0	0.0	0.0
Humanities	7.8	7.6	9.1	9.5	7.1
Japanese	0.3	0.0	0.0	0.0	0.0
Latin	5.8	5.4	5.2	4.1	11.0
Mathematics	403.9	425.3	403.6	419.3	445.9
Modern Languages	0.4	0.0	0.0	0.0	0.0
Philosophy	173.3	174.3	183.4	196.0	194.9
Physics	184.5	169.3	163.5	178.1	188.7
Political Science	161.7	152.4	143.5	165.3	192.1
Psychology	308.9	303.7	314.8	332.3	337.4
RLST	0.0	0.0	0.0	7.5	20.5
Russian	17.0	12.2	17.8	17.2	11.1
Social Science	11.9	9.4	6.4	6.1	5.6
Sociology	150.4	167.3	180.8	182.7	194.8
Spanish	156.1	144.3	139.4	152.3	165.4
Technical Communication	14.8	18.7	18.7	23.2	3.7
<b>EDUCATION</b>	747.0	762.7	724.0	723.7	800.5
<b>ENGINEERING</b>	598.2	643.8	642.7	649.2	575.9
<b>MILLENNIUM COLLEGE<sup>3</sup></b>	3.5	8.5	8.9	9.3	8.9
<b>PUBLIC AFFAIRS</b>	164.3	160.4	152.2	170.6	179.7
<b>CU-DENVER TOTALS</b>	7057.1	7229.2	7252.5	7571.2	7893.1

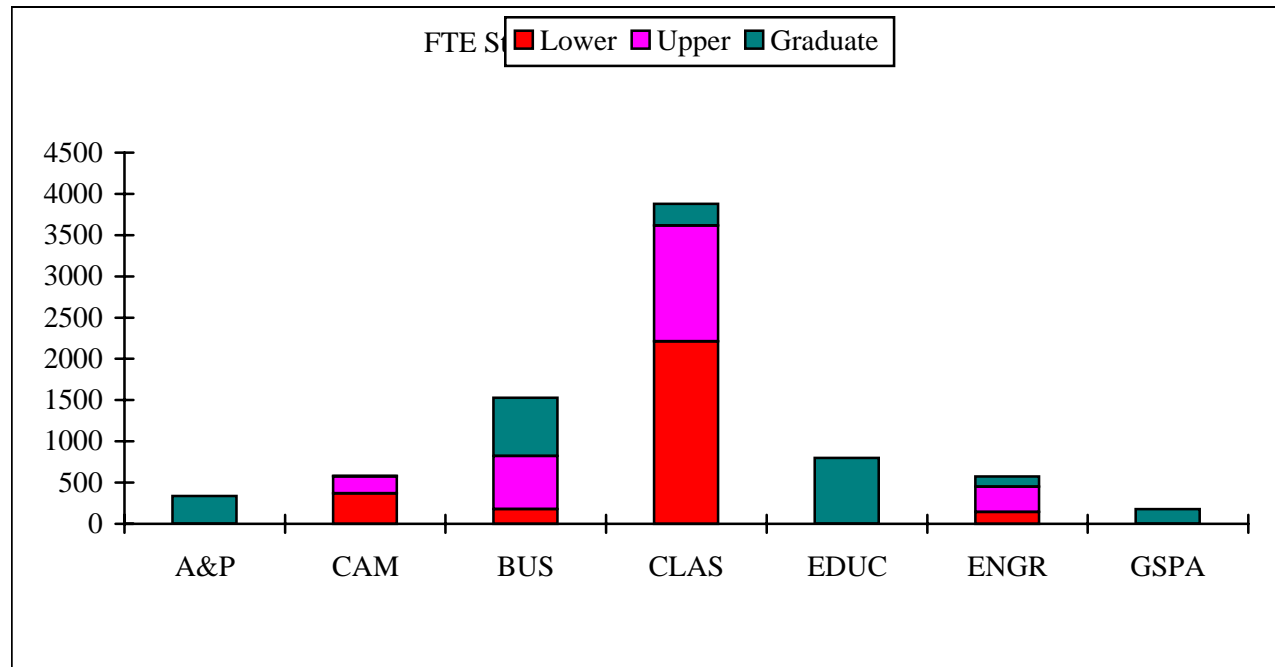
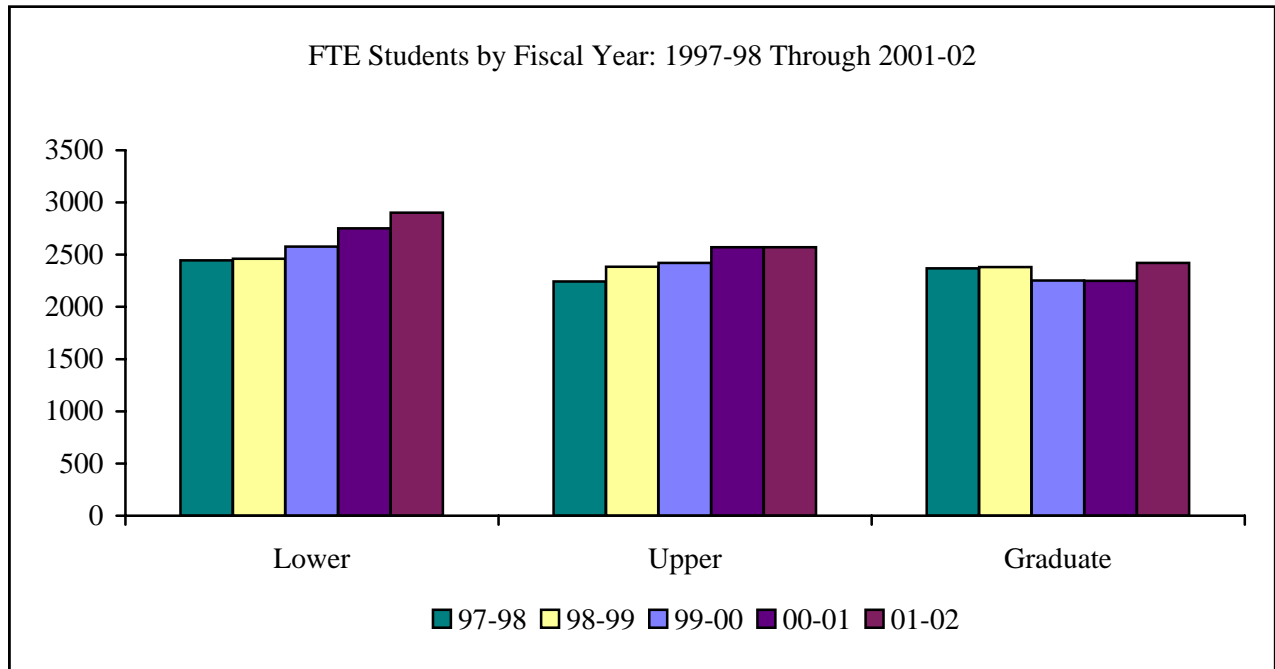
Notes:

1. Architecture and Planning does not include students for the undergraduate Design and Planning program taught in Boulder.
2. Arts, Fine Arts, Music and Theatre were transferred into Arts and Media FY 1997-98.
3. Millennium College courses offered starting FY 1996-97.

Source:

Student Credit Hour Summaries, Office of Institutional Research, Planning and Analysis

## FY FTE STUDENTS BY LEVEL OF INSTRUCTION



**Note:**

1. Architecture and Planning does not include students for the undergraduate Design and Planning program taught in Boulder.
2. Arts, Fine Arts, Music and Theatre were transferred into Arts and Media FY 1997-98.

**Source:**

Student Credit Hour Summaries  
 Office of Institutional Research, Planning and Analysis

**FY FTE STUDENTS  
BY SCHOOL/COLLEGE AND LEVEL OF INSTRUCTION**

	<u>Lower UG</u>	<u>Upper UG</u>	<u>Total UG</u>	<u>Grad I</u>	<u>Grad II</u>	<u>Total Grad</u>	<u>Total</u>
<b>ARCHITECTURE AND PLANNING<sup>1</sup></b>							
1997-98	0.0	1.5	1.5	314.7	0.5	315.2	316.7
1998-99	0.0	0.9	0.9	322.6	3.4	326.0	326.9
1999-00	0.0	0.9	0.9	344.9	8.5	353.4	354.3
2000-01	0.0	0.6	0.6	333.6	7.8	341.4	342.0
2001-02	0.0	0.2	0.2	328.4	8.7	337.1	337.3
<b>ARTS AND MEDIA</b>							
1997-98	265.5	117.5	383.0	8.0	0.0	8.0	391.0
1998-99	264.9	114.9	379.8	6.7	0.0	6.7	386.5
1999-00	306.2	140.1	446.3	7.2	0.0	7.2	453.5
2000-01	349.6	169.2	518.8	6.9	0.0	6.9	525.7
2001-02	369.2	204.7	574.0	9.1	0.0	9.1	583.1
<b>BUSINESS</b>							
1997-98	121.5	521.7	643.2	748.9	0.0	748.9	1392.1
1998-99	142.2	594.4	736.6	747.9	0.0	747.9	1484.5
1999-00	165.3	594.2	759.5	670.8	0.0	670.8	1430.3
2000-01	170.9	634.1	805.0	657.0	0.0	657.0	1462.0
2001-02	178.5	644.9	823.4	704.4	0.0	704.4	1527.8
<b>LIBERAL ARTS AND SCIENCES</b>							
1997-98	1889.7	1296.3	3186.0	241.4	16.9	258.3	3444.3
1998-99	1874.3	1339.0	3213.3	224.9	17.7	242.6	3455.9
1999-00	1941.5	1321.7	3263.2	206.2	17.2	223.4	3486.6
2000-01	2059.5	1394.9	3454.4	217.1	17.1	234.2	3688.6
2001-02	2211.6	1404.4	3616.0	248.0	15.9	263.9	3879.9
<b>EDUCATION</b>							
1997-98	0.0	10.3	10.3	691.0	45.7	736.7	747.0
1998-99	0.0	6.7	6.7	703.4	52.6	756.0	762.7
1999-00	0.0	10.5	10.5	672	41.5	713.5	724.0
2000-01	0.0	5.4	5.4	672.8	45.6	718.4	723.8
2001-02	0.0	1.3	1.3	758.1	41.1	799.2	800.5
<b>ENGINEERING</b>							
1997-98	168.5	291.8	460.3	136.6	1.3	137.9	598.2
1998-99	180.5	320.1	500.6	141.4	1.8	143.2	643.8
1999-00	165.2	346	511.2	129.1	2.4	131.5	642.7
2000-01	171.9	356.5	528.4	116.9	3.9	120.8	649.2
2001-02	142.1	306.6	448.7	124.6	2.6	127.2	575.9
<b>PUBLIC AFFAIRS</b>							
1997-98	0.0	0.0	0.0	134.3	30.0	164.3	164.3
1998-99	0.0	0.0	0.0	134.9	25.5	160.4	160.4
1999-00	0.0	0.0	0.0	126.5	25.7	152.2	152.2
2000-01	0.0	0.0	0.0	143.7	26.9	170.6	170.6
2001-02	0.0	0.0	0.0	155.2	24.5	179.7	179.7
<b>MILLENNIUM COLLEGE<sup>2</sup></b>							
1997-98	0.0	3.5	3.5	0.0	0.0	0.0	3.5
1998-99	0.0	8.5	8.5	0.0	0.0	0.0	8.5
1999-00	0.0	8.9	8.9	0.0	0.0	0.0	8.9
2000-01	0.0	9.3	9.3	0.0	0.0	0.0	9.3
2001-02	0.0	8.9	8.9	0.0	0.0	0.0	8.9
<b>CU-DENVER TOTALS</b>							
1997-98	2445.2	2242.6	4687.8	2274.9	94.4	2369.3	7057.1
1998-99	2461.9	2384.5	4846.4	2281.8	101.0	2382.8	7229.2
1999-00	2578.2	2422.3	5000.5	2156.7	95.3	2252.0	7252.5
2000-01	2751.9	2570.0	5321.9	2148.0	101.3	2249.3	7571.2
2001-02	2901.4	2571.0	5472.5	2327.8	92.8	2420.6	7893.1

Note:

1. Architecture and Planning does not include students for the undergraduate Design and Planning program taught in Boulder.
2. Millennium College courses offered starting FY 1996-97.

Source:

Student Credit Hour Summaries  
Office of Institutional Research, Planning and Analysis

**FTE STUDENTS  
BY SCHOOL/COLLEGE, DEPARTMENT AND  
LEVEL OF INSTRUCTION  
FISCAL YEAR 2001-02**

	<u>Lower UG</u>	<u>Upper UG</u>	<u>Total UG</u>	<u>Grad I</u>	<u>Grad II</u>	<u>Total Grad</u>	<u>TOTAL</u>
<b>ARCHITECTURE AND PLANNING</b> <sup>1</sup>	0.0	0.2	0.2	328.4	8.7	337.1	337.3
<b>ARTS AND MEDIA</b> <sup>2</sup>	369.2	204.7	574.0	9.1	0.0	9.1	583.1
<b>BUSINESS</b>	178.5	644.9	823.4	704.4	0.0	704.4	1527.8
<b>LIBERAL ARTS AND SCIENCES</b>	2211.6	1404.4	3616.1	248.0	15.9	263.9	3879.9
Anthropology	77.7	63.4	141.2	14.1	0.0	14.1	155.3
Biology	129.8	132.3	262.1	17.3	0.0	17.3	279.4
Chemistry	119.5	77.9	197.4	7.6	0.0	7.6	205.0
Chinese	11.7	0.0	11.7	0.0	0.0	0.0	11.7
CNST	6.7	0.0	6.7	0.0	0.0	0.0	6.7
CLAS	4.6	2.5	7.1	0.0	0.0	0.0	7.1
Communication	160.3	125.0	285.3	23.7	0.0	23.7	309.0
Economics	146.2	74.5	220.7	25.7	0.0	25.7	246.4
English	235.4	187.5	422.9	25.9	0.0	25.9	448.8
Environmental Sciences	33.4	0.0	33.4	8.2	0.0	8.2	41.6
Ethnic Studies	1.7	17.3	19.0	0.0	0.0	0.0	19.0
French	34.3	12.7	47.0	0.1	0.0	0.1	47.1
Geography	34.2	24.8	59.0	0.9	0.0	0.9	59.9
Geology	28.1	9.7	37.8	0.1	0.0	0.1	37.9
German	23.4	5.5	28.9	0.0	0.0	0.0	28.9
Health and Behavioral Sciences	0.0	1.3	1.3	0.3	9.8	10.1	11.4
History	77.5	85.4	162.9	23.7	0.0	23.7	186.6
Honors	0.0	0.0	0.0	0.0	0.0	0.0	0.0
Humanities	0.0	1.2	1.2	5.9	0.0	5.9	7.1
Japanese	0.0	0.0	0.0	0.0	0.0	0.0	0.0
Latin	11.0	0.0	11.0	0.0	0.0	0.0	11.0
Mathematics	300.8	112.2	413.0	26.8	6.1	32.9	445.9
Modern Languages	0.0	0.0	0.0	0.0	0.0	0.0	0.0
Philosophy	129.1	58.7	187.8	7.1	0.0	7.1	194.9
Physics	179.2	8.8	188.0	0.7	0.0	0.7	188.7
Political Science	51.5	115.0	166.5	25.6	0.0	25.6	192.1
Psychology	175.8	145.0	320.8	16.6	0.0	16.6	337.4
RLST	5.4	15.1	20.5	0.0	0.0	0.0	20.5
Russian	10.2	0.9	11.1	0.0	0.0	0.0	11.1
Social Science	0.0	0.0	0.0	5.6	0.0	5.6	5.6
Sociology	76.8	108.3	185.1	9.7	0.0	9.7	194.8
Spanish	147.3	17.7	165.0	0.4	0.0	0.4	165.4
Technical Communication	0.0	1.7	1.7	2.0	0.0	2.0	3.7
<b>EDUCATION</b>	0.0	1.3	1.3	758.1	41.1	799.2	800.5
<b>ENGINEERING</b>	142.1	306.6	448.7	124.6	2.6	127.2	575.9
<b>PUBLIC AFFAIRS</b>	0.0	0.0	0.0	155.2	24.5	179.7	179.7
<b>MILLENNIUM COLLEGE</b> <sup>3</sup>	0.0	8.9	8.9	0.0	0.0	0.0	8.9
<b>CU-DENVER TOTALS</b>	2901.4	2571.0	5472.6	2327.8	<b>92.8</b>	<b>2420.6</b>	<b>7893.1</b>

Note:

1. Architecture and Planning does not include students for the undergraduate Design and Planning program taught in Boulder
2. Arts, Fine Arts, Music and Theatre were transferred into Arts and Media FY 1997-98.
3. Millennium College courses offered starting FY 1996-97

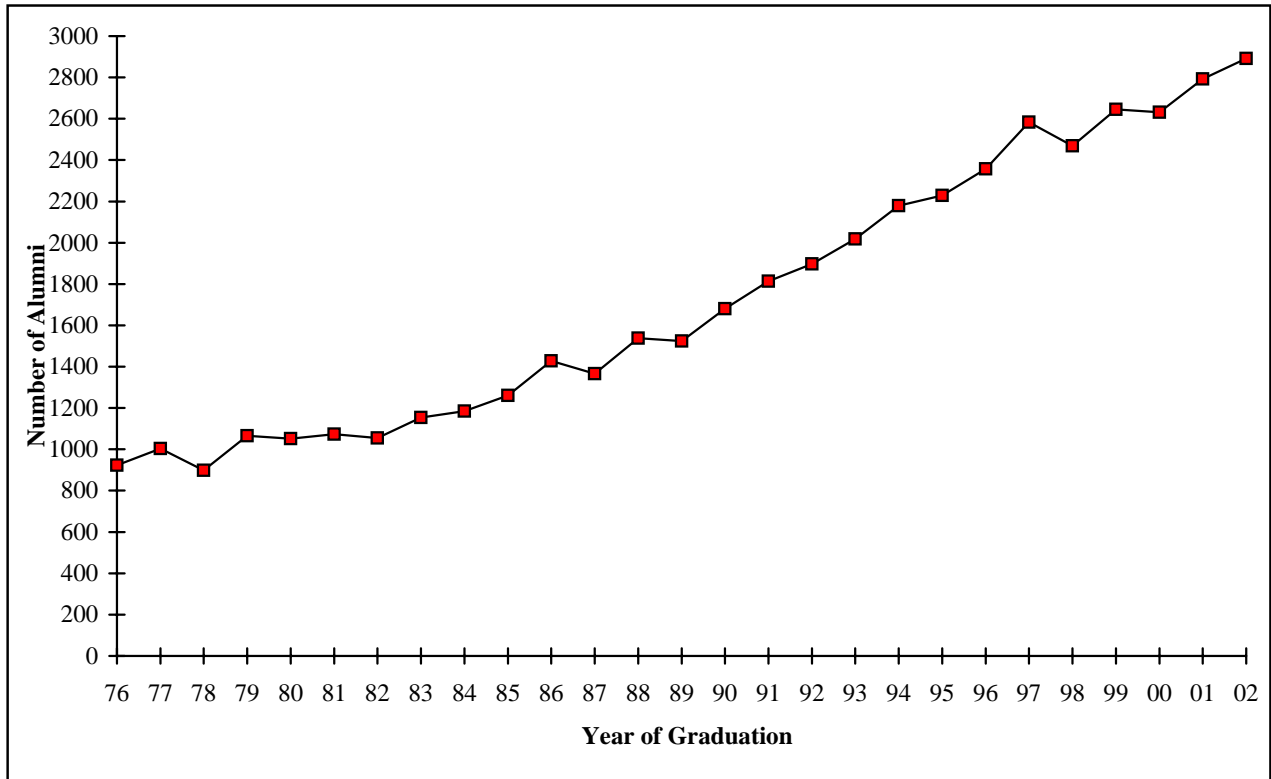
Source:

Student Credit Hour Summaries  
Office of Institutional Research, Planning and Analysis



# Alumni Data

## ALUMNI BY YEAR OF GRADUATION



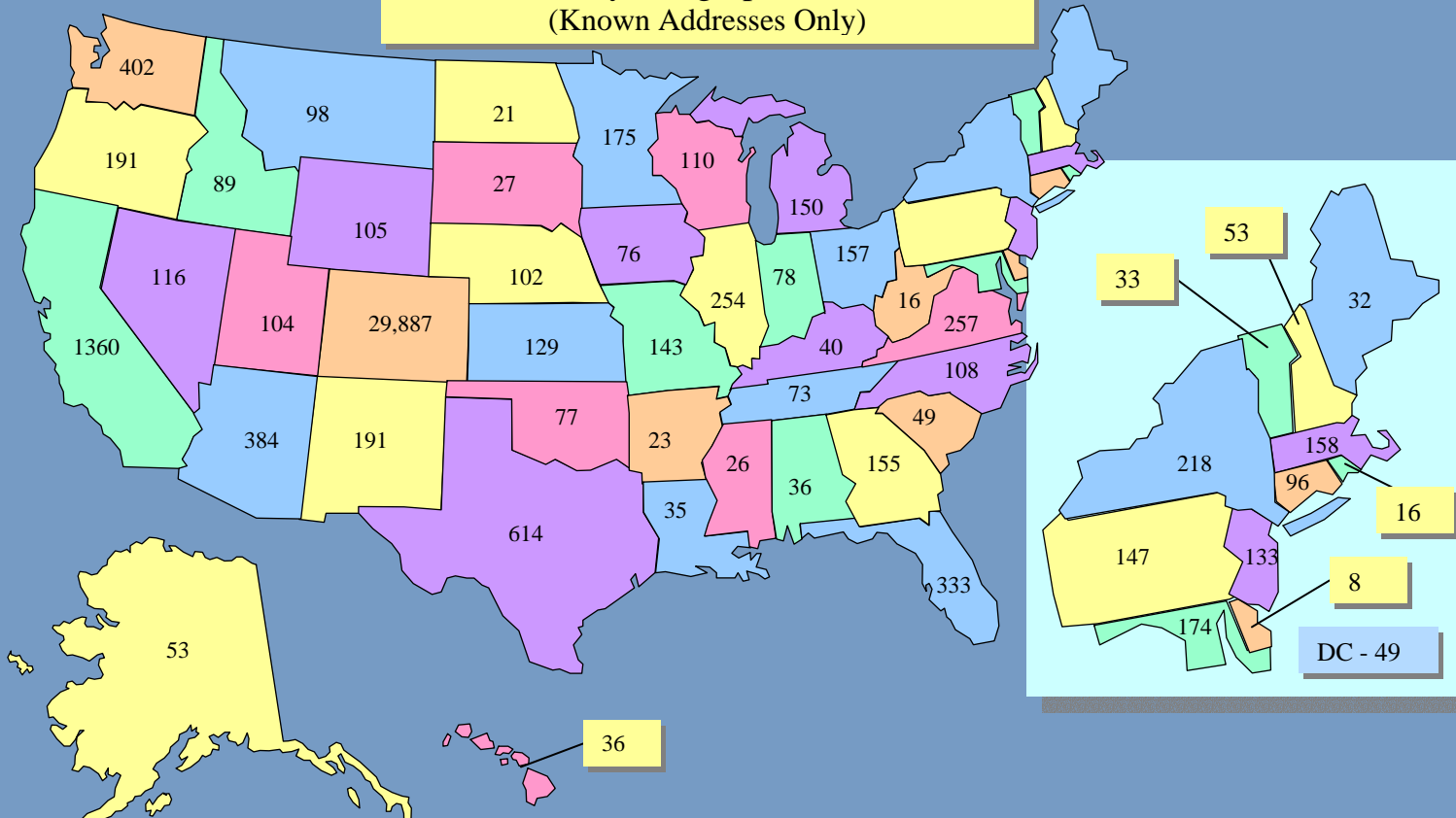
YEAR OF GRADUATION	NUMBER OF ALUMNI
BEFORE 1975	5,053
1975-80	4,943
1980-81	1,074
1981-82	1,055
1982-83	1,154
1983-84	1,185
1984-85	1,261
1985-86	1,428
1986-87	1,366
1987-88	1,538
1988-89	1,524
1989-90	1,681
1990-91	1,813
1991-92	1,897
1992-93	2,018
1993-94	2,179
1994-95	2,228
1995-96	2,357
1996-97	2,584
1997-98	2,468
1998-99	2,645
1999-00	2,631
2000-01	2,792
2001-02	2,892
<b>TOTAL</b>	<b>51,766</b>

Sources:

University of Colorado Foundation Counts Reports for years prior to 1975-76  
 CCHE Degree Programs Offered and Certificates & Degrees Conferred for 1975-76 and later



## Alumni by Geographic Location (Known Addresses Only)



**ALUMNI BY DEGREES  
CUMULATIVE 1975-76 THROUGH 2001-02**

	<b>UNDER <u>GRAD</u></b>	<b><u>GRAD</u></b>	<b>SCHOOL/ COLLEGE <u>TOTAL</u></b>
<b>COLLEGE OF ARCHITECTURE AND PLANNING</b>			
Architecture	0	1,482	1,482
Interior Design	0	48	48
Landscape Architecture	0	368	368
Urban/Regional Planning	0	731	731
Urban Design	0	136	136
Design and Planning	0	2	2
Design Studies	0	1	1
<b>TOTAL</b>	<b>0</b>	<b>2,768</b>	<b>2,768</b>
<b>COLLEGE OF ARTS &amp; MEDIA</b>			
Fine Arts	149	0	149
Music	98	0	98
Theatre	24	0	24
<b>TOTAL</b>	<b>271</b>	<b>0</b>	<b>271</b>
<b>COLLEGE OF BUSINESS</b>			
Accounting	0	493	493
Business Administration	6,407	4,862	11,269
Finance	0	809	809
Health Administration	0	558	558
Information Systems	0	714	714
International Business	0	64	64
Management and Organization	0	353	353
Marketing	0	300	300
<b>TOTAL</b>	<b>6,407</b>	<b>8,153</b>	<b>14,560</b>
<b>SCHOOL OF EDUCATION</b>			
Administration Leadership & Policy Studies	0	541	541
Counseling Psychology and Counselor Education	0	1,446	1,446
Curriculum and Instruction	0	1,960	1,960
Early Childhood Education	0	330	330
Educational Psychology	0	231	231
Educational Leadership and Innovation	0	111	111
Elementary Education	178	307	485
Information and Learning Technologies	0	579	579
Reading	0	242	242
Rehabilitation Services	89	0	89
Secondary Education	17	279	296
Social Foundations	0	34	34
Special Education	0	402	402
School Psychology	0	46	46
<b>TOTAL</b>	<b>284</b>	<b>6,508</b>	<b>6,792</b>
<b>COLLEGE OF ENGINEERING</b>			
Applied Mathematics	83	0	83
Civil Engineering	1,002	452	1,454
Computer Science	0	241	241
Computer Science and Engineering	518	0	518
Electrical Engineering	1,438	315	1,753
Engineering	0	55	55
Mechanical Engineering	810	126	936
<b>TOTAL</b>	<b>3,851</b>	<b>1,189</b>	<b>5,040</b>

**ALUMNI BY DEGREES**  
**CUMULATIVE 1975-76 THROUGH 2001-02**  
(Continued)

	<b>UNDER GRAD</b>	<b>GRAD</b>	<b>SCHOOL/ COLLEGE TOTAL</b>
<b>COLLEGE OF LIBERAL ARTS AND SCIENCES</b>			
Anthropology	335	131	466
Applied Mathematics	0	225	225
Basic Science	0	97	97
Biology	1,366	157	1,523
Chemistry	319	85	404
Communication	310	20	330
Communication and Theatre	829	137	966
Communication Disorders Speech Science	0	30	30
Distributed Studies	88	0	88
Economics	780	288	1,068
English	721	185	906
English Writing	437	0	437
Environmental Sciences	0	156	156
Ethnic Studies	28	0	28
Fine Arts	536	0	536
French	128	0	128
Geography	154	8	162
Geology	264	0	264
German	54	0	54
Health and Behavioral Sciences	0	15	15
History	579	160	739
Humanities	0	187	187
Individually Structured Major	549	0	549
Mathematics	582	24	606
Music	364	0	364
Philosophy	189	0	189
Physics	80	0	80
Political Science	921	154	1,075
Population Dynamics	14	0	14
Psychology	1,906	348	2,254
Psychology BS	52	0	52
Social Science	0	170	170
Sociology	450	125	575
Spanish	156	0	156
Technical Communication	0	125	125
Urban Studies	47	8	55
<b>TOTAL</b>	<b>12,238</b>	<b>2,835</b>	<b>15,073</b>
<b>GRADUATE SCHOOL OF PUBLIC AFFAIRS</b>			
Criminal Justice	0	286	286
Public Administration	0	1,833	1,833
Public Affairs	0	90	90
<b>TOTAL</b>	<b>0</b>	<b>2,209</b>	<b>2,209</b>
<b>TOTAL CU-DENVER</b>	<b>23,051</b>	<b>23,662</b>	<b>46,713</b>

Source:

University of Colorado at Denver Degrees Conferred Reports  
and Foundation Reports, 1975-76 through 2001-02



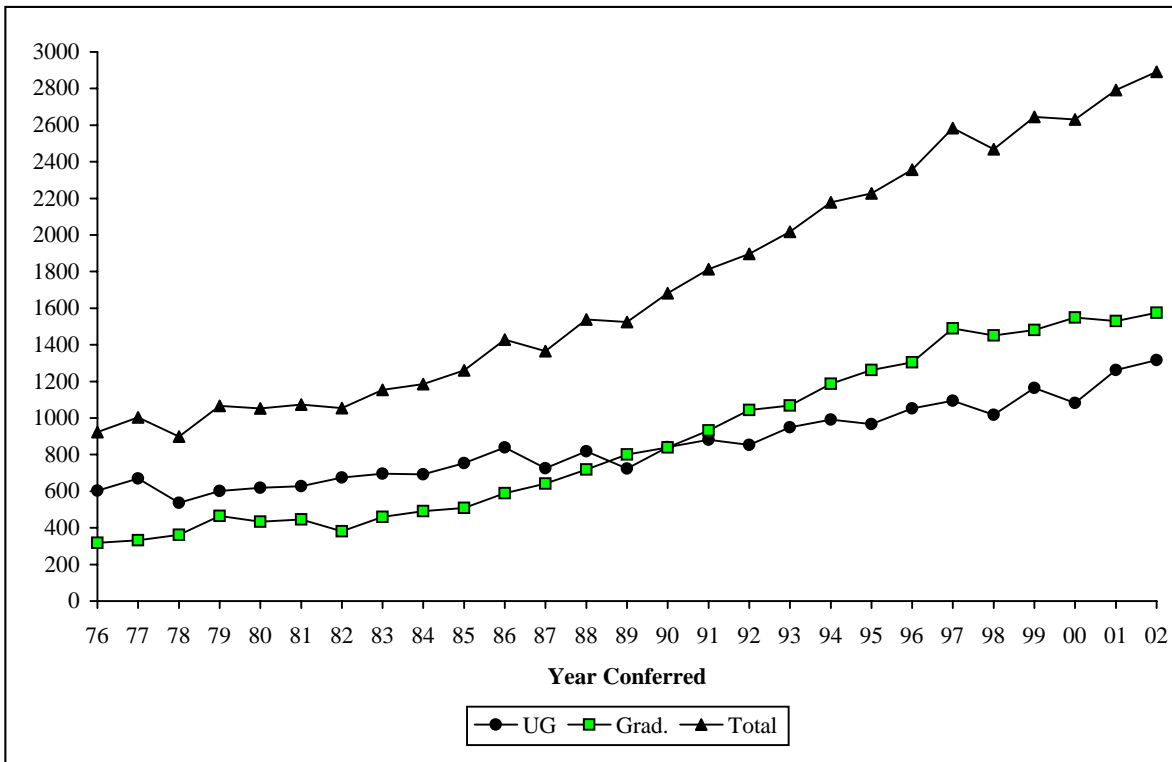
Degree Data

**(CCHE Approved Degree Programs)  
2002-03 Academic Year  
DEGREES OFFERED BY SCHOOL/COLLEGE AND PROGRAM**

<u>School/College</u>	<u>CIP 2000</u>	<u>CIP 1990</u>	<u>School/College/Program</u>	<u>Bachelor</u>	<u>Master</u>	<u>Doctorate</u>	<u>Other</u>
<b>COLLEGE OF ARTS AND MEDIA</b>							
	50.0702	50.0701	Fine Arts	BA/BFA			
	50.0102	50.0901	Music	BS			
	50.9999	50.9999	Recording Arts		MS		
	50.0501	50.0501	Theatre	BA			
<b>COLLEGE OF ARCHITECTURE AND PLANNING</b>							
	04.0201	04.0201	Architecture		M.ARCH		
	04.0401	04.0401	Design and Planning			PH.D.	
	04.0601	04.0601	Landscape Architecture		M.LA		
	04.0301	04.0301	Urban and Regional Planning		M.URP		
	04.0301	04.0701	Urban Design		M.UD		
<b>COLLEGE OF BUSINESS</b>							
	52.0301	52.0301	Accounting		MS		
	52.0101	52.0201	Business Administration	BS	MBA		
	52.0801	52.0801	Finance		MS		
	51.0701	51.0701	Health Administration		MS		
	11.0401	11.0401	Information Systems		MS		
	52.1101	52.1101	International Business		MSIB		
	52.1003	52.1003	Management and Organization		MS		
	52.1401	52.1401	Marketing		MS		
	11.0101	11.0101	Computer Science & Information Systems			PH.D.	
<b>COLLEGE OF LIBERAL ARTS AND SCIENCES</b>							
	45.0201	45.0201	Anthropology	BA	MA		
	27.0301	27.0301	Applied Mathematics		MS	PH.D.	
	26.0001	26.0101	Biology	BS	MA		
	40.0501	40.0501	Chemistry	BS	MS		
	09.0101	09.0101	Communication	BA	MA		
	45.0601	45.0601	Economics	BA	MA		
	23.0101	23.0101	English	BA	MA		
	23.0401	23.0401	English Writing Program	BA			
	3.0104	03.0102	Environmental Sciences		MS		
	16.0901	16.0901	French	BA			
	45.0701	45.0701	Geography	BA			
	30.1701	30.9999	Health and Behavioral Sciences			PH.D.	
	54.0101	45.0801	History	BA	MA		
	24.0103	24.0103	Humanities		MH		
	30.9999	30.9999	Individually Structured Major	BA			
	30.0101	30.0101	Master of Integrated Sciences		MIS		
	27.0101	27.0101	Mathematics	BS			
	38.0101	38.0101	Philosophy	BA			
	40.0801	40.0801	Physics	BS			
	45.1001	45.1001	Political Science	BA	MA		
	42.0101	42.0101	Psychology	BA	MA		
	42.1101	42.1101	Psychology	BS			
	45.0101	45.0101	Social Science		MSS		
	45.1101	45.1101	Sociology	BA	MA		
	16.0905	16.0905	Spanish	BA			
	23.1101	23.1101	Technical Communication		MS		
<b>SCHOOL OF EDUCATION</b>							
	13.0401	13.0401	Administrative Leadership and Policy Studies		MA		ED.S
	13.1101	13.1101	Counseling Psychology and Counselor Educ.		MA		
	13.0301	13.0301	Curriculum and Instruction		MA		
	13.1204	13.1204	Early Childhood Education		MA		
	13.0401	13.0401	Educational Leadership and Innovation			PH.D.	
	42.1801	13.0802	Educational Psychology		MA		
	25.0101	25.0101	Information and Learning Technologies		MA		
	42.1701	42.1701	School Psychology				ED.S
	13.1001	13.1001	Special Education		MA		
<b>COLLEGE OF ENGINEERING AND APPLIED SCIENCE</b>							
	14.0801	14.0801	Civil Engineering	BS	MS	PH.D.	
	11.0101	11.0101	Computer Science		MS		
	11.0101	11.0701	Computer Science and Engineering	BS			
	14.1001	14.1001	Electrical Engineering	BS	MS		
	14.0101	14.0101	Engineering		M.Eng.		
	14.1901	14.1901	Mechanical Engineering	BS	MS		
	11.0101	11.0101	Computer Science & Information Systems			PH.D.	
<b>GRADUATE SCHOOL OF PUBLIC AFFAIRS</b>							
	43.0103	43.0103	Criminal Justice		MCJ		
	44.0401	44.0401	Public Administration		MPA		
	44.0401	44.0401	Public Affairs			PH.D.	

Source: CCHE Approved Postsecondary Degree and Certificate Programs

**DEGREES CONFERRED  
1975-76 THROUGH 2001-02**



Year	Bacc.	Master	Doctorate	Ed.S.	Total
1975-76	604	319			923
1976-77	670	333			1,003
1977-78	537	362			899
1978-79	601	465			1,066
1979-80	619	433			1,052
1980-81	628	444	2		1,074
1981-82	674	380	1		1,055
1982-83	695	456	3		1,154
1983-84	693	485	7		1,185
1984-85	753	503	5		1,261
1985-86	839	582	7		1,428
1986-87	725	637	4		1,366
1987-88	819	711	8		1,538
1988-89	723	778	23		1,524
1989-90	841	817	22	1	1,681
1990-91	881	906	21	5	1,813
1991-92	853	1,025	16	3	1,897
1992-93	950	1,035	26	7	2,018
1993-94	992	1,174	12	1	2,179
1994-95	966	1,243	18	1	2,228
1995-96	1,052	1,273	26	6	2,357
1996-97	1,094	1,459	28	3	2,584
1997-98	1,017	1,424	25	2	2,468
1998-99	1,164	1,437	38	6	2,645
1999-00	1,082	1,517	25	7	2,631
2000-01	1,262	1,469	29	32	2,792
2001-02	1,317	1,517	39	19	2,892
<b>Total</b>	<b>23,051</b>	<b>23,184</b>	<b>385</b>	<b>93</b>	<b>46,713</b>

Source: CCHE Degrees Awarded Reports

**DEGREES CONFERRED BY GENDER  
2001-02**

	GENDER					
	Undergraduate			Graduate		
	Male	Female	Total	Male	Female	Total
<b>ARCHITECTURE AND PLANNING</b>				<b>78</b>	<b>52</b>	<b>130</b>
Architecture				53	20	73
Design and Planning				1	1	2
Landscape Architecture				4	9	13
Urban and Regional Planning				17	20	37
Urban Design				3	2	5
<b>ARTS AND MEDIA</b>	<b>42</b>	<b>58</b>	<b>100</b>			
Fine Arts	18	32	50			
Music	22	14	36			
Theatre	2	12	14			
<b>BUSINESS</b>	<b>149</b>	<b>199</b>	<b>348</b>	<b>361</b>	<b>210</b>	<b>571</b>
Accounting				13	11	24
Business Administration	149	199	348	198	126	324
Finance				45	19	64
Health Administration				4	3	7
Information Systems				74	29	103
International Business				8	7	15
Management and Organization				8	5	13
Marketing				11	10	21
<b>LIBERAL ARTS AND SCIENCES</b>	<b>207</b>	<b>490</b>	<b>697</b>	<b>74</b>	<b>79</b>	<b>153</b>
Anthropology	5	14	19	2	4	6
Applied Mathematics				7	3	10
Basic Science						
Biology	18	42	60	3	2	5
Chemistry	8	8	16	2	4	6
Communication	24	84	108		2	2
Economics	46	87	133	24	10	34
English	8	22	30	3	4	7
English Writing	14	20	34			
Environmental Sciences				3	3	6
Ethnic Studies						
French		9	9			
Geography	3	4	7			
Geology	1	2	3			
German	1	3	4			
Health and Behavioral Sciences				2	4	6
History	8	17	25	4	4	8
Humanities				7	8	15
Individually Structured Major	3	10	13			
Mathematics	12	8	20			
Philosophy	9	11	20			
Physics	2		2			
Political Science	21	27	48	7	8	15
Psychology	15	76	91	5	8	13
Psychology BS	1	12	13			
Social Science	5	28	33		4	4
Sociology					4	4
Spanish	3	6	9			
Technical Communication				5	7	12
<b>EDUCATION</b>				<b>115</b>	<b>382</b>	<b>497</b>
Admin., Leadership & Policy				12	12	24
Counseling Psych. and Counselor Educ.				15	53	68
Curriculum and Instruction				45	172	217
Early Childhood Education				2	15	17
Educational Leadership & Innovation				8	13	21
Educational Psychology				2	24	26
Information and Learning Tech.				20	57	77
Special Education				6	25	31
School Psychology				5	11	16
<b>ENGINEERING</b>	<b>143</b>	<b>29</b>	<b>172</b>	<b>82</b>	<b>19</b>	<b>101</b>
Applied Mathematics	1		1			
Civil Engineering	15	4	19	21	3	24
Computer Science	42	15	57	33	10	43
Computer Science and Engineering						
Engineering				16	5	21
Electrical Engineering	37	6	43	7		7
Mechanical Engineering	48	4	52	5	1	6
<b>PUBLIC AFFAIRS</b>				<b>51</b>	<b>72</b>	<b>123</b>
Criminal Justice				9	16	25
Public Administration				42	56	98
<b>CU-DENVER TOTAL</b>	<b>541</b>	<b>776</b>	<b>1,317</b>	<b>761</b>	<b>814</b>	<b>1,575</b>

Source: CCHE Degrees Awarded Reports



**DEGREES CONFERRED BY ETHNICITY  
2001-02**

	ETHNICITY													
	Undergraduate							Graduate						
	Afr.		Nat.		NonRes.			Afr.		Nat.		NonRes.		
Asian	Amer.	Hisp.	Amer.	White <sup>1</sup>	Alien	Total	Asian	Amer.	Hisp.	Amer.	White <sup>1</sup>	Alien	Total	
<b>ARCHITECTURE AND PLANNING</b>														
Architecture							4	1	5	2	96	22	130	
Design and Planning							3		3	2	50	15	73	
Landscape Architecture											1	1	2	
Urban and Regional Planning											11	2	13	
Urban Design							1	1	2		30	3	37	
											4	1	5	
<b>ARTS AND MEDIA</b>	7	2	6	0	82	3	100							
Fine Arts	5	2	3		40		50							
Music	2		2		31	1	36							
Theatre			1		11	2	14							
<b>BUSINESS</b>	54	10	35	2	214	33	348	19	11	20	0	419	102	571
Accounting							0	3	1	1		15	4	24
Business Administration	54	10	35	2	214	33	348	10	6	13		265	30	324
Finance							0	1	1	3		38	21	64
Health Administration							0			1		6		7
International Business							0			1		10	4	15
Information Systems							0	5	2	1		64	31	103
Management and Organization							0		1			11	1	13
Marketing							0					10	11	21
<b>LIBERAL ARTS AND SCIENCES</b>	28	24	61	4	414	166	697	3	1	5	2	109	33	153
Anthropology	2		2	1	14		19					6		6
Applied Mathematics							0			1	1	7	1	10
Basic Science														
Biology	4	3	4	1	48		60	1				3	1	5
Chemistry	3	2	1		9	1	16					5	1	6
Communication	2	4	8		57	37	108					2		2
Economics	6		1		11	115	133	1		1		5	27	34
English		2			28		30					6	1	7
English Writing	1	3	4		26		34							0
Environmental Sciences							0					5	1	6
Ethnic Studies														
French					8	1	9							0
Geography			2		5		7							0
Geology					3		3							0
German					4		4							0
Health and Behavioral Sciences							0					6		6
History		1	5		19		25			1		7		8
Humanities							0		1			14		15
Individually Structured Major		1		1	9	2	13							0
Mathematics	3		2		14	1	20							0
Philosophy			1		18	1	20							0
Physics					2		2							0
Political Science	2	3	8		29	6	48			2	1	11	1	15
Psychology	4	3	10	1	72	1	91					13		13
Psychology BS			3		10		13							0
Social Science							0					4		4
Sociology	1	2	8		21	1	33					4		4
Spanish			2		7		9							0
Technical Communication							0	1				11		12
<b>EDUCATION</b>								17	8	33	4	426	9	497
Admin., Leadership & Policy									2	4		18		24
Counseling Psych. and Counselor Educ.								4		3	1	59	1	68
Curriculum and Instruction								7	2	16	3	187	2	217
Early Childhood Education												13	4	17
Educational Leadership & Innovation								2		1		17	1	21
Educational Psychology								2	2			21	1	26
Information and Learning Tech.								2	2	4		69		77
Special Education										2		29		31
School Psychology										3		13		16
<b>ENGINEERING</b>	26	7	12	4	102	21	172	11	3	3	0	67	17	101
Applied Mathematics						1	1					15	5	24
Civil Engineering			1	2	15	1	19	3	1					4
Computer Science	23	6	2	1	21	4	57	5		1		29	8	43
Computer Science and Engineering														
Engineering								1		2		14	4	21
Electrical Engineering	1		5	1	31	5	43	1	1			5		7
Mechanical Engineering	2	1	4		35	10	52	1	1			4		6
<b>PUBLIC AFFAIRS</b>								1	7	6	3	95	11	123
Criminal Justice									3	1	1	20		25
Public Administration								1	4	5	2	68	11	91
Public Affairs												7		7
<b>CU-DENVER TOTAL</b>	<b>115</b>	<b>43</b>	<b>114</b>	<b>10</b>	<b>812</b>	<b>223</b>	<b>1,317</b>	<b>55</b>	<b>31</b>	<b>72</b>	<b>11</b>	<b>1,212</b>	<b>194</b>	<b>1,575</b>

Note:  
1. Students with Unknown ethnicity are included under "White" count.

Source: CCHE Degrees Awarded Reports





## Faculty Data



**FULL-TIME INSTRUCTIONAL FACULTY  
2002 - 2003**

**DISTRIBUTION BY GENDER**

<u>School/College</u>	<u>Male</u>		<u>Female</u>		<u>Total No.</u>
	<u>No.</u>	<u>%</u>	<u>No.</u>	<u>%</u>	
Architecture and Planning <sup>1</sup>	25	75.76%	8	24.24%	33
Arts and Media	28	62.22%	17	37.78%	45
Business	44	70.97%	18	29.03%	62
Liberal Arts and Sciences	130	61.61%	81	38.39%	211
Education	17	34.00%	33	66.00%	50
Engineering	33	80.49%	8	19.51%	41
Public Affairs	10	66.67%	5	33.33%	15
<b>Total CU-Denver</b>	<b>287</b>	<b>62.80%</b>	<b>170</b>	<b>37.20%</b>	<b>457</b>

**DISTRIBUTION BY HIGHEST DEGREE AWARDED**

<u>School/College</u>	<u>Associate</u>		<u>Bachelor</u>		<u>Master</u>		<u>Doctorate</u>		<u>Total No.</u>
	<u>No.</u>	<u>%</u>	<u>No.</u>	<u>%</u>	<u>No.</u>	<u>%</u>	<u>No.</u>	<u>%</u>	
Architecture and Planning <sup>1</sup>	0	0.00%	3	9.09%	19	57.58%	11	33.33%	33
Arts and Media	1	2.33%	2	4.65%	30	69.77%	10	23.26%	43
Business	0	0.00%	1	1.61%	8	12.90%	53	85.48%	62
Liberal Arts and Sciences	0	0.00%	2	0.95%	36	17.06%	173	81.99%	211
Education	0	0.00%	0	0.00%	2	4.00%	48	96.00%	50
Engineering	0	0.00%	0	0.00%	2	4.88%	39	95.12%	41
Public Affairs	0	0.00%	0	0.00%	0	0.00%	15	100.00%	15
<b>Total CU-Denver</b>	<b>1</b>	<b>0.22%</b>	<b>8</b>	<b>1.76%</b>	<b>97</b>	<b>21.32%</b>	<b>349</b>	<b>76.70%</b>	<b>455</b>

Notes:

1. Architecture and Planning does not include faculty for the undergraduate programs taught in Boulder.
2. Excludes Administrative Faculty.
3. Data as of October 1, 2002.

Source:

Faculty Data File  
Office of Institutional Research, Planning and Analysis

**FULL-TIME INSTRUCTIONAL FACULTY  
2002 - 2003**

**DISTRIBUTION BY TENURE STATUS**

	Non-Tenure Track		Tenure Track		Tenured		Total	% Tenured
	Male	Female	Male	Female	Male	Female		
Architecture and Planning <sup>1</sup>	5	1	4	4	16	3	33	57.58%
Arts and Media	10	9	10	5	8	3	45	24.44%
Business	11	4	5	5	28	9	62	59.68%
Liberal Arts and Sciences	30	33	34	18	66	30	211	45.50%
Education	2	10	4	10	11	13	50	48.00%
Engineering	3	0	6	4	24	4	41	68.29%
Public Affairs	0	0	3	3	7	2	15	60.00%
<b>Total CU-Denver</b>	<b>61</b>	<b>57</b>	<b>66</b>	<b>49</b>	<b>160</b>	<b>64</b>	<b>457</b>	<b>49.02%</b>

**DISTRIBUTION BY RANK**

	Professor		Associate Professor		Assistant Professor		Sr. Instructor & Instructor		Total
	Male	Female	Male	Female	Male	Female	Male	Female	
Architecture and Planning <sup>1</sup>	9	1	7	2	4	4	5	1	33
Arts and Media	2	1	6	2	10	5	10	9	45
Business	17	4	11	5	5	5	11	4	62
Liberal Arts and Sciences	34	11	34	20	32	17	30	33	211
Education	6	2	5	12	4	9	2	10	50
Engineering	15	2	9	2	6	4	3	0	41
Public Affairs	5	0	2	2	3	3	0	0	15
<b>Total CU-Denver</b>	<b>88</b>	<b>21</b>	<b>74</b>	<b>45</b>	<b>64</b>	<b>47</b>	<b>61</b>	<b>57</b>	<b>457</b>

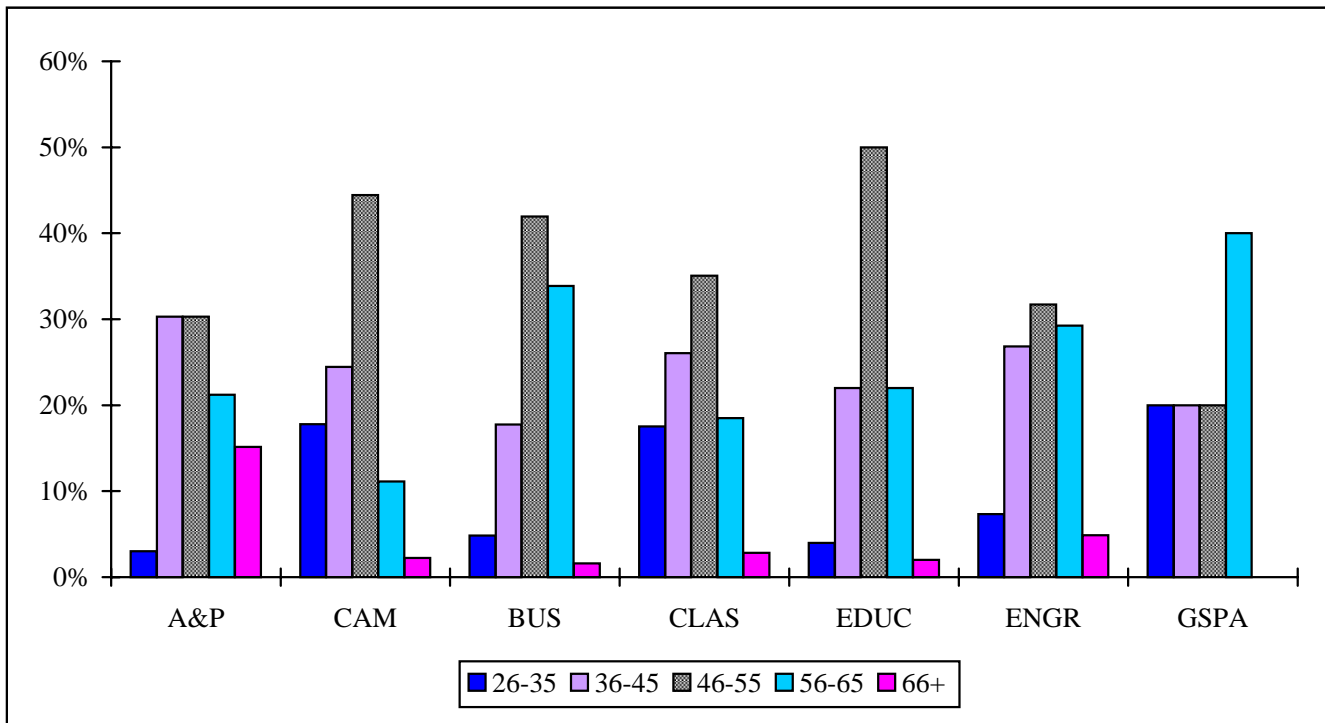
Notes:

1. Architecture and Planning does not include faculty for the undergraduate programs taught in Boulder.
2. Excludes Administrative Faculty.
3. Data as of October 1, 2002.

Source:

Faculty Data File  
Office of Institutional Research, Planning and Analysis

**FULL-TIME INSTRUCTIONAL FACULTY  
DISTRIBUTION BY AGE**



	<u>%</u> <b>26-35</b>	<u>%</u> <b>36-45</b>	<u>%</u> <b>46-55</b>	<u>%</u> <b>56-65</b>	<u>%</u> <b>66+</b>
Architecture and Planning <sup>1</sup>	3%	30%	30%	21%	15%
Arts & Media	18%	24%	44%	11%	2%
Business	5%	18%	42%	34%	2%
Liberal Arts and Sciences	18%	26%	35%	18%	3%
Education	4%	22%	50%	22%	2%
Engineering	7%	27%	32%	29%	5%
Public Affairs	20%	20%	20%	40%	0%
<b>Total CU-Denver</b>	<b>12%</b>	<b>24%</b>	<b>39%</b>	<b>22%</b>	<b>3%</b>

Notes:

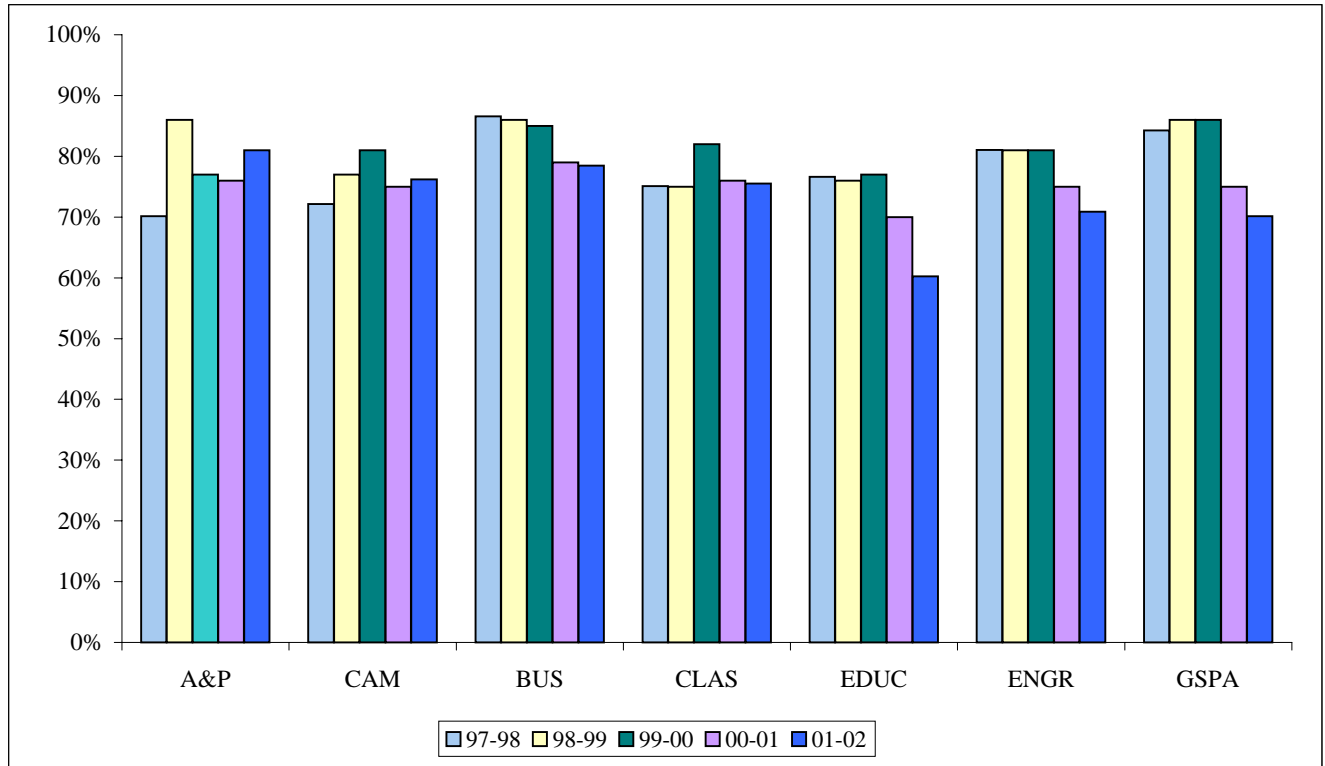
1. Architecture and Planning does not include faculty for the undergraduate programs taught in Boulder.
2. Excludes Administrative Faculty.
3. Data as of October 1, 2002.

Source:

Faculty Data File  
Office of Institutional Research, Planning and Analysis



**PERCENT FULL-TIME FACULTY  
1997-98 THROUGH 2001-02**



	<u>FY</u> <u>97-98</u>	<u>FY</u> <u>98-99</u>	<u>FY</u> <u>99-00</u>	<u>FY</u> <u>00-01</u>	<u>FY</u> <u>01-02</u>
Architecture and Planning <sup>1</sup>	70%	86%	77%	76%	81%
Arts and Media <sup>2</sup>	72%	77%	81%	75%	76%
Business	87%	86%	85%	79%	78%
Liberal Arts and Sciences	75%	75%	82%	76%	75%
Education	77%	76%	77%	70%	60%
Engineering	81%	81%	81%	75%	71%
Public Affairs	84%	86%	86%	75%	70%
<b>Total CU-Denver</b>	<b>78%</b>	<b>79%</b>	<b>82%</b>	<b>75%</b>	<b>73%</b>

Notes:

1. Architecture and Planning does not include faculty for the undergraduate programs taught in Boulder.
2. Arts, Fine Arts, Music and Theatre were transferred into Arts and Media FY 1997-98.

Source:

Prior to 00-01, Budget Office FTE Faculty Reports  
After 00-01, Institutional Research FY Clear All report

**FTE INSTRUCTIONAL FACULTY  
1997-98 THROUGH 2001-02**

	<u>FY 1997-98</u>	<u>FY 1998-99</u>	<u>FY 1999-00</u>	<u>FY 2000-01</u>	<u>FY 2001-02</u>
<b>Architecture and Planning<sup>1</sup></b>	30.12	24.89	27.73	37.65	36.09
<b>Arts and Media<sup>2</sup></b>	30.22	35.33	37.01	44.78	46.85
<b>Business</b>	81.06	79.48	77.85	75.02	73.63
<b>Liberal Arts and Sciences</b>	204.59	208.38	213.67	235.98	251.25
Anthropology	5.25	7.84	6.20	8.47	11.02
Biology	11.82	13.61	12.54	17.81	19.20
Chemistry	12.61	12.24	13.31	13.35	12.38
Communication	15.04	14.47	13.86	16.33	18.60
Economics	12.70	10.88	13.13	12.00	13.28
English	25.57	25.34	27.11	29.77	31.07
Environmental Sciences	0.39	0.32	0.33	2.59	3.26
Ethnic Studies	0.85	0.86	0.78	1.12	1.59
Modern Languages	2.54	2.36	3.97	2.79	2.40
French	4.29	3.15	5.10	4.00	4.17
Geography	5.28	6.28	5.10	5.01	5.27
Geology	4.03	4.77	4.93	4.43	3.79
German	2.46	2.69	2.23	2.30	2.33
Health and Behavioral Sciences	1.36	2.13	2.63	3.35	3.34
History	9.81	9.85	8.72	12.14	13.22
Humanities				2.97	1.66
Interdisciplinary	0.42	0.71	2.14	3.11	2.55
Mathematics	31.34	33.09	29.38	29.50	31.28
Philosophy	7.52	7.20	8.03	10.49	11.44
Physics	7.08	9.22	8.80	8.40	8.24
Political Science	12.21	10.54	9.84	12.72	12.56
Psychology	15.06	14.55	15.30	15.91	17.31
Sociology	6.97	6.38	5.96	8.21	9.08
Spanish	9.99	9.90	14.28	9.21	12.21
<b>Education</b>	65.64	65.41	66.44	71.88	81.85
<b>Engineering</b>	55.15	57.21	52.67	55.53	58.33
Civil Engineering	17.26	15.12	16.40	17.03	17.27
Computer Science	12.16	16.75	12.73	16.15	17.66
Electrical Engineering	13.04	12.52	12.02	11.16	11.53
Mechanical Engineering	12.69	12.82	11.52	11.19	11.87
<b>Public Affairs</b>	19.40	21.28	21.45	17.39	19.57
<b>Total CU-Denver</b>	<b>486.18</b>	<b>491.98</b>	<b>496.82</b>	<b>538.23</b>	<b>567.57</b>

Notes:

1. Architecture and Planning does not include faculty for the undergraduate programs taught in Boulder.
2. Arts, Fine Arts, Music and Theatre were transferred into Arts and Media FY 1997-98.

Source:

Prior to 00-01, Budget Office FTE Faculty Reports  
After 00-01, Institutional Research FY Clear All report

**STUDENT/FACULTY RATIOS  
BY SCHOOL/COLLEGE AND DEPARTMENT  
1997-98 THROUGH 2001-02**

	<u>FY 1997-98</u>	<u>FY 1998-99</u>	<u>FY 1999-00</u>	<u>FY 2000-01</u>	<u>FY 2001-02</u>
<b>Architecture and Planning<sup>1</sup></b>	10.51	13.13	12.78	9.09	9.35
<b>Arts and Media<sup>2</sup></b>	12.94	10.94	12.25	11.74	12.45
<b>Business</b>	17.17	18.68	18.37	19.49	20.75
<b>Liberal Arts and Sciences</b>	16.84	16.58	16.32	15.63	15.44
Anthropology	22.25	16.82	24.08	17.89	14.09
Biology	27.16	23.95	23.01	15.89	14.55
Chemistry	16.72	18.14	16.23	16.38	16.56
Communication	15.45	16.69	18.52	17.86	17.19
Economics	17.52	18.36	14.88	18.90	18.55
English	15.47	16.05	15.73	14.57	14.44
French	9.86	12.41	7.98	9.53	11.29
Geography	8.56	7.07	10.27	11.06	11.37
Geology	10.52	7.69	7.38	7.74	10.00
German	10.57	8.70	12.83	12.39	12.40
History	15.18	14.64	18.12	14.82	14.11
Mathematics	12.89	12.85	13.74	14.21	14.26
Philosophy	23.05	24.21	22.84	19.40	18.83
Physics	26.06	18.36	18.58	21.20	22.90
Political Science	13.24	14.46	14.58	13.00	15.29
Psychology	20.51	20.87	20.58	20.89	19.49
Sociology	21.58	26.22	30.34	22.25	21.45
Spanish	15.63	14.58	9.76	16.54	13.55
<b>Education</b>	11.38	11.66	10.90	10.07	9.78
<b>Engineering</b>	10.85	11.25	12.20	11.69	9.87
<b>Public Affairs</b>	8.47	7.54	7.10	9.81	9.18
<b>Total CU-Denver</b>	<b>14.52</b>	<b>14.69</b>	<b>14.60</b>	<b>14.07</b>	<b>13.91</b>

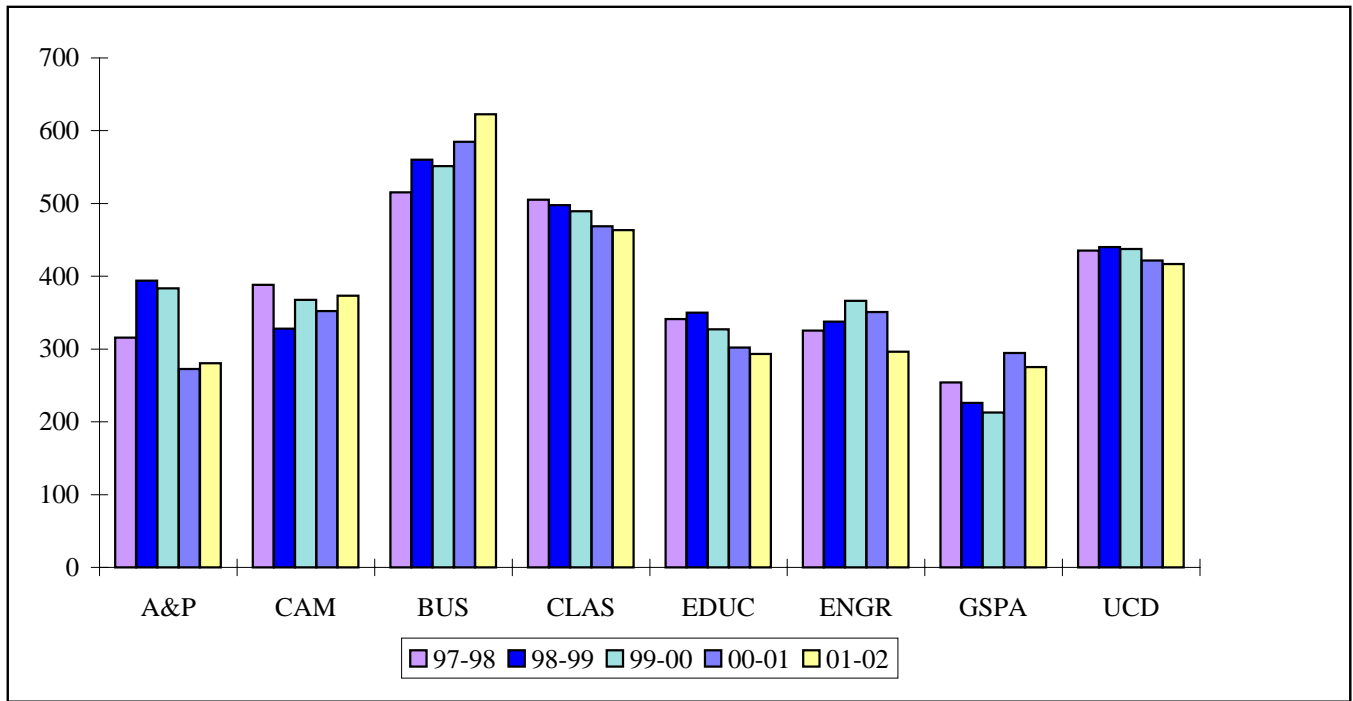
Notes:

1. Architecture and Planning does not include faculty for the undergraduate programs taught in Boulder.
2. Arts, Fine Arts, Music and Theatre were transferred into Arts and Media FY 1997-98.

Sources:

FTES (p. 22) divided by FTEF (p. 46);  
Office of Institutional Research, Planning and Analysis

**STUDENT CREDIT HOURS/FTE FACULTY BY SCHOOL/COLLEGE  
FY 1997-98 THROUGH FY 2001-02**



	<u>1997-98</u>	<u>1998-99</u>	<u>1999-00</u>	<u>2000-01</u>	<u>2001-02</u>
Architecture and Planning <sup>1</sup>	315.54	393.89	383.27	272.56	280.35
Arts and Media <sup>2</sup>	388.29	328.19	367.68	352.19	373.36
Business	515.22	560.37	551.18	584.64	622.49
Liberal Arts and Sciences	505.04	497.52	489.51	468.90	463.27
Education	341.31	349.81	327.00	302.10	293.40
Engineering	325.42	337.63	366.06	350.75	296.23
Public Affairs	254.13	226.16	212.82	294.48	275.42
<b>Total CU-Denver</b>	<b>435.25</b>	<b>440.30</b>	<b>437.40</b>	<b>421.49</b>	<b>416.73</b>

Note:

1. Architecture and Planning does not include faculty for the undergraduate programs taught in Boulder.
2. Arts, Fine Arts, Music and Theatre were transferred into Arts and Media FY 1997-98.

Sources:

Enrollment Reports - Office of Institutional Research, Planning and Analysis  
Budget Office year-end reports

## Financial Data

**FINANCIAL AID AWARDS  
2000-01 AND 2001-02**

<b>Program</b>	<b>No. of Recipients 2000-01</b>	<b>2000-01 Awards in \$</b>	<b>No. of Recipients 2001-02</b>	<b>2001-02 Awards in \$</b>
<b>FEDERAL GRANTS</b>				
CSIG	40	65,857	96	108,918
Pell	1,446	2,989,722	1,398	3,205,737
SEOG	190	260,109	226	363,608
BIA/Indian Fellowship	8	15,686	13	37,400
Sub-Total Federal Grant	1,684	3,331,374	1,733	3,715,663
<b>STATE GRANTS</b>				
Colorado Student Grant	779	1,034,484	686	1,112,364
Undergraduate Merit	453	507,395	456	689,118
Grad Need	324	647,329	324	923,623
Colorado Fellowship	90	179,913	105	189,560
Colorado Diversity	0	0	0	0
Governor's Opportunity Scholarship	44	271,621	59	380,700
Part-time Grant	0	0	0	0
Sub-Total State Grant	1,657	2,640,742	1,630	3,295,365
<b>INSTITUTIONAL AWARDS</b>				
Advantage Scholarship	161	278,379	140	312,223
Ahlin	7	15,320	9	52,019
Arnold	9	12,000	0	0
Chancellor's Scholarship	28	30,250	20	22,250
Chancellor's Scholars & Leaders	54	104,140	56	70,000
CU in the City Incentive Awards	75	66,404	43	39,860
Displaced Aurarians	5	8,505	6	17,445
Elway (formerly Coalition)	21	15,375	11	9,375
Employee - Spouse/Child Scholarship	37	18,968	50	29,098
Nelson/Running Wolf	13	20,000	18	20,000
Virginia T. Schuman Scholarship	34	28,562	88	125,294
Urban Scholarship	53	42,750	55	69,500
Sub-Total Institutional Awards	329	640,653	496	767,064
<b>LOANS</b>				
PLUS/SLS	51	308,761	54	345,898
Stafford (formerly GSL)	3919	24,658,823	4123	26,453,052
Perkins (formerly NDSL)	171	388,184	197	507,500
Sub-Total Loan	4217	25,355,768	4374	27,306,450
<b>WORK PROGRAMS</b>				
Federal Work-Study	203	571,891	218	713,630
Colorado Work-Study	185	465,743	263	433,736
Colorado No Need Work-Study	50	187,886	64	225,953
Work Total	438	1,225,520	545	1,373,319
<b>Grand Total</b>	<b>8,325</b>	<b>33,194,057</b>	<b>8,778</b>	<b>36,457,861</b>

Source:  
Office of Financial Aid

**REVENUE AND EXPENDITURES  
STATE APPROPRIATIONS  
FISCAL YEAR 2001-02**

**REVENUE**

Tuition and Fees	\$45,409,156
State Appropriations	\$32,474,518
Cash Funds	\$8,731,408
<b>TOTAL REVENUE</b>	<b>\$86,615,082</b>

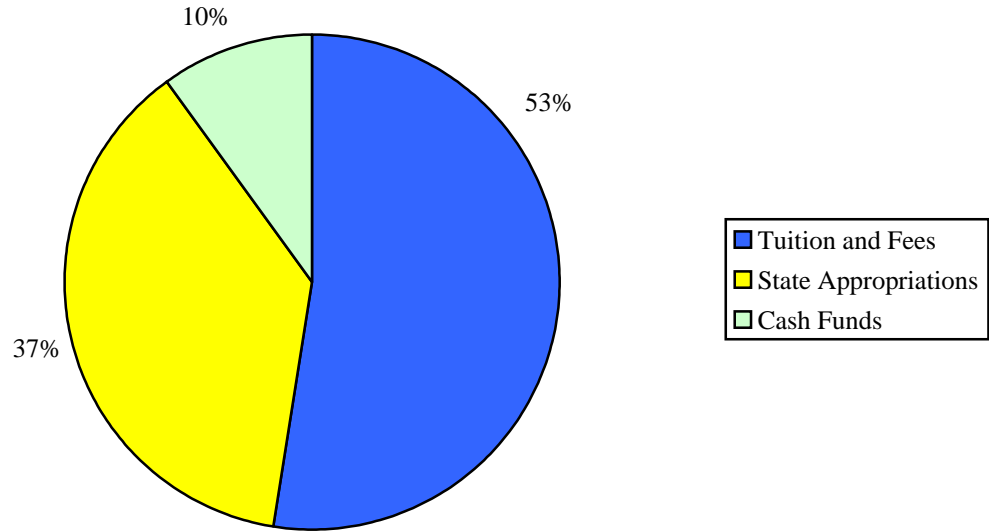
**EXPENDITURES**

Instruction	\$43,465,912
Research (State Supported)	\$1,105,353
Public Service	\$375,204
Academic Support	\$18,991,718
Student Services	\$5,047,149
Institutional Support	\$9,855,867
Operation and Maintenance of Plant	\$5,517,273
Scholarships and Fellowships	\$2,147,758
Others	\$15,691
<b>TOTAL EXPENDITURES</b>	<b>\$86,521,925</b>

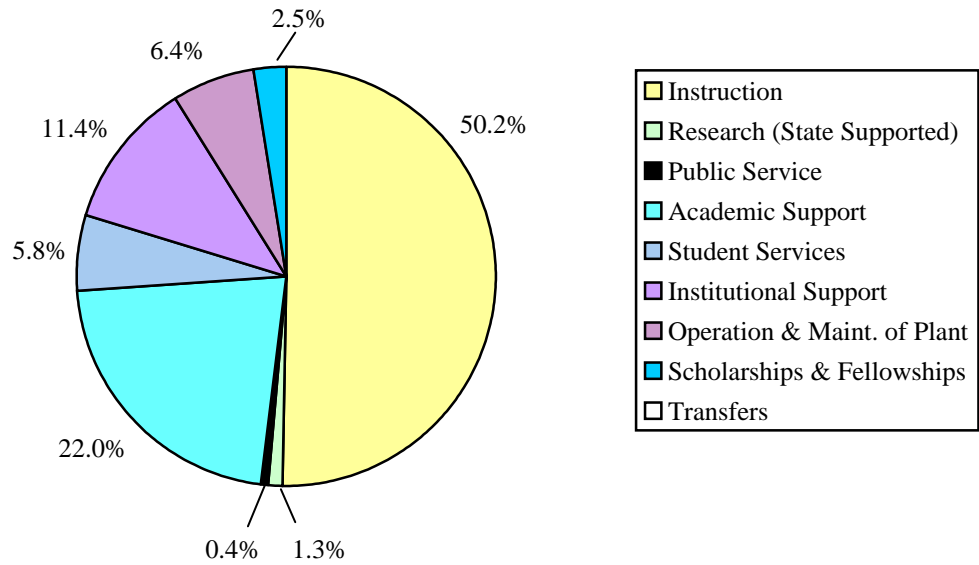
Source:

Request Budget for the Fiscal Year 2001-2002, University of Colorado at Denver

### REVENUE FY 2001-02



### EXPENDITURES FY 2001-02

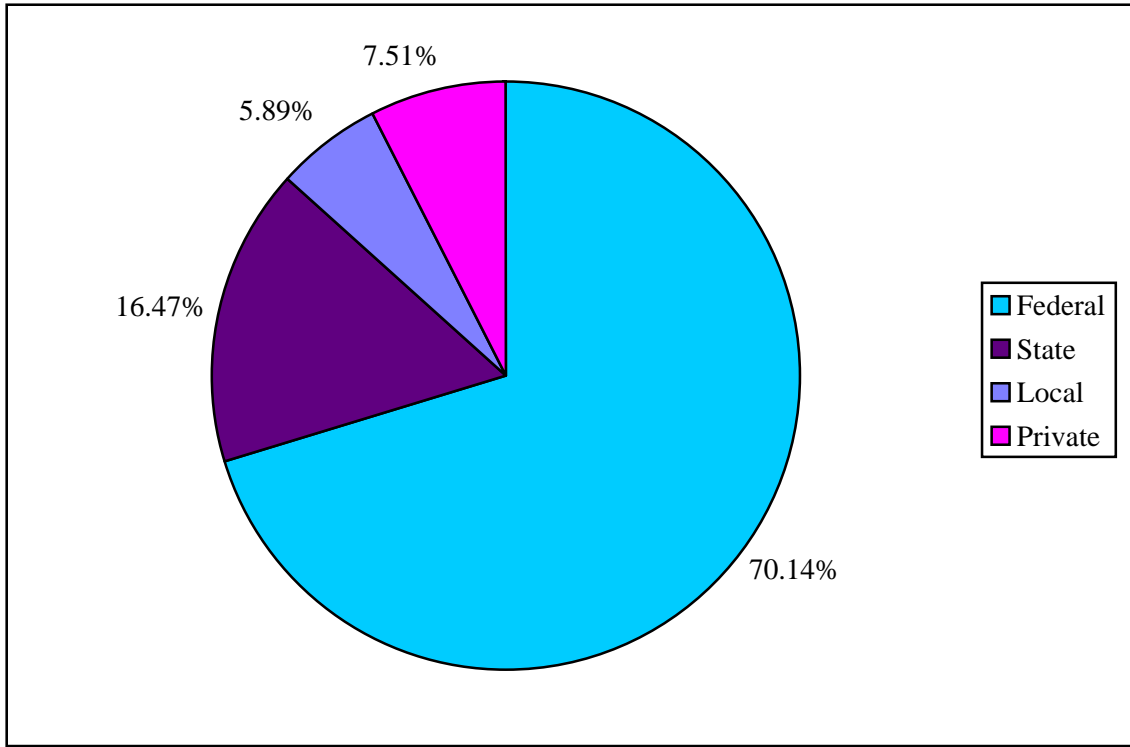


Source:

Request Budget for the Fiscal Year 2001-2002, University of Colorado at Denver



**CONTRACTS AND GRANTS BY FUNDING SOURCE  
FISCAL YEAR 2001-02**



Federal <sup>1</sup>	70.14%	\$14,249,661
State	16.47%	\$3,345,152
Local	5.89%	\$1,195,609
Private	7.51%	\$1,525,009
<b>TOTAL</b>		<b>\$20,315,431</b>

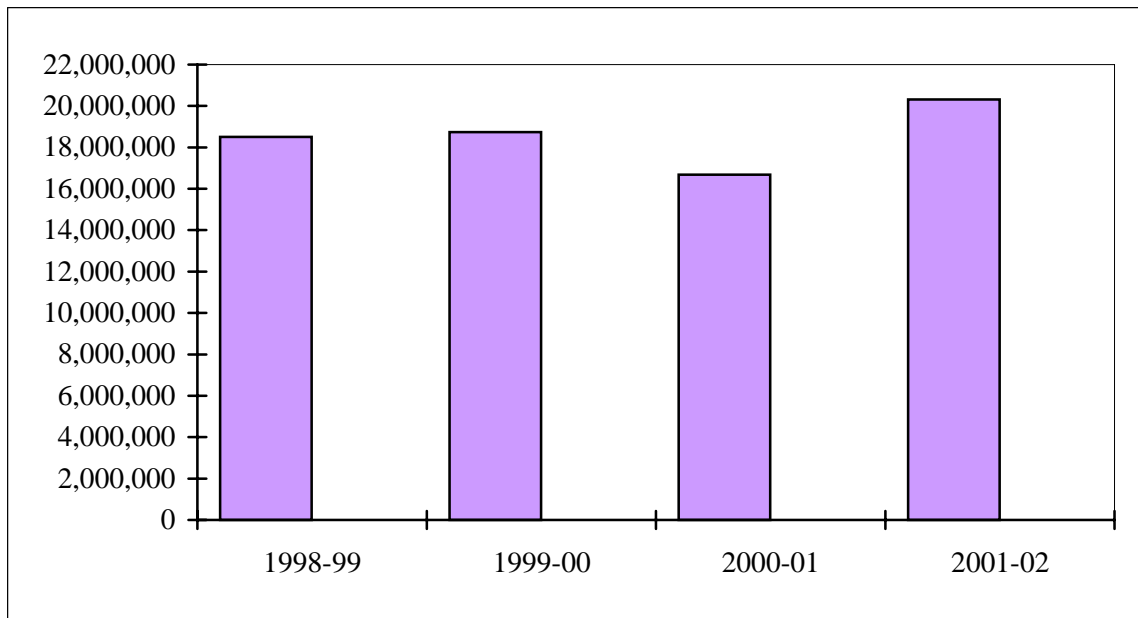
Note:

1. Federal figure includes multiple funding sources.

Source:

Office of Sponsored Programs FY 2002 Annual Report

**TOTAL CONTRACTS AND GRANTS AWARDED  
FISCAL YEARS 1998-99 THROUGH 2001-02**



<u>Fiscal Year</u>	<u>Total Awards</u>	<u>Percent Change from Previous Year</u>
1998-99	\$18,511,217	14.91%
1999-00	\$18,736,205	1.22%
2000-01	\$16,676,174	-10.99%
2001-02	\$20,315,431	21.82%

Source:

Office of Sponsored Programs FY 2002 Annual Report

**CONTRACT AND GRANT PROPOSALS  
SUBMITTED, AWARDS RECEIVED, INDIRECT COSTS COLLECTED  
JULY 1, 2001 TO JUNE 30, 2002**

<u>School/College or Department</u>	<u>Number of Proposals Submitted</u>	<u>Number of Awards Funded</u>	<u>Amount of Awards</u>	<u>Indirect Costs Collected</u>
Arts and Media	3	3	\$309,010	\$1,033
Architecture and Planning	7	7	\$184,611	\$24,241
Business	7	6	\$754,539	\$27,739
Education	26	34	\$6,114,229	\$559,108
Engineering	32	20	\$1,646,290	\$142,692
Liberal Arts and Sciences	64	51	\$3,214,339	\$451,843
Public Affairs	18	26	\$1,771,148	\$68,250
International Training, Education & Research Academy	10	7	\$3,577,410	\$784,496
Library	1	1	\$11,514	\$0
Office of Academic and Student Affairs	21	37	\$2,732,341	\$169,041
Office of Administration and Finance	0	0	\$0	\$0
<b>TOTALS</b>	<b>189</b>	<b>192</b>	<b>\$20,315,431</b>	<b>\$2,228,443</b>

Source: Office of Sponsored Programs FY 2002 Annual Report