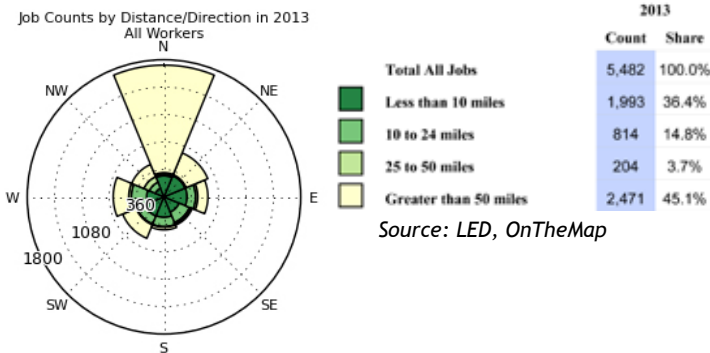


Local Employment Dynamics

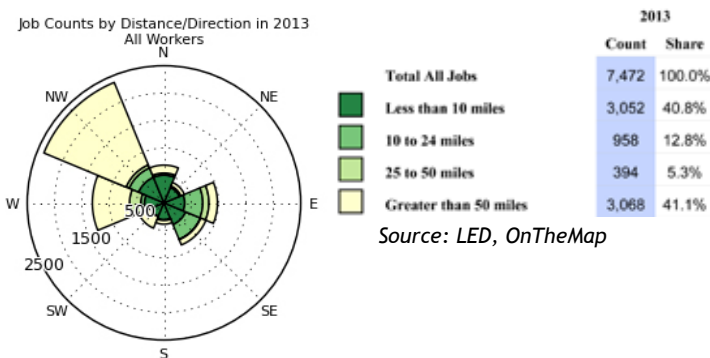
Las Animas Radar Chart



The majority of workers living in Las Animas and Otero counties live and work within their home counties.

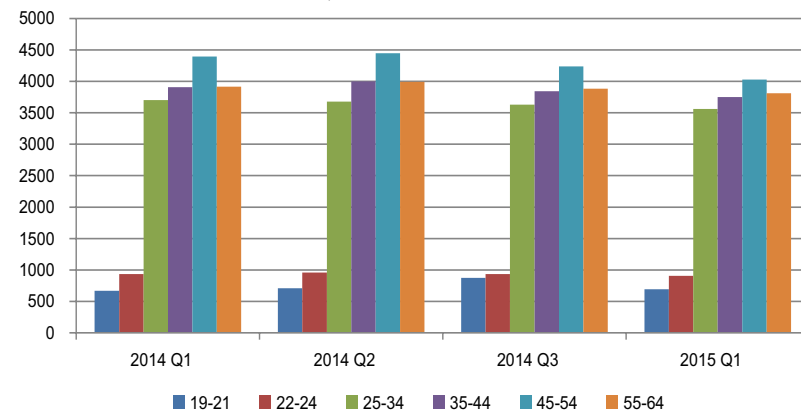
- In Las Animas County: 36.2% are employed in Trinidad
- In Otero County: 28% work in La Junta; 6.2% in Rocky Ford
- The primary destinations for workers leaving each county for employment are to Pueblo and Colorado Springs.

Otero Radar Chart



Quarterly Workforce Indicators (QWI) data provide a great deal of information on the characteristics of a region's workforce. For example, age distribution of the workforce. The graphic shows that the largest age group in the Southeast workforce area is the 45 - 54 year old category. In general, the age distribution is fairly well balanced, though not well represented in the younger age groups.

Southeast Labor Force, All Industries



Dee Funkhouser
 Colorado Department of Labor and Employment
 (303) 318-8865

Labor Market Information
www.colmigateway.com



Southeast Workforce Region Labor Market Information

Labor Market Information (LMI) in the Colorado Department of Labor and Employment collects and analyzes information about labor market trends throughout Colorado. Data are presented in a variety of ways: industry employment and wages, current and projected industry and occupation levels, occupational wages, and labor force employment and wages. LMI conducts various research projects and assists workforce centers and others with customized regional information requests.

Colorado was the 2nd fastest growing State between 2010 and 2015, with a population of 5,456,574. Colorado also outpaced the nation in employment growth by a wide margin.

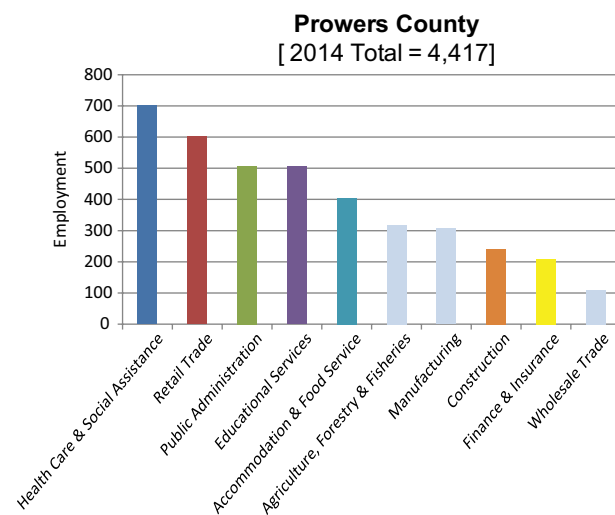
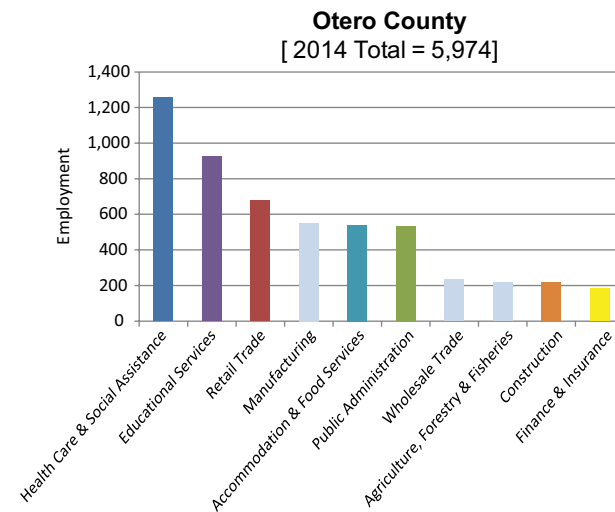
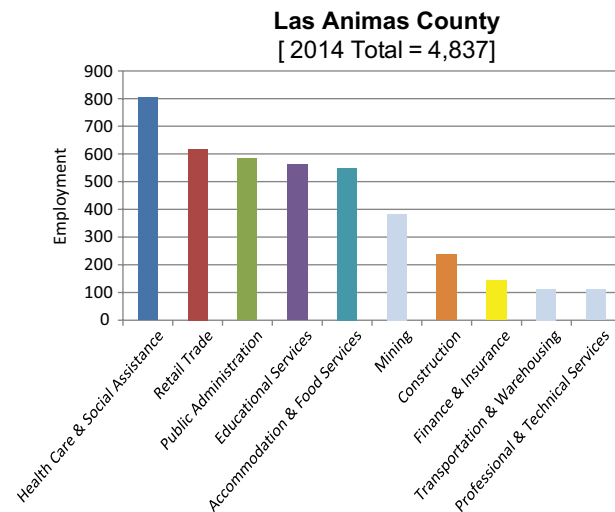
Area	2014 Population	2010-2014 Population Change	QCEW 2014 Employment	QCEW Employment Growth 2013-14	November 2015 unemployment Rate*
State of Colorado	5,355,866	6.5%	2,417,769	3.5%	3.5%
Baca	3,624	-3.8%	1,103	-0.1%	1.8%
Bent	5,539	-13.4%	1,158	2.1%	3.2%
Crowley	5,551	-8.0%	1,087	1.7%	4.3%
Huerfano	6,428	-3.7%	1,660	-3.0%	1.9%
Kiowa	1,385	-0.3%	419	-7.5%	7.1%
Las Animas	14,060	-9.4%	4,936	-2.0%	4.8%
Otero	18,380	-1.8%	5,903	-3.1%	4.9%
Prowers	11,985	-4.1%	4,371	-2.9%	3.8%

Source: Quarterly Census of Employment and Wages (QCEW) & Local Area Unemployment Statistics (LAUS); Colorado State Demography Office. * Unemployment Rate is Not Seasonally Adjusted.

The Southeast Workforce Sub-Region has faced strong headwinds in this decade, with a population decline of 5.7% since the 2010 Census. The largest drops occurred in Bent and Las Animas counties. Due to loss of several major employers along with a multi-year drought impacting agriculture, the employment base has reduced as well. In terms of annual job growth, all but two counties lost wage & salary jobs from 2013-2014. A bit of good news is that four of the region's counties had a small increase in jobs as of 2nd Quarter 2015. Not surprisingly, unemployment rates exceeded the statewide average in November 2015 in most of the region's counties. The unemployment rate for the Sub-Region as a whole was 4%.

Industries

Southeast Workforce Counties Top Ten Industry Sectors by Employment



The five remaining counties in the region have small wage & salary employment totals, so many industry sectors' data are confidential. Of the sectors for which data were reported, similar rankings are common.

- Top industry sectors
- Health Care & Social Assistance
 - Public Administration

Note the colors applied to several of the County industries. The same industry is often seen across all of the counties in this Region. Industries colored in light blue are not common to the top industries Region-wide.

Source: LMI - 2014 QCEW Annual Data.

Location Quotients

Measures the concentration of an industry's employment in a specified area versus the reference area of the State of Colorado as a whole. Data are from 2014.

Las Animas Mining, quarrying, oil & gas 7.67	Otero Agriculture, forestry, fishing & hunting 7.09	Prowers Agriculture, forestry, fishing & hunting 12.22
---	--	---

Source: LMI Gateway Location Quotient Calculator.

Local Economic Comparisons

Wages, Income and Cost of Living Comparison

Area	Average Weekly Wage	Per capita personal income	Cost of Living
State of Colorado	\$1,014	\$48,869	100.0
Baca	\$527	\$39,405	83.1
Bent	\$580	\$30,019	84.5
Crowley	\$706	\$23,574	84.4
Huerfano	\$561	\$34,598	87.5
Kiowa	\$628	\$52,221	82.4
Las Animas	\$731	\$37,365	88.1
Otero	\$622	\$33,091	85.6
Prowers	\$610	\$38,129	83.9

Sources

Average Weekly Wage: 2014 QCEW

Per capita Personal Income: U.S.

Department of Commerce, Bureau of Economic Analysis

Cost of Living: Colorado Legislative Council

Cost of Living Index.

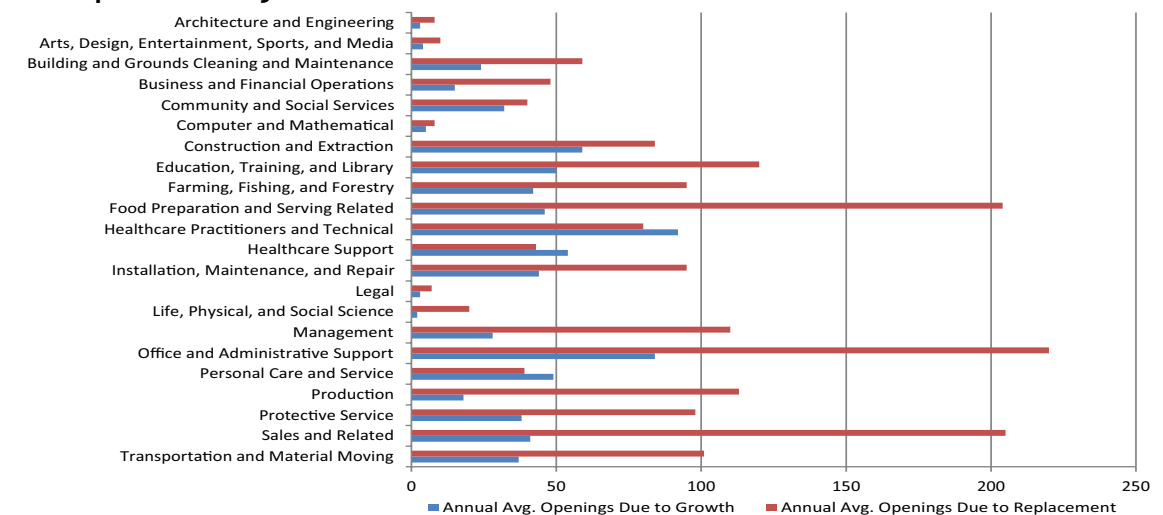
Southeast Occupations

Fastest Growing Occupation Groups and 2014 Wages - Eastern Colorado

Occupation Title	Employment	Average Hourly Wage	Average Annual Wage	Annual Percent Change 2014-2024
Healthcare Practitioners & Technical	3,480	\$31.01	\$64,501	2.18%
Healthcare Support	2,080	\$12.42	\$25,829	2.17%
Personal Care & Service	1,950	\$10.97	\$22,823	1.85%
Community & Social Services	1,690	\$18.59	\$38,657	1.69%
Construction & Extraction	3,930	\$18.76	\$39,025	1.25%
Farming, Fishing & Forestry	980	\$12.29	\$25,555	1.17%
Protective Service	3,020	\$18.97	\$39,466	1.14%
Computer & Mathematical	460	\$31.07	\$64,623	1.00%
Building & Grounds Maintenance	2,330	\$11.75	\$24,449	0.79%
Transportation & Material Moving	4,210	\$14.82	\$30,832	0.76%

Source: LMI - Occupational Employment Projections.

Occupational Projections: Thru 2024



Source: LMI - Occupational Employment Projections.