

## What is DriftWatch™?

DriftWatch™ is a voluntary registry tool that is intended to help pesticide applicators and specialty crop growers in Colorado communicate more effectively and to promote awareness and stewardship activities to help prevent and/or manage drift appropriately. DriftWatch™ is not intended to be a registry for homeowners or sites less than half an acre. Beekeepers that have 1 or more hives are eligible to use DriftWatch™.

This site features an easy-to-use Google Maps™ interface that clearly shows pesticide applicators the locations of registered areas so they can utilize the information in their ongoing stewardship activities before they spray. It's important to remember that the lines on the maps are not property lines; they merely indicate approximate positions of sensitive lands submitted to us from the agricultural producer.

DriftWatch™ was designed by staff from the Purdue University Agricultural and Biological Engineering and Agricultural Communications departments with input and support from Purdue University Cooperative Extension Specialists. It is now operated by FieldWatch, Inc, a non-profit company created by Purdue in collaboration with interested agricultural stakeholder groups. For more information, visit [www.fieldwatch.com](http://www.fieldwatch.com).

## Division of Plant Industry

The Division of Plant Industry (DPI) is committed to a better quality of life by serving the citizens of Colorado, improving the environment, providing consumer protection and assuring the integrity of agriculture and related industries through professionalism, communication and teamwork.

For additional information about the Driftwatch™ program and CDA's Pesticide Programs please contact John Scott, Pesticide Programs manager:

Colorado Department of Agriculture  
Division of Plant Industry  
305 Interlocken Parkway  
Broomfield, CO 80021  
303-869-9056  
Fax: 303-466-2860  
[johnw.scott@state.co.us](mailto:johnw.scott@state.co.us)  
[www.colorado.gov/ag/dpi](http://www.colorado.gov/ag/dpi)



**driftwatch™**

Pesticide Sensitive Crops and Habitats Registry



## How Does DriftWatch™ Work?

### What if I have specialty crops or apiaries?

Managers and owners of commercial specialty crop fields and apiaries may register their sites—DriftWatch™ is not intended for homeowners. However, beekeepers with a single hive are allowed.

### What are the steps to register?

First, go to <https://co.driftwatch.org>. You must create an account to participate in DriftWatch™. Click on the ‘Sign Up Free’ link in the upper right-hand corner to easily set-up your account.

### Login

You can use your email address as your user login name. If you have previously joined the producers list, just click on the ‘My DriftWatch’ button on the home page and log in.

### Step 1: Enter Crop

Select your crop from the drop-down menu. If your crop is not listed, select Other. Enter the crop year for this crop—the current year is the default year.

### Step 2: Add Comment or URL

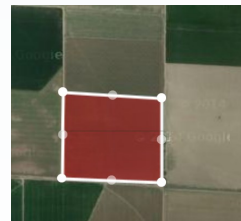
This is an optional field where you can enter your Website address or other comment.

### Step 3: Locate Field

Enter the address or ZIP code of the area you want to register, and then click on the ‘Search’ button. This will focus the map on the general vicinity of your field. To find your field, navigate the map north, south, east, and west by clicking the arrow buttons in the upper left corner of the map. You may also navigate by holding down your mouse button and dragging the map to the desired location. Zoom in and out using the + and - buttons in the upper left of the map.

### Step 4: Draw Your Field

Once you’ve located your field, you are ready to outline it. Click on any corner of your field to create a point. Outline your field boundaries by clicking along the edge of your field. Each click creates a point—like connect the dots. Each outline must contain at least four points. When you finish outlining your field, click on the ‘Submit Site’ button. If the outline is wrong, click on the ‘Clear’ button and retrace your site.

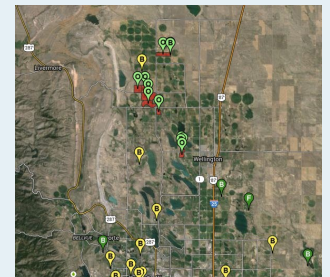


### Check Submissions

To check on the status of pending or past registration submissions, click on the ‘Check Submissions’ button. From this page you can edit attributes like crop type or notes or URL; and you can edit the shape if you want to. Please Note: Your DriftWatch™ registration and crops must be updated annually.

### What if I’m a Pesticide Applicator?

Pesticide applicators can easily locate registered sites before they spray using the Google Maps™ interface. Applicators can also register with DriftWatch™ to receive automated emails that tell them when a commercial specialty crop field or apiary site has been newly registered in the areas of the state that the applicator designates.



First, go to <https://co.driftwatch.org/> and click on the blue ‘Applicators’ button to Register for Notifications. Set up an account including your applicator license #; once you’ve filled out the required information, select your notification area & preference, click ‘Submit’ and you’re done!