

Animal feeds sold in Colorado for consumption by both livestock and pets are regulated by this program. The main goal of the program is to ensure that all animal feeds sold in Colorado are safe and properly labeled. Animal feed products are sampled by inspectors and are analyzed by the Division of Inspection and Consumer Services (ICS) laboratory to verify that they contain the guaranteed nutrients.

Q: How are animals and people protected by the Colorado Feed Law?

A: Our office is responsible for ensuring that animal feeds sold in Colorado are safe and properly labeled. When buying an animal feed, the consumer should be able to tell what it is for and where it comes from, and should be confident that it will be nutritious and will not harm the animal. Regulation of feeds, particularly medicated feeds, for food-producing animals is important when considering human food safety.

Q: How is the Colorado Commercial Feed Law enforced?

A: Companies selling feeds in Colorado must register with our office and, upon request, send labels in for review and approval. Inspectors visit businesses where feeds are sold, review labels for compliance with the law and collect feed samples. Samples are analyzed in our laboratory for the nutrients and medications guaranteed, and for unsafe levels of toxins. Feeds found to be unsafe or non-compliant will be taken off sale. In some cases, civil penalties may apply to violations.

Q: Who enforces the Colorado Commercial Feed Law?

A: There two regulatory specialists and one assistant in the office. Inspectors do field work for the feed program.

Q: Who is responsible for an animal feed?

A: A company name and address must be listed on the labels of all feed products sold in Colorado. This company is the responsible party.

Q: What's in pet food?

A: All feeds sold in Colorado must have an ingredient list on the label, with the ingredients listed in order by weight. The terms used must be common or usual descriptions, or official names of the feed ingredients.

Q: What assurances are there that the food I buy for my pet has all the nutrients my pet needs?

A: If it is a cat or dog food that is intended to be a sole ration (not a treat), there must be a nutritional adequacy statement on the label. The food must be shown to give your cat or dog all the nutrition he or she needs for the particular life stage.

Q: Do medicated feeds receive special attention?

A: Inspectors from our office conduct inspections of medicated feed mills to ensure that Good Manufacturing Practices (GMP's) are used in the production of medicated feeds. These inspections are done in cooperation with the Federal Food and Drug Administration (FDA).

Division Mission

The Division of Inspection & Consumer Services (ICS) is committed to promoting consumer protection, an honest, equitable marketplace and to encouraging integrity in Agriculture and Industry.

For More Information:

Colo. Dept. of Agriculture/Feed Program
2331 W 31st. Ave
Denver, CO 80211
Phone: (303) 867-9208
Fax: (303) 480-9236
E-mail: feed@ag.state.co.us

Rev. 1-11



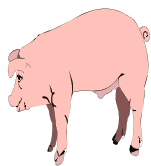
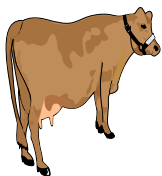
How to Read Pet Food Labels and Q & A on the Colorado Feed Law





**Division of
Inspection &
Consumer Services**

www.colorado.gov/ag/ics

DO YOU KNOW HOW TO READ YOUR LIVESTOCK FEED OR PET FOOD LABELS?



BRAND NAME	Y BRAND FEED
PRODUCT NAME	Big Pig No. 20 Medicated
PURPOSE STATEMENT & MEDICATED CLAIM	 <p>A complete medicated starter feed for pigs weighing 11 to 44 pounds For increased rate of gain and improved feed efficiency. Active drug ingredient</p>
DRUG GUARANTEE	Carbadox.....0.002% (20 grams / ton)
GUARANTEED ANALYSIS	<p>Guaranteed Analysis</p> <p>Crude Protein, minimum.....20.0% Lysine, minimum.....1.2% Crude Fat, minimum.....4.0% Crude Fiber, maximum.....4.0% Calcium, minimum.....0.8% Calcium, maximum.....1.3% Phosphorus, minimum.....0.65% Salt, minimum.....0.35% Salt, maximum.....0.85% Selenium, minimum.....0.1 ppm Zinc, minimum.....150 ppm</p>
INGREDIENT STATEMENT	<p>Ingredient Statement</p> <p>Grain Products, Plant Protein Products, Processed Grain By-Products, Dried Whey, Calcium Lignin Sulfonate, Animal Fat, Vitamin A Supplement, D-Activated Animal Sterol (source of Vitamin D3), L-Lysine, Riboflavin Supplement, Choline Chloride, Biotin, Thiamine Mononitrate, Pyridoxine Hydrochloride, Vitamin E Supplement, Menadione Sodium Bisulfite Complex (source of Vitamin K Activity), Folic Acid, Ethoxyquin (a preservative), Ground Limestone, Dicalcium Phosphate, Salt, Copper Sulfate, Manganous Oxide, Zinc Oxide, Ferrous Sulfate, Cobalt Carbonate, Calcium Iodate, Sodium Selenite.</p>
USE DIRECTIONS	<p>FEEDING DIRECTIONS: Feed as the complete ration to pigs weighing 11 to 44 pounds. WARNING: Do not feed to swine within 42 days of slaughter. CAUTION: Not for use in pregnant swine or swine intended for breeding purposes</p>
PRECAUTIONARY STATEMENT (IF REQUIRED)	
RESPONSIBLE PARTY'S NAME & ADDRESS	Y BRAND FEEDS City, State, Zip
QUANTITY STATEMENT	NET WT 50 LB (22.67 kg)

BRAND NAME	BRAND X CHUNKS												
PURPOSE STATEMENT	 <p>Adult Dog Food</p>												
GUARANTEED ANALYSIS	<p>Guaranteed Analysis</p> <p>Crude Protein (Min).....21.0% Crude Fat (Min).....8.0% Crude Fiber (Max).....4.0% Moisture (Max).....14.0%</p>												
INGREDIENT STATEMENT	<p>Ingredients Statement</p> <p>INGREDIENTS: Ground yellow corn, ground wheat, soybean meal, corn gluten meal, beef tallow preserved with BHA and mixed-tocopherols (source of vitamin E), beef and bone meal, water, sugar, sorbitol, dicalcium phosphate, phosphoric acid, dried whey, salt, calcium carbonate, L-lysine monohydrochloride, animal digest, sorbic acid (a preservative), calcium propionate (a preservative), potassium chloride, choline chloride, added color (Yellow 5, Red 40, Yellow 6, Blue 2), DL-methionine, zinc oxide, vitamin supplements (E, A, B-12, D-3), glyceryl monostearate, ferrous sulfate, niacin, manganese sulfate, calcium pantothenate, riboflavin supplement, biotin, thiamine mononitrate, garlic oil, copper sulfate, pyridoxine hydrochloride, folic acid, menadione sodium bisulfite complex (source of vitamin K activity), calcium iodate.</p>												
FEEDING DIRECTIONS	<p>Recommended Daily Feeding For Adult Dogs For an average dog with normal activity, the following amounts of product fed once daily are recommended:</p> <table border="1"> <thead> <tr> <th>SIZE OF DOG</th> <th>AMOUNT TO FEED</th> </tr> </thead> <tbody> <tr> <td>Extra Large (over 100 lbs.)</td> <td>5-1/2 cups plus 1/3 cup for each 10 lbs. of body weight over 100 lbs.</td> </tr> <tr> <td>Large (51 to 100 lbs.)</td> <td>3-1/4 to 5-1/2 cups</td> </tr> <tr> <td>Medium (21 to 50 lbs.)</td> <td>1-2/3 to 3-1/4 cups</td> </tr> <tr> <td>Small (13 to 20 lbs.)</td> <td>1 to 1-2/3 cups</td> </tr> <tr> <td>Toy (3 to 12 lbs.)</td> <td>1/3 to 1 cup</td> </tr> </tbody> </table>	SIZE OF DOG	AMOUNT TO FEED	Extra Large (over 100 lbs.)	5-1/2 cups plus 1/3 cup for each 10 lbs. of body weight over 100 lbs.	Large (51 to 100 lbs.)	3-1/4 to 5-1/2 cups	Medium (21 to 50 lbs.)	1-2/3 to 3-1/4 cups	Small (13 to 20 lbs.)	1 to 1-2/3 cups	Toy (3 to 12 lbs.)	1/3 to 1 cup
SIZE OF DOG	AMOUNT TO FEED												
Extra Large (over 100 lbs.)	5-1/2 cups plus 1/3 cup for each 10 lbs. of body weight over 100 lbs.												
Large (51 to 100 lbs.)	3-1/4 to 5-1/2 cups												
Medium (21 to 50 lbs.)	1-2/3 to 3-1/4 cups												
Small (13 to 20 lbs.)	1 to 1-2/3 cups												
Toy (3 to 12 lbs.)	1/3 to 1 cup												
STATEMENT OF NUTRITIONAL ADEQUACY	Animal feeding tests using Association of American Feed Control Officials (AAFCO) procedures substantiate that Brand X Chunks provides complete and balanced nutrition for all life stages.												
RESPONSIBLE PARTY'S NAME AND ADDRESS	Brand XYZ, Inc. City, State Zip												
QUANTITY STATEMENT	NET WT 50 LB (22.67 kg)												

