



OFFICE OF STATE PLANNING AND BUDGETING

A Fact Sheet

Todd Saliman
Director, OSPB

Luis M. Garcia
Budget Analyst

Colorado Department of Labor and Employment

November 2007

The Colorado Department of Labor and Employment provides services to the citizens of Colorado through employment and training programs, workers' compensation, labor market information, and oil and public safety programs.

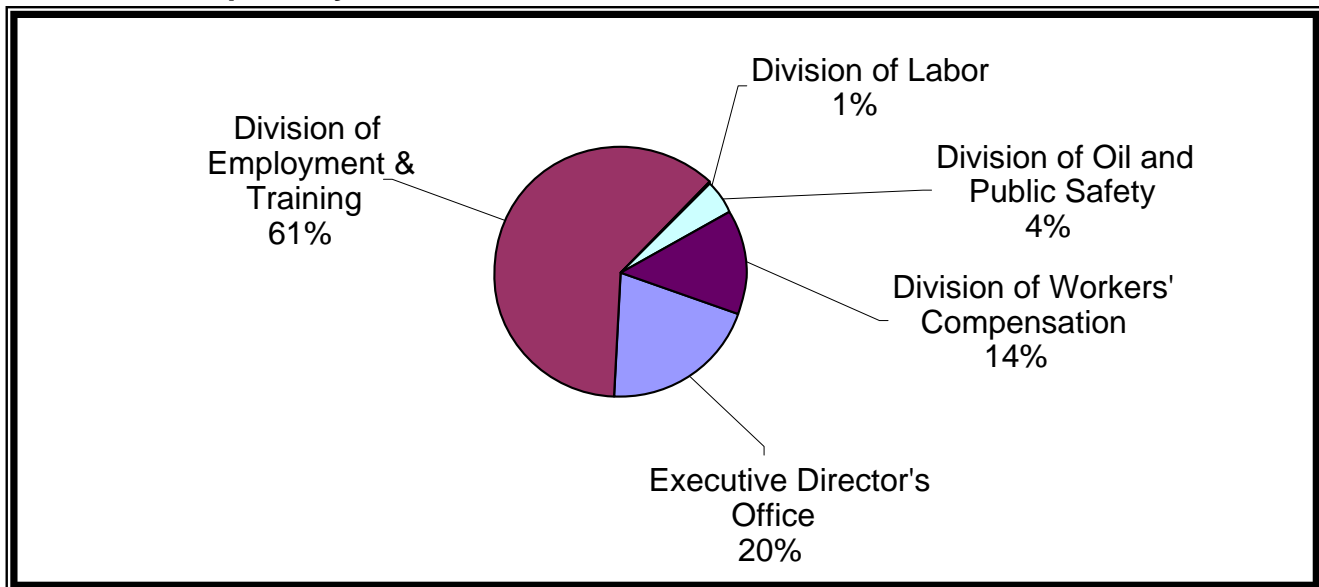
FY 2007-08 Appropriation

Total Appropriation:	\$158,205,173
Percent of Statewide Total Appropriation:	0.9%
General Fund Appropriation:	\$0
Percent of Statewide General Fund Appropriation:	0.0%
Total Full Time Equivalent Employees (FTE):	1,097.0

FY 2008-09 Budget Request

Total Request:	\$160,267,798
Percent of Statewide Total Request:	0.9%
General Fund Request:	\$0
Percent of Statewide General Fund Request:	0.0%
Total Full Time Equivalent Employees (FTE):	1,085.1

FY 2008-09 Request By Area



Department in Summary FY 2008-09

- The FY 2008-09 total appropriations is \$160.2 million. This is an increase of \$2.0 million over the previous year.
- Workers' Compensation Subsequent Injury fund decreased approximately \$2.0 million over the previous year.
- The Department projects the number of Initial Unemployment Insurance Claims to be 120,074 in FY 2008-09. This is an increase of 513 over the previous year.
- The Department projects the total amount of incorrect Workers' Compensation payments detected and corrected to be \$2,250,000 in FY 2008-09. This is an increase of \$216,467 over FY 2006-07.
- The Department projects inspecting 29,000 boilers in FY 2008-09. This is an increase of 4,088 over FY 2006-07 due to Denver ceasing the Boiler Inspection Section. A supplemental request was made for FY 2006-07 to cover increased workload.
- The Department projects reviewing 375 Public School Projects and plans in FY 2008-09. This is a projected increase of 25 (6.7%) over FY 2007-08. The Department also requested an emergency supplemental for FY 2007-08 to address eliminating the backlog of school plan checks and inspections.

Leading Budget Change Requests for FY 2008-09:

- The *Workforce Center Service Restoration* request is for \$4.5 million to offset decreased Wagner-Peyser and Workforce Investment Act federal funds and restore service levels at One Stop workforce centers throughout the nine workforce regions.
- The *Disaster Recovery Plan* request is for \$484,144 to purchase hardware, software, and contractor services for the development of the business continuity and disaster recovery capabilities. During the development of the Continuity of Operations Plan (COOP), the unemployment insurance claims processing was identified as an essential function of state government making this request all the more important.
- The Cooperative Fuel Research (CFR) Engines request for \$440,000 is for the replacement of two engines which test the octane levels at dispensing stations. This request is in response to the increased maintenance costs associated with the old engines.

Key Issues and Legislation:

1. S.B. 07-123 – Created a program for registration, inspection, and licensing of elevators, escalators, and similar conveyances and associated fees. Created the Conveyance Safety Fund in which the revenue from such fees is to be deposited.
2. S.B. 07-258 – Pertained to changes to the Colorado's workers' compensation laws. An appropriation was made to cover increased costs for administrative law judge services.

3. S.B. 07-1228 – Created a requirement for policies that govern the placement of above-ground and underground storage tanks containing renewable fuels.

Department Wide Performance Measures:

1. Ensure that 90% of UI payments processed are accurate and timely.
2. Entered Employment Rate (Percent of Workforce clients working in the quarter after receiving services.)
3. Percentage of claims successfully resolved.
4. Minimize the incidences that cause injuries, as identified through violations noted during field inspections: Percent of violations noted during field inspections.
5. Total amount of incorrect payments detected and corrected.

Links to Additional Websites

- [Colorado Department of Labor and Employment](http://www.coworkforce.com) (*www.coworkforce.com*)
- [Colorado Unemployment Insurance Benefits](http://www.coworkforce.com/UIB) (*www.coworkforce.com/UIB*)
- [Colorado Division of Workers Compensation](http://www.coworkforce.com/dwc) (*www.coworkforce.com/dwc*)
- [Colorado Division of Employment and Training](http://www.coworkforce.com/emp) (*www.coworkforce.com/emp*)
- [Colorado Division of Oil and Public Safety](http://oil.cdle.state.co.us) (*oil.cdle.state.co.us*)
- [U.S. Department of Labor, Bureau of Labor Statistics](http://www.bls.gov) (*www.bls.gov*)
- [FedStats](http://www.fedstats.gov) (*www.fedstats.gov*)
- [Colorado Labor Market Information](http://www.coworkforce.com/lmi/ali/lfpag.asp) (*http://www.coworkforce.com/lmi/ali/lfpag.asp*)

For more information about this Department and its programs, please call 303-318-8000.