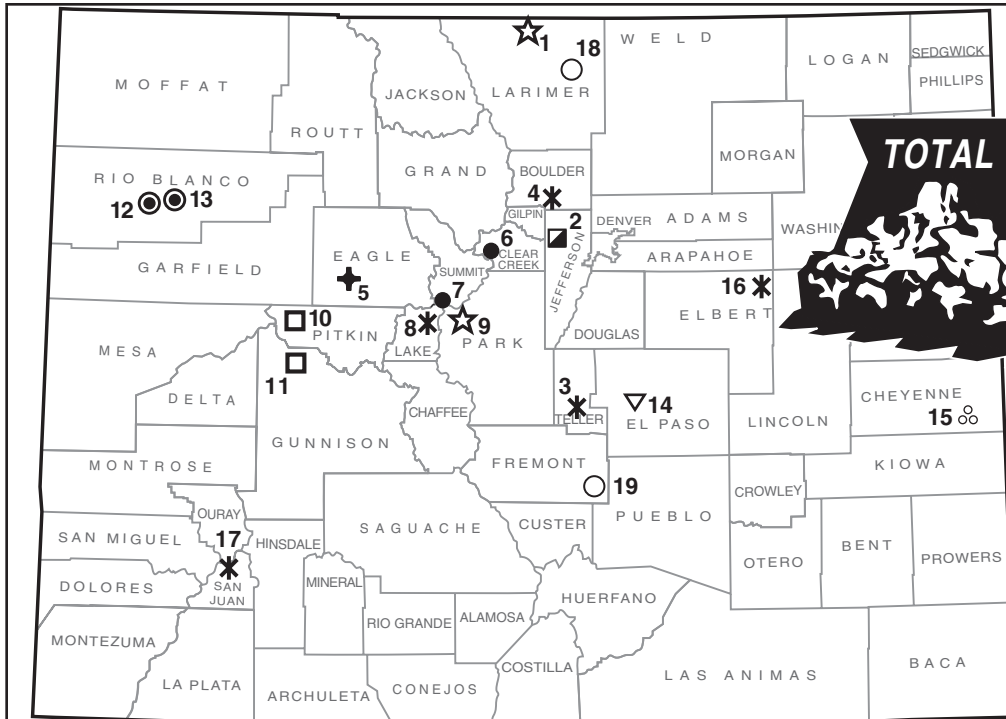


2000 COLORADO MINERAL FACTS

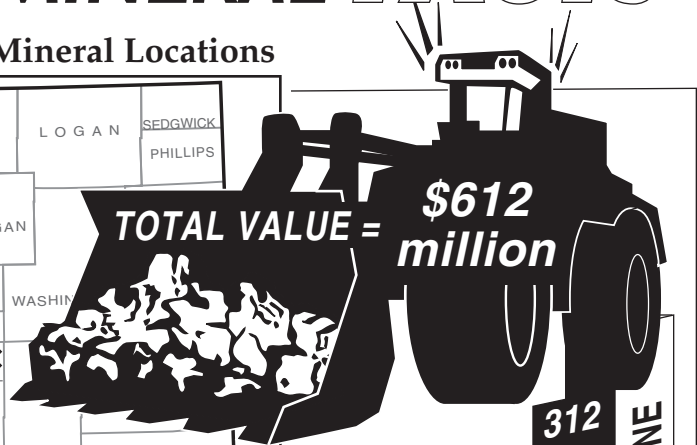
Selected Metallic, Industrial, Gem & Specimen Mineral Locations



- * Precious/Base metals □ Uranium □ Marble-Alabaster + Gypsum ● Sodium minerals
- Molybdenum ☆ Gemstone ▽ Silica sand ∞ Helium ○ Limestone/cement

Map No.	Site Name	Commodity	Type	Owner/Operator
1	Kelsey Lake	Diamonds	OP	Great Western Diamond Co.
2	Schwartzwalder	Uranium	UG	Cotter Corp.
3	Cresson	Gold, silver	OP	Cripple Creek and Victor J. V..
4	Cross	Gold, silver	EX	Calais Resources, Inc.
5	Eagle Gypsum	Gypsum	OP	Centex Constnuction Products, Inc.
6	Henderson	Molybdenum	UG	Phelps Dodge Corp.
7	Climax	Molybdenum	UG, OP	Phelps Dodge Corp.
8	Hopemore	Gold, silver	EX	Leadville Mining and Milling Corp.
9	Sweet Home	Rhodochrosite (gem)	UG	Sweet Home Rhodo, Inc.
10	Avalanche Creek	Alabaster, marble	UG	Avalanche Creek Marble Co.
11	Yule Quarry	Marble	UG	Sierra Minerals Corp.
12	White River	Sodium bicarbonate	SOL	White River Nahcolite Co.
13	American Soda	Soda ash	SOL	American Soda Co.
14	Colorado Silica Sand	Silica sand	OP	Colorado Silica Sand, Inc.
15	Ladder Creek Helium Plant	Helium	P	Union Pacific Fuels, Inc.
16	Titanium Ridge	Titanium	EX	Radar Acquisitions Corp.
17	Pride of the West Mill	Gold, silver, lead, zinc	P	Steve Fearn
18	La Porte	Limestone/cement	OP/P	Holnam, Inc.
19	Portland	Limestone/cement	OP/P	Holnam, Inc.

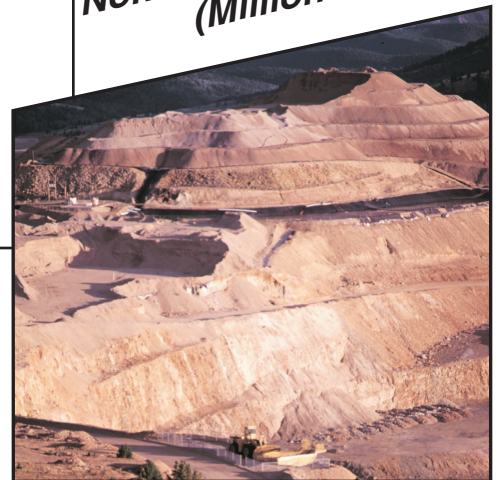
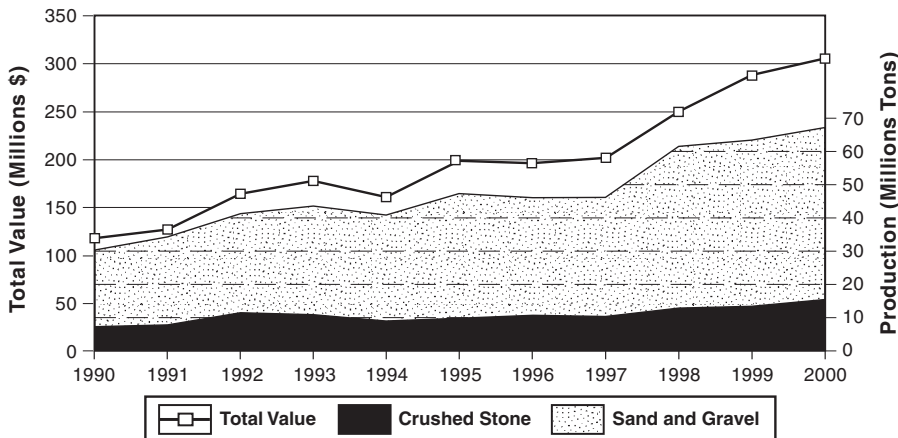
Abbreviations: TYPE: UG—underground; OP—open pit; SOL—solution; P—Processing Plant; EX—Exploration



* Clay, industrial minerals, dimension stone, gemstones, helium

Non-Fuel Mineral Value (Millions \$)

2000 Colorado Construction Material Production



Cresson open pit gold mine, Teller County

Colorado Geological Survey

1313 Sherman St., Rm. 715
Denver, CO 80203

Ph: (303) 866-2611 FAX: (303) 866-2461

Website: <http://geosurvey.state.co.us>