

STATE OF COLORADO
HABITAT PARTNERSHIP PROGRAM

SOUTH PARK HABITAT MANAGEMENT PLAN

2011 - 2020



Approved, Colorado Wildlife Commission, January 5, 2011
This plan is valid for 10 years from approval date.

TABLE OF CONTENTS

Executive Summary	
Introduction	
Program Area Description	
Goals, Objectives, Strategies	
Big Game Information	
Big Game Conflicts	
Budget	
Project Locations	
Project Types & Priorities	
Past Accomplishments	
Project Highlights	
Appendices	
1	Land Ownership
2	State Wildlife Areas
3	Vegetation
4	Elk Distribution
5	Elk Conflict Areas
6	Elk Habitat Enhancement Areas
7	Pronghorn Antelope Distribution
8	Pronghorn Antelope Conflict Areas
9	Mule Deer Distribution
10	Mule Deer Conflict Areas
11	USFS Water Developments
12	2010 Livestock Operator Survey Comments Summary

South Park Habitat Partnership Program Committee

Erik Brekke, BLM, Chairman, September 1992

Randy Tingle, Sportsman, November 1992

Mark Lamb, Colorado Division of Wildlife, May 1996

John Woodward, Livestock Grower, May 2003

Steve Allard, Livestock Grower, September 2006

Sheila Lamb, U.S. Forest Service, September 2007

Webb Smith, Livestock Grower, January 2010

**South Park Habitat Management Plan
Executive Summary
2011-2020**

The South Park Habitat Partnership Program Committee (SPHPPC) was established in September 1992 to address conflicts between big game wildlife populations and livestock operators. Its vision is to establish short-term management goals and strategies to resolve immediate fence and forage conflicts caused by big game and to identify long-term management strategies that will resolve conflicts and establish healthy and sustainable rangelands and wildlife populations within the South Park Habitat Partnership Program Area.

The SPHPPC has completed a wide variety of habitat improvement projects and implemented several programs designed to address wildlife conflicts brought to its attention. These projects have included distribution management hunts, hazing activities, mechanical habitat manipulations, prescribed fire treatments, water developments, invasive species herbicide treatments, landowner fencing repair materials distributions, and a monitoring and research project focusing on South Park's ever increasing fringe sage infestation. More recently the Committee has approved fertilizer and wildlife friendly fence design projects.

In order to maximize the impact and benefits attained by these projects, The South Park HPP Committee has received funding and/or assistance from the Rocky Mountain Elk Foundation, the Mule Deer Foundation, US Forest Service, Bureau of Land Management, Trout Unlimited, Great Outdoors Colorado, Trust for Public Lands, Colorado Open Lands, local County Agencies, the Colorado Department of Corrections and numerous private landowners, livestock growers and agricultural producers.

The Committee envisions challenges during the next ten years to include continued residential subdivisions, hunting access limitations, gaining adequate elk harvest to achieve the population objective and the ongoing water issues within South Park.

INTRODUCTION

The South Park Habitat Partnership Program Committee was established in September 1992 to address conflicts between wildlife populations and livestock operators. Its vision is to establish short-term management goals and strategies to resolve immediate fence and forage conflicts caused by big game and to identify long-term management strategies that will resolve conflicts and establish healthy and sustainable rangelands and wildlife populations within the South Park Habitat Partnership Program Area.

Habitat loss is occurring in the South Park HPP area just as it is in most other places within Colorado. Reasons for this include population increases, development from both permanent and seasonal residents, successional changes in vegetation and, particularly in South Park, an increasing abundance of fringe sage.

So as to be responsive to current concerns, a landowner survey was distributed to past SPHPP participating landowners, members of the Central Colorado Cattleman's Association and additional ranchers that were known outside SPHPP and CCCA circles. A total of 65 surveys were distributed; 25 surveys were returned. A summary of the responses have been included in the Appendix.

SPHPP Program Area

The South Park program area includes Game Management Units 46, 461, 49 (east half), 50, 500, and 501 in Park, Clear Creek, and Jefferson Counties, in central Colorado. Ownership of the 1,197 square miles in the program area is 35% private, 55% U.S. Forest Service, 5% Bureau of Land Management, 5% State of Colorado. The area ranges from 5,500 feet elevation at the South Platte River in the northeast corner to 14,286 feet at Mount Lincoln in the northwest corner. See Appendix Map 1.

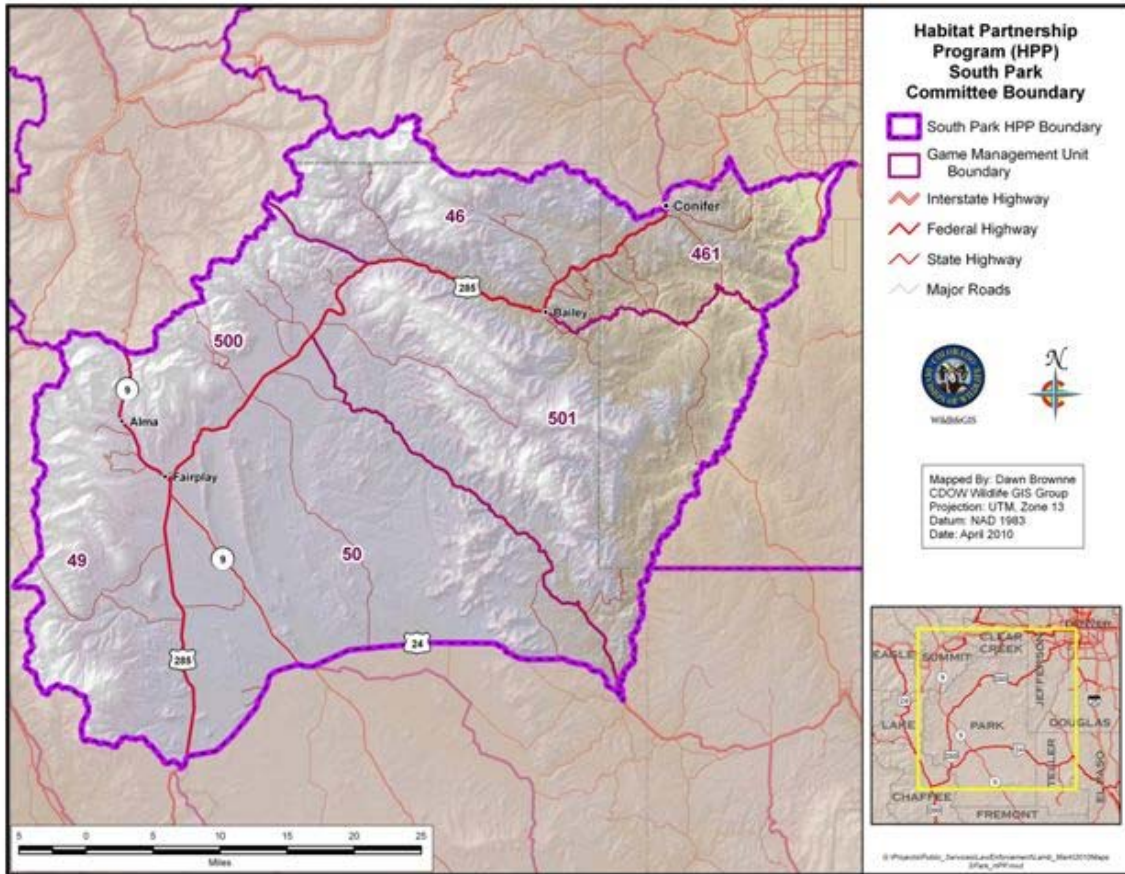
The program area includes the towns of Alma, Bailey, Como, Conifer, Fairplay, Grant, Hartsel, Jefferson, Lake George and Shawnee. Around and between these towns are large expanses of rural residential developments with lot sizes ranging in density from .5 to 40 acres.

The South Park Habitat Partnership Program Area includes numerous public access properties. Numerous habitat improvement projects have taken place on State Wildlife Areas to encourage big game usage, to enhance public hunting opportunities and reduce big game conflicts. See Appendix Map 2.

The area's most dominant geographic feature is South Park, an 800 square mile mountain park, 465 square miles of which is within the program area. The park is open, mostly treeless, valley bottom ranging from 8,000 to 10,000 feet elevation with low, intermittent ridges occasionally supporting ponderosa pine, Douglas fir and aspen forest stands. Many historical ranching and haying operations in the park have gradually converted to recreational residential developments and dryland pasture as water rights have been sold to downstream municipalities.

South Park is ringed with heavily forested mountain ranges, most of which reach above timberline. East of South Park, the program area extends to the South Platte River canyon which includes a large area of ponderosa pine and Douglas fir forests. In 1999 Game Management Units 46 and 461, north and east of Kenosha Pass were added to the

program area and the west side of GMU 49 was moved to the Arkansas River HPP committee's area. The west side of the program area extends to Buffalo Peaks and the top of the Mosquito mountain range. Appendix Map 3 shows a breakdown of vegetation in the program area.



SPHPP COMMITTEE GOALS & OBJECTIVES and STRATEGIES

The Committee's goals for the South Park HPP program area include:

- 1) Reduce conflicts resulting from elk, deer, antelope or moose to forage and fences where impacts currently occur or where impacts develop in the future.
- 2) Improve big game distribution and harvest to help minimize conflicts with local agricultural producers.
- 3) Continue communications between the Division of Wildlife, ranchers, sportsmen, the general public and land management agencies including an information and education program to increase awareness of the HPP program.
- 4) Modify population objectives through the DAU plans, when necessary, to reflect habitat availability, wildlife conflicts and public desires.
- 5) Continue to evaluate "best practices" so that the Committee can adopt new approaches to the resolution of conflicts as necessary and continue to improve the quality of rangelands for the benefit of all stakeholders.

Goal #1: Reduce conflicts resulting from elk, deer, antelope or moose damage to forage and fences where impacts currently occur or where impacts develop in the future.

Objectives: Implement habitat enhancement and grazing management projects to attract and hold big game in acceptable areas.

Develop partnerships with entities dealing with wildlife habitat issues.

Focus on long-term protection of critical wildlife habitat.

Strategies:

- 1) HABITAT IMPROVEMENT - Designed to improve habitat and attract big game away from conflict areas.
 - A) Specific areas will be managed to increase their attractiveness to winter elk concentrations and thus draw those animals away from areas where they are causing problems.
 - B) Projects on federal, state or private lands will be considered as needed. Public lands will be given first priority. Projects on private and state trust lands will be considered if the property is open to hunting and a cooperative agreement is signed protecting the benefits of any habitat improvement activities.
 - C) Grazing management (including rotational grazing), fertilization and vegetative manipulation, such as burning, roller chopping, hydro-axing, interseeding, timber harvesting and noxious weed control will be conducted in appropriate areas if the combination of distribution hunts and management of specific winter ranges is not adequate to reduce conflicts to an acceptable level.
 - D) Water development projects will be identified and implemented to assist with animal distribution.
 - E) Road closures and other restrictions of recreational activity will be considered and recommendations, with needed time periods, made to the appropriate land management agencies for areas where those activities move animals out of desired habitats and into areas with conflicts. The committee will provide to the agencies a prioritized list of recommended seasonal closures annually, in time for project work plan development.
 - F) The DOW will provide maps of elk habitat and use patterns to the Committee and appropriate land use agencies as updates are recorded.
 - G) The Habitat Evaluation will be completed and updated to provide the best available data.

- 2) FENCING - Designed to reduce conflicts in areas with high impacts from wildlife movements, to share in the construction costs of replacement fences that are wildlife compatible and to assist with costs associated with repair of wildlife caused damage to existing fences.
 - A) The committee will make available information on alternative fence designs that reduce wildlife impacts or are more resistant to those impacts.
 - B) The committee may provide materials for replacement fences that are wildlife compatible.
 - C) Qualified ranchers with big game-caused damages to existing fences will be provided repair materials annually in an amount determined by the committee, when they document those losses. The committee will consider fence repair damage requests over that amount on a case-by-case basis.
- 3) CONSERVATION EASEMENTS - The committee will assist with private landowner expenses resulting from establishment of conservation easements on properties providing habitat values near conflict areas. This action is to insure alternative habitats remain in areas with land use changes that could exacerbate conflicts and concentrate animals.

Goal #2: Improve big game distribution and harvest to help minimize conflicts with local agricultural producers.

Objectives: Continue to manage for quality big game populations in the area.

Develop a mechanism for moving big game herds when needed to force them onto acceptable areas or to improve harvest.

Respond in a timely manner to remove big game from conflict areas.

Strategies:

- 1) REMOVAL FROM CONFLICT AREAS - Hazing - Upon contact from a livestock operator with a conflict, a timely attempt will be made to move big game from the conflict area.
- 2) DISTRIBUTION MANAGEMENT HUNTS - Designed to move and disperse big game concentrations creating demonstrable impacts.
 - A) When damages are shown to be occurring, the committee will pursue distribution management hunts (DMH) and will use a hunt coordinator when the committee and landowners determine the use of a coordinator will ensure the most effective response to move big game from conflict areas.
 - B) The number of distribution management hunt licenses will be limited to 10% of the big game animals in the conflict area.

- C) DMH's may not be available to any landowner who does not make a reasonable attempt to cooperate with the committee in addressing big game conflicts such as allowing hunting during the regular big game seasons.
- E) The committee will work with the Division of Wildlife to establish private land only antlerless elk licenses when normal hunting season licenses are not adequately addressing existing conflicts.
- F) Antlerless youth licenses will be utilized as much as possible. Landowners should be encouraged to take advantage of unfilled youth antlerless licenses from the regular rifle seasons, during the established late seasons.
- 4) ACCESS - In areas where harvest is inadequate to meet population goals because of restricted hunter access, the committee will promote and assist the Division of Wildlife in developing access through leases, easements, assistance with land exchanges, or other appropriate methods.

Goal #3: Develop communications between the Division of Wildlife, ranchers sportsmen, the general public and land management agencies to increase awareness of the HPP program and about wildlife issues in general.

Objectives: Inform agricultural producers, affected community and land managers about the Habitat Partnership Program Committee's activities, accomplishments and encourage them to submit projects.

Strategies:

- 1) POPULATION DATA - The DOW will provide annually any population estimates, permits numbers and harvest data to the committee.
- 2) FENCING INFORMATION - Designed to reduce conflicts in areas with high impacts from wildlife movements, to share in the construction costs of replacement fences that are wildlife compatible and to assist with costs associated with repair of wildlife caused damages to existing fences.
 - a) The committee will make available information on alternative fence designs that reduce wildlife impacts or are more resistant to those impacts.
 - b) The committee may provide materials for replacement fences that are wildlife compatible in areas with high wildlife impacts to existing fences.
 - c) Ranchers with fence damage caused by big game will be provided repair materials at a level determined by the committee.
- 3) SEMINARS - If more intensive educational efforts are needed, the committee will set up or assist with seminars for local residents to help them reduce conflicts with wildlife on fence or forage. The committee has also assisted with range management/forage monitoring workshops and will continue to do so as opportunities arise. As needed, open houses will be held to inform the public of committee activities.

- 4) ANNUAL REPORT - The Committee will produce an annual report that reviews HPP activities and accomplishments, provides license numbers and harvest results and surveys for additional conflict areas.
- 5) PUBLIC NOTICE - The Committee will post public notices in the local newspaper (Fairplay Flume) relating to all public meetings and workshops.
- 6) COMMUNICATION WITH LOCAL GOVERNMENTS - The committee will discuss program goals and projects as well as areas of cooperation that may exist. For instance, enforcement of road closures to reduce disturbance of wintering elk, cattleguards, fencing and signage along highway ROW's, etc.

Goal #4: Modify population objectives through DAU plans, when necessary, to reflect habitat availability, wildlife conflicts and public desire.

Objectives: Provide conflict data to the Division of Wildlife and work with the Division in developing long term population objectives as DAU plans are written.

Attempt to develop and implement a monitoring protocol to analyze the effectiveness of projects.

Strategies:

- 1) MONITORING - The committee will monitor the use of the areas managed to attract and hold animals causing conflicts during the winter. Additionally, it will use the number of complaints received from landowners as an index of success of the program. Harvest data will be compiled for all distribution hunt participants and will be provided to the regional and Denver offices by March 1st annually. In specific conflict areas or areas with habitat improvement projects it may be necessary to conduct supplemental aerial or ground counts to quantify the conflicts and/or measure the effectiveness of habitat management actions.
- 2) DAU COMMENTS - The DOW will present all DAU plans in the SPHPP area to the committee. The committee will review the plans and proposed objectives and will provide written comments to the DOW.

GOAL #5: Continue to evaluate “best practices” so that the Committee can adopt new approaches to the resolution of conflicts and continue to improve the quality of rangelands for the benefit of all stakeholders.

Objectives: To increase knowledge of state of the art techniques, new experimental or pilot projects that may be successful in South Park.

Strategies:

- 1) RESEARCH - The Committee will continue to explore new techniques to help accomplish its goals. The committee will entertain project requests for proposals that are experimental in nature.

- 2) PROJECT MONITORING - The Committee will work with applicants on appropriate monitoring technique(s) for the project that will provide information as to the success or failure of the project and the reasons why.
- 3) DIALOGUE - The Committee will continue to interact with agencies and individuals to keep up on current items.

BIG GAME INFORMATION

Big game populations and densities vary widely within the program area. The deer herd remains fairly stable at a low density with the population lower than historic high levels. The pronghorn antelope population is more erratic depending on winter conditions and harvest, but is currently 25% less than historic highs in the late 1960s. Not unlike the rest of the state, the elk herd is currently high but has been slowly declining from highs of the mid to late 1990s. Additionally, the elk herd has also tended to gather into larger groups during the winter in the last ten years. When groups reach 1,000 - 1,200 they are very noticeable; impacts to forage and fences can be significantly increased. Moose are now established within the program area through natural expansion from North Park. The population is estimated to be 30 - 40.

The program area includes the following Data Analysis Units (DAU) which are considered to be separate herds: Kenosha Pass elk herd (DAU E-18, GMU 50, 500 and 501); the eastern 267 square miles of GMU 49 of the Buffalo Peaks elk herd (DAU E-22, GMU 49, 57 and 58) and 354 square miles in GMU 46 and 461 within the Mt. Evans elk herd (DAU E-39, GMU 39, 46, 391 and 461). The South Park deer herd (DAU D-38, GMU 50, 500 and 501), the eastern 267 square miles of GMU 49 in the Cripple Creek deer herd (DAU D-16, GMU 49, 57, 58, 59, 581 and 591); and 354 square miles of GMU 46 and 461 in the Bailey deer herd (DAU D-17, GMU 39, 46, 51, 391 and 461) are also covered by the program area. The pronghorn in the program area are in game management units 49, 50, 500 and 501 which are part of the South Park pronghorn herd (DAU A-30, GMU 49, 50, 57, 58, 500, 501, 511 and 581). Currently there is no DAU established for moose.

The committee has reviewed the existing DAU plans and agrees that elk numbers need to be reduced in some areas. Private Land Only (PLO) licenses have been started for most of the SPHPP conflict areas. The SPHPP Committee will continue to monitor conflicts caused by the elk herds and recommend appropriate changes to the DOW and through the DAU planning process.

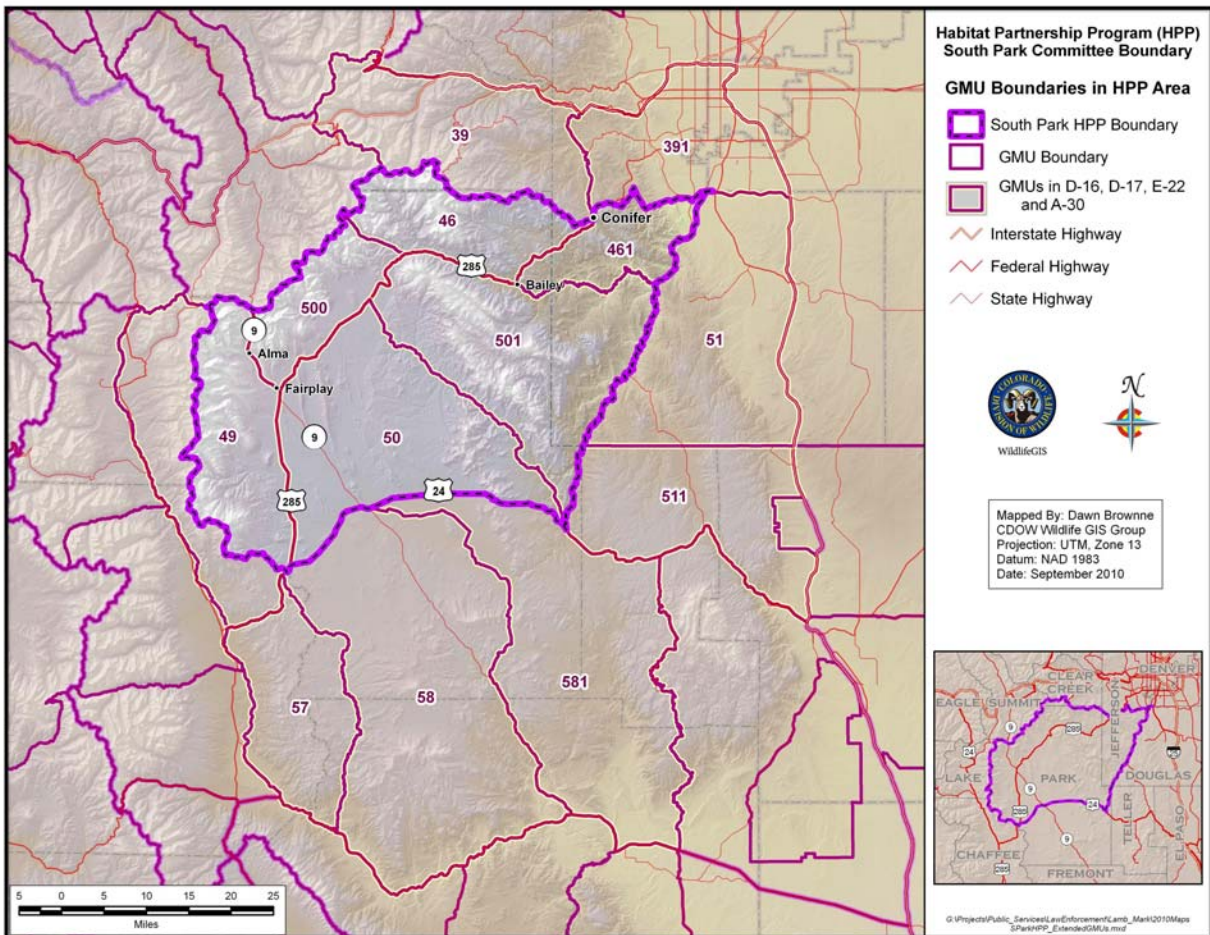
There are no serious conflicts at this time with the deer and pronghorn antelope populations. In fact, some concern has been expressed about the reduced deer population.

Table 1. Data Analysis Unit (DAU) Management Plan Summary

	AREA (Sq. Mi.)					POPULATION ESTIMATE				
	HPP	Total	Pub	Pvt	No Hntg	1994	1999	2004	2009	Objective Range
ELK										
E-18	1,176	1,176	68%	32%	500	1,960	1,530	1,820	2,600	1,800-2,200
E-22	267	1,682	73%	27%	100	4,200	3,150	3,350	3,360^	3,150-3,500
E-39	354	1,003	50%	50%	500	3,186	2,500	4,000	2,400^	2,500
DEER										
D-16	267	2,370	73%	27%	50	16,000	9,760	15,450	16,730^	16,000-20,000
D-17	354	1,505	50%	50%	100	6,210	6,750	8,010	7,680^	7,500 -8,300
D-38	1,176	1,176	68%	32%	---	2,480	2,330	2,280	2,910	2,450
PRONGHORN										
A-30	479	3,894	40%	60%	100	940	758	860	1,090	1,000-1,100

E-18 includes GMUs 50, 500 and 501; all of which are in this HPP program area.
 E-22 includes GMUs 49, 57 and 58; the east half of GMU 49 is in this program area.
 E-39 includes GMUs 39, 46 and 461; GMUs 46 and 461 are in this program area.
 D-16 includes GMUs 49, 57, 58, 581, 59 and 591; the east half of GMU 49 is in this program area.
 D-17 includes GMUs 39, 46, 51, 391 and 461; GMUs 46 and 461 are in this program area.
 D-38 includes GMUs 50, 500 and 501; all of which are in this program area.
 A-30 includes GMUs 49, 50, 57, 58, 500, 501, 511 and 581; GMUs 50, 500 501 and the east half of 49 are in this program area.

^ The 2009 population estimates are for the entire DAU not just the GMUs covered by HPP.



BIG GAME CONFLICTS

Complicating the successful resolution of conflicts with elk is the existence of numerous properties where hunting is not allowed. Population control efforts are thus limited and habitat improvement is precluded. Historically, elk harvest has been below desired levels because the elk have learned to take advantage of the interspersion of these refuge areas, including numerous residential subdivisions, recreational open space properties and other large ranches which are closed to hunting. Another complicating factor is the immigration of elk into South Park from GMU's outside the SPHPP Program Area after the regular big game seasons are over. These elk are included in the current winter population estimate although many of them are not available for harvest in the program area during the regular big game seasons.

Conflicts from antelope are relatively rare because there is no winter wheat within this program area, however, historically in some winters the antelope from GMU's 49, 50, 57, 58 and 581 used to migrate to Shaws Park, west of Canon City, and concentrate in a small area owned by three landowners. Damage control hunts, authorized by the Wildlife Commission in 1987 to remove up to 25% of the antelope present in the conflict area, were held annually to reduce the number of antelope as well as disperse the problem animals. During the last ten winters, however, antelope have not concentrated in Shaws Park and thus the hunts have not been necessary.

In the last 40 years, very large areas of deer and elk habitat, especially historic winter ranges, have been converted from agricultural use to seasonal and year-round residential use. The committee has not attempted to address the conflicts between deer and urban landscaping and gardens that have expanded as development has encroached on deer habitat throughout the program area. This type of conflict is the primary type currently indicated for deer and is outside the guidelines for the habitat partnership program to resolve fence and forage conflicts.

SOUTH PARK HPP BUDGET

The South Park HPP Committee has developed a budget allocation in line with our vision. This allows for short-term strategies to deal with immediate fence and forage conflicts caused by big game, while allowing us to concentrate on adaptive, long-term management strategies leading to the establishment of healthy and sustainable rangelands.

2011-2020 BUDGET ALLOCATION

Habitat Manipulation	55%
Fencing Program	20%
Game Damage	5%
Information & Education	5%
Conservation Easements/NEPA	5%
Monitoring/Research	5%
Administration	5%
Total	100%

The base-operating budget for the State HPP program is based on 5% of total annual revenues for big game license sales in the HPP areas. The Statewide HPP Council allocates funding to the individual HPP committees. The South Park HPP budget was developed to best meet the goals and objectives outlined earlier in the plan, while maintaining the flexibility to deal with emergencies and take advantage of opportunities.

It is important to acknowledge that the budget allocation is based on past projects, future projects that are likely to be proposed, as well as committee emphasis in funding certain project types. While these are desired and/or likely allocations, the committee retains the ability to shift funds as needed between categories as projects and opportunities arise or as situations dictate.

The Committee welcomes project proposals from landowners and cooperating agencies, giving priorities to projects that involve partnerships, leverage additional cooperator monies, integrate into other projects that are ongoing or a continuation of past HPP projects.

The Committee requires that private landownership projects consist of a minimum of 160 acres in livestock or agricultural production and that the landowner allow a reasonable amount of hunting. The Committee also requires that the project be presented before the Committee with a detailed cost breakdown. Projects must also be supported by the local CDOW District Wildlife Manager.

SOUTH PARK HABITAT PARTNERSHIP PROGRAM PROJECT ACCOMPLISHMENTS

Location	Year	Project Type
Reinecker Ridge SWA*	1993	Grazing Management Plan and Pasture Fence
Reinecker Ridge SWA*	1994	Controlled Burn, Spring Development and Protection
Rishaberger Mountain	1997	Controlled Burn 800 acres
Teter SWA	1997	Grazing Management Plan and Improvements
China Wall	1998	Controlled Burn 1220 acres
Guernsey Gulch	1998	Controlled Burn 1000 acres
Martland Basin	1998	Controlled Burn 2000 acres
Dunlap/Ratcliff Gulch	1999	Controlled Burn 1000 acres
Heat Well Tank Improvements	1999	Installation of heat wells under stock tanks
Teter SWA	1999	Controlled Burn
Upper Rock Creek	1999	Controlled Burn 1500
Off Channel Watering Projects	2000	Diversion of stream water for livestock watering
Tomahawk SWA	2000	Controlled Burn
Lawson Aeration	2002	Range Management Plan, 160 acres
Bathtub Spring	2004	Spring Development and Protection
Land EKG	2004	Range Management Class & Monitoring Kits
Tomahawk SWA	2004	Grazing Management Plan and Fence Construction
Wild Game Spring	2004	Spring Development and Protection
Tomahawk SWA	2005	Education and Vegetation Rehabilitation
South Park Legacy Area	2005-06	Conservation Easement
Fringed Sage Renovation	2005-07	CSU Herbicide Test Treatment
Distribution Management Hunts	2006-10	Elk Herd Population Control & Hazing
USFS Spring Developments	2006-10	Materials for 58 Spring Water Developments
JMJ SWA / Reinecker Ridge	2008	Controlled Burn, 272 acres
JV Rock Creek Hill	2008	Lay-down Fence
Deer Valley Meadow	2009	Willow Removal and Re-seeding
JMJ SWA / Reinecker Ridge	2009	Controlled Burn, 166 acres
JMJ SWA / Reinecker Ridge	2009	Spring Re-Development on 3 Springs
High Creek Drainage	2010	Solarized Well Pump Upgrade
High Visibility Wire Supply	2010	White vinyl coated wire fence supplies
JMJ SWA / Reinecker Ridge	2010	Controlled Burn and Fire Lines
Platt River Ranch Habitat Improvement	2010	Fertilizer Project, 240 acres
Pledger Ranch Fence	2010	Wildlife Friendly Fence
Radio Collar Monitoring		Herd movement & Hunting Season Planning
Neck Collar Monitoring		Elk immigration research
Landowner Herbicide Program	Annual	Reimbursement of \$150 herbicides
Landowner Fencing Program	Annual	Allotments of fencing materials

Project Highlights:

Landowner Fencing Materials Program - In response to public input received when the SPHPP Habitat Management Plan was first formulated, a Landowner Fencing Materials program was instituted to provide materials to repair fencing damage caused by big game movements. Landowners have been highly appreciative of this program. Qualified landowners receive an annual allotment of fencing repair materials. Over time, the SPHPP Committee has increased the dollar value of these allotments to keep pace with inflation.

In order to be eligible, a landowner must:

- have 160 acres (minimum), classified as agriculture
- allow a reasonable number of hunters access to the private property
- not charge over \$500 for access, vouchers or services
- materials must be used only to repair damages on the referenced parcel

USFS Spring Development - The SPHPP has long been involved in a cooperative habitat improvement program with the United States Forest Service, Fairplay Ranger District. The focus of the resulting projects have been spring and water system developments that encourage big game animals to utilize public lands away from private agriculture and cattle operations with a history of big game conflicts.

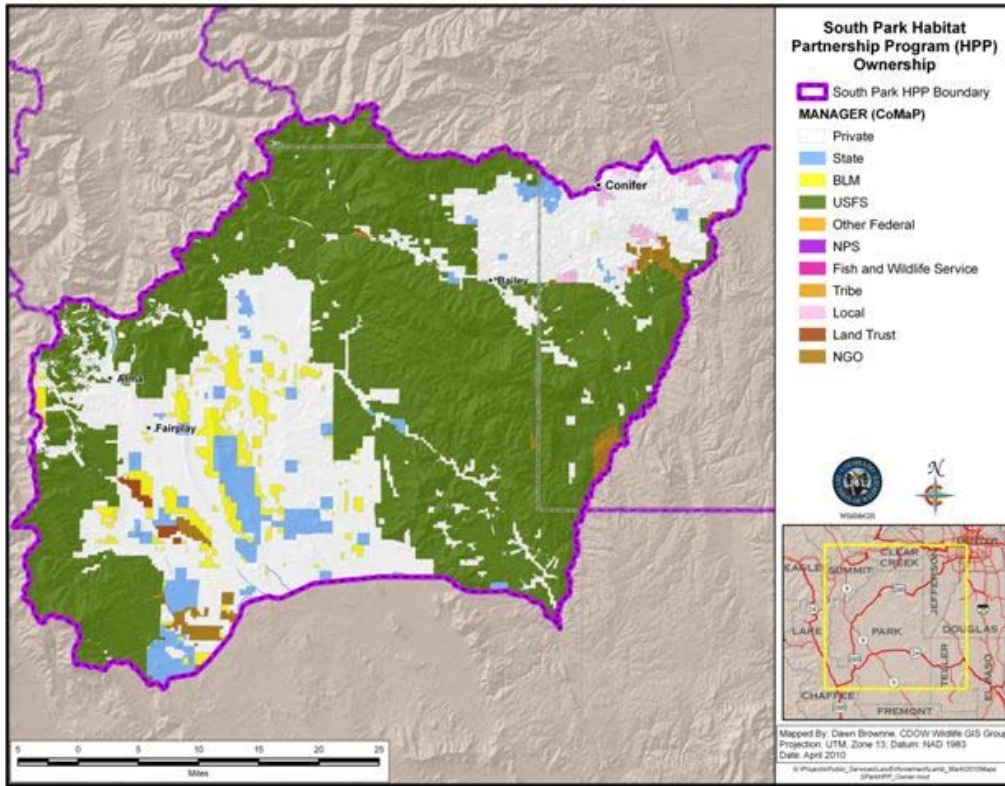
These projects also provide significant habitat improvement opportunities utilizing controlled cattle grazing techniques, as well as herd management opportunities resulting from public hunting access on public lands. Appendix Map 11 shows the water developments put in place through this program during the past 5 years.

Reinecker Ridge Habitat Improvements - Recognizing the importance that Reinecker Ridge (JMJ SWA) plays in providing public land habitat and hunting opportunities, the SPHPP committee has funded the development of springs and water sources on the property.

Additionally, with the assistance of the Colorado State Forest Service and the DOW, the SPHPP committee has helped fund prescribed burns in this area to rejuvenate the habitat so as to hold more big game longer on the SWA and reduce conflicts on adjacent private lands.

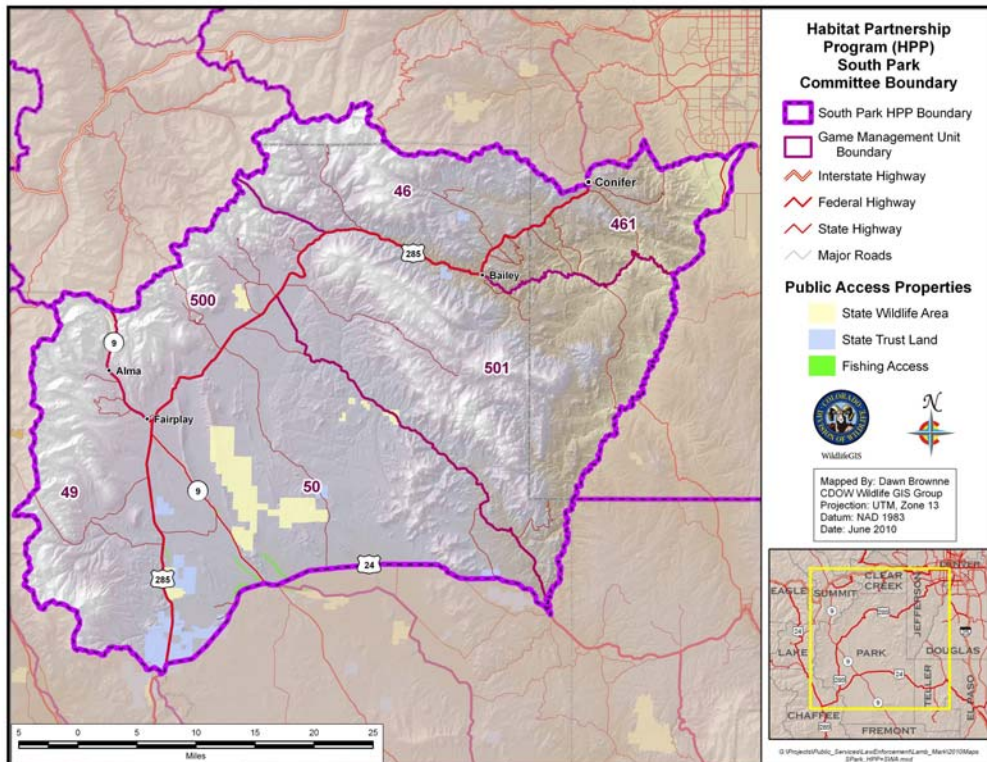
Appendix Map 1

SPHPP AREA LAND OWNERSHIP

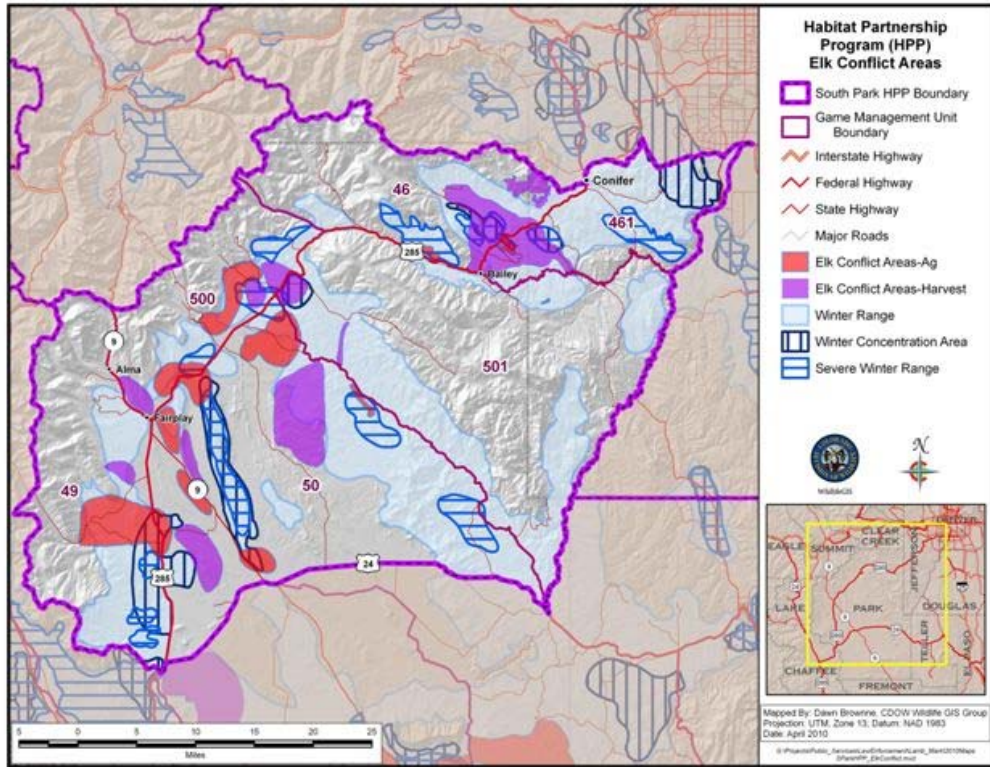


Appendix Map 2

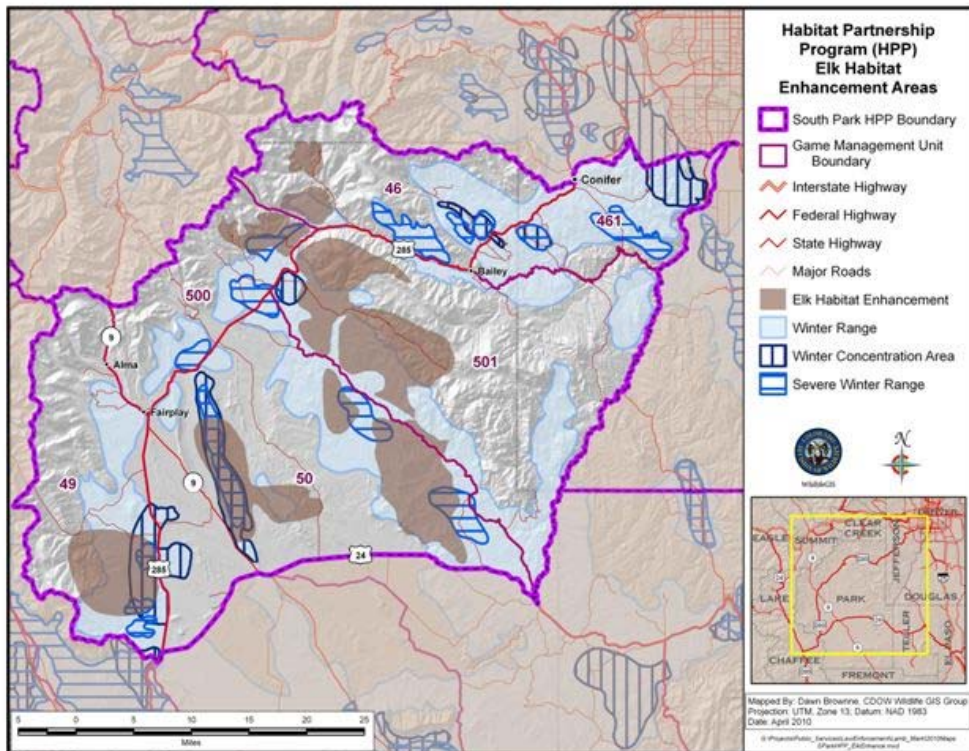
SPHPP AREA STATE WILDLIFE AREAS



SPHPP ELK CONFLICT AREAS

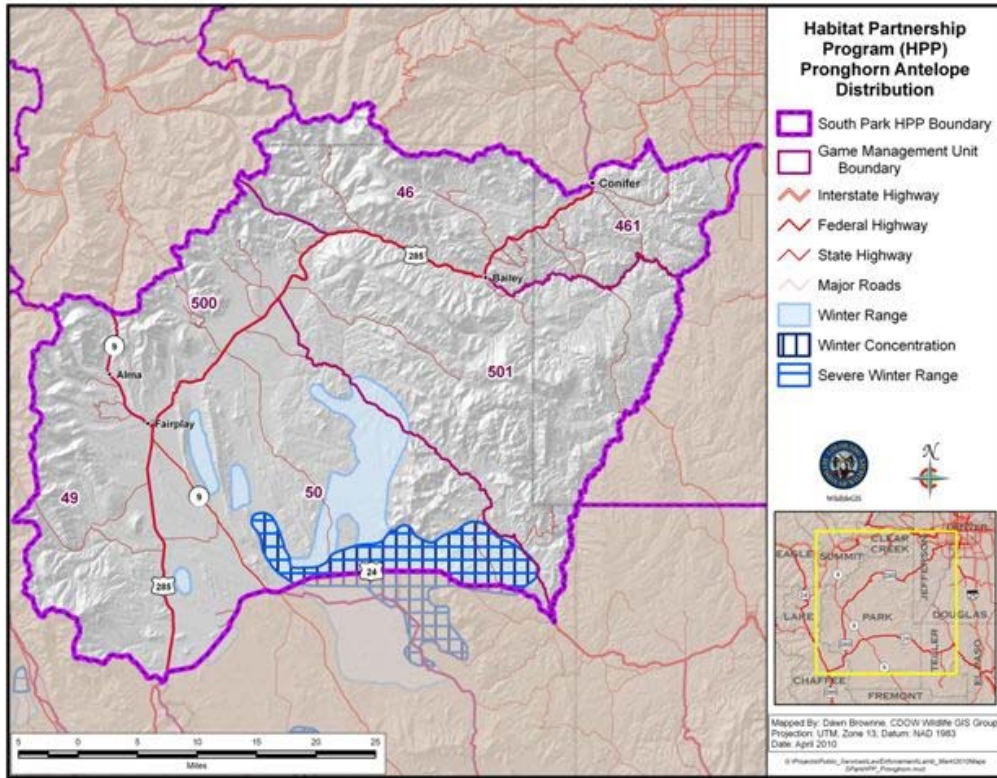


SPHPP ELK HABITAT ENHANCEMENT AREAS



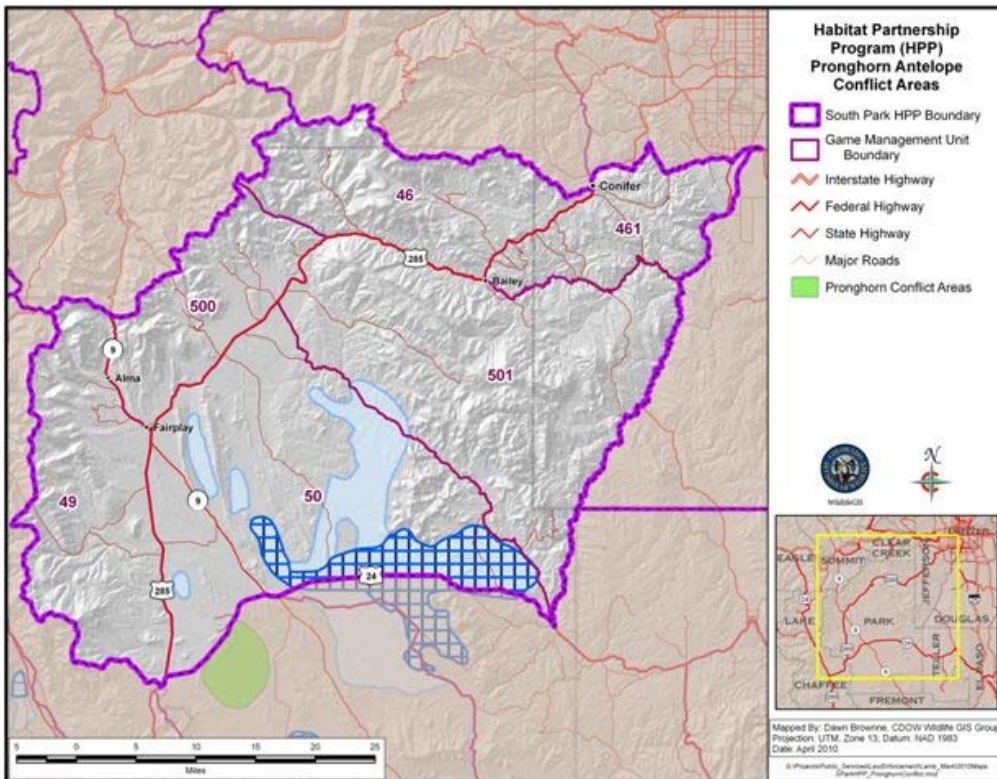
Appendix Map 7

SPHPP PRONGHORN ANTELOPE DISTRIBUTION



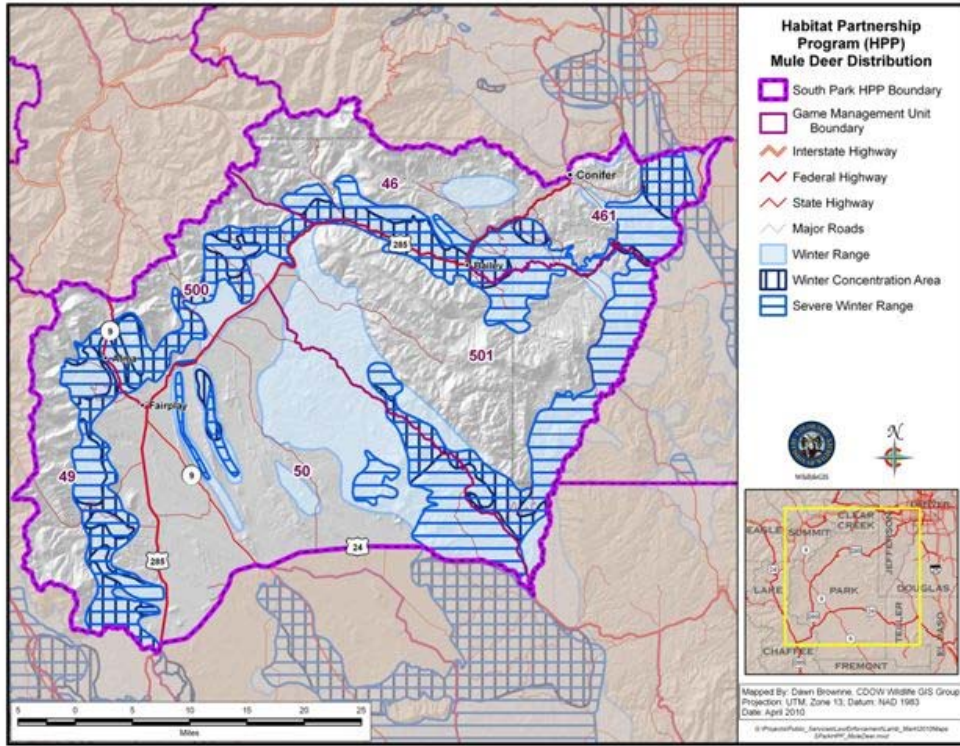
Appendix Map 8

SPHPP PRONGHORN ANTELOPE CONFLICT AREAS



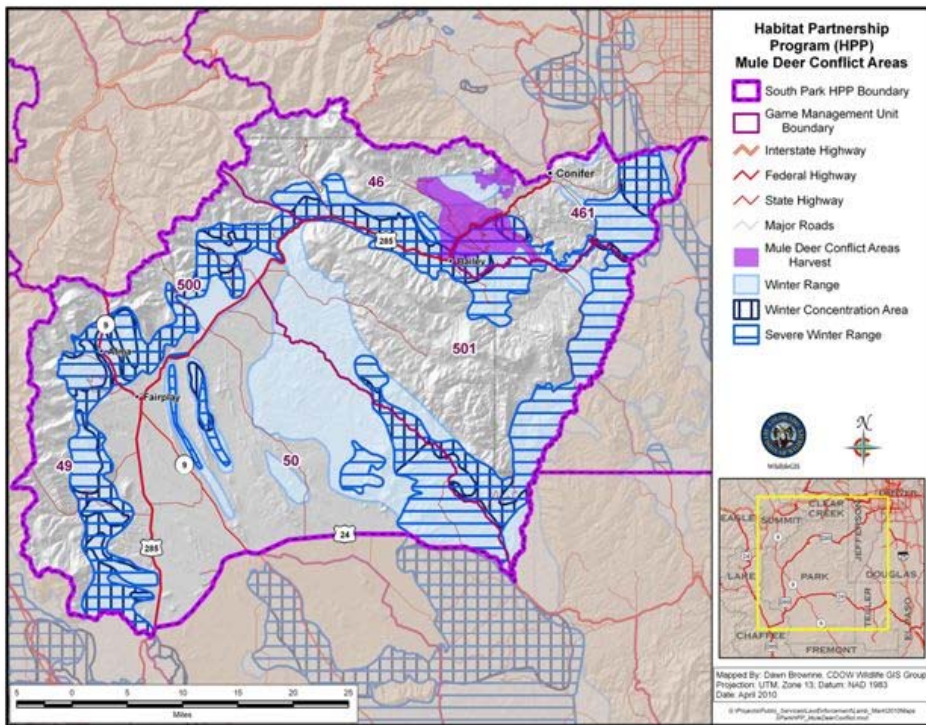
Appendix Map 9

SPHPP MULE DEER DISTRIBUTION

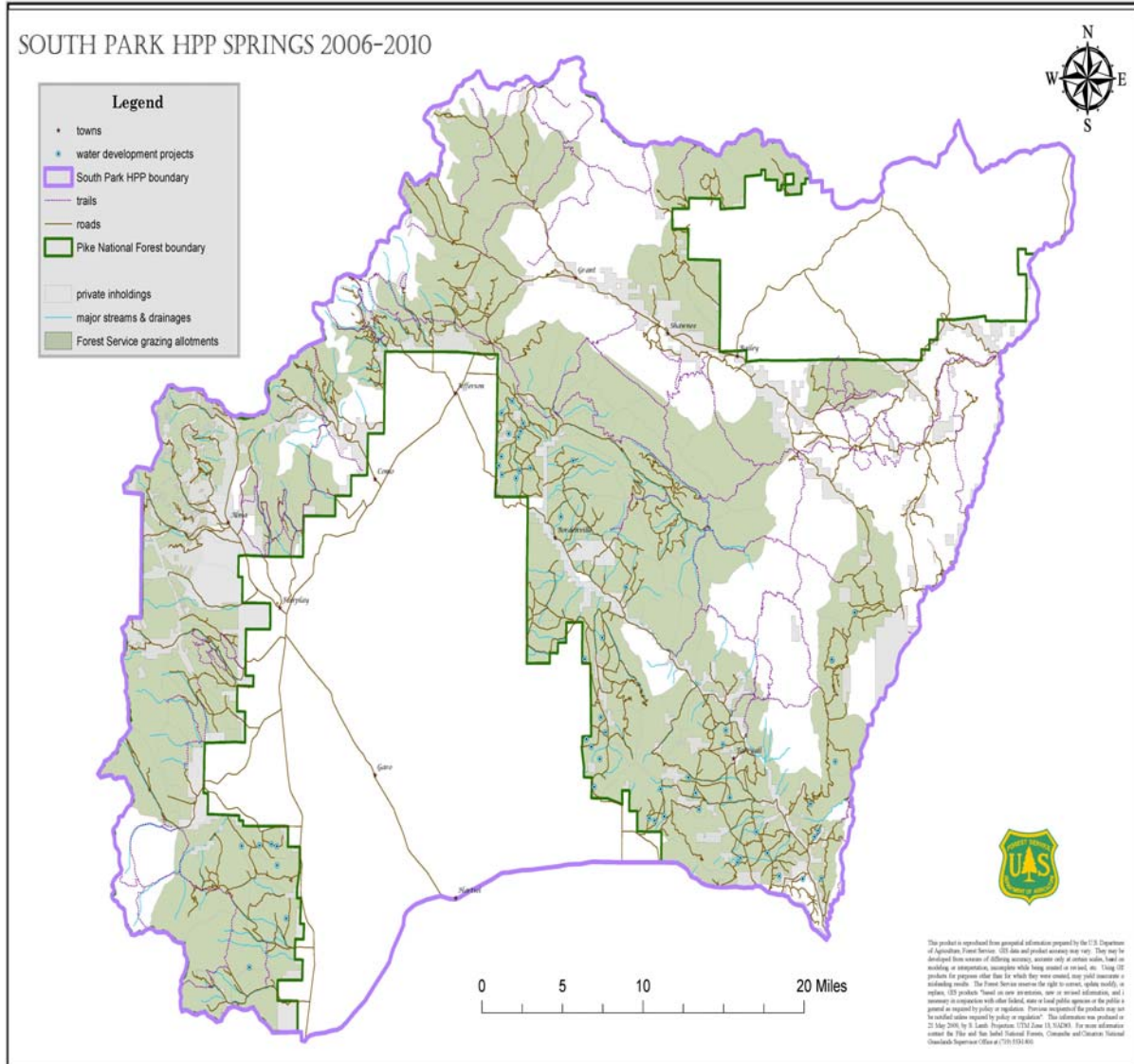


Appendix Map 10

SPHPP MULE DEER CONFLICT AREAS



SPHPP & USFS Water Developments 2006 - 2010



Appendix 12
SPHPP HMP Update 2010 Survey Results Summary

There were 65 surveys sent out. 4 address rejections. 25 completed (to some degree) forms returned

Property ownership ranged from 35 to 10,000 acres, leases up to 120,000 acres

Mixed or multiple uses: 22 cow/calf, 4 calf, 6 yearling, 3 horse, 1 llama, 1 goat

14 reported additional leases and/or strictly leased operations

6 reported Antelope Fence Conflicts

7 reported Antelope Forage Conflicts

2 reported Deer Fence Conflicts

3 reported Deer Forage Conflicts

19 reported Elk Fence Conflicts

14 reported Elk Forage Conflicts

0 reported Moose Fence Conflicts

1 reported Moose Forage Conflict (Sanborn)

1 reported Bear conflict

Elk numbers creating conflicts ranged up to 700 animals

20 Landowners allow hunting

As many as 50 hunters allowed on some properties

Several landowners wished more hunters & higher success ratios

15 Landowners obtain HPP fencing materials, all of which allow hunting

Herd size estimations Less-2, Same-6, More-15, Not Stated-2

20 Will or Will Try to attend a Public Meeting in Fairplay if scheduled

Topics to discuss:

Elk Management

Forage & Fence

Ranch Management

All topics that concern Ranching

I don't know if I have any input but would like to hear some ideas...

Comments:

- We are a wild life preserve trying to allow big game to live in their natural habitat.
- Really appreciate the fence materials to help w/ repairs. I think there should be more PLO tags available to landowners.
- Elk do not normally stay on our property, but often cross from Unit 50 to Unit 501 and back. When we see elk on the property, we call people that we know have a license... We have had problems in the past letting strangers on the property & are hesitant to let just anyone in... We also have cattle on the property year round-need to insure that hunters are careful.
- More money for fence repair materials, \$300 not enough, in lieu that a big portion of \$ comes from lottery.
- Elk winter on our place below Boreas Pass. They take any old grass but it comes back in the spring. Our place is very important winter ground for the elk (Check with Mark Lamb). Main conflict is fence damage starting in May and all summer.
- I had a baby bear for about a week; no mother was sighted at the time. I chased him away with PU horn honking, did obtain rubber shotgun shells but did not need them.
- There seems to be more elk every year - less hunter success.
- I lease all my land. No conflicts (Yet).
- In the earlier season they are (elk) not down and many hunters are unsuccessful. Antelope herds are increasing - just part of the cycle, would like them out of my hay stacks
- I am registered as a Backyard Habitat w/NWF -living w/ wildlife.
- No time to attend the meeting. Ranching is my sideline income.
- Antelope are not much of a concern. They are mostly on BLM, don't eat much but do break wires and pull out staples on older fence lines. I am concerned that large elk herds are getting closer (in winter) on Water Board property upstream and adjacent to me and greater numbers along HWY 9 this year. So far, forage use by elk has not been an issue on deeded land, but I do sustain fence damage when they pass through.