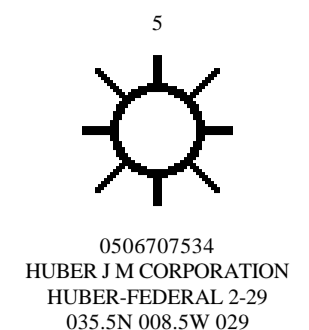
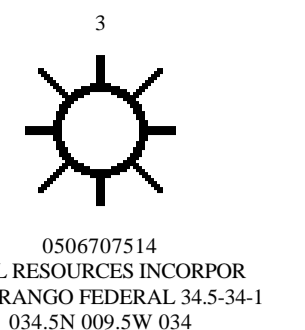
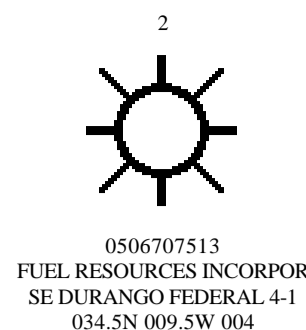
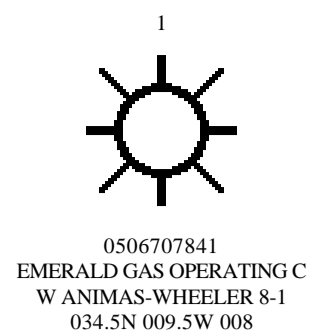


SW-NE CROSS SECTION N-0.5A

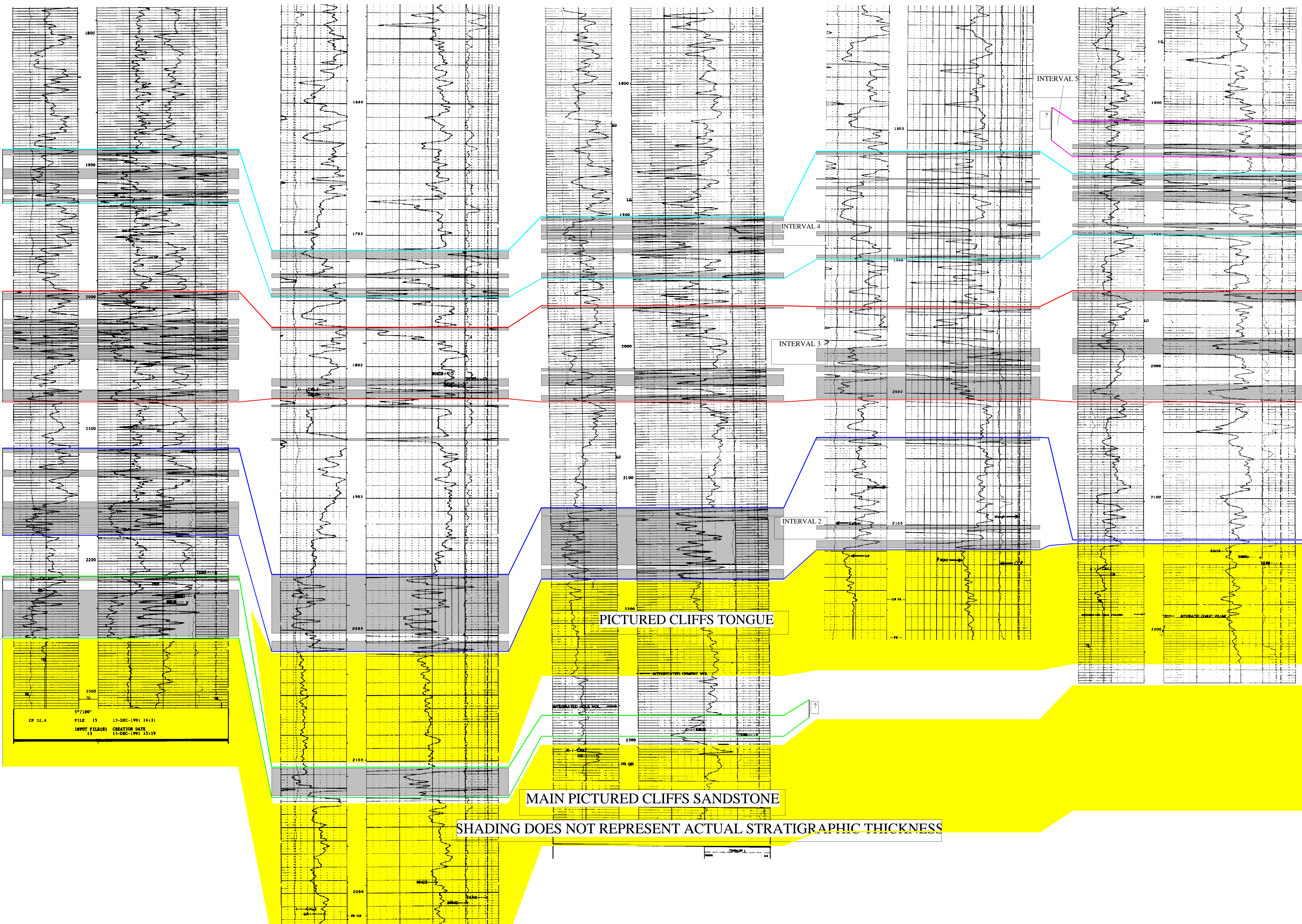


1.6mi

1.6mi

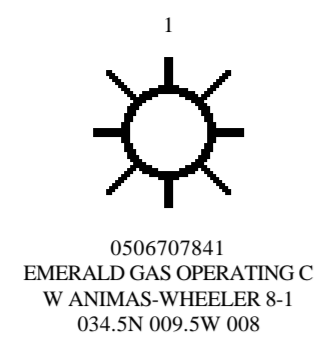
1.6mi

1.6mi



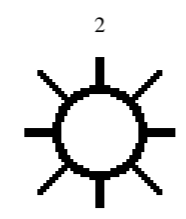
DATUM = BASE OF INTERVAL 3

SW-NE CROSS SECTION PARALLEL TO OUTCROP N-0.5B



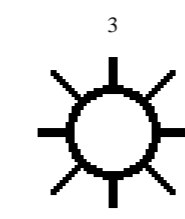
056707841
EMERALD GAS OPERATING CO
W ANDRUS WHEELER 8-1
034.5N 009.5W 008

2.0mi



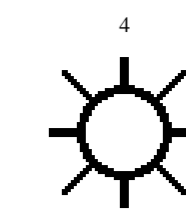
056707514
FUEL RESOURCES INCORPOR
SE DURANGO FEDERAL 34.5-34-1
034.5N 009.5W 034

1.6mi

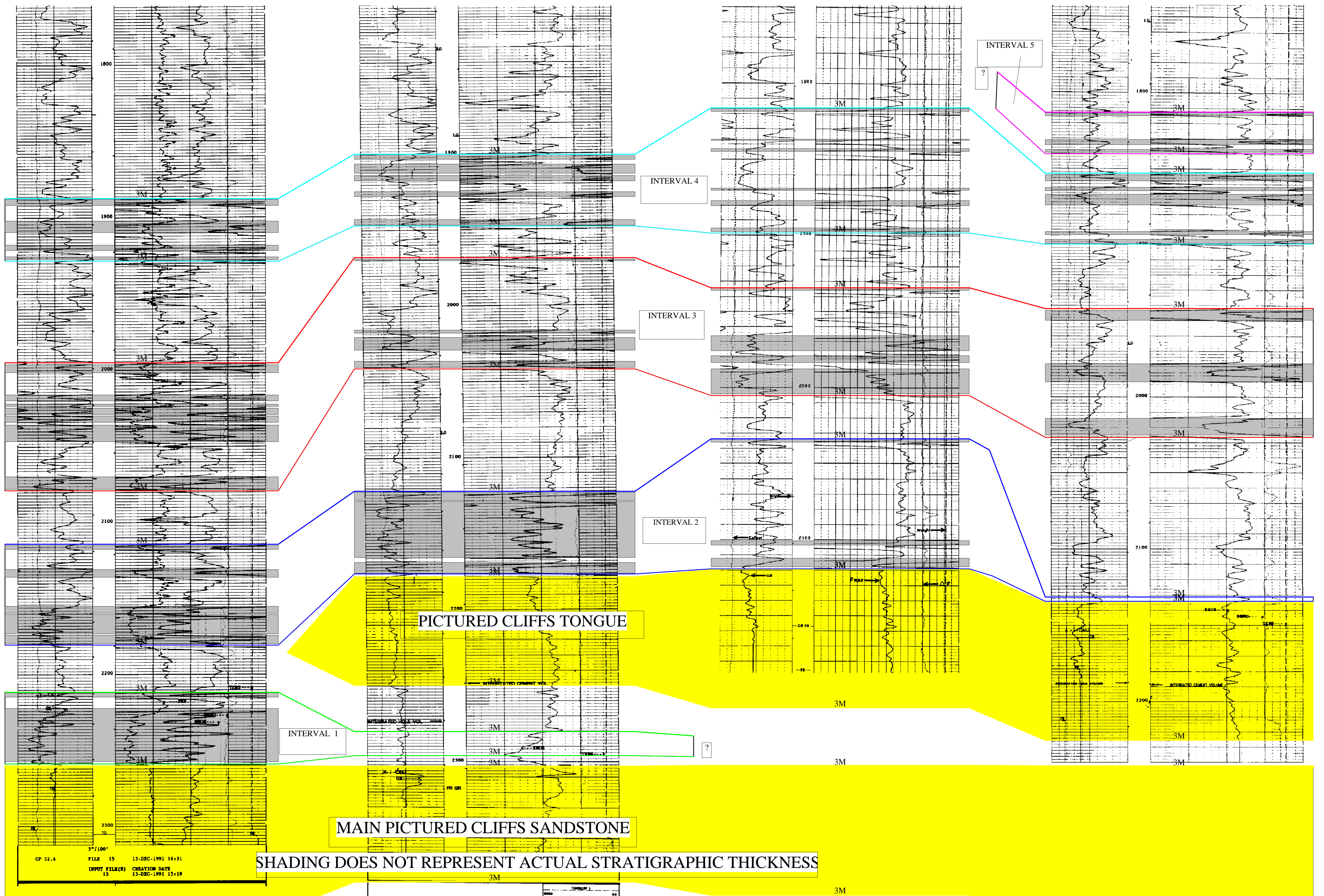


056706894
ALLEN VANCE & ASSOC INC
DAY V RANCH 1-35
035.5N 009.5W 035

2.0mi



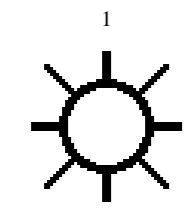
056707534
HUBER FM CORPORATION
HUBER FEDERAL 2-29
035.5N 008.5W 029



SHADING DOES NOT REPRESENT ACTUAL STRATIGRAPHIC THICKNESS

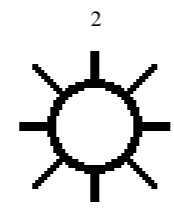
DATUM = TOP OF PC MAIN SANDSTONE

SW-NE CROSS SECTION N-0.5C



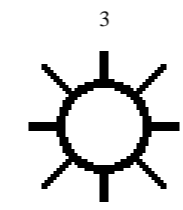
050670741
EMERALD GAS OPERATING CO
W ANNAS WHEELER S-1
05L2N 000 SW 004

1.5mi



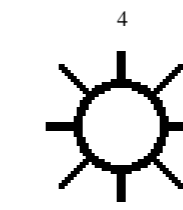
050670753
FUEL RESOURCES INCORPOR
SE DURANGO FEDERAL 34-54-1
05L2N 000 SW 004

1.5mi



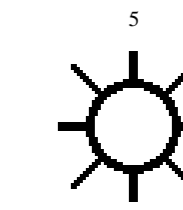
050670754
FUEL RESOURCES INCORPOR
SE DURANGO FEDERAL 34-54-1
05L2N 000 SW 004

1.5mi

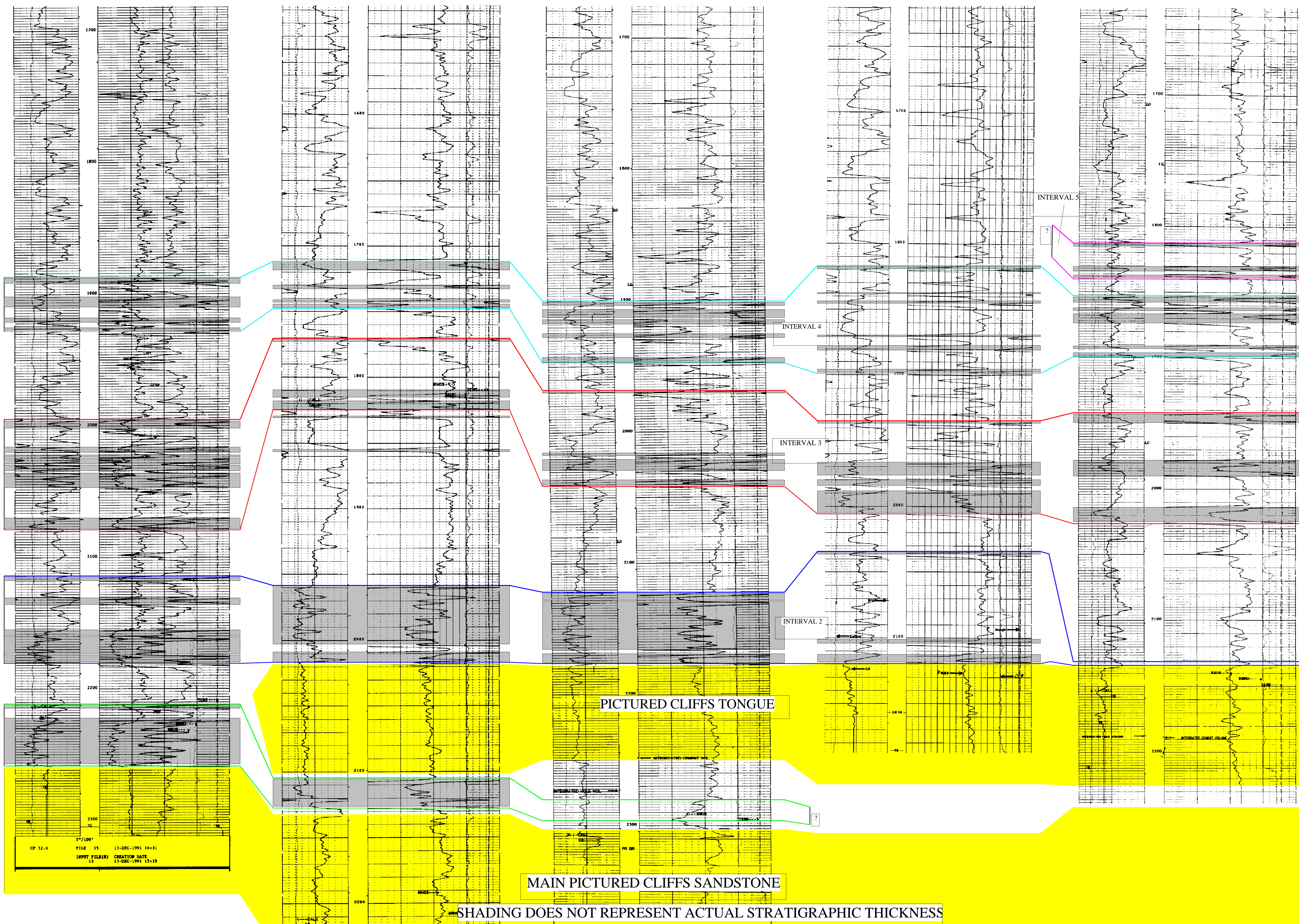


050670694
ALLEN VINCE & ASSOC INC
DAY V RANCH 1-35
05L2N 000 SW 004

2mi



050670734
HUBER AN CORPORATION
HUBER FEDERAL 2-29
05L2N 000 SW 004



DATUM = BASE OF INTERVAL 2