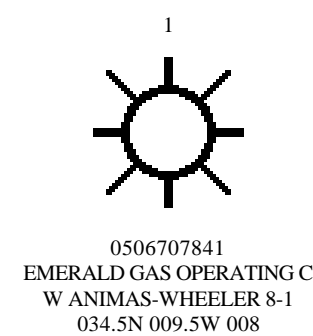
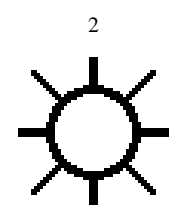


# SW-NE CROSS SECTION PARALLEL TO OUTCROP N-0.5B



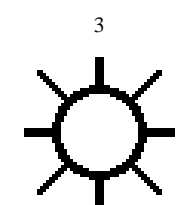
056707841  
EMERALD GAS OPERATING CO.  
W ANDRUS WHEELER 8-1  
034.5N 009.5W 008

2.0mi



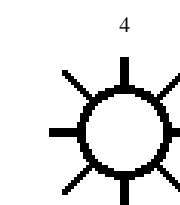
056707514  
FUEL RESOURCES INCORPOR  
SE DURANGO FEDERAL 34.5-34-1  
034.5N 009.5W 034

1.6mi

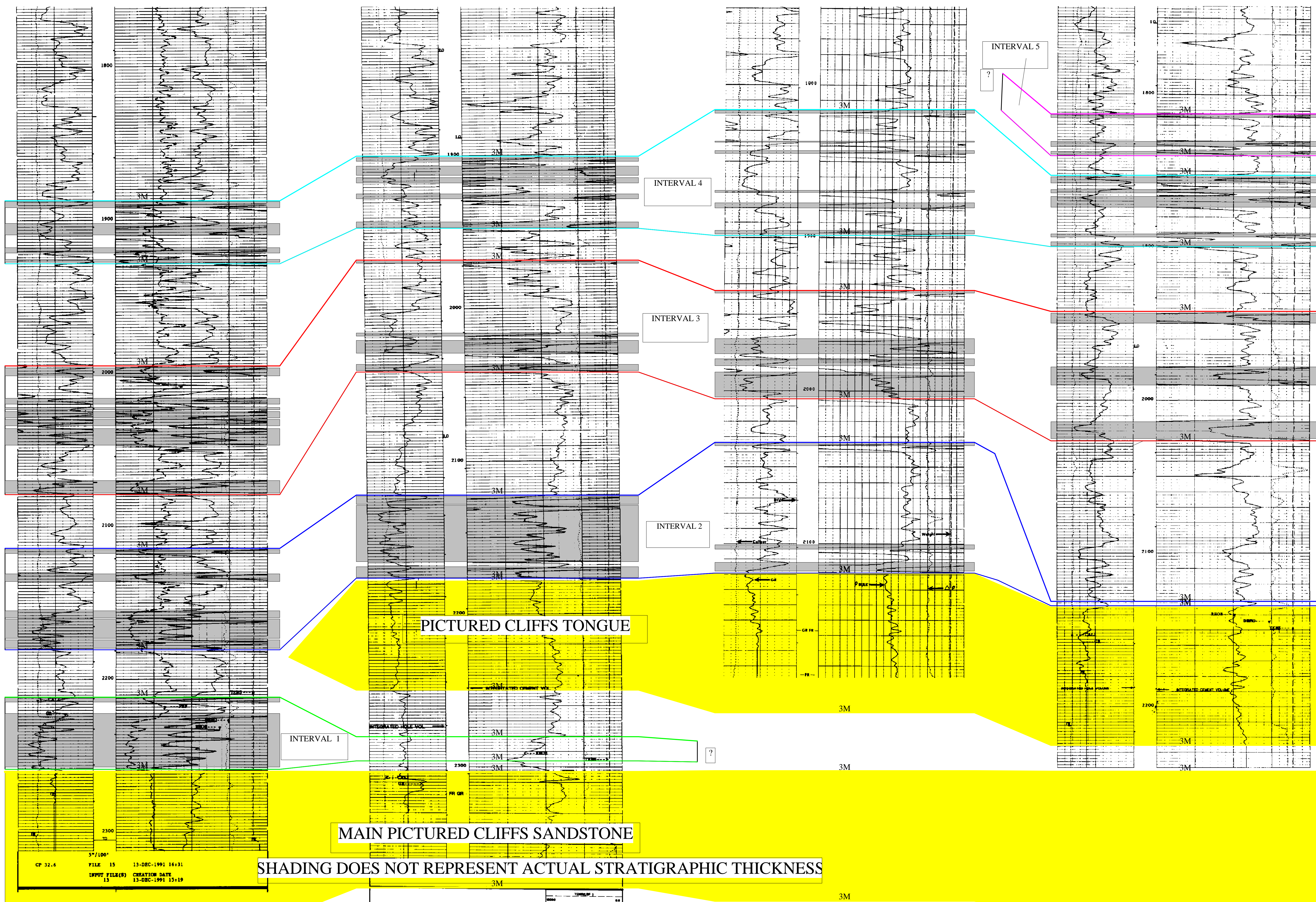


056706894  
ALLEN VANCE & ASSOC INC  
DAY V RANCH 1-35  
035.5N 009.5W 035

2.6mi



056707534  
HUBER FM CORPORATION  
HUBER FEDERAL 2-29  
035.5N 008.5W 029



SHADING DOES NOT REPRESENT ACTUAL STRATIGRAPHIC THICKNESS

DATUM = TOP OF PC MAIN SANDSTONE