

# City of Creede town

## Demographic and Economic Profile



**COLORADO**  
Department of Local Affairs

### Community Quick Facts

Population (2013)	292
Ann. Population Growth (2010 to 2013)	0.60%
Median HH Income (ACS 08-12)	\$30,000
Employment (County in 2013)	635

Source: State Demography Office  
U.S. Census Bureau

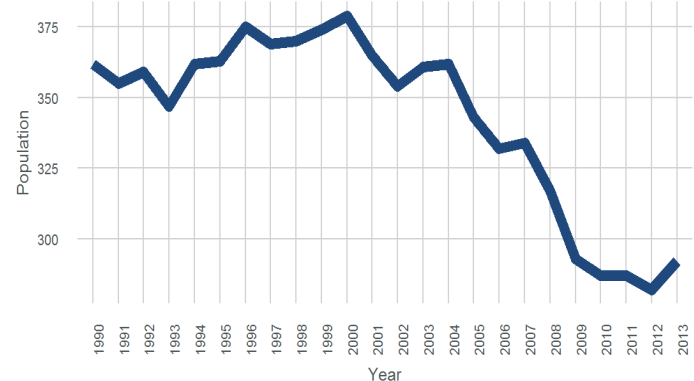


## Population

Population Estimates and Forecasts for the resident population are produced by the State Demography Office.

- Creede experienced steady population loss between 2000 and 2010.
- Since 1990, Creede has consistently seen slower growth than the state as a whole.
- Since 2010 both the city and Mineral county have grown slightly despite prior losses due to a small increase in jobs.

City of Creede Population, 1990 to 2013

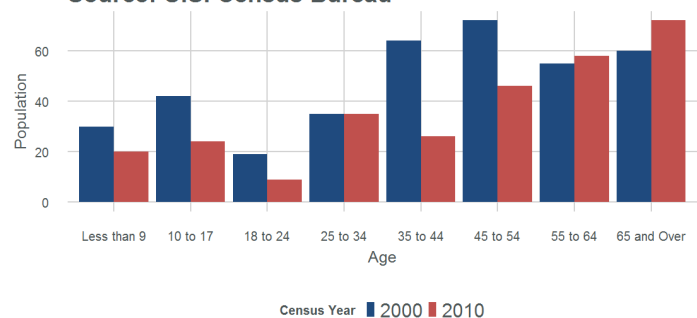


	Population		Annual Average Growth Rate (%)	
	City of Creede town	Colorado	City of Creede town	Colorado
1990	362	3,294,473		
1995	363	3,811,074	0.06%	3.00%
2000	379	4,338,801	0.90%	2.60%
2010	287	5,049,717	-2.70%	1.60%
2013	292	5,264,890	0.60%	1.40%

### Population By Age

Creede's population by age is shown in the chart to the right for both 2000 (darker bar) and 2010 (lighter bar). The only increases were in the 55 to 64 and 65 and over groups, which could indicate a need to evaluate aging services in the city. Age groups most commonly associated with families are among the largest declines in Creede.

City Of Creede Town Population by Age  
Source: U.S. Census Bureau

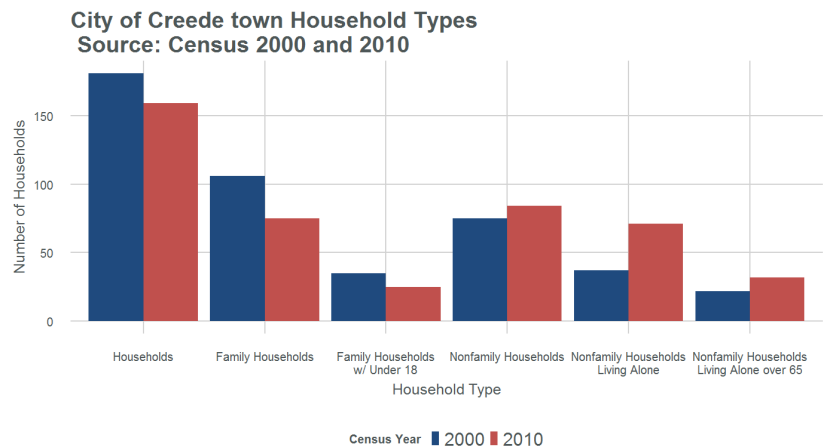


## Housing & Households

City of Creede town Housing Units	2000	2010	2010 %
Total Housing Units	275	270	
Occupied Housing Units	181	159	58.90%
Owner-Occupied Units	125	126	79.20%
Renter-Occupied Units	56	33	20.80%
Vacant Housing Units	94	111	41.10%
For Seasonal	73	83	74.80%
All Other Vacant	21	28	25.20%

- The overall vacancy rate was 41% in 2010, excluding seasonal housing it was about 10%.
- Vacancy rates were higher than the state average due largely to seasonal units.
- Most of the units are owner occupied (79%) which means that there are very few rental units.

- Between 2000 and 2010 households decreased overall.
- The largest decline in household types was in family households. As noted by changes in the age distribution above. These decreases were partially offset by increases in nonfamily households especially those living alone and living alone over 65.



## Race & Ethnicity

### City of Creede town Population by Race/Ethnicity

	2000	2010	2010 %
Total	377	290	
White	361	277	95.50%
Black or African American	0	2	0.69%
American Indian or Alaska Native	3	1	0.36%
Asian	0	0	0%
Native Hawaiian and Other	0	0	0%
Some Other Race	0	0	0%
Two or More	7	4	1.38%
Hispanic	6	6	2.07%

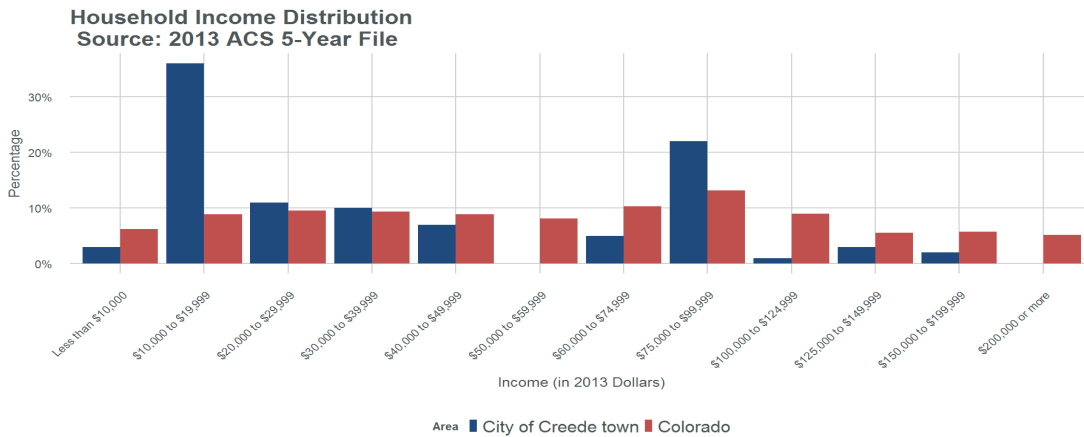
Source: U.S. Census 2010

- Creede is significantly less diverse than the state as a whole.
- The overall decrease between 2000 and 2010 was 87, or just over 23%. The majority of this change was within the White population.

# Income

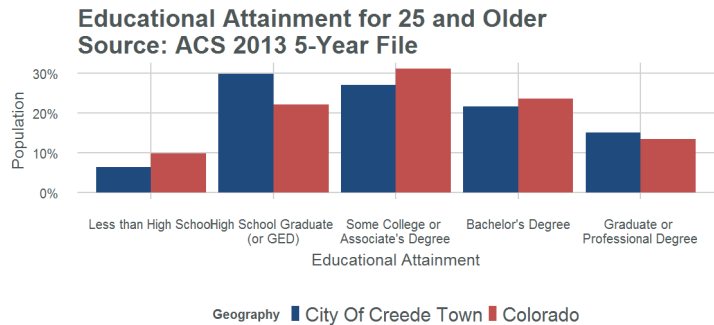
The chart below shows the distribution of income in Creede compared to the rest of the state. Creede has a larger than expected share of those making \$10,000 to \$19,999 than the state and very few households making more than \$100,000. This lower level of income reflects the industry mix and dependence on Tourism. Additionally, the small number of people in Creede may lead to small sample sizes in the ACS which can add uncertainty to these estimates.

The Median Household Income (MHI) for City of Creede town is \$30,000, which is lower than the state MHI of \$58,433.



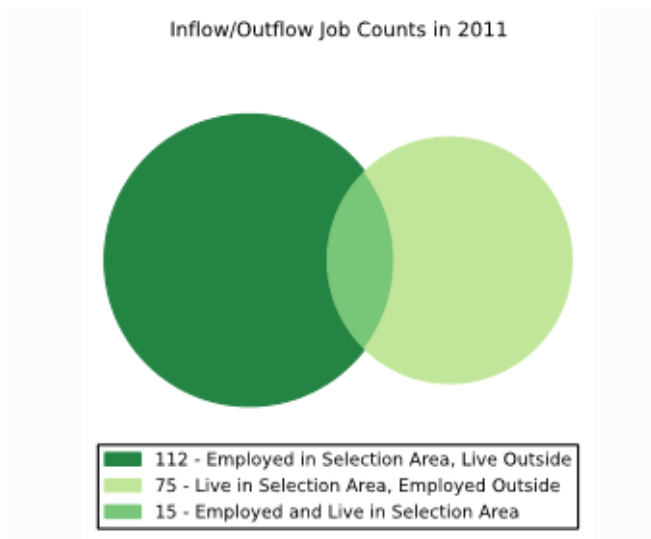
# Education

Creede has a slightly lower levels of educational attainment than the state as a whole, which is likely related to the high level of service industries. These industries tend to have lower educational requirements. Creede is fairly similar to the state at the higher levels of education.



# Commuting

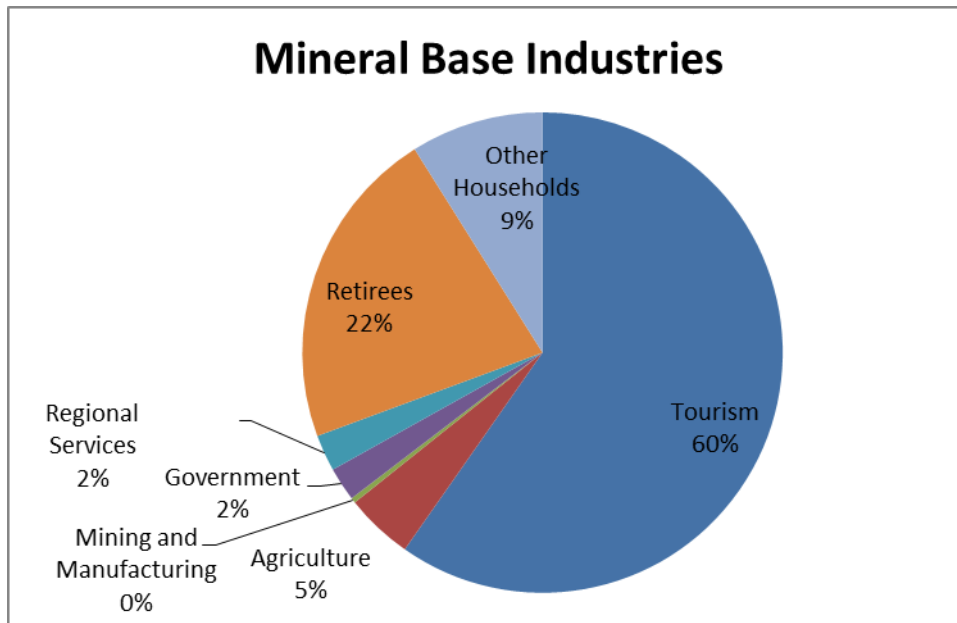
Commuting plays an important role in the economy of an area because not all workers live where they work. Commuting impacts roads and access to employees. The graph to the side shows the data by job and by resident worker. Just under 12% of the jobs are held by residents and 88% of the jobs are held by people who live outside the city. Considering Creede's labor force, just under 17% work in Creede but 83% are employed outside of the city.



## Jobs & the Economy

The City of Creede has a slightly different industry mix than Mineral county, as evidenced in the chart below. The largest industries by employment are Accommodation and Food, Government, and Retail. The Base Industries chart shows the centrality of Tourism and Retirees to the county. This likely drives the industry mix. The industry mix is not especially diverse in Creede or Mineral, so it will be important to watch economic conditions in these industries. The relatively small population in Mineral county is not well-suited to supporting a large number of jobs.

Total employment in the county was estimated to be 635 in 2013. Mineral has gained approximately 50 jobs since 2010.



Share of Jobs by Industry	Mineral	Creede
Agriculture	4%	0%
Mining	0%	4%
Utilities	0%	0%
Construction	8%	5%
Manufacturing	0%	0%
Wholesale trade	0%	0%
Retail Trade	10%	16%
Transportation and warehousing	0%	0%
Information	0%	0%
Finance activities	1%	2%
Real estate	3%	1%
Professional and business services	5%	1%
Management of companies and enterprise	0%	0%
Admin and waste	4%	3%
Education	0%	0%
Health Services	1%	2%
Arts, Entertainment, and Recreation	28%	10%
Accommodation and food	18%	31%
Other services, except public administration	4%	1%
Government	14%	23%

Source: CDLE, State Demography Office