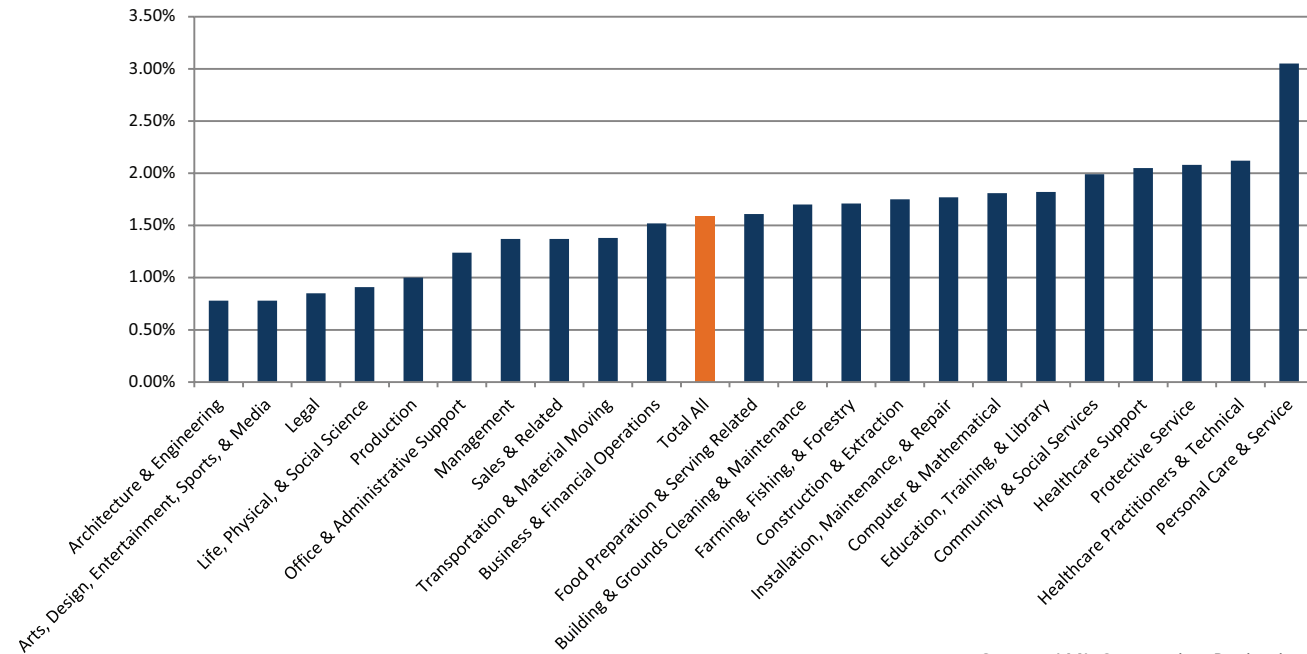


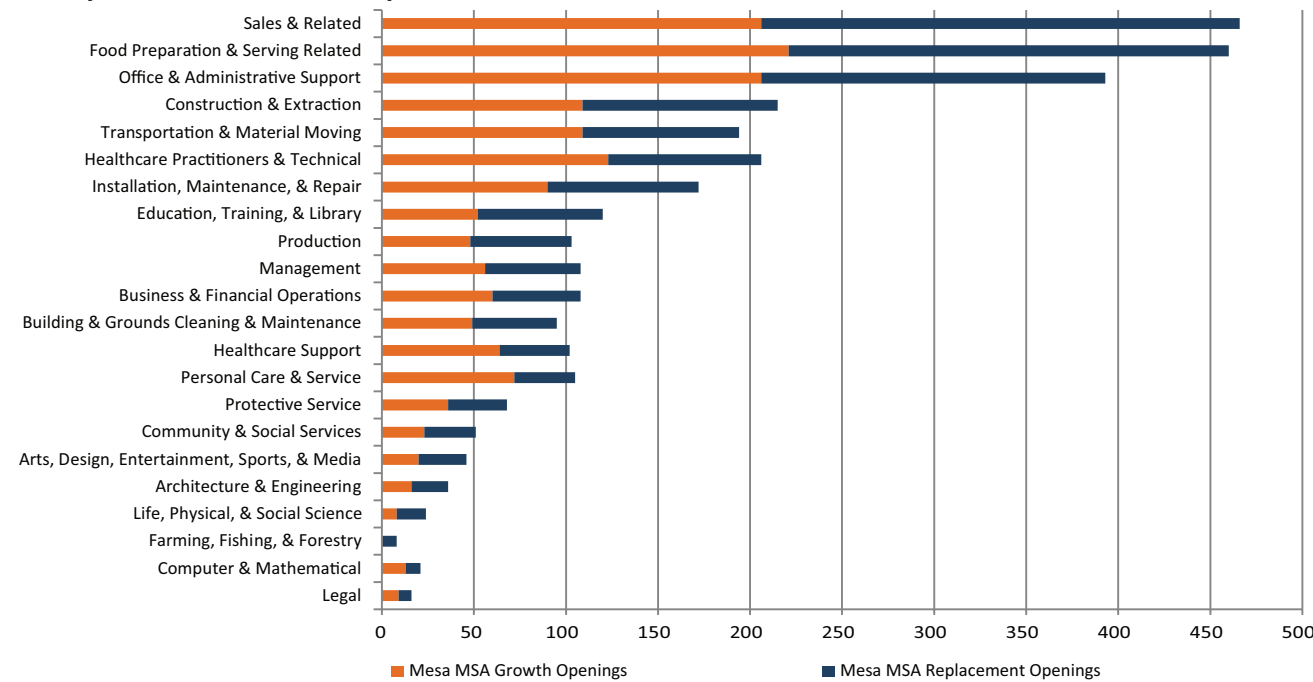
Occupation Projections through 2023

Annual Average by Percent Change



Source: LMI, Occupation Projections

Occupation Growth and Replacement



Source: LMI, Occupation Projections

Labor Market Information (LMI) in the Colorado Department of Labor and Employment collects and analyzes information about labor market trends throughout Colorado. Data are presented in a variety of ways: industry employment and wages, current and projected industry and occupation levels, occupational wages, and labor force employment and wages. LMI conducts various research projects and assists workforce centers and others with customized regional information requests.

For the Career Decision Maker:

- Identify and expand your job goals
- Review complete job descriptions
- Identify your job and personal skills
- Analyze the skills you need to develop to reach your career goals
- Learn about wages/educational requirements for specific jobs

For the Job Seeker:

- Identify occupations that make use of your existing skills
- Develop your resume with the skills employers are seeking
- Identify companies by industry to include in your job search
- Prepare for an interview
- Review job openings

To Research Business Needs:

- Gather demographic information
- Find your competition
- Identify new potential customers
- Gain a better understanding of your local labor market

When New Skills or Employees are Needed:

- Build job descriptions for new job openings
- Identify the skills you need to successfully fill job openings
- Find common educational requirements for your job opening
- Pinpoint local education and training agencies
- Help your employees to upgrade their skills and credentials
- Attract qualified job candidates by learning about typical wages for occupations in your geographic area.

Economic Outlook: 2015

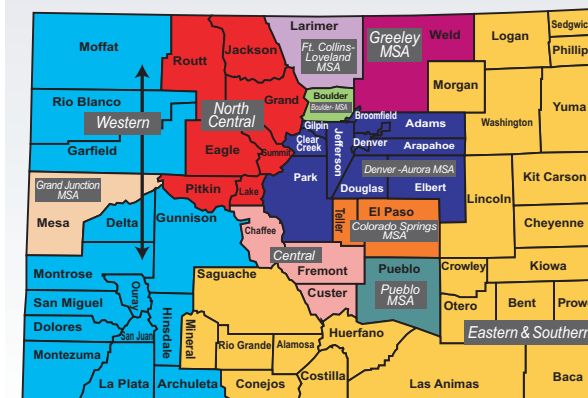
- 2014: US added over 2.5 million jobs (1.9%), most added since 2000
- GDP growth in 2% range in 2013 & 2014
- Global economy weak: seen in lower oil prices, EU financial crisis & China's stock market turmoil
- Some regions of the US outperforming others

- Colorado was in the top 5 states for GDP growth in 2014, due to energy production, which is slowing in 2015
- Year-over-year employment growth slowed in Colorado from its peak of 3.6% in Sept. 2014 to 2.5% in May 2015

- o Grand Junction MSA had below statewide average year-over-year employment growth in May: 1.5%
- o Ranking 6th out of 7 among Metro Areas

- June 2015 Unemployment Rates
 - o United States 5.3%
 - o Colorado 4.4%
 - o Grand Junction MSA 6.3%

Labor Market Information Regions



Demographics

Grand Junction is a regional service center for the Western Slope, especially in the areas of health care and education. It also serves as a financial services, transportation and distribution, and trade hub for the region. This is the stable part of the regional economy; the energy sector is still a major driver of the ups and downs the area has experienced for decades. Recent energy industry contraction has resulted in a small degree of out-migration from the region.

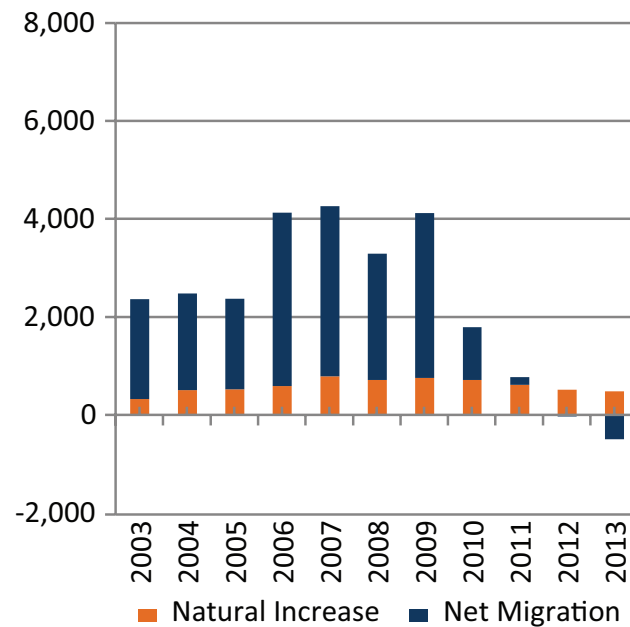
Grand Junction MSA Snapshot	
Population (2013)	147,811
Labor Force (May 2015)	73,482
Unemployment Rate (May 2015)	6.30%
Per Capita Income (2013)	\$37,222
Median Household Income (2013)	\$46,842

Source: Colorado State Demography Office, US Bureau of Economic Analysis

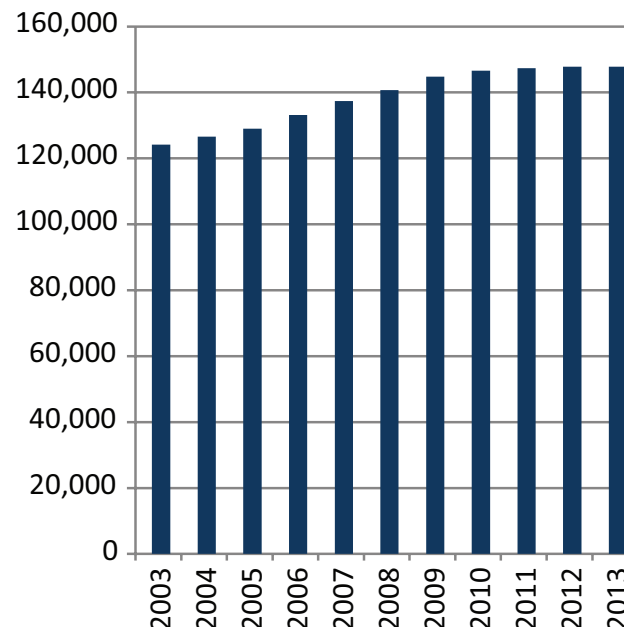
Top Industry Sector	2014 Employment
Health Care/Social Assistance	10,129
Retail Trade	7,781
Accommodation/Food Service	6,550
Educational Services	4,514
Construction	3,890
Administrative/Waste Services	3,260
Public Administration	3,240
Mining	3,116
Manufacturing	2,792
Wholesale Trade	2,547

Source: LMI Quarterly Census of Employment and Wages

Grand Junction MSA Net Migration & Natural Increase



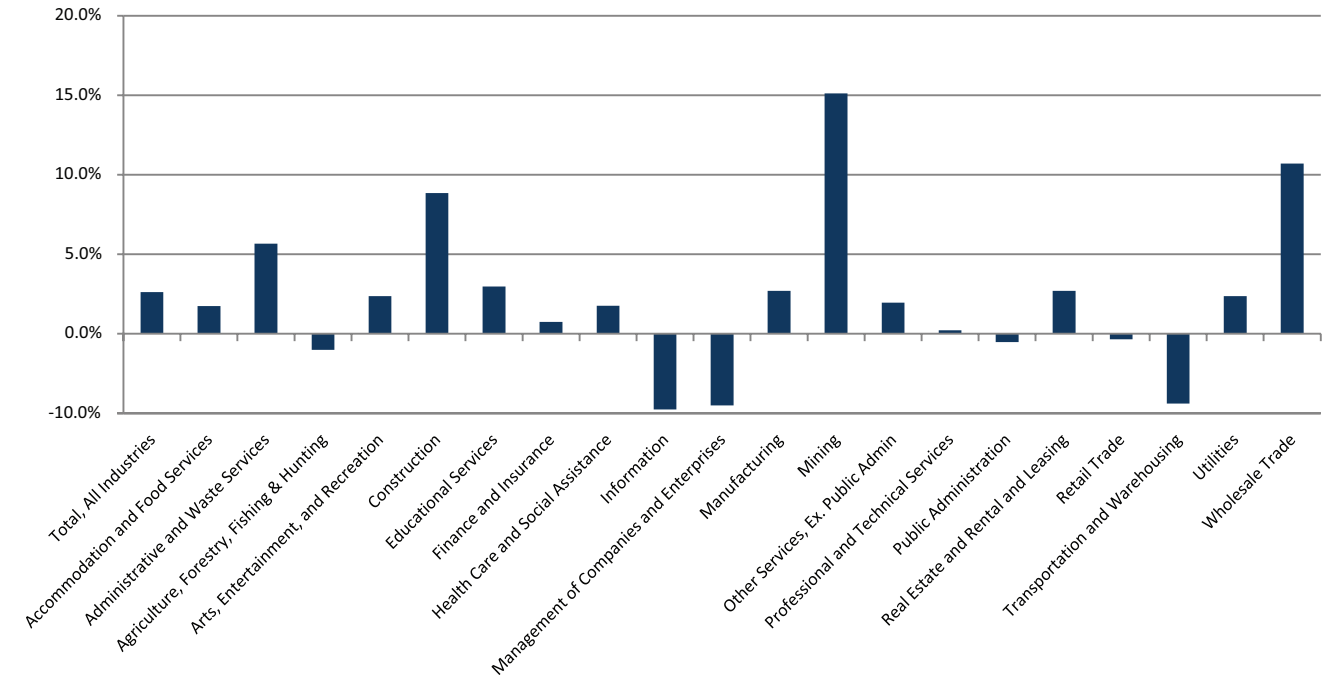
Grand Junction MSA Population



Source: Colorado State Demography Office

Industry

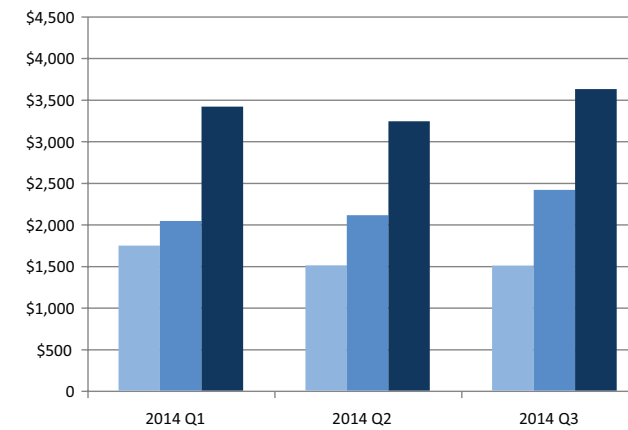
Grand Junction MSA Growth by Industry 2013-2014



Source: LMI Quarterly Census of Employment and Wages

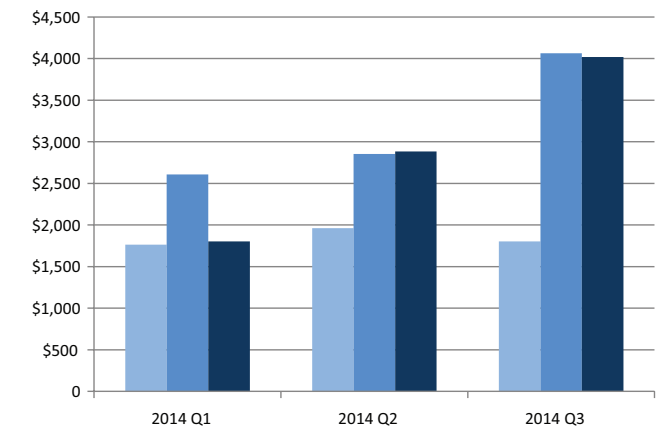
Local Employment Dynamics (LED) has a number of valuable tools to assist Workforce Centers. The most up-to-date is Quarterly Workforce Indicators (QWI). The example below shows data that may be of interest to a young worker contemplating a career in either Wholesale Trade or Transportation & Warehousing. This shows average monthly wages in those sectors by age group for 2014.

Grand Junction MSA QWI Transportation & Warehousing



Age Group	19-21	22-24	25-34
2014 Q1	\$1,744	\$2,041	\$3,414
2014 Q2	\$1,506	\$2,109	\$3,239
2014 Q3	\$1,502	\$2,414	\$3,626

Grand Junction MSA QWI Wholesale Trade



Age Group	19-21	22-24	25-34
2014 Q1	\$1,763	\$2,606	\$4,094
2014 Q2	\$1,960	\$2,852	\$4,064
2014 Q3	\$1,801	\$2,882	\$4,019