

Colorado's Out of Home Population by Program Area 5

July 1, 2007 - June 30, 2008

(SFY 2008)

In the Trails system, a report of abuse or neglect to a county is called a "referral". If the "referral" is accepted for investigation, it becomes an assessment, which may or may not become a case. A child receiving services in an assessment or a case is counted as an involvement. The Program Area 5 graphs in this presentation compare all Program Area 5 children in assessments and cases to Program Area 5 children in out of home placements.

Initial Report → Referral → Assessment → Case

For State Fiscal Year (SFY) 2008, 41,785 children were involved in the child welfare system. Out of home (OOH) placement services were provided to 12,743 children. The following graphs represent data regarding Program Areas, highlighting Program Area 5 - Children in Need of Protection (PA5) for involvements and out of home population by Age, Gender and Race/Ethnicity. The definition of Program Area 5 from rule is: "To protect children whose physical, mental or emotional well-being is threatened by the actions or omissions of parents, legal guardians or custodians, or persons responsible for providing out-of-home care, including a foster parent, an employee of a residential child care facility, and a provider of family child care or center-based child care. The county shall provide services targeted to achieve the following:

- A. Children are secure and protected from harm;
- B. Children have stable, permanent and nurturing living environments; and,
- C. When appropriate, children experience family continuity and community connectedness."

The definition of Program Area 4 - Youth in Conflict (PA4) is: "Program Area 4 services are provided to reduce or eliminate conflicts between youth and their family members or the community when those conflicts affect the youth's well-being, the normal functioning of the family or the well-being of the community. The focus of services shall be on alleviating conflicts, protecting the youth and the community, re-establishing family stability, or assisting the youth to emancipate successfully."

The definition of Program Area 6 - Children in Need of Specialized Services (PA6) is: "To provide statutorily authorized services to specified children and families in which the reason for service is not protective services or youth in conflict. These services are limited to children and families in need of subsidized adoption or Medicaid-only services, or to children for whom the goal is no longer reunification. The purpose of services in Program Area 6 is to fulfill statutory requirements in the interests of permanency planning for children. "

The Program Area of "Other" represents Division of Youth Corrections Medicaid-Only or Emancipation Medicaid children. Children must meet specific Program requirements to receive services under this program area.

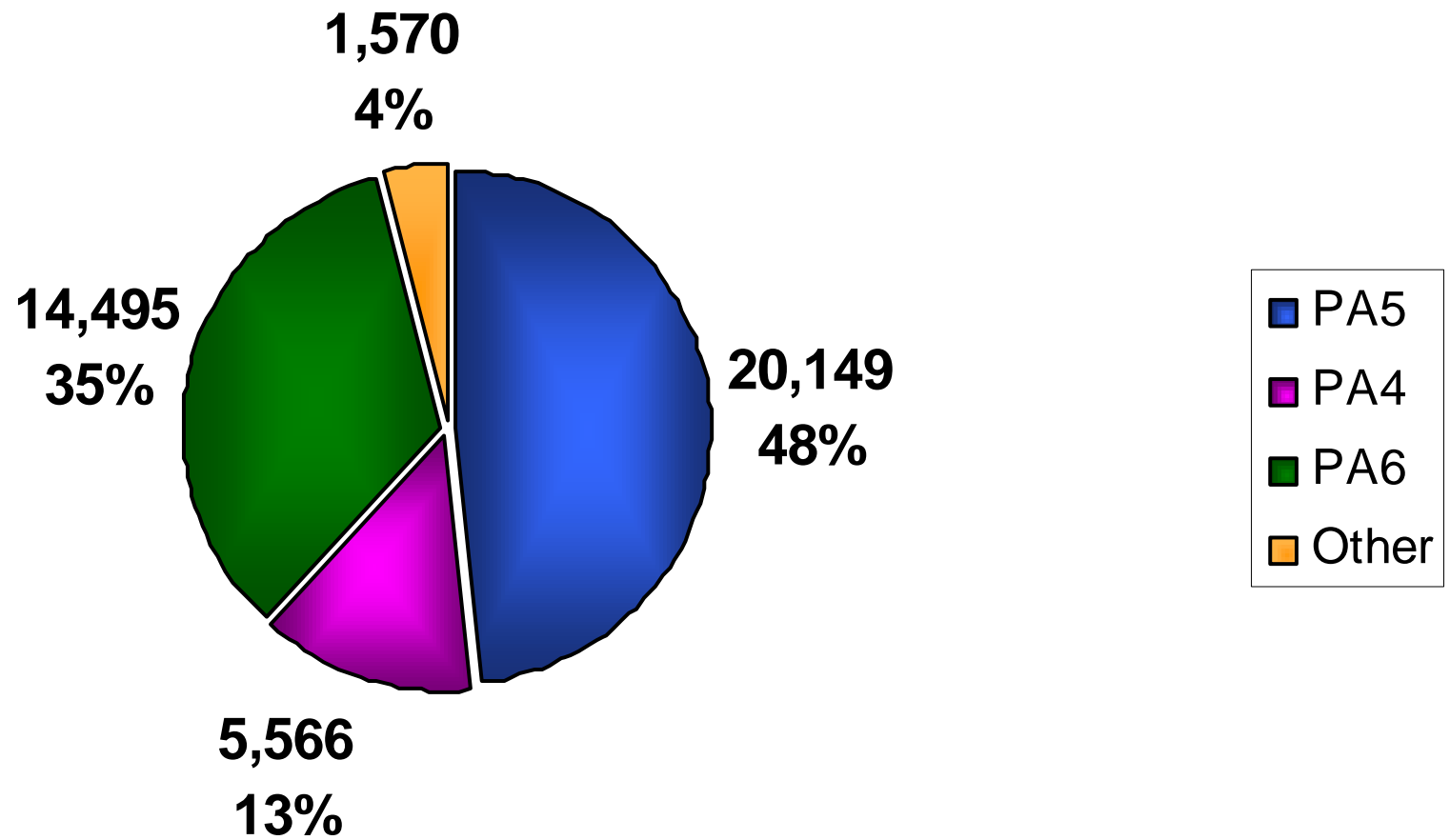
The graphs contained in this report are:

1. Program Areas - All
2. Program Area 5 - Age
3. Program Area 5 - Gender
4. Program Area 5 - Race/Ethnicity

Colorado's Out of Home Population by Program Area 5
July 1, 2007 - June 30, 2008
(SFY 2008)

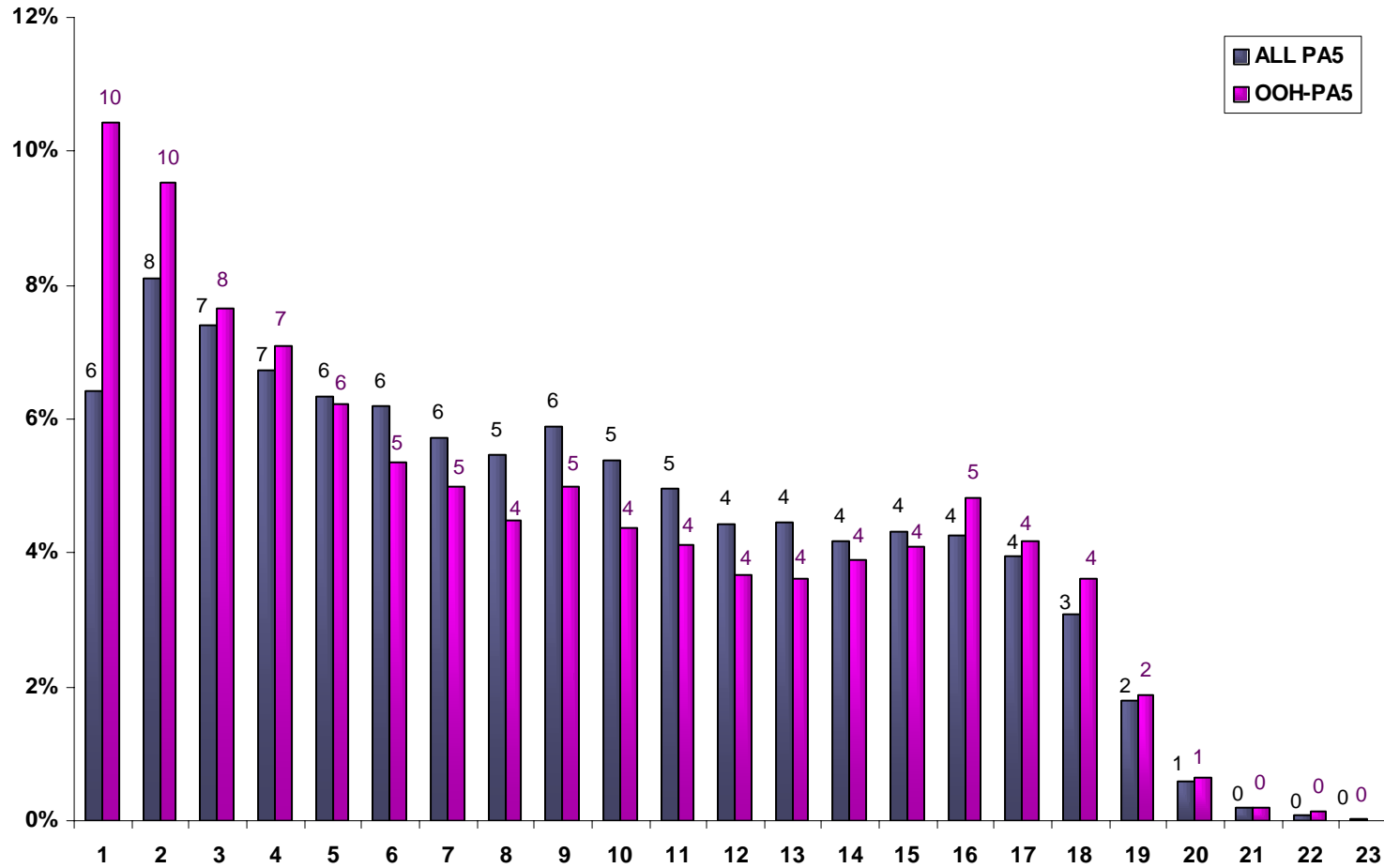
Program Areas - All

(5 clients excluded due to missing data)



Colorado's Out of Home Population by Program Area 5 July 1, 2007 - June 30, 2008 (SFY 2008)

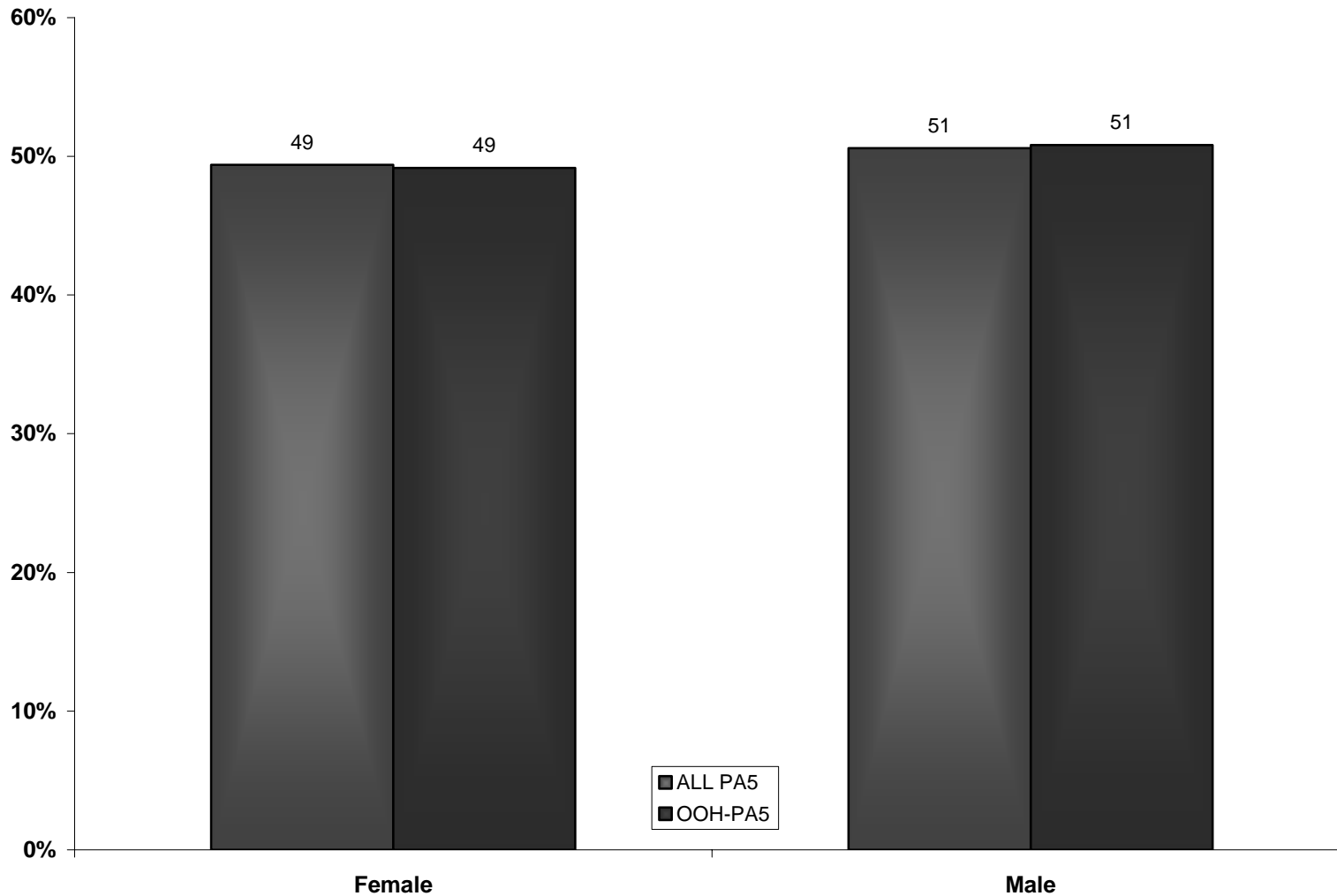
Program Area 5 - Age



Note: "ALL PA5" include in-home and OOH, while the "OOH-PA5" category does not include in-home clients.

Colorado's Out of Home Population by Program Area 5
July 1, 2007 - June 30, 2008
(SFY 2008)

Program Area 5 - Gender

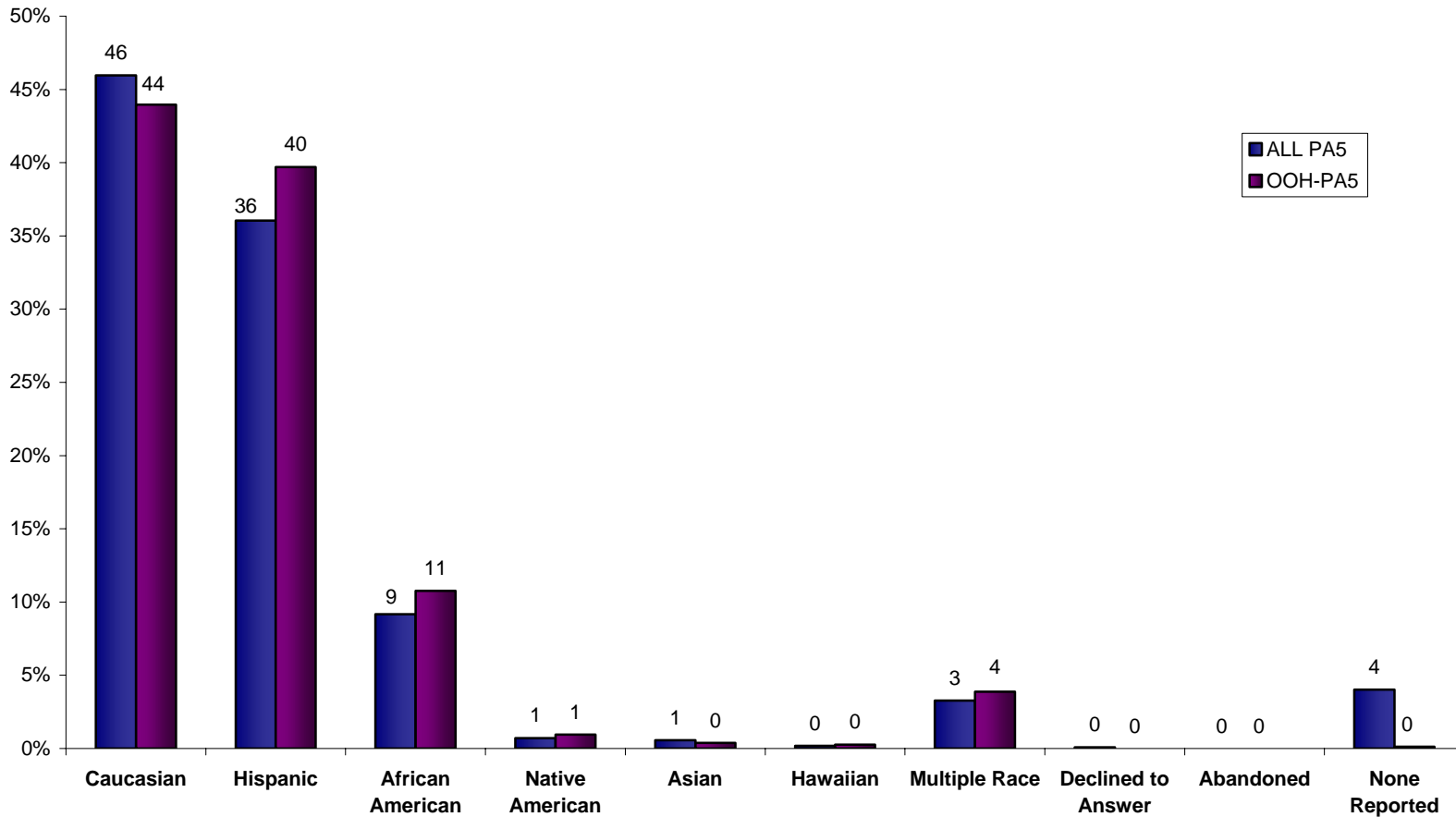


Note: "ALL PA5" include in-home and OOH, while the "OOH-PA5" category does not include in-home clients.

Colorado's Out of Home Population by Program Area 5 July 1, 2007 - June 30, 2008 (SFY 2008)

Program Area 5 - Race/Ethnicity

Federal rules require that caseworkers must ask parents and children what race they identify with. Therefore, there may be clients with missing data as they declined to disclose their race.



Note: "ALL PA5" include in-home and OOH, while the "OOH-PA5" category does not include in-home clients.