

Types of Companies...

Pikes Peak Area

Hot Growth Prospects

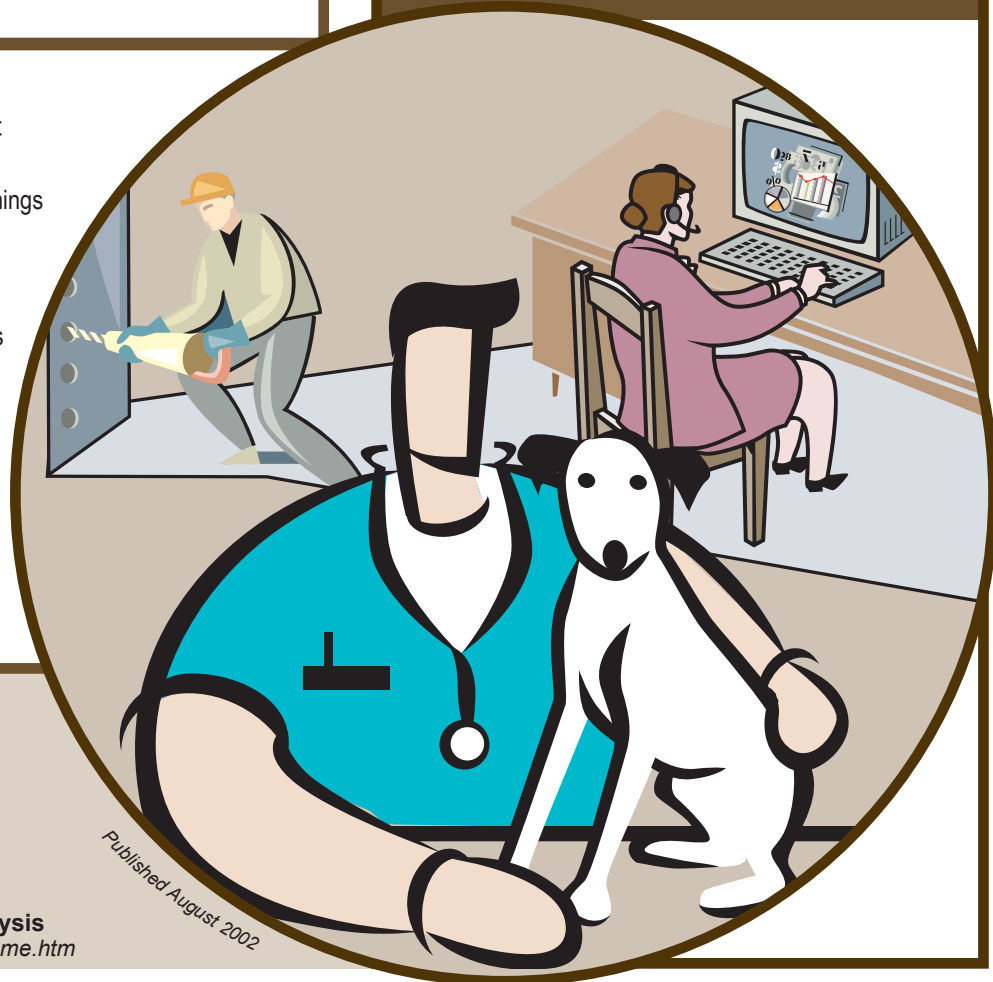
Requiring On-the-Job Training

Expected to add *many* more jobs than average:

- | | | | |
|---------------------------------------|--|---|---|
| * Computer & Data Processing Services | * Doctors Offices | * Local Government | * Dentists Offices |
| * Elementary & Secondary Schools | * Fire, Marine, & Casualty Insurance | * Hotels & Motels | * Nursing & Personal Care Facilities |
| * Business Services | * Electronic Components, Manufacturing | * Home Health Care Services | * Electrical Work |
| * Personnel Supply Services | * Religious Organizations | * Plumbing, Heating, & Air Conditioning | * Individual & Family Social Services |
| * Telephone Communications | * Hospitals | * Child Day Care Services | * Research & Testing Services |
| * Amusement & Recreation Services | * Building Services | | * Lumber & Other Building Materials, Retail Trade |
| | | | * Residential Care Facilities |

Expected to add more jobs than average:

- | | | |
|--|---|---|
| * Management & Public Relations Services | * Trucking & Courier Services Except Air | * Restaurants, Bars, & Fast Food Establishments |
| * Concrete Work | * Hardware, Plumbing, & Heating Equipment | * Furniture & Home Furnishings Stores |
| * New & Used Car Dealers | * Mortgage Bankers & Brokers | * Special Trade Contractors |
| * Automotive Repair Shops | * Credit Unions | * Equipment Rental & Leasing |
| * Carpentry & Floor Work | * Automotive Rentals, No Drivers | * Medical Instruments & Supplies |
| * Real Estate Agents & Managers | * Cable Television Services | * Roofing, Siding, & Sheet Metal Work |
| * Residential Building Construction | * Highway & Street Construction | * Landscape & Garden Services |
| * General Health & Allied Services | * Automotive Services Except Repair | |
| * Masonry, Stonework, Tile Setting, & Plastering | * Federal Government | |



This analysis is based on the *Colorado Springs Occupational Projections, 1998-2008* and includes those occupations for which on-the-job training (short-term, moderate or long-term) is required for entry. All industries and occupations listed are expected to experience above average growth over the next few years when compared with all other industries and occupations within the scope of the original report.

For further information on occupational projections, please visit the Colorado Springs Occupational Projections web site:
www.coworkforce.com/LMI/oeo/CoSpgs/Spgs9808.htm
 Or, contact us at (303) 318-8890.

Labor Market Information
www.coworkforce.com/lmi/
Workforce Research and Analysis
www.coworkforce.com/LMI/wra/home.htm

Published August 2002



Occupations...

Expected to add *many* more jobs than average:

- * Door-to-Door Telemarketers & Related Workers
- * Building Cleaning Except Private
- * General Office Clerks

- * Guards
- * Customer Service Repairers
- * Carpenters
- * Nursing Aides, Orderlies, & Attendants
- * General Office & Administrative Support Workers
- * Assemblers & Fabricators Except Mechanical & Electrical
- * Electricians
- * Electronic Semiconductor Processors

- * Adjustment Clerks
- * Hand Packers & Packagers
- * Athletes, Coaches, Umpires, & Related Workers
- * Precision Production Occupations
- * General Service Supervisors
- * Secretaries Except Legal or Medical
- * Home Health Aides
- * Construction & Extraction Supervisors
- * Landscaping & Groundskeeping Laborers
- * Counter & Rental Clerks
- * Teacher Aides & Educational Assistants
- * Maids & Housekeeping Cleaners
- * Painters & Paperhangers
- * General Maintenance Repairers
- * Sales Representatives, Manufacturing, & Wholesale
- * Teacher Aides & Educational Assistants

- * Office & Administrative Support Supervisors
- * Retail Salespeople
- * Blue-Collar Workers Supervisors
- * Marketing & Sales Supervisors
- * Janitors & Cleaners



- * Child Care Workers
- * Food & Beverage Service Occupations
- * Reception & Information Clerks
- * Cashiers

- * Truck Drivers, Light Delivery
- * Truck Drivers, Heavy & Tractor Trailer
- * General Service Supervisors
- * Farming, Fishing, & Forestry Workers
- * Helpers, Laborers, & Movers



Detailed occupation descriptions can be found at: www.bls.gov/oco

For information on applying for these and similar positions, please visit your local Workforce Center online at: www.coworkforce.com/EMP/WFCs.asp

Expected to add *more* jobs than average:

- * Plumbers, Pipefitters, & Steamfitters
- * General Hand Workers
- * Stockroom & Warehouse Stock Clerks
- * Dental Assistants
- * Medical Assistants
- * General Service Workers
- * Heating, Air Conditioning & Refrigeration Mechanics
- * Construction Trades Helpers
- * Business Services Sales Agents
- * Telephone & Cable TV Installers & Repairers
- * Amusement & Recreation Attendants
- * Social Services Assistants

- * Bookkeeping, Accounting, & Auditing Clerks
- * General Sales & Related Workers
- * Laborers & Freight, Stock, & Material Movers
- * Retail Salespeople
- * Roofers
- * Packaging & Filling Machine Operators
- * Waiters & Waitresses
- * School Bus Drivers
- * Taxi Drivers & Chauffeurs



- * General Freight & Stock Movers
- * First Line Supervisors of Mechanics & Repairers

- * Guides
- * Cleaners of Vehicles & Equipment
- * Advertising Sales Agents
- * Sheet Metal Workers
- * Billing & Posting Clerks
- * Police Patrol Officers
- * Bill & Account Collectors
- * Excavation & Loading Machine Operators
- * Insurance Adjusters
- * Sheet Metal Duct Installers
- * Correctional Officers

