

# Occupations...

## Expected to add *many* more jobs than average:

- \* Health Practitioners, Technicians, & Related
- \* Engineers
- \* Computer Engineers
- \* Systems Analysts
- \* Computer Support Specialists
- \* Secondary School Teachers
- \* General Education Administrators
- \* Registered Nurses
- \* General Managers & Top Executives
- \* Elementary School Teachers
- \* General Computer Scientists
- \* Computer Programmers
- \* Special Education Teachers
- \* General Management Support Workers
- \* Preschool Teachers
- \* Automotive Mechanics & Service Technicians
- \* General Professional & Paraprofessional Technicians
- \* Engineering, Natural Sciences, Computer & Information Systems Managers
- \* Physicians & Surgeons
- \* Electrical & Electronics Engineers
- \* Engineering Technicians & Technologists
- \* Instructional Coordinators
- \* Accountants & Auditors

# Pikes Peak Area

# Hot Growth Prospects

Requiring Higher Education for Entry

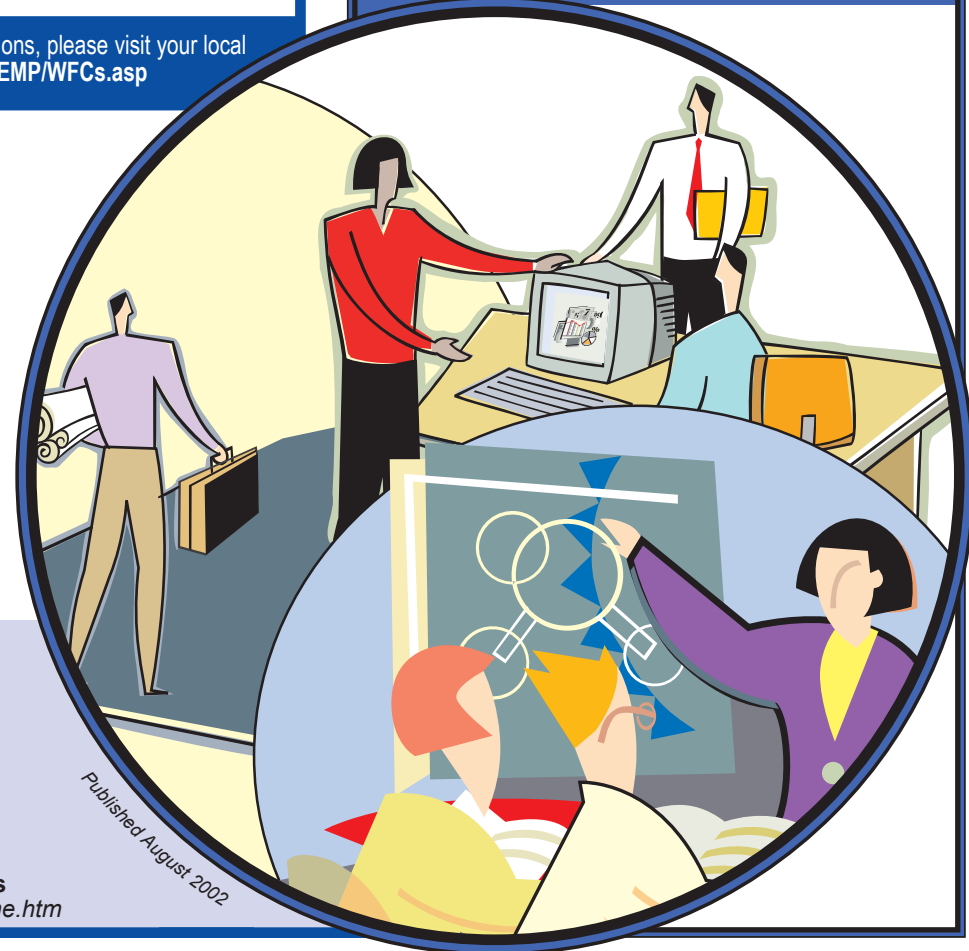
Detailed occupation descriptions can be found at: [www.bls.gov/oco](http://www.bls.gov/oco)



For information on applying for these and similar positions, please visit your local Workforce Center online at: [www.coworkforce.com/EMP/WFCs.asp](http://www.coworkforce.com/EMP/WFCs.asp)

## Expected to add *more* jobs than average:

- \* Dental Hygienists
- \* Financial Managers
- \* Insurance Sales Agents
- \* Writers & Editors
- \* Management Analysts
- \* Construction Managers
- \* Securities, Commodities, & Financial Services Sales Agents
- \* Medical & Psychiatric Social Workers
- \* Advertising, Marketing, Promotions, Public Relations, & Sales Managers
- \* Database Administrators
- \* Licensed Practical & Vocational Nurses
- \* Education Administrators
- \* General Health Professionals & Paraprofessionals
- \* Lawyers
- \* Social Workers Except Medical & Psychiatric
- \* General Engineers
- \* College & University Faculty
- \* Human Resources, Training & Labor Relations
- \* Loan Counselors & Officers
- \* Medical & Health Services Managers
- \* Insurance Underwriters
- \* Travel Agents
- \* Artists & Commercial Artists

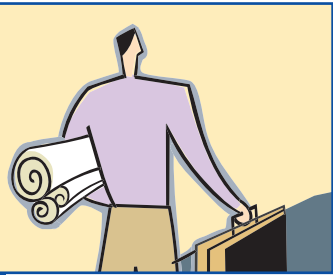


**Labor Market Information**

[www.coworkforce.com/lmi/](http://www.coworkforce.com/lmi/)

**Workforce Research and Analysis**

[www.coworkforce.com/LMI/wra/home.htm](http://www.coworkforce.com/LMI/wra/home.htm)



# Types of Companies...

*Expected to add **many** more jobs than average:*

- \* Computer & Data Processing Services
- \* Elementary & Secondary Schools
- \* Business Services
- \* Personnel Supply Services
- \* Telephone Communications



- \* Amusement & Recreation Services
- \* Doctors Offices
- \* Fire, Marine, & Casualty Insurance
- \* Electronic Components, Manufacturing
- \* Religious Organizations

- \* Hospitals
- \* Building Services
- \* Local Government
- \* Hotels & Motels
- \* Home Health Care Services
- \* Plumbing, Heating, & Air Conditioning
- \* Child Day Care Services



- \* Dentists Offices
- \* Nursing & Personal Care Facilities
- \* Electrical Work
- \* Individual & Family Social Services
- \* Research & Testing Services
- \* Lumber & Other Building Materials, Retail Trade
- \* Residential Care Facilities

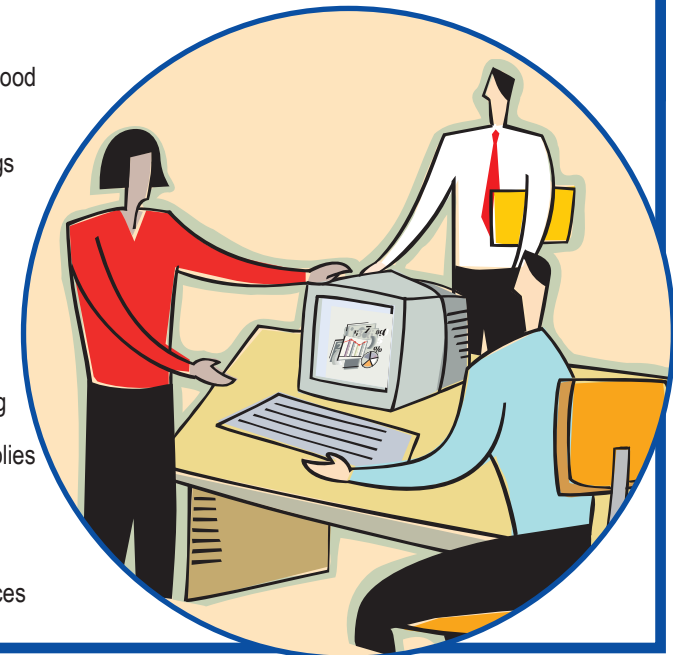
*Expected to add more jobs than average:*

- \* Management & Public Relations Services
- \* Concrete Work
- \* New & Used Car Dealers
- \* Automotive Repair Shops
- \* Carpentry & Floor Work
- \* Real Estate Agents & Managers
- \* Residential Building Construction
- \* General Health & Allied Services
- \* Masonry, Stonework, Tile Setting, & Plastering
- \* Trucking & Courier Services Except Air
- \* Hardware, Plumbing, & Heating Equipment
- \* Mortgage Bankers & Brokers



- \* Credit Unions
- \* Automotive Rentals, No Drivers

- \* Cable & Other Pay TV Services
- \* Highway & Street Construction
- \* Automotive Services Except Repair
- \* Federal Government
- \* Restaurants, Bars, & Fast Food Establishments
- \* Furniture & Home Furnishings Stores
- \* Special Trade Contractors
- \* Equipment Rental & Leasing
- \* Medical Instruments & Supplies
- \* Roofing, Siding, & Sheet Metal Work
- \* Landscape & Garden Services



This analysis is based on the *Colorado Springs Occupational Employment Outlook, 1998-2008* and reflects only those occupations requiring higher education for entry. Higher education here includes vocational training/certification as well as 2-year, bachelor's and advanced degrees. All industries and occupations listed are expected to experience above average growth over the next few years when compared with all other industries and occupations within the scope of the original report.

For further information on occupational projections, please visit the Colorado Springs Occupational Employment Outlook web site:

[www.coworkforce.com/LMI/oeo/CoSpgs/Spgs9808.htm](http://www.coworkforce.com/LMI/oeo/CoSpgs/Spgs9808.htm)  
Or, contact us at (303) 318-8890.