

Occupations...

*Expected to add **many** more jobs than average:*

- * Engineers
- * Computer Support Specialists
- * Health Practitioners Technicians, & Related
- * Systems Analysts
- * General Managers & Top Executives
- * General Education Administrators
- * Engineers, Natural Scientists, & Computer Information Systems Managers
- * General Management Support Workers
- * Securities, Commodities, & Financial Services Sales Agents
- * Registered Nurses
- * Aerospace Engineers
- * Advertising, Marketing, Promotions, Public Relations, & Sales Managers
- * General Religious Workers
- * College & University Faculty
- * General Professional & Paraprofessional Technicians
- * Financial Managers
- * Construction Managers
- * Automotive Mechanics & Service Technicians
- * Electrical & Electronics Engineers
- * Engineering Technicians & Technologists
- * Secondary School Teachers
- * General Engineers
- * Accountants & Auditors

Detailed occupation descriptions can be found at: www.bls.gov/oco



For information on applying for these and similar positions, please visit your local Workforce Center online at: www.coworkforce.com/EMP/WFCs.asp

*Expected to add **more** jobs than average:*

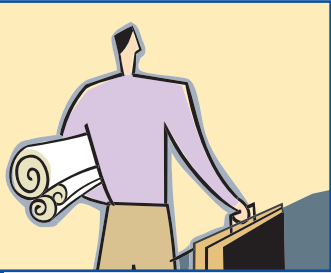
- * Elementary School Teachers
- * General Health Professionals & Paraprofessionals
- * Database Administrators
- * Artists & Commercial Artists
- * Real Estate Sales Agents
- * Special Education Teachers
- * Designers
- * Writers & Editors
- * Purchasing Agents
- * Financial Specialists
- * Loan Counselors & Officers
- * Paralegals & Legal Assistants
- * Civil Engineers
- * Medical & Psychiatric Social Workers
- * Legal Secretaries
- * General Teachers & Instructors
- * Electrical & Electronic Technicians
- * Instructional Coordinators
- * Travel Agents
- * Property, Real Estate, & Community Association Managers
- * Human Resources, Training, & Labor Relations
- * Management Analysts
- * Lawyers
- * Administrative Services Managers
- * General Social Workers

Denver Metro

Hot Growth Prospects

Requiring Higher Education for Entry





Types of Companies...

*Expected to add **many** more jobs than average:*

- * Computer & Data Processing Services
- * Restaurants, Bars, & Fast Food Establishments
- * Personnel Supply Services
- * Business Services
- * Elementary & Secondary Schools
- * Engineering, Architectural, & Surveying Services
- * Doctors Offices



- * Management & Public Relations Services
- * Trucking & Courier Services Except Air
- * Telephone Communications
- * Mailing, Copying, Commercial Art, & Photography Services
- * Local Government
- * Mortgage Bankers & Brokers
- * Building Services

- * Residential Building Construction
 - * Home Health Care Services
- 
- * Cable Television Services
 - * Landscape & Garden Services
 - * Plumbing, Heating, & Air Conditioning
 - * Electrical Work
 - * Nursing & Personal Care Facilities
 - * Concrete Work
 - * Individual & Family Social Services

- * Masonry, Stonework, Tile Setting, & Plastering
- * Misc. Shopping Goods Stores
- * Colleges, Universities, Professional Schools, & Junior Colleges
- * Radio, Television, Consumer Electronics, & Music Stores
- * Carpentry & Floor Work
- * Automotive Repair Shops
- * Electrical Goods
- * Lumber & Construction Materials, Wholesale Trade

Expected to add more jobs than average:

- * Real Estate Agents & Managers
- * New & Used Car Dealers
- * Schools & Educational Services
- * Residential Care Facilities
- * Child Day Care Services
- * Special Trade Contractors
- * Department Stores
- * Amusement & Recreation Services
- * Hotels & Motels
- * Lumber & Other Building Materials, Retail Trade
- * Electronic Components, Manufacturing
- * Dentists Offices
- * Retail Stores
- * Equipment Rental & Leasing
- * Grocery Stores

- 
- * Nonresidential Building Construction
 - * Insurance Agents, Brokers, & Service
 - * Heavy Construction
 - * Furniture & Home Furnishings Stores
 - * Functions Closely Related to Banking
 - * Research & Testing Services
 - * Security & Commodity Services
 - * Automotive Services Except Repair
 - * General Health & Allied Services
 - * Misc. Nondurable Goods
 - * Investment Advice Services
 - * Security Brokers & Dealers
 - * Automotive Rentals, No Drivers

- * Producers, Orchestras, & Entertainers
- * Roofing, Siding, & Sheet Metal Work
- * Professional & Commercial Equipment & Supplies, Wholesale Trade



This analysis is based on the *Denver Occupational Employment Outlook, 1998-2008* and reflects only those occupations requiring higher education for entry. Higher education here includes vocational training/certification as well as 2-year, bachelor's and advanced degrees. All industries and occupations listed are expected to experience above average growth over the next few years when compared with all other industries and occupations within the scope of the original report.

For further information on occupational projections, please visit the Denver Occupational Employment Outlook web site:

www.coworkforce.com/LMI/oeo/DenverMetro/dm9808.htm
Or, contact us at (303) 318-8890.