

Occupations...

Expected to add *many* more jobs than average:

- * Engineers
- * Health Practitioners, Technicians, & Related
- * Computer Support Specialists
- * General Managers & Top Executives
- * Systems Analysts
- * Computer Engineers
- * General Education Administrators
- * Secondary School Teachers
- * Registered Nurses
- * Computer Programmers
- * Engineering Technicians & Technologists
- * Computer & Information Systems Managers
- * General Computer Scientists
- * Elementary School Teachers
- * General Management Support Workers
- * Automotive Mechanics & Service Technicians
- * Accountants & Auditors
- * Electrical & Electronics Engineers
- * General Professional & Paraprofessional Technicians
- * Construction Managers
- * General Engineers
- * Advertising, Marketing, Promotions, Public Relations, & Sales Managers
- * Financial Managers
- * Securities, Commodities, & Financial Services Sales Agents
- * College & University Faculty
- * Special Education Teachers
- * Civil Engineers
- * Database Administrators

Detailed occupation descriptions can be found at: www.bls.gov/oco



For information on applying for these and similar positions, please visit your local Workforce Center online at: www.coworkforce.com/EMP/WFCs.asp

Expected to add *more* jobs than average:

- * Artists & Commercial Artists
- * General Social Workers
- * Loan Counselors & Officers
- * General Health Professionals & Paraprofessionals
- * Human Resources, Training, & Labor Relations
- * Designers
- * Purchasing Agents
- * Financial Specialists
- * Writers & Editors
- * Physicians & Surgeons
- * Electrical & Electronic Technicians & Technologists
- * Medical & Psychiatric Social Workers
- * Administrative Services Managers
- * Management Analysts
- * Real Estate Sales Agents
- * Hairdressers, Hairstylists, & Cosmetologists
- * Education Administrators
- * Residential Counselors
- * Property, Real Estate, & Community Association Managers
- * Mechanical Engineers
- * Clergy
- * Preschool Teachers
- * General Teachers & Instructors
- * Licensed Practical & Vocational Nurses
- * Cost Estimators
- * Insurance Sales Agents
- * General Engineering Technicians & Technologists

Labor Market Information

www.coworkforce.com/lmi/

Workforce Research and Analysis

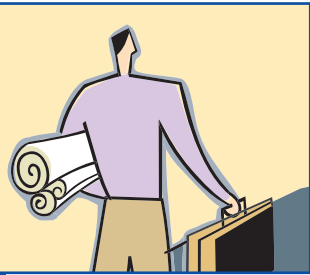
www.coworkforce.com/LMI/wra/home.htm

Colorado

Hot Growth Prospects

Requiring Higher Education for Entry





Types of Companies...

*Expected to add **many** more jobs than average:*

- * Computer & Data Processing Services
 - * Restaurants, Bars, & Fast Food Establishments
 - * Elementary & Secondary Schools
 - * Business Services
 - * Personnel Supply Services
 - * Plumbing, Heating, & Air Conditioning
 - * Amusement & Recreation Services
 - * Department Stores
- 📎 📎 📎
- * Local Government
 - * Religious Organizations
 - * Telephone Communications
 - * Engineering, Architectural, & Surveying Services

- * Masonry, Stonework, Tile Setting, & Plastering
 - * Cable Television Services
 - * Doctors Offices
 - * Hotels & Motels
 - * Home Health Care Services
 - * Individual & Family Social Services
 - * Electronic Components, Manufacturing
- 📎 📎 📎
- * Landscape & Garden Services
 - * General Contractors
 - * Electrical Work
 - * Carpentry & Floor Work
 - * Concrete Work
 - * Computer & Office Equipment, Manufacturing

- * U.S. Postal Service
- * Air Transportation
- * Sanitary Services
- * Lumber & Other Building Materials, Retail Trade
- * Electrical Appliances & Parts, Wholesale Trade
- * Lumber & Construction Materials, Wholesale Trade
- * Grocery Stores
- * New & Used Car Dealers
- * Furniture & Home Furnishings Stores
- * Radio, Television, Consumer Electronics, & Music Stores
- * Commercial Banks
- * Security Brokers & Dealers
- * Fire, Marine, & Casualty Insurance

- * Insurance Agents, Brokers, & Service
- * Real Estate Agents & Managers
- * Mailing, Copying, Commercial Art, & Photography Services
- * Pest Control & Building Cleaning & Maintenance Services
- * Equipment Rental & Leasing
- * Automotive Repair Shops
- * Dentists Offices
- * Nursing & Personal Care Facilities
- * Colleges, Universities, Professional Schools, & Junior Colleges
- * Residential Care Facilities
- * Management & Public Relations Services
- * Federal Government
- * State Government

Expected to add more jobs than average:

- * Heavy Construction
- * Local & Suburban Passenger Transportation
- * Professional & Commercial Equipment & Supplies, Wholesale Trade
- * Groceries, Wholesale Trade
- * Auto & Home Supply Stores
- * Gas Stations
- * Mortgage Bankers & Brokers
- * Investment Advice Services
- * Child Day Care Services

- 📎 📎 📎
- * Veterinary Services
 - * Roofing, Siding, & Sheet Metal Work
 - * Concrete, Gypsum, & Plaster Products, Manufacturing
 - * Accident, Health Insurance, & Medical Service Plans
 - * Car Washes, Emissions Testing, Towing, & Other Misc. Car Services
 - * Accounting, Auditing, & Bookkeeping Services



This analysis is based on the *Colorado Occupational Employment Outlook, 1998-2008* and reflects only those occupations requiring higher education for entry. Higher education here includes vocational training/certification as well as 2-year, bachelor's and advanced degrees. All industries and occupations listed are expected to experience above average growth over the next few years when compared with all other industries and occupations within the scope of the original report.

For further information on occupational projections, please visit the Colorado Occupational Employment Outlook web site:

www.coworkforce.com/LMI/oeo/oeo.htm

Or, contact us at (303) 318-8890.