

MIT4

		12ft			
Receptor					
MIT4a	83	1	8.1	8.1	
	84	1	8.1	8.1	
	86	1	7.7	7.7	23.9
MIT4b2-4	85	1	<3	0	
	87	1	7.3	7.3	
	88	2	4.9	4.9	
	92	2	<3	0	12.2

		Wall Ht	Wall Length	Unit Cost	Decibel Re	CBI
MIT4a		12	1110	30	23.9	\$16,720
MIT4b2-4		12	475	30	17.1 12.2	\$14,016
MIT4b1		12	585	30*		

*Could not achieve 5 dBA minimum at 1 receptor

2002 Guidelines

*18
17.1*

\$10,000

RESULTS: SOUND LEVELS

CDOT_filename:SEISNA
jfs 110509 2030traffic 4f reeval;220coun

RESU, TS: SOUND LEVELS

PROJECT/CONTRACT:

RUN:

BARRIER DESIGN:

ATMOSPHERICS:

Supplemental EIS US160/550 Grandview

MIT4

INPUT HEIGHTS

68 deg F, 50% RH

7.7

Handwritten notes: $a = 110$ ft, $b = 58.5$ ft, $bd = 475$ ft. Includes various other calculations and references to 'Grandview' and 'TNN 2.5'.

Supplemental EIS US160/550 Grandview

9 May 2011

TNM 2.5

Calculated with TNM 2.5

Average pavement type shall be used unless a State highway agency substantiates the use of a different type with approval of FHWA.

Receiver Name	#DUs	Existing LAeq1h	No Barrier		Increase over existing		Type Impact	With Barrier		Calculated minus Goal		
			Calculated LAeq1h	dBA	Crit'n	Sub'l Inc		Calculated LAeq1h	dBA		Calculated	Goal
81	2	69.3	69.4	66	0.1	10	Snd Lvl	69.4	0.0	5	-5.0	
82	1	70.4	70.3	66	-0.1	10	Snd Lvl	70.3	0.0	5	-5.0	
84	1	69.2	61.1	66	-8.1	10	---	61.1	0.0	5	-5.0	
85	1	67.1	64.6	66	-2.5	10	---	64.6	0.0	5	-5.0	
87	1	70.3	63.0	66	-7.3	10	---	63.0	0.0	5	-5.0	
88	1	71.8	66.9	66	-4.9	10	Snd Lvl	66.9	0.0	5	-5.0	
C91	1	63.7	62.1	66	-1.6	10	---	62.1	0.0	5	-5.0	
92	2	73.8	72.9	66	-0.9	10	Snd Lvl	72.9	0.0	5	-5.0	
C116	1	64.5	64.4	71	-0.1	10	---	64.4	0.0	5	-5.0	
83	1	69.1	61.0	66	-8.1	10	---	61.0	0.0	5	-5.0	
86	1	69.2	61.5	66	-7.7	10	---	61.5	0.0	5	-5.0	
C89	1	68.6	73.8	71	5.2	10	Snd Lvl	73.8	0.0	5	-5.0	
93	1	63.9	62.9	66	-1.0	10	---	62.9	0.0	5	-5.0	
94	1	70.7	70.4	66	-0.3	10	Snd Lvl	70.4	0.0	5	-5.0	
95 modified after ROW	1	75.2	73.5	66	-1.7	10	Snd Lvl	73.5	0.0	5	-5.0	
96	1	73.9	73.4	66	-0.5	10	Snd Lvl	73.4	0.0	5	-5.0	
97	1	70.6	71.1	66	0.5	10	Snd Lvl	71.1	0.0	5	-5.0	
98	1	69.0	68.4	66	-0.6	10	Snd Lvl	68.4	0.0	5	-5.0	
102	1	67.9	67.0	66	-0.9	10	Snd Lvl	67.0	0.0	5	-5.0	
103 church	1	69.1	68.0	66	-1.1	10	Snd Lvl	68.0	0.0	5	-5.0	
104	1	66.4	65.4	66	-1.0	10	---	65.4	0.0	5	-5.0	
106	1	69.5	68.5	66	-1.0	10	Snd Lvl	68.5	0.0	5	-5.0	
107	5	68.7	67.6	66	-1.1	10	Snd Lvl	67.6	0.0	5	-5.0	

RESULTS: SOUND LEVELS

																				Supplemental EIS US160/550 Grandview		
																				Min	Avg	Max
108	155	1	65.3	64.3	66	-1.0	10	---	64.3	0.0	5	-5.0										
109	156	1	67.6	66.8	66	-0.8	10	Snd Lvl	66.8	0.0	5	-5.0										
110	157	1	64.5	63.8	66	-0.7	10	---	63.8	0.0	5	-5.0										
112	158	1	65.7	64.7	66	-1.0	10	---	64.7	0.0	5	-5.0										
90c	184	1	71.0	71.5	66	0.5	10	Snd Lvl	71.5	0.0	5	-5.0										
105	187	1	67.3	66.3	66	-1.0	10	Snd Lvl	66.3	0.0	5	-5.0										
cemetery	192	1	57.7	57.7	66	0.0	10	---	57.7	0.0	5	-5.0										
115	195	1	56.6	56.0	66	-0.6	10	---	56.0	0.0	5	-5.0										
107b	200	1	70.5	69.4	66	-1.1	10	Snd Lvl	69.4	0.0	5	-5.0										
93a	202	1	64.6	63.2	66	-1.4	10	---	63.2	0.0	5	-5.0										
93b	203	1	60.8	59.9	66	-0.9	10	---	59.9	0.0	5	-5.0										
93c	204	1	60.5	59.3	66	-1.2	10	---	59.3	0.0	5	-5.0										
81a	206	1	64.4	64.5	66	0.1	10	---	64.5	0.0	5	-5.0										
81b	207	1	61.9	61.9	66	0.0	10	---	61.9	0.0	5	-5.0										
114	215	1	67.4	66.4	66	-1.0	10	Snd Lvl	66.4	0.0	5	-5.0										
Dwelling Units		# DUs	Noise Reduction																			
			Min	Avg	Max																	
			dB	dB	dB																	
All Selected		44	0.0	0.0	0.0																	
All Impacted		25	0.0	0.0	0.0																	
All that meet NR Goal		0	0.0	0.0	0.0																	

INPUT: BARRIERS

Supplemental EIS US160/550 Grandview

9 May 2011
TNM 2.5

CDOT filename:SEISNA
jfs 110509 2030traffic 4f reeval;220cou

INPUT: BARRIERS

PROJECT/CONTRACT: Supplemental EIS US160/550 Grandview
RUN: MIT4

Barrier Name	Type	Height		Max ft	If Wall \$ per Unit Area	If Berm \$ per Unit Vol.	Top Width ft	Run:Rise ft:ft	Add'l Unit Length \$/ft	Points Name	Coordinates (bottom)			Height at Point ft	Segment			Important Reflec-tions?		
		Min ft	ft								X ft	Y ft	Z ft		Segment In-c-re-ment ft	#Up	#Dn		Struct?	On
Mountain Vista Noise Barrier	W	0.00	99.99	0.00	0.00				0.00	point17	17	2,329,940.8	1,213,440.0	6,920.00	8.00	0.00	0	0		
										point18	18	2,330,143.5	1,213,468.9	6,925.00	8.00	0.00	0	0		
										point19	19	2,330,252.8	1,213,486.4	6,934.00	8.00	0.00	0	0		
										point20	20	2,330,354.6	1,213,521.8	6,932.00	8.00	0.00	0	0		
MIT4b-1 Along US160	W	0.00	99.99	0.00	0.00				0.00	point24	24	2,327,219.0	1,212,902.8	6,845.00	12.00	0.00	0	0		
										point25	25	2,327,478.0	1,212,901.9	6,845.00	12.00	0.00	0	0		
										point26	26	2,327,726.8	1,212,915.6	6,848.00	12.00	0.00	0	0		
										point27	27	2,327,835.8	1,212,926.0	6,850.00	12.00	0.00	0	0		
MIT4b 2 along US160	W	0.00	99.99	0.00	0.00				0.00	point28	28	2,328,164.0	1,212,964.8	6,890.00	12.00	0.00	0	0		
										point29	29	2,328,272.2	1,212,981.6	6,890.00	12.00	0.00	0	0		
MIT4b 3	W	0.00	99.99	0.00	0.00				0.00	point30	30	2,328,313.8	1,212,993.9	6,890.00	12.00	0.00	0	0		
										point31	31	2,328,626.5	1,213,046.8	6,890.00	12.00	0.00	0	0		
MIT4b 4 along US160	W	0.00	99.99	0.00	0.00				0.00	point32	32	2,328,673.2	1,213,055.4	6,890.00	12.00	0.00	0	0		
										point33	33	2,328,830.0	1,213,091.8	6,893.00	12.00	0.00	0	0		
MIT4a along US160	W	0.00	99.99	0.00	0.00				0.00	point39	39	2,327,747.2	1,212,788.8	6,860.00	12.00	0.00	0	0		
										point40	40	2,327,942.5	1,212,819.8	6,860.00	12.00	0.00	0	0		
										point43	43	2,328,089.2	1,212,836.8	6,865.00	12.00	0.00	0	0		
										point41	41	2,328,281.5	1,212,860.8	6,890.00	12.00	0.00	0	0		
										point42	42	2,328,654.5	1,212,935.4	6,890.00	12.00	0.00	0	0		



93

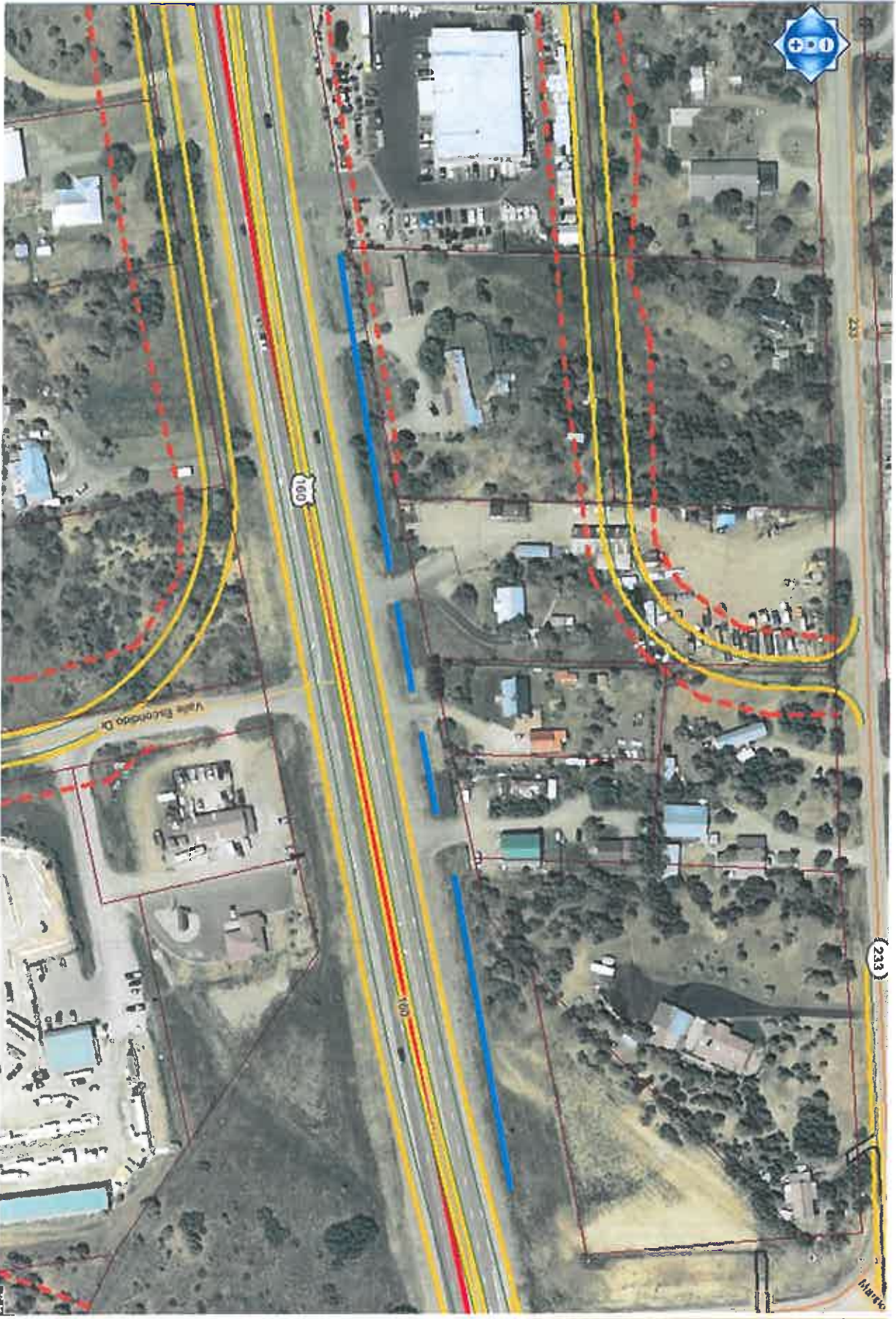
480

585

585



100ft



(233)

Map