

# STATEWIDE

## Annual Economic Impact

### Jobs



Jobs supported by the operation and development of airports, by off-airport air visitor spending, and by off-airport companies that rely on air cargo services to ship their goods.

**265,700**

### Payroll



Annual employee payroll associated with aviation supported jobs.

**\$12.6 billion**

### Output



Output or total annual economic activity which is comparable to the spending required to purchase goods and services to support operations for all activities considered in this study.

**\$36.7 billion**

### Taxes



Local and state tax revenues derived directly from airport-supported activities both on and off the airports, including sales taxes, income taxes, and fuel excise taxes.

**\$1.1 billion**

# COLORADO

## Statewide Benefits from Aviation

Airports in Colorado are important underpinnings for state and local economies. Airports not only provide safe and convenient travel options but as shown in this study, they create employment opportunities and contribute to state and local tax revenues. Aside from the jobs, payroll and annual economic activity that airports in Colorado support, during fire season, airports are essential to the state's forest fire fighting efforts. Doctors routinely use Colorado airports to provide medical services for residents in less densely populated areas of the state. Patients are often transported by air in emergency situations. During Colorado's catastrophic flood in September 2013, airports played an essential role in rescuing residents who could not otherwise have been reached.

The continued maintenance and development of Colorado's public-use airports is essential. For Colorado to support the travel needs of its businesses, residents, and visitors and for the state to remain at the forefront of industries such as energy and tourism, airports are essential. Annually, airports make significant economic contributions, while at the same time the airports help to improve the quality of life for all who reside in the state.

For more information on this airport's specific annual economic impacts or on the CDOT Statewide Aviation Economic Impact Study please contact:

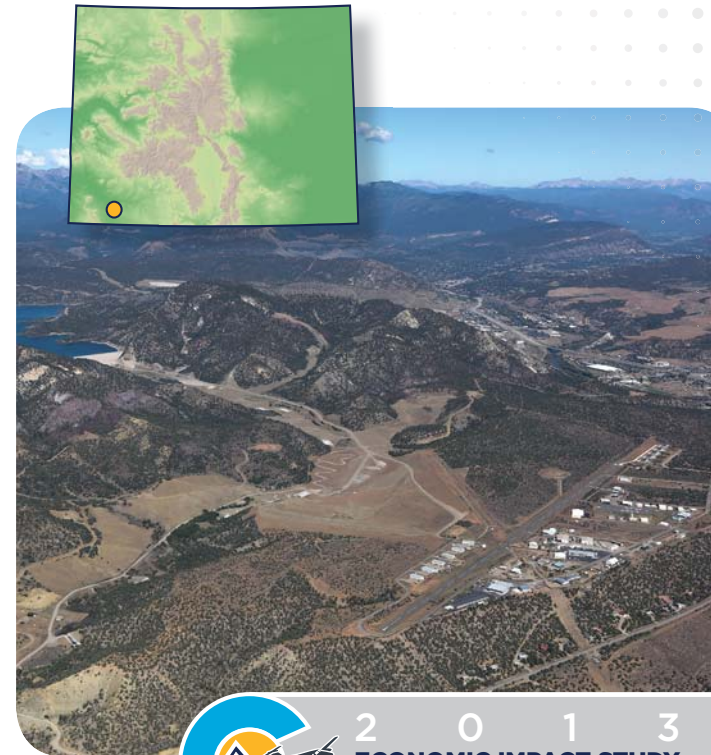


Colorado Department of Transportation  
 Division of Aeronautics  
 5126 Front Range Parkway  
 Watkins, Colorado 80137  
 303-512-5250  
[www.Colorado-Aeronautics.org](http://www.Colorado-Aeronautics.org)

## The Economic Impact of

# ANIMAS AIRPARK

### Durango, Colorado



# COLORADO

## Statewide Benefits from Aviation

Colorado is served by a diverse system of airports. These airports accommodate the needs of Colorado businesses and residents, as well as visitors who come to Colorado to conduct business, attend conventions, and vacation. Airports in Colorado support hundreds of thousands of jobs and contribute billions of dollars in annual economic activity. At the same time, airports and aviation activities are a source of tax revenues.

Important links between airports and the economy were measured in a research project undertaken by the Colorado Department of Transportation's Division of Aeronautics. Similar research efforts were undertaken in 1998, 2003 and 2008, but results from this update and previous studies are not directly comparable. This update to the Colorado Aviation Economic Impact Study found that all of Colorado's airports, including Denver International, contribute \$36.7 billion in output to Colorado's economy and support 265,700 jobs. These employees earn \$12.6 billion. In total, Colorado's airports contribute \$1.1 billion in state and local tax revenues.

These annual economic benefits include "multiplier" effects, which capture the recycling of initial economic impacts in the economy. Successive rounds of spending associated with the economic activities of airport operators, airport tenants, capital investment, air visitors and other non-aviation businesses that rely on air cargo, support additional jobs, payroll and economic activity in Colorado. Multiplier impacts are estimated using multipliers that are specific to the state, or to the market area of each study airport. Total statewide and airport-specific impacts are the sum of initial and applicable multiplier impacts.

Prepared by:

ICF SH&E, Inc. with Jviation, EDR Group  
 and KRAMER aerotek, Inc.



# ANIMAS AIRPARK (OOC)

## Annual Economic Impact on the Local Economy

The economic impact of Animas Airpark (OOC) on its local economy was estimated as a part of CDOT's statewide study. The economic contributions of Animas Airpark stem from on-airport activities and off-airport spending by visitors who arrive in Colorado via the airport. The economic contributions of these activities are measured through jobs, associated payroll, and economic output.

### On-Airport Impacts

On-airport activities considered in this study include the administration, operation and maintenance of Animas Airpark as well as the activities of airport tenants that provide aviation services or support the airport's customers. Airport operators routinely undertake improvement projects to maintain or expand infrastructure. The study also identified the economic impact of capital investment spending which supports jobs and payroll in the local economy over each project's duration.

Annual Airport, Tenant and Capital Improvement Economic Impact for Animas Airpark

	Initial	Multiplier Effect	Total
<b>Jobs</b>	9	3	12
<b>Payroll</b>	\$328,000	\$154,000	\$482,000
<b>Output</b>	\$1,053,000	\$480,000	\$1,533,000

### Visitor Impacts

Visitors travel to Colorado on commercial airline flights and general aviation aircraft to conduct business or vacation in the state. Annually, 2,000 visitors arrive in Colorado via Animas Airpark. Some stay only for the day, but others stay longer and have higher spending rates. Air visitors spend money locally on food, lodging, transportation, entertainment and retail purchases. Visitor spending in turn supports jobs and payroll while producing additional economic impacts through multiplier effects.

Annual Visitor Economic Impact for Animas Airpark

	Initial	Multiplier Effect	Total
<b>Jobs</b>	5	2	7
<b>Payroll</b>	\$157,000	\$69,000	\$226,000
<b>Output</b>	\$445,000	\$223,000	\$668,000

### Annual Tax Impacts

The economic activities related to the airport and visitors using the airport generate significant local and state tax revenues. Visitors pay taxes on lodging, rental cars, restaurant meals, and other purchases. Workers whose jobs are supported by airports and visitor spending also pay sales tax and state income taxes. Annual local and state taxes linked to the operation of Animas Airpark total \$82,200.

### Total Economic Impact of Animas Airpark

Over the past five years, the aviation industry has been impacted by increased fuel costs and a lagging U.S. economy. This has resulted in consolidation in the airline industry, fewer new general aviation aircraft being manufactured in the U.S., and an overall reduction in flights. For some Colorado airports, the contraction in aviation demand over the past five years translated into lower economic impacts. In other instances, demand and economic impacts may have increased or remained constant, despite downturns.

Together, airport, tenant, capital improvement and visitor impacts, along with multiplier effects, represent the total economic contribution of Animas Airpark. The airport's economic contribution to the communities it serves is \$2.2 million in output and 19 jobs, with an annual payroll of \$700,000.

### How the Economic Impact of Animas Airpark was Calculated

#### Initial Impact



**Total Impact**

**19 Jobs**   **\$0.7 million Payroll**   **\$2.2 million Output**