

The Republican River Water Conservation District would like to express sincere gratitude to all irrigators in the basin and to the Farm Service Agency. Without their funding and support, Colorado's CREPs would not be possible.

The RRWCD, along with CSU Cooperative Extension and the Colorado Divisions of Wildlife and Water Resources, also wish to thank staff with NRCS and USFWS. Cooperation between these federal and non-federal agencies has been integral in program implementation.

Special thanks to locally and state-elected officials for continued support of the district and its programs. And much deserved appreciation is extended to Colorado's CREP partners and supporters, including the Colorado Department of Agriculture, Pheasants Forever, The Nature Conservancy, Colorado Farm Bureau, Colorado Wheat Growers, Colorado Assoc. of Conservation Districts, Republican River Assoc. of Conservation Districts, Playa Lake Joint Venture, Rocky Mountain Bird Observatory, Environmental Defense Fund, High Plains Land Conservancy, Highline Electric Assoc., Y-W Electric Assoc., Northeast Colorado RC&D, K-C Electric, area ground water management districts, and all who have helped move CREP forward.



Republican River Water Conservation District

410 Main St., Suite 8
Wray, CO 80758
970-332-3552



(303) 866-3581

[www.water.state.co.us/wateradmin/
RepublicanRiver.asp](http://www.water.state.co.us/wateradmin/RepublicanRiver.asp)



Putting Knowledge to Work

Colorado State University
Cooperative Extension

Kit Carson County
719-346-5571
Phillips County
970-854-3616
Washington County
970-345-2287

Sedgwick County
970-474-3479
Logan County
970-522-3200
Lincoln County
719-743-2542

Yuma County
970-332-4151
www.republicanriver.com



Republican River Water Conservation District & CREP



photo www.ncsu.edu

Inside...

**Colorado's Republican River
Conservation Reserve
Enhancement Program**

June 1, 2006

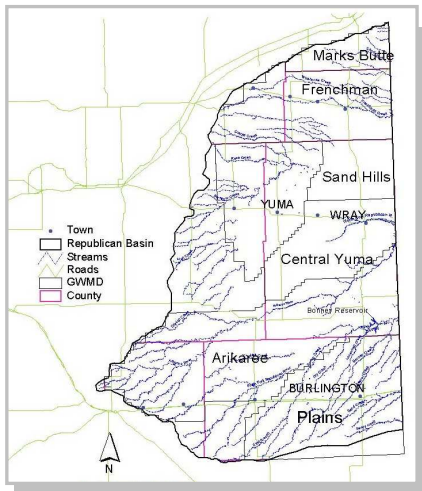


Republican River Water Conservation District

Governor Bill Owens signed into law Senate Bill 04-235, establishing a Republican River Water Conservation District in Phillips and Yuma counties, and those portions of Kit Carson, Lincoln, Logan, Sedgwick, and Washington counties within the Republican River Basin.

The District is empowered to take such actions as are necessary to cooperate with and assist the state of Colorado to carry out the state's duty to comply with the Republican River Compact. The county commissioners of each county, the ground water management districts, and the Colorado Ground Water Commission have appointed the 15 members to the District's board. The new law authorized the District to form a water activity enterprise ("Enterprise") and authorizes several funding mechanisms to enable the District and the Enterprise to help comply with the Compact.

- Water use fees
- Revenue bonds
- Special assessments
- Sales and use tax
- Ad valorem property taxes



District Personnel

Stan Murphy, General Manager
Monica Newton, Administrative Assistant
970-332-3552

Republican River CREP

On April 21, 2006, U.S. Agriculture Secretary Mike Johanns signed two Colorado Conservation Reserve Enhancement Program (CREP) partnerships totalling \$91.6 million.

The 35,000-acre Colorado Republican River CREP, which has been granted funding of \$52.8 million from USDA and \$11.7 million from the Enterprise, will conserve agricultural irrigation water use in the basin by five percent. Permanent water retirement and 14 or 15-year native grass, riparian buffer, and seasonal wetland establishment on up to 30,000 eligible irrigated acres and 5,000 eligible dryland acres will also reduce soil erosion, reduce chemical application, and improve habitat for targeted fish and bird species.

To be eligible, producers must irrigate acres within the District and within FSA's Conservation Priority Area (CPA) that meet both FSA and RRWCD eligibility requirements. The Conservation Priority Area covers all or portions of Kit Carson, Logan, Phillips, Sedgwick, and Yuma Counties.

FSA will make the following payments, as applicable:

- Annual irrigated rent
- Annual dryland rent (dryland pivot corners only)
- Annual maintenance incentive payment
- One-time cost share
- One-time Practice Incentive Payment (CP22)
- One-time Signing Incentive Payment (CP22)
- One-time hydrology restoration cost-share (CP23,CP23a)

REPUBLICAN RIVER CREP - ENTERPRISE PAYMENTS

Payment Type (per acre)	Surface	<1 mi.	<2 mi.	<4 mi.	4+ mi.
Annual RRWCD Rent Pmt	\$ 50	\$ 25	\$ 15	\$ 10	\$ -
Total Water Retire.\$ (Yrs 5,10,15)	\$ 600	\$ 400	\$ 250	\$ 175	\$ 100
Bonus Payment (Yr 1)	\$ 120	\$ 35	\$ 25	\$ 15	\$ 10
RRWCD Water Activity Enterprise Annual Payment Schedule					
Year 1	\$ 170	\$ 60	\$ 40	\$ 25	\$ 10
2	50	25	15	10	-
3	50	25	15	10	-
4	50	25	15	10	-
Permanent water retirement,	5 250	158	98	68	33
no dryland permitted	6 50	25	15	10	-
for 15 years.	7 50	25	15	10	-
	8 50	25	15	10	-
	9 50	25	15	10	-
	10 250	158	98	68	33
	11 50	25	15	10	-
	12 50	25	15	10	-
	13 50	25	15	10	-
	14 50	25	15	10	-
	15 250	159	99	69	34
Total Enterprise Payments	\$ 1,470	\$ 810	\$ 500	\$ 340	\$ 110
Installation Cost Share (Yr 1)*	10%	30%	20%	15%	5%

*Cost Share % based on Conservation Practice and river proximity.

Additional Information

Sign Up begins Monday, June 12

For specifics concerning FSA signup procedures, please contact your administrative FSA office. FSA will provide producers with information packets at signup that will outline the CREP application and enrollment process.

INITIAL ALLOCATION OF IRRIGATED CREP ACRES

County	% of Irrigated Acres in CPA	Proportionate CREP Acres in CPA	Surface Acres	<1 mile Acres	<2 mile Acres	<4 mile Acres	4+ Acres	Total Acres
Kit Carson	31.7%	9,505	250	1,744	1,744	1,744	4,022	9,505
Logan	1.0%	293	0	0	0	0	293	293
Phillips	12.9%	3,870	0	0	0	0	3,870	3,870
Sedgwick	4.4%	1,314	0	0	0	0	1,314	1,314
Yuma	50.1%	15,018	1,250	2,756	2,756	2,756	5,500	15,018
Total		30,000	1,500	4,500	4,500	4,500	15,000	30,000

Colorado High Plains CREP

USDA has also partnered with the Colorado Division of Wildlife and other non-federal organizations to implement a 30,000-acre dryland CREP in Colorado's eastern plains. This CREP will increase populations of ring-necked pheasants and other ground-nesting birds by planting habitat, food plots and vegetative covers on eligible acres.



The High Plains CREP will boost public access and recreational opportunities, such as hunting. USDA will provide \$19.9 million in funding and the Division of Wildlife will add \$5.4 million.