

Fig. 3. Current and historical Gunnison sage-grouse range. See next page for details on numbers found on map.

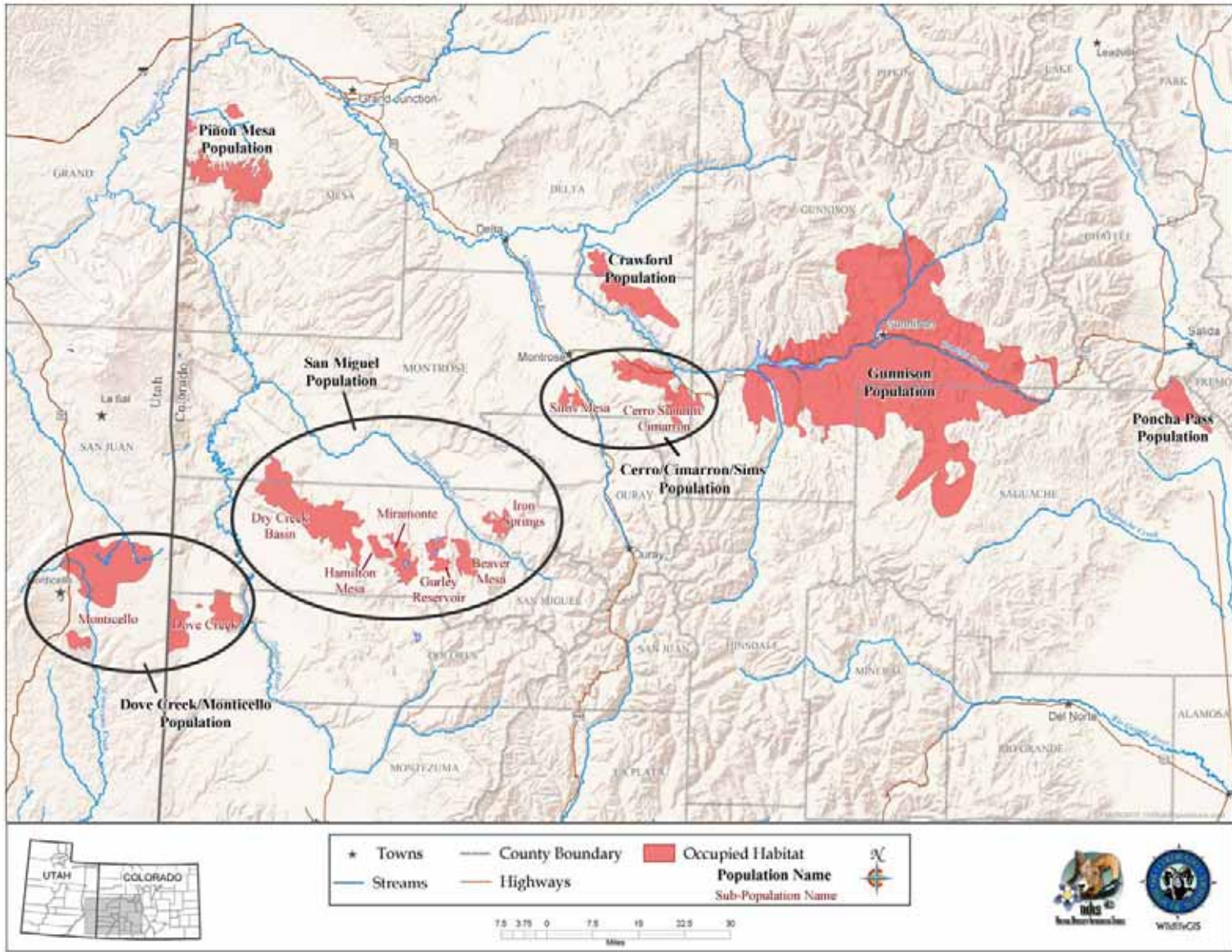


Fig. 4. Locations of current Gunnison sage-grouse populations. The discontinuity in occupied habitat at the state line in the Dove Creek - Monticello area is not entirely a mapping artifact; where there is occupied habitat on the Colorado side there is an abrupt change to cropland on the Utah side of the border. The abrupt transition at the state border in the Piñon Mesa area may be due to differing mapping efforts between the states and is addressed in the “Habitat Monitoring” rangewide strategy (see Objective 1, Strategy 3, pg. 221).



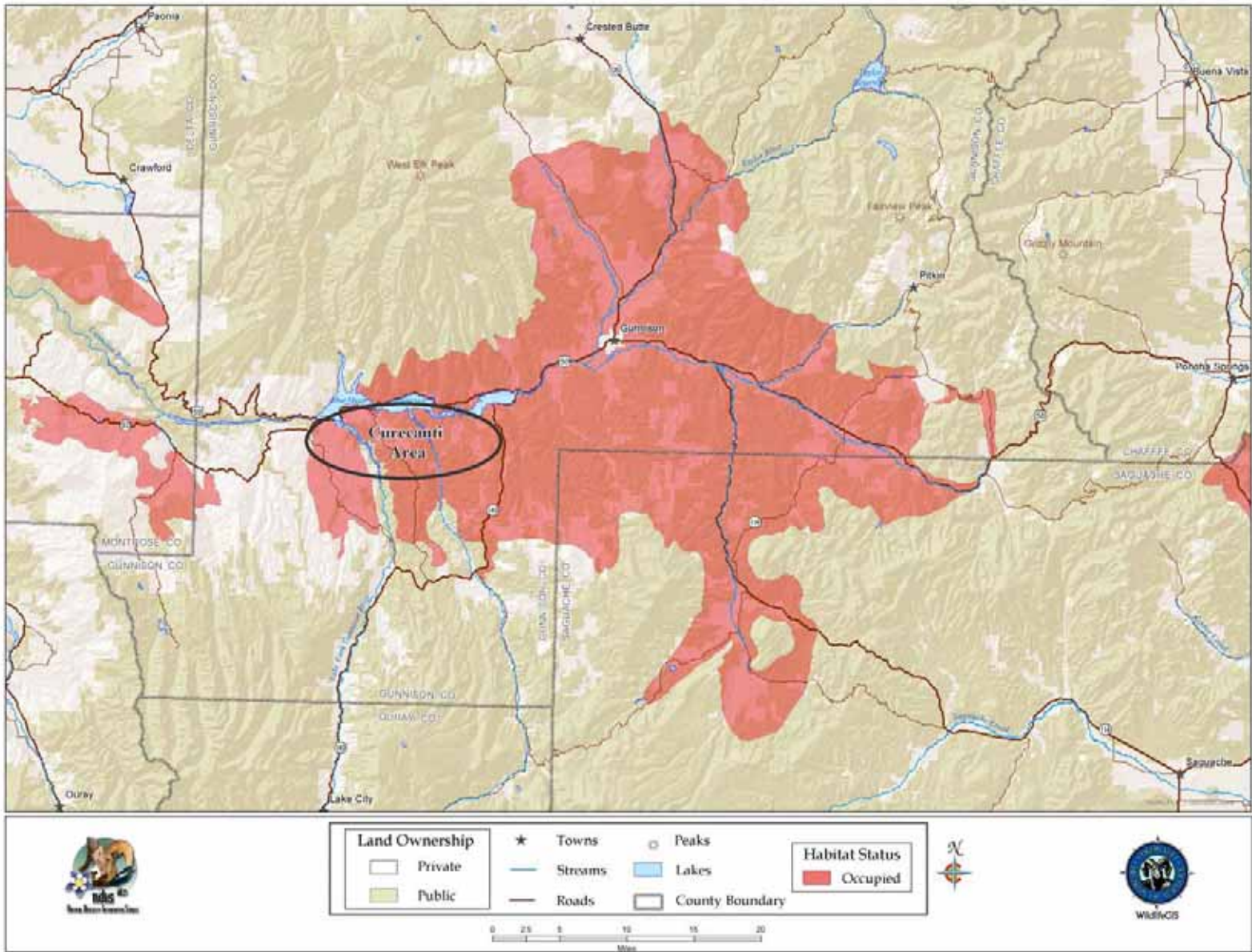


Fig. 5. Location of Curecanti within Gunnison Basin GUSG population area.

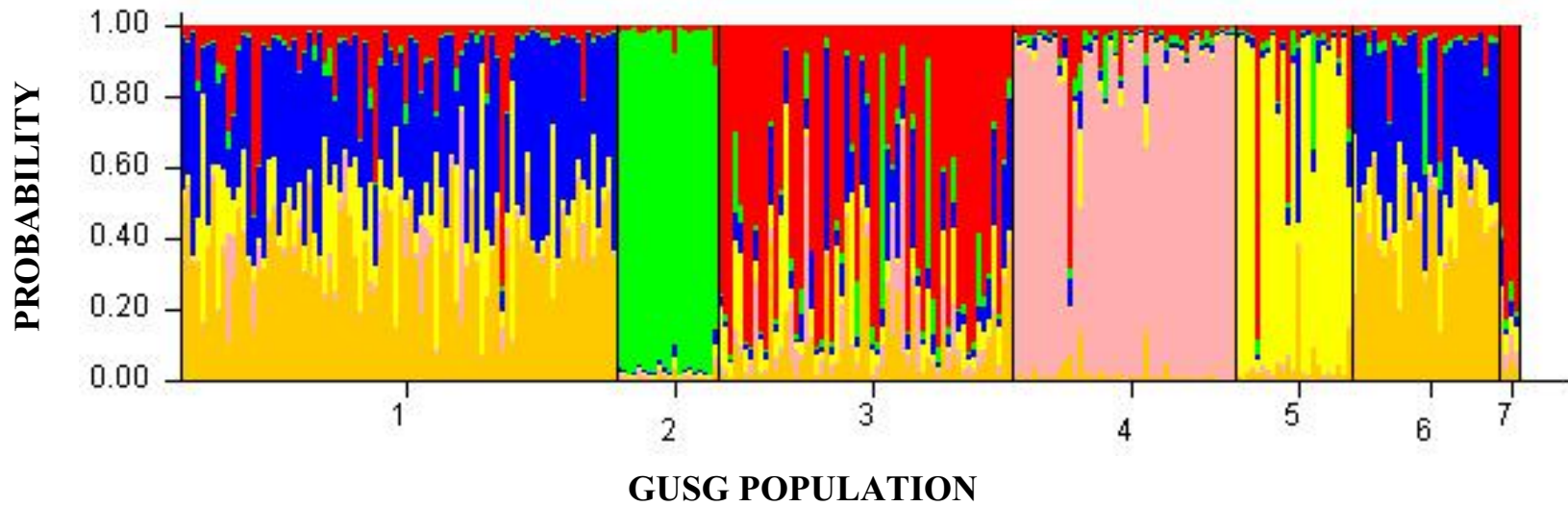


Fig. 7. Results of STRUCTURE analysis conducted by Oyler-McCance et al. (in press). Each vertical bar represents an individual grouped into populations (1 = Gunnison Basin, 2 = Piñon Mesa, 3 = San Miguel Basin, 4 = Dove Creek - Monticello, 5 = Crawford, 6 = Curecanti, 7 = 4 samples taken from Sims Mesa). The colors on each vertical bar represent the probability of the individual belonging to a certain cluster. Each cluster is represented by a unique color.



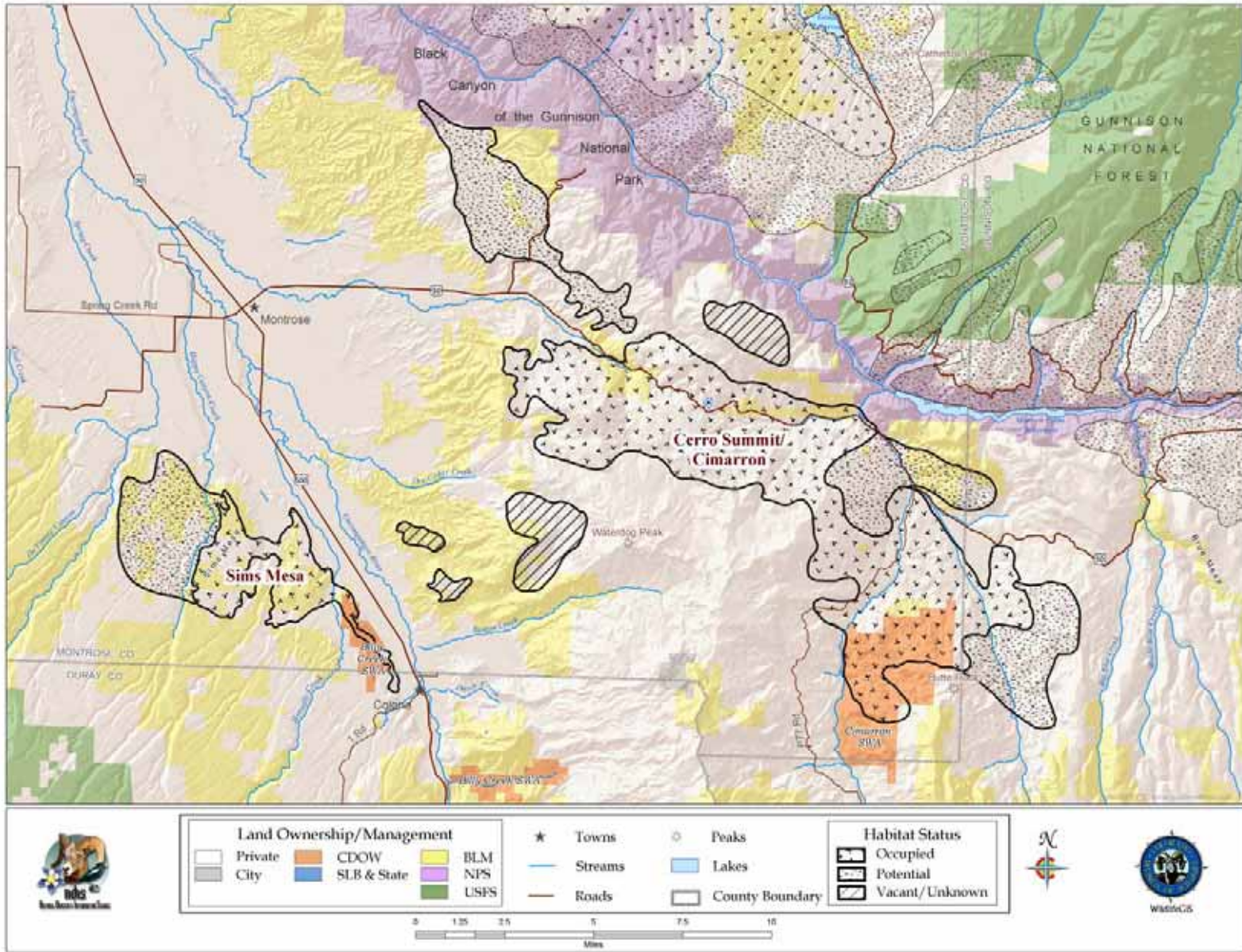


Fig. 8. Location, landownership, and habitat status of the Cerro Summit – Cimarron – Sims Mesa GUSG population. Habitat status definitions are provided on page 54. The original landownership data layer (Bureau of Land Management 2002) has been modified; however inaccuracies may be present.



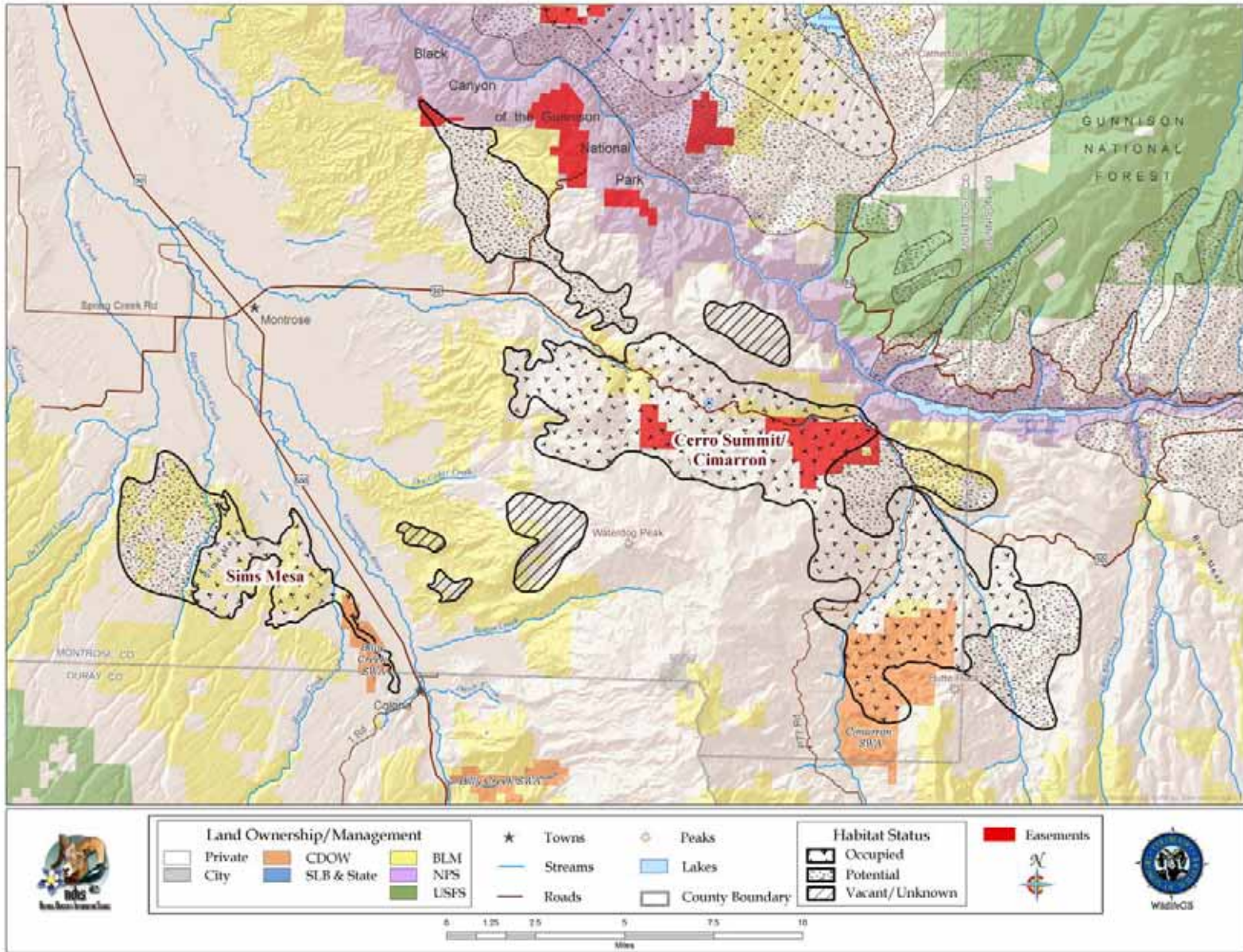


Fig. 9. Conservation easements in the Cerro Summit – Cimarron – Sims Mesa GUSG area (data current through 2003). Habitat status definitions are provided on page 54.



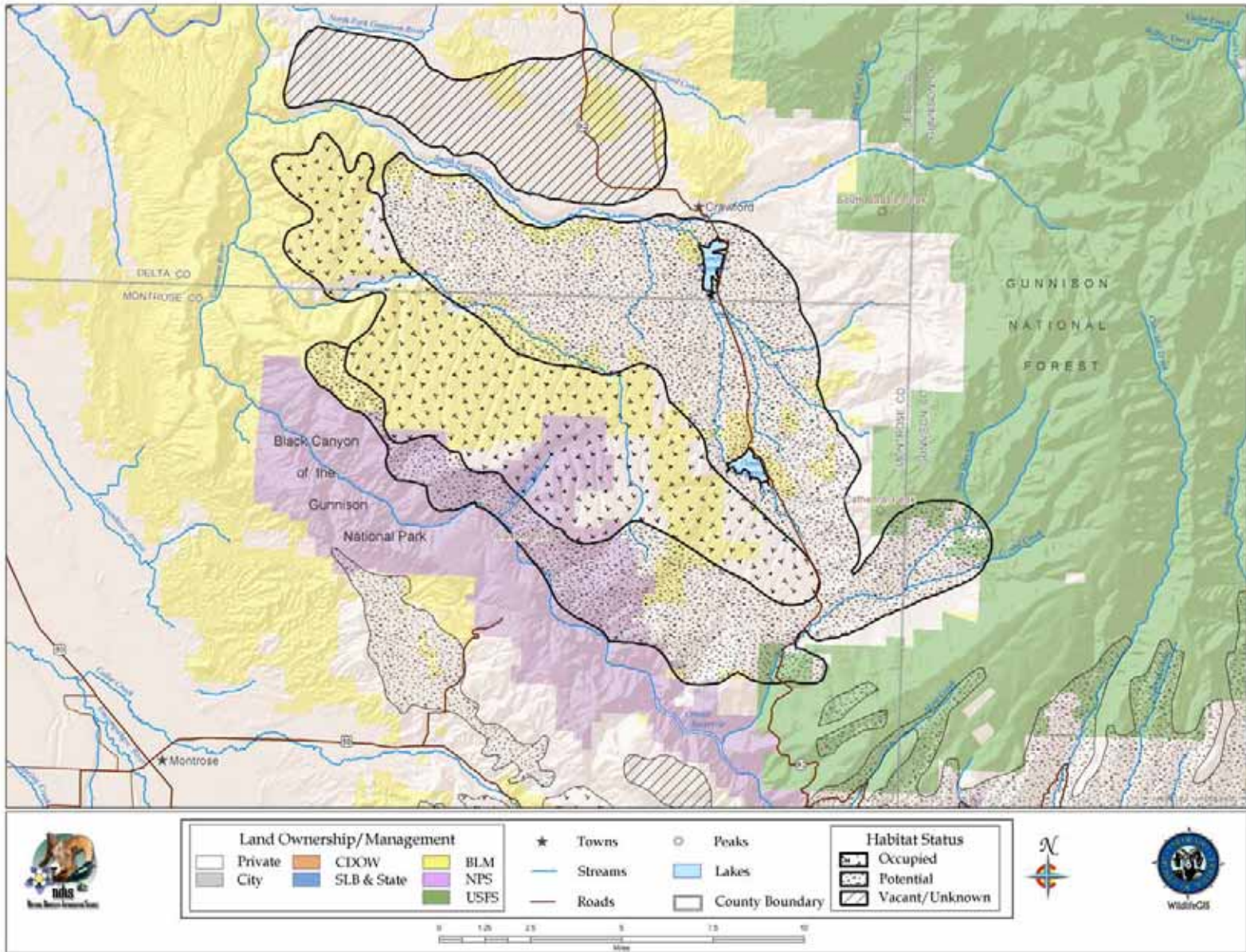


Fig. 10. Location, landownership, and habitat status of the Crawford GUSG population. Habitat status definitions are provided on page 54. The original landownership data layer (Bureau of Land Management 2002) has been modified; however inaccuracies may be present.



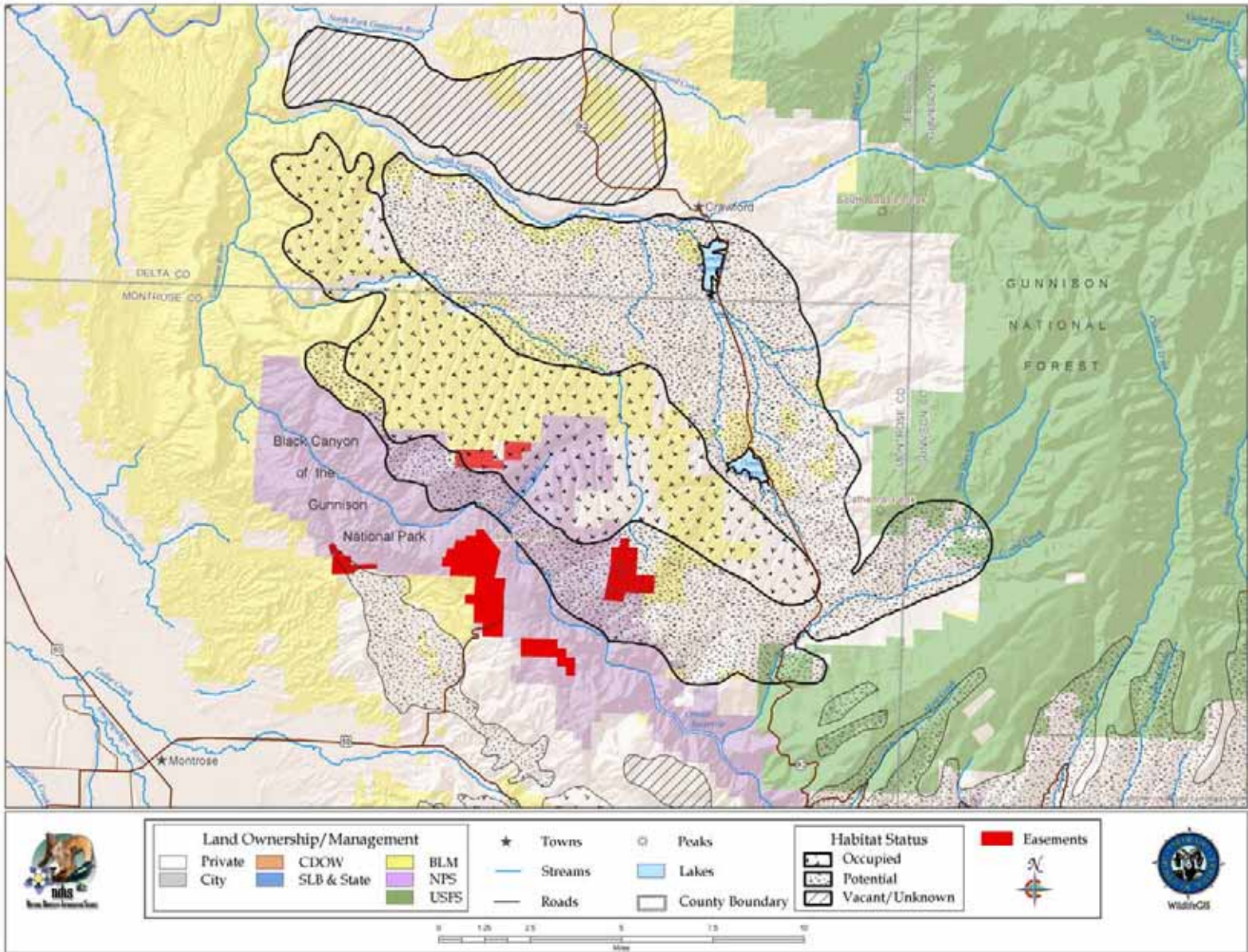


Fig. 11. Conservation easements in the Crawford GUSG area (data current through 2003). Habitat status definitions are provided on page 54.



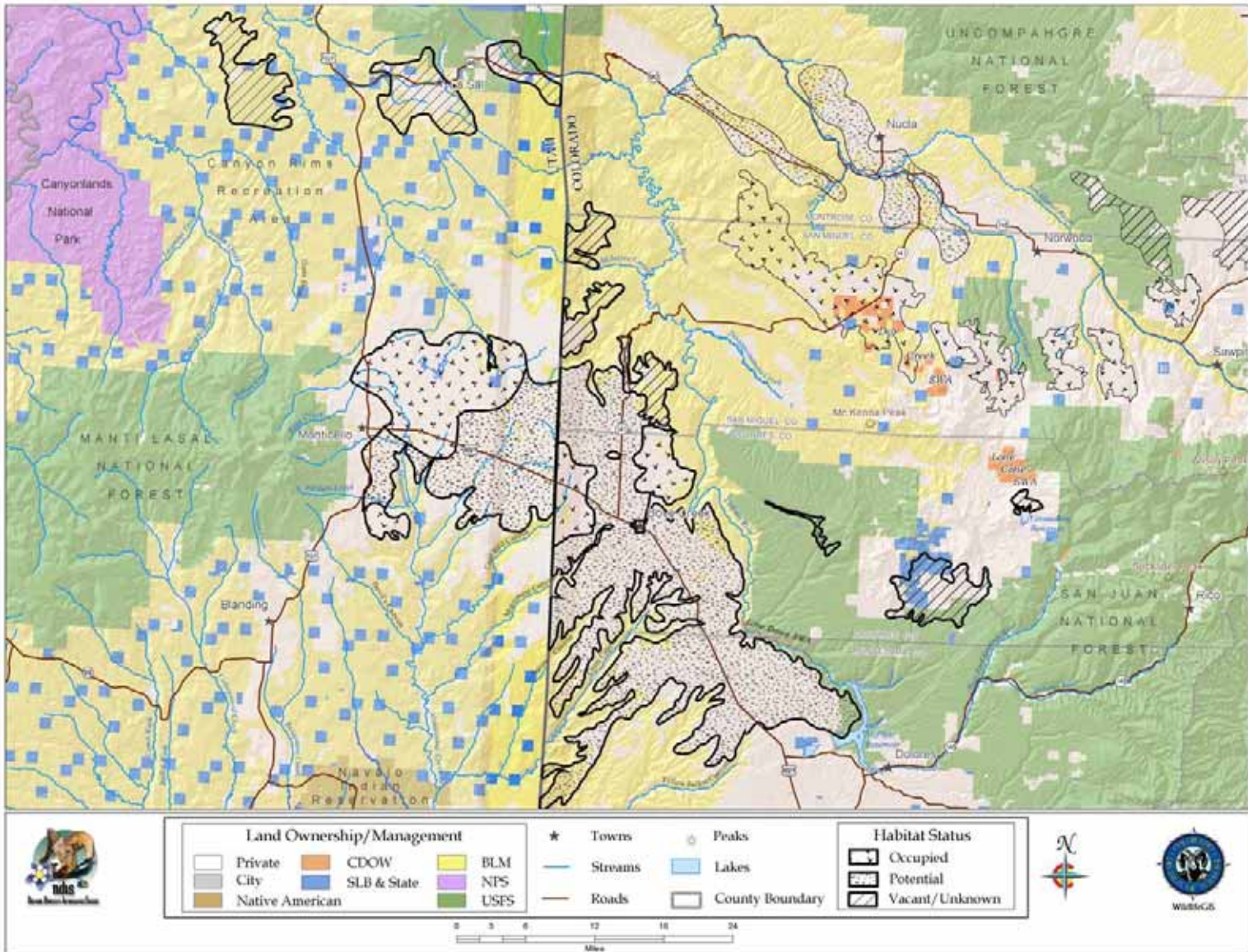


Fig. 12. Location, landownership, and habitat status of the Dove Creek and Monticello GUSG populations. Habitat status definitions are provided on page 54. The abrupt discontinuity in occupied habitat at the state line is not entirely a mapping artifact; where there is occupied habitat on the Colorado side there is an abrupt change to cropland on the Utah side of the border. Resolving differences in “Potential” and “Vacant/Unknown” habitat mapping efforts between the states is addressed in the “Habitat Monitoring” rangewide strategy (see Objective 1, Strategy 3, pg. 221). The original landownership data layer (Bureau of Land Management 2002) has been modified; however inaccuracies may be present.



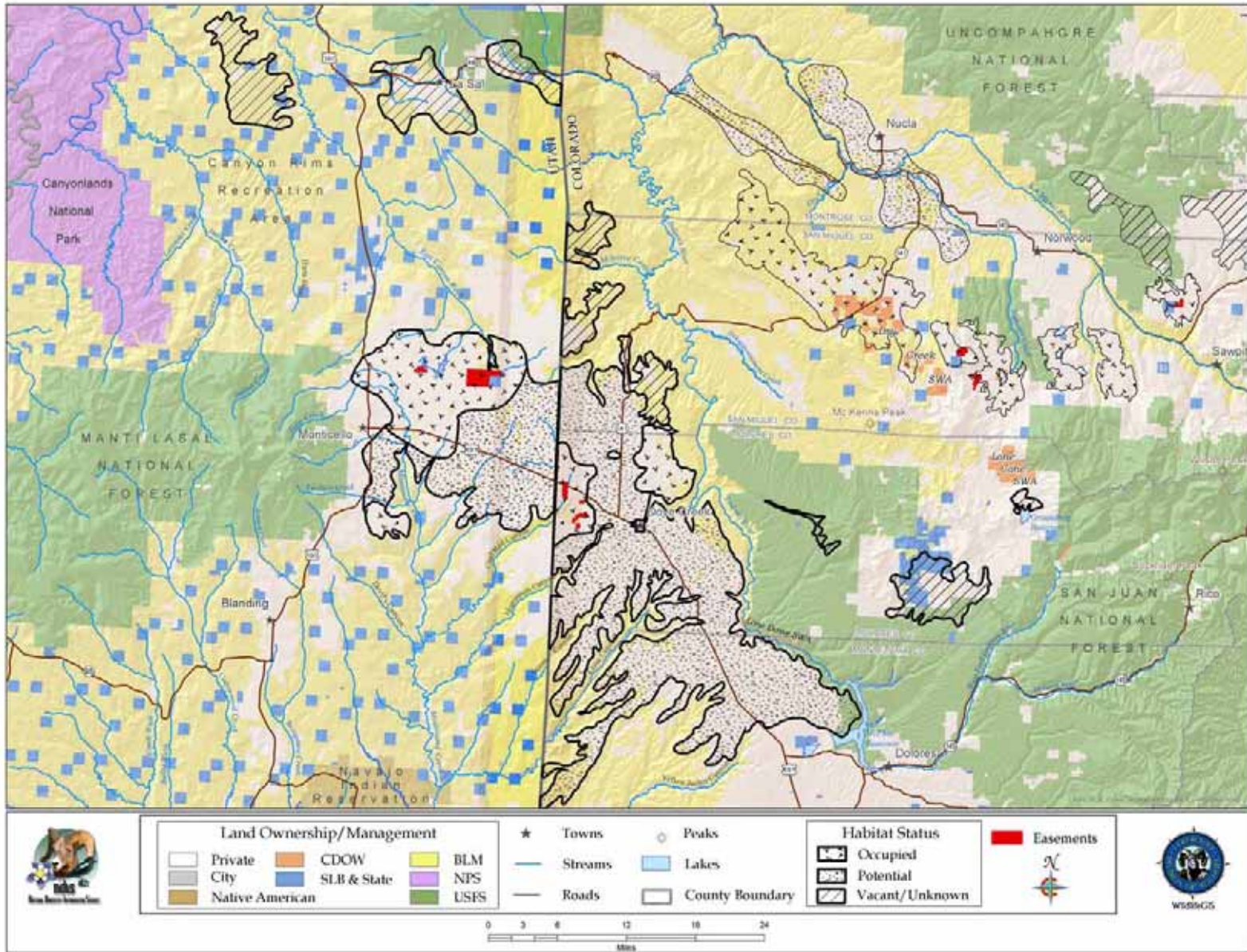


Fig. 13. Conservation easements in the Dove Creek and Monticello GUSG area (data current through 2003). Habitat status definitions are provided on page 54. See Fig. 12 (pg. 69) for discussion of habitat discontinuities at the state line.



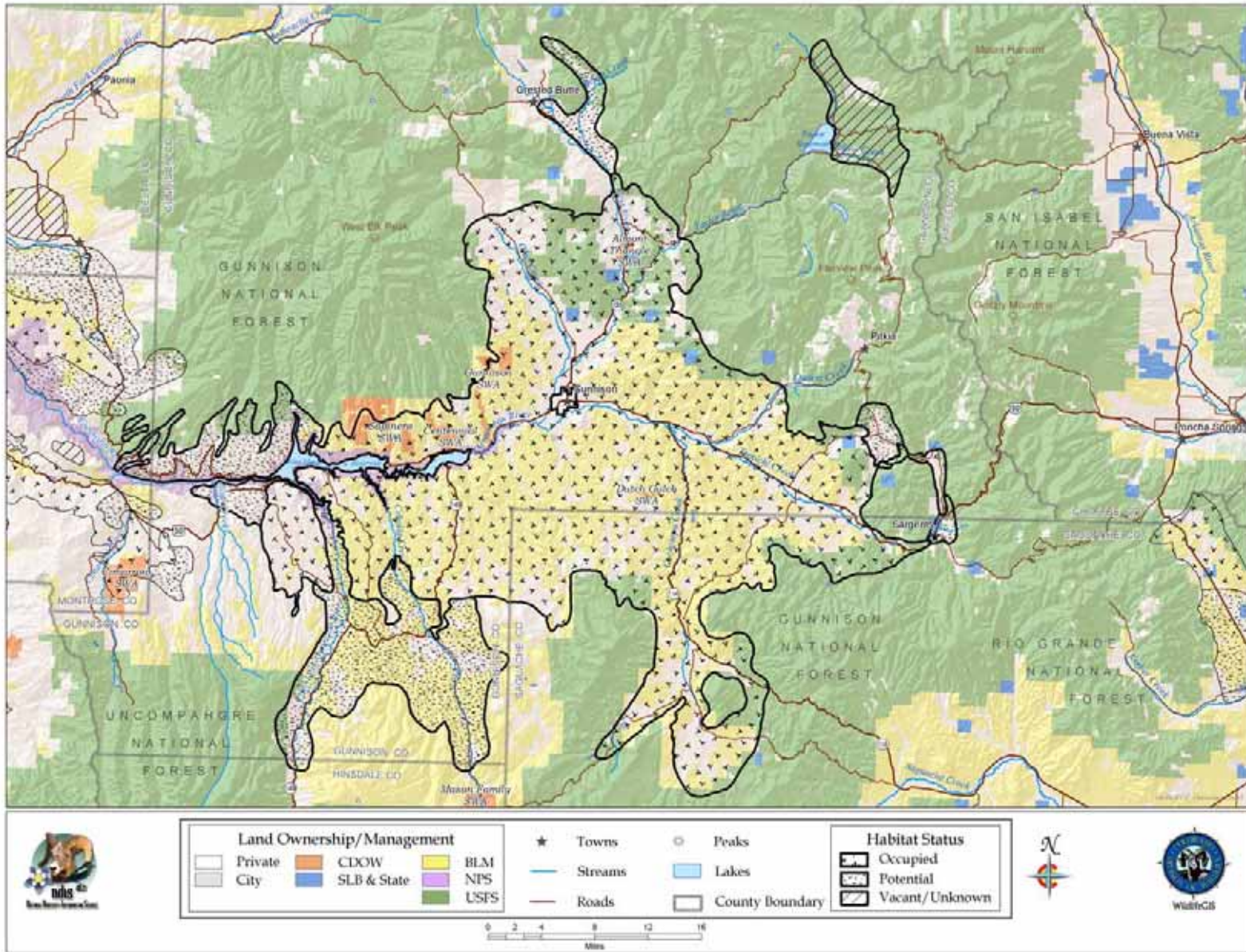


Fig. 14. Location, landownership, and habitat status of the Gunnison Basin GUSG population. Habitat status definitions are provided on page 54. The original landownership data layer (Bureau of Land Management 2002) has been modified; however inaccuracies may be present.



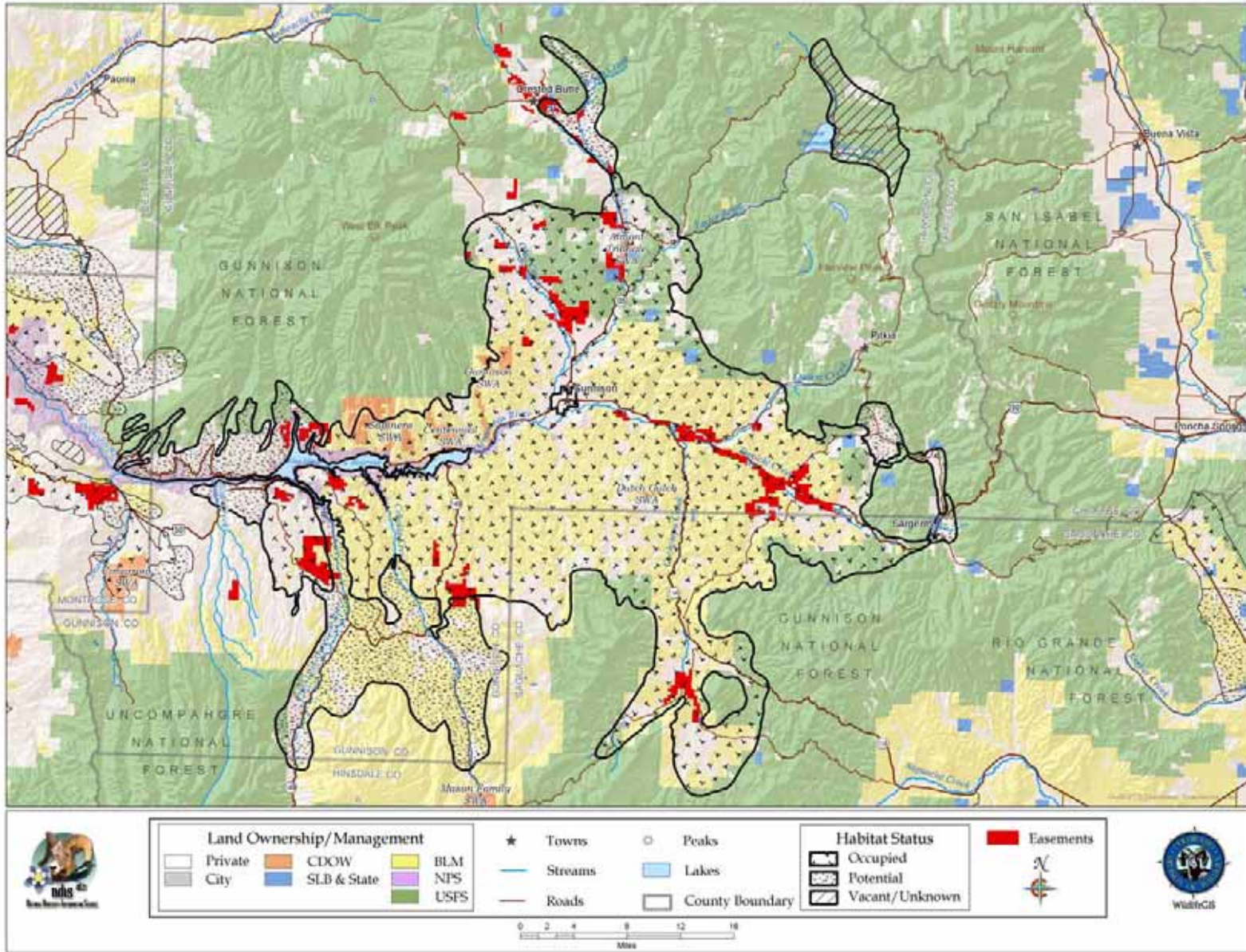


Fig. 15. Conservation easements in the Gunnison Basin GUSG area (data current through 2003). Habitat status definitions are provided on page 54.



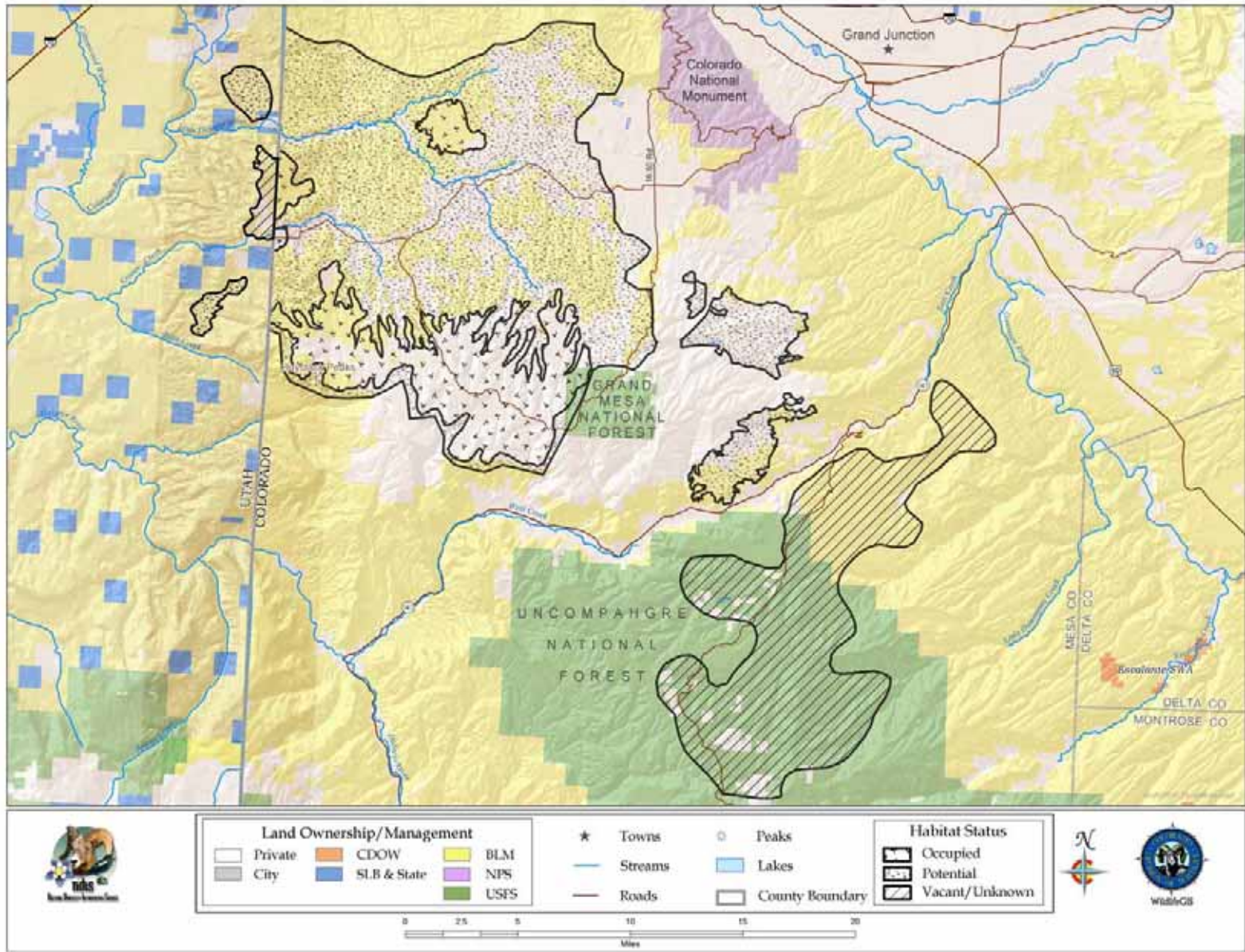


Fig. 16. Location, landownership, and habitat status of the Piñon Mesa GUSG population. Habitat status definitions are provided on page 54. Discontinuities in habitat at the state border may be due to differing mapping efforts between the states and is addressed in the “Habitat Monitoring” rangewide strategy (see Objective 1, Strategy 3, pg. 221). The original landownership data layer (Bureau of Land Management 2002) has been modified; however inaccuracies may be present.



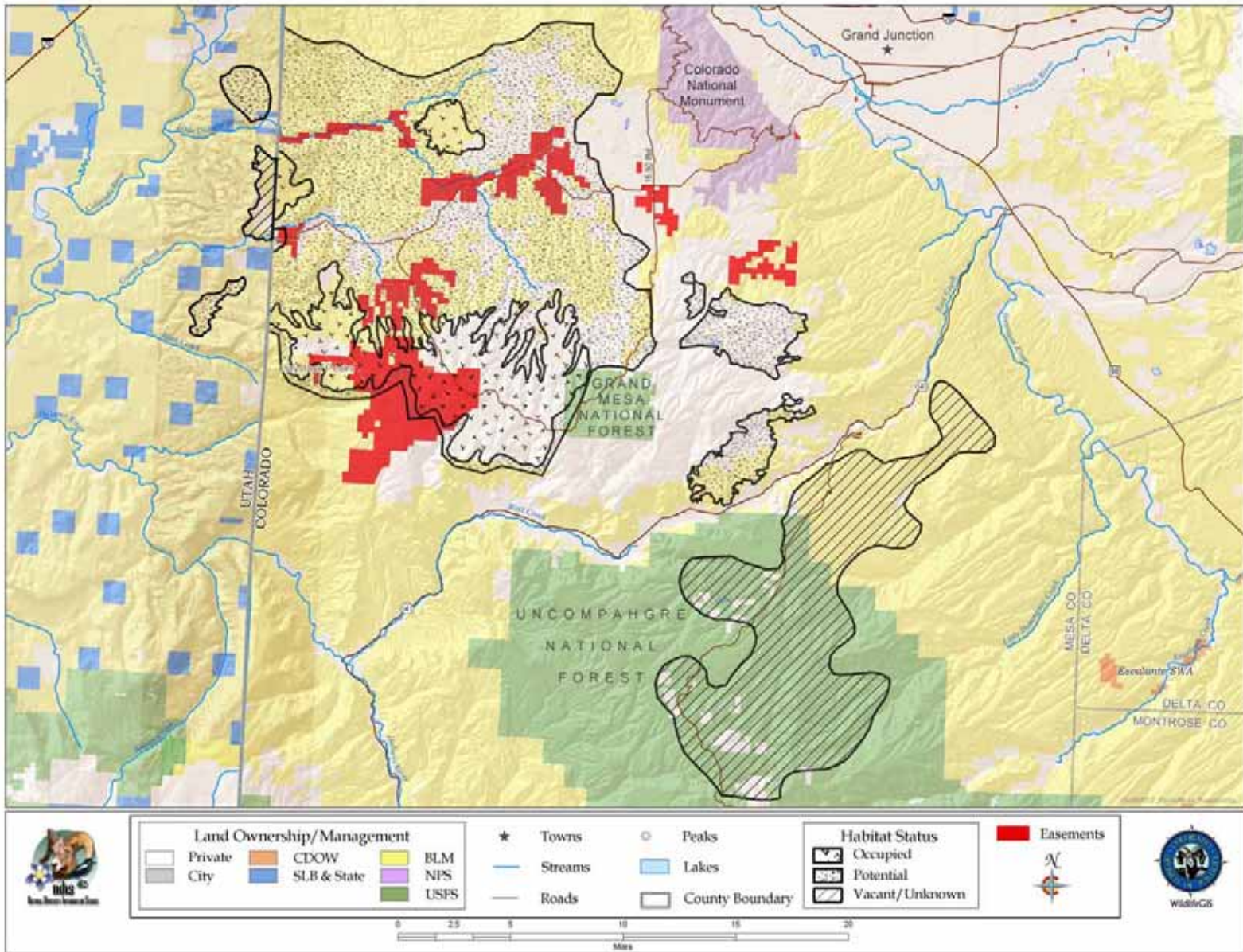


Fig. 17. Conservation easements in the Piñon Mesa GUSG area (data current through 2003). Habitat status See Fig. 16 (pg. 86) for discussion of habitat discontinuities at the state line.



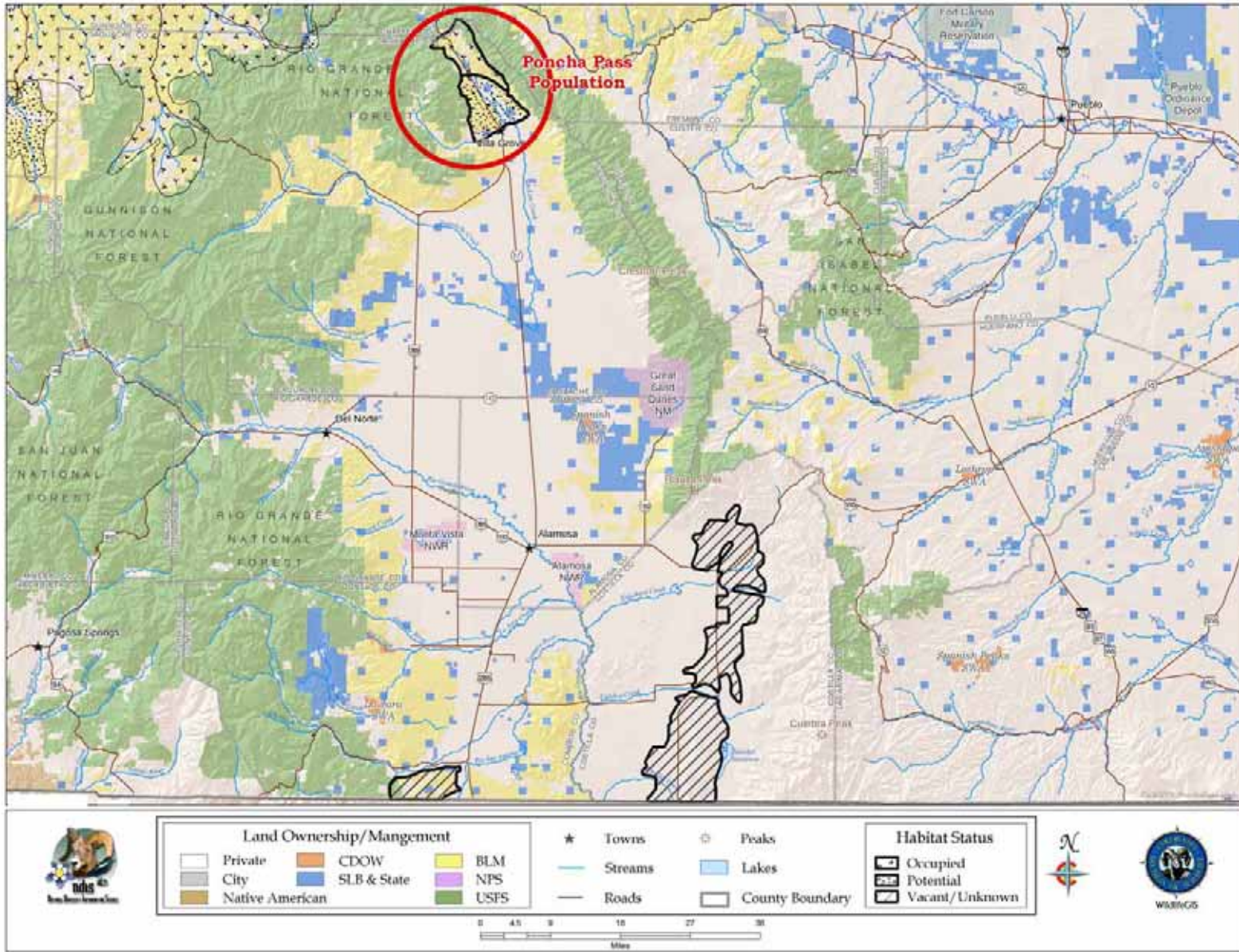


Fig. 18. Location, landownership, and habitat status of the Poncha Pass GUSG population. Habitat status definitions are provided on page 54. The original landownership data layer (Bureau of Land Management 2002) has been modified; however inaccuracies may be present.



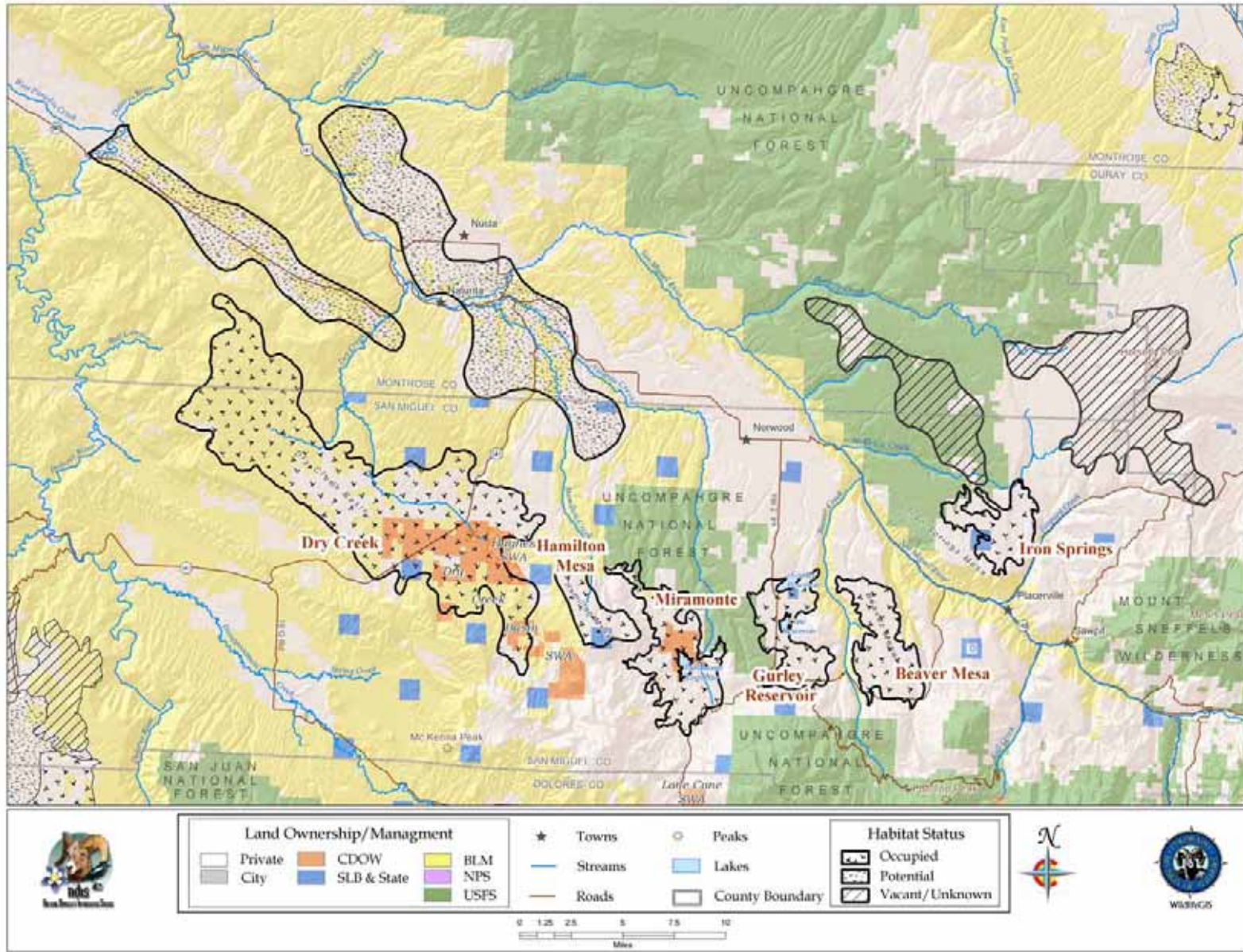


Fig. 19. Location, landownership, and habitat status of the San Miguel Basin GUSG population. Habitat status definitions are provided on page 54. The Hughes SWA has been recently acquired and was not used in the analysis. The original landownership data layer (Bureau of Land Management 2002) has been modified; however inaccuracies may be present.



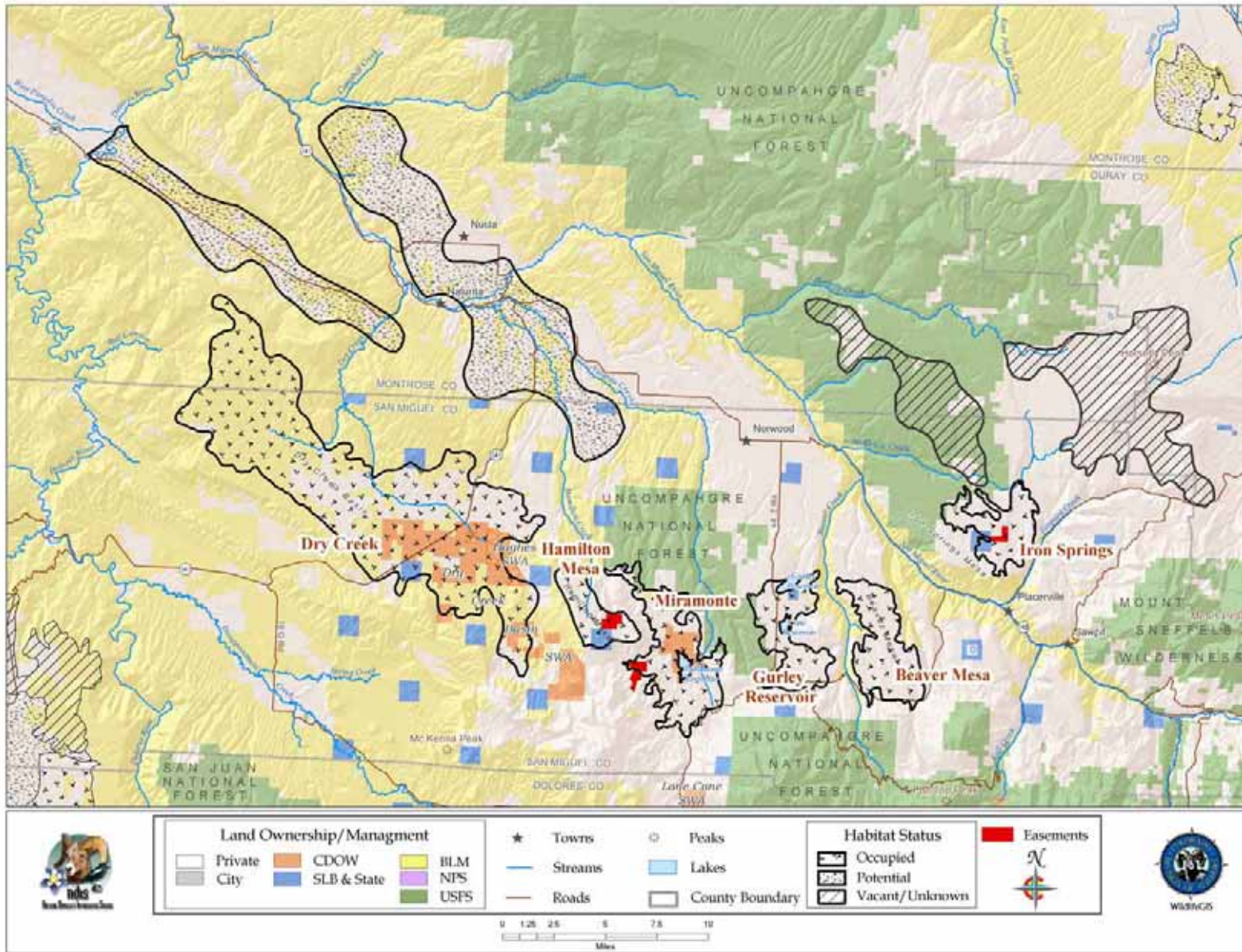


Fig. 20. Conservation easements in the San Miguel Basin GUSG area (data current through 2003). Habitat status definitions are provided on page 54. The Hughes SWA has been recently acquired and was not used in the analysis.