

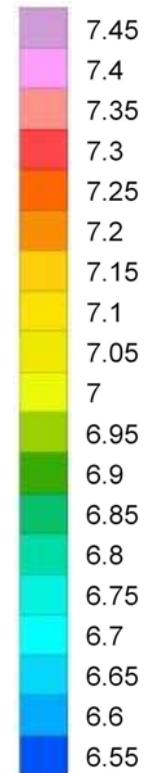
**Julesburg Substation**

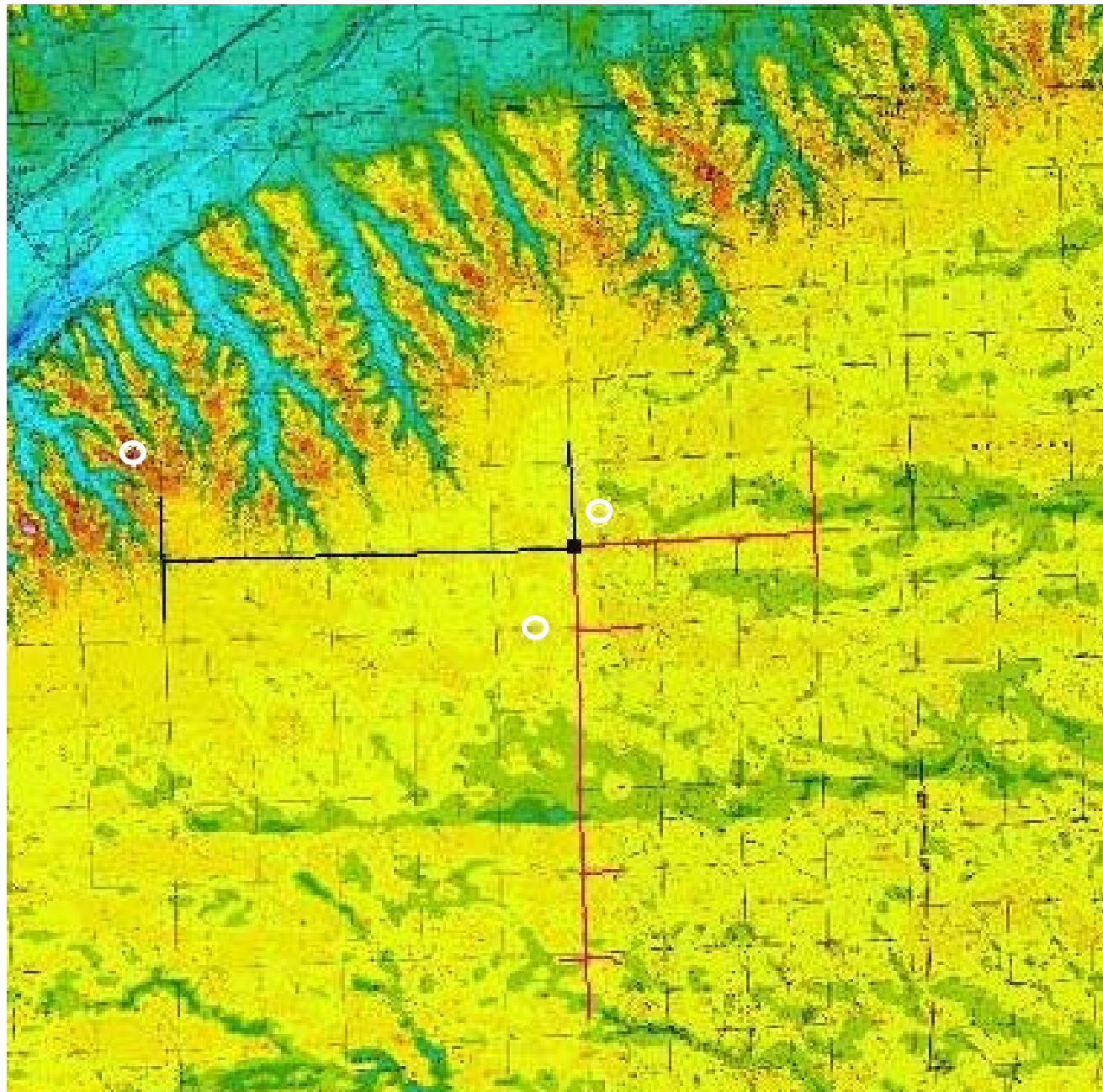
No Turbines Added

Maximum distance is 4.3 miles from the substation.

More desirable windier areas north of Julesburg would require line extensions of over ½ mile or a dedicated circuit.

**m/s at 50 m**



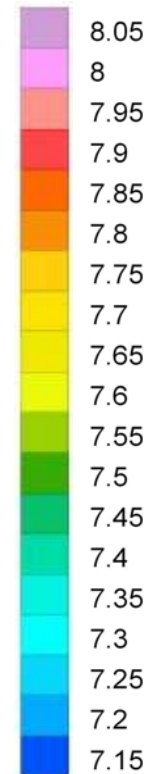


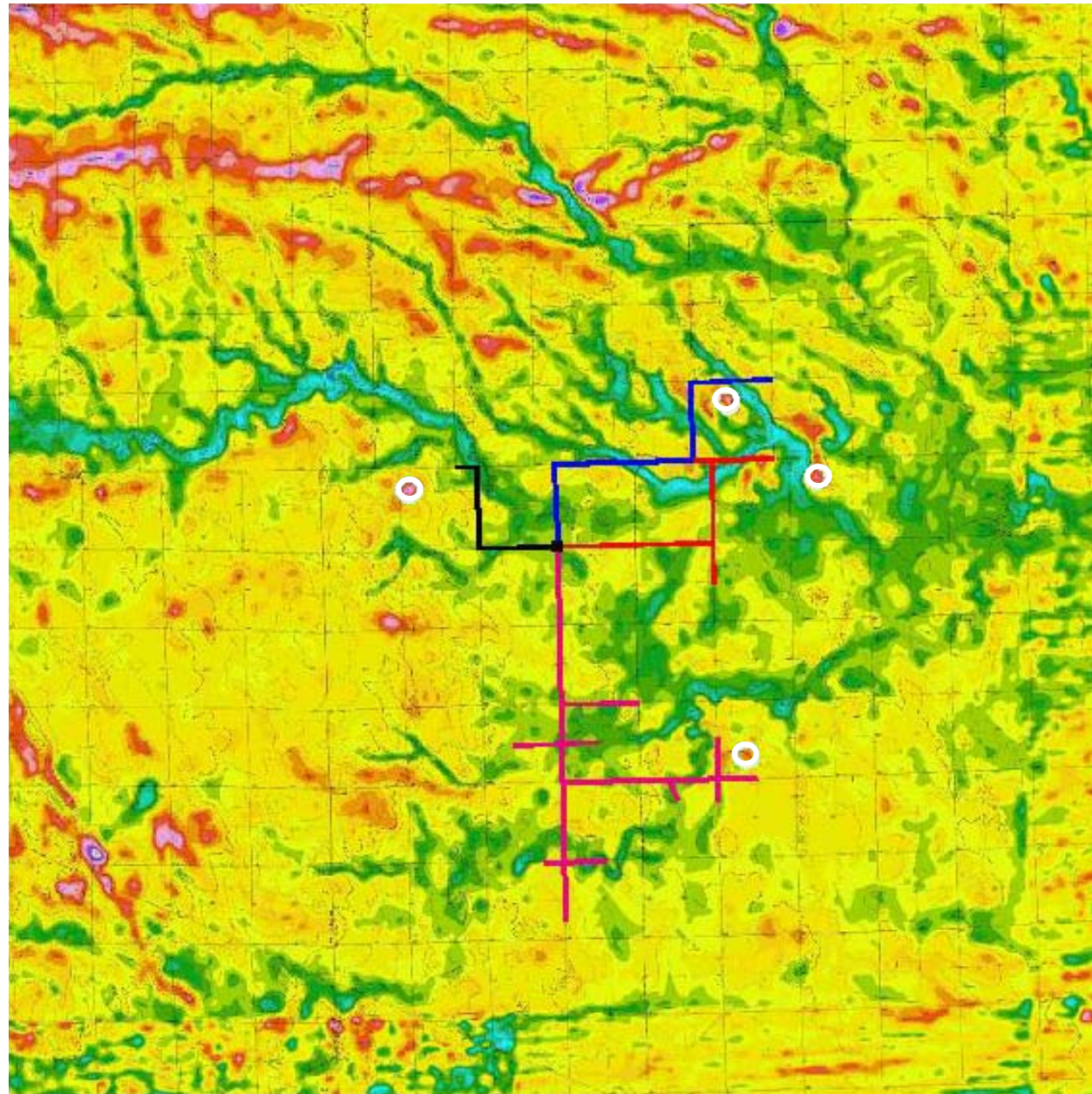
**Northeast Substation**

Three Turbines Added

Maximum distance is 5.8 miles from the substation. The windier area near the river is more attractive for wind turbines, however the west feeder can only handle one wind turbine because of power quality problems.

**m/s at 50 m**



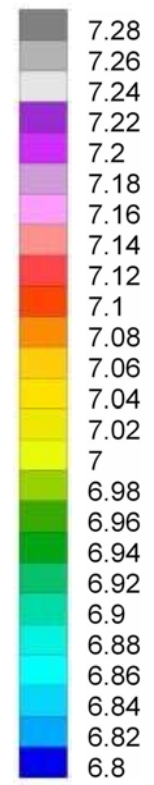


**Red Willow Substation**

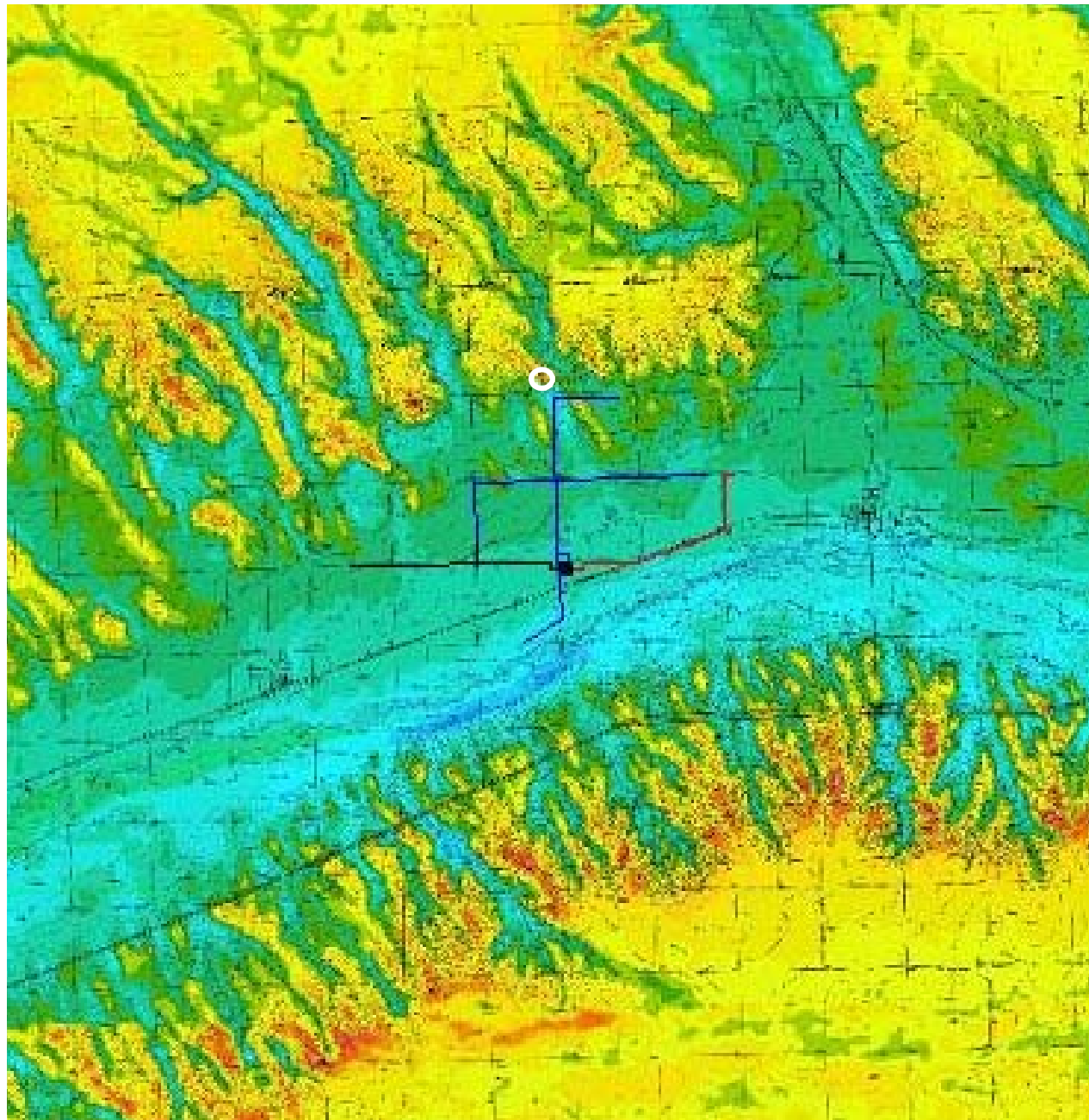
Four Turbines Added

Maximum distance is 5.5 miles from the substation

**m/s at 50 m**





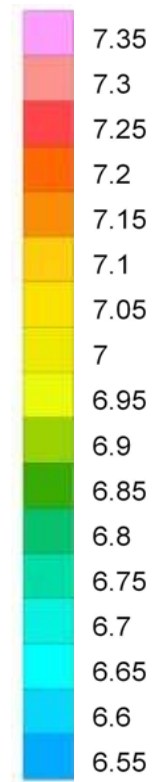


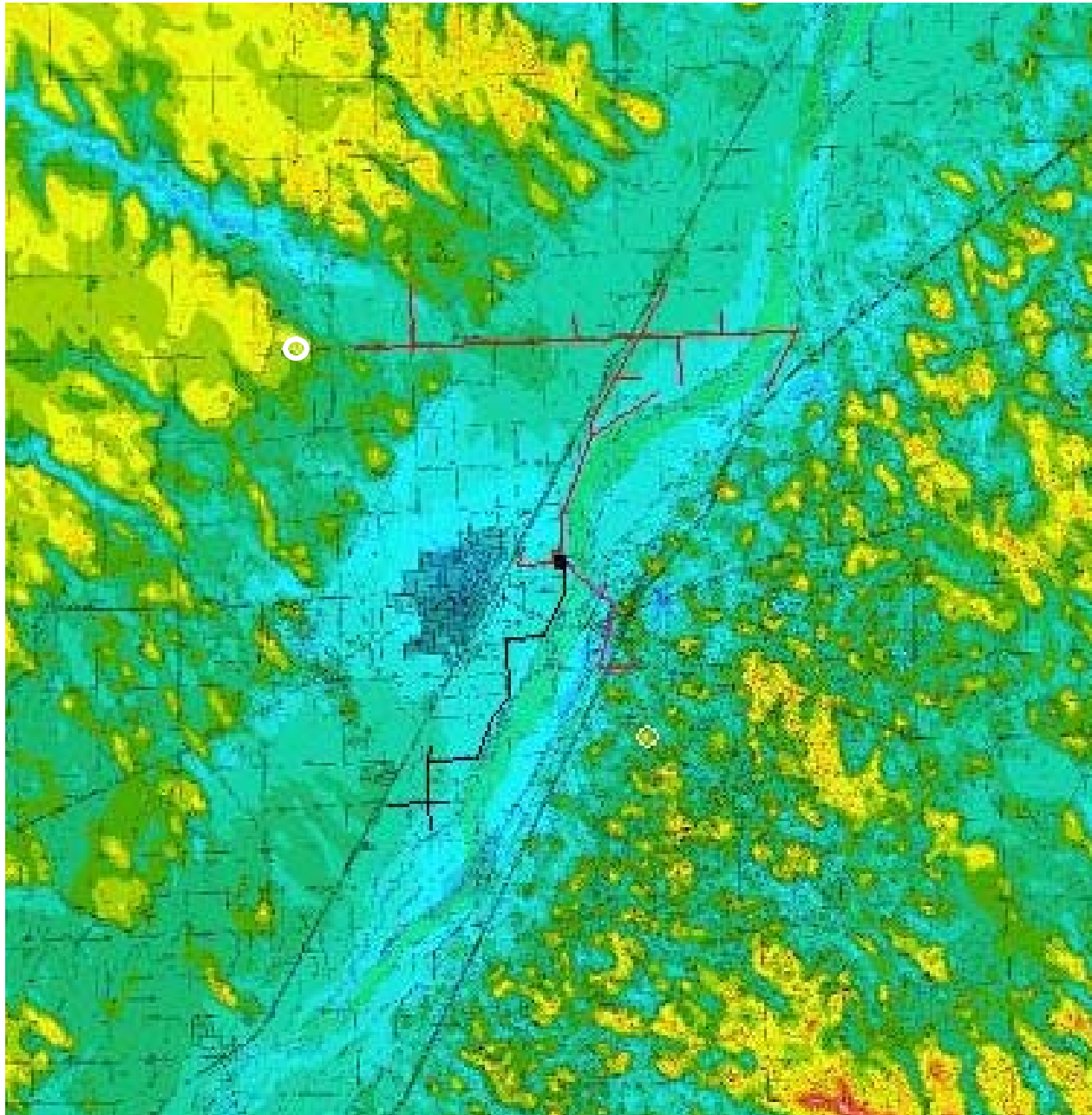
**Sedgwick Substation**

One Turbine Added.  
Maximum distance is 2.8 miles  
from the substation.

One more turbine could be added  
to both the east and west feeders  
to reach the windier areas,  
however each would require line  
extensions of over a mile.

**m/s at 50 m**



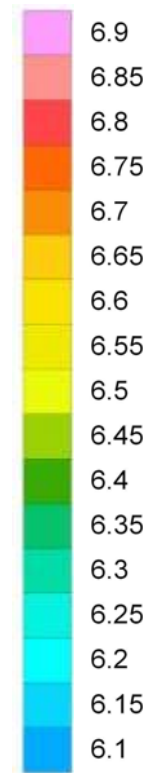


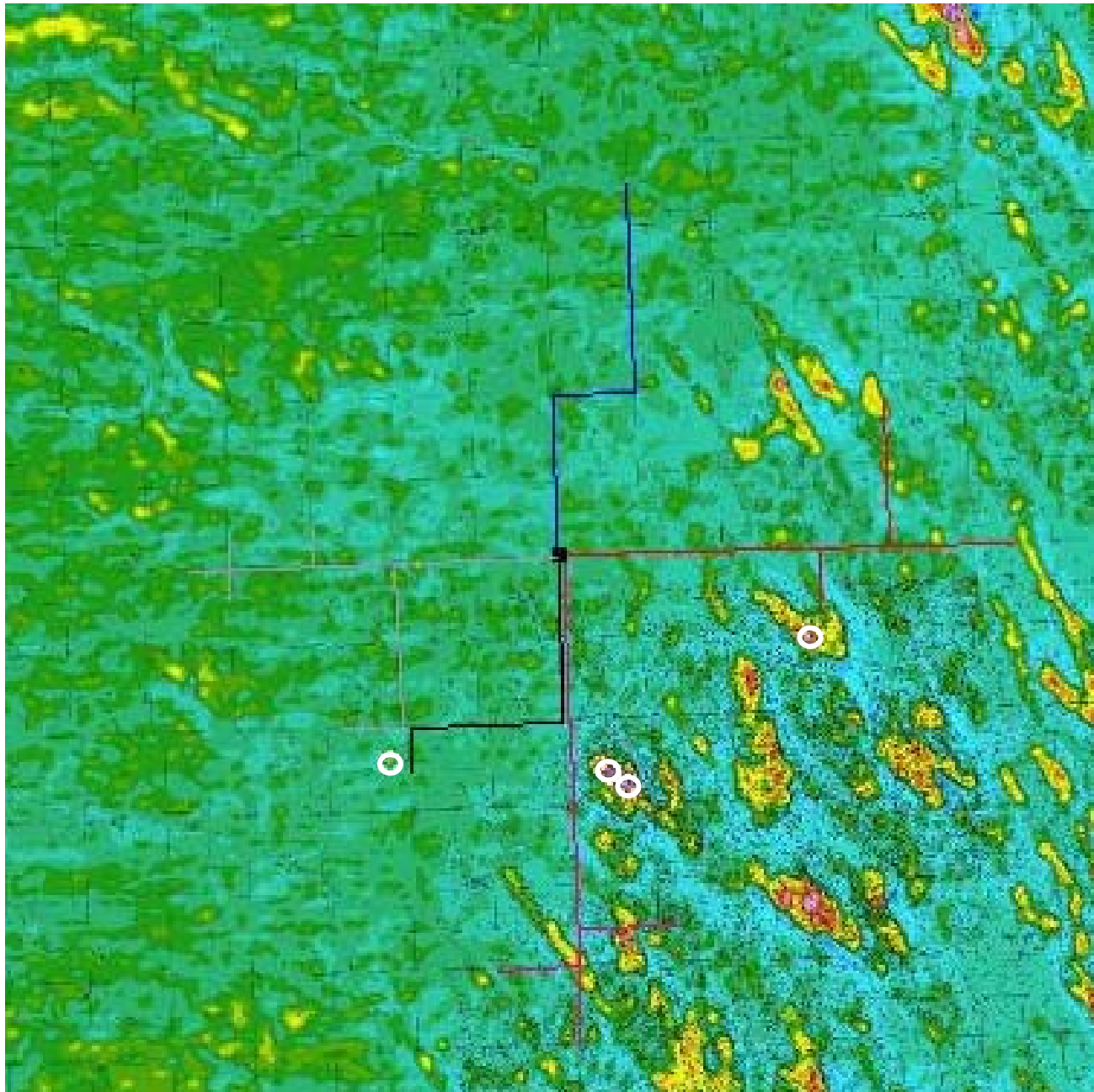
**Sterling Substation**

Two Turbines Added

Maximum distance is 6.5 miles from the substation

**m/s at 50 m**



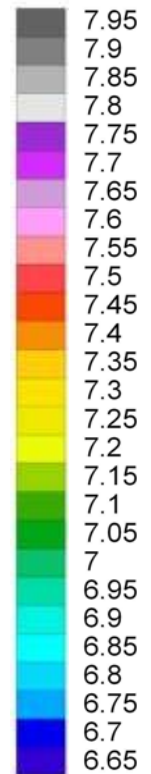


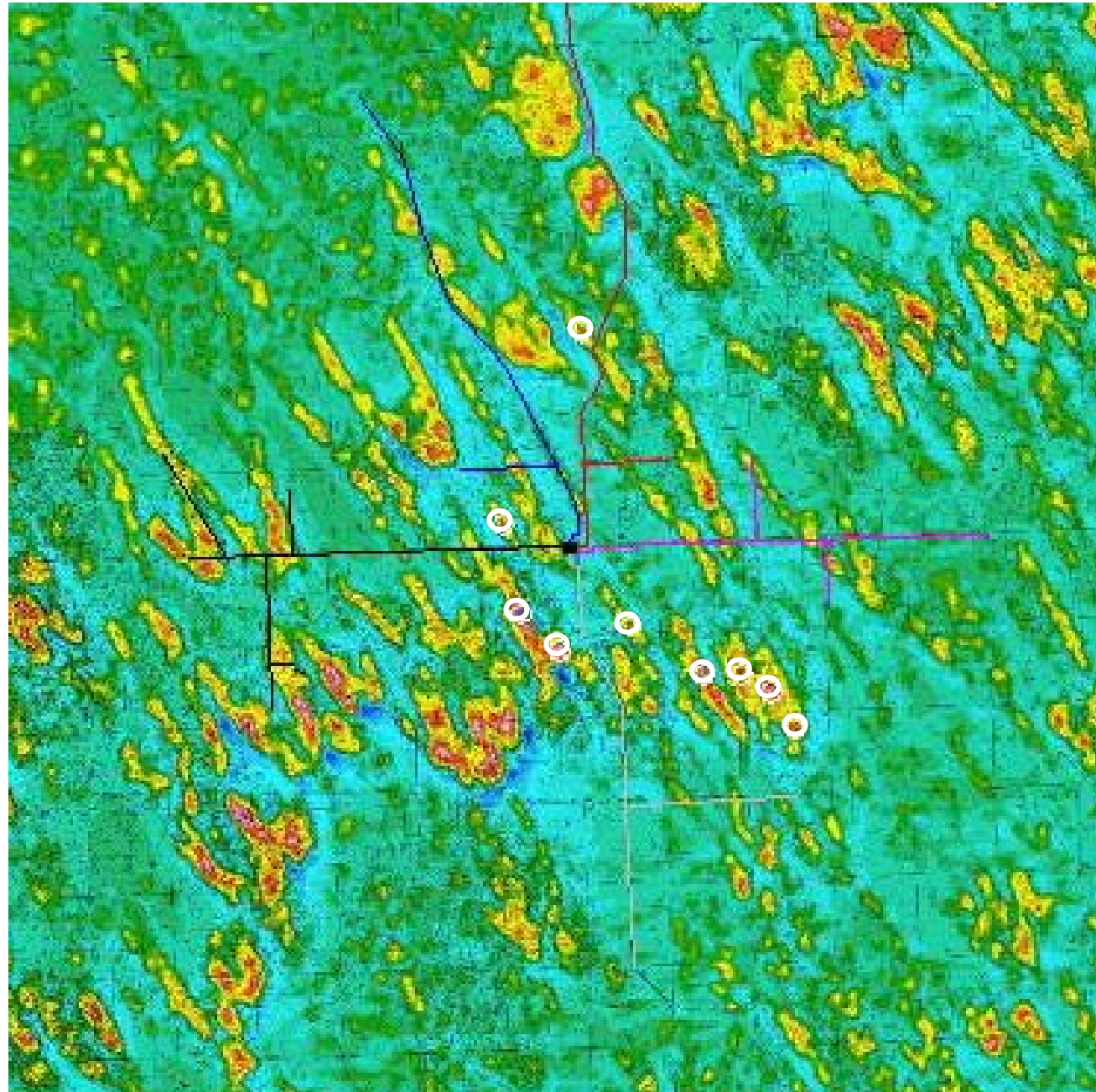
**Wages Substation**

Four Turbines Added

Maximum distance is 6.4 miles from the substation

**m/s at 50 m**



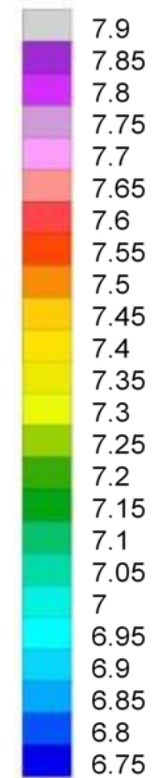


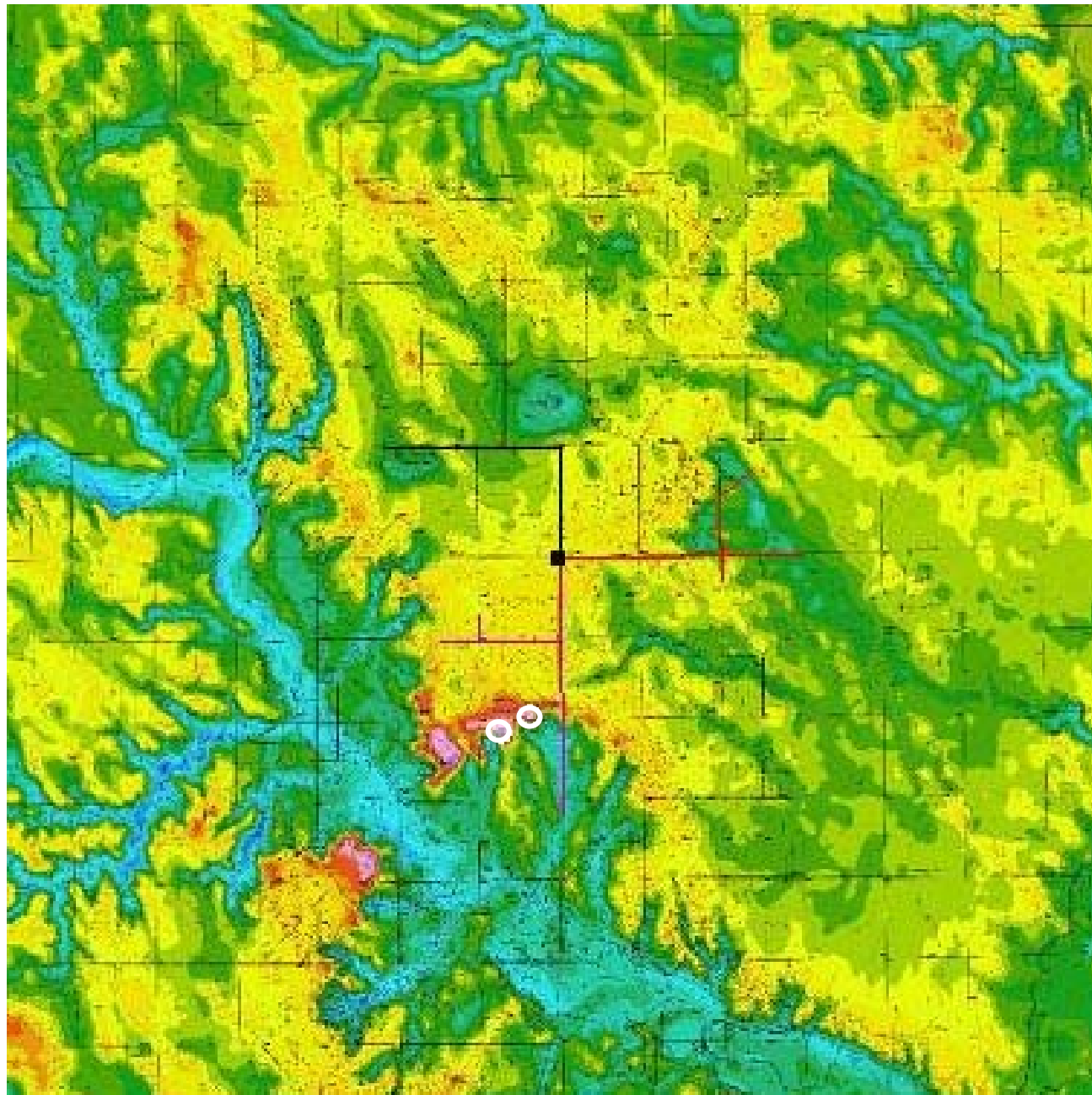
**Wauneta Substation**

Nine Turbines Added

Maximum distance is 7.0 miles from the substation

**m/s at 50 m**





**West Plains Substation**

Two Turbines Added

Maximum distance is 3.3 miles from the substation

**m/s at 50 m**

