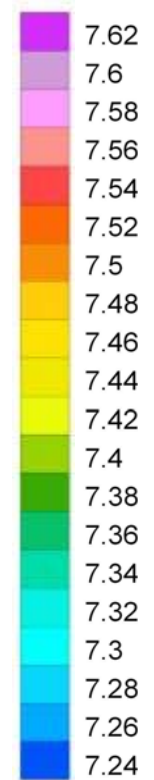


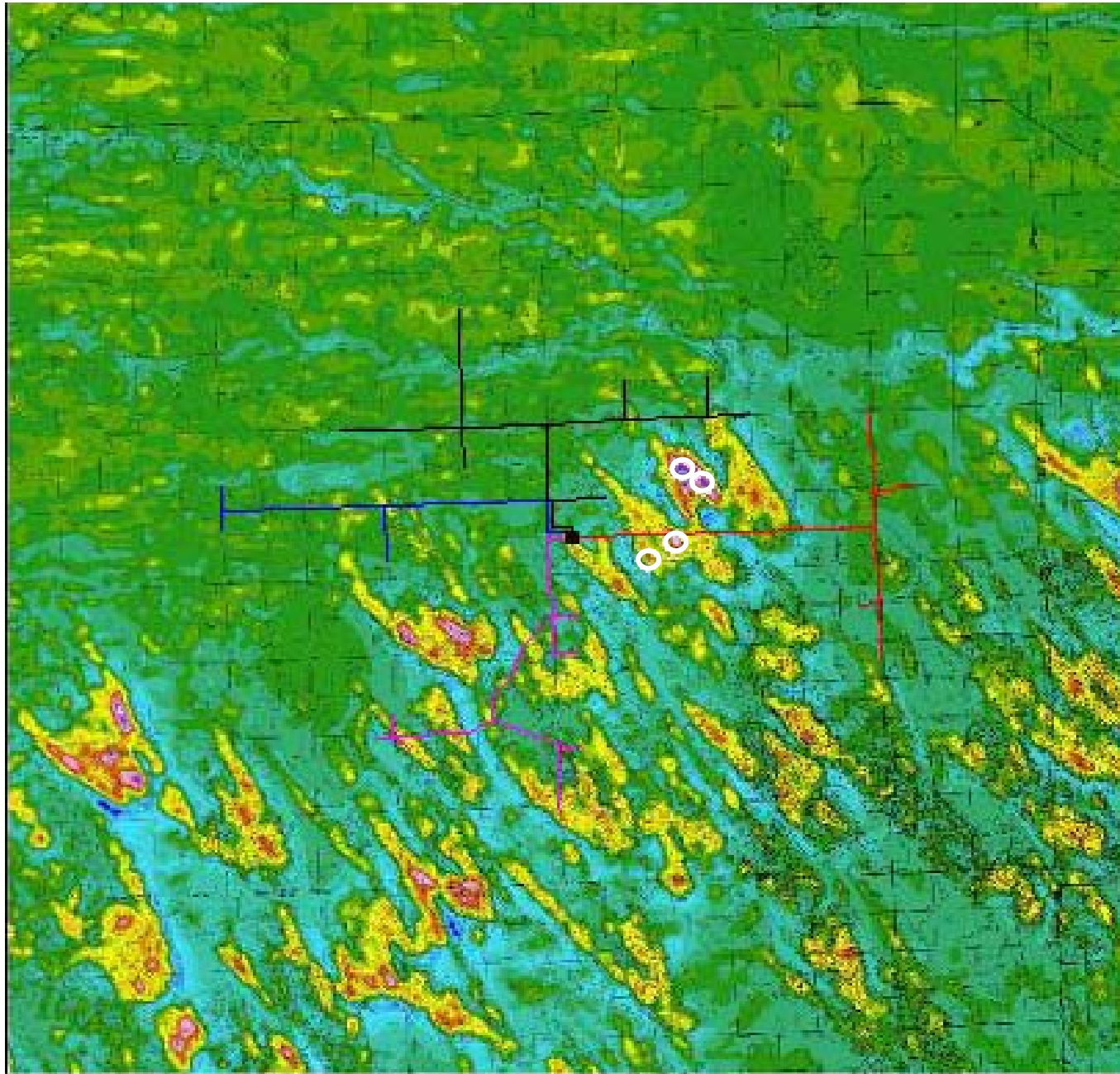
**Amherst Substation**

Six Turbines Added

Maximum distance is 5.4 miles from the substation

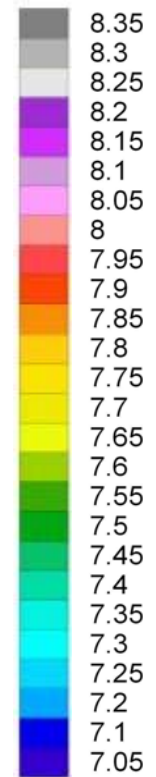
**m/s at 50 m**

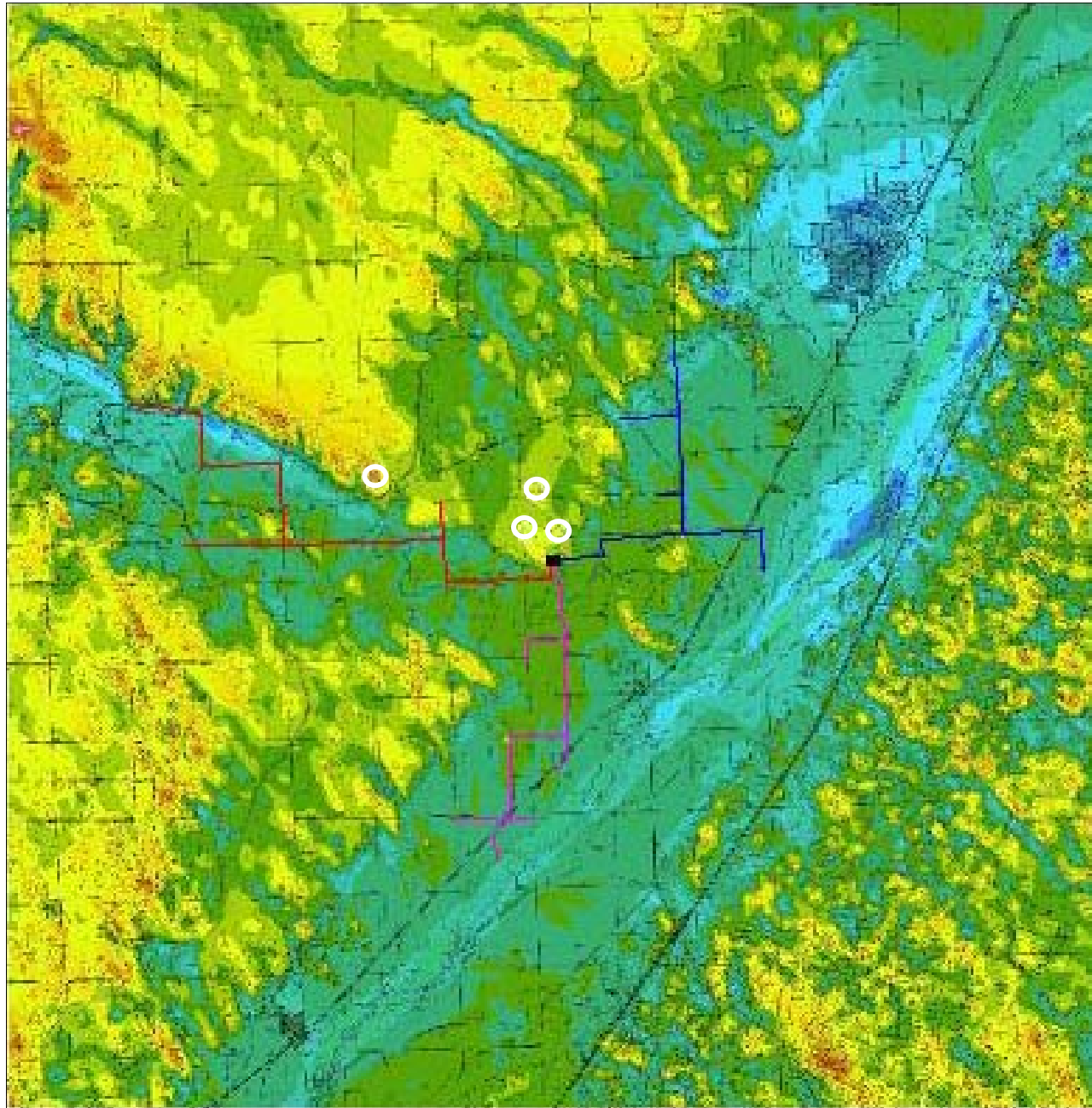




**Amitie Substation**  
Four Turbines Added  
Maximum distance is 5.5 miles from the substation

**m/s at 50 m**



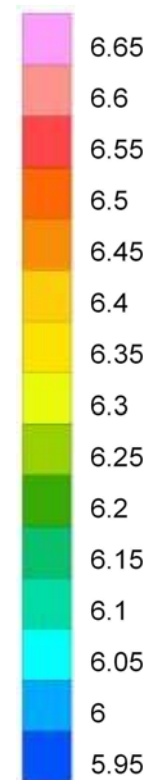


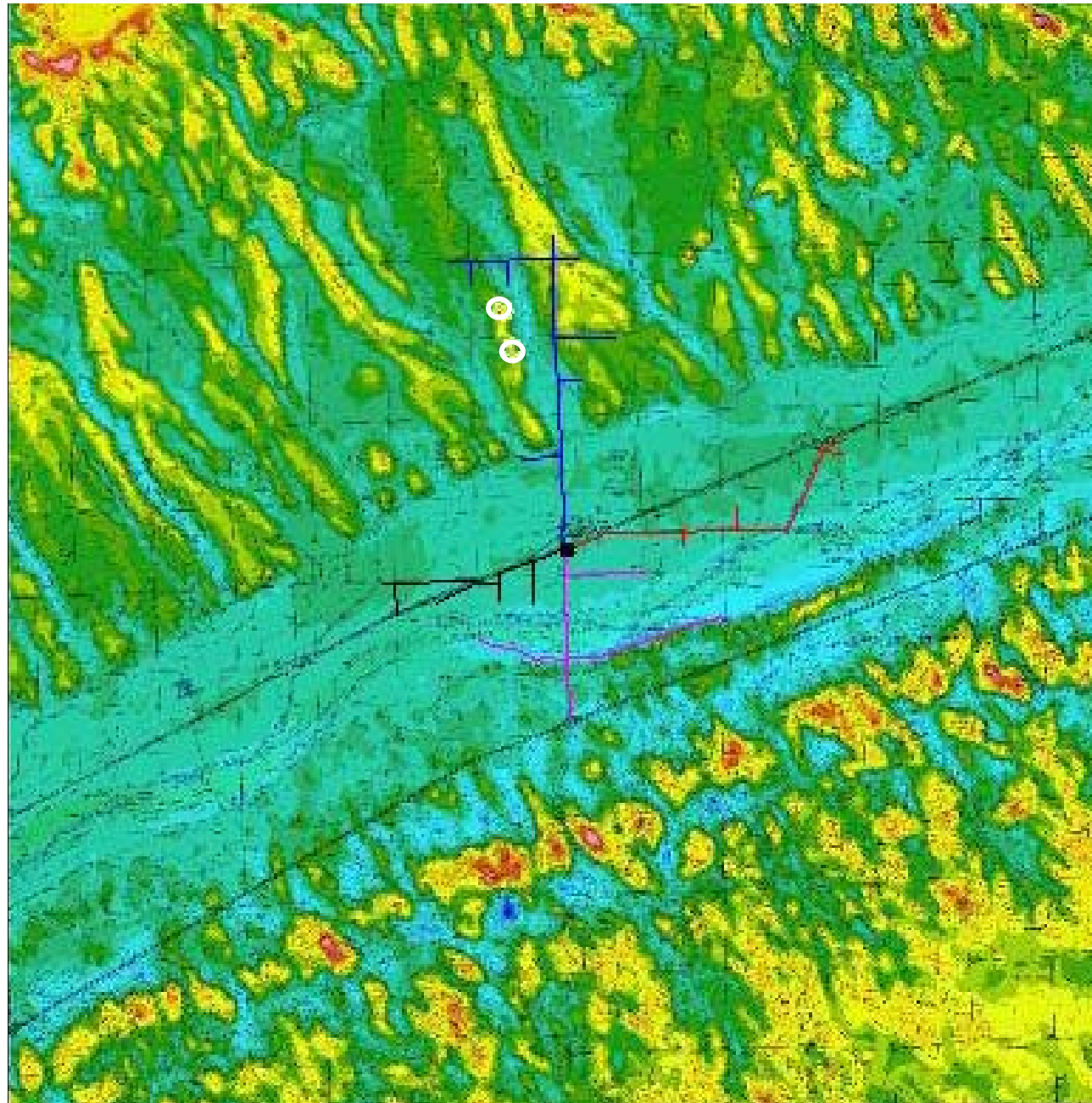
**Atwood Substation**

Four Turbines Added

Maximum distance is 4.2 miles from the substation

**m/s at 50 m**





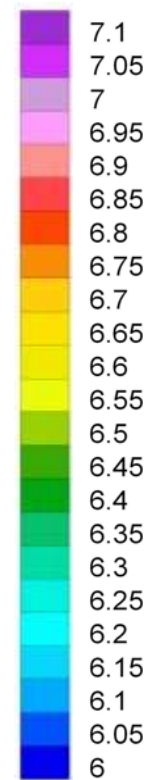
**Crook Substation**

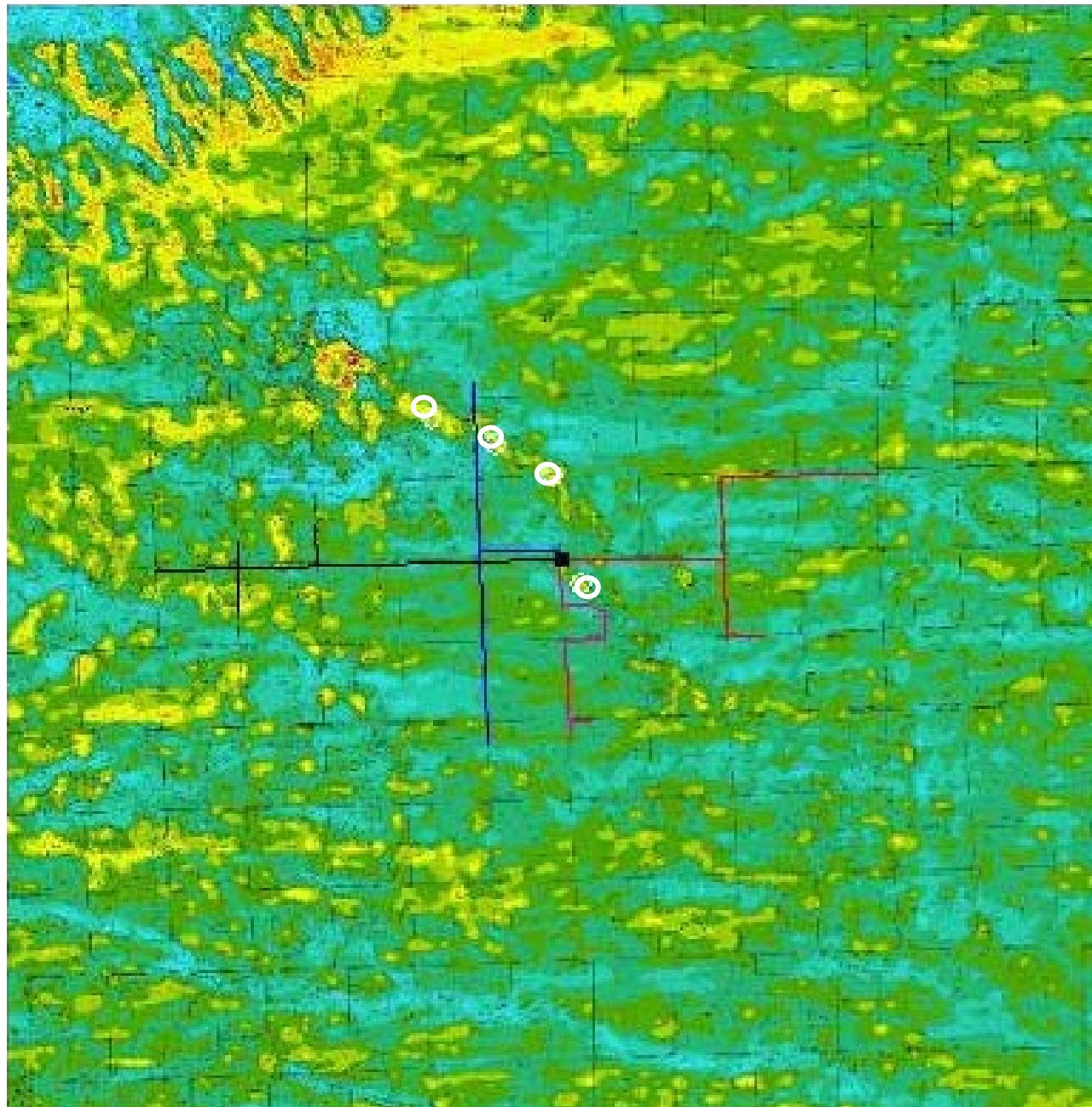
Two Turbines Added

Maximum distance is 5.1 miles from the substation.

Two more wind turbines could be added to the other feeders, however, line extensions of several miles length would be required.

**m/s at 50 m**



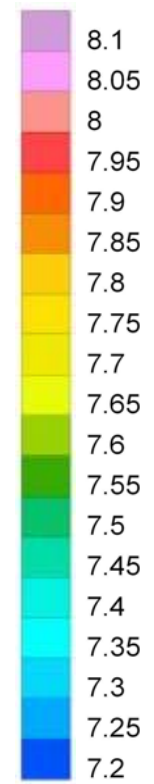


**Fairfield Substation**

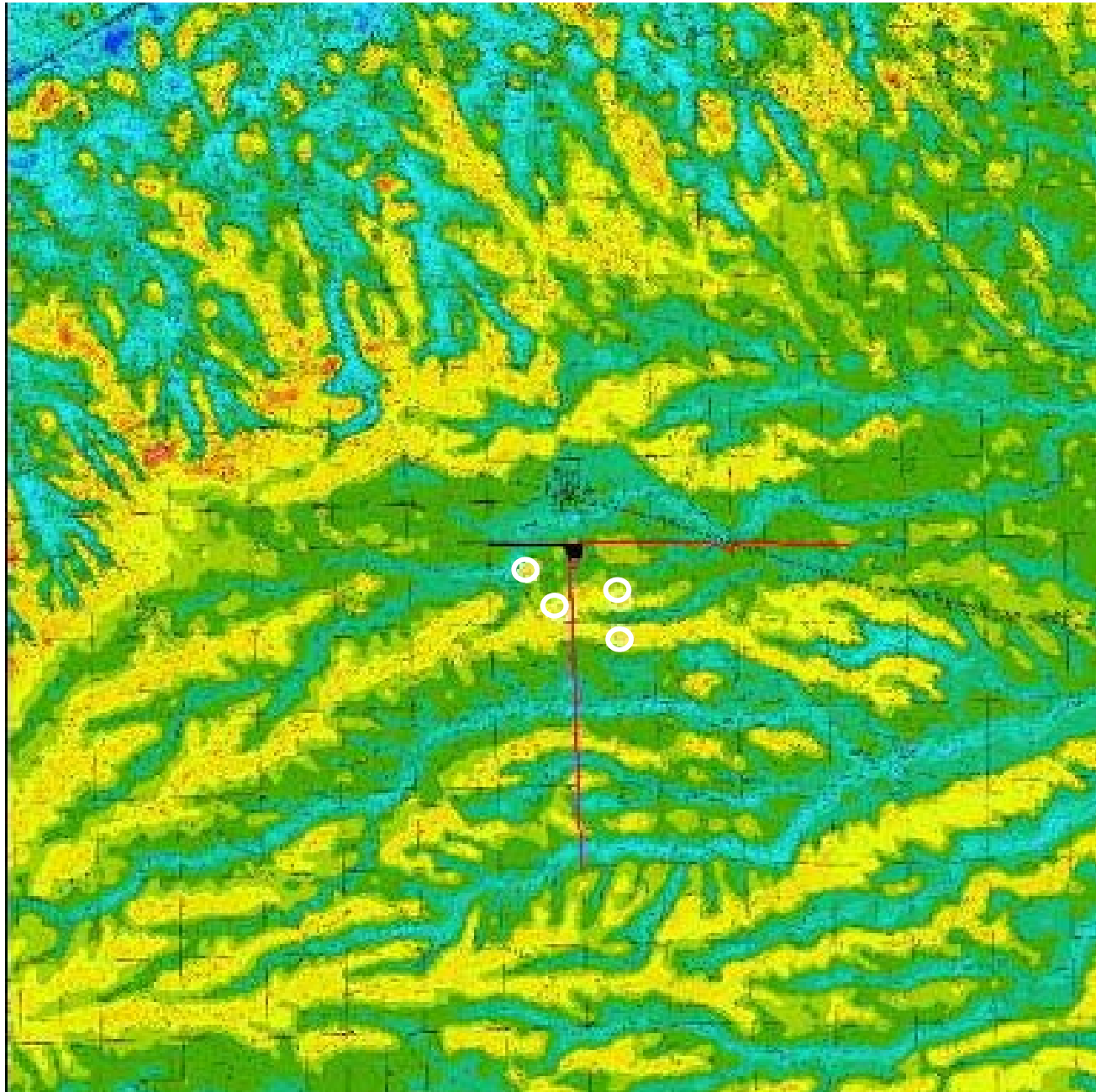
Four Turbines Added

Maximum distance is 5.0 miles from the substation

**m/s at 50 m**





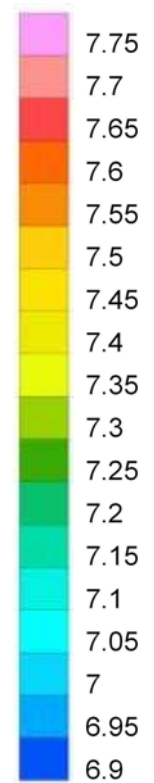


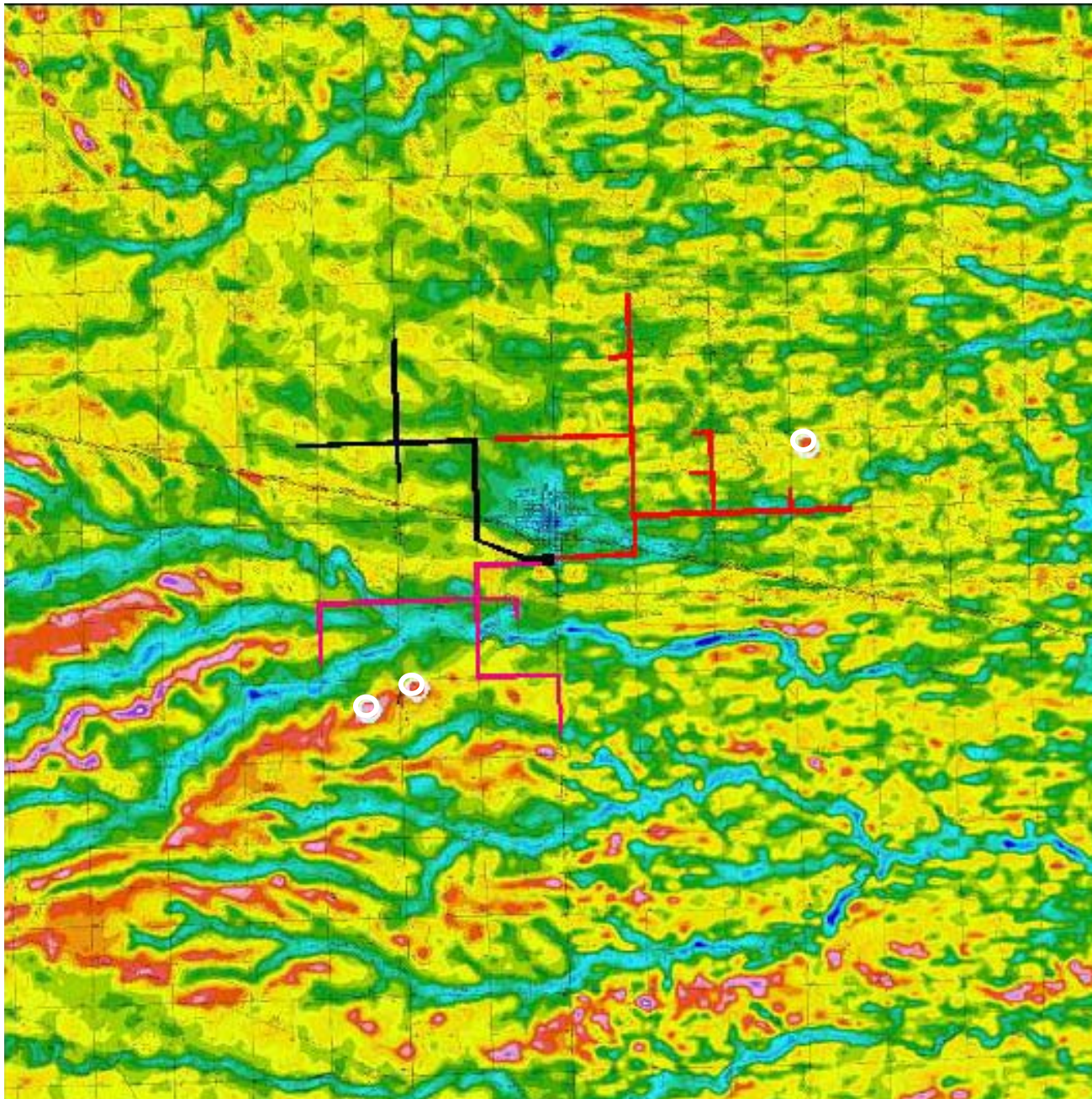
**Fleming Substation**

Four Turbines Added

Maximum distance is 4 miles from the substation

**m/s at 50 m**



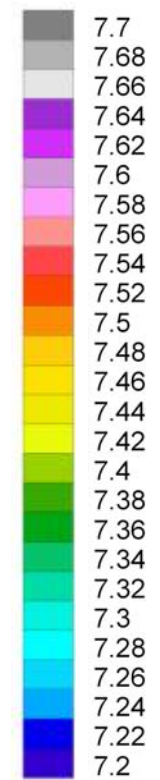


**Haxtun Substation**

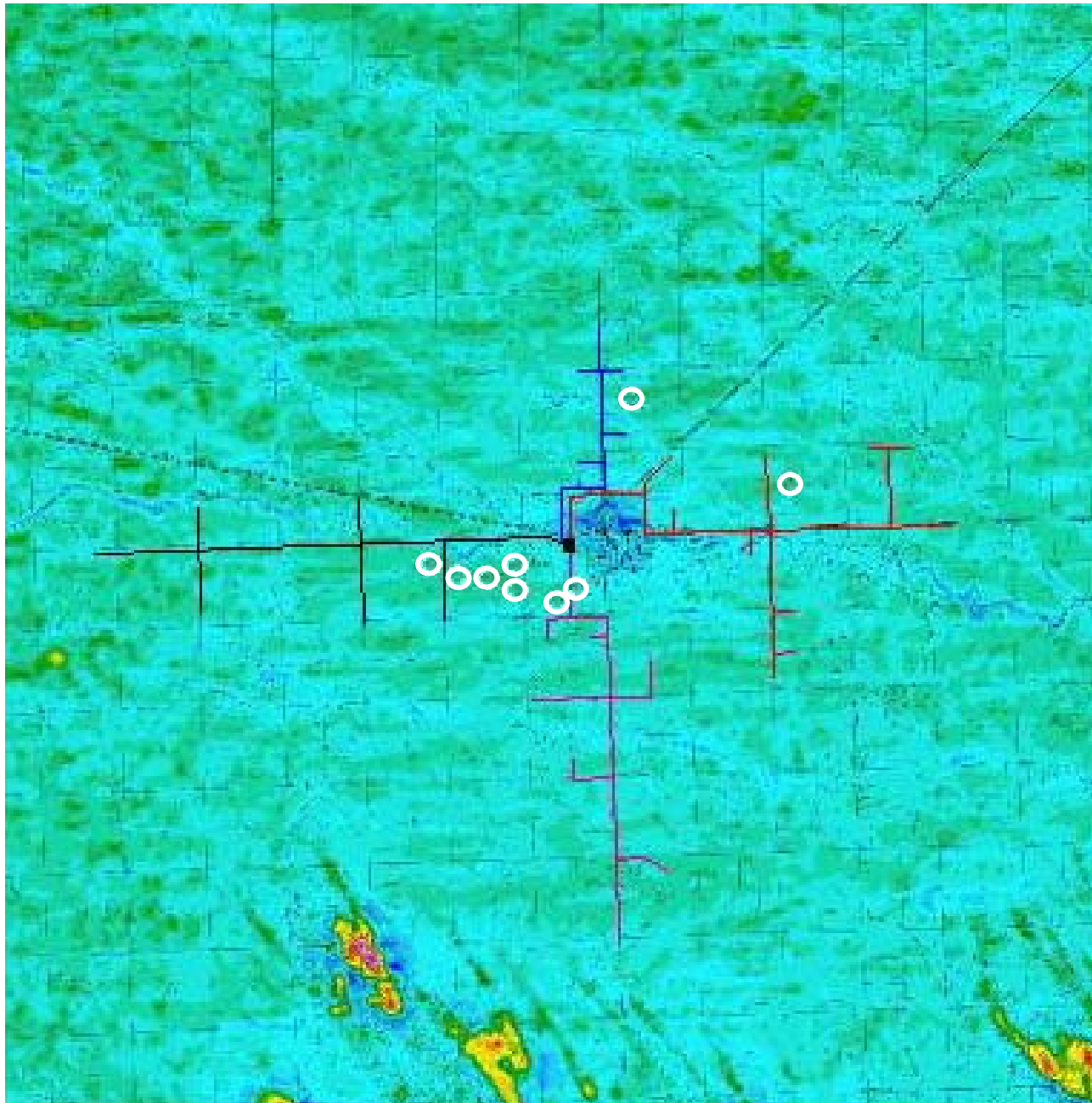
Three Turbines Added

Maximum distance is 4.8 miles from the substation

**m/s at 50 m**

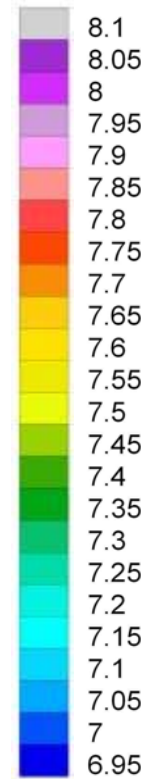




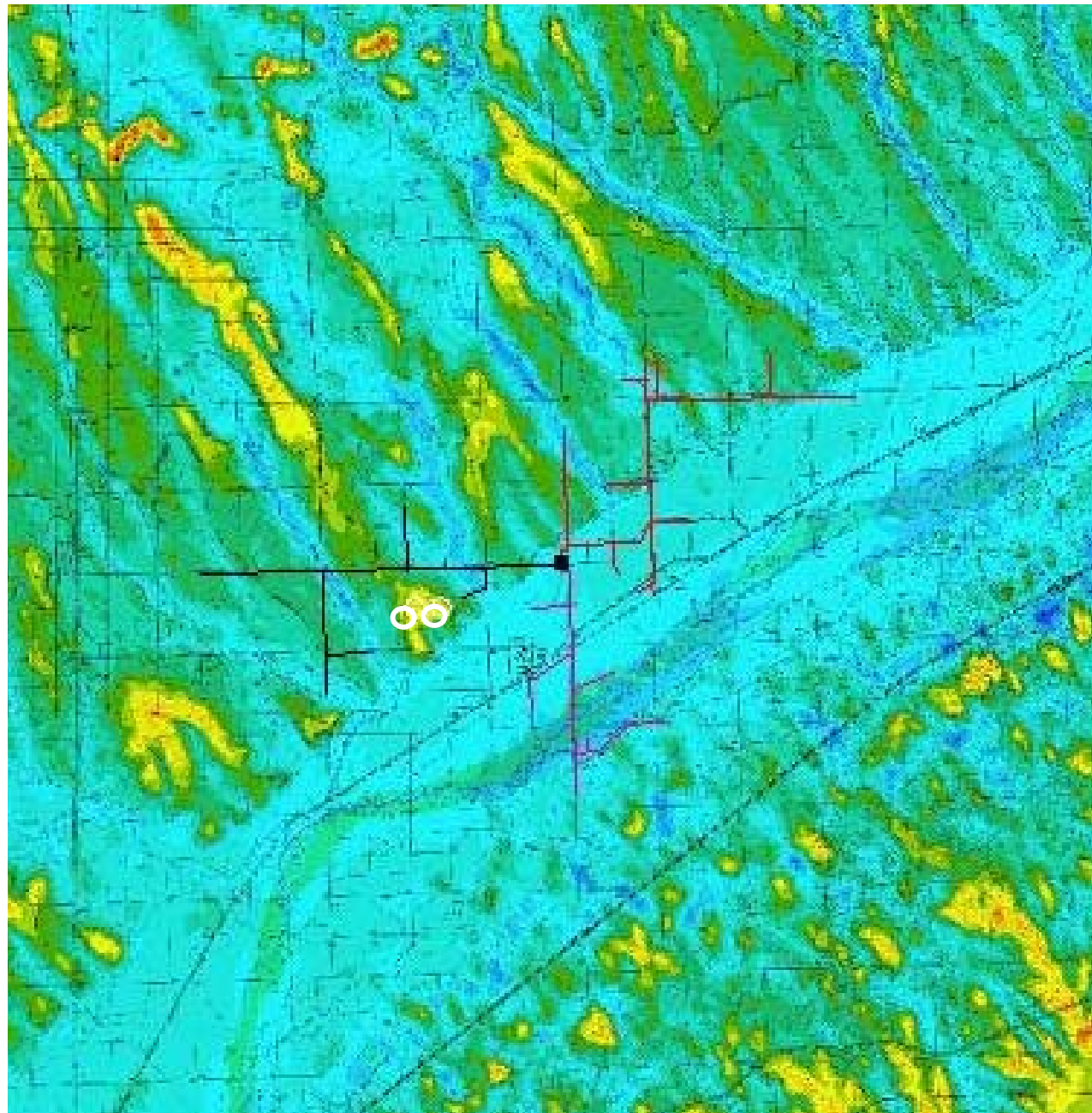


**Holyoke Substation**  
Nine Turbines Added  
Maximum distance is 6.6 miles from the substation

**m/s at 50 m**







Distributed Wind Generation Study for Northeast Colorado

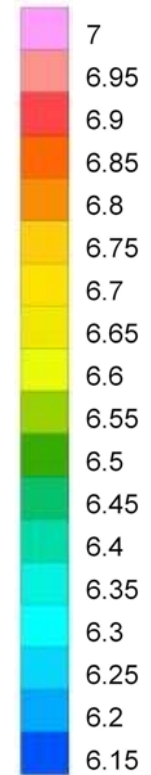
**Iliff Substation**

Two Turbines Added

Maximum distance is 5.2 miles from the substation.

One more wind turbine could be added to both the east and south feeders, but they would each require 1 mile long line extensions.

**m/s at 50 m**



Wind Utility Consulting