

The recently updated and expanded Visitor Center displays for visitors of all ages. The Visitor Center provides park passes, camping permits, firewood, bagged ice, brochures on local attractions and Colorado State Parks, and listings of ranger activities and park regulations. The Visitor Center also has a gift shop that offers items such as maps, books, guides, post cards and other local nature-oriented items through Rocky Mountain Nature Association.



VISITOR CENTER

Lathrop State Park, with 1,594 land acres, lies on a high plains grassland dotted with piñon and juniper that is typical of southeastern Colorado. Hidden among the trees and yucca are mule deer, rabbits, squirrels and a variety of birds and waterfowl. The park is a popular place to enjoy fishing, boating, swimming, camping and hiking. The Spanish Peaks, 13,610 and 12,669 feet in elevation, tower over the park to the south and attract visitors with their majestic beauty, geological interest and historical legends. The peaks were used for many years as directional guides by trappers, prospectors, settlers and explorers. The plains Indians named the peaks Huatolla (Wa-ha-toy-a), which means "Breasts of the World."

The area surrounding the Spanish Peaks, the Valley of the Rising Sun, was believed by the Indians to be a strange, mysterious place inhabited by the gods of many lost tribes. Legends tell of great lost gold mines and a "garden of paradise" at the base of the peaks. The Indians used the mined gold only for worship, but some gold was taken to Mexico for coinage. The gods, angry at this, placed a demon in the peaks to bring bad luck or death to anyone who mines gold there.

With the assistance of Huerfano County residents, Lathrop was leased in 1962 as Colorado's first state park. It is named for the first director of the Division of Parks and Outdoor Recreation, Harold W. Lathrop.



HISTORY

Boaters must observe all regulations as published in Colorado Boating Statutes and Regulations, which is available at the Visitor Center. Boaters may also purchase boat registrations at the Visitor Center.



TRAILS

Martin Lake, with 180 surface acres, offers water-skiing, fishing, power and sail boating, wind surfing and swimming. Swimming is permitted *only* in designated areas and is at the individual's own risk. The lake is divided into zones by buoys that designate swimming and specialized activity on the lake. Please review the zoning system posted at the boat ramp. With 140 surface acres and two boat ramps, Horseshoe Lake offers wind surfing and sailing, boating at wakeless speeds and fishing.



BOATING & SWIMMING

Martin and Horseshoe lakes are stocked with rainbow trout, channel catfish, tiger muskie, bass, walleye, bluegill and crappie. Fishing is year-round by visitors of all ages. Ice conditions are considered unsafe and ice fishing is not recommended. A youth fishing area is located near the Martin Lake Dam. Fishing licenses are required for everyone 16 years and older. No fishing license is required for youth 15 years and under. The swim beach, ski beach, boat docks, the dam on Martin Lake and boat ramps are closed to fishing. Only the posted areas around Horseshoe Lake are open for waterfowl and small game hunting during regular seasons. Hunting is prohibited anywhere on the park from the Friday before Memorial Day until the Tuesday after Labor Day. Only shotguns and bows and arrows are permitted during open seasons. Hunting licenses are required. Fishing and hunting licenses can be purchased at the Visitor Center during business hours.



FISHING & HUNTING

First aid may be obtained from any park ranger or at the Visitor Center. In case of an emergency, dial 911. Spanish Peaks Regional Health Center is also located across the highway from the park entrance and has a 24-hour emergency room.



FIRST AID

Offering a beautiful view and easy access to the shoreline of Martin Lake, the Los Alamos Group Picnic Area is open for use by reservation only. This area can accommodate up to 50 people. It is ideal for family reunions, company picnics or a birthday party in the park. Please contact us for more information at (719) 738-2376.



GROUP PICNIC AREA

Along the two-mile Hogback Trail, marker posts have been installed to accompany a self-guided brochure containing information about the area's plants, animal life and history. The brochures are complimentary and are available at the trailhead or at the Visitor Center. Bicycles and horses are prohibited on this designated nature trail. The Cuerno Verde Trail is an exceptionally scenic multi-use non-motorized, asphalt trail that encircles Martin Lake. This trail is just less than three miles and is a closed loop trail. This handicap-accessible trail is popular with bicyclists as well as walkers and is within walking distance from both campgrounds. All motorized use is prohibited.

REGULATIONS



Lathrop State Park was built and is maintained for the pleasure of its visitors. Please obey the following regulations to help preserve the park and ensure the safety of all visitors.

- All vehicles must display a valid parks pass at all times.
- Park is closed 10 p.m. to 5 a.m. unless actively fishing, boating or camping.
- Build fires only in metal containers or grills and fire rings provided.
- Keep vehicles on maintained roads or in parking areas.
- Camp only in designated campsites.
- Keep your pets on a leash no longer than six feet.
- Pets are prohibited on the ski and swim beaches.
- Please clean up after your pets.
- Place litter in the receptacles provided.
- Do not remove or destroy trees or other property.
- Horses and livestock are prohibited on the park.
- Firewood gathering is prohibited.
- Obey all boating and fishing regulations.
- Only 3.2% alcohol is permitted.
- Please see the Visitor Center for a complete listing of regulations.

PARK PASSES



Visitors to Lathrop State Park are required to display a current Colorado State Parks Pass on their auto windshield. Two types of passes are available. A Daily Pass is valid from the day purchased until noon the following day. An Annual Pass is valid at any state park or recreation area for the calendar year. For annual pass holders who own another vehicle, an additional pass is available at a reduced fee.

The Aspen Leaf Annual Pass is available at a discounted rate for Colorado residents over the age of 64. It allows admission to all state parks every day and discounted camping Sunday through Thursday nights. Regular camping fees are charged on weekends and holidays.

Colorado disabled veterans displaying Colorado Disabled Veteran (DV) license plates are admitted free without a pass, however, camping fees still apply.

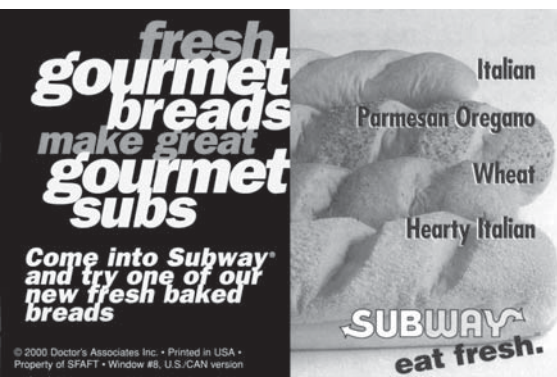
In addition to a park pass, campers are required to purchase and properly display a valid camping permit at their campsites.

HOLLOWPOINT SPORTING GOODS

Camping Supplies - USGS Maps
Guns & Ammo - Life Vests - Whistles
Fishing Tackle & Bait - Licenses
Knives - GPS Units - Reloading

342 W. 7th St. Hwy. 160
Walsenburg, CO 81089
(719) 738-3426

Located just 2 miles east
of Lathrop State Park.



228 N. MAIN ST. • WALSENBURG, CO 81089 • (719) 738-1332

PARK DIRECTIONS:
from Walsenburg go three miles west on Hwy. 160.



Colorado State Parks

Lathrop State Park
70 County Road 502
Walsenburg, CO 81089
(719) 738-2376
Fax (719) 738-2388

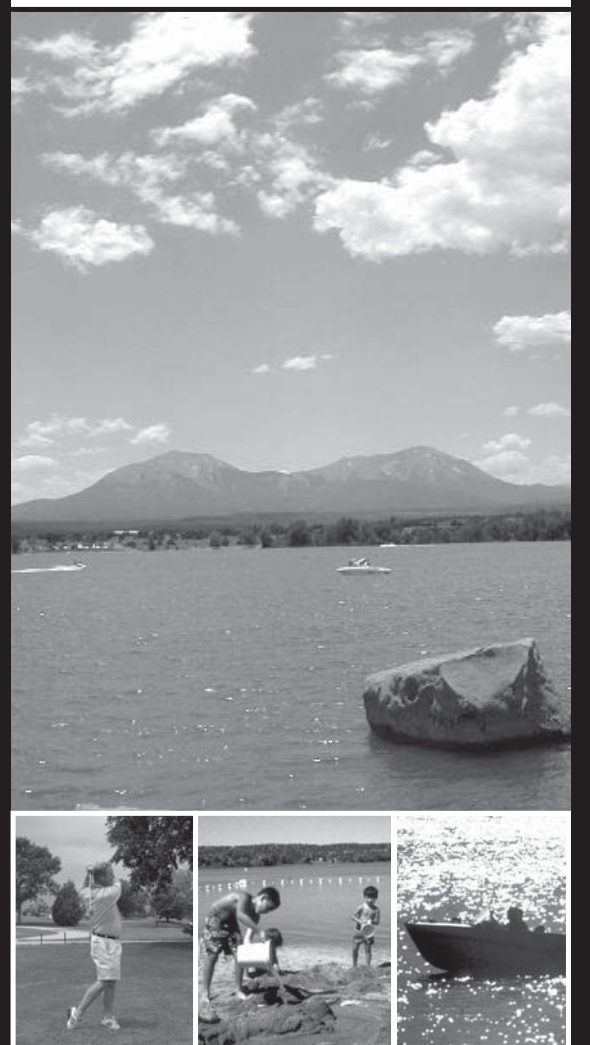
E-mail: lathrop.park@state.co.us
For new and current information on all Colorado State Parks visit us online at www.parks.state.co.us.

Any person who is excluded from participation in, denied the benefits of, or otherwise subjected to discrimination under any program of the Colorado Division of Parks and Outdoor Recreation on the grounds of race, creed, color, sex, age, handicap, or national origin, should contact the park manager, the nearest local regional office, the Division headquarters in Denver, Colorado - telephone (303) 866-3437 - or the National Park Service, P.O. Box 37127, Washington, D.C. 20013-7127.

Cualquier persona que sea excluida, negado los beneficios, o discriminado en cualquier programa del Colorado Division of Parks and Outdoor Recreation por su color, raza, credo, sexo, edad, desventaja o nacionalidad debe avisar a la oficina mas cercana de esta organizacion o por telefono a numero (303) 866-3437 o National Park Service, P.O. Box 37127, Washington, D.C., 20013-7127.

CSP-LATH-17M-5/06

Colorado State Parks LATHROP



Visit all your Colorado State Parks at
www.parks.state.co.us

CAMPING



Lathrop State Park offers its visitors 104 campsites on two campgrounds and two group camping areas. Campgrounds accommodate motor homes, trailers and tents and offer either a basic or improved camping experience. Amenities include showers and a laundry facility, dump stations, community hydrants (no hookups) and trash receptacles.

All campers are required to register at the Visitor Center before setting up at one of the campgrounds. Campers arriving after the Visitor Center has closed may purchase passes at the self-service station at the park's entrance. Self-service campers may choose sites that are not occupied or reserved.

Reservations may be made through the Colorado State Parks reservation service only. The toll-free number is 800-678-CAMP (2267) or 303-470-1144 in the Denver metro area. Reservations can also be made online at www.parks.state.co.us three days to six months in advance. Unreserved sites are available on a first-come first-serve basis. Reserving a site in advance ensures campers a specific site when they arrive.

To improve your camping experience, please observe the following:

- Trenching around the tents is prohibited in both campgrounds.
- Camping is permitted in designated campsites only. Designated campgrounds allow people to enjoy the area without destroying the environment.
- Respect quiet hours – 10 p.m. to 6 a.m.
- Pets must always be on leash and in control.
- Keep vehicles on designated roads and parking areas.
- Cutting/gathering of firewood is unlawful.
- Campfires must be attended.
- Check out time is noon.
- No more than one single family or single group, limited to six people, and one camping unit may occupy one campsite.
- In order to avoid damaging trees and shrubs, the tying of ropes or clotheslines is not allowed.
- Campsites must be occupied immediately after purchasing the campsite permit.
- Campsites may not be purchased at the park for someone else.
- Please do not keep hoses connected to water hydrants. They are for public use.

Camping Fees

Electric - \$16.00/night
Non-Electric - \$12.00/night



PIÑÓN CAMPGROUND



Piñon Campground features 83 sites with pull-through parking spaces, electrical hook-ups, flush toilets, tent pads, laundry facilities, shower houses, a playground and access to the amphitheater.

The campground is within walking distance of Martin Lake, the Hogback Trail and a nine-hole public golf course adjacent to the park, allowing easy access for fishing, hiking and golfing.

Each site is equipped with a picnic table and fire grill. Campers are strongly encouraged to use tent pads if provided at the site.

YUCCA CAMPGROUND



Yucca Campground is located within walking distance of Martin Lake and offers 21 non-electric camping sites for tents, small trailers and camping vans as well as two group camping areas. A picnic table and fire grill are provided at each site. The campground has gravel back-in spaces, vault toilets and a dump station. Water is available at hydrants throughout the campground.

GROUP CAMPING



Two group camping sites are available at the park. The Group-A campsite, perfect for a large tent-camping group, provides three large tent pads, an oversized campfire ring, a stand-up grill, three picnic tables, a water hydrant and benches.

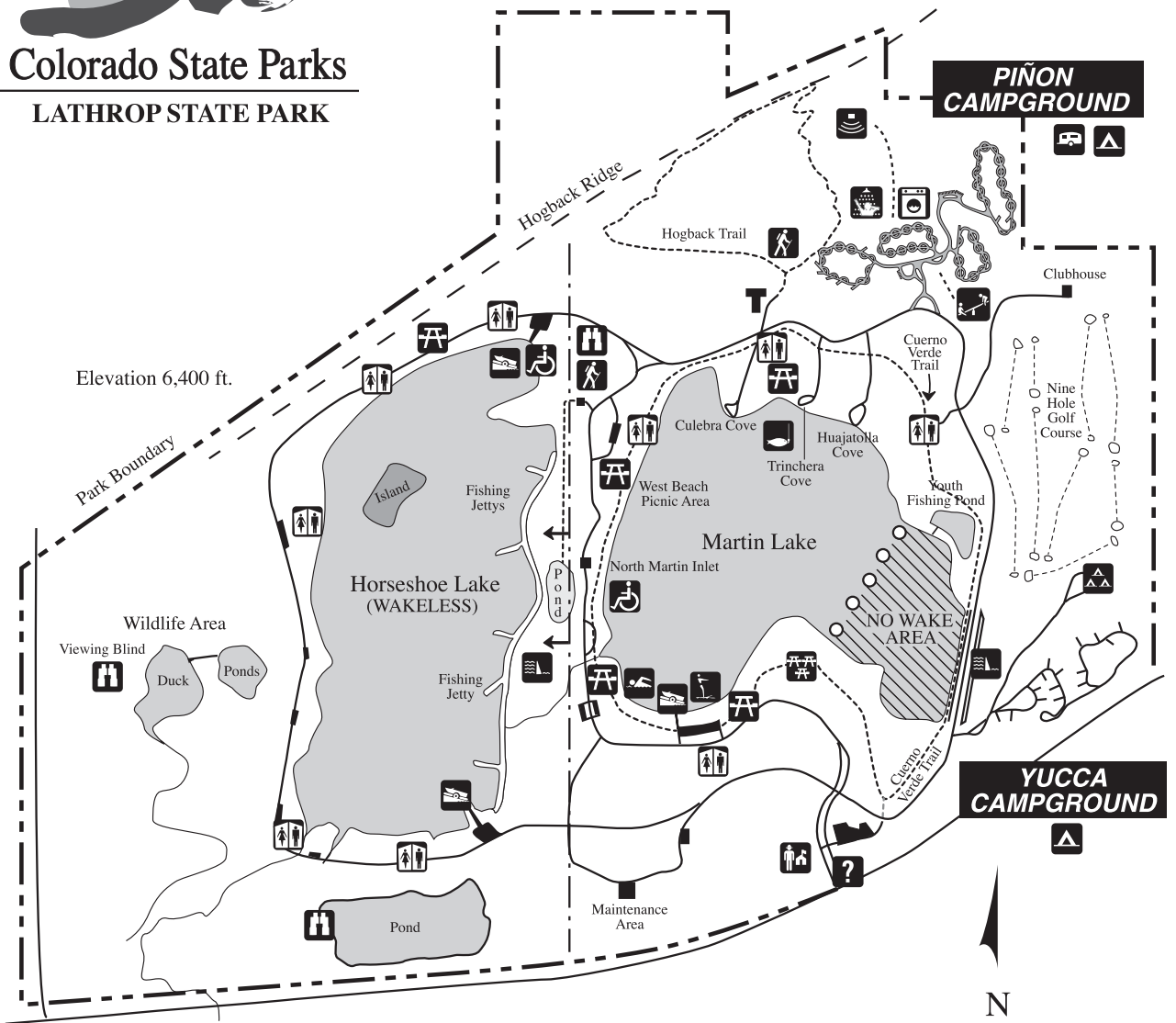
The Group-B campsite accommodates up to four motorhomes or camping units and four additional vehicles. This site provides two covered picnic shelters, two picnic tables, a campfire ring, a stand-up grill and benches.

The Group sites are non-electric and a vault toilet is accessible to both sites.

Call the Visitor Center for group camping reservations at (719) 738-2376.

Colorado State Parks

LATHROP STATE PARK



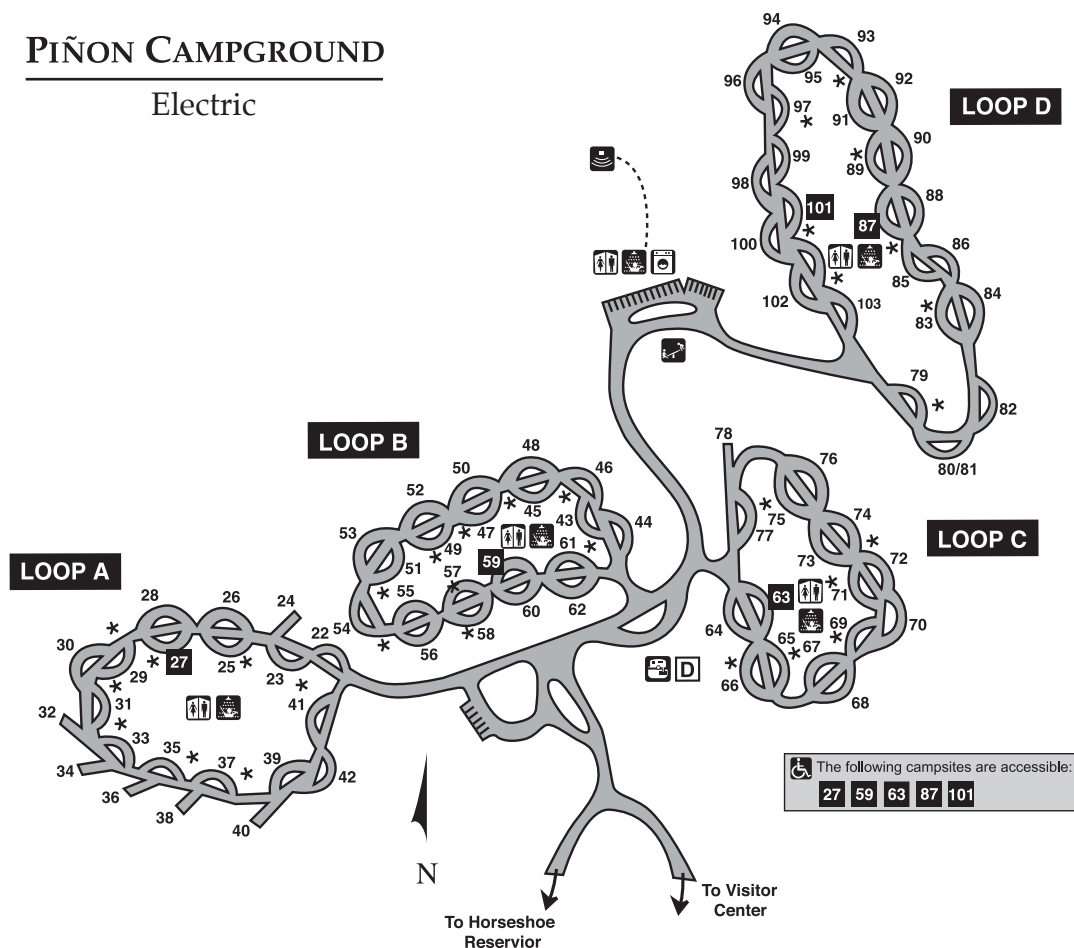
LEGEND

Accessible	Entrance Station	Picnic Area	Trail Head
Amphitheater	Fishing Access	Playground	Water Skiing Beach
Bird Watch Area	Foot Trail	Restrooms	Water
Boat Ramp	Group Camping	RV Camping	Hunting Boundary
Dam	Group Picnic Area	Showers	Park Boundary
Dump Station	Information	Swim Beach	Trail
Dumpster	Laundry	Tent Camping	

GREAT OUTDOORS COLORADO
Funded in part through Great Outdoors Colorado with Colorado Lottery proceeds.

PIÑÓN CAMPGROUND

Electric



YUCCA CAMPGROUND

Non-electric

