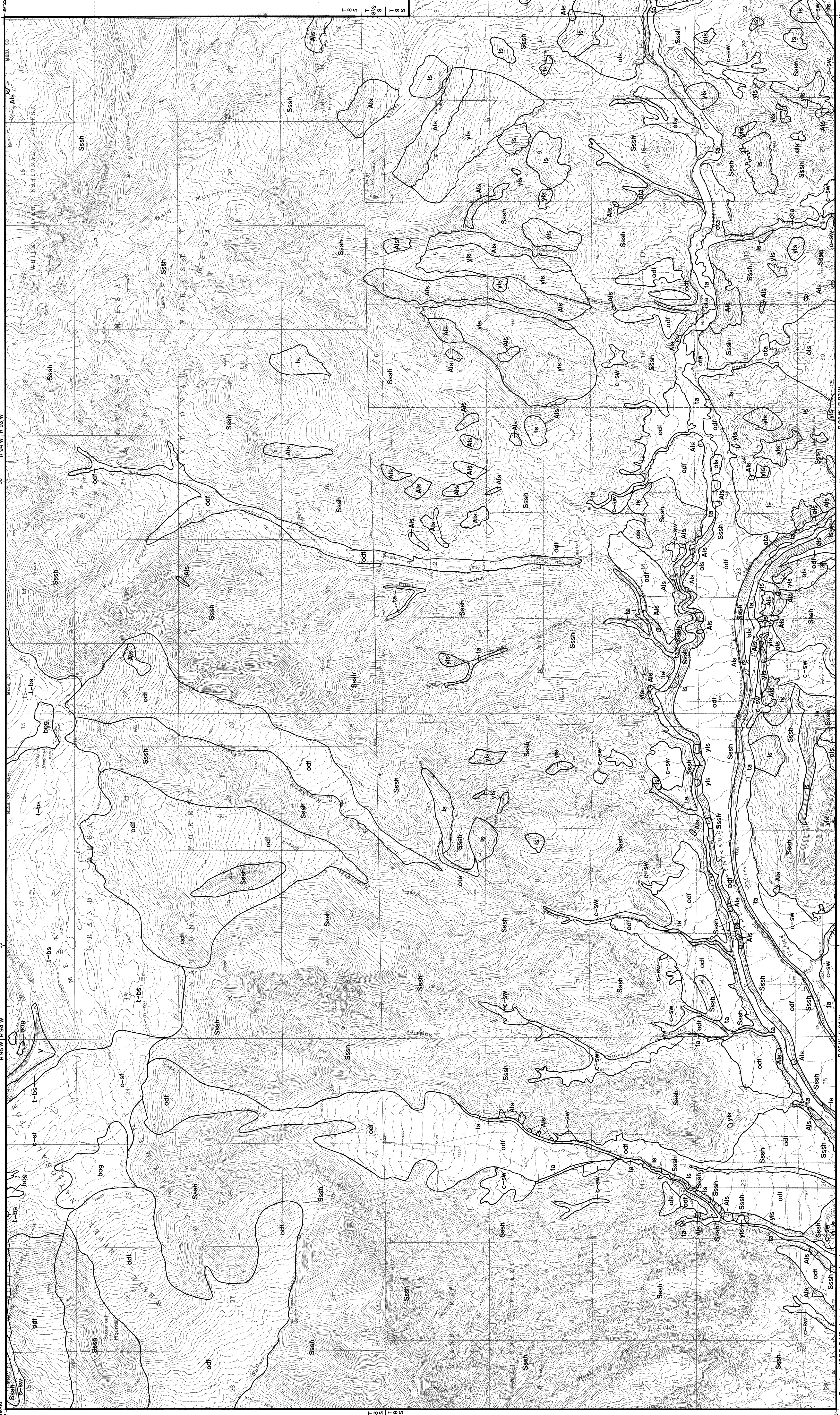


# Surficial-Geologic and Landslide Map of Vega Reservoir and Vicinity, Mesa County, Colorado

by James M. Soule



### EXPLANATION

#### DISCUSSION

This study area is located in the northwestern portion of Mesa County, Colorado, approximately 10 miles north of the town of Delta. The area is characterized by a complex geologic history and is prone to landsliding. The geologic units are primarily of Pleistocene and Holocene age, including alluvial deposits, colluvium, and lacustrine deposits. The topography is generally rolling to hilly, with the Vega Reservoir occupying a large portion of the central and eastern parts of the study area. The map shows the distribution of various geologic units and identifies areas of potential instability. The geologic units are labeled with codes such as Sssh, ois, ls, yfs, and ois. Landslide features are marked with various symbols and codes like 'l' and 'yfs'. The map includes a grid with coordinates ranging from 107° 42' W to 107° 30' W and 39° 22' N to 39° 28' N.

### EXPLANATION

#### DISCUSSION

This study area is located in the northwestern portion of Mesa County, Colorado, approximately 10 miles north of the town of Delta. The area is characterized by a complex geologic history and is prone to landsliding. The geologic units are primarily of Pleistocene and Holocene age, including alluvial deposits, colluvium, and lacustrine deposits. The topography is generally rolling to hilly, with the Vega Reservoir occupying a large portion of the central and eastern parts of the study area. The map shows the distribution of various geologic units and identifies areas of potential instability. The geologic units are labeled with codes such as Sssh, ois, ls, yfs, and ois. Landslide features are marked with various symbols and codes like 'l' and 'yfs'. The map includes a grid with coordinates ranging from 107° 42' W to 107° 30' W and 39° 22' N to 39° 28' N.

### EXPLANATION

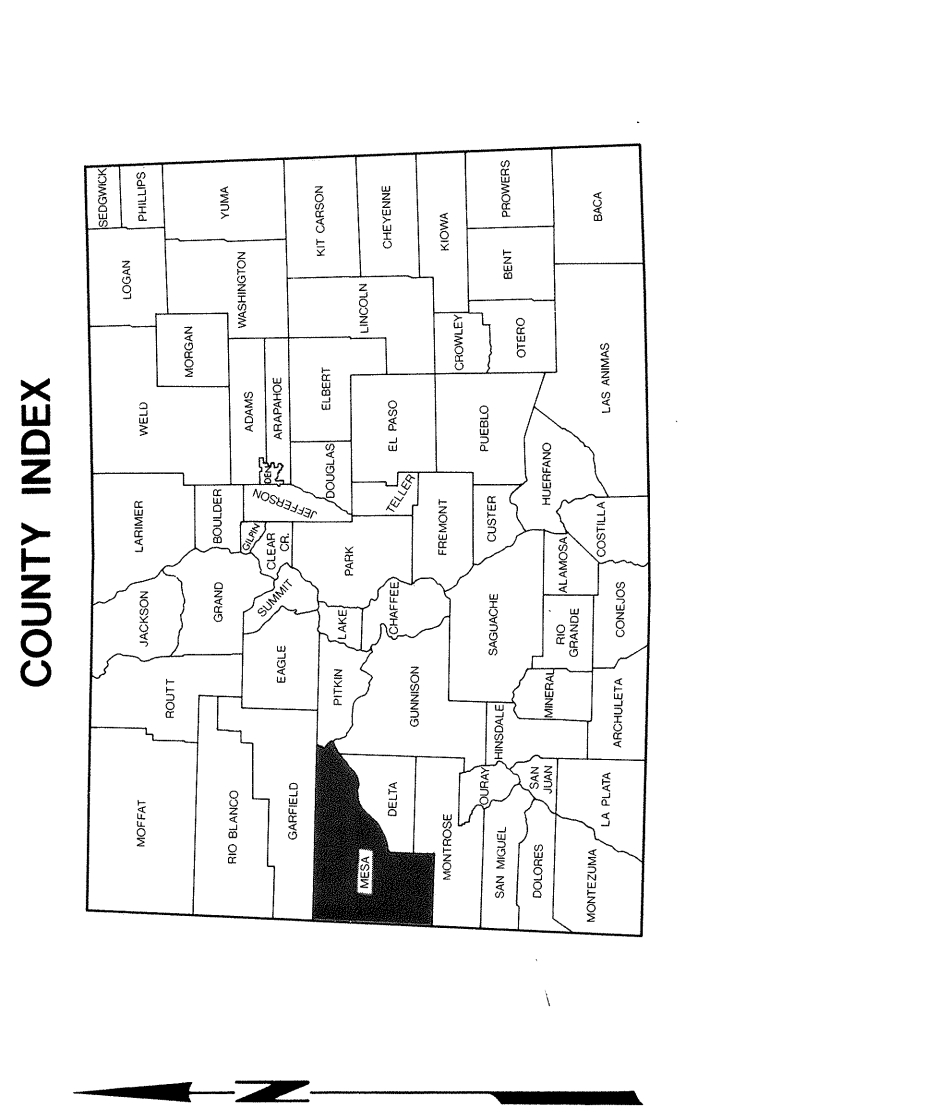
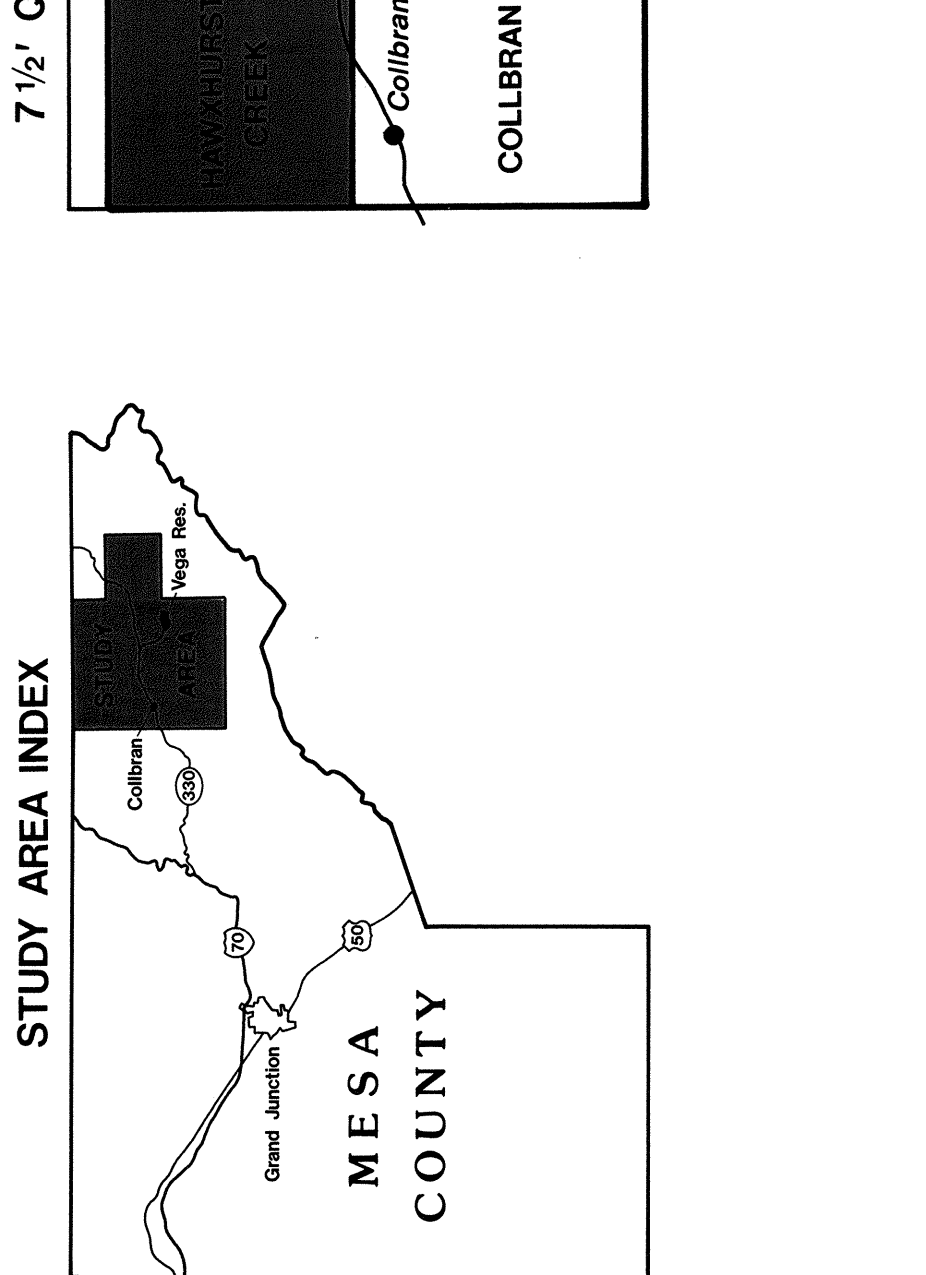
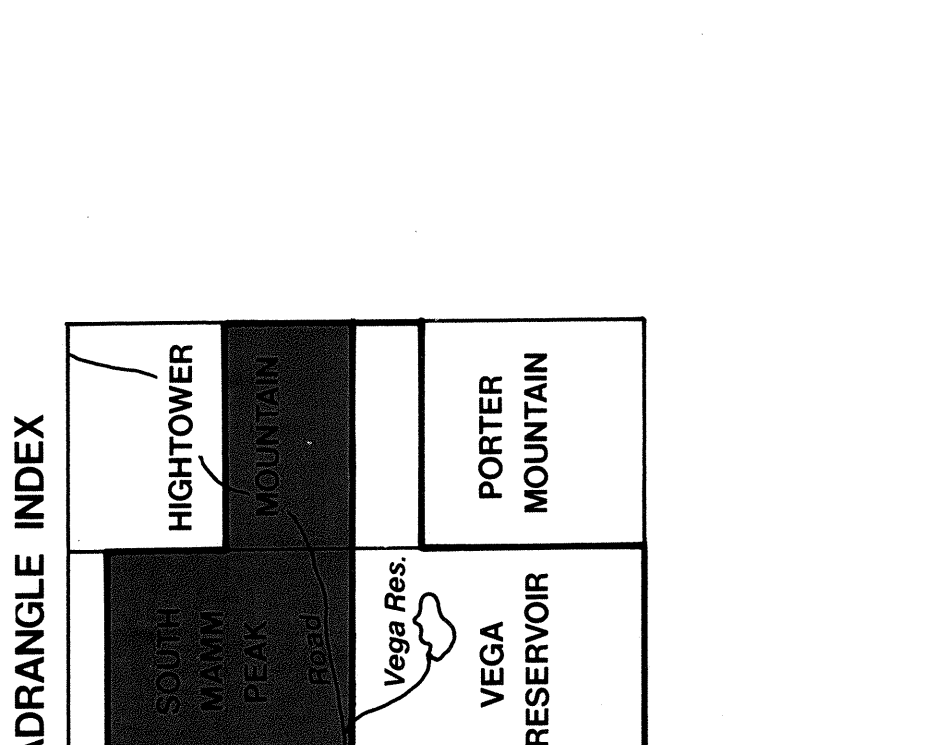
#### DISCUSSION

This study area is located in the northwestern portion of Mesa County, Colorado, approximately 10 miles north of the town of Delta. The area is characterized by a complex geologic history and is prone to landsliding. The geologic units are primarily of Pleistocene and Holocene age, including alluvial deposits, colluvium, and lacustrine deposits. The topography is generally rolling to hilly, with the Vega Reservoir occupying a large portion of the central and eastern parts of the study area. The map shows the distribution of various geologic units and identifies areas of potential instability. The geologic units are labeled with codes such as Sssh, ois, ls, yfs, and ois. Landslide features are marked with various symbols and codes like 'l' and 'yfs'. The map includes a grid with coordinates ranging from 107° 42' W to 107° 30' W and 39° 22' N to 39° 28' N.

### EXPLANATION

#### DISCUSSION

This study area is located in the northwestern portion of Mesa County, Colorado, approximately 10 miles north of the town of Delta. The area is characterized by a complex geologic history and is prone to landsliding. The geologic units are primarily of Pleistocene and Holocene age, including alluvial deposits, colluvium, and lacustrine deposits. The topography is generally rolling to hilly, with the Vega Reservoir occupying a large portion of the central and eastern parts of the study area. The map shows the distribution of various geologic units and identifies areas of potential instability. The geologic units are labeled with codes such as Sssh, ois, ls, yfs, and ois. Landslide features are marked with various symbols and codes like 'l' and 'yfs'. The map includes a grid with coordinates ranging from 107° 42' W to 107° 30' W and 39° 22' N to 39° 28' N.



### REFERENCES

Colorado Geological Survey, 1988. County Geologic Map of Mesa County, Colorado. Open-File Report 88-1.

Colorado Geological Survey, 1988. County Geologic Map of Mesa County, Colorado. Open-File Report 88-1.

Colorado Geological Survey, 1988. County Geologic Map of Mesa County, Colorado. Open-File Report 88-1.

### REFERENCES

Colorado Geological Survey, 1988. County Geologic Map of Mesa County, Colorado. Open-File Report 88-1.

Colorado Geological Survey, 1988. County Geologic Map of Mesa County, Colorado. Open-File Report 88-1.

Colorado Geological Survey, 1988. County Geologic Map of Mesa County, Colorado. Open-File Report 88-1.

### REFERENCES

Colorado Geological Survey, 1988. County Geologic Map of Mesa County, Colorado. Open-File Report 88-1.

Colorado Geological Survey, 1988. County Geologic Map of Mesa County, Colorado. Open-File Report 88-1.

Colorado Geological Survey, 1988. County Geologic Map of Mesa County, Colorado. Open-File Report 88-1.

### REFERENCES

Colorado Geological Survey, 1988. County Geologic Map of Mesa County, Colorado. Open-File Report 88-1.

Colorado Geological Survey, 1988. County Geologic Map of Mesa County, Colorado. Open-File Report 88-1.

Colorado Geological Survey, 1988. County Geologic Map of Mesa County, Colorado. Open-File Report 88-1.

### REFERENCES

Colorado Geological Survey, 1988. County Geologic Map of Mesa County, Colorado. Open-File Report 88-1.

Colorado Geological Survey, 1988. County Geologic Map of Mesa County, Colorado. Open-File Report 88-1.

Colorado Geological Survey, 1988. County Geologic Map of Mesa County, Colorado. Open-File Report 88-1.

### REFERENCES

Colorado Geological Survey, 1988. County Geologic Map of Mesa County, Colorado. Open-File Report 88-1.

Colorado Geological Survey, 1988. County Geologic Map of Mesa County, Colorado. Open-File Report 88-1.

Colorado Geological Survey, 1988. County Geologic Map of Mesa County, Colorado. Open-File Report 88-1.

### REFERENCES

Colorado Geological Survey, 1988. County Geologic Map of Mesa County, Colorado. Open-File Report 88-1.

Colorado Geological Survey, 1988. County Geologic Map of Mesa County, Colorado. Open-File Report 88-1.

Colorado Geological Survey, 1988. County Geologic Map of Mesa County, Colorado. Open-File Report 88-1.

### REFERENCES

Colorado Geological Survey, 1988. County Geologic Map of Mesa County, Colorado. Open-File Report 88-1.

Colorado Geological Survey, 1988. County Geologic Map of Mesa County, Colorado. Open-File Report 88-1.

Colorado Geological Survey, 1988. County Geologic Map of Mesa County, Colorado. Open-File Report 88-1.

### REFERENCES

Colorado Geological Survey, 1988. County Geologic Map of Mesa County, Colorado. Open-File Report 88-1.

Colorado Geological Survey, 1988. County Geologic Map of Mesa County, Colorado. Open-File Report 88-1.

Colorado Geological Survey, 1988. County Geologic Map of Mesa County, Colorado. Open-File Report 88-1.

### REFERENCES

Colorado Geological Survey, 1988. County Geologic Map of Mesa County, Colorado. Open-File Report 88-1.

Colorado Geological Survey, 1988. County Geologic Map of Mesa County, Colorado. Open-File Report 88-1.

Colorado Geological Survey, 1988. County Geologic Map of Mesa County, Colorado. Open-File Report 88-1.

### REFERENCES

Colorado Geological Survey, 1988. County Geologic Map of Mesa County, Colorado. Open-File Report 88-1.

Colorado Geological Survey, 1988. County Geologic Map of Mesa County, Colorado. Open-File Report 88-1.

Colorado Geological Survey, 1988. County Geologic Map of Mesa County, Colorado. Open-File Report 88-1.

### REFERENCES

Colorado Geological Survey, 1988. County Geologic Map of Mesa County, Colorado. Open-File Report 88-1.

Colorado Geological Survey, 1988. County Geologic Map of Mesa County, Colorado. Open-File Report 88-1.

Colorado Geological Survey, 1988. County Geologic Map of Mesa County, Colorado. Open-File Report 88-1.

### REFERENCES

Colorado Geological Survey, 1988. County Geologic Map of Mesa County, Colorado. Open-File Report 88-1.

Colorado Geological Survey, 1988. County Geologic Map of Mesa County, Colorado. Open-File Report 88-1.

Colorado Geological Survey, 1988. County Geologic Map of Mesa County, Colorado. Open-File Report 88-1.

### REFERENCES

Colorado Geological Survey, 1988. County Geologic Map of Mesa County, Colorado. Open-File Report 88-1.

Colorado Geological Survey, 1988. County Geologic Map of Mesa County, Colorado. Open-File Report 88-1.

Colorado Geological Survey, 1988. County Geologic Map of Mesa County, Colorado. Open-File Report 88-1.

