

Colorado School Counselor Corps Program Impact Summary



Impact on Dropout and Graduation Rates

The Colorado School Counselor Corps Program schools have shown a decrease in their dropout rates as indicated by newly released data for Fiscal Year (FY) 2009-10.

Comparison of Dropout Rates

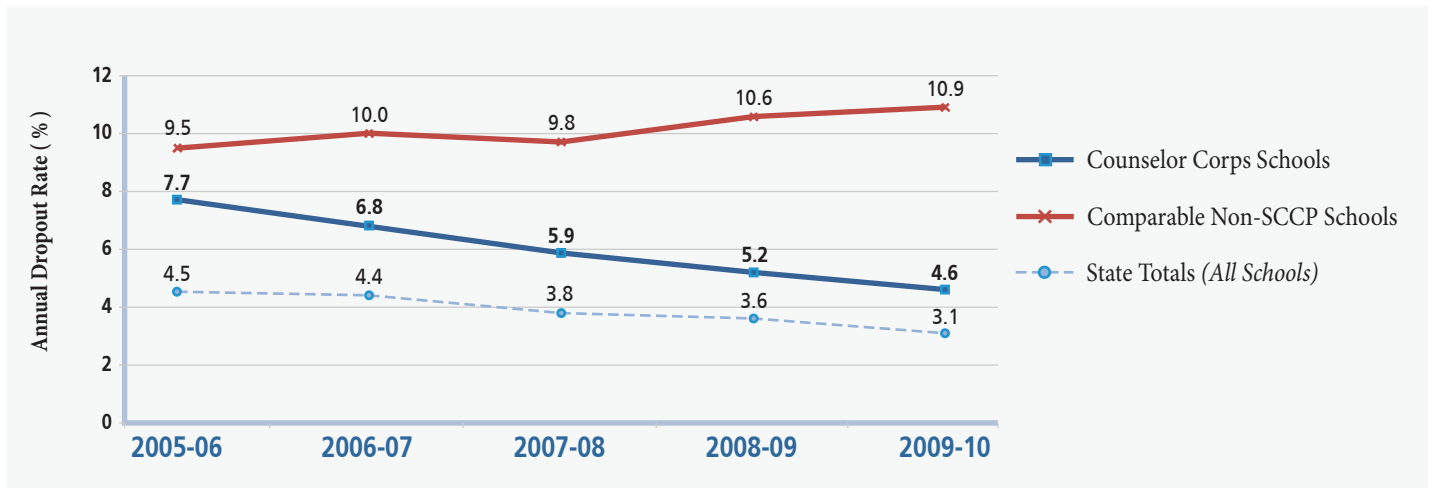
Below documents the improvements and gains made in the School Counselor Corps program over the first two years of the grant. The data show that in comparison with non-funded School Counselor Corps schools, the schools receiving School Counselor Corps grant funds decreased (improved) their cumulative dropout rate by .6 percentage points from 2008-09 to 2009-10 while non-participating schools increased their dropout rate by .3 percentage points over this same period. Additionally, the SCCP has maintained the graduation rate from 2007-08 to 2009-10 while non-participating schools show declining graduation rates over the same period.

	2005-06	2006-07	2007-08	2008-09	2009-10
Counselor Corps Schools	7.7%	6.8%	5.9%	5.2%	4.6%
Comparable Non-SCCP Schools	9.5%	10%	9.8%	10.6%	10.9%
State Totals	4.5%	4.4%	3.8%	3.6%	3.1%
Counselor Corps Schools	79,209	80,107	80,304	82,452	81,668
Comparable Non-SCCP Schools	87,216	91,361	74,219	67,863	59,024
Counselor Corps Schools	6,126	5,429	4,774	4,282	3,756
Comparable Non-SCCP Schools	8,289	9,159	7,293	7,332	6,421



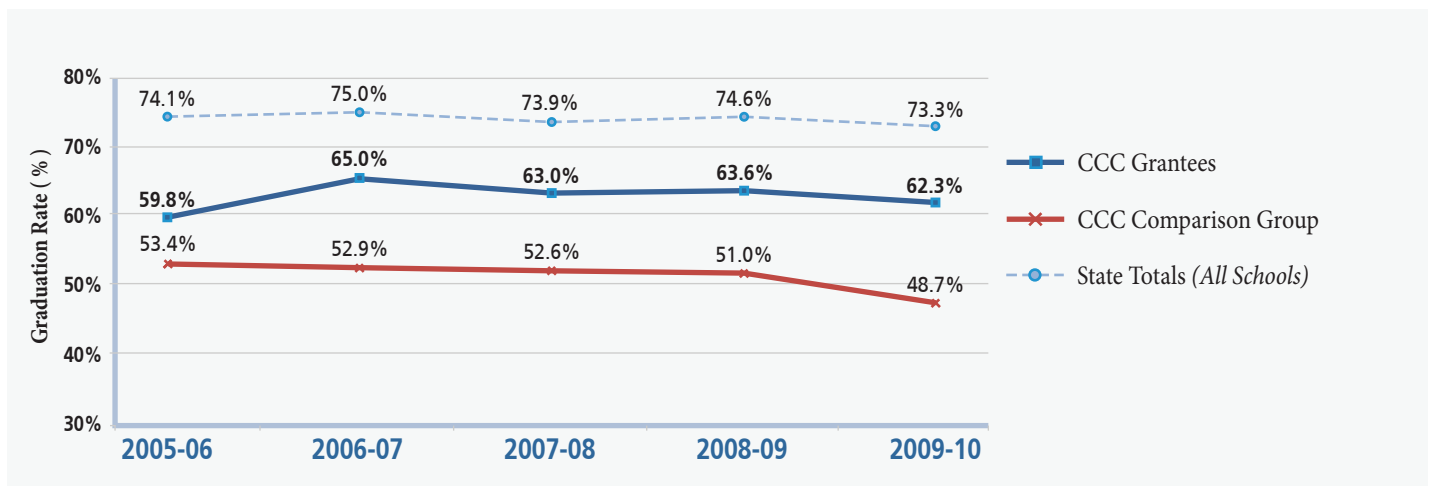
Dropout Rate Over Time ~ Colorado Counselor Corps Schools vs. Comparable Non-SCCP Schools

The following chart illustrates the comparisons and shows the improvement made in SCCP schools.



Comparison of Graduation Rate

The table below shows the graduation rates for SCCP schools have remained consistent since 2007-08 but for comparable Non-SCCP schools, the graduation rates significantly decline in 2009-10.



* For consistency and comparability, graduation rates for 2009-10 are calculated using the previous "adjusted cohort" calculation rather than the "on-time" rate.